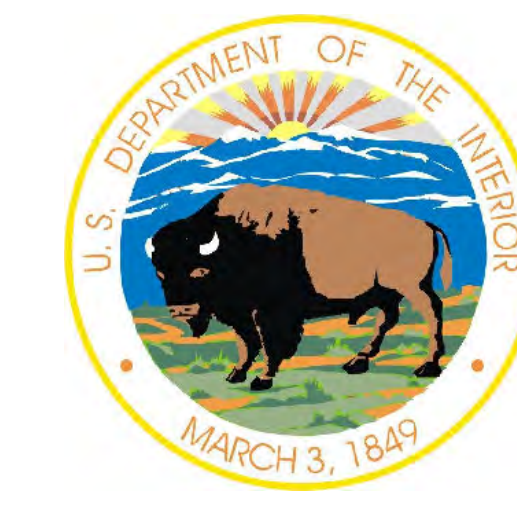


# Wind River Indian Reservation, Wyoming

## Reservation Boundary and 1953 Act Area



### Legend



#### Roads

- Primary Hard Surface
- Secondary Hard Surface
- Light Duty
- Unimproved
- Railroad

#### Water Resources

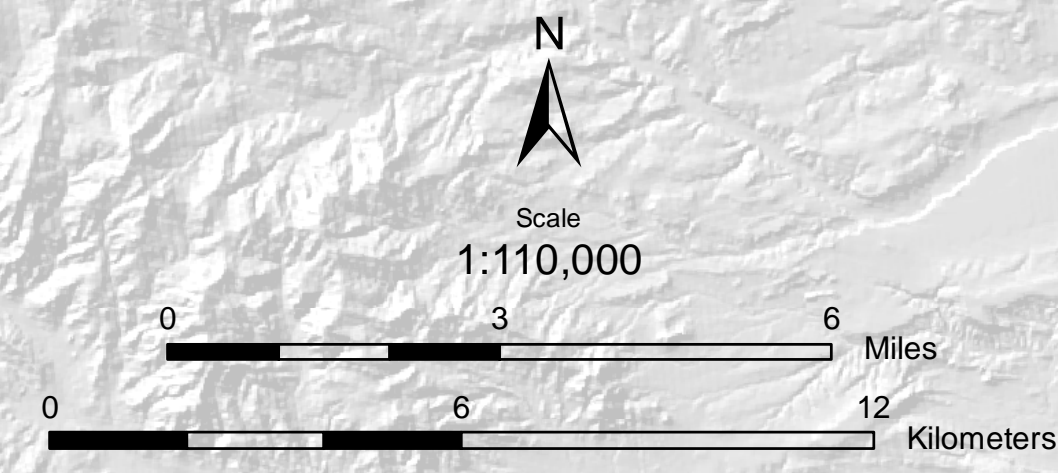
- Intermittent Stream
- River
- Lake and Reservoir

#### Geographic Areas

- Wind River Boundary (2005)
- 1953 Act Area
- County Boundary

#### Populated Areas

- Town



Hot Springs County  
Fremont County

Hot Springs County  
Fremont County

Hot Springs County  
Fremont County

Boysen

Boysen  
Reservoir

Crowheart

Pavillion

Morton

Pilot Butte  
Reservoir

Ocean  
Lake

Johnstown

Riverton

Ft Washakie

Ethete

Arapahoe

Hudson

Fremont County

Map Disclaimer:  
This map is for illustrative purposes  
only and not intended to determine  
with specificity whether a particular  
tract is within the 1953 Act Area.