



Strategies for Sustainable Ports

Presented to the U.S. – Taiwan Sustainability Symposium
December 10, 2012



Committed to Managing Resources and Conducting Port Developments and Operations in an Environmentally Responsible Way



Roles of Port Authorities

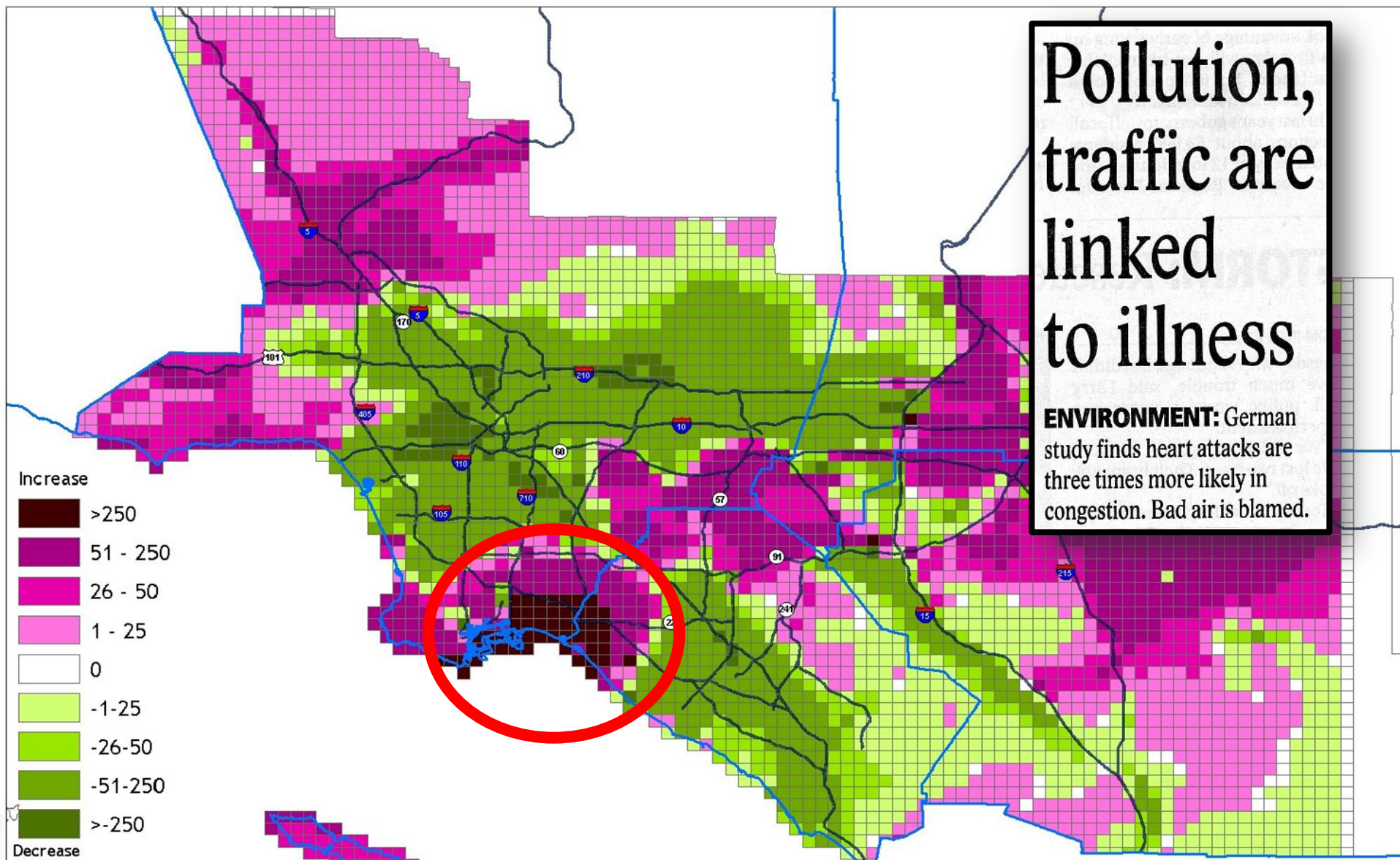
- Key player in the logistic chain
- Manager of Infrastructure
- Developer of land use
- Nodal point of knowledge on ports and the environment
- Administrator of environmental programs
- Facilitator for innovation
- A partner in the community



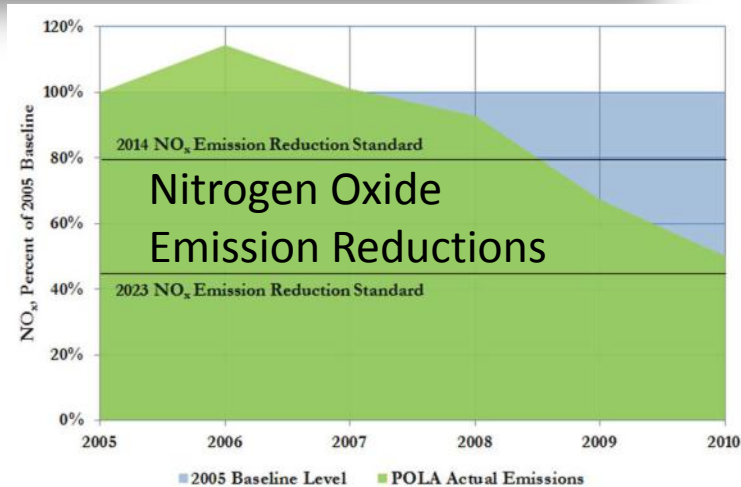
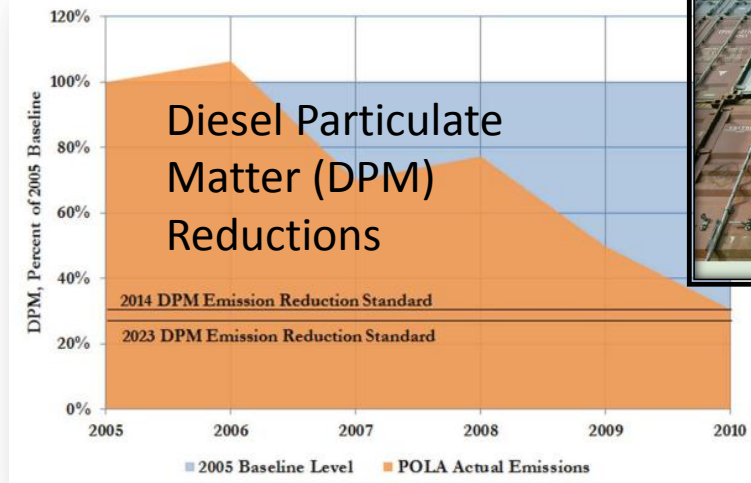
Environmental Sustainability



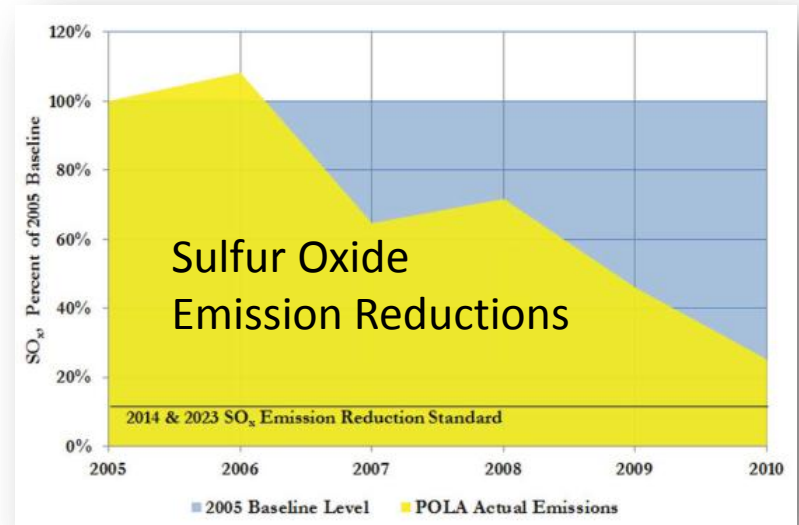
A “Diesel Death Zone”



Clean Air Action Plan



EMISSIONS PER 10,000 TEU HANDLED <i>(emission reductions)</i>		
Pollutant	CY 2005 - 2010	
	%	tons
DPM	71%	0.84
PM _{2.5}	71%	0.79
PM ₁₀	71%	0.92
NO _x	52%	11.42
SO _x	76%	5.39



Water Resources Action Plan

Port Land-side

- Tenant Operations
(Container Terminals,
Boat Yards, etc.)

Port Water-side

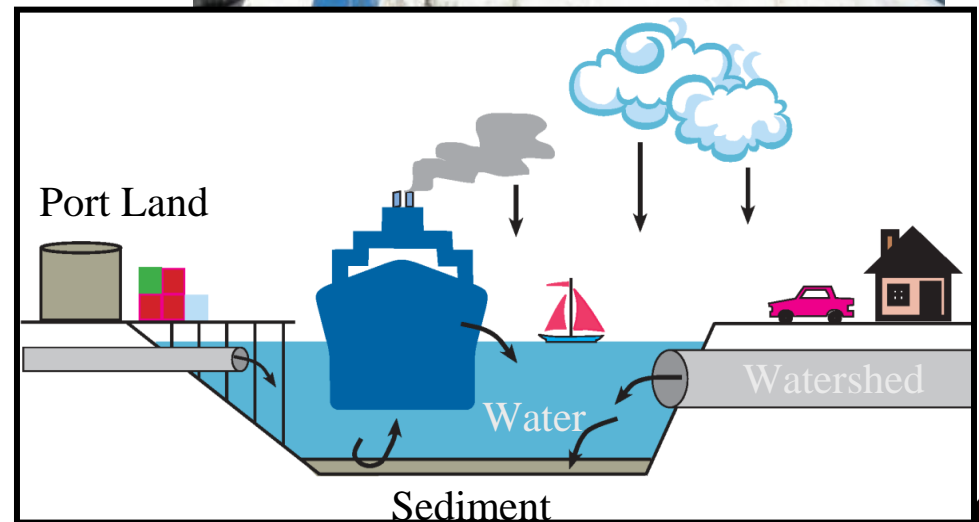
- Vessel discharges
- Vessel maintenance

Sediment

- Contaminated hot spots
- Resuspension

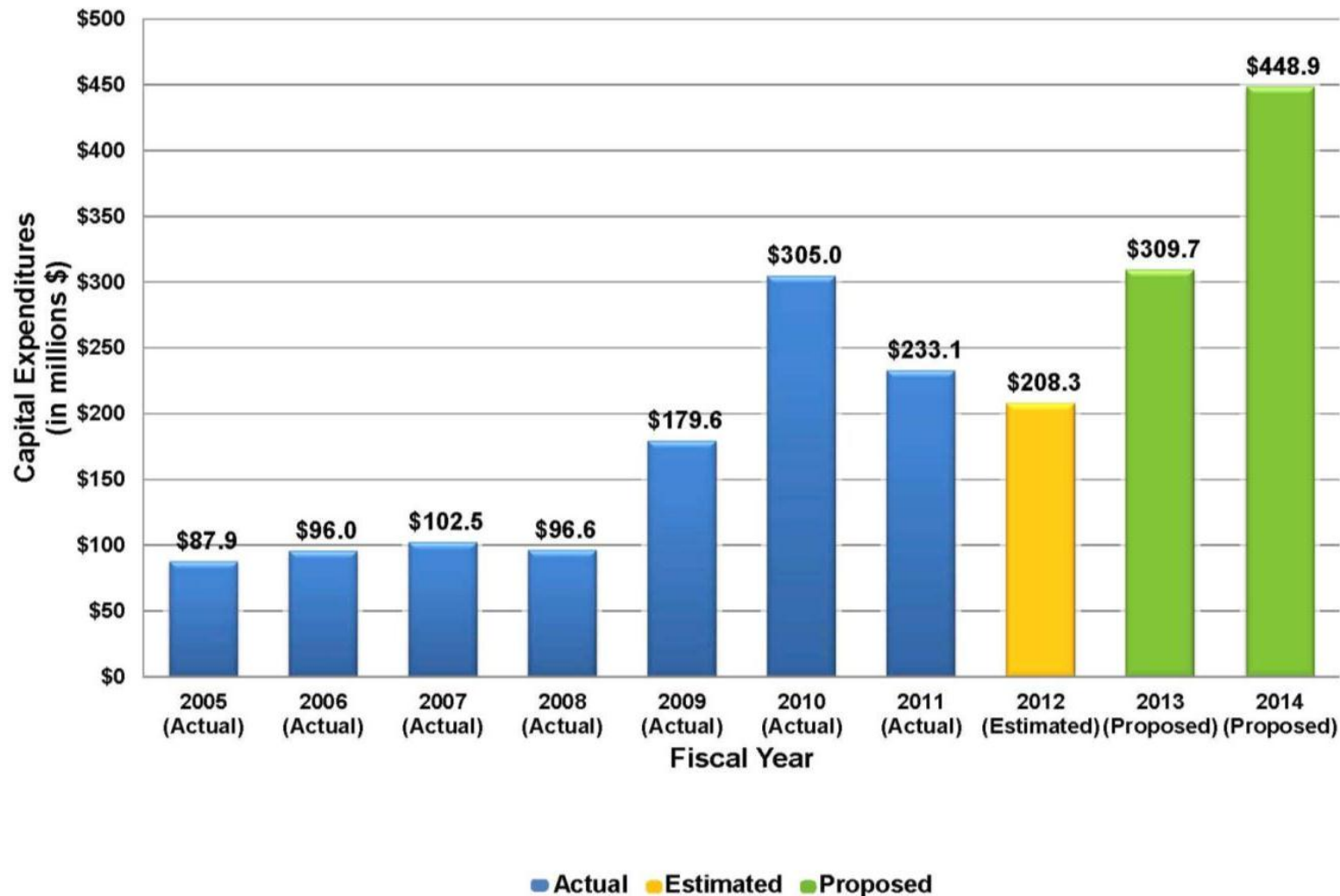
Upstream Watershed

- Stormwater flows into harbor
- Aerial deposition

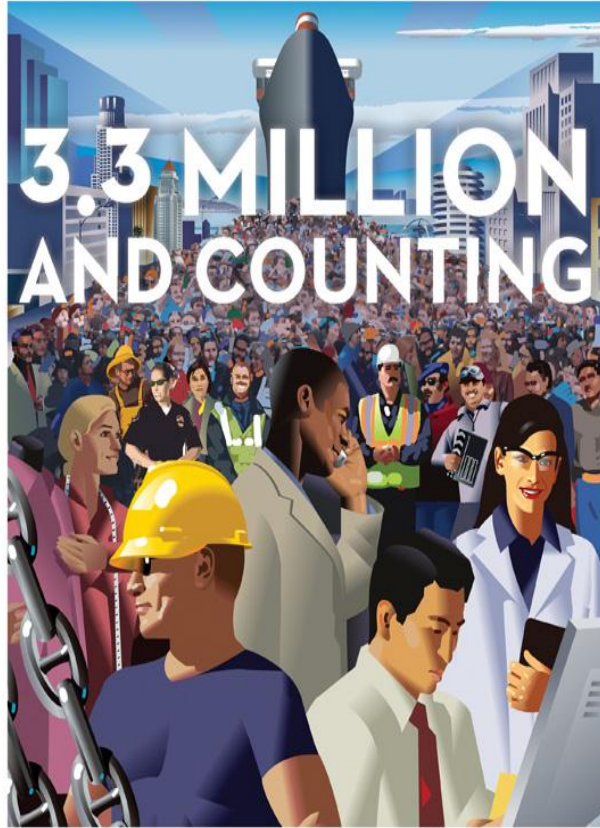


Economic Sustainability

Port of Los Angeles Capital Improvement Spending



Capitalizing on Job Creation



Being the busiest container port in the U.S. and handling almost a quarter of all cargo entering the country, the Port of Los Angeles has a tremendous impact on the job market. Not only in Southern California, but statewide and nationwide, we directly and indirectly generate 3.3 million jobs. That's how important global trade and goods movement are to our economy. So, whether we export the goods you make, or import the goods you need, the Port brings prosperity to your community and the economy.



www.portoflosangeles.org

We're Investing in Your Future

We're investing \$1 million a day in capital development projects to give you an edge in the future. And, we're creating thousands of construction jobs for the region at the same time.



www.portoflosangeles.org

Sustaining our Communities

San Pedro and Wilmington Waterfront Development



WILMINGTON INDUSTRIAL BUFFER (2007)



WILMINGTON PARK TODAY

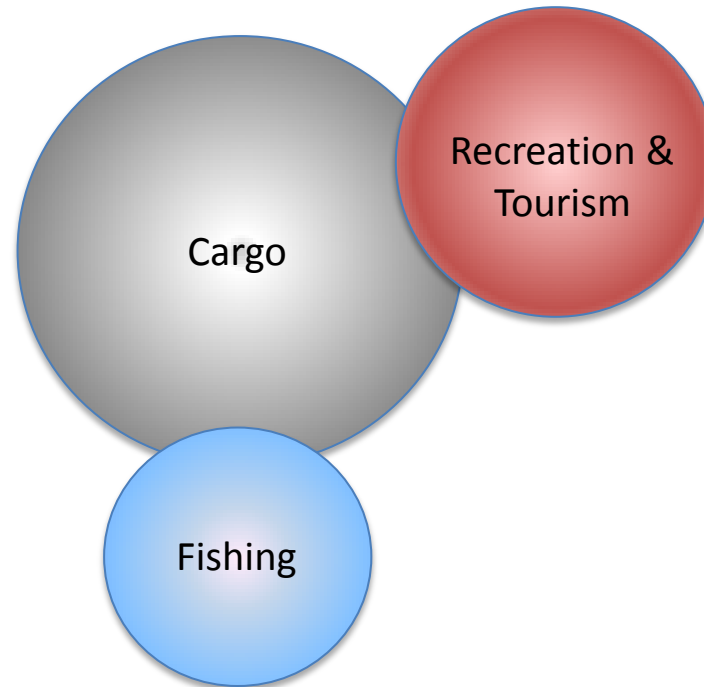


City Dock No. 1



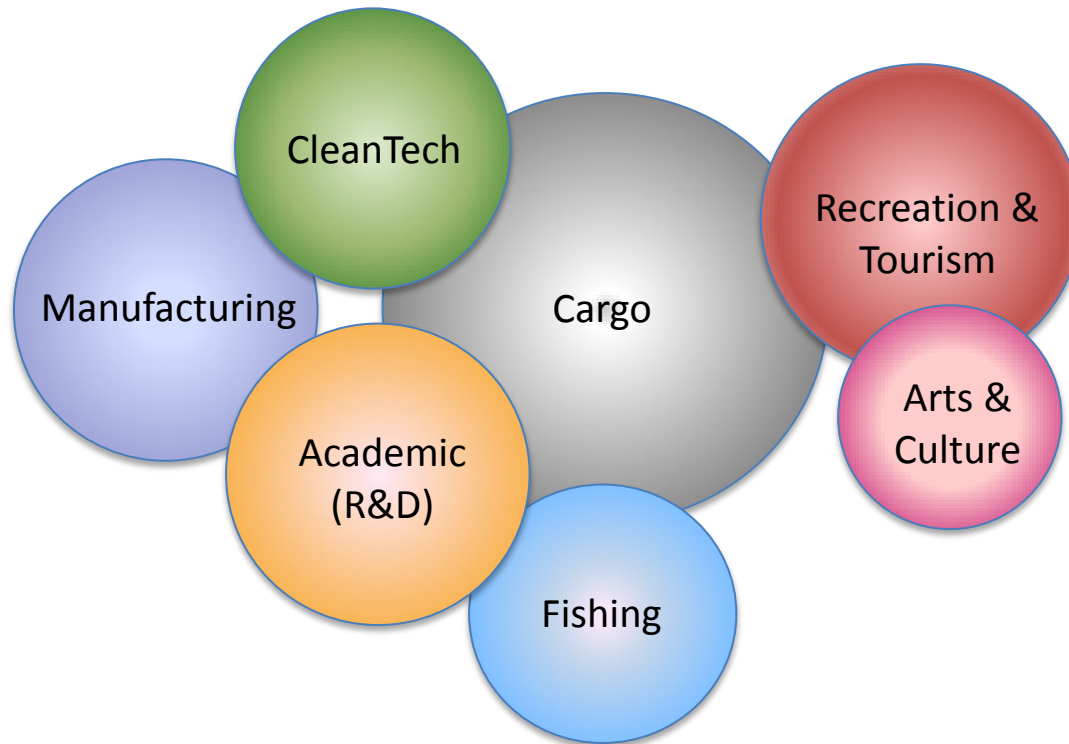
Job Cluster Regeneration

The Past



Job Cluster Regeneration

The Future



International Collaboration

Working Together to Reach Our Goals

- World Ports Climate Initiative (WPCI)
- Pacific Ports Clean Air Collaborative (PPCAC)
- World Association for Waterborne Transport Infrastructure (PIANC)
- West Coast Ports Collaborative – Sustainable Construction Guidelines
- Conferences and Symposiums
- Staff Exchanges



Green Design and Construction

Joint West Coast Port Technical Committee

Development of Sustainable Design and Construction Guidelines

- ❖ Port of Los Angeles
- ❖ Port of Long Beach
- ❖ Port of Seattle
- ❖ Port of Tacoma
- ❖ Port of Portland
- ❖ Port of San Diego
- ❖ Port of Vancouver



Icon	Sustainability Goal Area
	Sustainable Sites and Marine Environments
	Community Relations, Public Outreach and Human Health
	Economic Growth and Long-Term Cost Savings
	Recycling, Pollution Prevention and Waste Minimization
	Water Management and Efficiency
	Stormwater Management
	Reduced Greenhouse Gas (GHG) Emissions and Air Toxins
	Energy Management and Efficiency
	On-Site Renewable Energy and Alternative Energy
	Material Resource Efficiency, Re-use, Recycled Content, and Reduced Materials
	Regional Materials
	Low-Emitting, Fuel Efficient and Alternative Fuel Vehicles
	Reduced Heat Island Effect
	Operations and Advanced Maintenance
	Innovation
	Port Priorities



**THE PORT
OF LOS ANGELES**

Thank You!

