

LEGEND

- STAFF GAUGE LOCATION AND IDENTIFICATION
- MW-4 GROUNDWATER MONITORING WELL LOCATION AND IDENTIFICATION, GROUNDWATER ELEVATIONS ARE SHOWN IN FEET RELATIVE TO MSL
- TP-12 PIEZOMETER LOCATION AND IDENTIFICATION, GROUNDWATER ELEVATIONS ARE SHOWN IN FEET RELATIVE TO MSL
- CM-1 CREEK MEDIA SAMPLING POINT LOCATION AND IDENTIFICATION
- 180 POTENTIOMETRIC SURFACE CONTOUR, CONTOUR INTERVAL = 5 FEET
- APPROXIMATE PROPERTY BOUNDARY
- INTERMITTENT DRAINAGE DITCH
- APPROXIMATE BOUNDARY OF FORMER LANDFILL AREA

NOTES

1. BASE MAP PROVIDED BY HERCULES, INCORPORATED

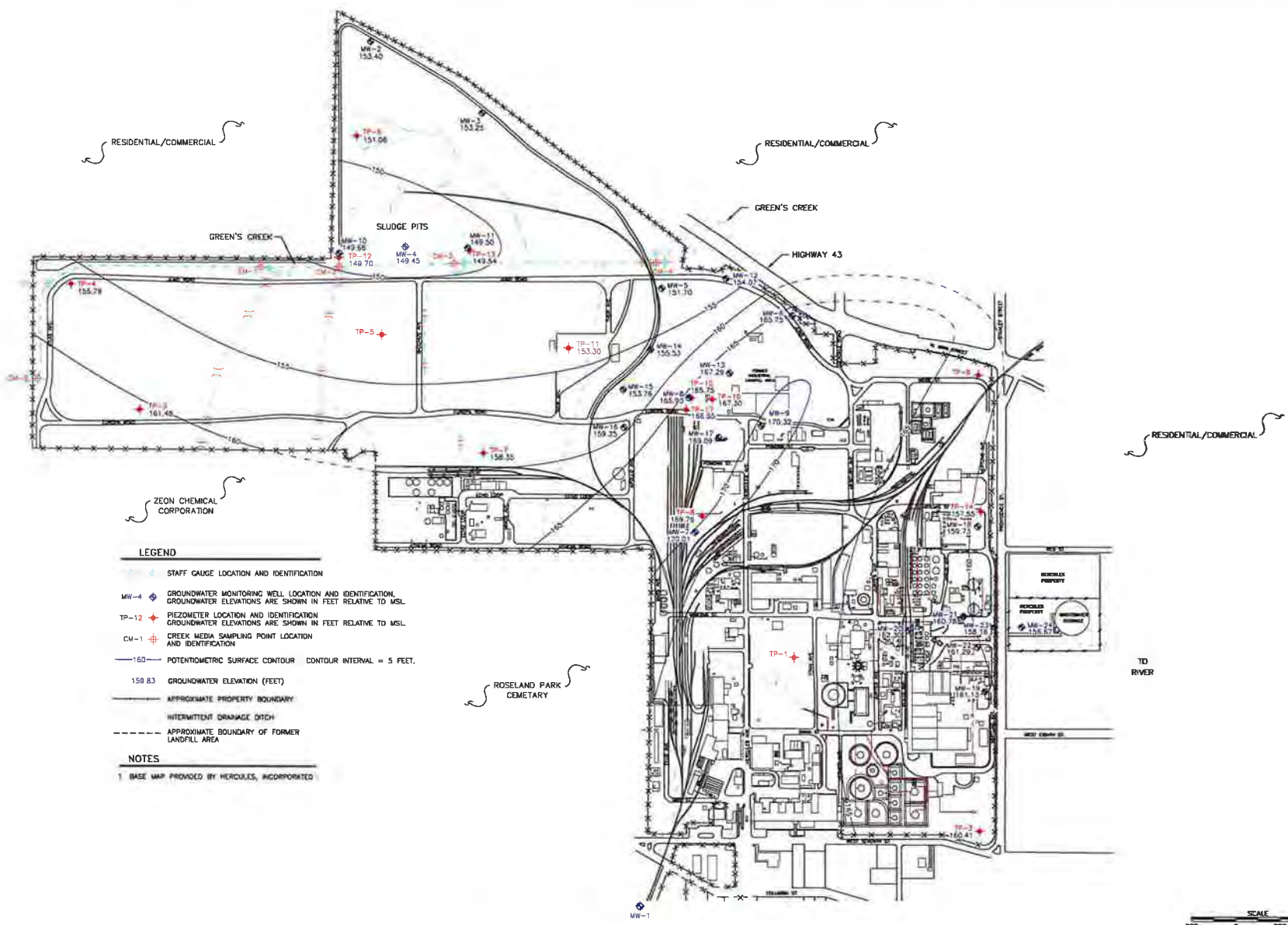
NO.	ISSUED FOR REVIEW	DATE	BY	REVISION



SCALE: 1"=200'
DRAWN: K. SOSON
CHECKED:
REVIEWED:
PROJECT MANAGER: C. WATERS
DATE: 1/24/11

Eco-Systems, Inc.
Consultants, Engineers and Scientists
 Jackson, MS • Meridian, MS • Mobile, AL
 Houston, TX • Nashville, TN • Atlanta, GA
 Hattiesburg, MS • Gulfport, MS

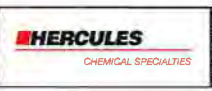
HERCULES INCORPORATED HATTIESBURG, MISSISSIPPI	PROJECT NO. HERCULES EAP FILE NAME HERCULES-020000-0000.dwg TOTAL SHEETS 3	DATE DECEMBER, 2010	0
---	---	------------------------	---



- LEGEND**
- STAFF GAUGE LOCATION AND IDENTIFICATION
 - MW-4 GROUNDWATER MONITORING WELL LOCATION AND IDENTIFICATION. GROUNDWATER ELEVATIONS ARE SHOWN IN FEET RELATIVE TO MSL.
 - TP-12 PIEZOMETER LOCATION AND IDENTIFICATION. GROUNDWATER ELEVATIONS ARE SHOWN IN FEET RELATIVE TO MSL.
 - CM-1 CREEK MEDIA SAMPLING POINT LOCATION AND IDENTIFICATION
 - 160 POTENTIOMETRIC SURFACE CONTOUR (CONTOUR INTERVAL = 5 FEET)
 - 159.83 GROUNDWATER ELEVATION (FEET)
 - APPROXIMATE PROPERTY BOUNDARY
 - INTERMITTENT DRAINAGE DITCH
 - APPROXIMATE BOUNDARY OF FORMER LANDFILL AREA
- NOTES**
- 1 BASE MAP PROVIDED BY HERCULES, INCORPORATED



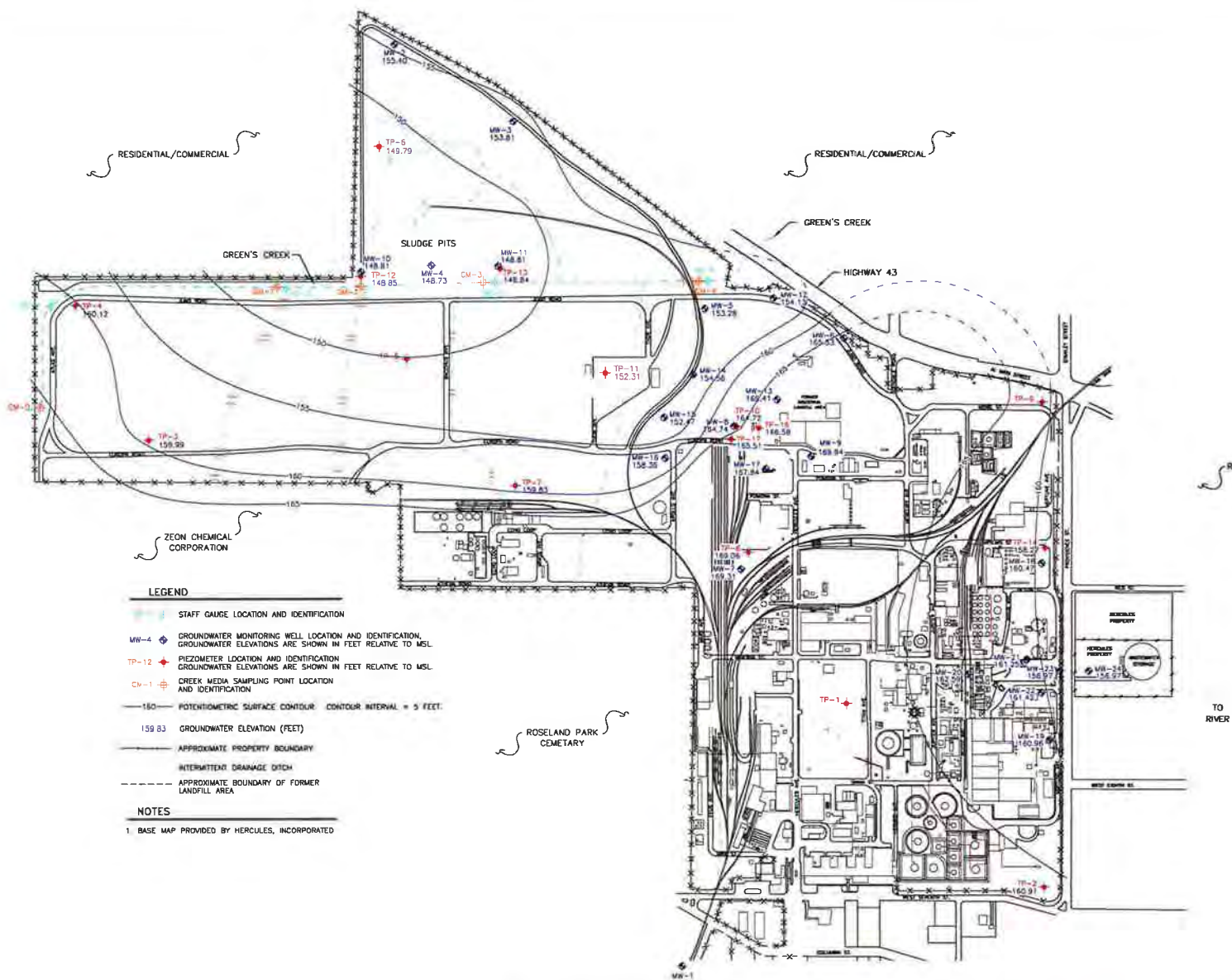
NO.	ISSUED FOR REVIEW	DATE



SCALE: 1"=200'
DRAWN BY: S. DODD
CHECKED:
REVIEWED: 5/27/08
PROJECT MANAGER: C. WALKER
DATE: 5/27/08

Eco-Systems, Inc.
 Consultants, Engineers and Scientists
 JACKSON, MS • MEMPHIS, MS • MOBILE, AL
 HOUSTON, TX • NASHVILLE, TN • ATLANTA, GA
 HATTIESBURG, MS • GULFPORT, MS

HERCULES INCORPORATED HATTIESBURG, MISSISSIPPI	PROJECT No. MS-08-0000000 JOB FILE NAME MS-08-0000000-PCS
POTENTIOMETRIC SURFACE MAP (MAY 10, 2010)	TITLE: 3 REVISION: 0



- LEGEND**
- STAFF GAUGE LOCATION AND IDENTIFICATION
 - MW-4 GROUNDWATER MONITORING WELL LOCATION AND IDENTIFICATION, GROUNDWATER ELEVATIONS ARE SHOWN IN FEET RELATIVE TO MSL.
 - TP-12 PIEZOMETER LOCATION AND IDENTIFICATION, GROUNDWATER ELEVATIONS ARE SHOWN IN FEET RELATIVE TO MSL.
 - CM-1 CREEK MEDIA SAMPLING POINT LOCATION AND IDENTIFICATION
 - 150 POTENTIOMETRIC SURFACE CONTOUR. CONTOUR INTERVAL = 5 FEET.
 - 159.83 GROUNDWATER ELEVATION (FEET)
 - APPROXIMATE PROPERTY BOUNDARY
 - INTERMITTENT DRAINAGE DITCH
 - APPROXIMATE BOUNDARY OF FORMER LANDFILL AREA
- NOTES**
1. BASE MAP PROVIDED BY HERCULES, INCORPORATED



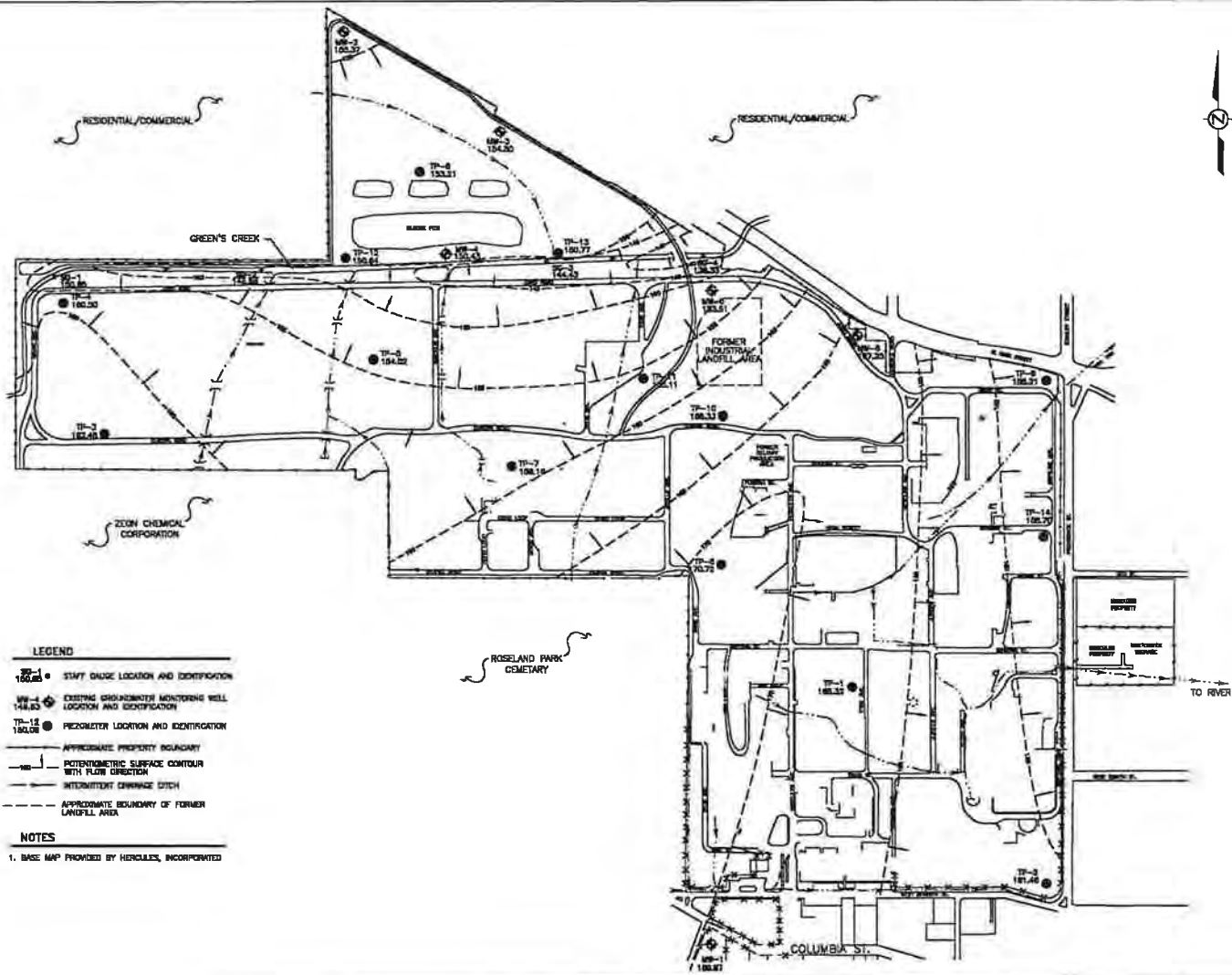
NO.	DATE FOR REVIEW	BY	CURRENT DATE
1	12/21/09		



SCALE: 1"=200'
DRAWN: B. WOOD
CHECKED:
REVIEWED: 12/22/09
PROJECT MANAGER: C. WATSON
DATE: 12/22/09

Eco-Systems, Inc.
 Consultants, Engineers and Scientists
 Jackson, MS • Meridian, MS • Mobile, AL
 Houston, TX • Nashville, TN • Atlanta, GA
 Huntsville, MS • Gulfport, MS

HERCULES INCORPORATED HATTIESBURG, MISSISSIPPI	PROJECT NO. HERCULES-09-00000000
POTENTIOMETRIC SURFACE MAP (DECEMBER 7, 2009)	FIGURE NUMBER 3 0



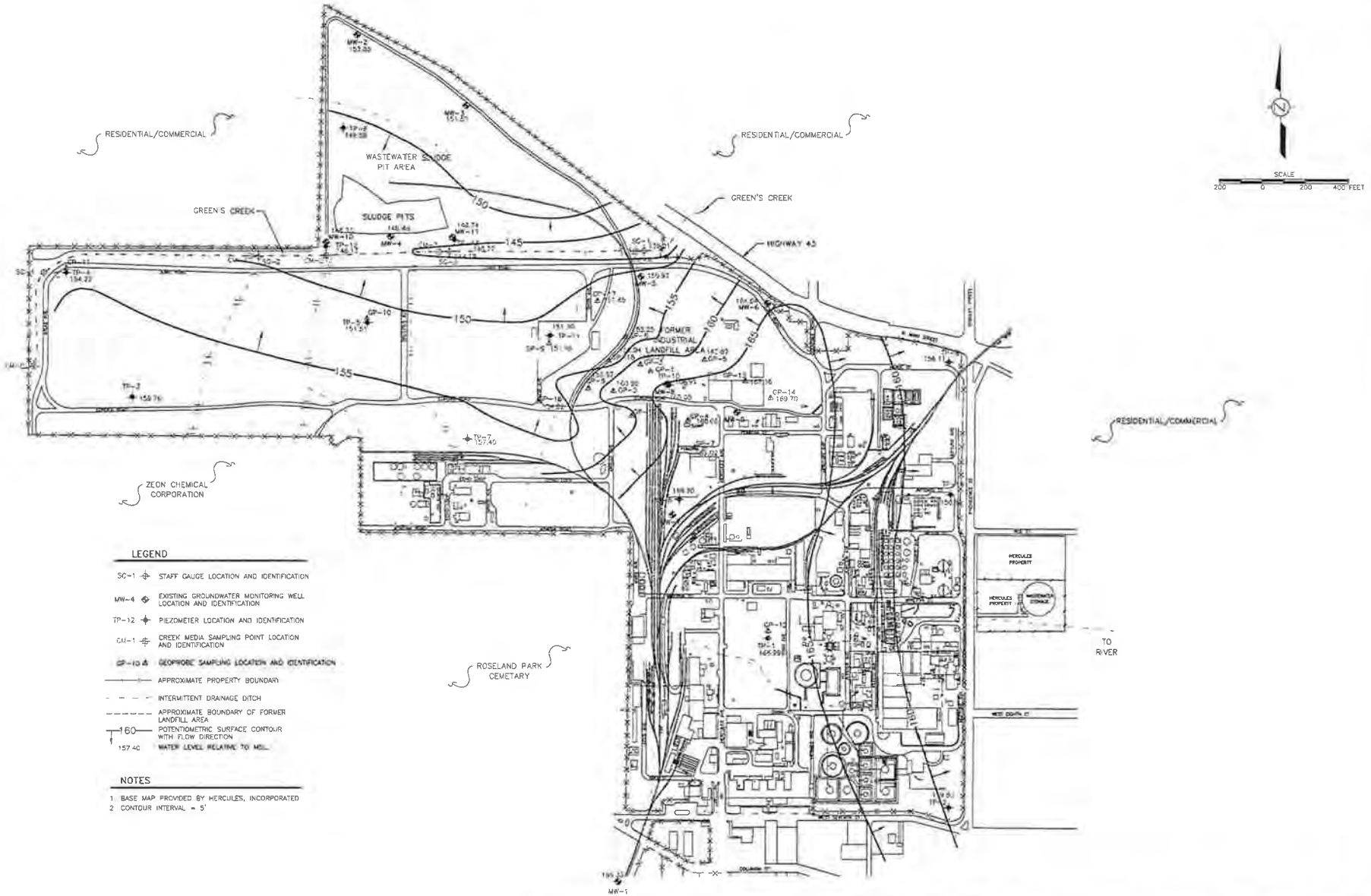
LEGEND

- MW-1 150.04 • STAFF GAUGE LOCATION AND IDENTIFICATION
- MW-2 148.83 • EXISTING GROUNDWATER MONITORING WELL LOCATION AND IDENTIFICATION
- TP-15 150.77 • PIEZOMETER LOCATION AND IDENTIFICATION
- APPROXIMATE PROPERTY BOUNDARY
- POTENTIOMETRIC SURFACE CONTOUR WITH FLOW DIRECTION
- INTERMITTENT DRAINAGE DITCH
- APPROXIMATE BOUNDARY OF FORMER LANDFILL AREA

NOTES

1. BASE MAP PROVIDED BY HERCULES, INCORPORATED

	<p>HERCULES CHEMICAL SPECIALTIES</p>	DATE: 3/18/03 SCALE: 1"=450' DRAWN: K. SISSON CHECKED: REVIEWED: 3-9-03 PROJECT MANAGER:	<p>Eco-Systems, Inc. Consultants, Engineers and Scientists</p>	POTENTIOMETRIC SURFACE MAP MARCH 5, 2003 HERCULES CHEMICAL CO. HATTIESBERG, MISSISSIPPI	PROJECT NO. HER22173 CAD FILE HDR22173-PSMap.dwg FIGURE 5
--	---	---	---	--	--



- LEGEND**
- SC-1 STAFF GAUGE LOCATION AND IDENTIFICATION
 - MW-4 EXISTING GROUNDWATER MONITORING WELL LOCATION AND IDENTIFICATION
 - TP-12 PIEZOMETER LOCATION AND IDENTIFICATION
 - GM-1 GROUND MEDIA SAMPLING POINT LOCATION AND IDENTIFICATION
 - GP-10 GEOPROBE SAMPLING LOCATION AND IDENTIFICATION
 - — — — — APPROXIMATE PROPERTY BOUNDARY
 - - - - - INTERMITTENT DRAINAGE DITCH
 - - - - - APPROXIMATE BOUNDARY OF FORMER LANDFILL AREA
 - 160 POTENTIOMETRIC SURFACE CONTOUR WITH FLOW DIRECTION
 - 157.40 WATER LEVEL RELATIVE TO MSL

- NOTES**
1. BASE MAP PROVIDED BY HERCULES, INCORPORATED
 2. CONTOUR INTERVAL = 5'

NO.	ISSUED FOR REVIEW	BY	DATE
PK.	DESCRIPTION OF REVISION	BY	DATE

HERCULES
CHEMICAL SPECIALTIES

SCALE: 1"=200'
 DRAWN: PHILIP
 CHECKED: CAG JJ-2-03
 PROJECT: 16743E
 PROJECT MANAGER: S. DICK
 DATE: 10/14/03

Eco-Systems, Inc.
 Consultants, Engineers and Scientists
 Jackson, MS • Mobile, AL • Houston, TX

POTENTIOMETRIC SURFACE MAP
 OCTOBER 31, 2008

HERCULES INCORPORATED
 BATESBURG, MISSISSIPPI

PROJECT NO.	16743E
DWG FILE NAME	16743E.dwg
FIGURE	4
REVISION	0