

BTF Process Area and Sewers - SMA 1
 SWMU #13 - Equalization Basin
 SWMU #14 - pH Neutralization Basin
 SWMU #15 - Primary Clarifier
 SWMU #16 - Aeration Basin
 SWMU #17 - Secondary Clarifier
 SWMU #18 - Thickener
 SWMU #19 - Digester
 SWMU #20 - Dewatering Machine
 SWMU #21 - Former Emergency Basin
 SWMU #22 - Polishing Pond
 SWMU #40 - Historic Drainage Ditch
 SWMU #41 - Former Impoundment
 AOC A - Pipe Outfall into Ditch next to BTF Area
 AOC F - BTF Groundwater Plume

Land Disposal Area (LDA) - SMA 2
 SWMU #4 - BTF Sewer
 SWMU #23 - Biological Sludge Disposal Area
 SWMU #24 - Blast Furnace Emission Control Sludge Piles A and B
 SWMU #25 - Stormwater Ditch
 SWMU #38 - Construction Debris Landfill
 SWMU #39 - Blast Furnace Emission Control Sludge Waste Pile

Coke Manufacturing Plant - SMA 3
 SWMU #1 - Quench Towers & Sumps
 SWMU #2 - Quench Tower Pump Basins
 SWMU #3 - Old Quench Tower Settling Basins
 SWMU #5 - Coal Tar Storage Drainage System
 SWMU #6 - Spill Area Around Diesel Tank
 SWMU #7 - Coal Tar Collection Sump
 SWMU #8 - Flushing Liquor Decanter
 SWMU #9 - Flushing Liquor Decanter Sump
 SWMU #10 - Coal Tar Decanter
 SWMU #11 - Coal Tar Decanter
 SWMU #12 - Coal Tar Decanter
 SWMU #37 - BTF Sewer Tar Trap
 AOC E - Coke Plant Groundwater Plume

Former Pig Iron Foundry (PIF) - SMA 5
 SWMU #43 - Pig Machine Slurry Pits
 SWMU #44 - Blast Furnace Ash Boiler Pit
 SWMU #45 - Slag Drying Beds
 AOC C - Former Pig Iron Foundry

Former Chemical Plant (FCP) - SMA 4
 SWMU #26 - Main Process Building
 SWMU #27 - Floor Drain System
 SWMU #28 - Sulfonation Floor Drain
 SWMU #29 - Product Tank Containment Area
 SWMU #30 - Centrifuge Waste Water Tank
 SWMU #31 - Monohydrate Floor Drain and Sump
 SWMU #32 - Drum Storage Area
 SWMU #33 - Plant Drum Storage Area
 SWMU #34 - Wastewater Neutralization System
 SWMU #35 - Mineral Wool Waste Piles
 SWMU #36 - Used Oil Tank
 SWMU #42 - Former Aboveground Storage tanks (ASTs)
 AOC B - Drainage Ditch next to Shuttlesworth Drive and 35th Ave.
 AOC D - Former Chemical Plant (FCP) Groundwater Plume

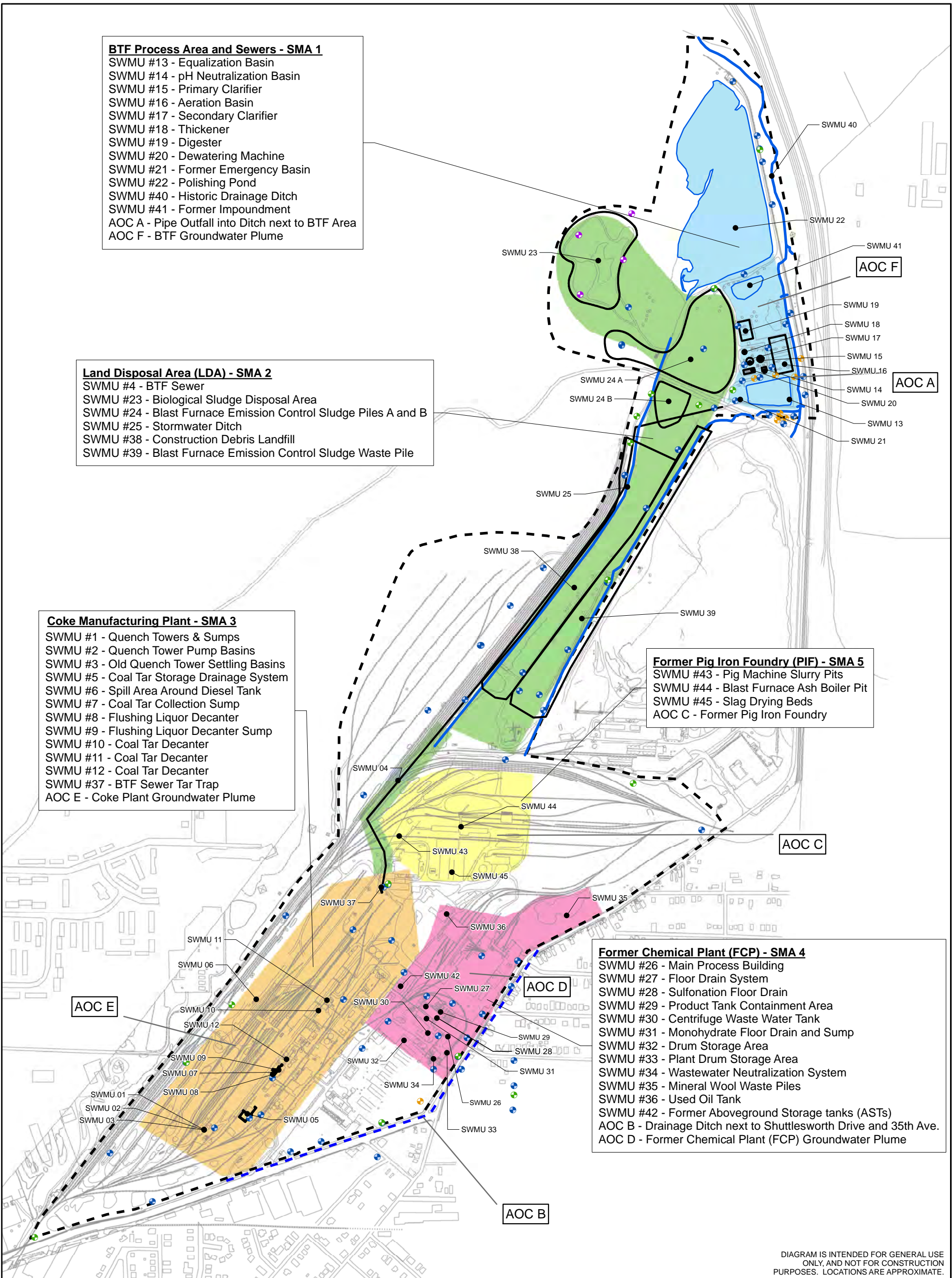
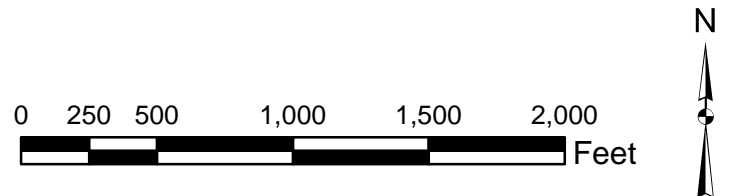


DIAGRAM IS INTENDED FOR GENERAL USE ONLY, AND NOT FOR CONSTRUCTION PURPOSES. LOCATIONS ARE APPROXIMATE.

Legend

- Proposed Solid Waste Management Areas (SMAs)**
- BTF Process Area and Sewer - SMA 1
 - Land Disposal Area - SMA 2
 - Coke Manufacturing Plant - SMA 3
 - Former Chemical Plant - SMA 4
 - Former Pig Iron Foundry - SMA 5

- Notes:**
- 1) SWMU - Solid Waste Management Unit
 - 2) Management Area boundaries are used for approximation.
 - 3) AOC - Area of Concern



Project Mngr: TWR	Scale: SHOWN	Terracon Consulting Engineers & Scientists 110 12th St. North Birmingham, Alabama 35203 Phone: (205) 942-1289 Fax: (205) 443-5302	SITE MAP	FIGURE
Checked By: TWR	Date: 7/24/2012		CLIENT: Walter Coke 3500 35th Avenue North Birmingham, AL 35207	1
Approved By: TWR	Project No: E1127096			
Drawn By: GFA	File Name: Figure 1			

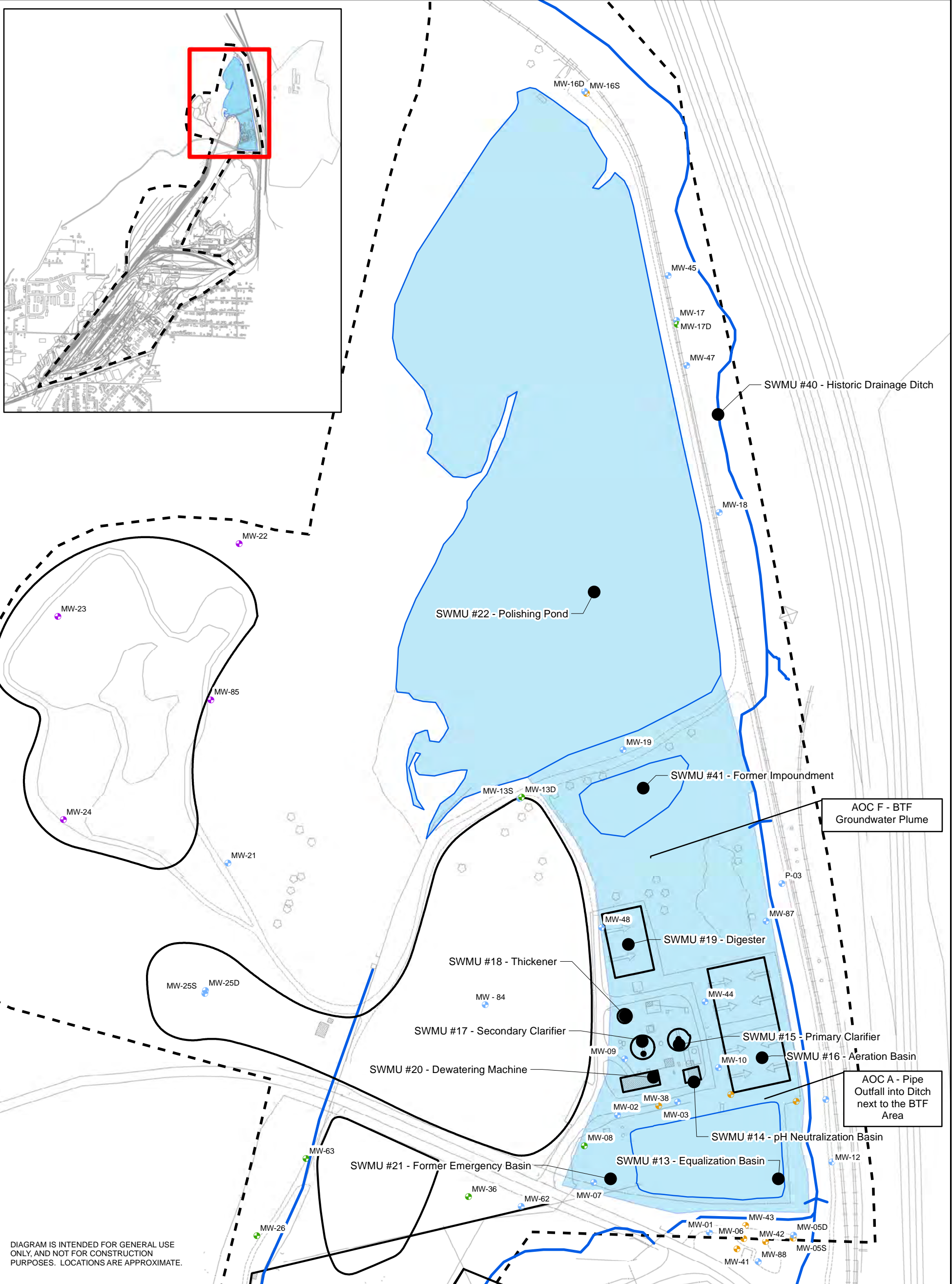


DIAGRAM IS INTENDED FOR GENERAL USE ONLY, AND NOT FOR CONSTRUCTION PURPOSES. LOCATIONS ARE APPROXIMATE.

Legend

- BTF Process Area and Sewers - SMA 1
- Shallow Bedrock Monitoring Well
- Deep Bedrock Monitoring Well
- Residuum or Mixed Monitoring Well
- Non-Conasauga Limestone Monitoring Well

Notes:

- 1) SWMU - Solid Waste Management Unit
- 2) Management Area boundaries are used for approximation.
- 3) AOC - Area of Concern



Project Mngr:	TWR
Checked By:	TWR
Approved By:	TWR
Drawn By:	GFA

Scale:	SHOWN
Date:	8/16/2012
Project No.:	E1127096
File Name:	Figure 2

Terracon
 Consulting Engineers & Scientists
 110 12th St. North Birmingham, Alabama 35203
 Phone: (205) 942-1289 Fax: (205) 443-5302

BTF PROCESS AREA AND SEWERS - SMA 1	
CLIENT:	Walter Coke
3500 35th Avenue North Birmingham, AL 35207	

FIGURE
2

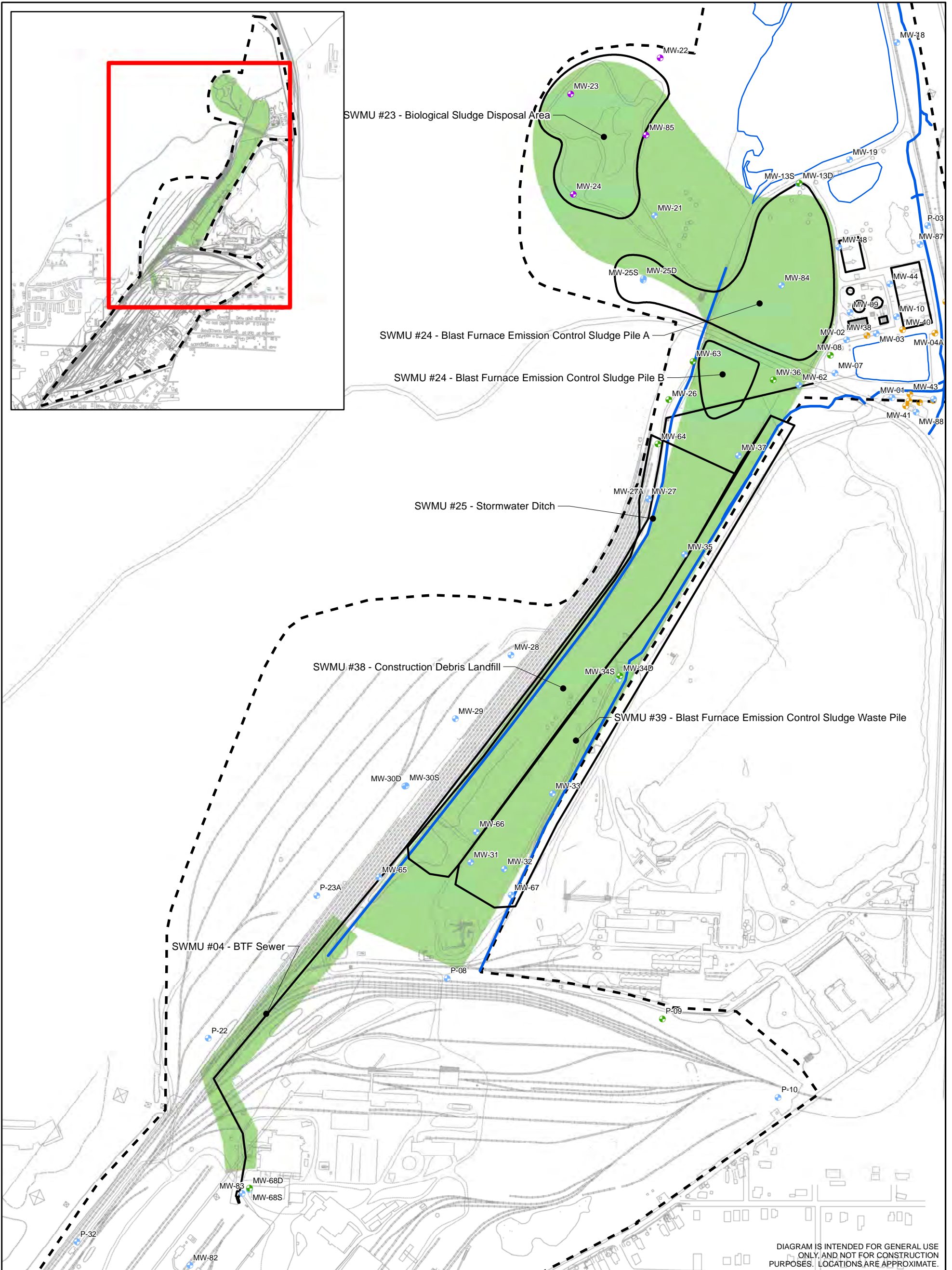


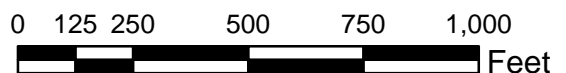
DIAGRAM IS INTENDED FOR GENERAL USE ONLY, AND NOT FOR CONSTRUCTION PURPOSES. LOCATIONS ARE APPROXIMATE.

Legend

- Land Disposal Area - SMA 2
- Shallow Bedrock Monitoring Well
- Deep Bedrock Monitoring Well
- Residium or Mixed Monitoring Well
- Non-Conasauga Limestone Monitoring Well

Notes:

- 1) SWMU - Solid Waste Management Unit
- 2) Management Area boundaries are used for approximation.
- 3) AOC - Area of Concern



Project Mngr:	TWR
Checked By:	TWR
Approved By:	TWR
Drawn By:	GFA

Scale:	SHOWN
Date:	8/16/2012
Project No.:	E1127096
File Name:	Figure 3

Terracon
 Consulting Engineers & Scientists
 110 12th St. North Birmingham, Alabama 35203
 Phone: (205) 942-1289 Fax: (205) 443-5302

LAND DISPOSAL AREA (LDA) - SMA 2	
CLIENT:	Walter Coke 3500 35th Avenue North Birmingham, AL 35207

FIGURE	3
--------	---

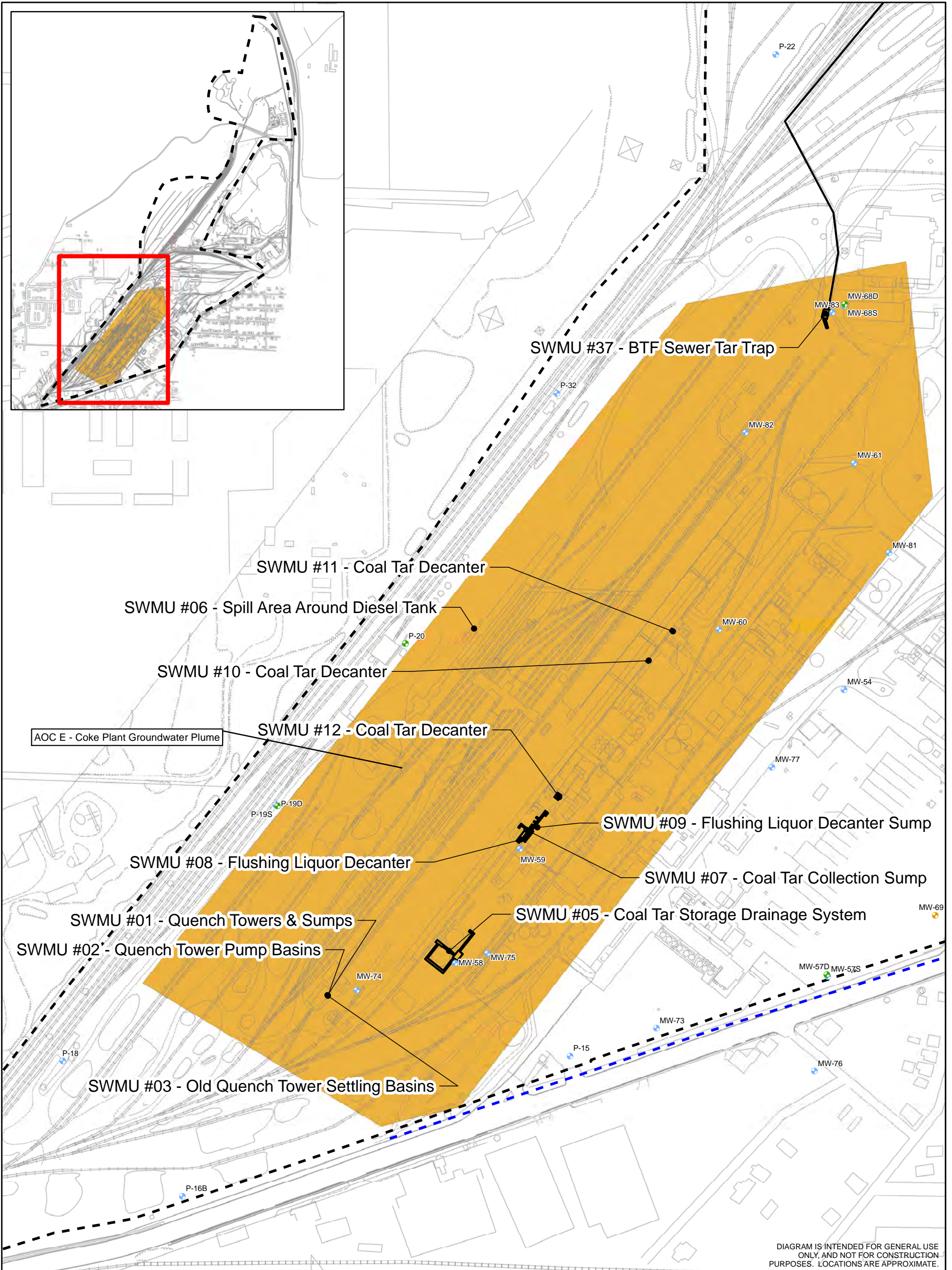


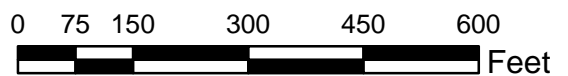
DIAGRAM IS INTENDED FOR GENERAL USE ONLY, AND NOT FOR CONSTRUCTION PURPOSES. LOCATIONS ARE APPROXIMATE.

Legend

- Coke Manufacturing Plant - SMA 3
- Shallow Bedrock Monitoring Well
- Deep Bedrock Monitoring Well
- Residium or Mixed Monitoring Well
- Non-Conasauga Limestone Monitoring Well

Notes:

- 1) SWMU - Solid Waste Management Unit
- 2) Management Area boundaries are used for approximation.
- 3) AOC - Area of Concern



Project Mngr:	TWR
Checked By:	TWR
Approved By:	TWR
Drawn By:	GFA

Scale:	SHOWN
Date:	8/16/2012
Project No.:	E1127096
File Name:	Figure 4

Terracon
 Consulting Engineers & Scientists
 110 12th St. North Birmingham, Alabama 35203
 Phone: (205) 942-1289 Fax: (205) 443-5302

COKE MANUFACTURING PLANT - SMA 3	
CLIENT:	Walter Coke 3500 35th Avenue North Birmingham, AL 35207

FIGURE
4

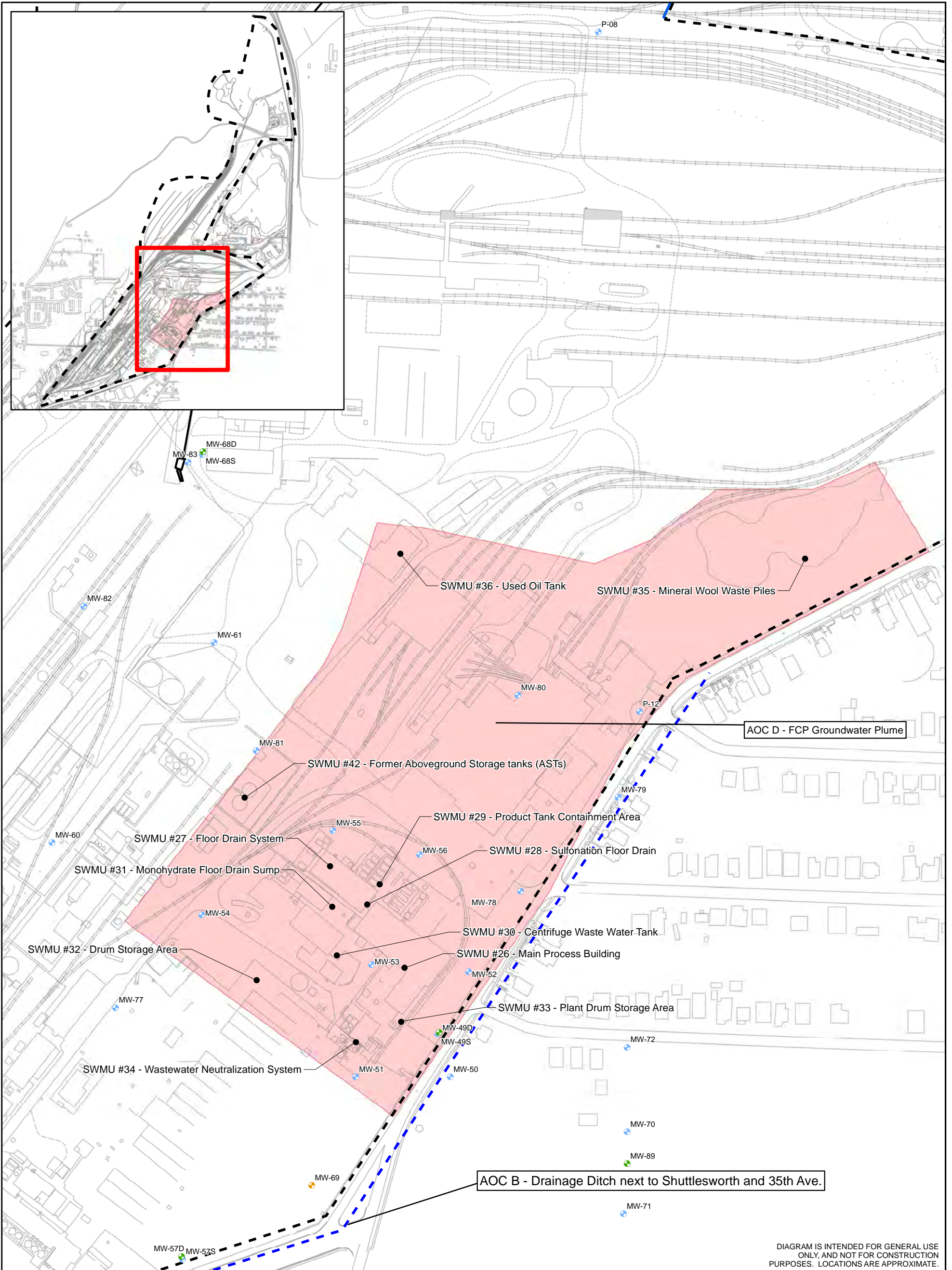


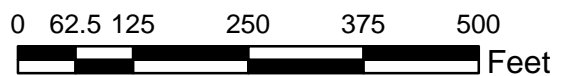
DIAGRAM IS INTENDED FOR GENERAL USE ONLY, AND NOT FOR CONSTRUCTION PURPOSES. LOCATIONS ARE APPROXIMATE.

Legend

- Former Chemical Plant - SMA 4
- Shallow Bedrock Monitoring Well
- Deep Bedrock Monitoring Well
- Residuum or Mixed Monitoring Well
- Non-Conasauga Limestone Monitoring Well

Notes:

- 1) SWMU - Solid Waste Management Unit
- 2) Management Area boundaries are used for approximation.
- 3) AOC - Area of Concern



Project Mngr:	TWR
Checked By:	TWR
Approved By:	TWR
Drawn By:	GFA

Scale:	SHOWN
Date:	8/16/2012
Project No.:	E1127096
File Name:	Figure 5

Terracon
 Consulting Engineers & Scientists
 110 12th St. North Birmingham, Alabama 35203
 Phone: (205) 942-1289 Fax: (205) 443-5302

FORMER CHEMICAL PLANT (FCP) - SMA 4	
CLIENT:	Walter Coke
3500 35th Avenue North Birmingham, AL 35207	

FIGURE	5
--------	---

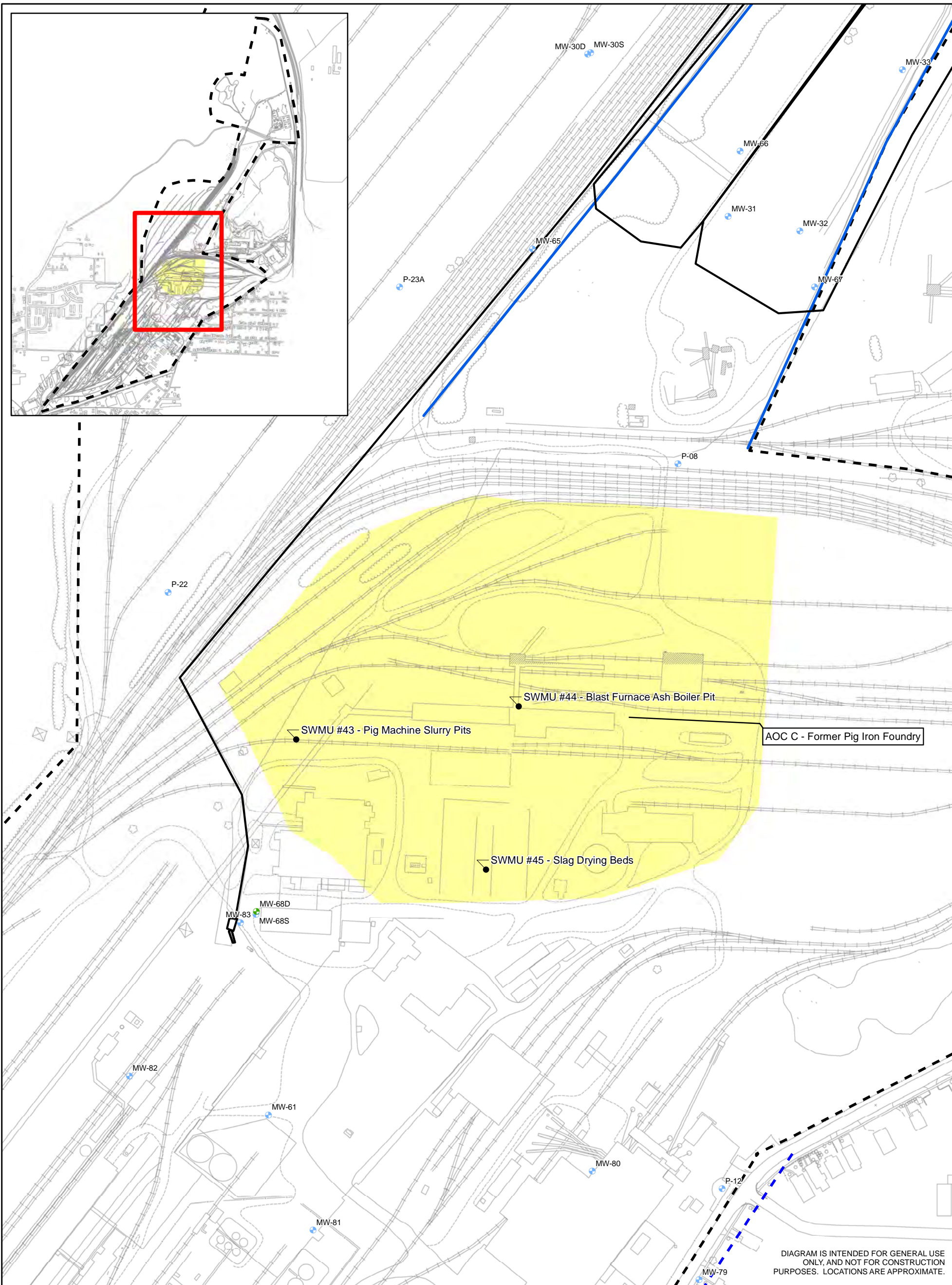


DIAGRAM IS INTENDED FOR GENERAL USE ONLY, AND NOT FOR CONSTRUCTION PURPOSES. LOCATIONS ARE APPROXIMATE.

Legend

- Former Pig Iron Foundry - SMA 5
- Shallow Bedrock Monitoring Well
- Deep Bedrock Monitoring Well
- Residium or Mixed Monitoring Well
- Non-Conasauga Limestone Monitoring Well

Notes:

- 1) SWMU - Solid Waste Management Unit
- 2) Management Area boundaries are used for approximation.
- 3) AOC - Area of Concern



Project Mngr:	TWR
Checked By:	TWR
Approved By:	TWR
Drawn By:	GFA

Scale:	SHOWN
Date:	8/16/2012
Project No:	E1127096
File Name:	Figure 6

Terracon
 Consulting Engineers & Scientists
 110 12th St. North Birmingham, Alabama 35203
 Phone: (205) 942-1289 Fax: (205) 443-5302

FORMER PIG IRON FOUNDRY (PIF) - SMA 5	
CLIENT:	Walter Coke
3500 35th Avenue North Birmingham, AL 35207	

FIGURE
6