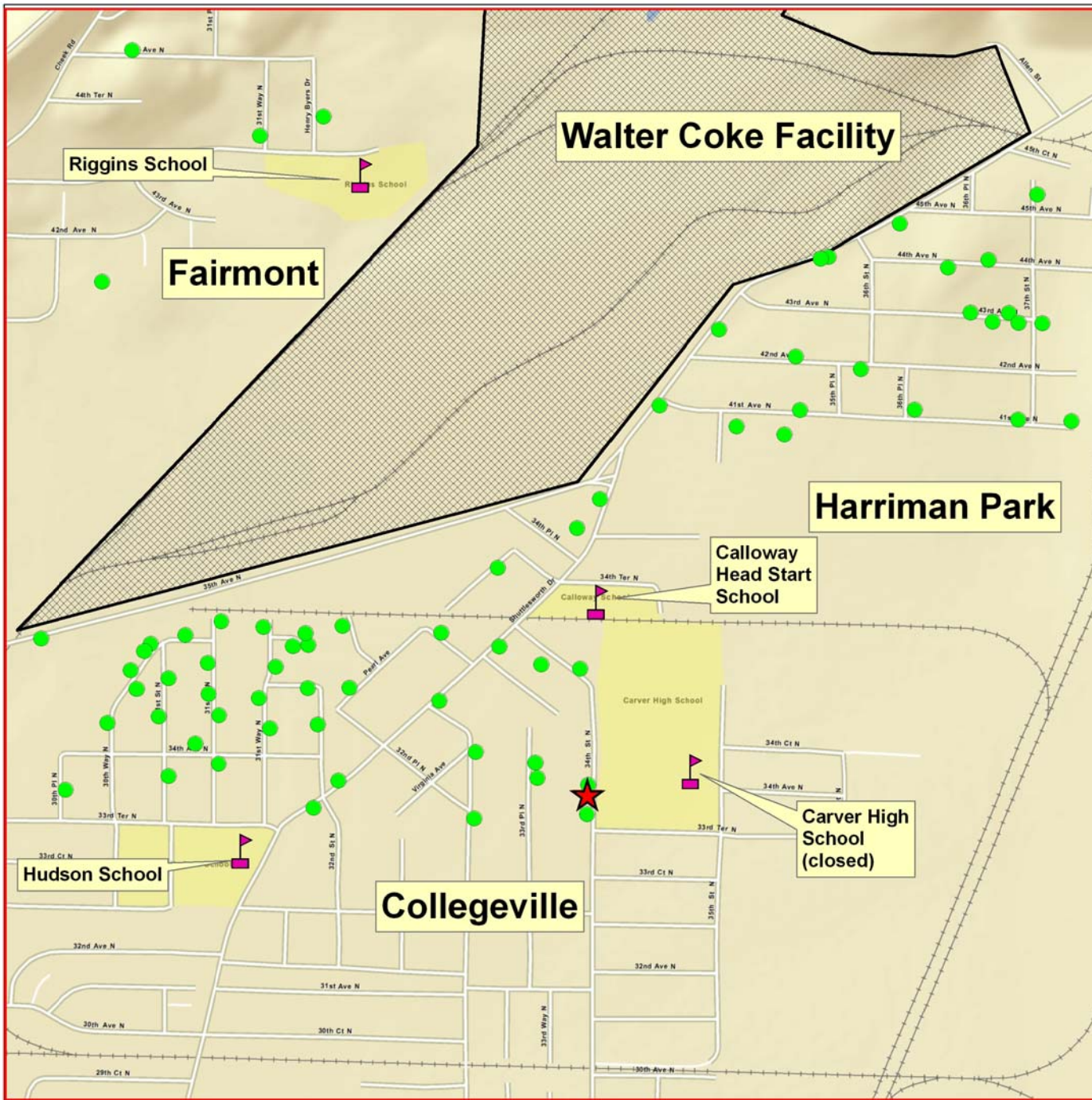


Sampling Data Compared to Screening Levels Arsenic

Community Soil Sampling Conducted by Walter Coke, Inc.



Birmingham, Alabama

Jefferson County

Birmingham



Arsenic

Legend



Below Screening Level (39 mg/kg)



At or Above Screening Level (39 mg/kg)

NOTE:

- Soil screening levels are conservative risk-based values developed by EPA that are health-based. Results above screening levels may present a 1 in 10,000 (1×10^{-4}) increased cancer risk over a lifetime.
- Based upon the sampling data compared against screening levels, it will be determined whether further investigation or cleanup may be warranted.
- Another map will be issued when final cleanup levels are developed.

References:

1. Walter Coke Residential Sampling Report
2. EPA Data Evaluation Report



DRAFT

0.2 0.1 0 Miles

Date Created: October, 2010
GEO Section, EPA R4

Map Name:
WalterCoke Arsenic4.mxd

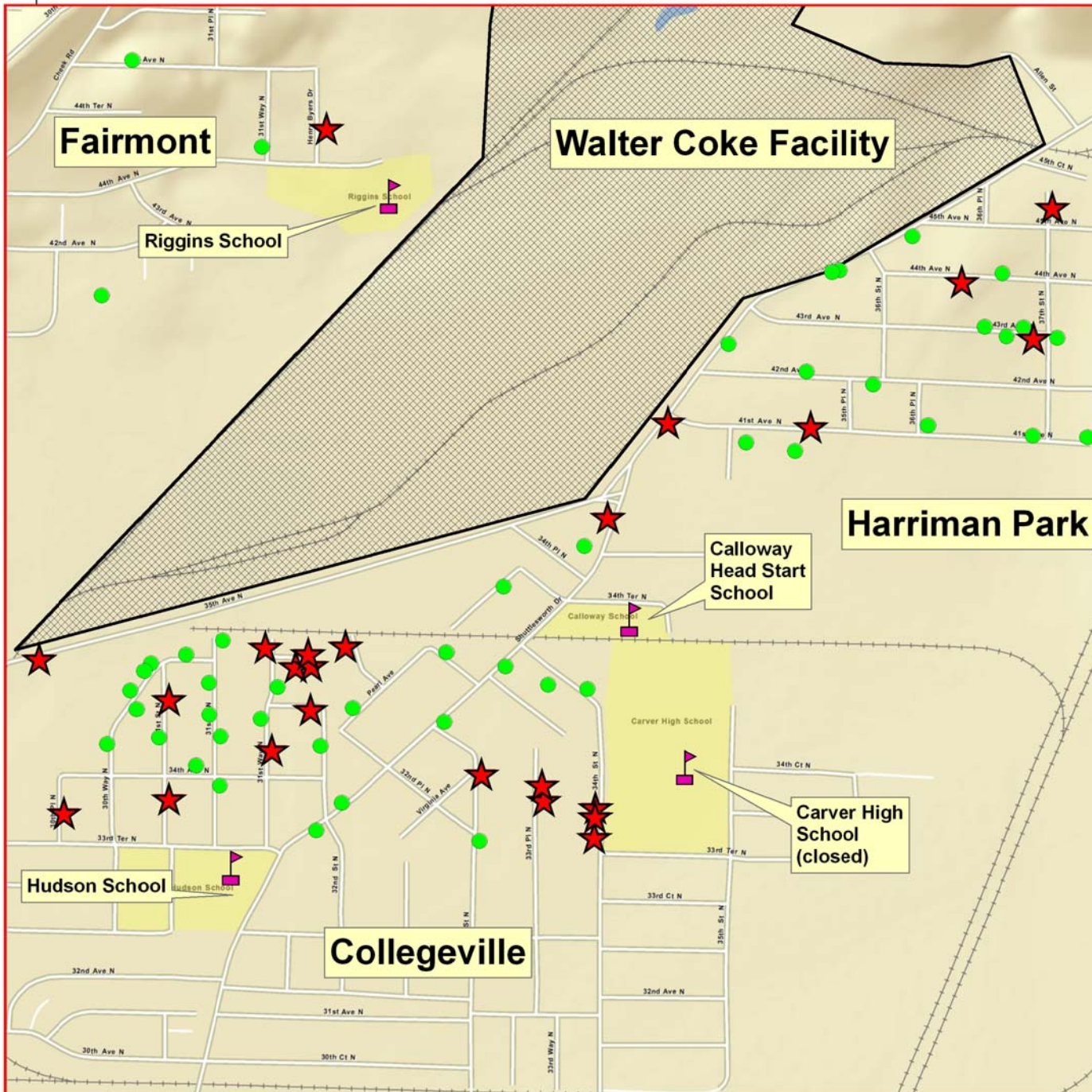
Map Author:
Ravi Rao, 404-562-8349

EPA does not warrant the accuracy, completeness, or timeliness of the information shown. The information herein is subject to revision and is not in final form. EPA shall not be liable for any detrimental reliance upon the information shown.
-DRAFT-

This map has not been submitted to the EPA peer review process

Sampling Data Compared to Screening Levels BaP TEQ

Community Soil Sampling Conducted by Walter Coke, Inc.



Birmingham, Alabama

Jefferson County

Birmingham



BaP TEQ = Benzo (a) Pyrene Toxicity Equivalents

Legend

- Below Screening Level (1.5 mg/kg)
- ★ At or Above Screening Level (1.5 mg/kg)

NOTE:

- Soil screening levels are conservative risk-based values developed by EPA that are health-based. Results above screening levels may present a 1 in 10,000 (1×10^{-4}) increased cancer risk over a lifetime.
- Based upon the sampling data compared against screening levels, it will be determined whether further investigation or cleanup may be warranted.
- Another map will be issued when final cleanup levels are developed.

References:

1. Walter Coke Residential Sampling Report
2. EPA Data Evaluation Report

DRAFT



0.1 0.05 0 Miles

Date Created: October, 2010
GEO Section, EPA R4

Map Name:
WalterCoke BaP4.mxd

Map Author:
Ravi Rao, 404-562-8349

EPA does not warrant the accuracy, completeness, or timeliness of the information shown. The information herein is subject to revision and is not in final form. EPA shall not be liable for any detrimental reliance upon the information shown.
-DRAFT-
This map has not been submitted to the EPA peer review process