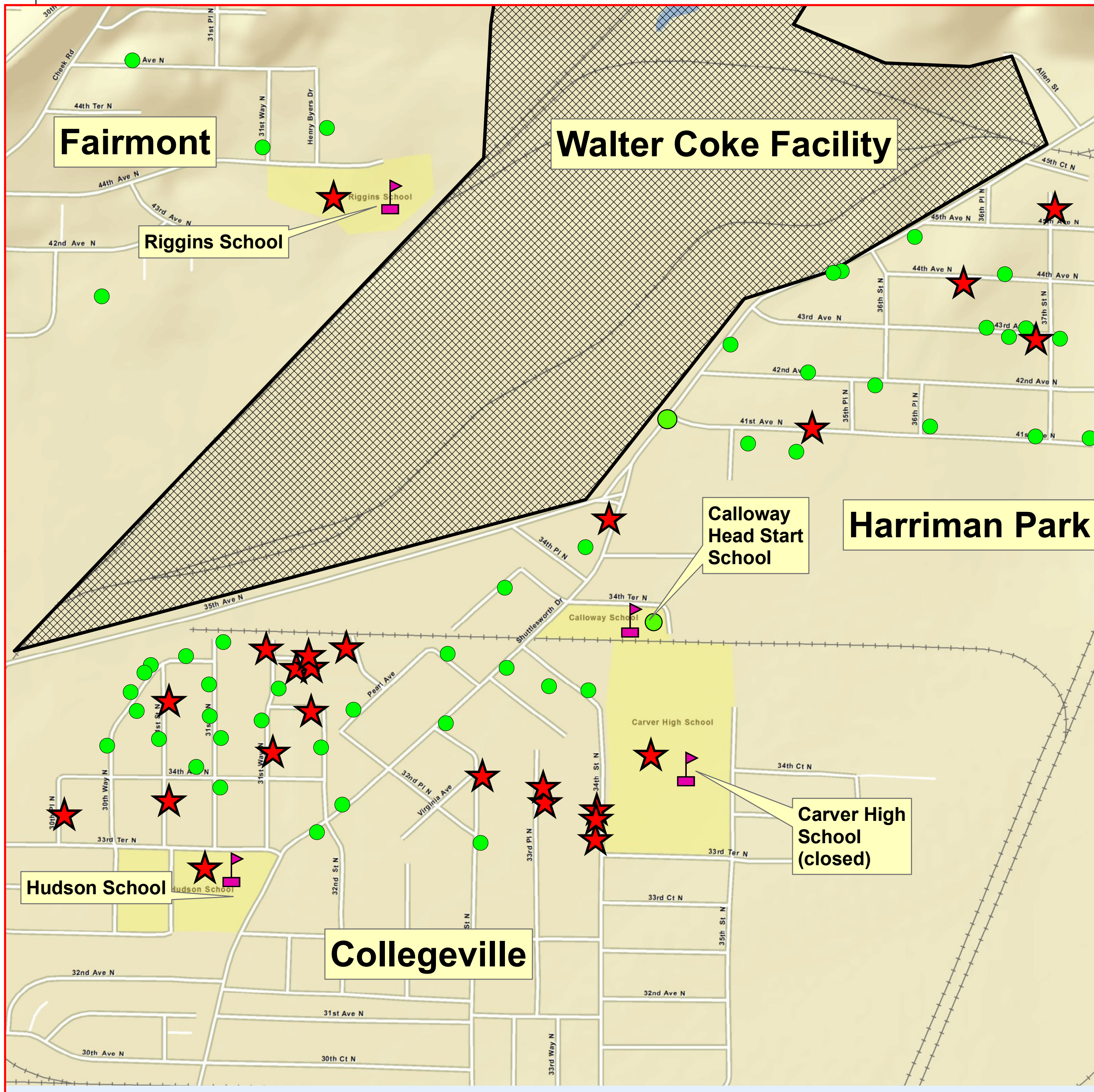


# Sampling Data Compared to Cleanup Levels BaP TEQ

Community Soil Sampling Conducted by Walter Coke, Inc.



## Birmingham, Alabama

Jefferson County



Birmingham



BaP TEQ = Benzo (a) Pyrene  
Toxicity Equivalents

### Legend

- Below Cleanup Level (1.5 mg/kg)
- ★ Above Cleanup Level (1.5 mg/kg)

### NOTE:

• Soil Cleanup levels are conservative risk-based values developed by EPA that are health-based. Results above Cleanup levels may present a 1 in 10,000 ( $1 \times 10^{-4}$ ) increased cancer risk over a lifetime.

### References:

1. Walter Coke Residential Sampling Report
2. EPA Data Evaluation Report
3. EPA Cleanup Level Correspondence

**DRAFT**



0.1 0.05 0 Miles

Date Created: April, 2011  
GEO Section, EPA R4

Map Name:  
WalterCoke BaP5 Cleanup2.mxd

Map Author:  
Ravi Rao, 404-562-8349

EPA does not warrant the accuracy, completeness, or timeliness of the information shown. The information herein is subject to revision and is not in final form. EPA shall not be liable for any detrimental reliance upon the information shown.  
-DRAFT-

This map has not been submitted to the EPA peer review process