

SITE LOCATION MAP

Revised Phase I Sampling and
Analysis Work Plan

HERCULES INCORPORATED
Hattiesburg, Mississippi



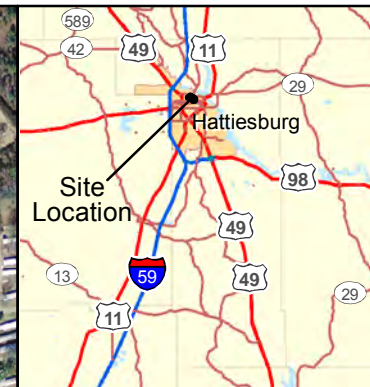
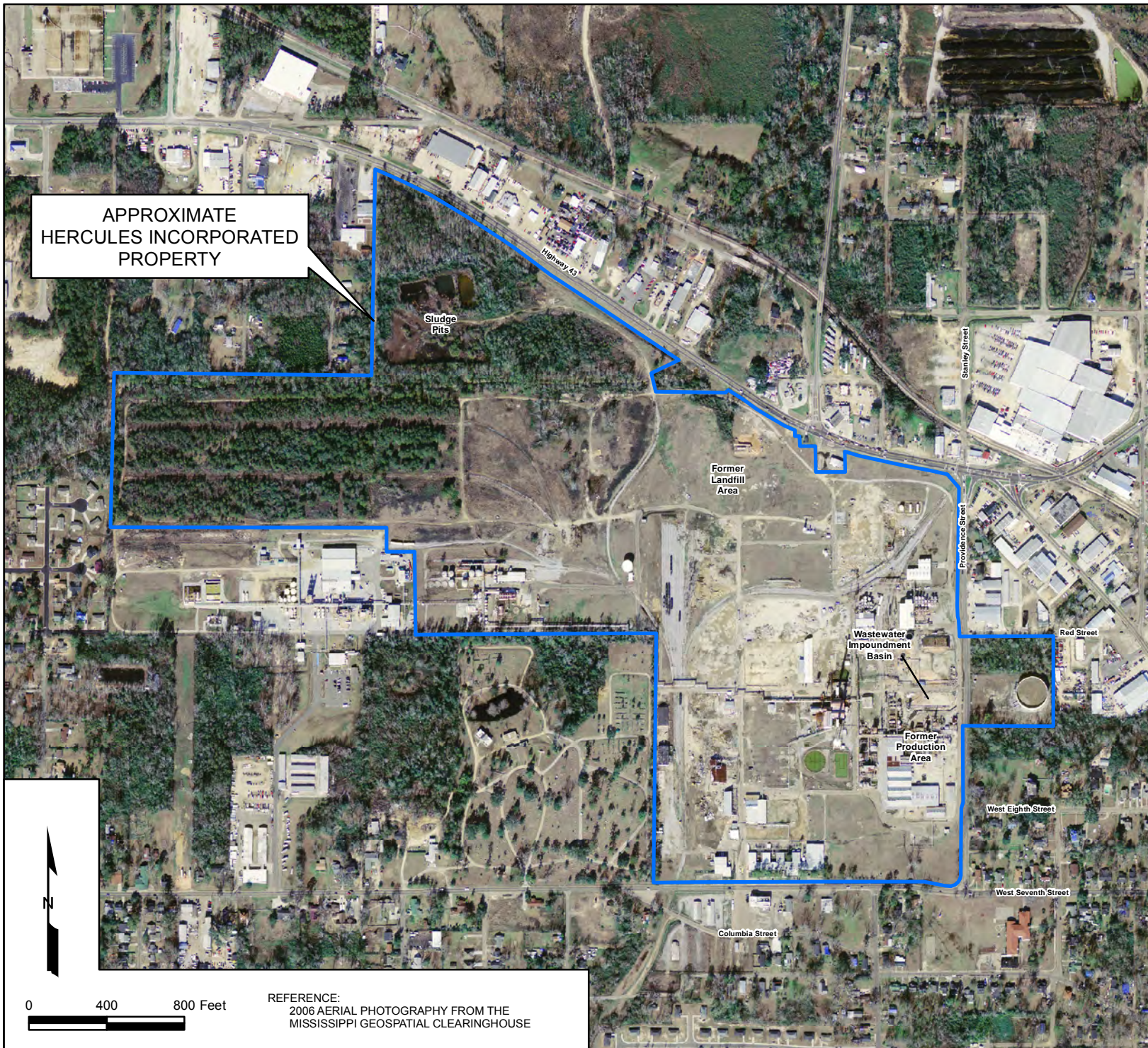
10352 PLAZA AMERICANA DRIVE
BATON ROUGE, LA 70816
TEL: 225-292-1004
FAX: 225-218-9677
WWW.ARCADIS-US.COM

Legend

- Approximate Hercules Property
- Half Mile Radius
- Four Mile Radius

PROJECT MANAGER: JC	CHECKED BY: CD
DRAWING FILE:	GIS FILE:
DRAWING BY: JEC	DATE: 06/28/2011
PROJECT NUMBER: LA002999.0006	FIGURE NUMBER: 1

REFERENCE:
USGS QUADRANGLE MAP, 100K SERIES
HATTIESBURG, MISSISSIPPI



SITE LAYOUT MAP

AERIAL

Revised Phase I Sampling and
Analysis Work Plan

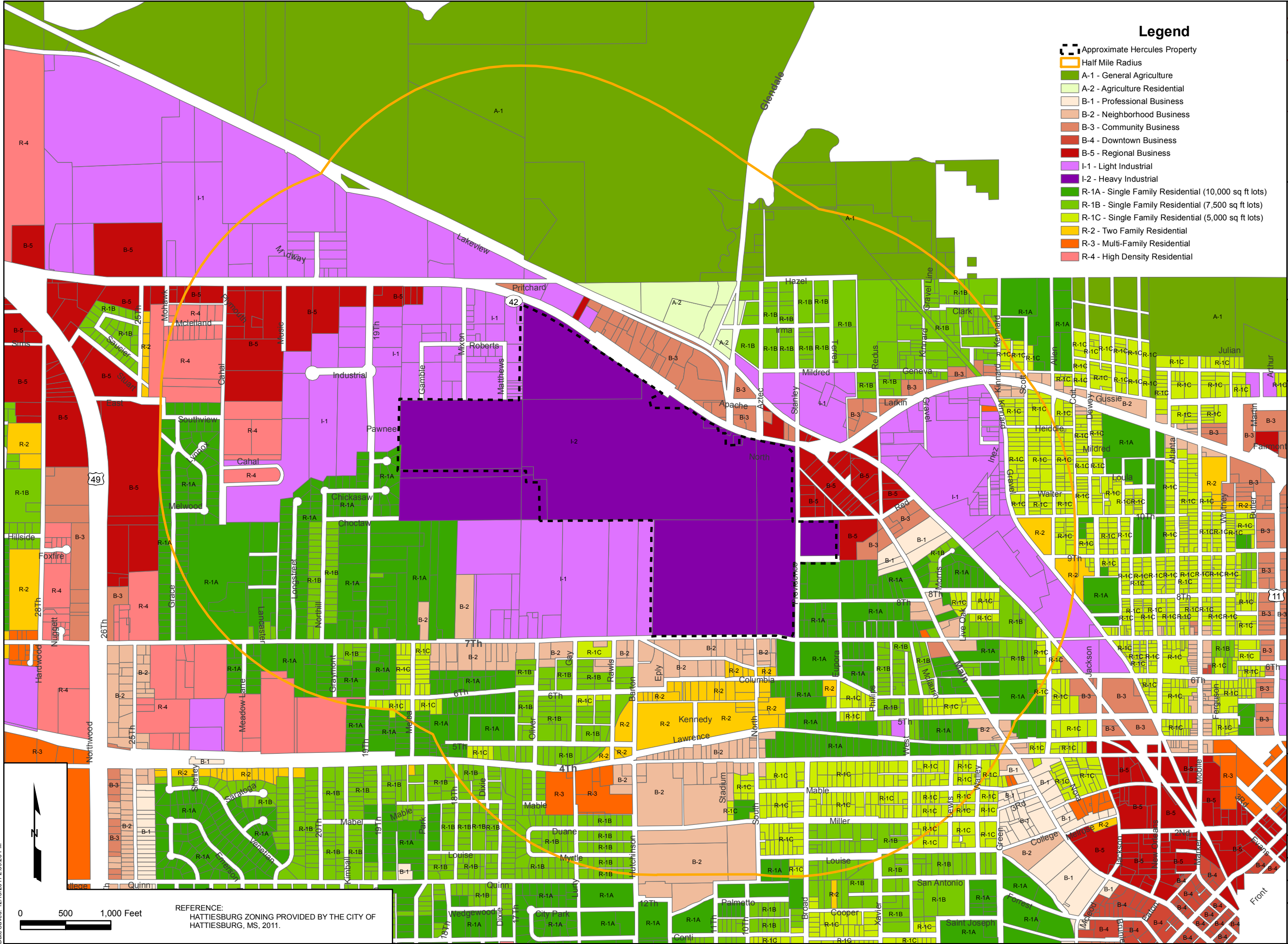
HERCULES INCORPORATED
613 W. 7th Street
Hattiesburg, Mississippi



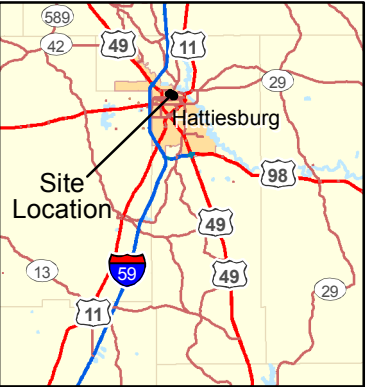
10352 PLAZA AMERICANA DRIVE
BATON ROUGE, LA 70816
TEL: 225-292-1004
FAX: 225-218-9677
WWW.ARCADIS-US.COM

PROJECT MANAGER: GHC	CHECKED BY: CD
DRAWING FILE:	GIS FILE:
DRAWING BY: JEC	DATE: 07/07/2011
PROJECT NUMBER: LA002999.0006	FIGURE NUMBER: 2

REFERENCE:
2006 AERIAL PHOTOGRAPHY FROM THE
MISSISSIPPI GEOSPATIAL CLEARINGHOUSE



- Legend**
- Approximate Hercules Property
 - Half Mile Radius
 - A-1 - General Agriculture
 - A-2 - Agriculture Residential
 - B-1 - Professional Business
 - B-2 - Neighborhood Business
 - B-3 - Community Business
 - B-4 - Downtown Business
 - B-5 - Regional Business
 - I-1 - Light Industrial
 - I-2 - Heavy Industrial
 - R-1A - Single Family Residential (10,000 sq ft lots)
 - R-1B - Single Family Residential (7,500 sq ft lots)
 - R-1C - Single Family Residential (5,000 sq ft lots)
 - R-2 - Two Family Residential
 - R-3 - Multi-Family Residential
 - R-4 - High Density Residential



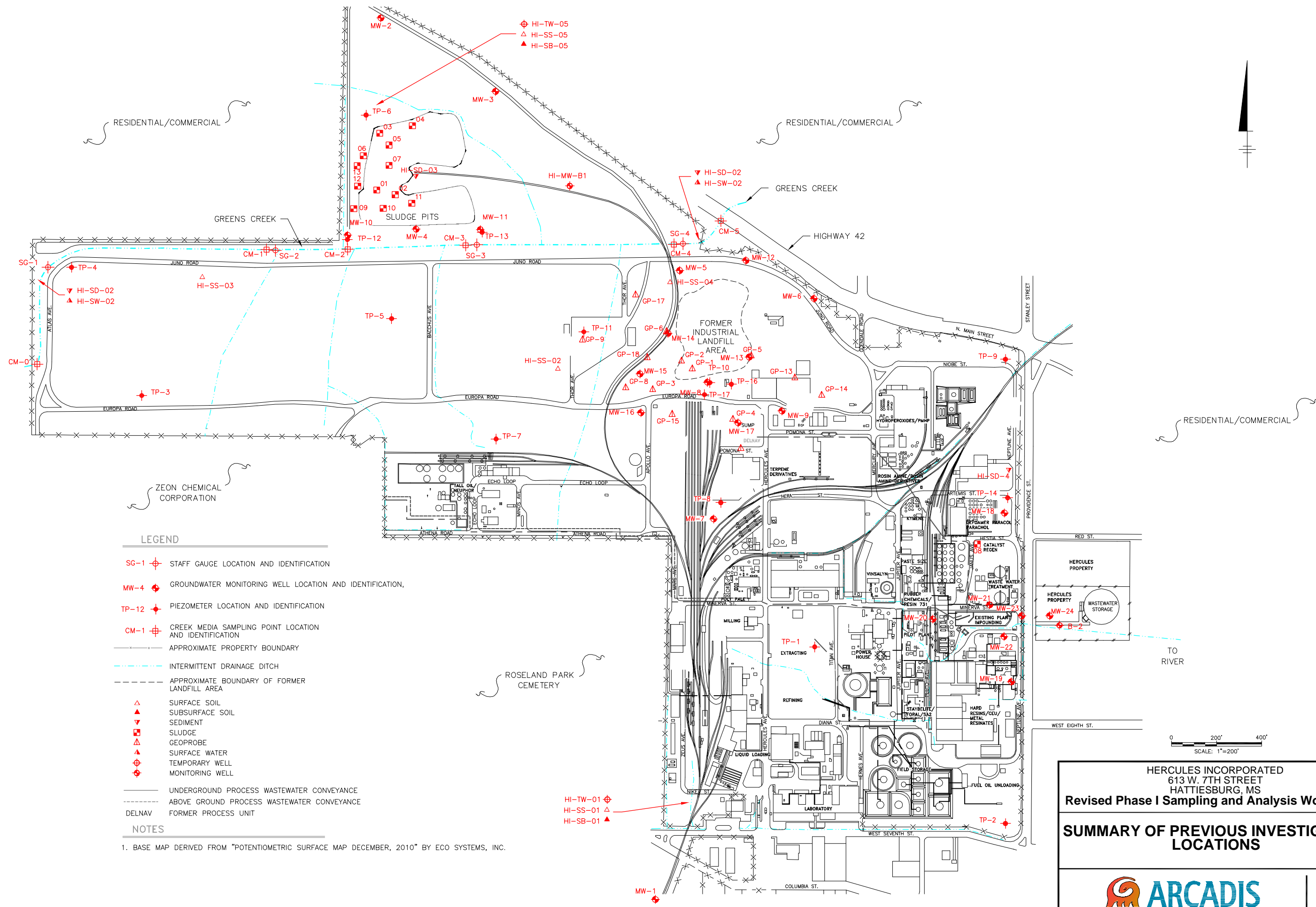
**CITY
ZONING MAP**

**Revised Phase I Sampling and
Analysis Work Plan**

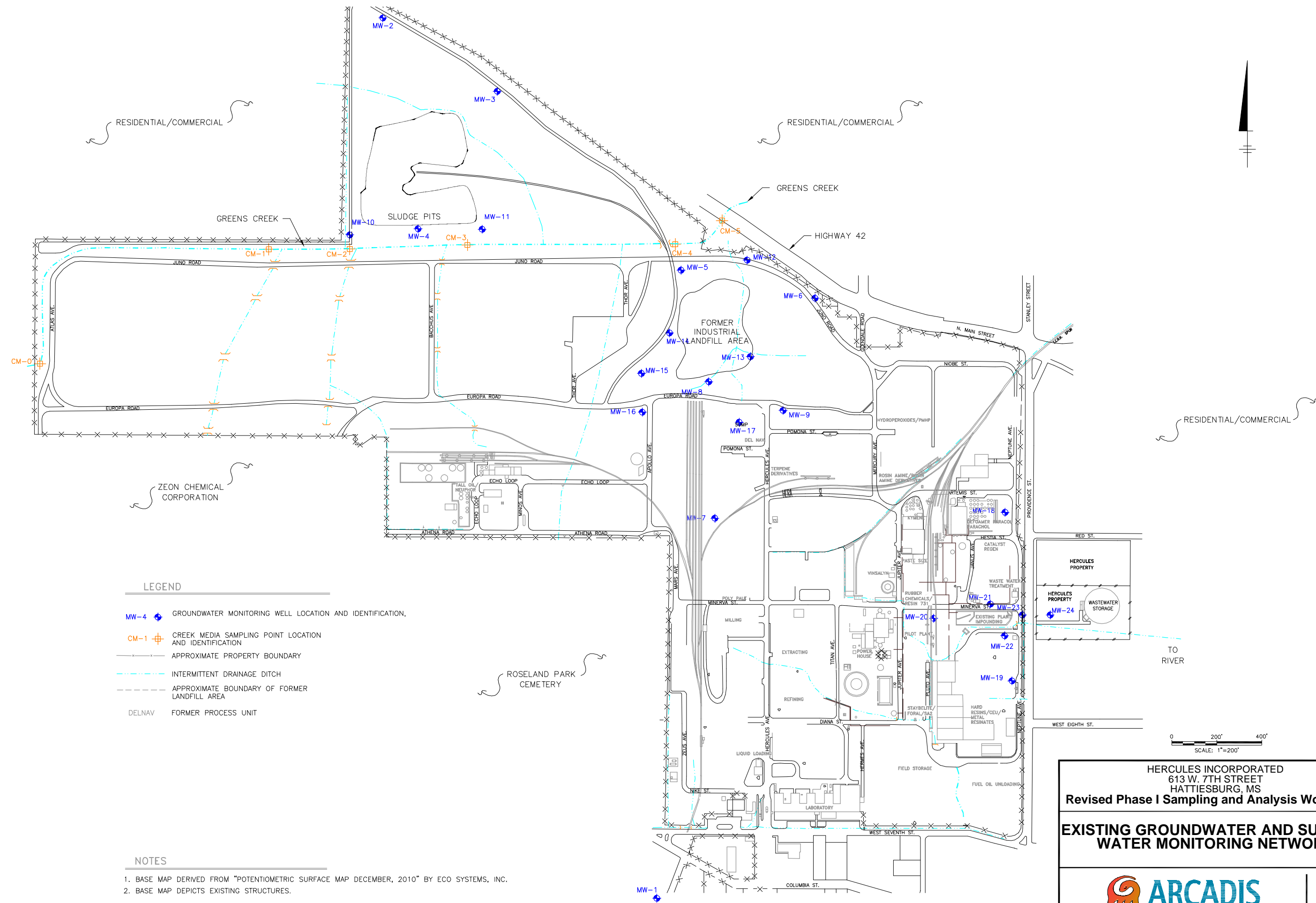
HERCULES INCORPORATED
613 W. 7th Street
Hattiesburg, Mississippi

ARCADIS
10352 PLAZA AMERICANA DRIVE
BATON ROUGE, LA 70816
TEL: 225-292-1004
FAX: 225-218-9677
WWW.ARCADIS-US.COM

PROJECT MANAGER: JE	CHECKED BY: CD
DRAWING FILE:	GIS FILE:
DRAWING BY: JEC	DATE: 06/28/2011
PROJECT NUMBER: LA002999.0006	FIGURE NUMBER: 3



DE: R. PETRIE S. BELL LD: SOTHON MEN PIC: Opt PM: (Reqd) TM: Opt LVR: Option+ OFF+ REF+
G:\PROJECT\Ashland\LA02999-0006\Figures\Final\2999-06-05.dwg LAYOUT: 55A-06-11/11/2011 10:21 AM ACADVER: 17.05 (LMS TECH) PAGES: 17 PLOT: 12/13/2011 9:36 AM BY: MEN, SOTHON
XREFS: 02999X02
IMAGES: PROJECTNAME: AshlandTitle2

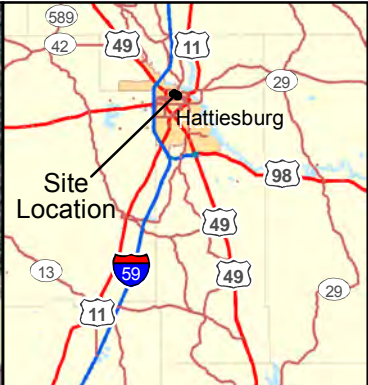
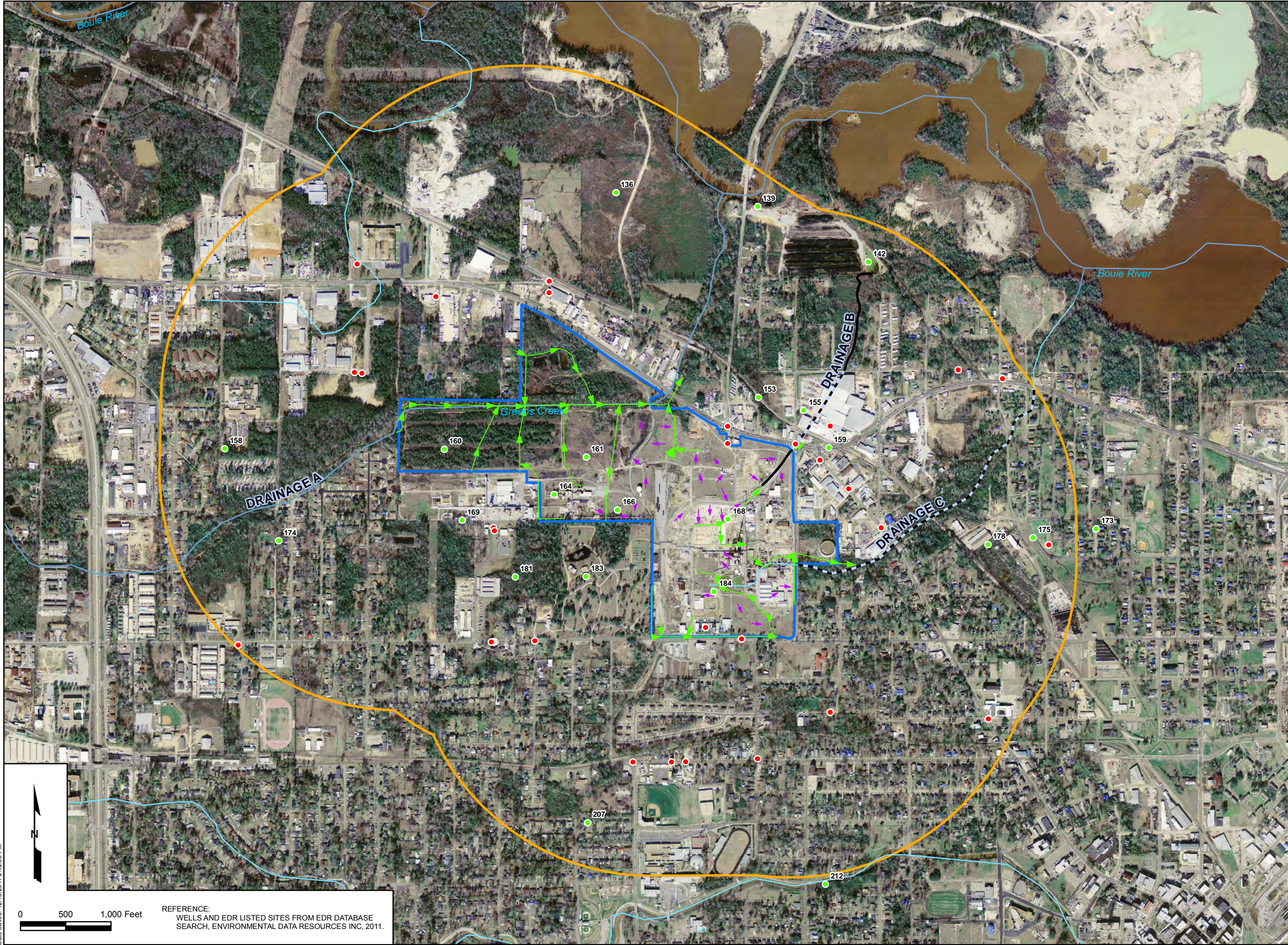


HERCULES INCORPORATED
613 W. 7TH STREET
HATTIESBURG, MS

Revised Phase I Sampling and Analysis Work Plan

EXISTING GROUNDWATER AND SURFACE
WATER MONITORING NETWORK

FIGURE
5



SURFICIAL DRAINAGE AND WELL LOCATION MAP

Revised Phase I Sampling and Analysis Work Plan

HERCULES INCORPORATED
613 W. 7th Street
Hattiesburg, Mississippi



10352 PLAZA AMERICANA DRIVE
BATON ROUGE, LA 70816
TEL: 225-292-1004
FAX: 225-218-9677
WWW.ARCADIS-US.COM

Legend

- EDR Identified Potential Environmental Site
- Wells
- Culverted Ditch
- Open Ditch
- Sheet Flow Direction
- Water Flow Direction
- Approximate Hercules Property
- Half Mile Radius

PROJECT MANAGER:
JE

CHECKED BY:
CD

DRAWING FILE:

GIS FILE:

DRAWING BY:
JEC

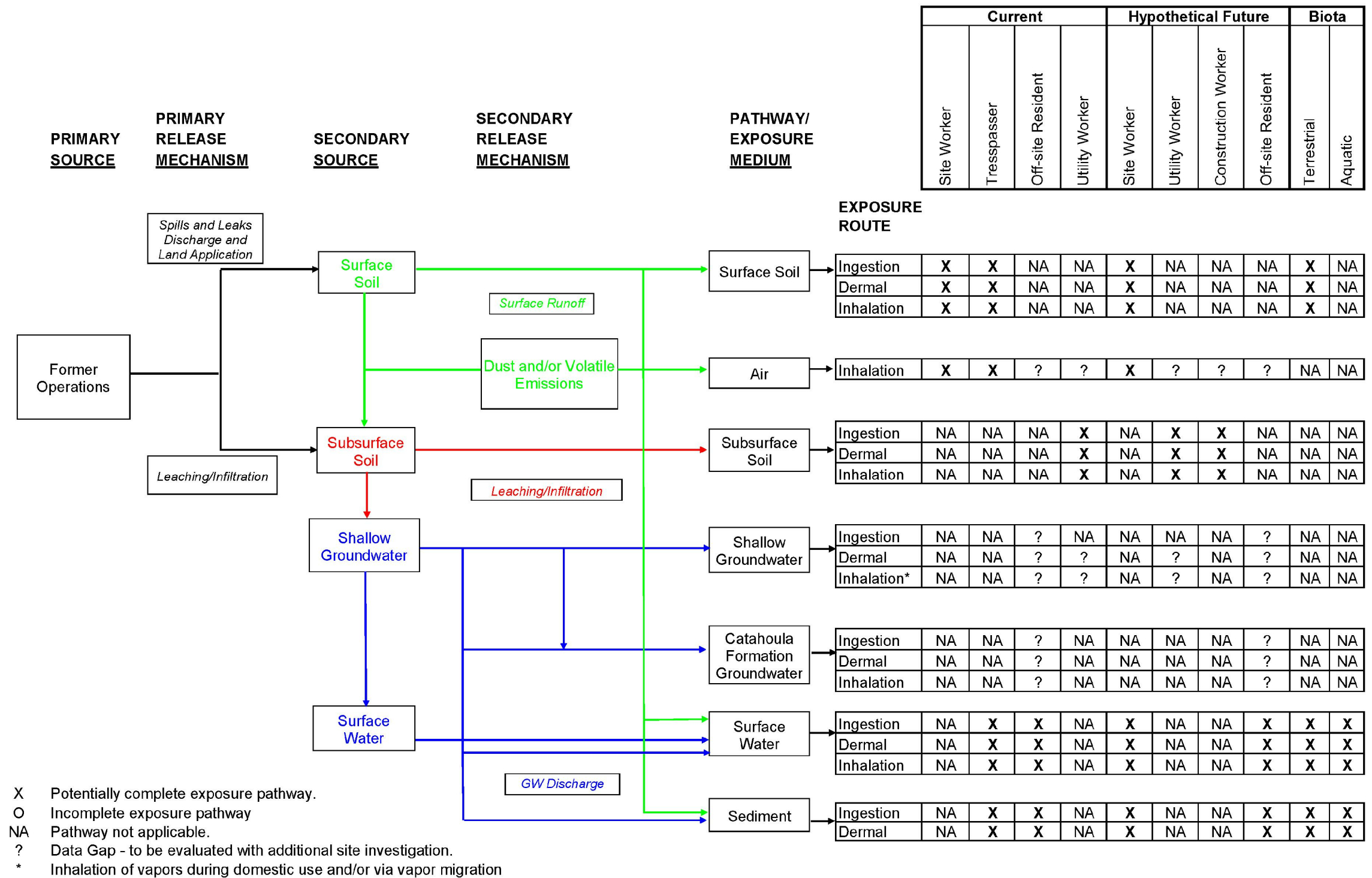
DATE:
11/09/2011

PROJECT NUMBER:

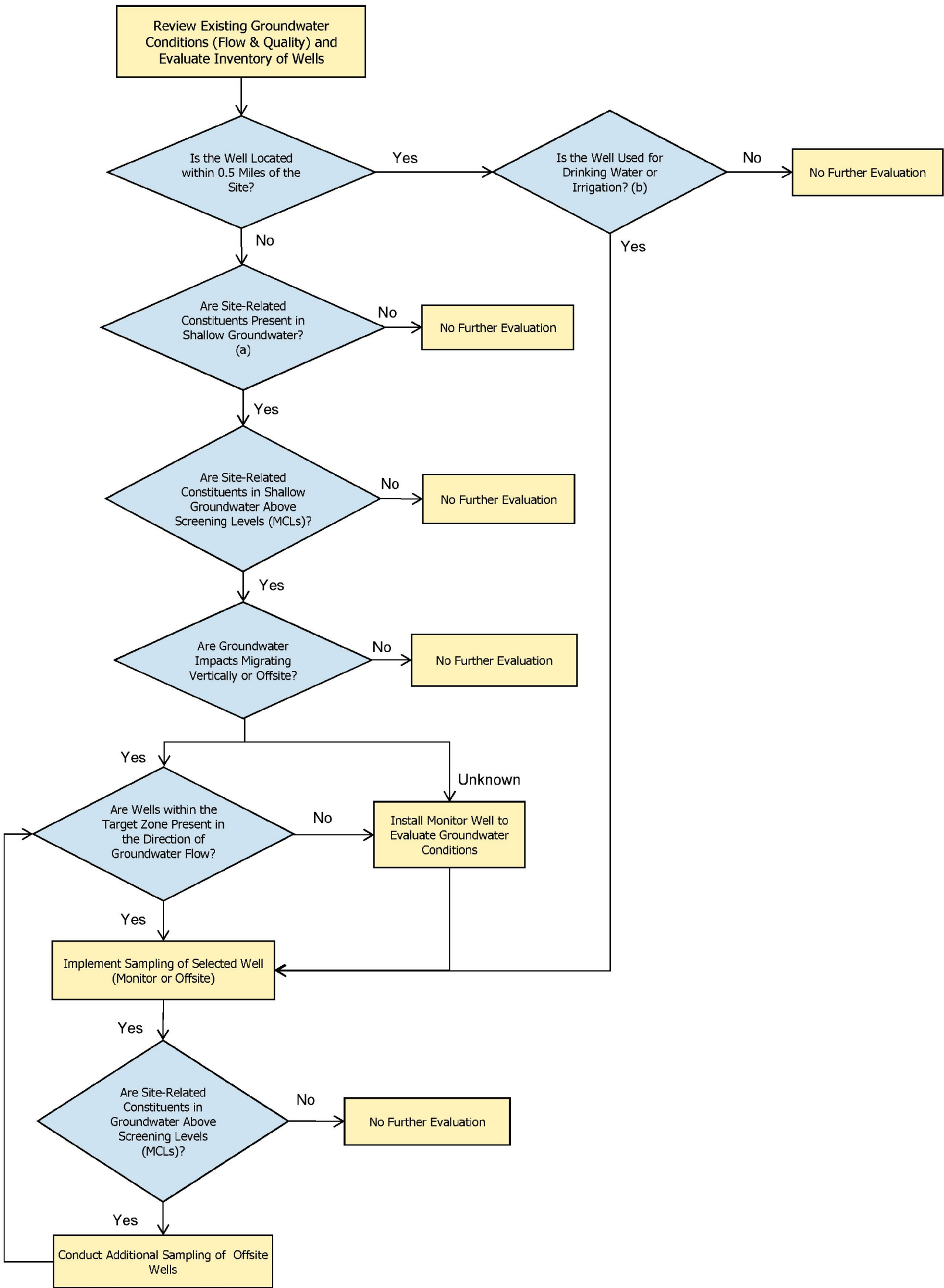
FIGURE NUMBER:

LA002999.0006

6

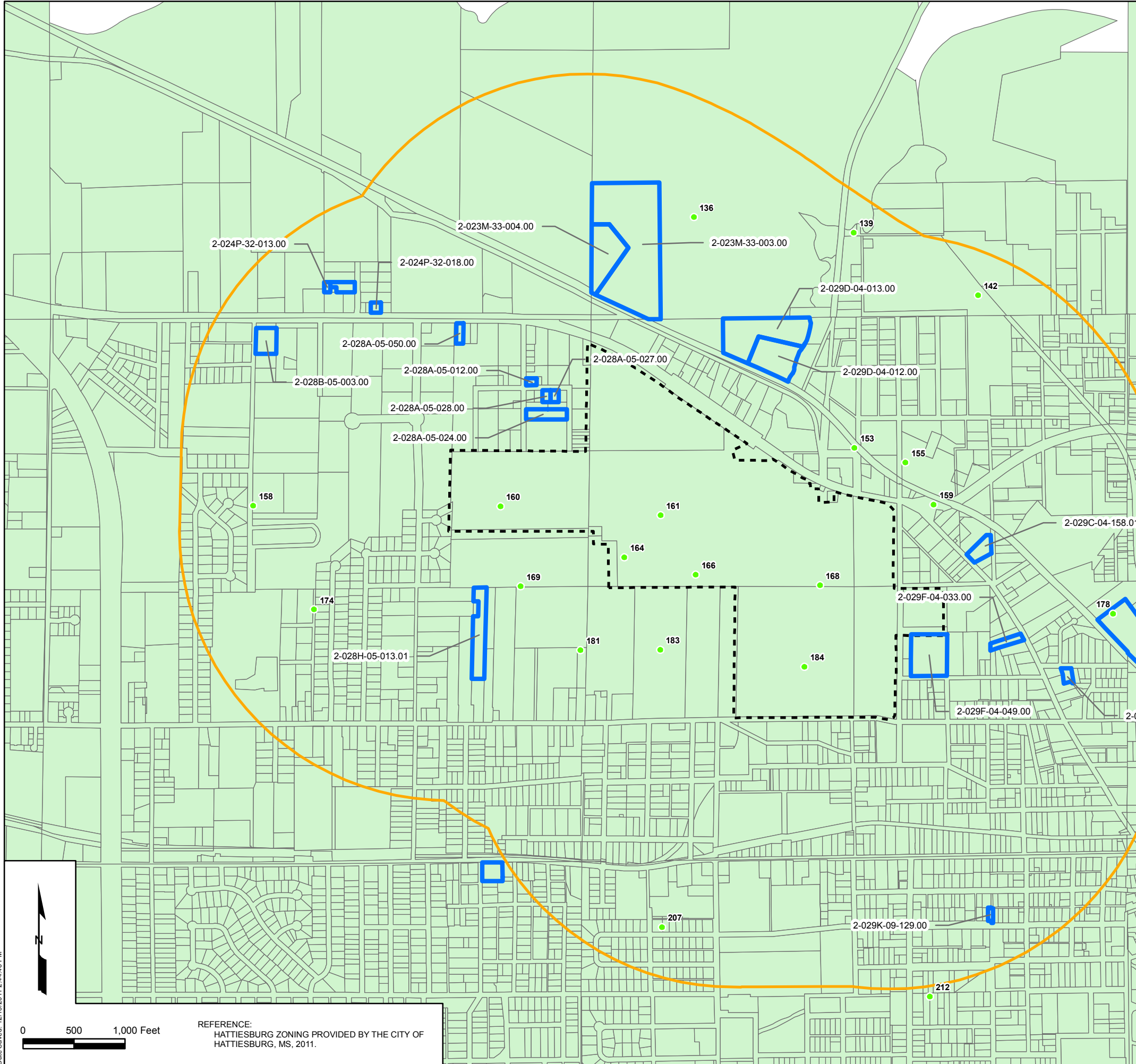


Decision Flow Chart for Drinking Water and Groundwater (Offsite)



Notes:

- (a) Constituent list should be focused to site-related chemicals.
- (b) Any monitor well or recovery well identified within the 0.5 mile radius will not be sampled.



RETURNED POSTCARD DATA	
PARCEL	OWNER
2-023M-33-003.00	
2-023M-33-004.00	
2-024P-32-013.00	
2-024P-32-018.00	
2-028A-05-012.00	
2-028A-05-024.00	
2-028A-05-027.00	
2-028A-05-028.00	
2-028A-05-050.00	
2-028B-05-003.00	
2-028H-05-013.01	
2-029B-03-196.00	
2-029C-04-158.01	
2-029D-04-012.00	
2-029D-04-013.00	
2-029F-04-033.00	
2-029F-04-049.00	
2-029F-04-294.00	
2-029G-03-302.00	
2-029G-03-313.00	
2-029K-09-129.00	



WELLS IDENTIFIED BY QUESTIONNAIRE RESPONSE

Revised Phase I Sampling and Analysis Work Plan

HERCULES INCORPORATED
613 W. 7th Street
Hattiesburg, Mississippi

10352 PLAZA AMERICANA DRIVE
BATON ROUGE, LA 70816
TEL: 225-292-1004
FAX: 225-218-9677
WWW.ARCADIS-US.COM

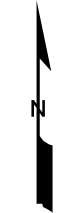
- Legend**
- 178 EDR Database Well Location
 - Parcel with Well(s) as of 09/12/2011
 - Approximate Hercules Property
 - Half Mile Radius

Note:
Positive identification through field verification has not been completed.

EDR DATA		
MAP ID	WELL DEPTH	OWNER NAME
136	94	
139	0	
142	91	
153	422	
155	265	
158	138	
159	105	
160	654	
161	668	
164	641	
166	640	
168	466	
169	650	
173	0	
174	350	
175	325	
178	353	
181	501	
183	687	
184	687	
207	576	
212	0	

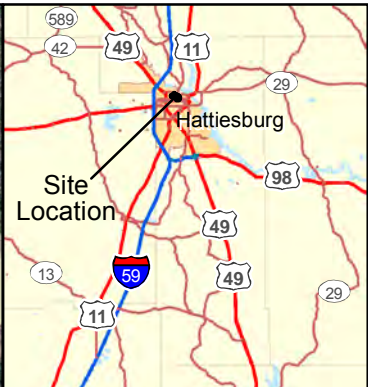
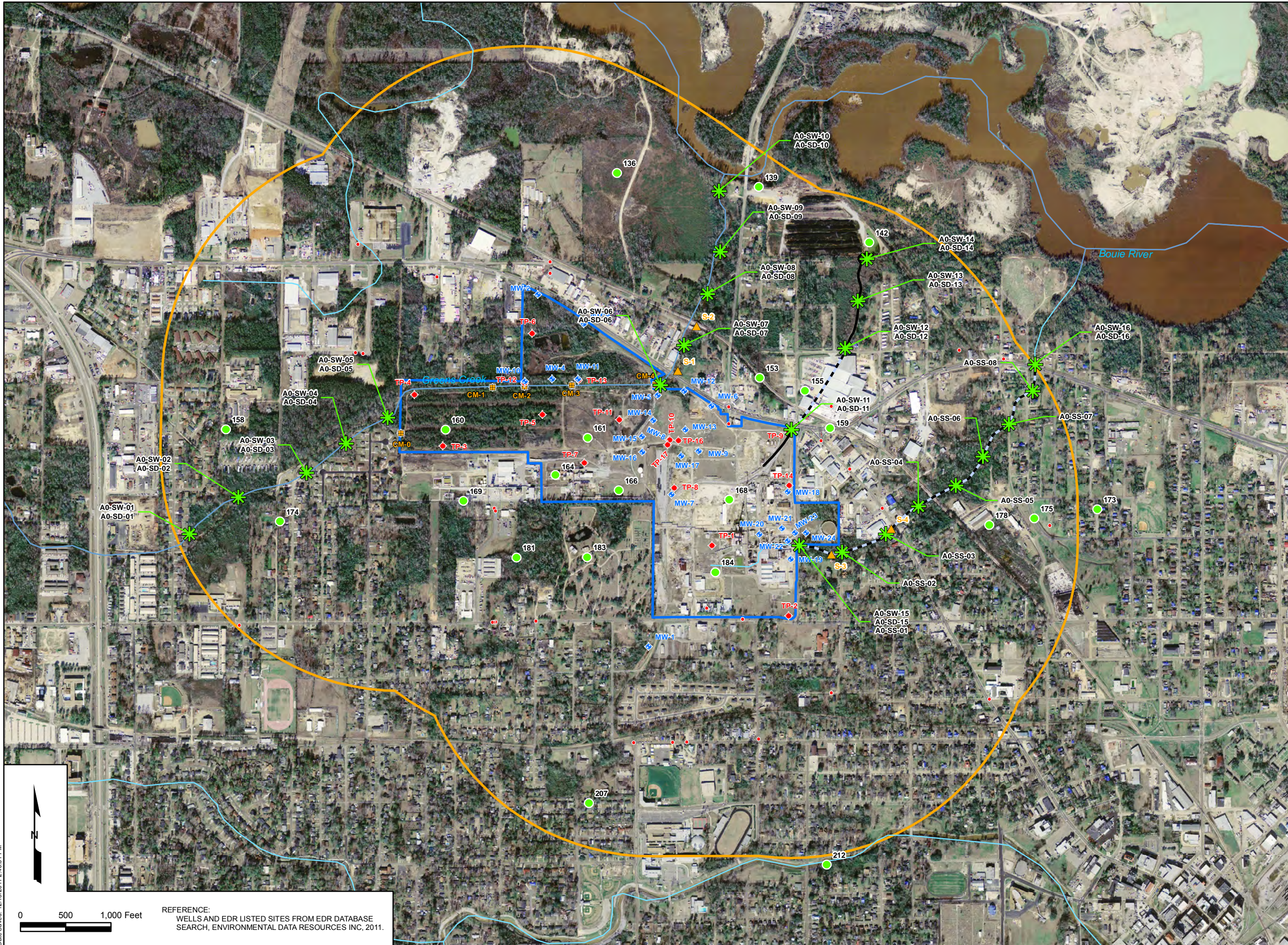
PROJECT MANAGER: JE	CHECKED BY: CD
DRAWING FILE:	GIS FILE:
DRAWING BY: JEC	DATE: 11/09/2011
PROJECT NUMBER: LA002999.0006	FIGURE NUMBER: 11

Date Saved: 12/13/2011 2:44:46 PM



0 500 1,000 Feet

REFERENCE:
HATTIESBURG ZONING PROVIDED BY THE CITY OF
HATTIESBURG, MS. 2011.



PROPOSED SAMPLE LOCATION MAP

Revised Phase I Sampling and Analysis Work Plan

HERCULES INCORPORATED
613 W. 7th Street
Hattiesburg, Mississippi

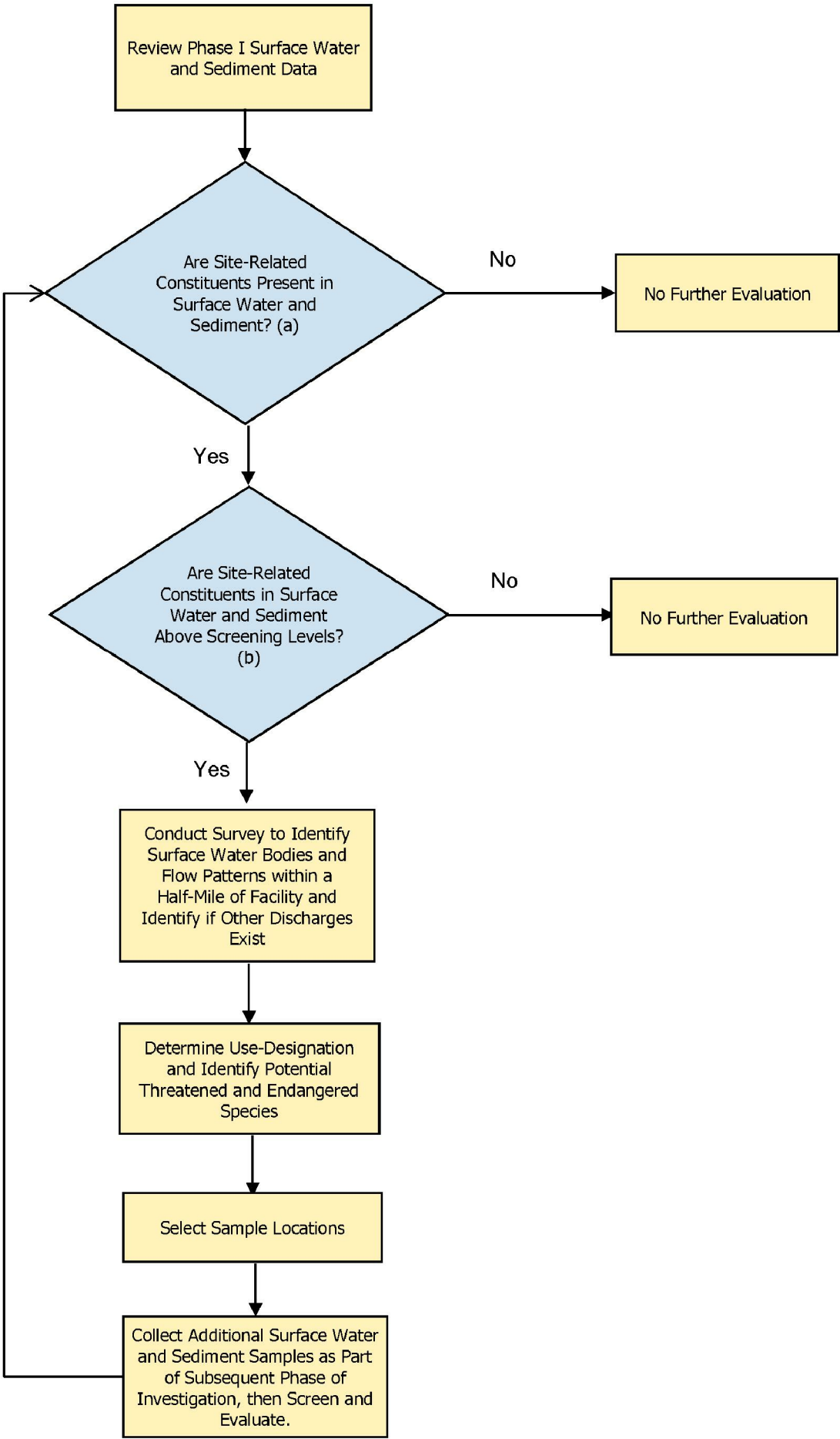
ARCADIS
10352 PLAZA AMERICANA DRIVE
BATON ROUGE, LA 70816
TEL: 225-292-1004
FAX: 225-218-9677
WWW.ARCADIS-US.COM

Legend

- MDEQ 2004 Surface Water/Soil Sample Location
 - Proposed Surface Water/Sediment/Soil Sample Location
 - EDR Identified Potential Environmental Site
 - Wells
 - Creek Media Sample Location
 - Monitor Well Location
 - Piezometer Location
 - Culverted Ditch
 - Open Ditch
 - Approximate Hercules Property
 - Half Mile Radius
- A0-SW-01 = Surface Water Sample Location
A0-SD-01 = Sediment Sample Location
A0-SS-01 = Surface Soil Sample Location

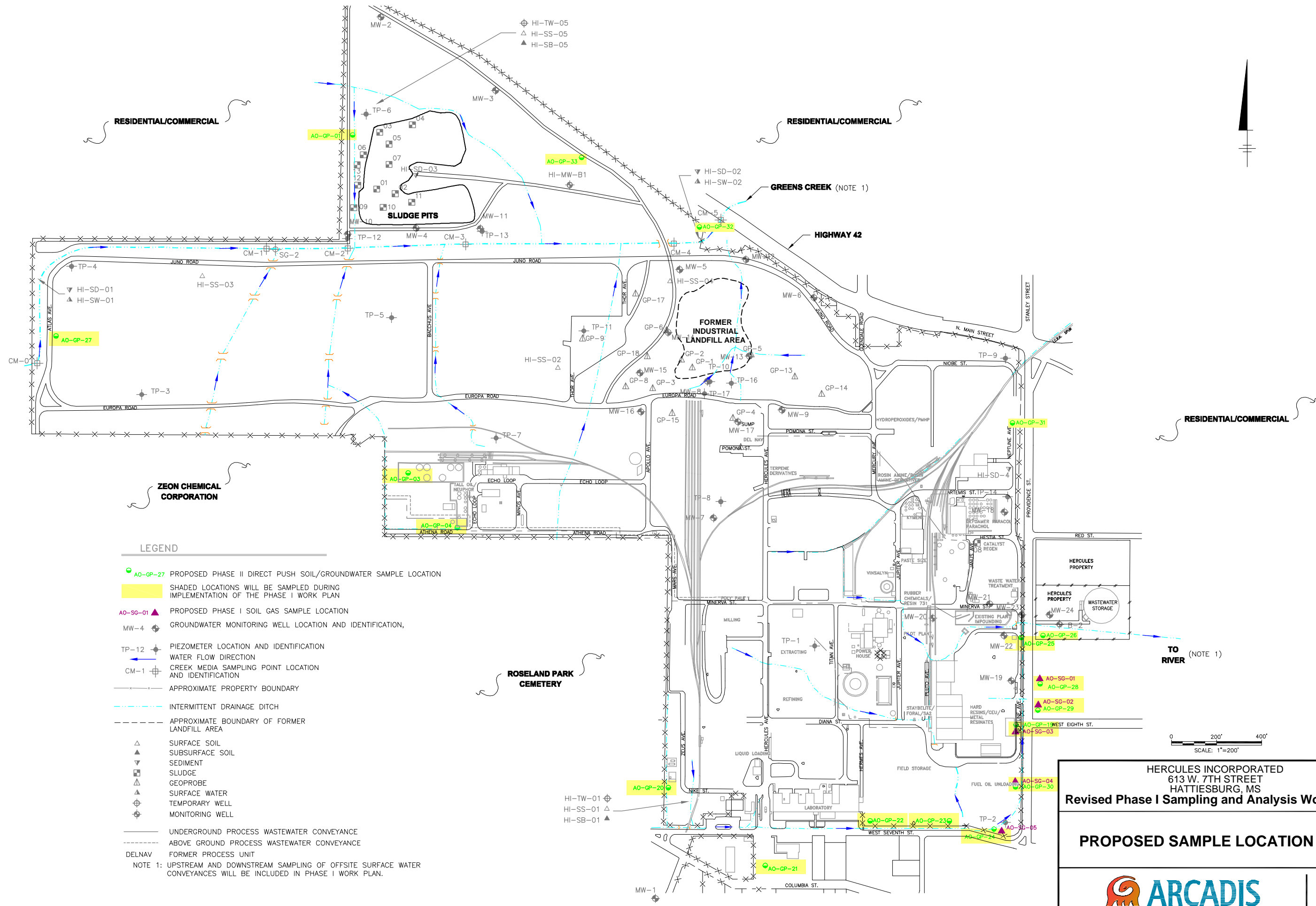
PROJECT MANAGER: JE	CHECKED BY: CD
DRAWING FILE:	GIS FILE:
DRAWING BY: JEC	DATE: 06/28/2011
PROJECT NUMBER: LA002999.0006	FIGURE NUMBER: 12

Decision Flow Chart for Surface Water and Sediment for Areas Outside the Half-Mile Radius

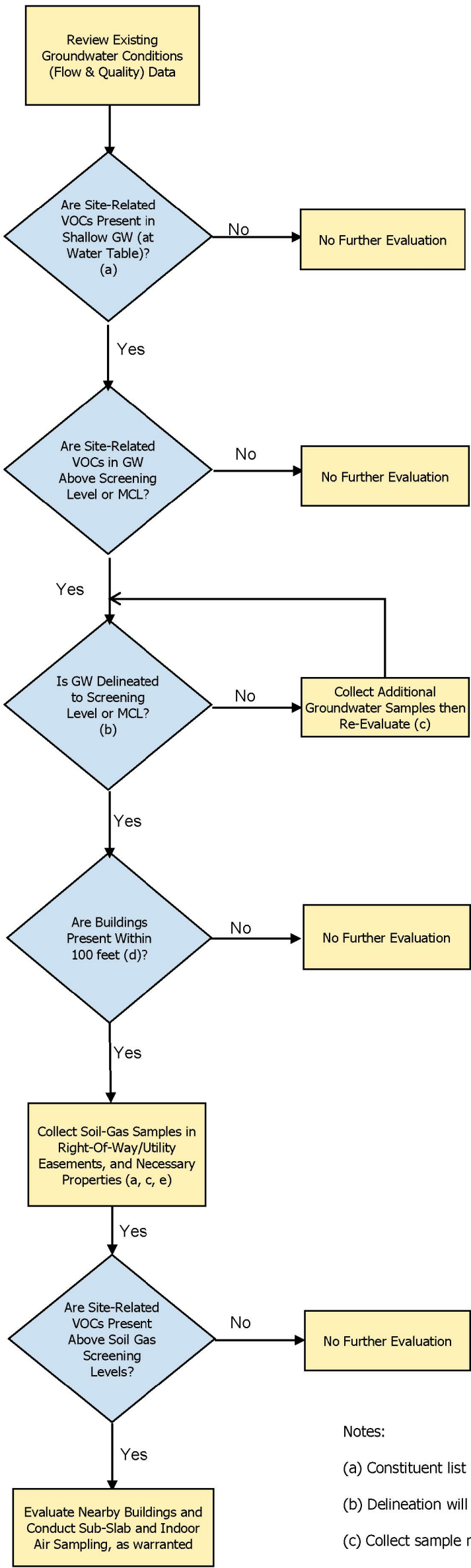


Notes:

- (a) Constituent list will be approved by EPA and MDEQ prior to sampling and will be focused to site-related chemicals.
- (b) Human health and ecological screening levels.



Decision Flow Chart for Soil Gas and Vapor Intrusion Within and Beyond Half-Mile Radius of Site



Notes:

- (a) Constituent list focused on site-related chemicals as approved by USEPA and MEDQ.
- (b) Delineation will include evaluation of utility corridors as they may effect COC migration.
- (c) Collect sample near the water table.
- (d) Within 100 feet of delineated screening level line.
- (e) Collect samples within half-mile radius of Site in areas of potential concern (right of ways, easements, other properties, etc.).