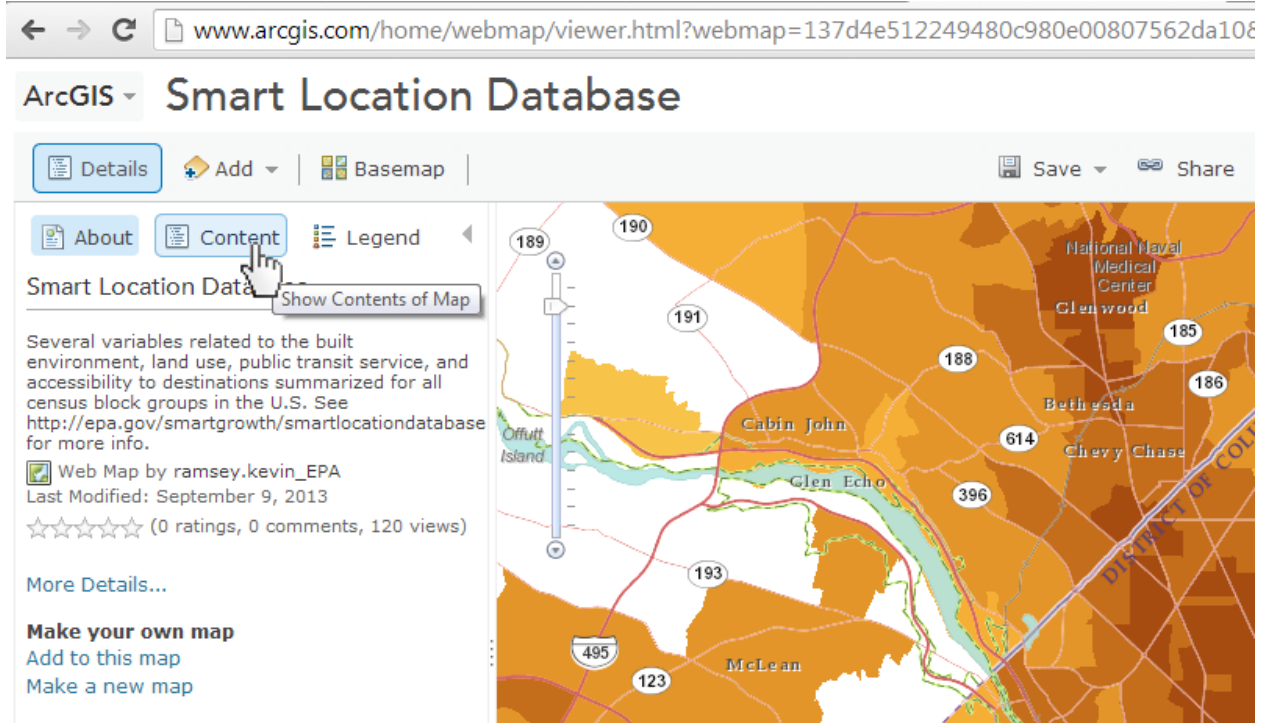


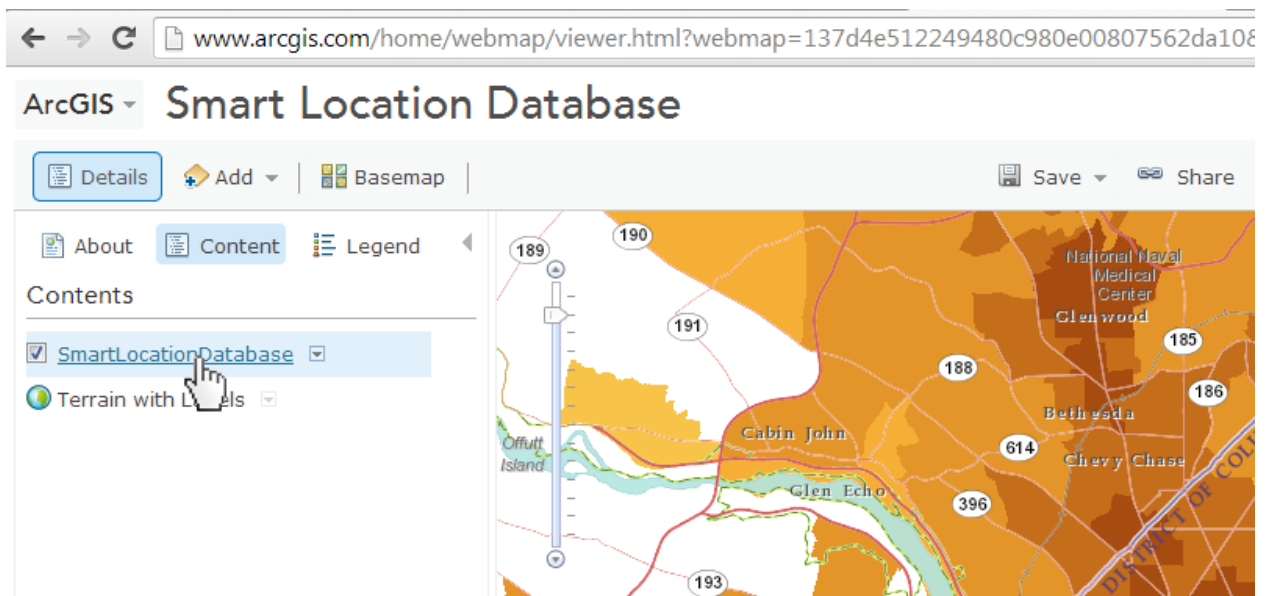
## Tips for using the Smart Location Database mapping tool

The ArcGIS.com interface for browsing Smart Location Database variables can be a little confusing at first. Here are some tips for navigating the data.

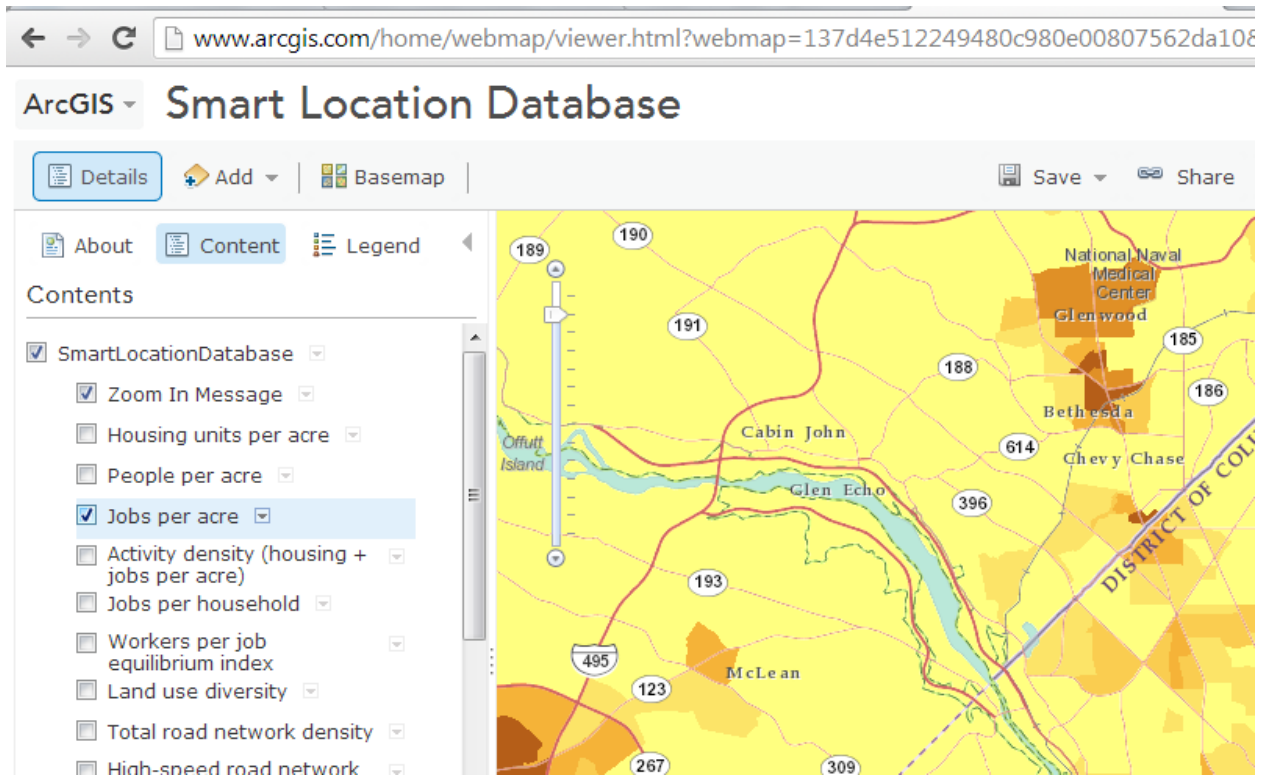
The default screen when you arrive at the interactive mapping tool should look like the screenshot below. Click on the “content” button to see a list of variables available for viewing.



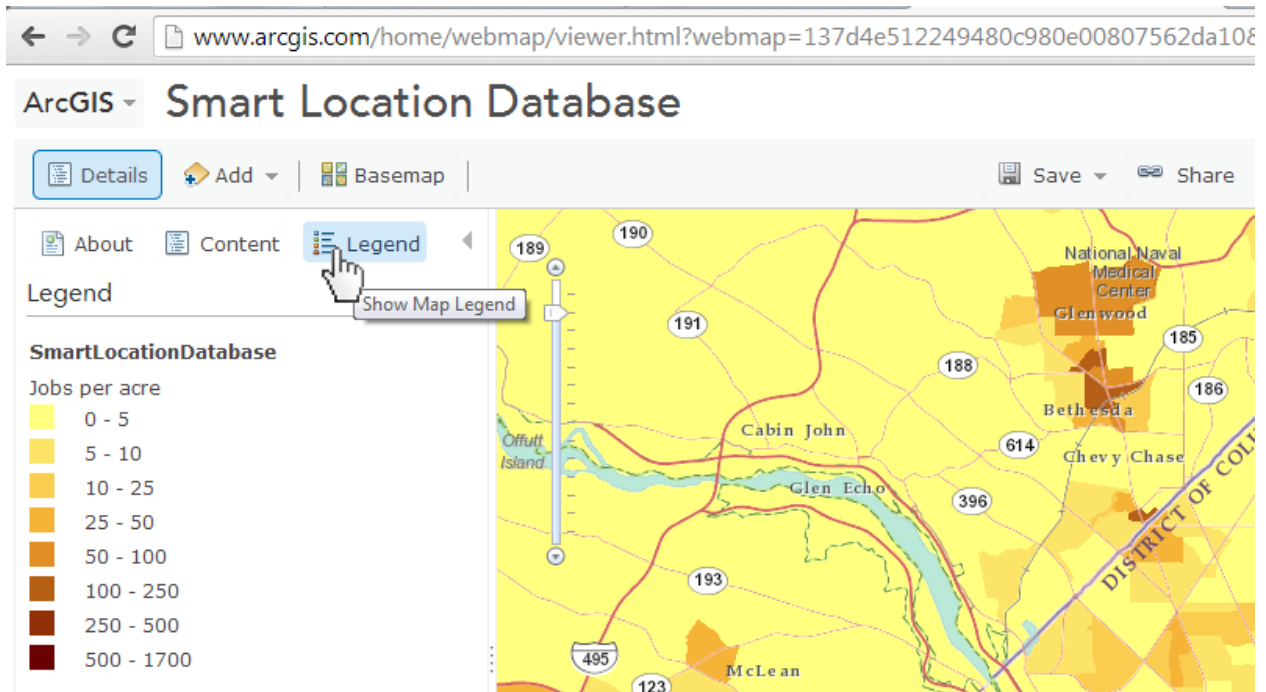
After you click “content” a list of layers will appear. Click on “SmartLocationDatabase” to expand the list of variables available for viewing.



A list of variables will appear below. Click the checkbox next to the variable of interest. If more than one variables are checked, only the top one will be viewable. To read a brief description of a particular variable, click on the little button to the left of the variable name and select “description”.



To see a legend for the variable selected, click the “Legend” button.



Click on an area of the map to retrieve the data value for a specific location of interest.

