

# Urban Waters Mapping Tool

Prepared for:

Denver Pilot - Urban Waters Partners Meeting  
August 23, 2012

Presented by Scott Peterson, SAIC for US EPA

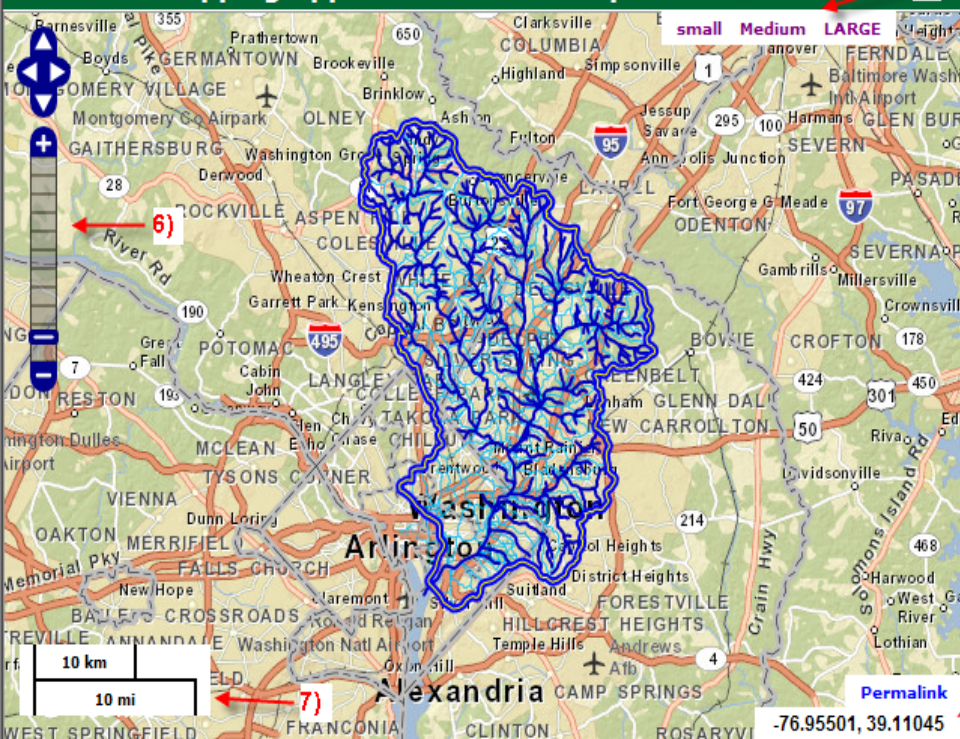
# Origin of the Idea

- **Several Denver Pilot Urban Waters Partners saw a mapping tool and said:**
  - "I want that!"
  - So that organizations working on the South Platte River could be more informed about each other's activities

# Origin of the Idea

- The mapping tool they saw is the **Anacostia Mapping Application Partnership Tool**
  - Developed by USGS
  - Developed for the Anacostia Watershed in Washington DC

## Anacostia Mapping Application Partnership Tool



### Map Layers

- Projects and Work Sites
- Parks and Protected Lands
- Reaches and Boundaries
- Census Data
- USGS National Land Cover Database
- Base Map

Overlay Transparency:

[Accessibility](#) [FOIA](#) [Privacy](#) [Policies and Notices](#)

[U.S. Department of the Interior](#) | [U.S. Geological Survey](#)

URL: <http://lcat.usgs.gov/anacostia>

Page Contact Information: [dstrong@usgs.gov](mailto:dstrong@usgs.gov)

# Anacostia Mapping Tool

## Map Layers

### Projects and Work Sites

- Anacostia Waterfront Initiative (AWI) Projects
  - Stormwater Retrofit Stream Restoration
  - Wetlands Restoration Fish Blockage Removal/Modification
  - Riparian Reforestation, Meadow Creation, Street Trees, and
  - Invasive Management
  - Trash Reduction Parkland Acquisition
- EPA NPDES Dischargers: Major, Minor
- EPA Brownfields
- EPA Toxic Release Inventory
- EPA Sewer Overflow Outfalls

# Anacostia Mapping Tool

## Map Layers

### Projects and Work Sites (cont.)

- USGS Gages  
High-Intensity Water Quality Active Inactive
- USGS Wells  
Water Quality Observation
- USFWS Work Sites  
Env. Contaminants Coastal Program Schoolyard Habitat  
Environmental Stewardship Compensatory Mitigation
- NPS Work Sites
- USGS/NPS Surface Elevation Tables - Marker Horizon

# Anacostia Mapping Tool

## Map Layers

### **Parks and Protected Lands**

- Anacostia Riverwalk
- Other Trails
- Parks: NPS County, Regional/District

# Anacostia Mapping Tool

## Map Layers

### Reaches and Boundaries

- Anacostia Watershed
- Anacostia 303(d) Impaired Waters
- Anacostia Reaches
- Anacostia Subwatersheds
- Counties
- DC Wards



# Anacostia Mapping Tool

## Map Layers

### Census Data

- Population Density
- Percent Vacant
- Per Capita Income
- Median Family Income
- Percent Poverty
- Percent Minority

# Anacostia Mapping Tool

## Map Layers

### **USGS National Land Cover Database**

- **USGS NLCD 2006 Land Cover**
- **USGS NLCD 2006 Impervious Surface**
- **USGS NLCD 2001 Land Cover**
- **USGS NLCD 2001 Impervious Surface**

# Anacostia Mapping Tool

## Map Layers

### Base Map

- The National Map
- The National Map Imagery
- USA Topo Maps
- ESRI Topo
- ESRI Imagery
- ESRI Street

# Mapping Tool for South Platte Watershed

- At US EPA R8's request, US EPA HQ initiated requirements gathering for a South Platte watershed mapping tool

# Mapping Tool

## Requirements Gathering

- An electronic survey was created and Denver Pilot Urban Waters Partners were asked to complete the survey
  - 26 partners provided responses to the survey from which we obtained a number of functionality and map layer requirements

# Mapping Tool Requirements Gathering

- Four (4) webinars were conducted to continue identifying mapping tool needs:
  - 2 focusing on South Platte Headwaters partners
  - 2 on Denver area partners

# Mapping Tool

## Requirements Gathering

- **We have identified:**
  - Basic minimum of functionality for the tool
  - The need to see other organizations' projects
  - Ability to add and update their own projects depicted on the maps

# A National UW Mapping Tool

- US EPA requires that this mapping tool can service groups operating in any part of the country



# Current Plans for an Urban Waters Mapping Tool

- Build a basic mapping tool with the key base map layers
- Estimate the effort of adding spreadsheets and other organization-sourced data to the mapping tool in batch form

# Current Plans for an Urban Waters Mapping Tool

- Build a basic entry page that requires user login in order to map events and projects on a one-by-one basis
- Create an Excel spreadsheet template that allows people to get data into that template format but then to submit to EPA to batch upload to the mapping tool.

# Identify Key Base Map Layer

- We want to take advantage of having you all together for this meeting to move further along and so we have some work for you
- Please work through the handout "Mapping Tool Layers Needed and Sources"
  - Start by supplying the information at the top of the first page (Name, contact info, and organization)

# Identify Key Base Map Layer

- Please work through the handout "Mapping Tool Layers Needed and Sources" (cont.)
  - In the column "Check if Critical", check those map layers you believe are **critical** to a UW Mapping Tool
    - **Bear in mind that not all will be part of the tool due to funding limitations**

# Identify Key Base Map Layer

- Please work through the handout "Mapping Tool Layers Needed and Sources" (cont.)
  - For those layers that you (your organization) possess, please record:
    - Indicate by a check mark if it is a spreadsheet, GIS layer, or Map Service