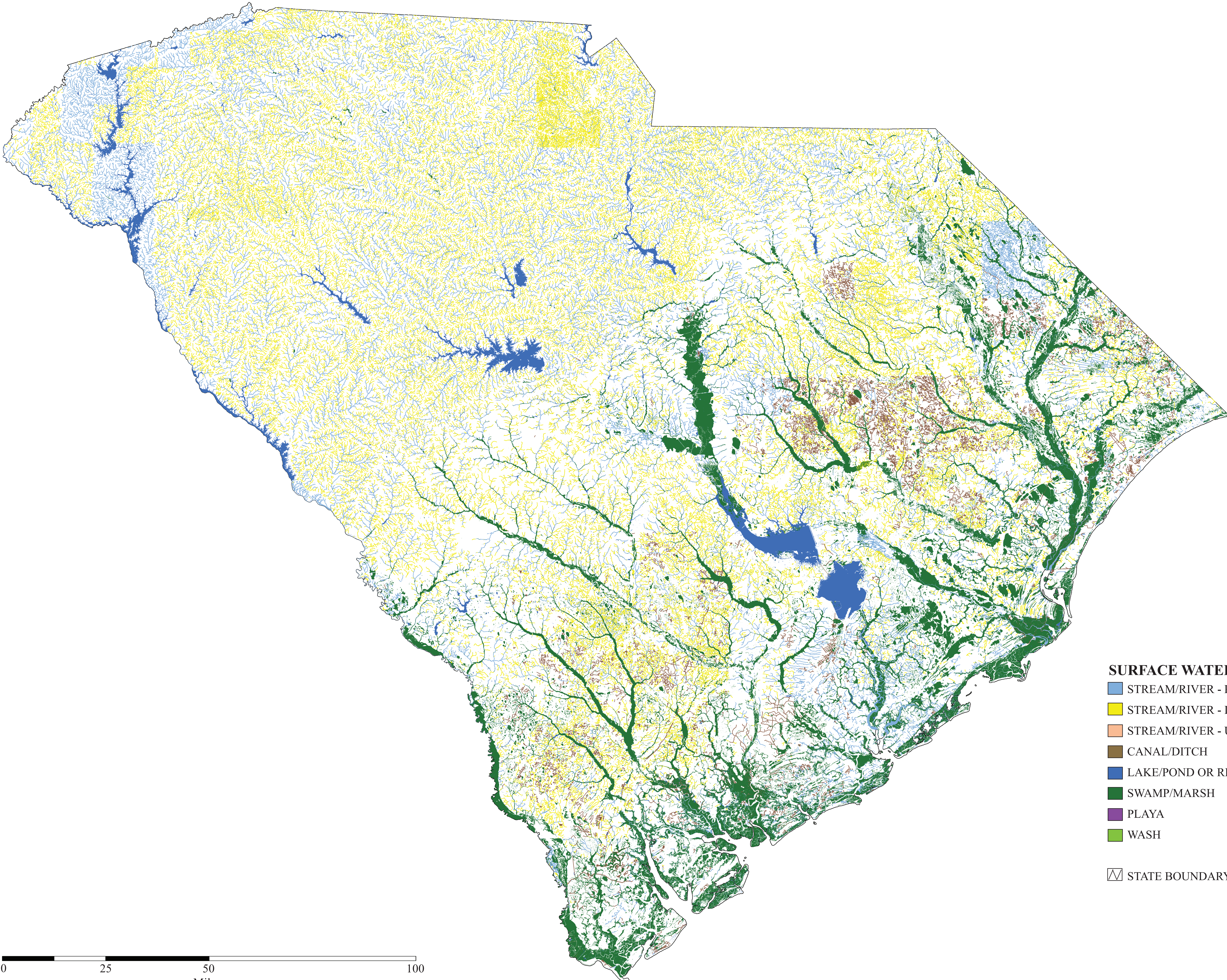


# STREAMS AND WATERBODIES IN SOUTH CAROLINA

The National Hydrography Dataset



## SURFACE WATER FEATURES

- STREAM/RIVER - PERENNIAL
- STREAM/RIVER - INTERMITTENT
- STREAM/RIVER - UNCLASSIFIED
- CANAL/DITCH
- LAKE/POND OR RESERVOIR
- SWAMP/MARSH
- PLAYA
- WASH
- STATE BOUNDARY

This map displays the pattern of different surface water feature types across the state of South Carolina, including perennial, intermittent and ephemeral streams. Perennial streams generally contain water throughout the year, except for periods of extreme drought. Intermittent streams contain water for only part of the year, while ephemeral streams flow only in response to precipitation events. Although the intermittent and ephemeral stream classifications are distinguished from each other in the dataset, many ephemeral streams are included in the “intermittent” category. In addition, some ephemeral streams in the Southwest have been classified as washes. Only recently, and mainly on U.S. Forest Service land, have streams been added to the dataset under the “ephemeral” category. No streams in the state have yet been classified in the ephemeral category (data current as of October 2009). The map highlights the predominance of intermittent and ephemeral streams across the state. Of the 64,296 miles of linear streams in South Carolina, 50 percent (32,042 miles) are intermittent or ephemeral. Ten percent of streams are ditches (6,323 miles), which are not classified by their flow duration in the dataset.

The water features on the map are from the National Hydrography Dataset (NHD) at high resolution (1:24,000 scale or higher). Many smaller waters are not included in the NHD because they could not be detected on the original aerial photos used to create the dataset or were excluded from the maps from which the dataset originates. The majority of perennial and most intermittent streams are captured at this resolution. However, most ephemeral streams are not captured unless they are in the arid west. Additional information on the NHD can be obtained from the NHD website at <https://nhd.usgs.gov>.

This map relies exclusively on USGS data for mapping water resources such as streams and other waterbodies. Due to the resolution of the map, it does not distinguish effectively between land and water and thus makes waters appear more prevalent than is actual. This map does not depict the scope of waters protected under the Clean Water Act or the scope of waters that would be protected under the Army/EPA proposed rule. This map has not been used for any regulatory purpose.

Prepared by INDUS Corporation under contract with  
U.S. Environmental Protection Agency  
Office of Water – Washington, DC  
October 2013

