

Community Revitalization

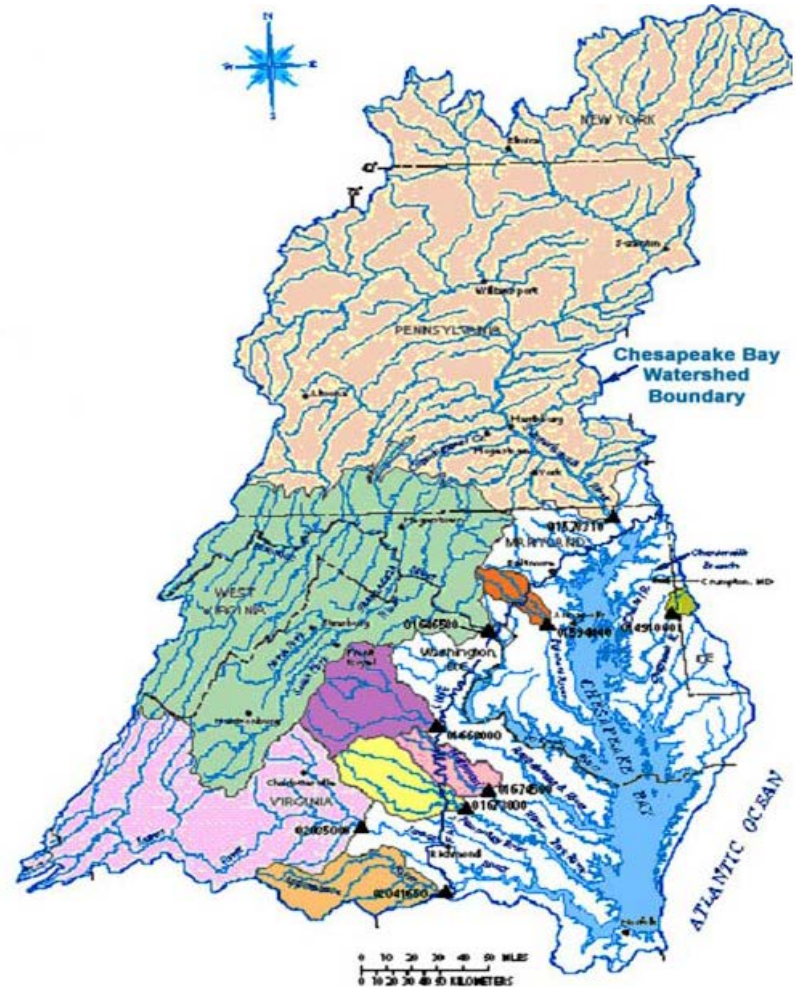
**From Vacant and Abandoned Lots
to
Green Infrastructure**

Successfully revitalizing vacant land and lots utilizing green infrastructure to restore and provide access to natural resources

- Watershed and Pipeshed Approaches
- Sub-watershed Organizing
- Floods, Woods and Bottom Up Strategies
- Building Off Assets and Tackling Challenges

Chesapeake Watersheds

- » Threading through the Chesapeake watershed are more than 100,000 streams and rivers — called tributaries— that eventually flow into the Bay.
- » Each of these tributaries has its own watershed, which are sometimes referred to as "sub-watersheds".



The Watershed Protection & Restoration Act

- Passed in April 2012 House of Delegates Bill 987, now chapter 151 of the Annotated Code of Maryland, requiring Maryland's 10 Phase 1 MS4 communities to establish a Watershed Protection and Restoration Program.
- Baltimore and Maryland's nine most populated county were required to adopt and implement a Law/Ordinance to establish this program by July 1, 2013.
- The Watershed Protection and Restoration Program shall include:
 - A stormwater Remediation Fee
 - A local Watershed Protection and Restoration Fund



Common Stormwater Pollutants and Their Sources

	Vehicle Exhaust	Tire & Vehicle Parts Wear	Vehicle oil, Grease, & Fuel	Road surfaces and de-icing salts	Household, Lawn, and Garden Chemicals
Lead	X	X	X		X
Zinc		X	X	X	X
Copper		X	X		
Cadmium		X			X
Chromium		X			
Nickel		X	X	X	
Manganese		X			
Mercury	X				X
Iron			X		
Cyanide					X
Nitrogen and Phosphorus	X				X

Baltimore City Breakdown

Legislation

- Bill 12-0155
- Effective: June 27, 2013
- **E.R.U.** / 1,050 SF
- **Fee/E.R.U.** / \$15/ ERU/ quarter
- **Fee/Impervious Acre** | \$2,490/acre/year



Relief/Credits

- (1) Fee capped at 20% of state and city real property taxes.
- (2) NPDES permit credit of 55%
- (3) Direct discharge into Harbor Credit of 30%
- (4) Vacant lot with less than 50 sf. of impervious surface: 45% credit.

Definition of Impervious

- Any surface that does not allow storm water to infiltrate into the ground.

Billing and Appeals

- Fee billed quarterly as line item on water bill;
- First bills sent: October 1, 2013;
- Appeal deadline: within 30 days of receiving the bill.

Prince George's County Breakdown



Legislation

- Bill CB-45-2013; CR-59-2013
- Passed 7/31/13
- ***E.R.U.*** | 2,465 SF
- ***Fee/E.R.U.*** | Base Rate - \$20.90/ ESU/ year; & Flat Fee of \$20.58 also added
- ***Fee/Impervious Acre*** | \$390/acre/year

Relief/Credits

- Bill offers credits for participation in various approved stormwater management practices.

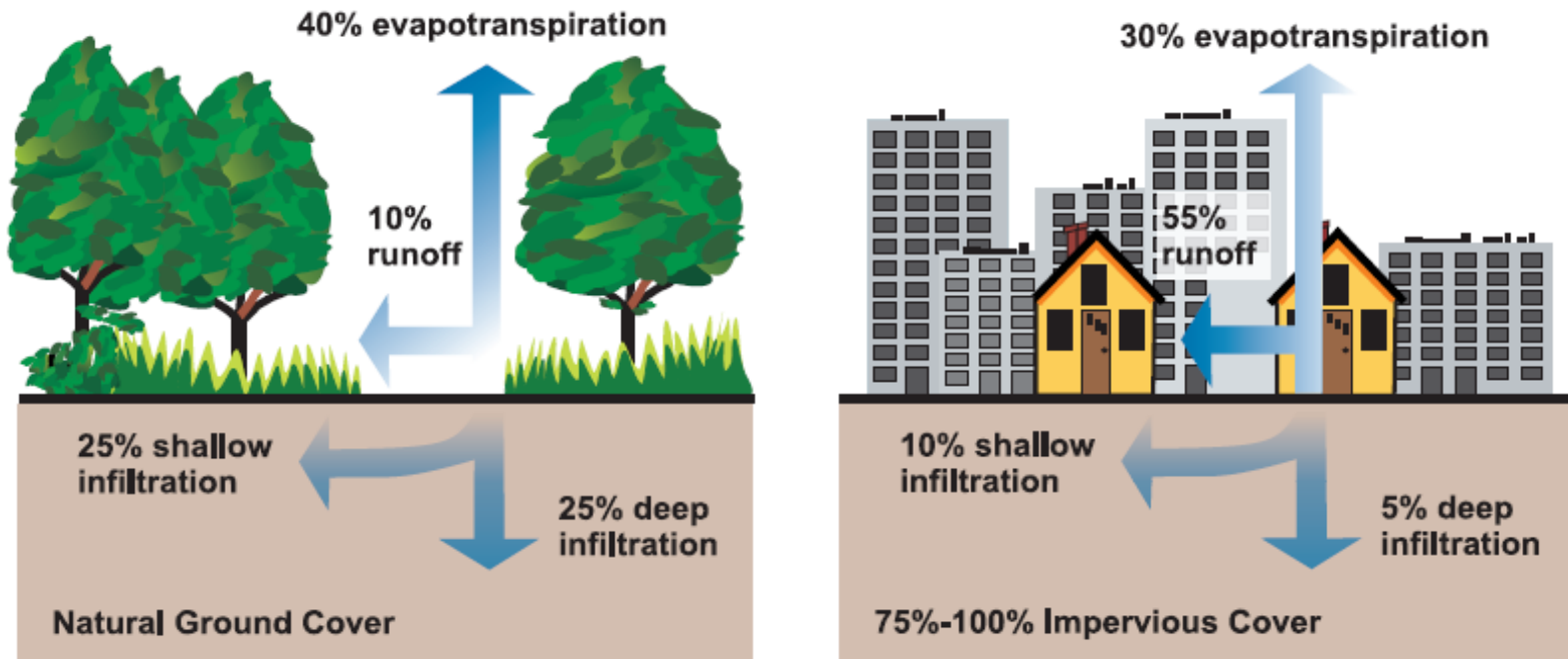
Definition of Impervious

- N/A

Billing and Appeals

- Fee billed annually as line item on property bill;
- First bills sent August 1, 2013;
- Appeal deadline: Sept. 30, 2013

Relationship between impervious cover and surface runoff



- Impervious cover in a watershed increases surface runoff.
- As little as 10 percent impervious cover in a watershed can result in stream degradation.

Expanding Economic Opportunity
And
Revitalizing Neighborhoods
(without displacing existing long-time
residents)

Transportation Infrastructure

- Repair and improve existing streets and highways – cost of failing to do so
- Stop building sprawl-inducing new highways
- Create mass transit corridors that promote higher density mixed use
- Federal State and Local Policy Components
- Improving and Promoting Mass Transit

Land Use

- Inclusionary Zoning
- Mixed Use – retail, office, residential
- Creating Walkable Urban Communities
- Industrial Zones with Residential
- Engaging Residents in Planning

Anti-Community Market Forces

- Disinvestment Spirals
 - Demographic shifts
 - Flight from Struggling Schools
- Money Flows to Money
 - Resources to attract funding
 - Local Stakeholders with assets to invest
 - Developers Seek Money – Spend Money to Get money

Environmental and Economic Justice Interdisciplinary Approaches

- Community Reinvestment Act
- Reinvestment in Public Education
- Preventive Health Care
- Mixed Income Housing Strategies
- Preventive Public Safety
- Sustainable Agriculture and Foodsheds
- Sustainable and Leadership Development

Clean Water Action

Andrew Fellows

Chesapeake Regional Director

1444 Eye Street, NW, Suite 400

Washington, DC 20005

afellows@cleanwater.org

202-895-0420, x102

Questions and Comments on

- Winning Victories
- Building Capacity of Organizations
 - Developing Leadership
- Altering the Relations of Power