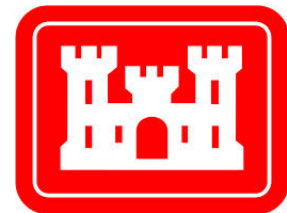




# Lessons from Ambassadors: New Orleans/Lake Pontchartrain

Urban Waters National Training Workshop  
December 2, 2014

# Matrix Management!!



# New Orleans/Lake Pontchartrain Urban Waters Focus Areas



Environmental  
Education



Greenway  
Revitalization



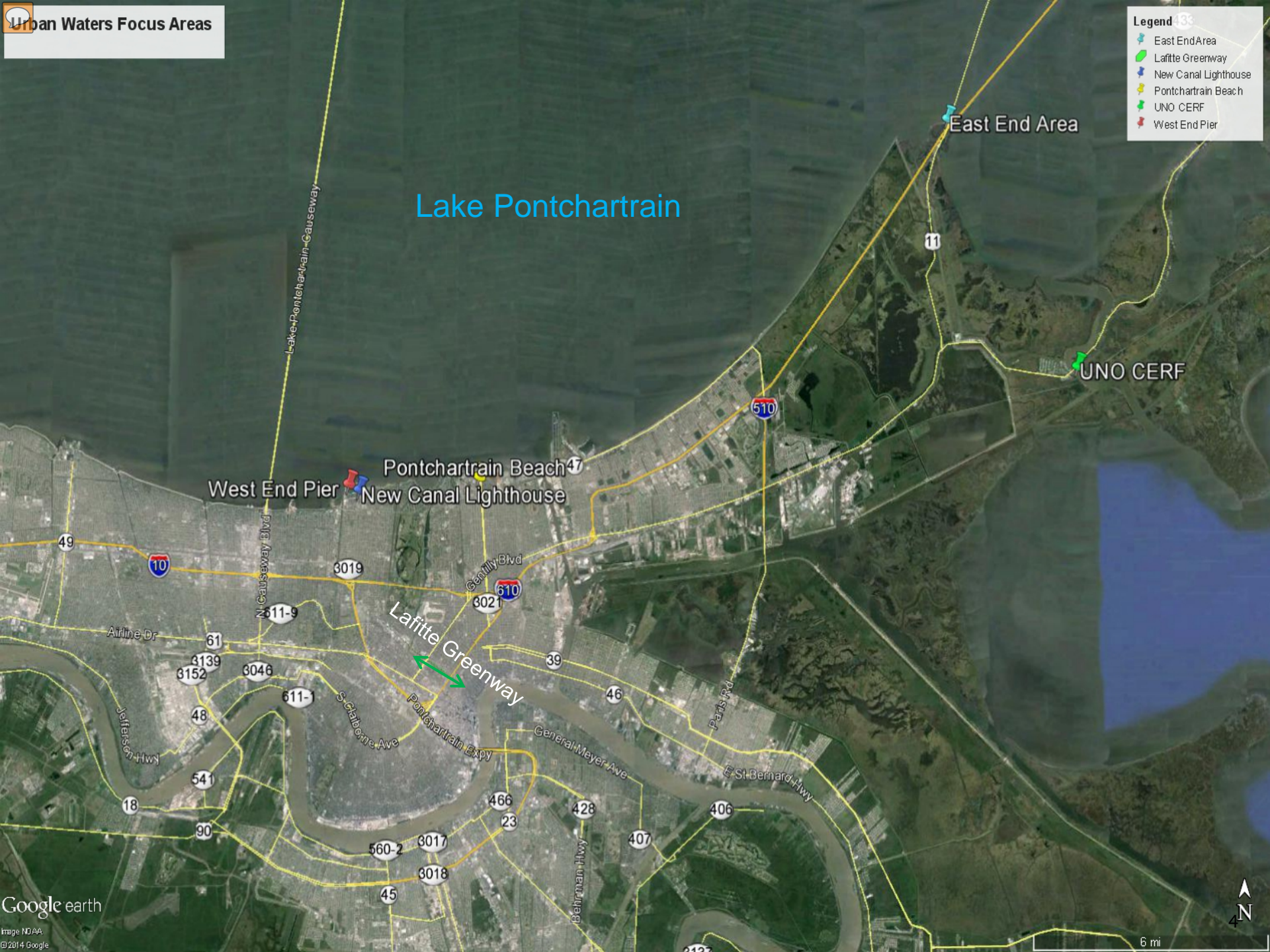
Facilities  
Reconstruction



Enhanced  
Access



- Legend
- East End Area
  - Lafitte Greenway
  - New Canal Lighthouse
  - Pontchartrain Beach
  - UNO CERF
  - West End Pier





# What's Working Well?

- ▶ Cross-program collaboration (EPA GMPO, ORD, NPS, USFWS, USACE, NRCS, FEMA, HUD)
- ▶ Collaboration between local govt and Feds/state
- ▶ Collaboration between local govt and NGOs
- ▶ Collaboration across NGOs

“Collective Impact”

# East End Area (Fed to Local)



MK14-610

AGREEMENT NO. 40181EK008

MEMORANDUM OF UNDERSTANDING  
between

CITY OF NEW ORLEANS, LOUISIANA  
and

U. S. DEPARTMENT OF THE INTERIOR  
FISH AND WILDLIFE SERVICE

## I. Background:

This Memorandum of Understanding ("MOU") is intended to facilitate planning activities that will enhance public use and recreation opportunities desired by the U.S. Fish and Wildlife Service, Region 4, Atlanta, Georgia, (the "Service") and the City of New Orleans (the "City").

The Service owns lands in Orleans Parish that are managed as Bayou Sauvage National Wildlife Refuge (the "Refuge"), which was established in 1986 for multiple purposes under the Emergency Wetlands Resources Act of 1986 (Pub.L. 99-645 § 502; 16 U.S.C. 668dd note). One of the Refuge's purposes is to "provide opportunities for fish and wildlife oriented public uses and recreation in an urban setting. *Id.* at §§ 502(a)(7).

This MOU aligns with the Urban Waters Program goals, as part of a presidential initiative, by enhancing access to the Refuge and Lake Pontchartrain within the City limits. The U.S. Department of the Interior ("DOI") is also a signatory of the Federal Partnership implementing the program. The City and the Service have an interest in enhancing compatible public use and recreation opportunities on the Refuge for visitors and local area residents.

## II. Authority:

This MOU is entered into under the authority of the Fish and Wildlife Act of August 8, 1956 (70 Stat. 1119), as amended, and the Fish and Wildlife Coordination Act of 1934 (16 U.S.C. § 761).

Under Article 7, Section 14(C) of the Louisiana Constitution of 1974, and related statutes, and Section 9-314 of the Home Rule Charter of the City, the City may enter into cooperative endeavors with the State of Louisiana, its political subdivisions and corporations, the United States and its agencies, and any public or private corporation, association, or individual with regard to cooperative financing and other economic development activities, the procurement and development of immovable property, joint planning and implementation of public works, the joint use of facilities, joint research

# New Canal Lighthouse (Fed to NGO)



Credit NPS (Stacye Palmer-McBride)

# UNO CERF (NGO/Academic to NGO)







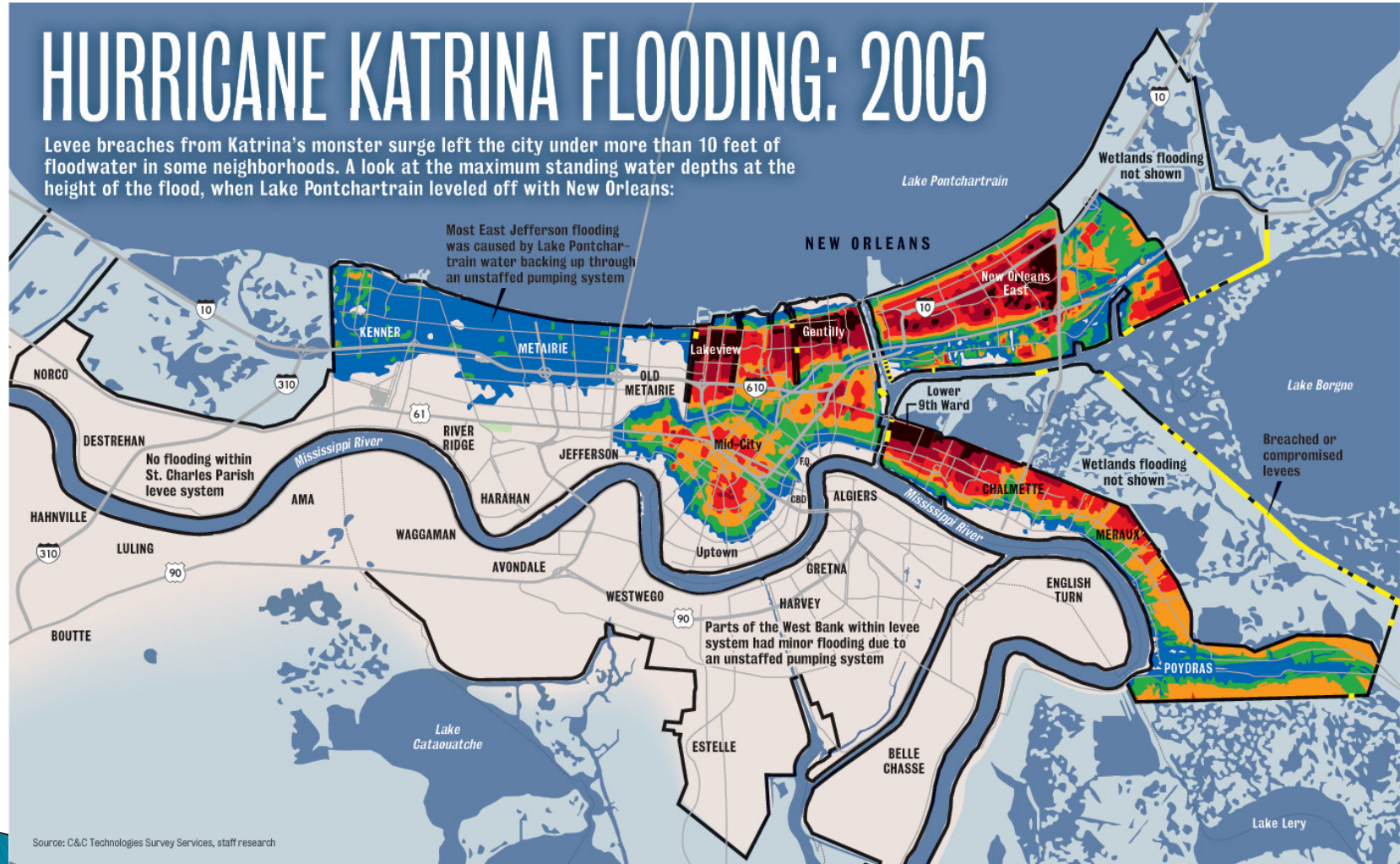
# Why is it working?

# It has to!!

# Parallel, Bigger Picture(s)

## HURRICANE KATRINA FLOODING: 2005

Levee breaches from Katrina's monster surge left the city under more than 10 feet of floodwater in some neighborhoods. A look at the maximum standing water depths at the height of the flood, when Lake Pontchartrain leveled off with New Orleans:



Source: C&C Technologies Survey Services, staff research

### APPROXIMATE STANDING FLOODWATER DEPTHS

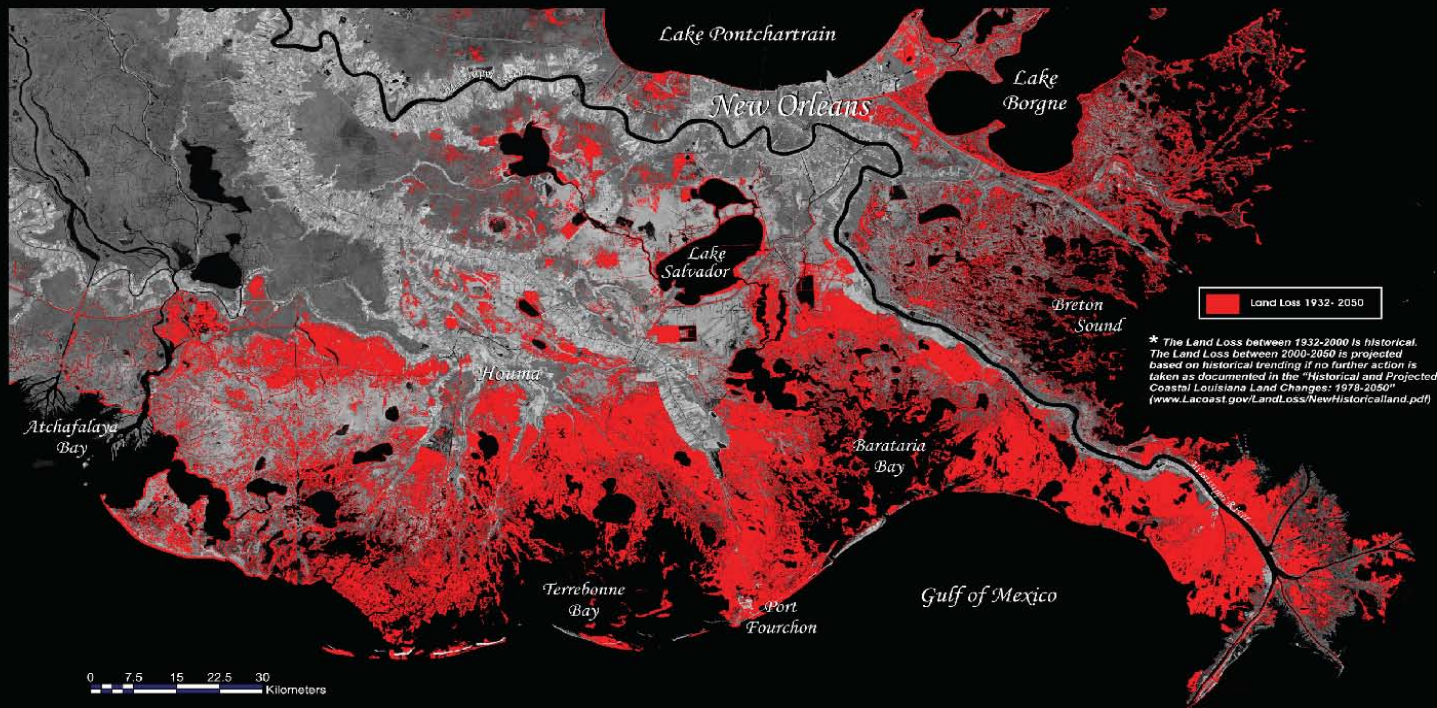


# USACE HSDRRS



# Southeast Louisiana Land Loss

*\*Historical and Projected Land Loss in the Deltaic Plain*



*\* The Land Loss between 1932-2000 is historical. The Land Loss between 2000-2050 is projected based on historical trending. If no further action is taken as documented in the "Historical and Projected Coastal Louisiana Land Changes: 1978-2050" ([www.LaCoast.gov/LandLoss/NewHistoricalLand.pdf](http://www.LaCoast.gov/LandLoss/NewHistoricalLand.pdf))*

Coastal Louisiana has lost an average of 34 square miles of land, primarily marsh, per year for the last 50 years. From 1932 to 2000, coastal Louisiana lost 1,900 square miles of land, roughly an area the size of the state of Delaware. If nothing more is done to stop this land loss, Louisiana could potentially lose approximately 700 additional square miles of land, or an area about equal to the size of the greater Washington D.C.- Baltimore area, in the next 50 years.



*For more information about the land loss analysis or to see an animated time series of wetland change, visit [www.LaCoast.gov/LandLoss](http://www.LaCoast.gov/LandLoss)*

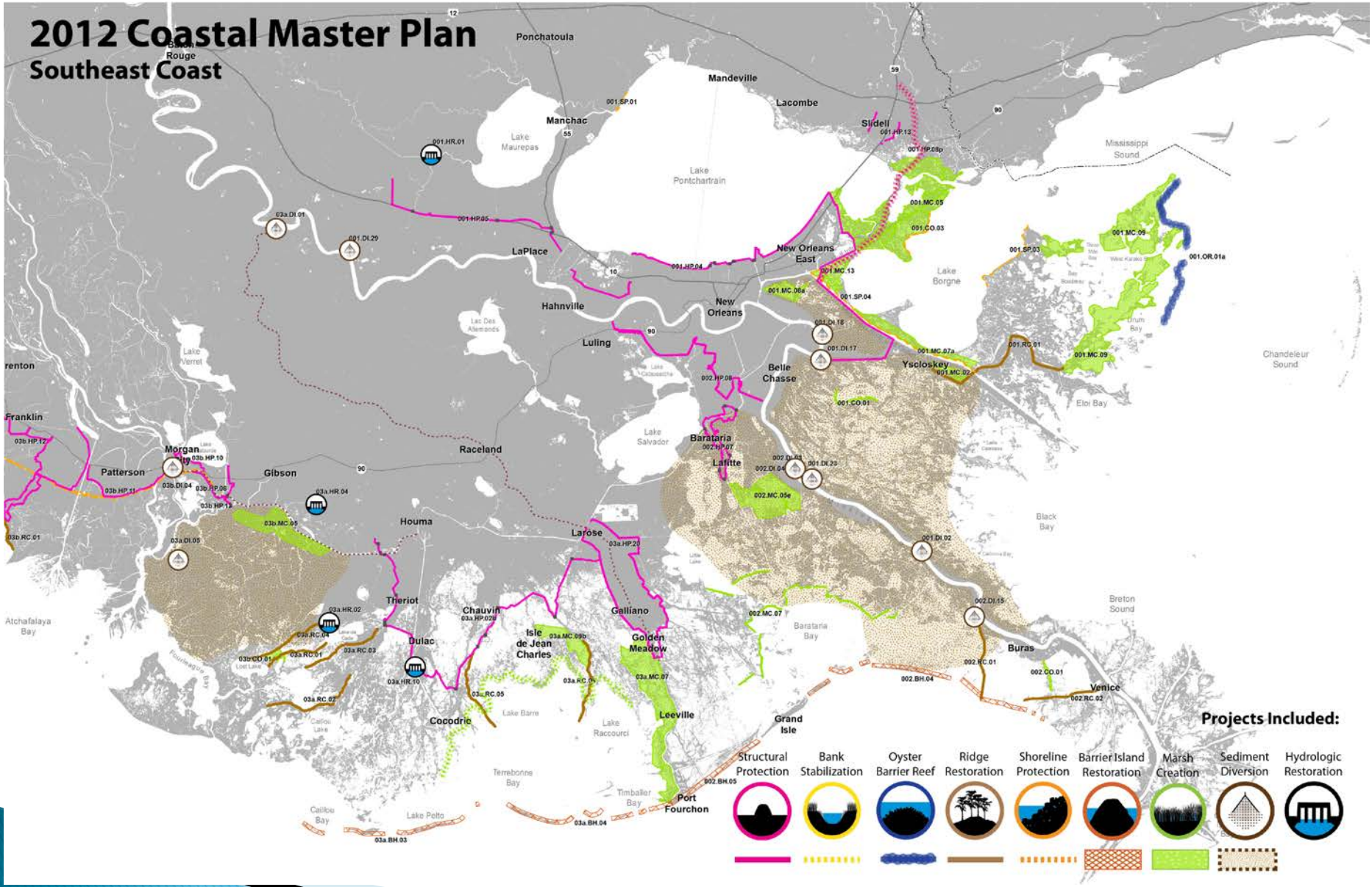
**Data Sources:**  
 1932-1956 Land Change Analysis  
 U.S. Army Corps of Engineers, New Orleans  
 1956-1990 Land Change Analysis  
 1978-2050 Land Change Analysis  
 U.S. Department of the Interior  
 U.S. Geological Survey  
 National Wetlands Research Center  
 Lafayette, LA  
**Prepared by:**  
 U.S. Department of the Interior  
 U.S. Geological Survey  
 National Wetlands Research Center  
 Lafayette, LA



Map ID: USGS-NWRC 2005-16-001  
 Map Date: December 6, 2004

# 2012 Coastal Master Plan

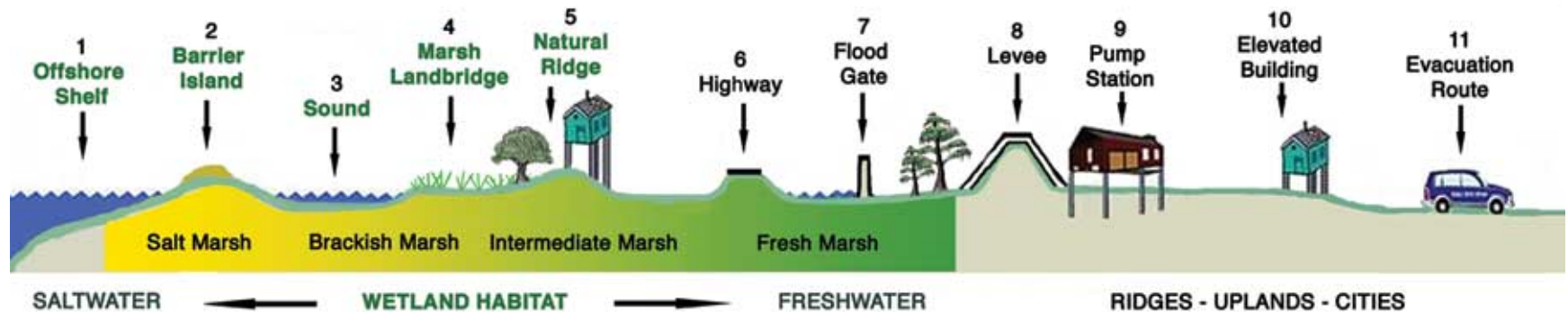
## Southeast Coast



**Projects Included:**

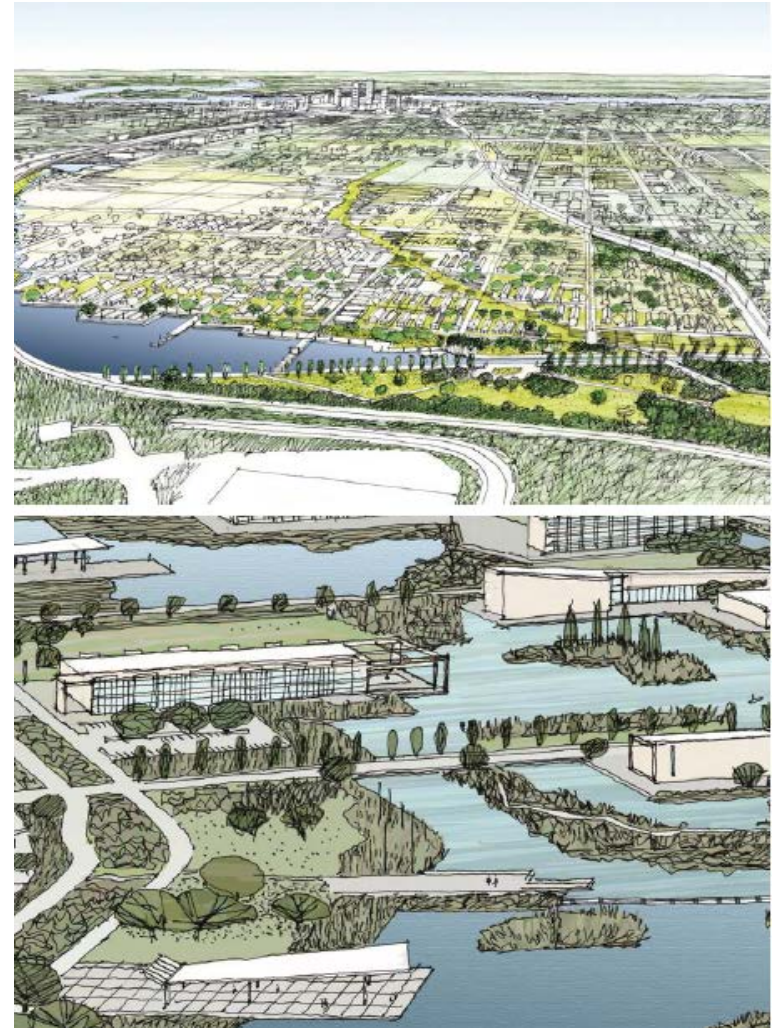
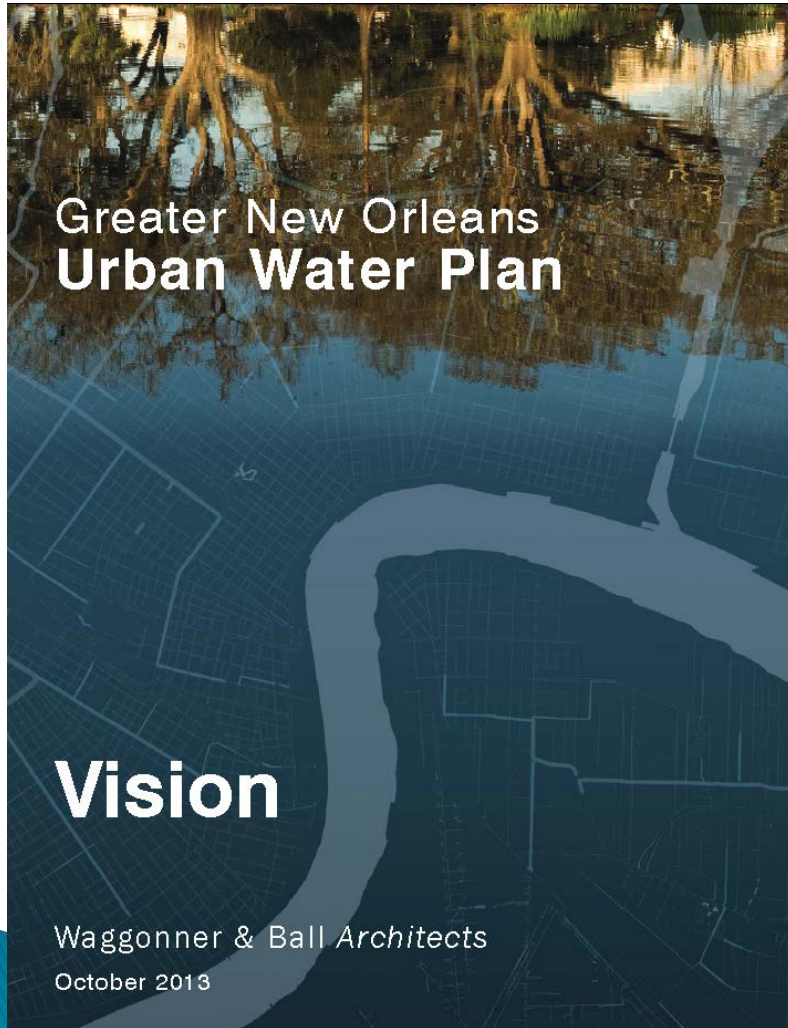
Structural Protection	Bank Stabilization	Oyster Barrier Reef	Ridge Restoration	Shoreline Protection	Barrier Island Restoration	Marsh Creation	Sediment Diversion	Hydrologic Restoration

# Multiple Lines of Defense

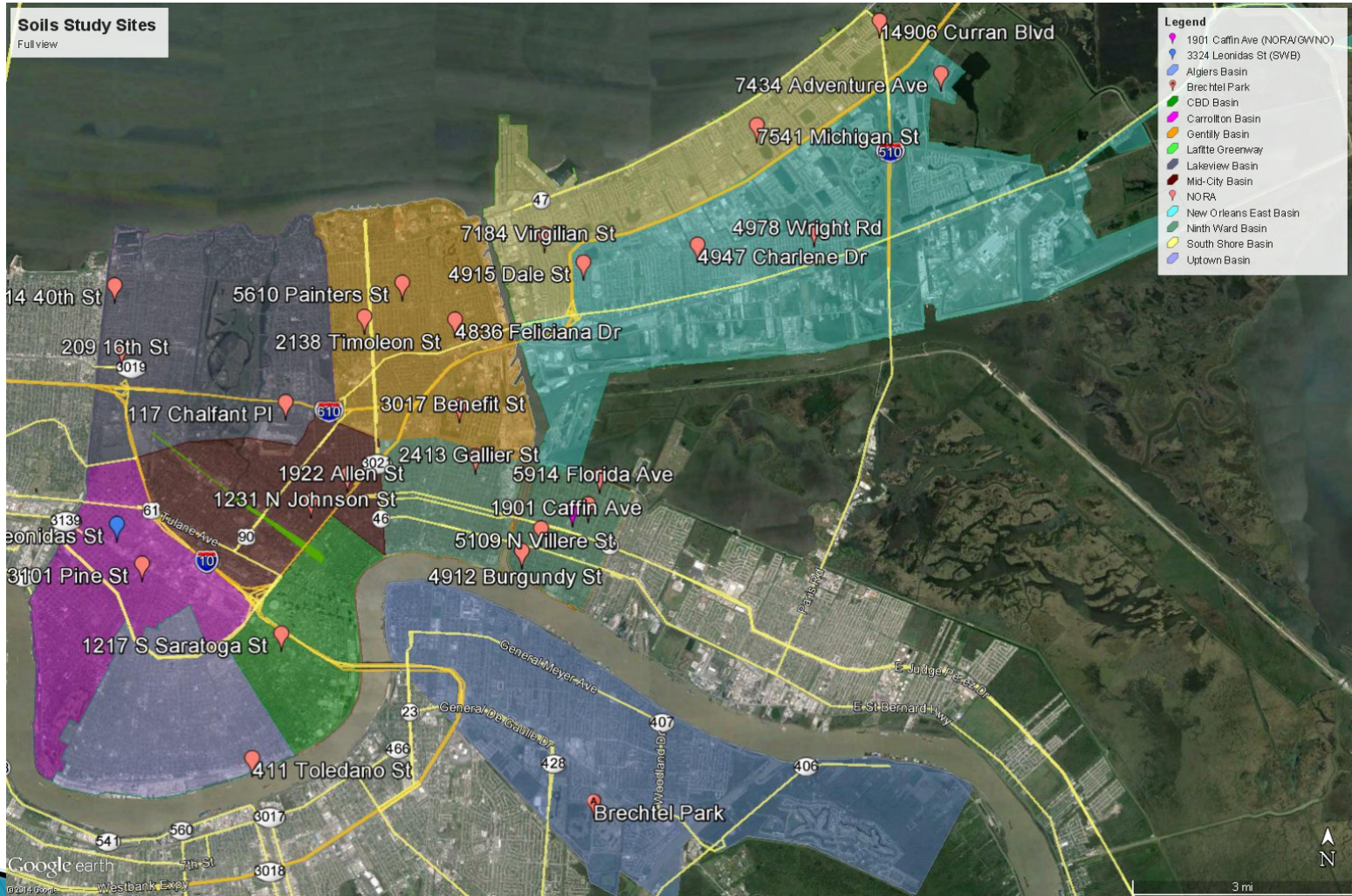


Source: Lopez, John A., 2006, The Multiple Lines of Defense Strategy to Sustain Coastal Louisiana, Lake Pontchartrain Basin Foundation, Metairie, LA January 2006

# Future of NOLA Urban Waters?



# Urban Soils Assessment: *Partnership of City, UWFP and EPA ORD*

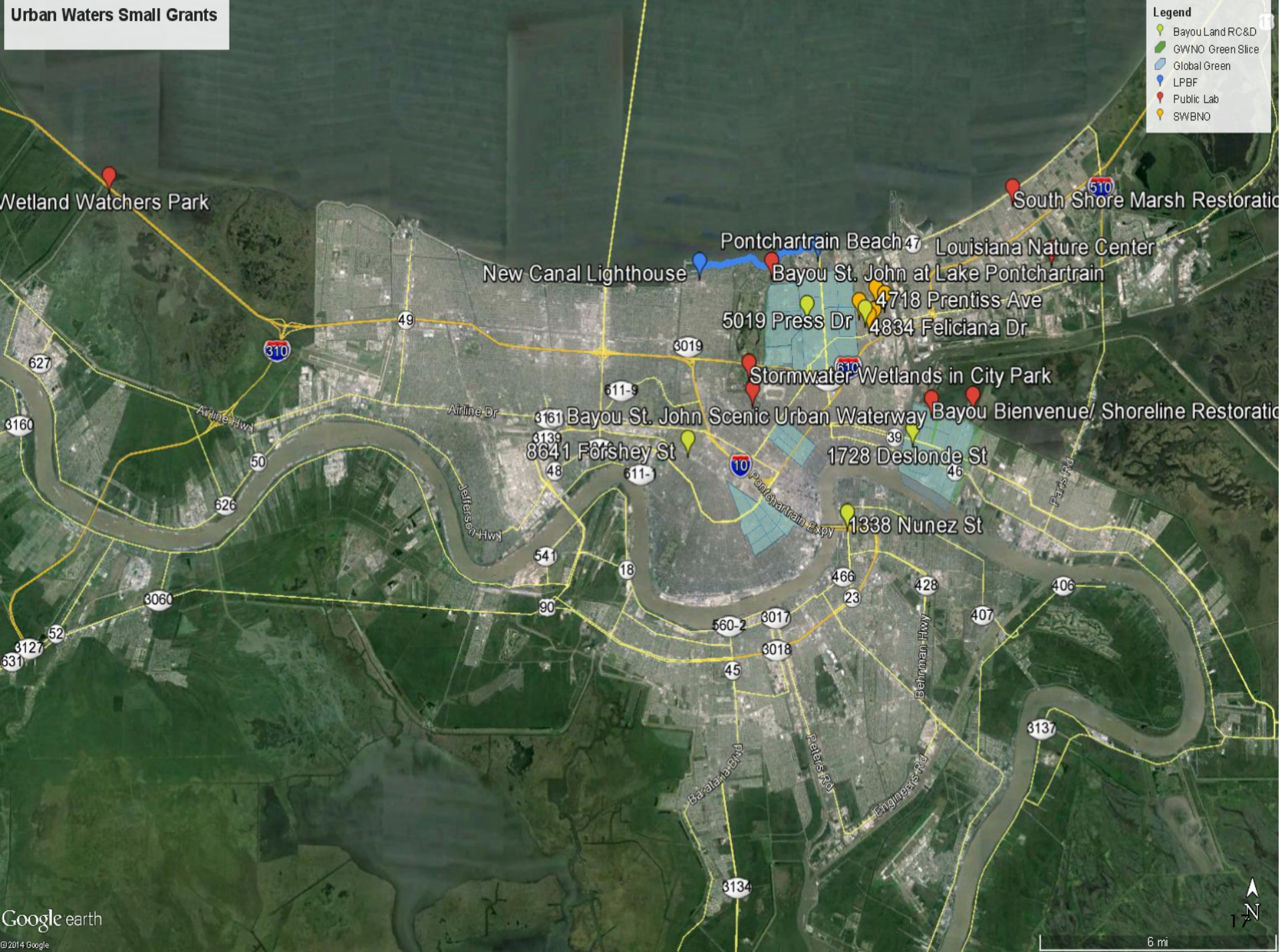




# Urban Waters Small Grants

**Legend**

- Bayou Land RC&D
- GWNO Green Slice
- Global Green
- LPBF
- Public Lab
- SWBNO



# THANK YOU!

Danny Wiegand

ph: (504) 658-4228

email: [wiegand.danny@epa.gov](mailto:wiegand.danny@epa.gov)