

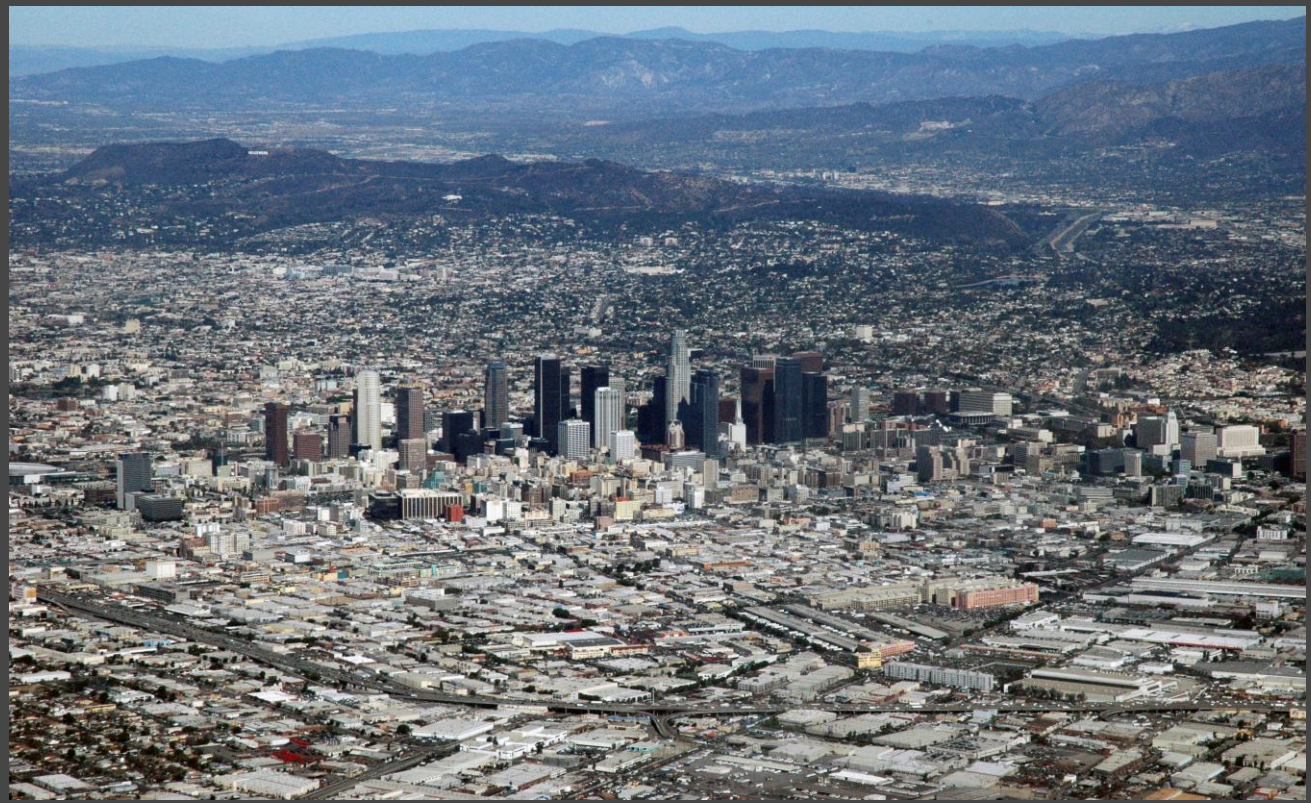


Urban Waters Federal Partnership  
**Los Angeles River Watershed**

2014 Urban Waters National Conference – Arlington, VA



# Metropolitan Los Angeles: A River Runs Through It

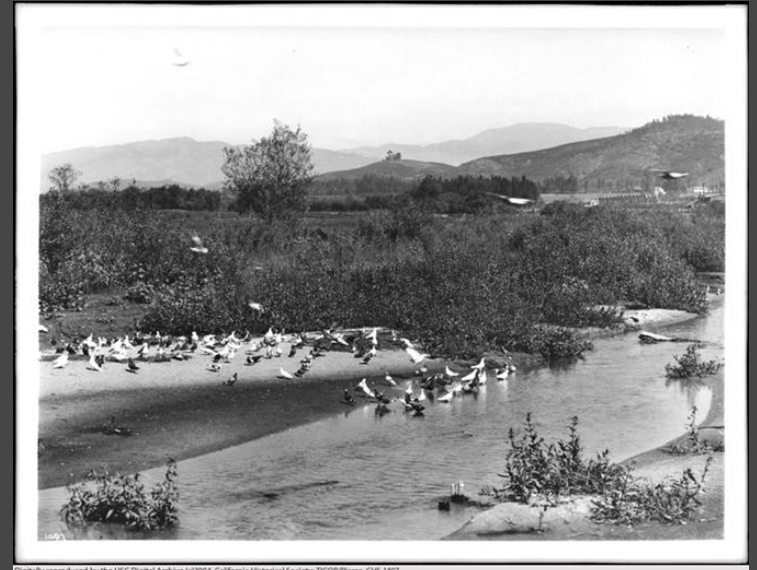


Bruce Perry

Long Beach Harbor



# Los Angeles has a Natural River



Digitally reproduced by the USC Digital Archive (©2004, California Historical Society, TICOR/Perce, CHS-1497)

“El Pueblo de Nuestra Senora la Reina de los Angeles sobre el Rio de Porciuncula”

# Floods of the early 1900s

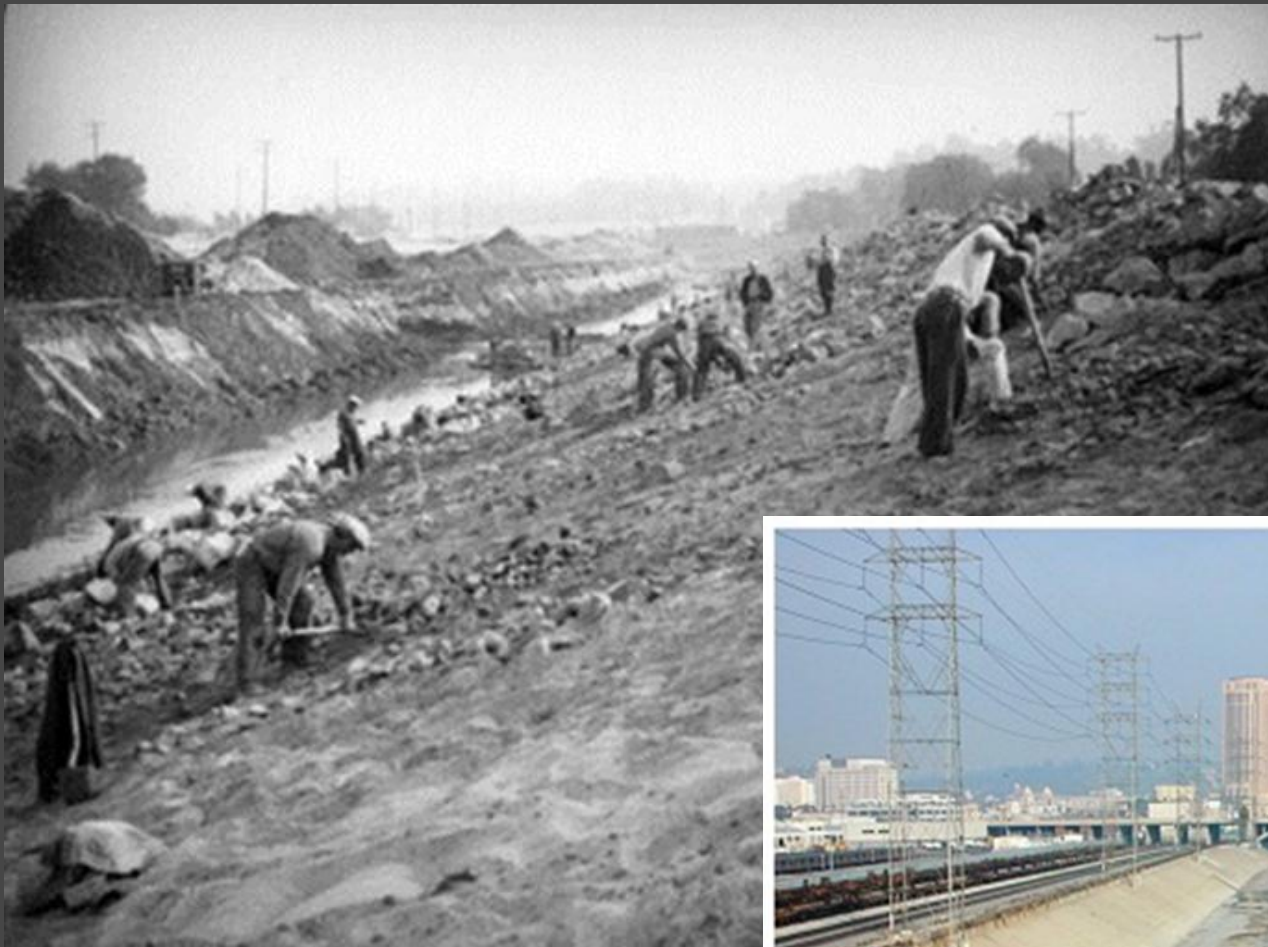


## The Toll...

- 356 people killed
- 4500 homes destroyed
- Railroad infrastructure wrecked

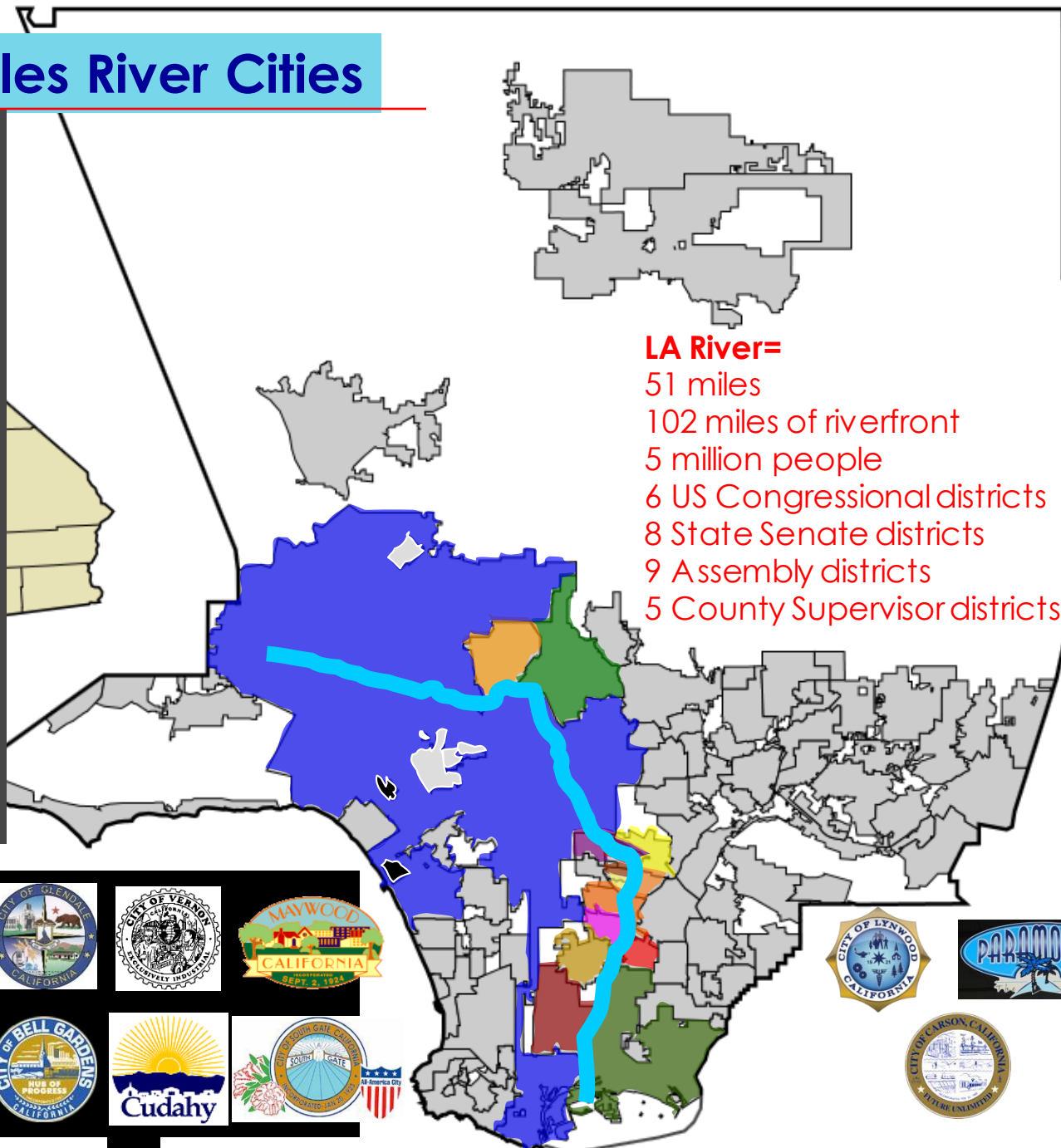


# Taming the River



# Los Angeles River Cities

Los Angeles  
Burbank  
Glendale  
Vernon  
Maywood  
Commerce  
Bell  
Bell Gardens  
Cudahy  
South Gate  
Lynwood  
Paramount  
Compton  
Carson  
Long Beach



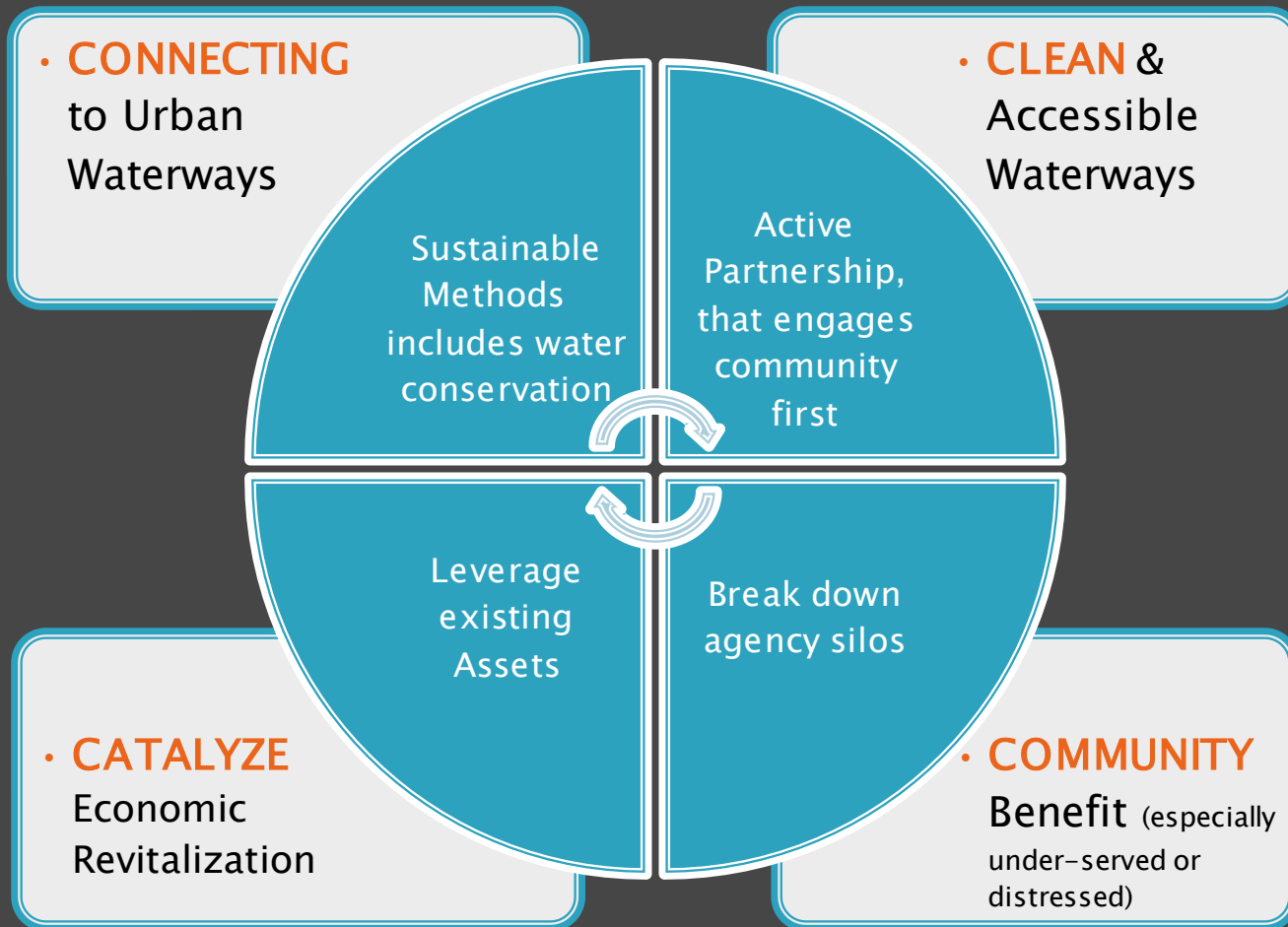
**LA River=**  
51 miles  
102 miles of riverfront  
5 million people  
6 US Congressional districts  
8 State Senate districts  
9 Assembly districts  
5 County Supervisor districts



# A New Vision

- ▶ 1980 – Restoration advocacy organizes
- ▶ 2004 – USACE begins LA River Ecosystem Restoration Feasibility Study (ARBOR)
- ▶ 2006 – City of LA: Revitalization Master
- ▶ 2008 – Kayaker travels all 51 miles
- ▶ 2009 – EPA reaffirms Navigable Waterway
- ▶ 2011 –
  - DOI America's Great Outdoors comes to LA
  - LA River Designated for Urban Waters Federal Partnership
- ▶ 2014 – \$1 B (total) ARBOR Plan settled with USACE by City of LA, Partners and others

# Urban Waters Federal Partnership







870 sq. miles in Watershed and  
close to 10 million in population

LA River's  
Challenge  
#1:  
Scope &  
Population

**Strengths:**

Resources;  
Influence

**Challenges:**

Competing  
Priorities;  
Looming social  
needs;  
Large  
Infrastructure

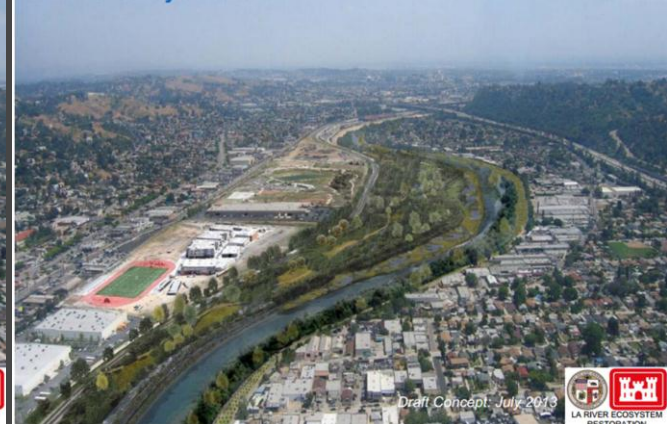
**Strategy:**

Multi-benefit  
projects;  
Quarterbacks;  
More to “work in  
the spaces  
between”

Alternatives 13, 16 & 20 include:  
**LA River at Taylor Yard**



Alternatives 13, 16 & 20 include:  
**LA River at Taylor Yard**



Draft Concept, July 2013





# No community created alike along both sides of River

## LA River's Challenge #2: Community Equity

### Strengths:

Diversity= Modern  
City;  
Creativity;  
Where LA's History  
is at!

### Challenges:

Dislocation where  
do they go?  
Who speaks for  
community?  
Benefits Hopscotch;  
Anti livability Trend;  
EJ issue?

### Strategy:

Always Seat at Table;  
Nurture community  
leadership;  
Be persistent and  
annoying



# 35+ UW Partners in LA

## LA River's Challenge #3: Cannibalism among Stakeholders

### Strengths:

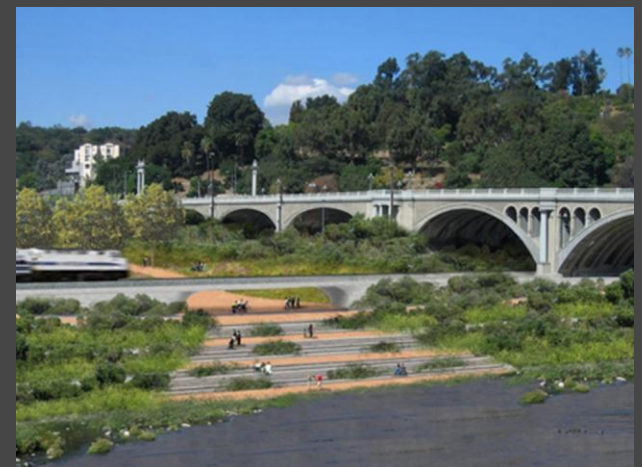
Depth of Expertise  
and Influence;  
Funding Received;  
They are Family

### Challenges:

Political,  
competitive;  
Funding divided  
and diluted;  
Mission Creep;  
They are Family

### Strategy:

New partners  
change dynamic;  
Great Champions;  
Coordinate RFPs  
with UW





# Contact

Pauline Louie

*Watershed Ambassador*

*Urban Waters LA River Partnership*

[pauline@watershedhealth.org](mailto:pauline@watershedhealth.org)

213-229-9947

John Kemmerer

EPA – UWFP Los Angeles River lead

[Kemmerer.john@epa.gov](mailto:Kemmerer.john@epa.gov)

213-244-1834

## Images Courtesy of :

City of LA River Works Office;  
UCLA and USC archives;  
Highland Park Heritage Archives;  
Mia Lehrer Associates and  
USACE

