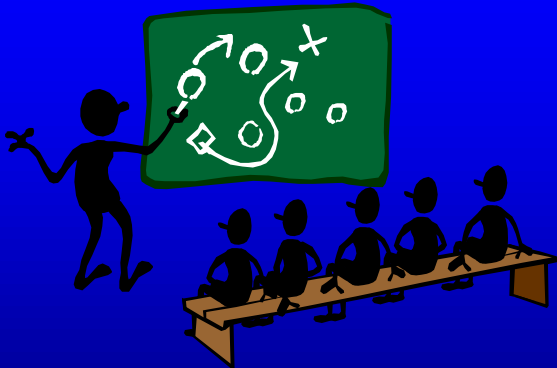
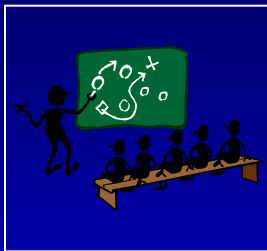


NJIT TAB & USEPA RLF Workshop October 13 & 14, 2010

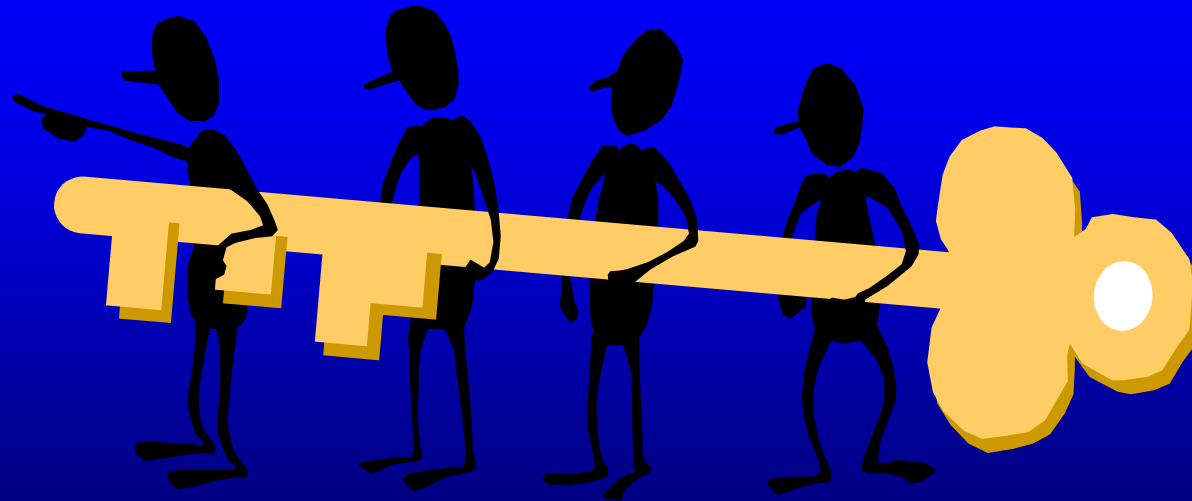


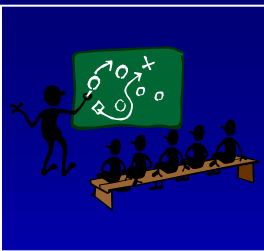
RLF 101
Establishing the RLF Team



Four Key Roles in the RLF Program

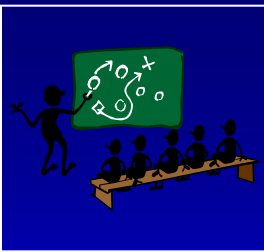
- EPA
- Grant Recipient
- Borrowers
- Cleanup subgrantees





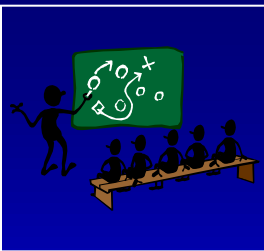
EPA's Role

- Evaluates grantees loan/subgrant applications for:
 - ✓ Site eligibility
 - ✓ Borrower eligibility
- Provides approval so grantee can proceed with loans/subgrants.
- Provides technical support on various issues concerning the RLF program.



Recipient's Role

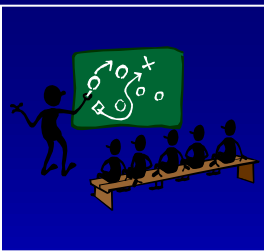
- Recipient is responsible for administering the grant and ensuring compliance with the Terms & Conditions of the RLF.
- Key roles need to be filled in order to administer the RLF:
 - ✓ Project Manager
 - ✓ Fund Manager
 - ✓ Qualified Environmental Professional



Project Manager

- Main point of contact for the recipient.
- Interfaces with EPA on all grant matters and ensures that all grant requirements are met.
- The key to success for any RLF program.

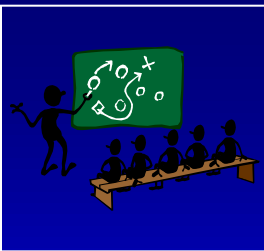




Fund Manager

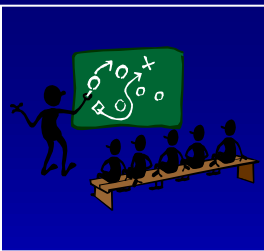
- Responsible for financial management of the grant.
- Carries out responsibilities on a site-specific basis.
- Tracks all funding of RLF (including Program Income).
- Can be a government employee or qualified private/non-profit entity.





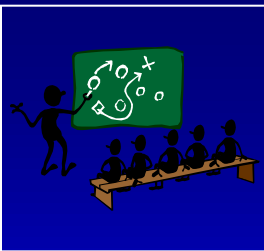
Qualified Environmental Professional (QEP)

- Does not have to be an employee of the recipient:
 - ✓ Can be a local, state, or federal employee
 - ✓ Private contractor
 - ✓ Temp hire by political subdivision of municipality
- Ensures that cleanups are in compliance with appropriate State cleanup program.
- Reviews cleanup plans, alternative analyses, and public comments.
- Monitors cleanup activities.



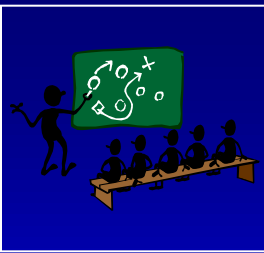
Borrower

- Responsible for complying with eligible fund uses.
- Participates in the development and execution of the environmental cleanup.
- Documents all fund uses as required by the RLF program.
- Contractually responsible to the RLF grant recipient.



Subgrantee

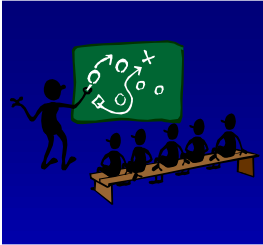
- Responsible for complying with eligible fund uses.
- Documents all fund uses as required by the RLF program.



Conclusion

- Recipient responsibilities under the RLF:
 - 1) Must secure the services of a QEP.
 - 2) Must secure the services of a fund manager.

- EPA responsibilities under the RLF:
 - 1) Ensure recipient has written agreement in place if obtaining QEP from another entity.
 - 2) Ensure recipient has written agreement in place if obtaining a fund manager from another entity.



Questions?

