

# **EPA Public Informational Meeting**

**New Bedford Harbor  
Superfund Site**

**New Bedford, MA**

**Thursday  
April 23, 2015**

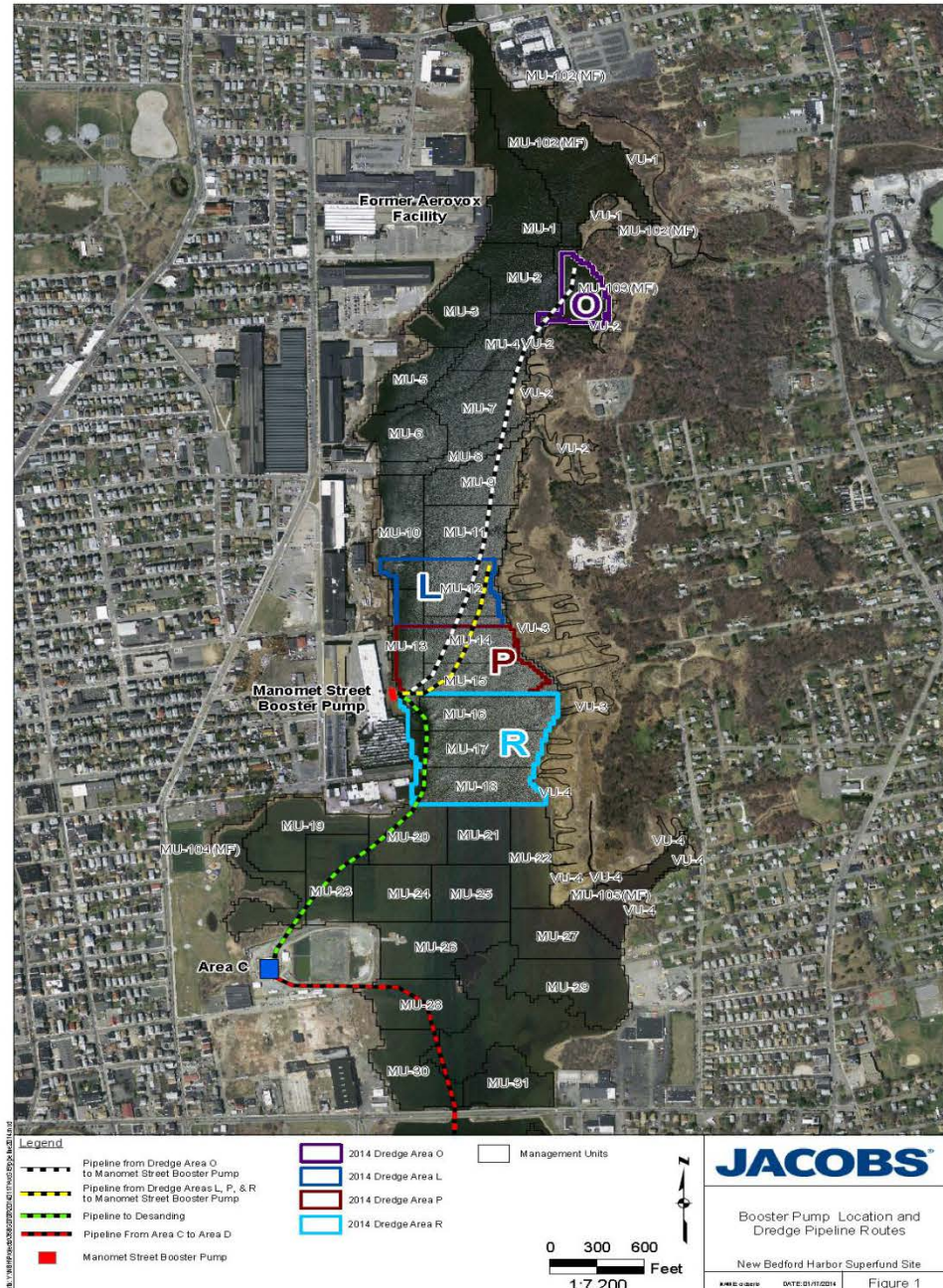
# 2014 Activity Recap

- Hydraulically dredged approx. 77,000 cubic yards of sub-tidal sediment, and shipped processed filter cake and sand for off-site disposal
- Performed ambient air and water quality monitoring as in years past
- Performed fifth round (every five years) of long term site-wide monitoring of sediment chemistry and benthic populations – preliminary results show continued decrease in overall PCB sediment concentrations – results will be posted on our website: [www.epa.gov/nbh](http://www.epa.gov/nbh)
- Completed construction of Phase I Lower Harbor CAD Cell

# 2015 EPA Cleanup Activities

- Continue sampling of the intertidal/shoreline areas to refine our excavation plans
- Continue dredging in the Upper Harbor north of Coggeshall Street Bridge
- Perform archeological surveys for areas to be dredged in 2015 – 2016
- Complete construction of the Lower Harbor CAD Cell
- Continue outreach and education on the seafood consumption advisory

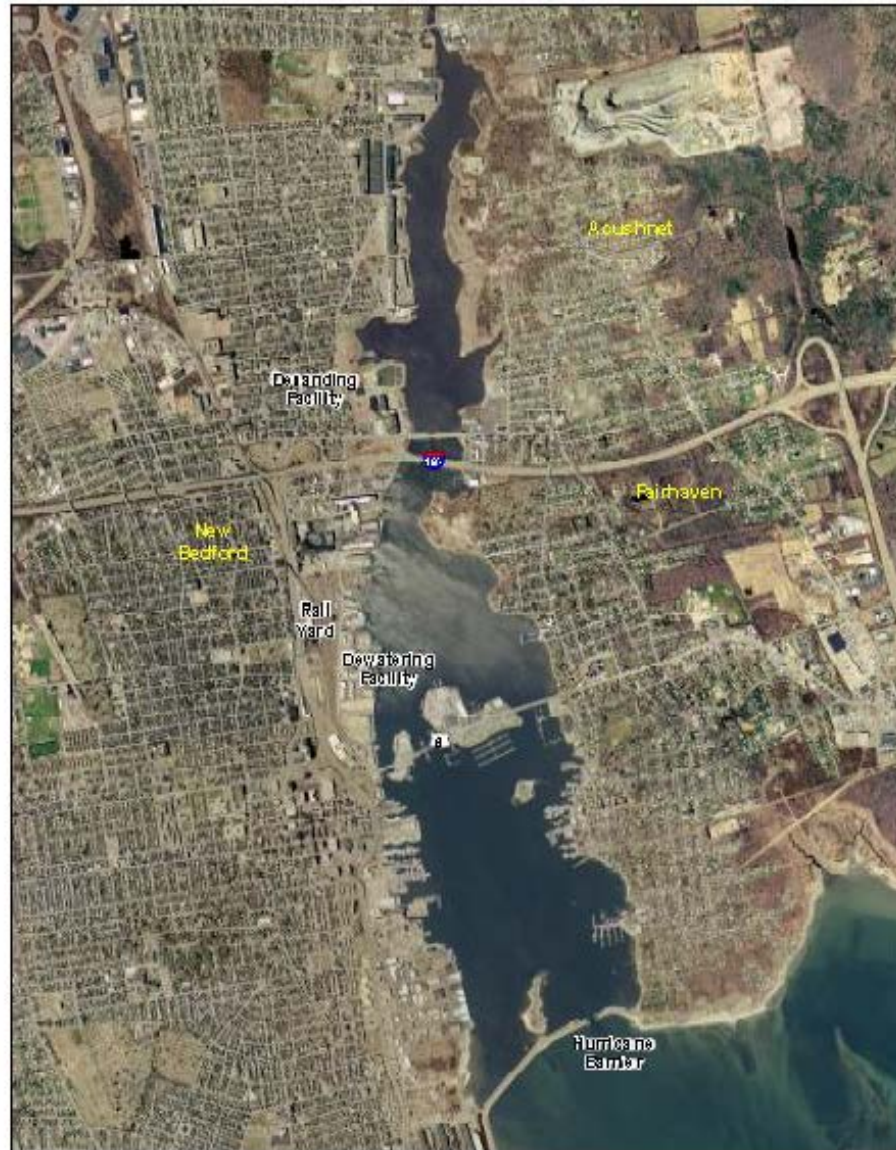
# Upper Harbor





# Operable Unit # 1

## Upper and Lower Harbor



# New Bedford Harbor Superfund Site

