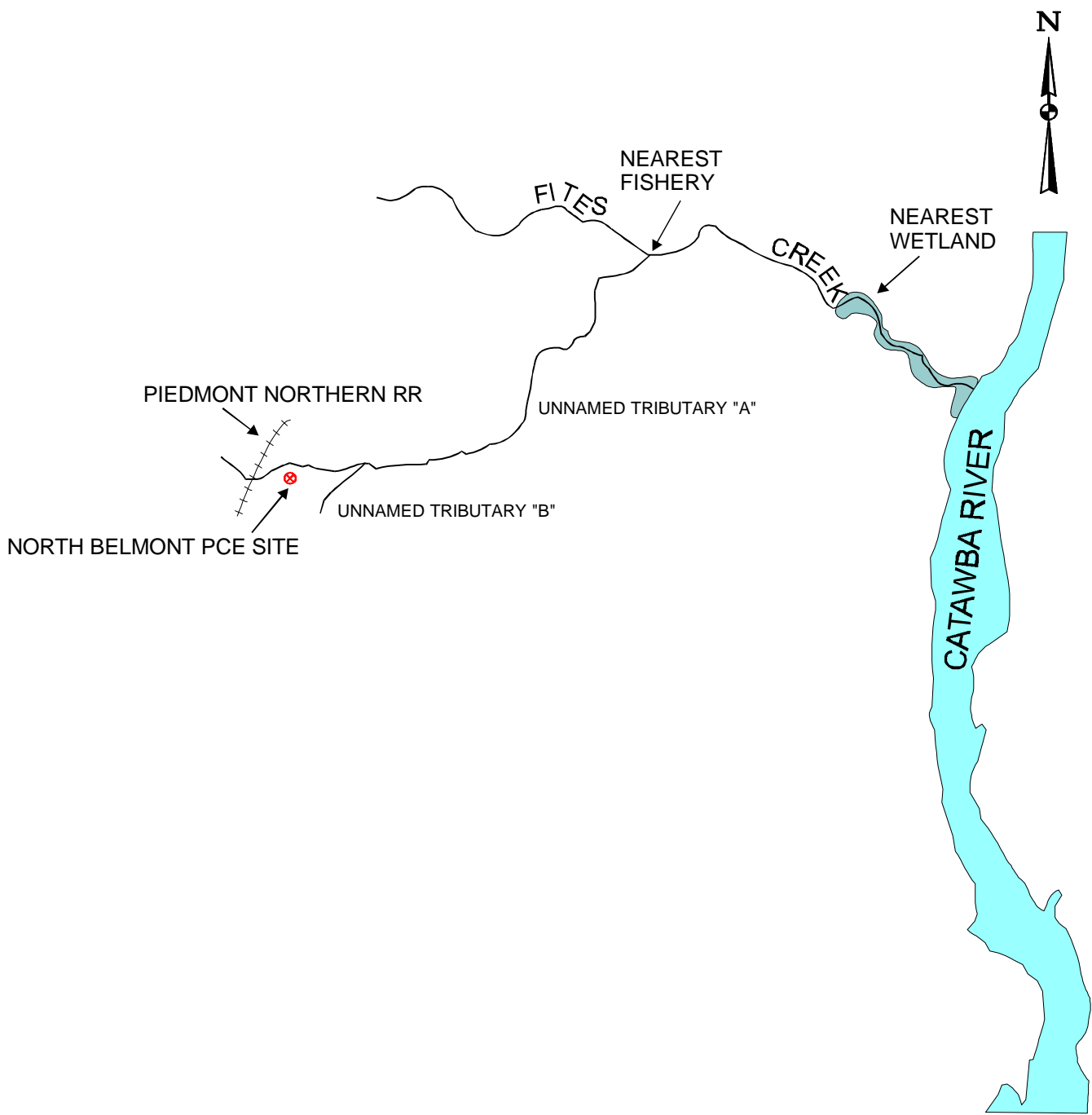


SOURCE: USGS MOUNT HOLLY, NC TOPOGRAPHIC MAP QUADRANGLE, SCALE 1:24000, DATE: 1970

LEGEND:

- - - SAMPLING BOUNDARY
- BUILDINGS

FIGURE 3-1. TOPOGRAPHIC MAP
 REMEDIAL INVESTIGATION REPORT
 NORTH BELMONT PCE SUPERFUND SITE
 NORTH BELMONT, GASTON COUNTY, NORTH CAROLINA
 SESD PROJECT No. 96S-058, JUNE 1997

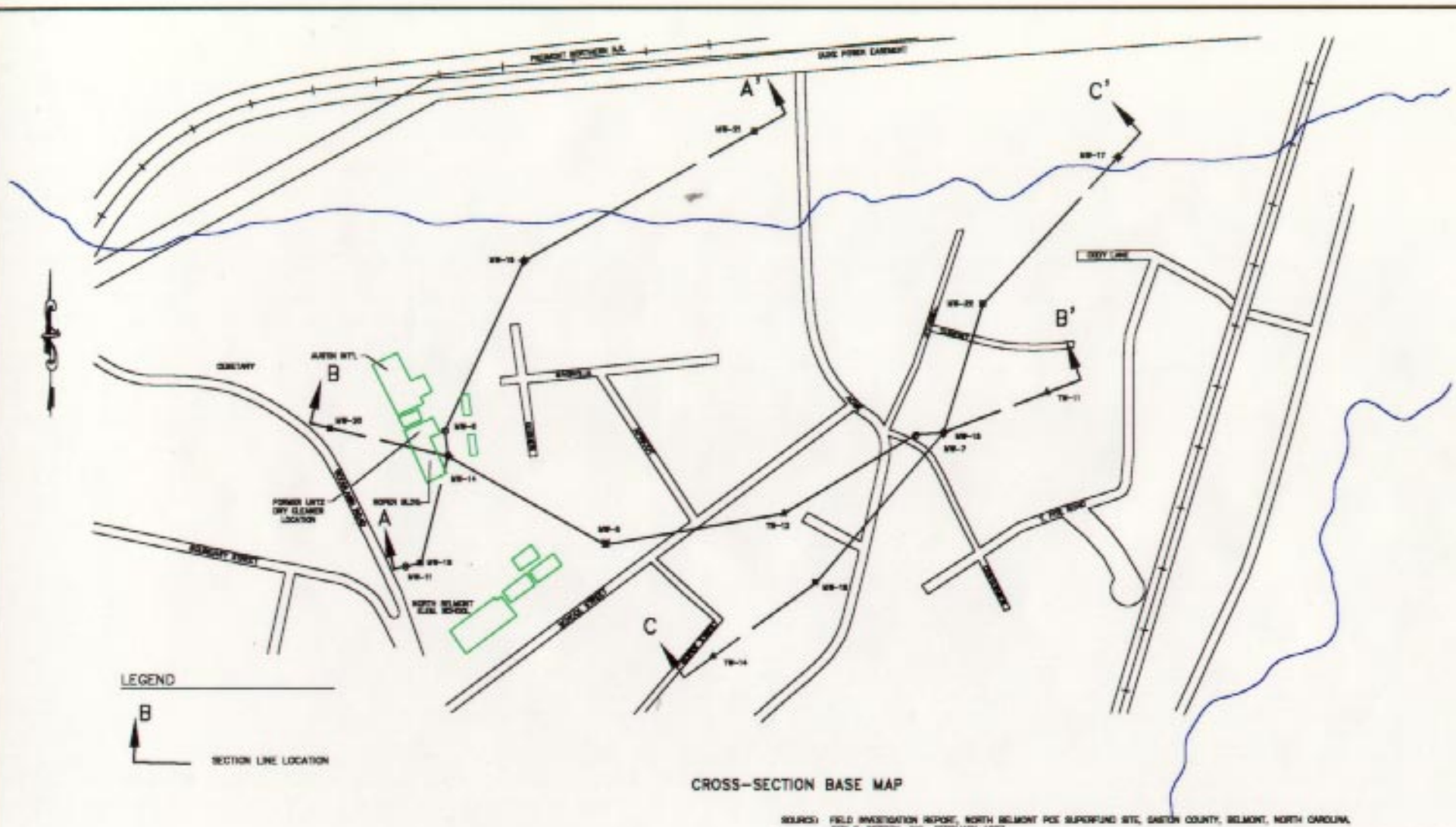


SOURCE: SITE INSPECTION REPORT, NORTH BELMONT PCE SITE, NCD986 187 128,
 GASTON COUNTY, NORTH BELMONT, NORTH CAROLINA, SUPERFUND SECTION,
 NCDEHNR, JULY 1993.

FIGURE 3-2 SURFACE WATER PATHWAY
 REMEDIAL INVESTIGATION REPORT
 NORTH BELMONT PCE SUPERFUND SITE
 NORTH BELMONT, GASTON COUNTY, NC
 SESD PROJECT No. 96S-058, JUNE 1997

DGRIF32.CDR



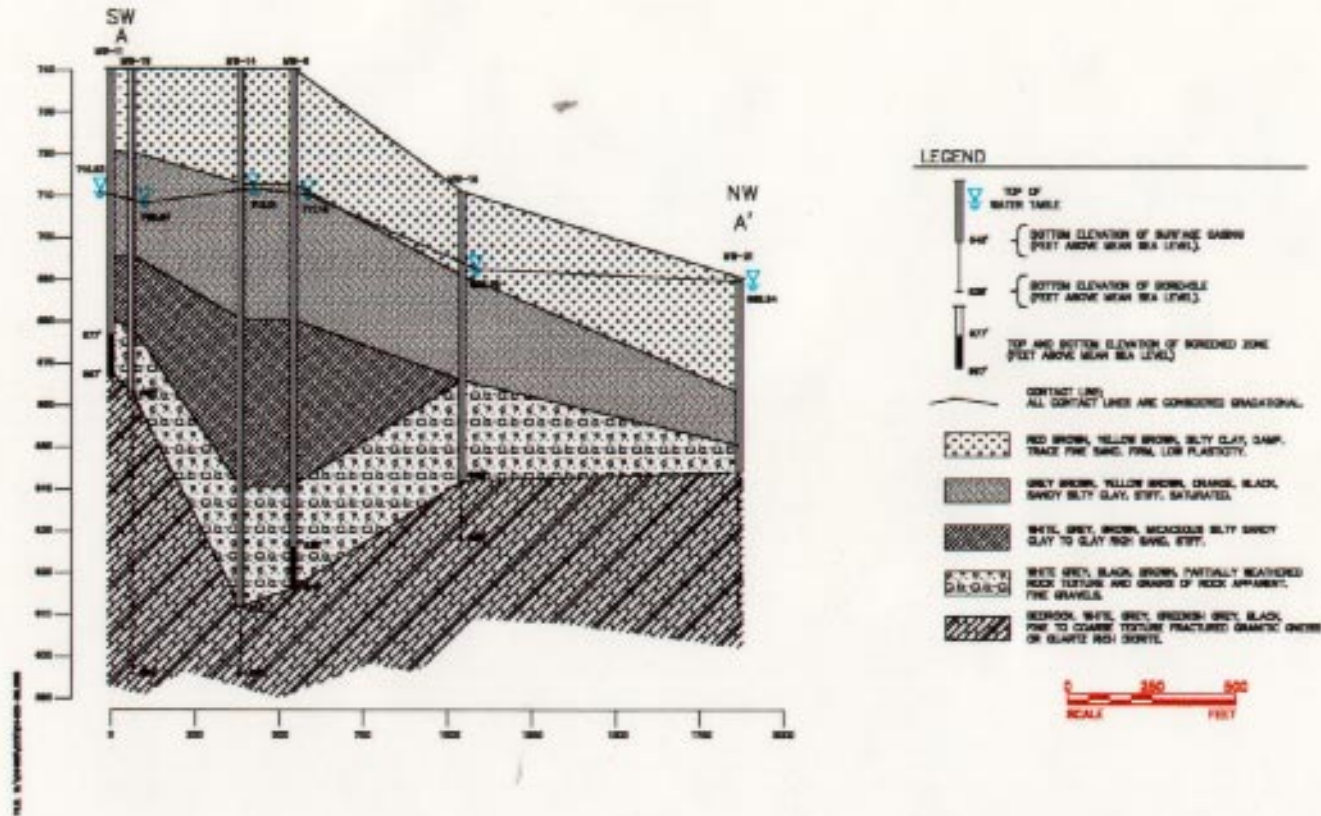


CROSS-SECTION BASE MAP

SOURCE: FIELD INVESTIGATION REPORT, NORTH BELMONT PCE SUPERFUND SITE, GASTON COUNTY, BELMONT, NORTH CAROLINA, SEP. P. WESTON, INC., FEBRUARY 1987.



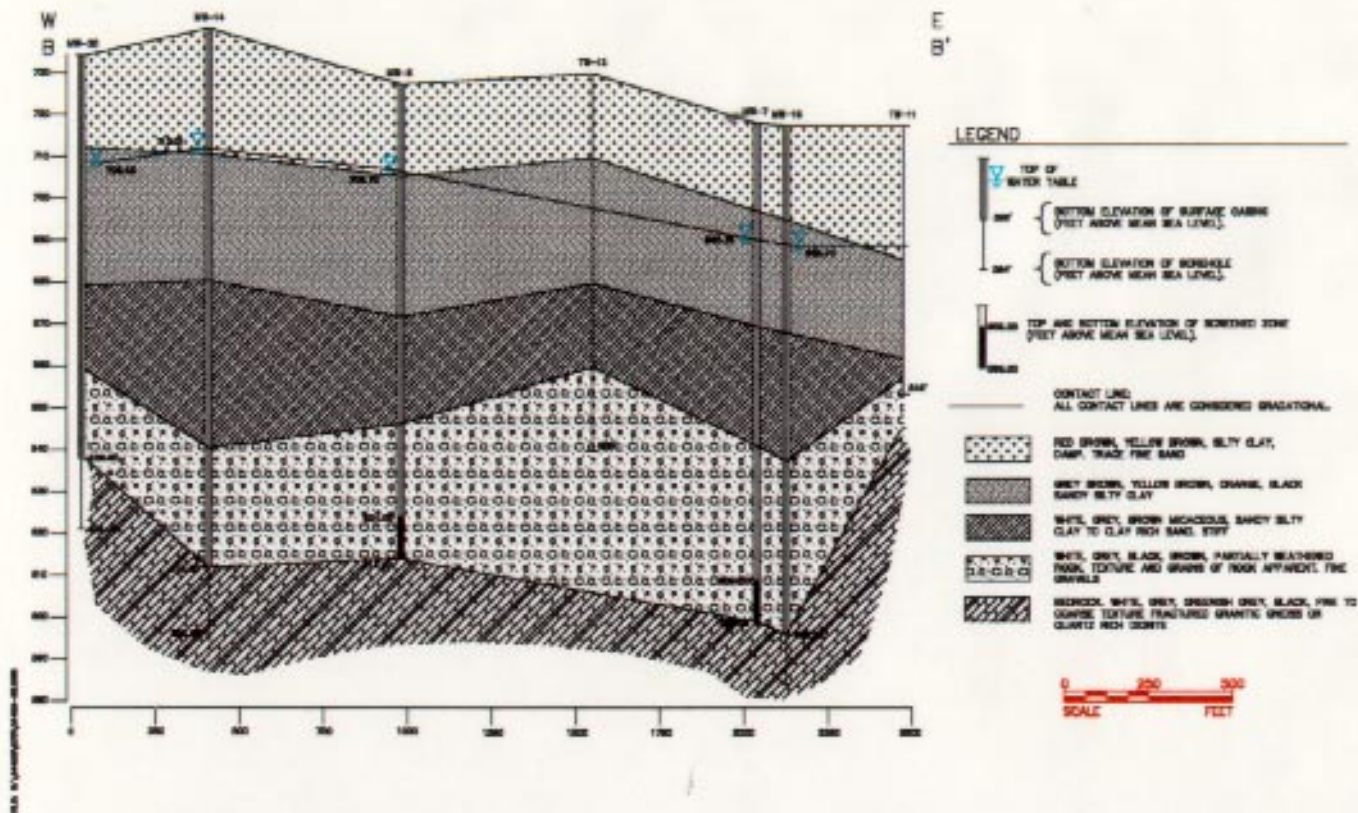
FIGURE 3-3
CROSS-SECTION BASE MAP, AUGUST 1996
REMEDIATION INVESTIGATION REPORT
NORTH BELMONT PCE SUPERFUND SITE
NORTH BELMONT, GASTON COUNTY, NC
SESD PROJECT No. 96S-058, JUNE 1997



SOURCE: FIELD INVESTIGATION REPORT, NORTH BELMONT PCE SUPERFUND SITE, GASTON COUNTY, BELMONT, NORTH CAROLINA, WET F. WESTON, INC., FEBRUARY 1987.



FIGURE 3-4
GEOLOGIC CROSS-SECTION A-A', AUG 1996
REMEDIAL INVESTIGATION REPORT
NORTH BELMONT PCE SUPERFUND SITE
NORTH BELMONT, GASTON COUNTY, NC
SESD PROJECT No. 96S-058, JUNE 1997



SOURCE: FIELD INVESTIGATION REPORT, NORTH BELMONT PCE SUPERFUND SITE, GASTON COUNTY, BELMONT, NORTH CAROLINA, RDT F. BOSTON, INC., FEBRUARY 1997.



FIGURE 3-5
GEOLOGIC CROSS-SECTION B-B', AUG 1996
REMEDIAL INVESTIGATION REPORT
NORTH BELMONT PCE SUPERFUND SITE
NORTH BELMONT, GASTON COUNTY, NC
SESD PROJECT No. 96S-058, JUNE 1997