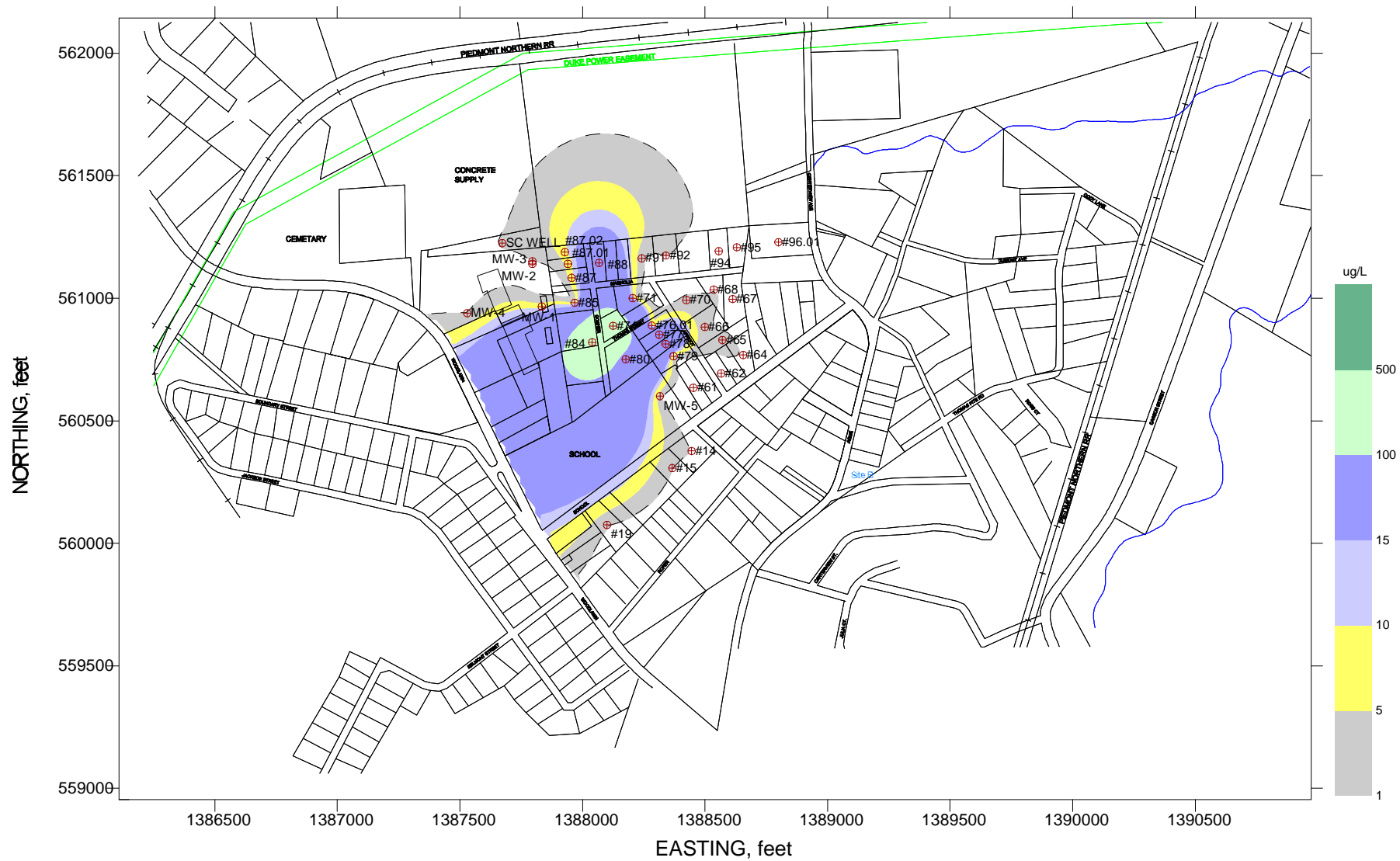


FIGURE 4-1 PCE GROUNDWATER CONTAMINATION, 1991
 REMEDIAL INVESTIGATION REPORT
 NORTH BELMONT PCE SUPERFUND SITE
 NORTH BELMONT, GASTON COUNTY, NC
 SESD PROJECT No. 96S-058, JUNE 1997

NOT TO SCALE

DGR/F41.CDR



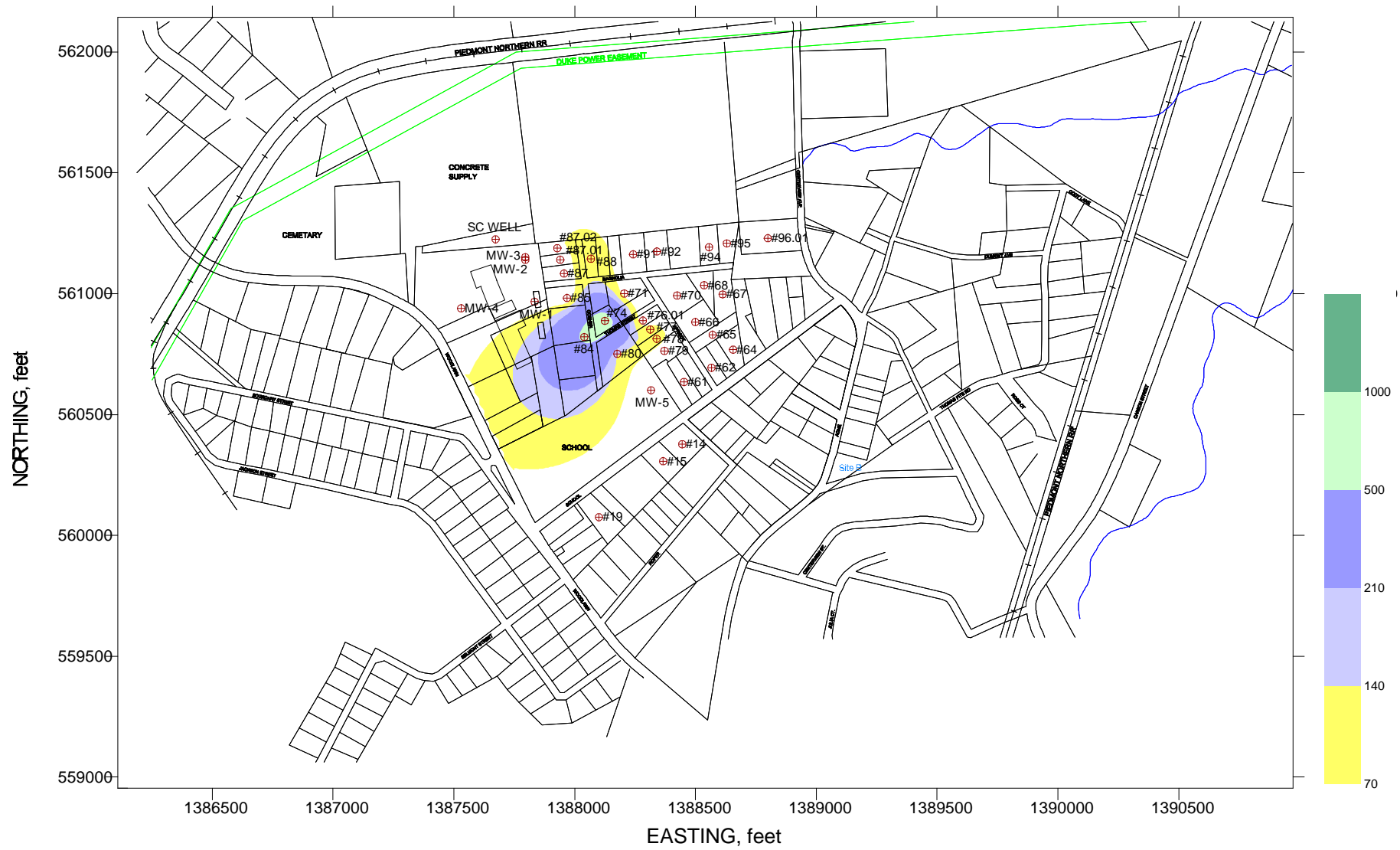


DGR/F42.CDR

FIGURE 4-2 TCE GROUNDWATER CONTAMINATION, 1991
 REMEDIAL INVESTIGATION REPORT
 NORTH BELMONT PCE SUPERFUND SITE
 NORTH BELMONT, GASTON COUNTY, NC
 SESD PROJECT No. 96S-058, JUNE 1997

NOT TO SCALE



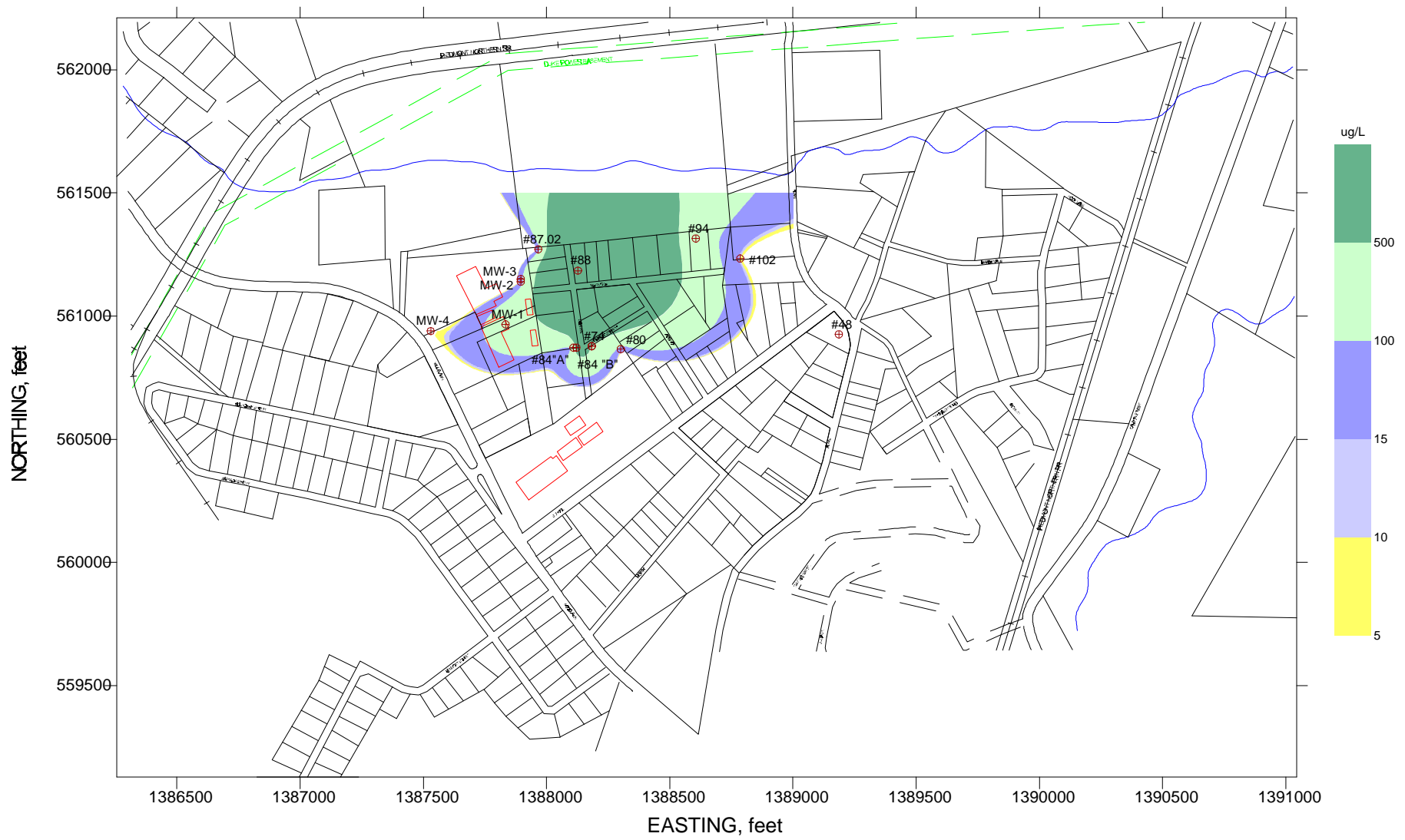


DGR/F43 CDR

FIGURE 4-3 CIS-1,2, DCE GROUNDWATER CONTAMINATION, 1991
 REMEDIAL INVESTIGATION REPORT
 NORTH BELMONT PCE SUPERFUND SITE
 NORTH BELMONT, GASTON COUNTY, NC
 SESD PROJECT No. 96S-058, JUNE 1997

NOT TO SCALE





DGR/F4/CDR

FIGURE 4-4 PCE CONTAMINATION PLUME, MARCH/APRIL 1996
 REMEDIAL INVESTIGATION REPORT
 NORTH BELMONT PCE SUPERFUND SITE
 NORTH BELMONT, GASTON COUNTY, NC
 SESD PROJECT No. 96S-058, JUNE 1997

NOT TO SCALE



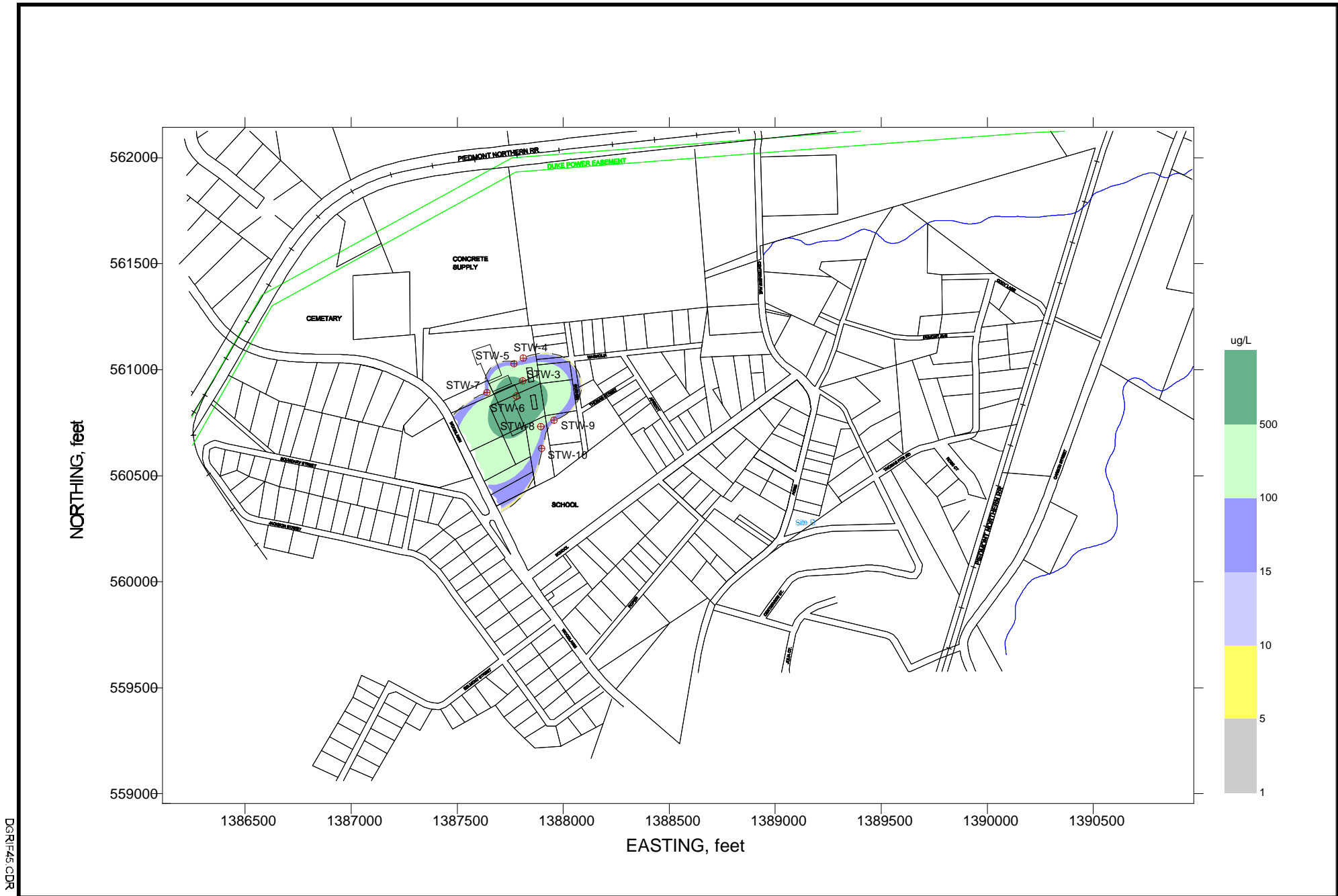
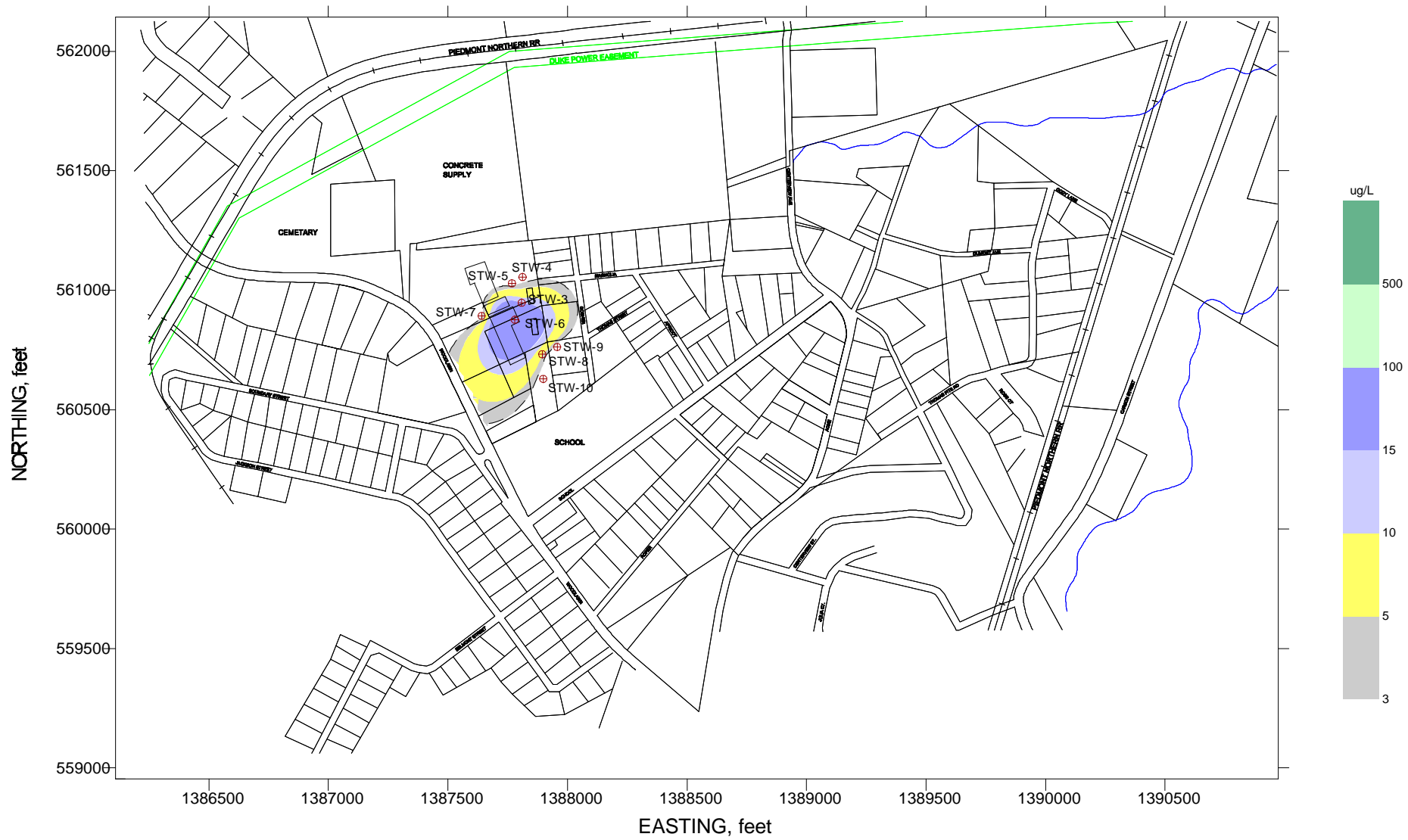


FIGURE 4-5 SHALLOW GROUNDWATER PLUME, PCE CONTAMINATION, JUNE 1996
 REMEDIAL INVESTIGATION REPORT
 NORTH BELMONT PCE SUPERFUND SITE
 NORTH BELMONT, GASTON COUNTY, NC
 SEDS PROJECT No. 96S-058, JUNE 1997

NOT TO SCALE

DGR/FAS/CDR



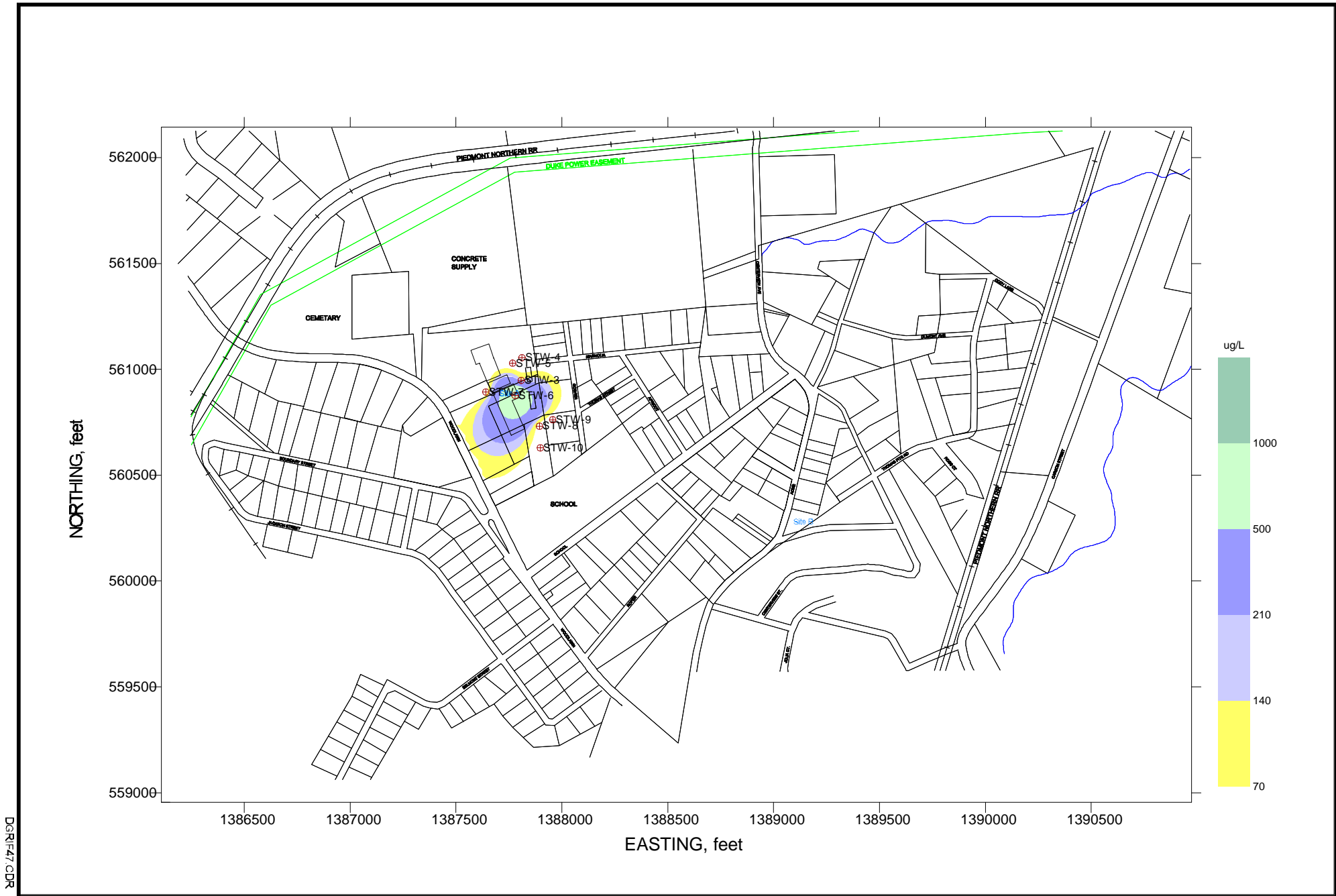


DGR/FAB/CDR

FIGURE 4-6 SHALLOW GROUNDWATER PLUME, TCE CONTAMINATION, JUNE 1996
 REMEDIAL INVESTIGATION REPORT
 NORTH BELMONT PCE SUPERFUND SITE
 NORTH BELMONT, GASTON COUNTY, NC
 SESD PROJECT No. 96S-058, JUNE 1997

NOT TO SCALE



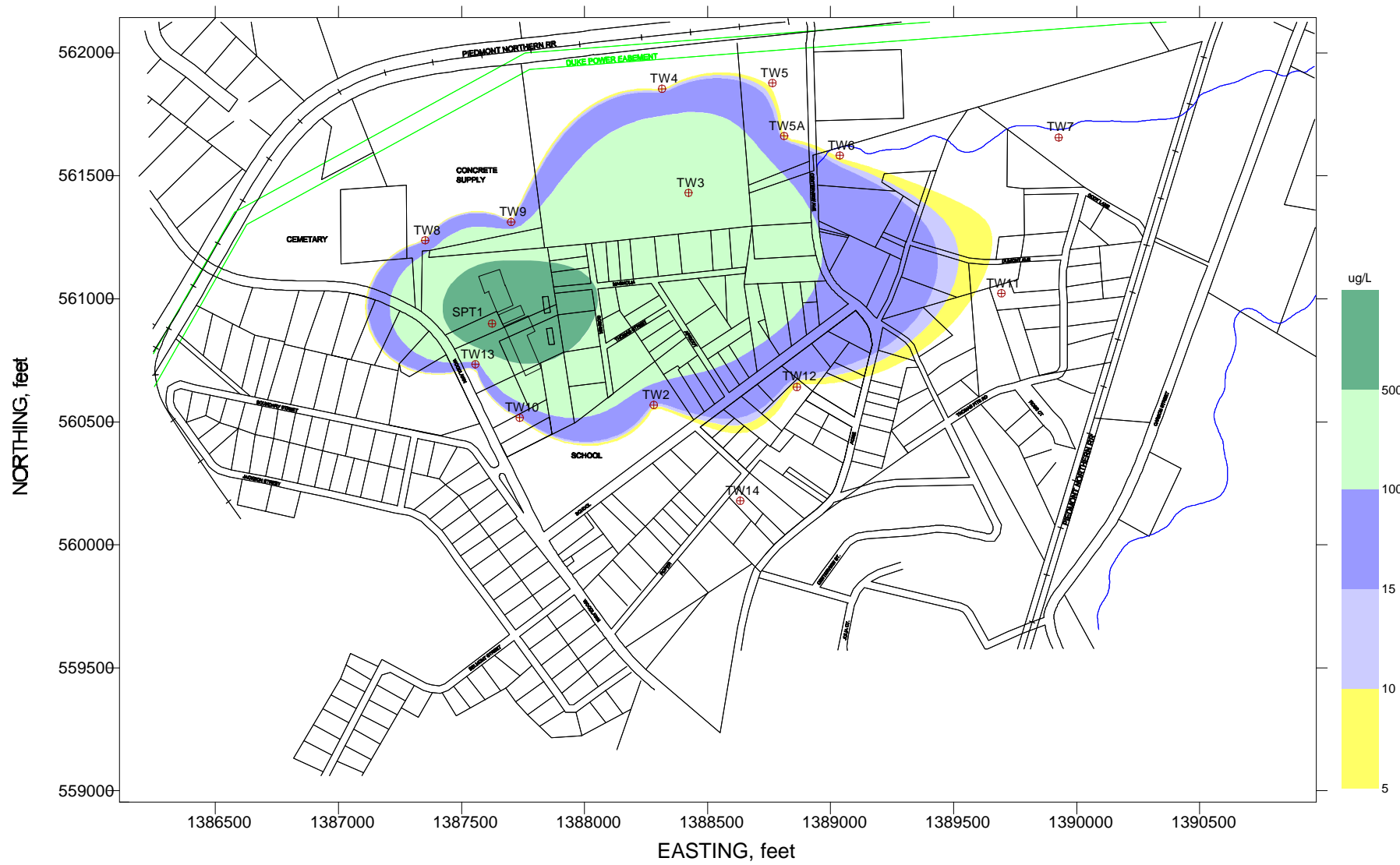


DGR/FAT/CDR

FIGURE 4-7 SHALLOW GROUNDWATER PLUME, DCE CONTAMINATION, JUNE 1996
 REMEDIAL INVESTIGATION REPORT
 NORTH BELMONT PCE SUPERFUND SITE
 NORTH BELMONT, GASTON COUNTY, NC
 SEDS PROJECT No. 96S-058, JUNE 1997

NOT TO SCALE



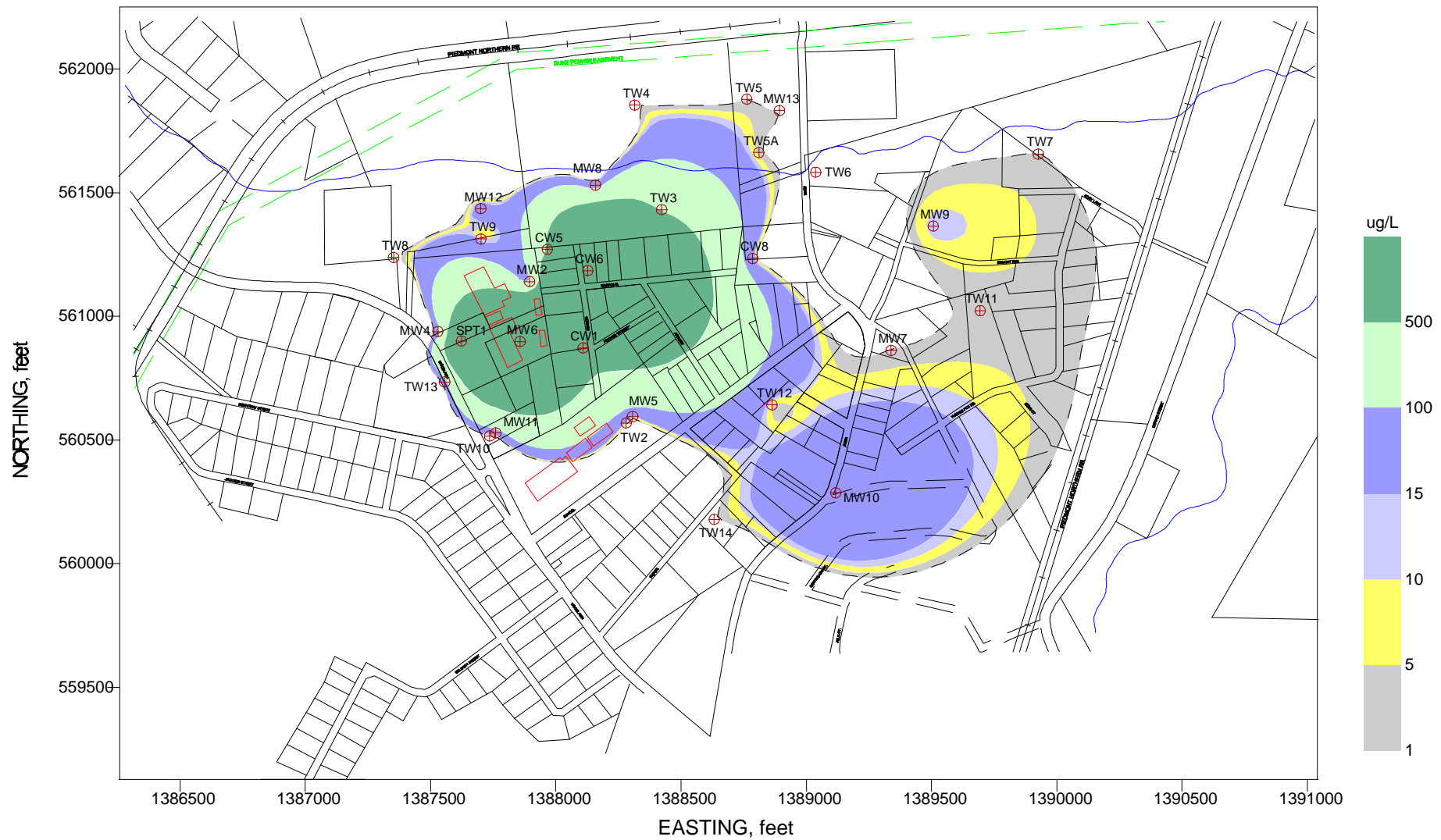


DGR/FAB/CDR

FIGURE 4-8 TOP OF BEDROCK GROUNDWATER PLUME, TEMPORARY WELLS
 PCE CONTAMINATION, JULY/AUGUST 1996
 REMEDIAL INVESTIGATION REPORT
 NORTH BELMONT PCE SUPERFUND SITE
 NORTH BELMONT, GASTON COUNTY, NC
 SESD PROJECT No. 96S-058, JUNE 1997

NOT TO SCALE





DGR/FAS/CDR

FIGURE 4-9 TOP OF BEDROCK GROUNDWATER PLUME (TEMPORARY WELLS and PERMANENT WELLS)
 PCE CONTAMINATION, OCTOBER/NOVEMBER 1996
 REMEDIAL INVESTIGATION REPORT
 NORTH BELMONT PCE SUPERFUND SITE
 NORTH BELMONT, GASTON COUNTY, NC
 SESD PROJECT No. 96S-058, JUNE 1997

NOT TO SCALE

