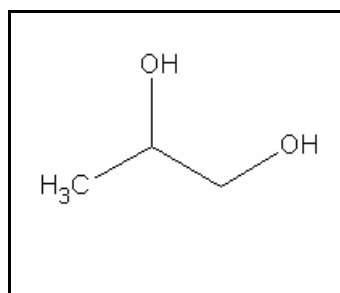




TIER II ACUTE AND CHRONIC AQUATIC LIFE VALUES

PROPYLENE GLYCOL

CAS RN: 57-55-6
Water Solubility: ≥ 10 g/100 mL at 21 C
Log K_{ow} : -1.060^p



Standard

The procedures described in the Tier II methodology indicate that, except possibly where a locally important species is very sensitive, aquatic organisms should not be affected unacceptably if the four (4) day average concentration of propylene glycol does not exceed 78,000 $\mu\text{g/L}$ more than once every three (3) years on the average and if the one (1) hour average concentration does not exceed 700,000 $\mu\text{g/L}$ more than once every three (3) years on the average.

Calculations

Acute Aquatic Life:

$$\text{SAV} = \text{lowest GMAV/SAF}$$

$$\text{Lowest GMAV} = 18,340,000 \mu\text{g/L}$$

$$\text{SAF} = 13.0$$

$$\text{SAV} = 18,340,000/13.0 = 1,410,769 \mu\text{g/L}$$

$$\text{SMC} = \text{SAV}/2 = 1,410,769/2 = \mathbf{700,000 \mu\text{g/L}}$$

Chronic Aquatic Life:

$$SCV = SAV/SACR$$

$$SACR = 18$$

$$SCV = 1,410,769/18 = \mathbf{78,000 \mu g/L}$$

Data

Table 1. GMAVs and SMAVs for propylene glycol

<u>Genus Mean Acute Value ($\mu\text{g/L}$)</u>	<u>Species</u>	<u>Species Mean Acute Value ($\mu\text{g/L}$)</u>	<u>Acute- Chronic Ratio</u>	<u>Reference Number</u>
18,340,000	Cladoceran <u>Ceriodaphnia dubia</u>	18,340,000		1
55,770,000	Fathead Minnow <u>Pimephales promelas</u>	55,770,000		1

References

1. Pillard, D.A. 1995. Comparative toxicity of formulated glycol deicers and pure ethylene and propylene glycol to Ceriodaphnia dubia and Pimephales promelas. Environ. Toxicol. Chem. 14(2): 311-315.

Acronyms/Abbreviations

CAS RN	Chemical Abstract Service Registry Number
K _{ow}	Octanol-Water Partition Coefficient
P (superscript)	Predicted value
SAV	Secondary Acute Value
GMAV	Genus Mean Acute Value
SAF	Secondary Acute Factor
SMC	Secondary Maximum Concentration
SCC	Secondary Continuous Concentration
SACR	Secondary Acute-Chronic Ratio
FT	Flow-through
S	Static
U	Unmeasured
M	Measured
EVISTRA	Evaluation and Interpretation of Suitable Test Results in AQUIRE (EPA quality checking method/database)

Revision History

December 23, 1998 Values first developed
September 19, 2001 New search for data. No studies added.

Contact Information

David B. Kallander
Water Quality Standards Section
Indiana Department of Environmental Management
100 North Senate Ave., P.O. Box 6015
Indianapolis, IN 46206-6015
(317) 233-2472
Email: dkalland@dem.state.in.us