



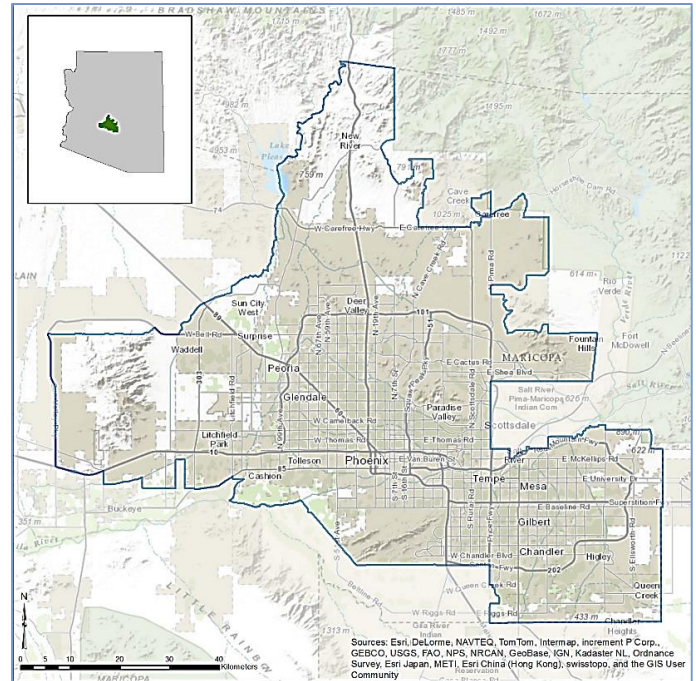
Phoenix, AZ and surrounding area

Towns and cities rely on clean air, clean water, green space, and other natural amenities for economic sustainability and quality of life, yet their benefits are not always fully understood or considered in local decisions. EPA and its partners are producing EnviroAtlas to help communities better use environmental assets for public good.

EnviroAtlas includes an online interactive mapping application that anyone can use. The interactive map contains over 200 maps available for the U.S., as well as 100+ fine-scale maps for selected U.S. communities about existing and potential benefits from the local natural environment. The EnviroAtlas community component is based on 1-meter resolution land cover data. Information derived from these data is summarized by census block groups; more spatially explicit map layers are also provided. This fact sheet highlights some of the many community data layers available for the featured area of Phoenix, Arizona.

Background

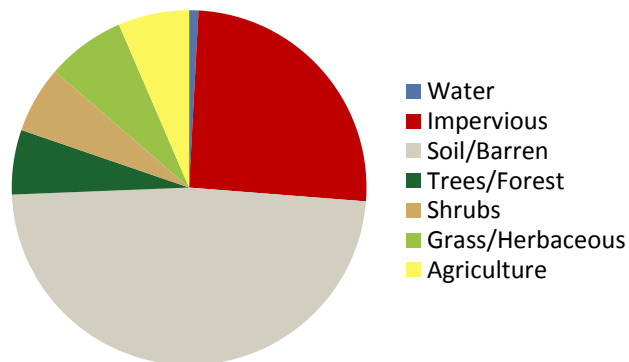
Phoenix is the first EnviroAtlas community in an arid environment. It offers multiple opportunities to leverage existing research and community engagement activities, and had received poor air quality ratings that can be evaluated from a green infrastructure perspective. The EnviroAtlas boundary for the Phoenix area was determined using the 2010 Census definition of an Urban Area. It includes Phoenix, Mesa, and surrounding towns in Maricopa County. It also includes the territories of two Tribes—Salt River Pima-Maricopa, and the Yavapai Nation. The area measures 4,932 square kilometers, and encompasses 2,434 census



block groups.

The Phoenix, Arizona area is in the Sonoran Desert ecoregion. It has a dry, sub-tropical desert climate with hot summers, mild winters and little precipitation. This area is vegetated with cacti and shrubs although there are many areas of intensive agriculture. The community has a very diverse economy and hosts 4 Fortune 500 companies. The largest employers include Banner Health, Wells Fargo, and Bank of America. The demographics of the Phoenix community area indicate that the potential exists for income and other disparities in the distribution of environmental assets. EnviroAtlas includes demographic maps that can help screen for potential health and well-being disparities

Percent Land Cover in Community Area



Phoenix Area Demographics
2010 Census

Total population	3,704,874
Under 13 years old	19.22%
Over 70 years of age	8.30%
Other than white/non-Hispanic	41.50%
Below twice the poverty level	31.21%

resulting from disproportionate distribution of “green infrastructure.”

Ecosystem Services Overview

In EnviroAtlas, the benefits humans receive from nature are grouped into seven categories that demonstrate the interconnectedness of these ecosystem services:

- Clean air
- Clean and plentiful water
- Natural hazard mitigation
- Climate stabilization
- Recreation, culture, and aesthetics
- Biodiversity conservation
- Food, fuel, and materials (data available only for communities with farm land)

Examples of some of the data included in EnviroAtlas are detailed below:

Access to Parks

Parks provide access to green space, encourage physical activity, and improve the livability and aesthetics of urban areas. Those who live closer to parks may be more likely to receive the multiple benefits associated with this proximity.

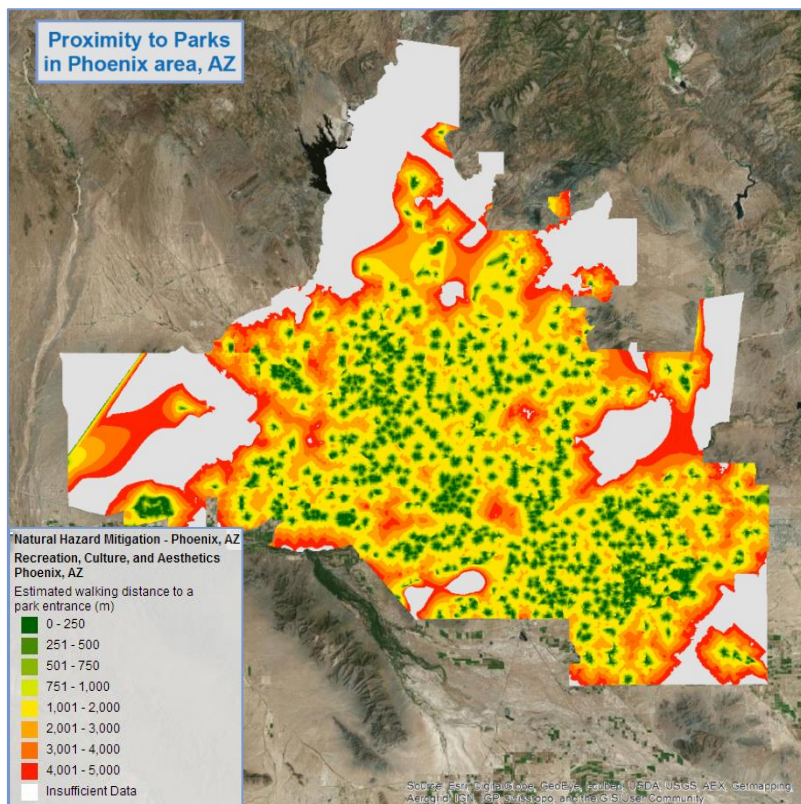
- An estimated 9 percent of the Phoenix area is located within easy walking distance (500 meters) of a park entrance (dark and medium green areas in figure above).
- An estimated 26 percent of the Phoenix area does not have a park entrance within 5 kilometers (grey areas in figure above).

Near-Road Environments

Studies indicate that the capacity of trees to filter air may

EnviroAtlas Tools and Features

- Learn more about and download EnviroAtlas data: <https://www.epa.gov/enviroatlas/enviroatlas-data>
- Search our data layers and access their fact sheets: <https://www.epa.gov/enviroatlas/enviroatlas-dynamic-data-matrix>
- Explore data for the Phoenix community area in our interactive mapping application: <https://www.epa.gov/enviroatlas/enviroatlas-interactive-map>
- Use our Eco-Health Relationship Browser to explore ecosystems, the services they provide, and their benefits to human health and well-being: <https://www.epa.gov/enviroatlas/enviroatlas-eco-health-relationship-browser>
- Contact us with questions about EnviroAtlas: <https://www.epa.gov/enviroatlas/forms/contact-enviroatlas>



reduce the health impacts of vehicular pollution. In EnviroAtlas, you can find analyses of tree coverage near busy roads.

- An estimated 58 percent of the Phoenix area population lives within 300 meters of a busy roadway.
- 52 percent of the estimated Phoenix population lives within 300 meters of a roadway that has little to no tree coverage.

EnviroAtlas combines maps, graphs, and other analysis tools, fact sheets, and downloadable data into an easy-to-use, web-based educational and decision-support tool. EnviroAtlas helps users understand the connections between the benefits we derive from ecosystem services and the natural resources that provide them. For more information, please visit www.epa.gov/enviroatlas.