

# San Diego, 2050 Is Calling.

## HOW WILL WE ANSWER?



### FACING THE FUTURE:

How Science Can Help Prepare San Diego Regional Leaders for Climate Change





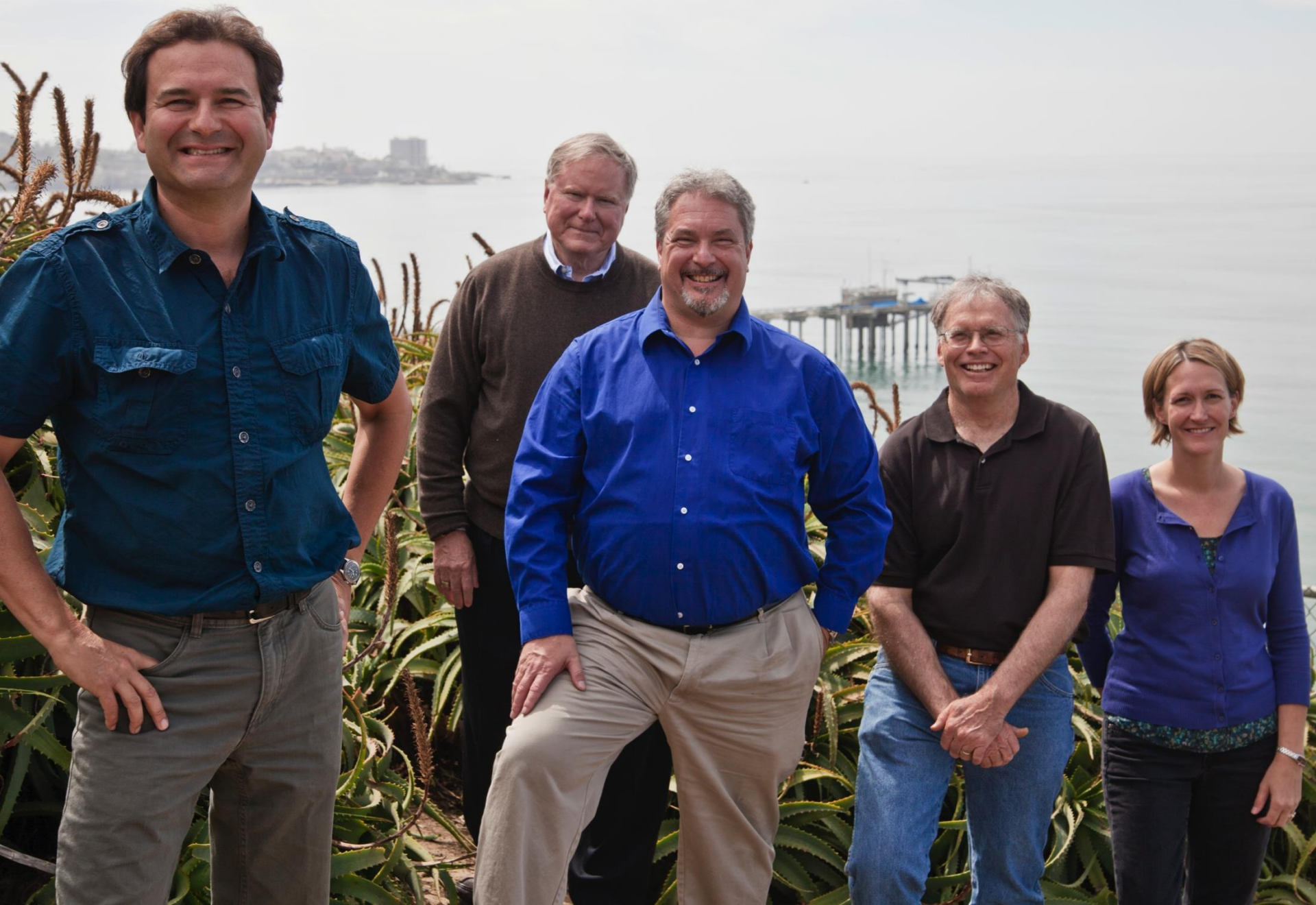




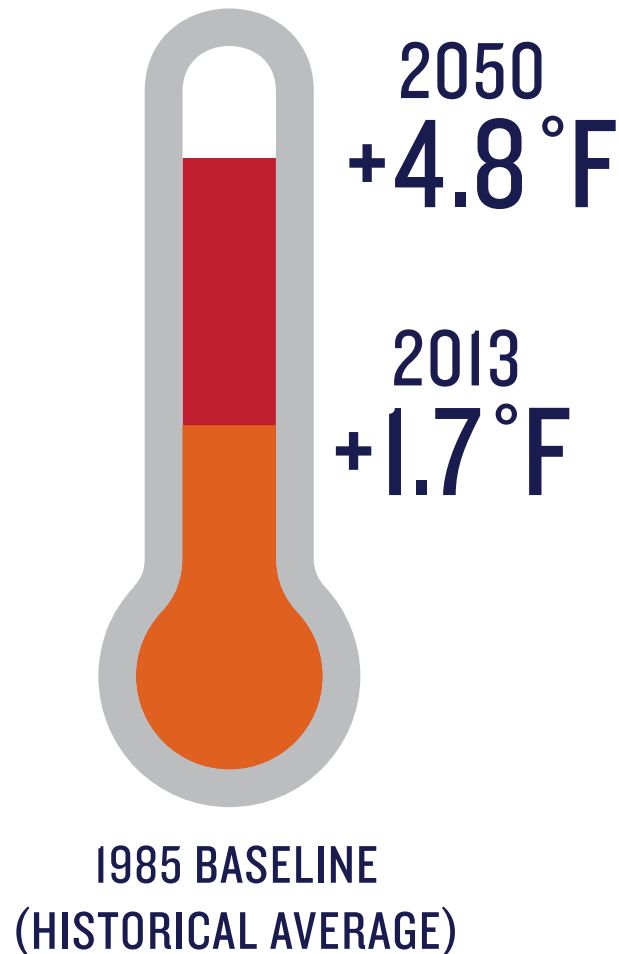








**ANNUAL AVERAGE TEMPERATURE IS INCREASING  
AND WILL CONTINUE TO INCREASE  
BETWEEN NOW AND 2050:**



**WE EXPECT TO SEE CHANGES IN OUR REGION'S  
PRECIPITATION PATTERNS:**



**17% FEWER RAINY DAYS**



**13% MORE RAINFALL DURING  
THE BIGGEST RAINSTORMS**







# HOMES LOST ANNUALLY TO WILDFIRES IN SOUTHERN CALIFORNIA

Sprawling urban growth has given rise to a growing number of wildfires in the wildland-urban interface and increased loss of homes in Southern California.

500



1950 TO 2000

1,000



2000 TO PRESENT

# WHERE DOES SAN DIEGO COUNTY'S WATER COME FROM?

BAY-DELTA  
STATE WATER  
PROJECT

**20%**

LOCAL  
SUPPLIES

**17%**

COLORADO  
RIVER

**63%**



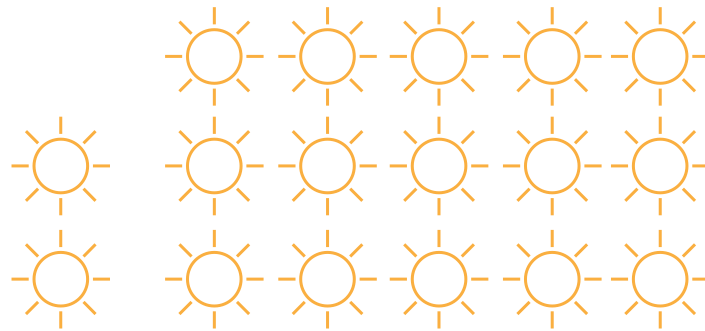








**BY 2050, SCIENTISTS EXPECT THAT WE WILL HAVE  
7 TIMES AS MANY DAYS OF EXTREME HEAT PER YEAR  
THAN THE PRE-2000 HISTORICAL AVERAGE.**



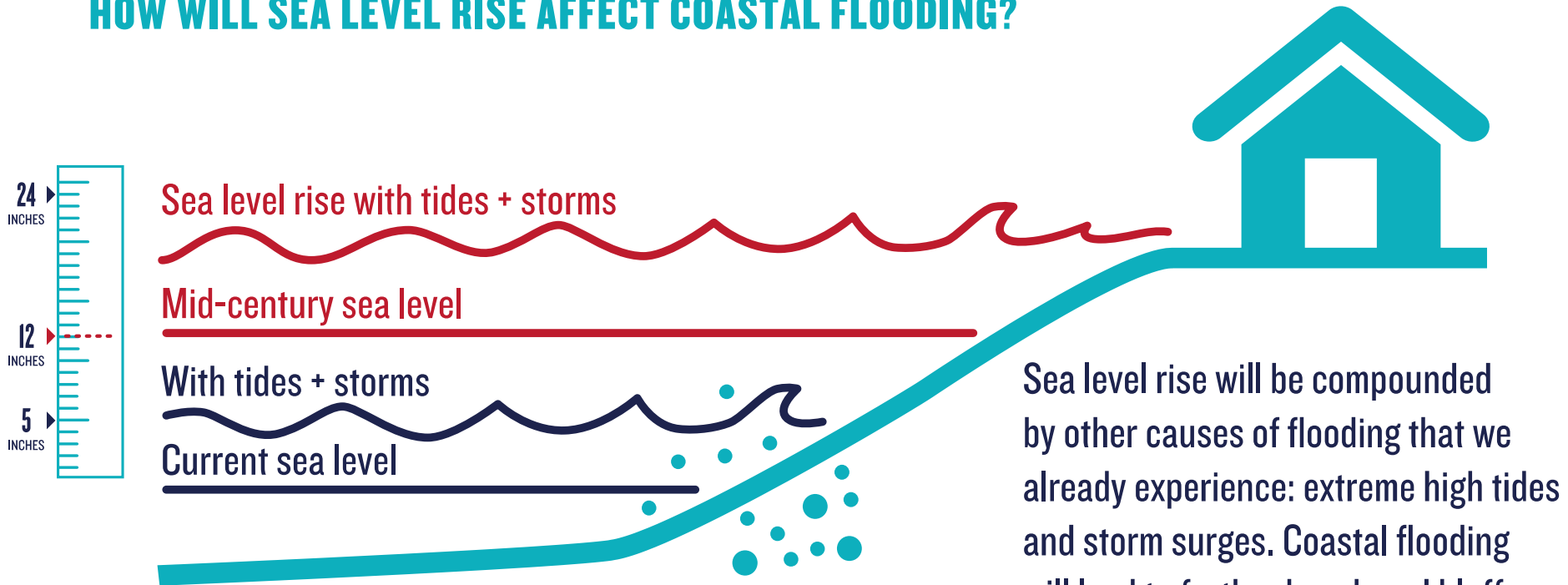
NOW  
2 DAYS

MID-CENTURY  
15 DAYS





## HOW WILL SEA LEVEL RISE AFFECT COASTAL FLOODING?



Sea level rise will be compounded by other causes of flooding that we already experience: extreme high tides and storm surges. Coastal flooding will lead to further beach and bluff erosion as well as runoff and drainage problems from intense storms.





*Photo by Alexander Gershunov*







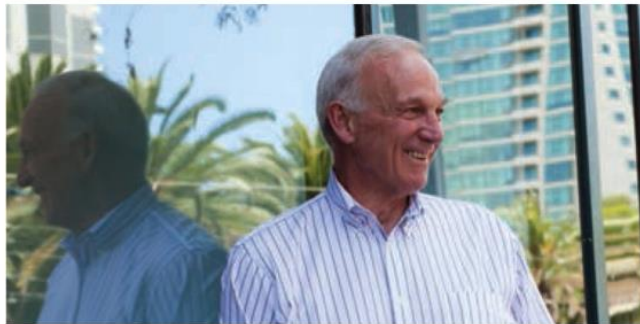
8/10



7/10



































# Climate Collaborative

SAN DIEGO REGION



# San Diego, 2050 Is Calling.

## HOW WILL WE ANSWER?



### FACING THE FUTURE:

How Science Can Help Prepare San Diego Regional Leaders for Climate Change

[www.sandiego.edu/2050](http://www.sandiego.edu/2050)