

Project Fact Sheet

Occidental Chemical Corporation
Facility, New Castle, Delaware

August 2014

This is the first project Fact Sheet prepared to provide the community with the status of the remedy implementation activities at the Occidental Chemical Corporation Facility. The approximately 200-acre Facility is located three miles northwest of Delaware City in New Castle County, Delaware and lies south of the confluence of Red Lion Creek and the Delaware River. The Facility is in a heavily industrial setting.

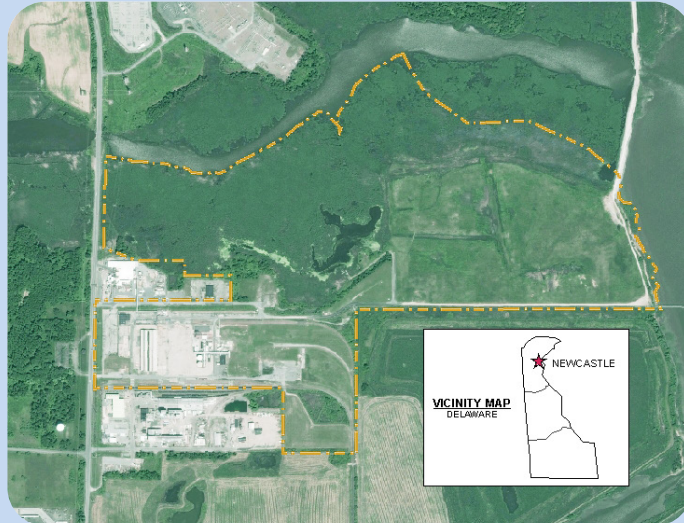
The Facility was built in 1964 by Diamond Alkali Company to manufacture chlorine, hydrogen, sodium hydroxide and potassium hydroxide, and it operated as a chlor-alkali plant from 1964 through 2007. The site was purchased by OxyChem in 1986, and OxyChem operated the Facility from 1986 through 2007. Chlorine production stopped in November 2005, and production of anhydrous potassium hydroxide was discontinued in 2007. Decommissioning and demolition of most plant structures was completed in 2007 and 2008.

To address RCRA corrective action requirements applicable to the Facility, OxyChem entered into an Administrative Order on Consent with EPA on June 28, 1991, pursuant to Section 3008(h) of RCRA. Under the RCRA Corrective Action Program, OxyChem completed a RCRA Facility Investigation, Interim Measures, Human Health and Ecological Risk Assessments, and a Corrective Measures Study.

OxyChem entered into an Administrative Order on Consent with EPA in June 2012 for implementation of the final remedy. A Corrective Measures Implementation (CMI) Work Plan describing the strategy for remedy construction, including a schedule and sequence of remedy design documents, was developed in coordination between EPA, Delaware Department of Natural Resources and Environmental Control (DNREC) and OxyChem and was approved by EPA in June 2013.

OxyChem is in the process of implementing the final remedies for the Facility under the RCRA Corrective Action CMI Program. These final remedies will be implemented in phases during the next several years.

Project Fact Sheets will be issued periodically during the implementation of the RCRA Facility activities to keep the community informed.



After demolition of certain structures, upcoming RCRA Facility activities for the remainder of 2014 and early part of 2015 will include:

1. Implementation of the Soil Remedy

This includes excavation of surficial soil impacts with on-site consolidation in the former cell room area.

2. Groundwater Field Pilot Studies

These studies will determine final design criteria for the in-situ enhanced bioremediation remedy on-site. This includes determination of the dosing for reagent addition, spacing of wells and other operating criteria for the full-scale implementation in 2015.

3. Sediment Design Testing

Bench scale tests are underway to verify the design parameters related to a reactive cap to be installed in the adjacent tributary area. Testing will continue through 2014 and into 2015.

Please direct any questions about this project to either:

Mr. Rick Passmore
Glenn Springs Holdings, Inc.
(972) 687-7504

Rick_Passmore@oxy.com

Ms. Donna McCartney of U.S. EPA
(215) 814-3427

McCartney.Donna@epa.gov

Additional information can be found at EPA's web site for the OxyChem Facility:

<http://www.epa.gov/reg3wcmd/ca/de/webpages/ded003913266.html>