



# Schuylkill Banks Greenway Stormwater Management

**Presented to:  
Delaware River Urban Waters  
All Partners Meeting**

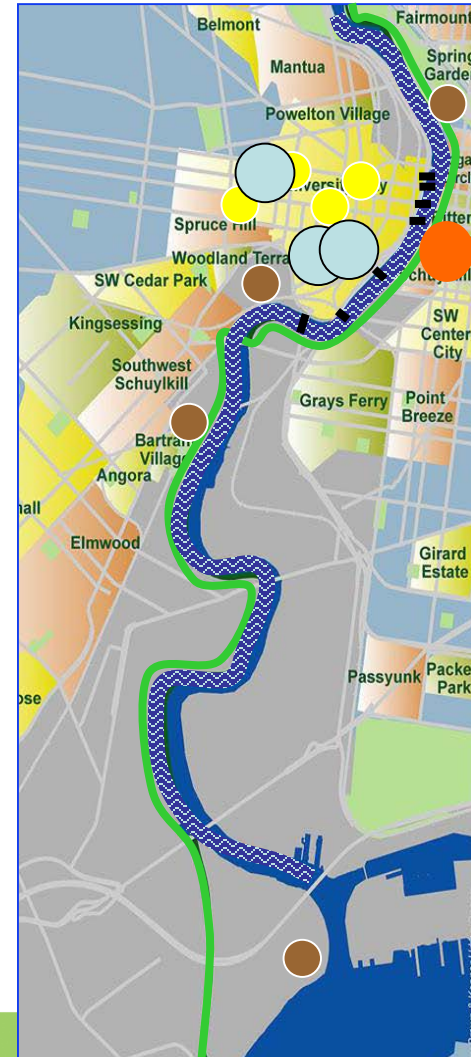
**May 12, 2015**

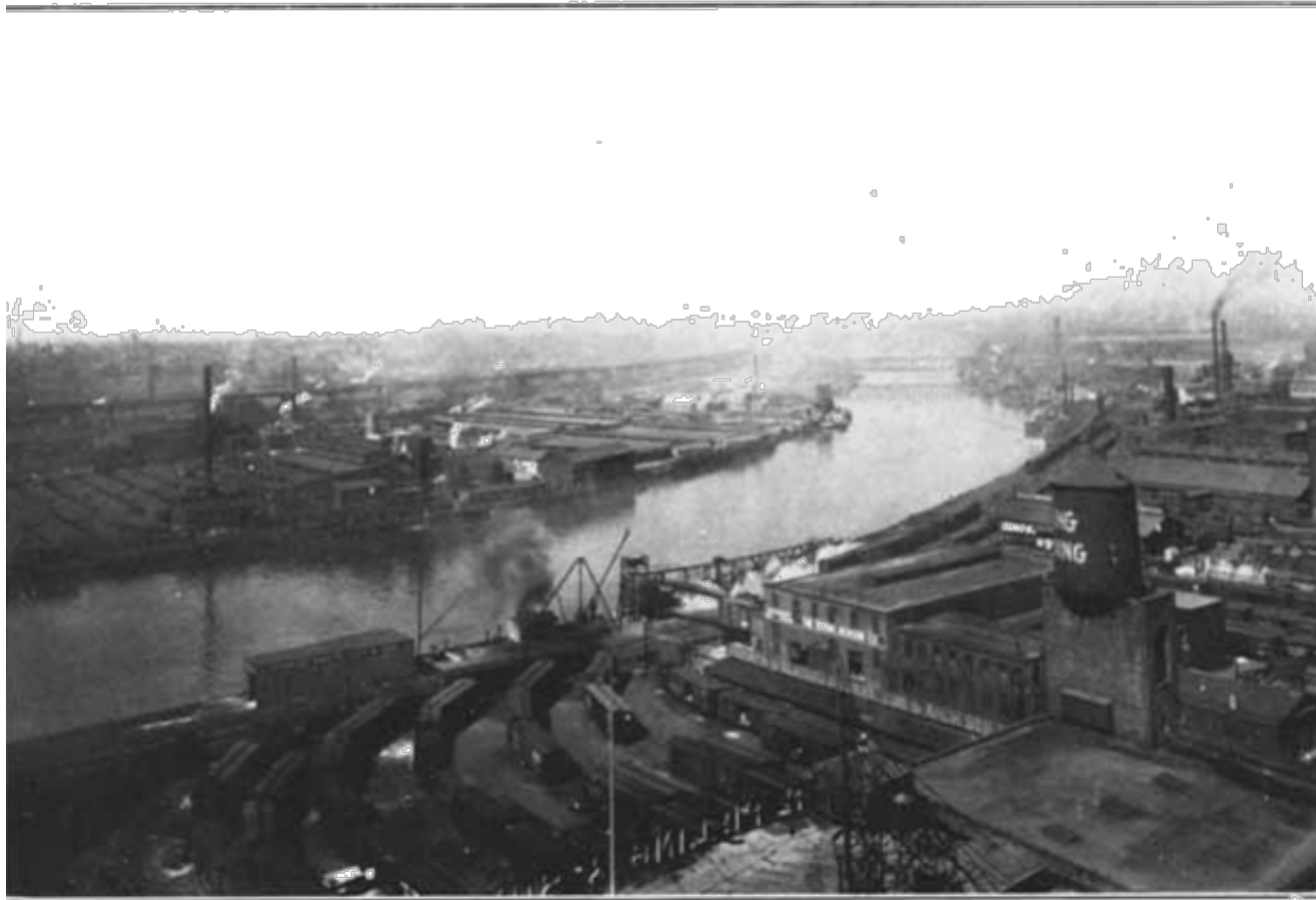
# THE TIDAL SCHUYLKILL RIVER



## The Tidal Schuylkill An Emerging Regional Center

- 8 Miles of River; 16 miles of Riverfront and Greenway
- 4 Universities
- 3 Hospitals and Health Care Industry
- Central Business District
- 27 Neighborhoods
- 4 National Historic Landmarks
- 15 Bridges/ Mass-Transit Connections





**THE SCHUYLKILL BANKS ABUSED. THERE IS NO OCCUPATION OF ANY PERMANENT IMPORTANCE, EXCEPT THE RAILROADS. THEY SHOULD RUN UNDER EMBANKMENTS. THE PLANS FOR THE SCHUYLKILL EMBANKMENTS SHOULD BE MADE NOW AND THE GROUND ACQUIRED.**





















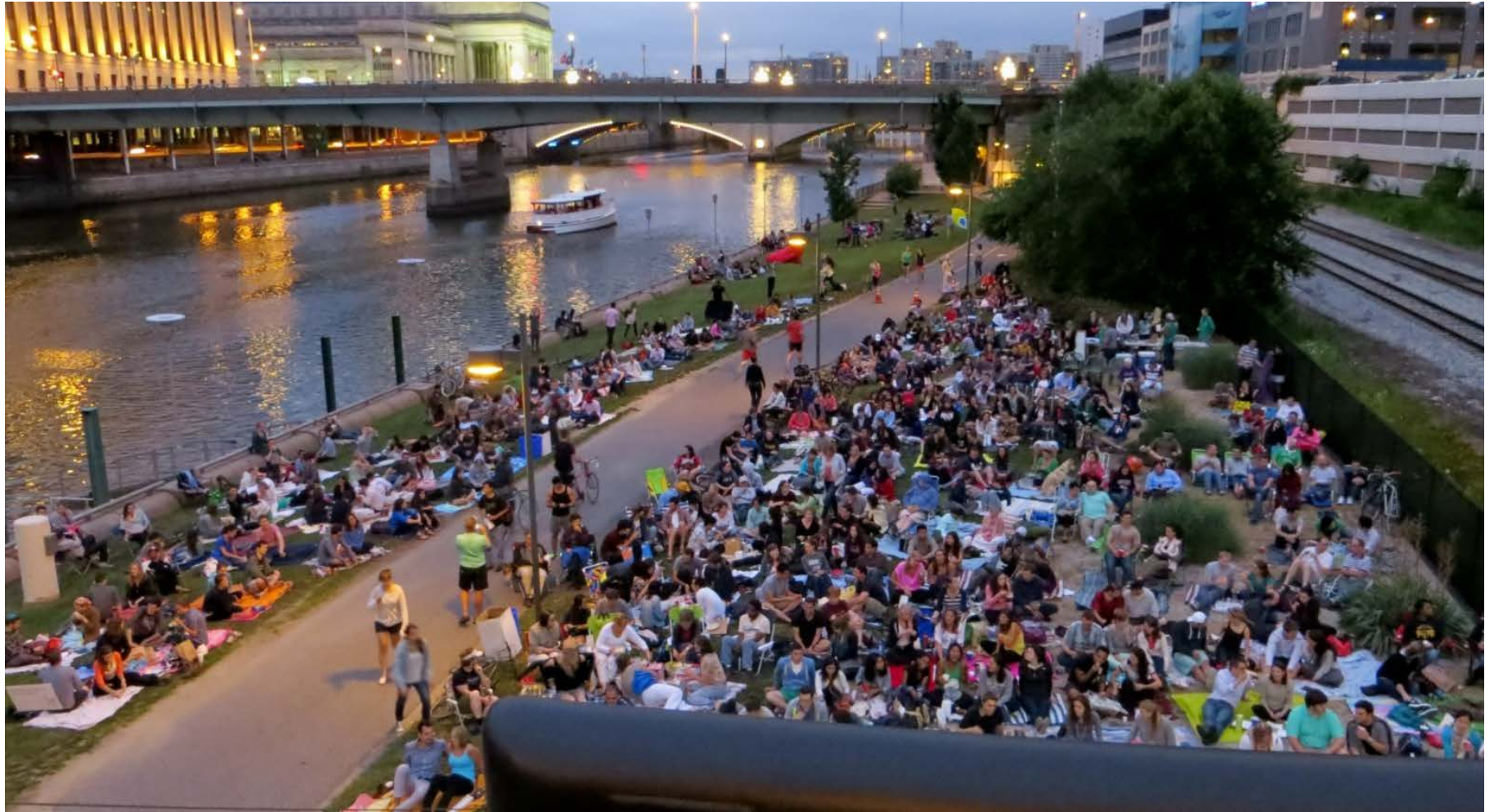

















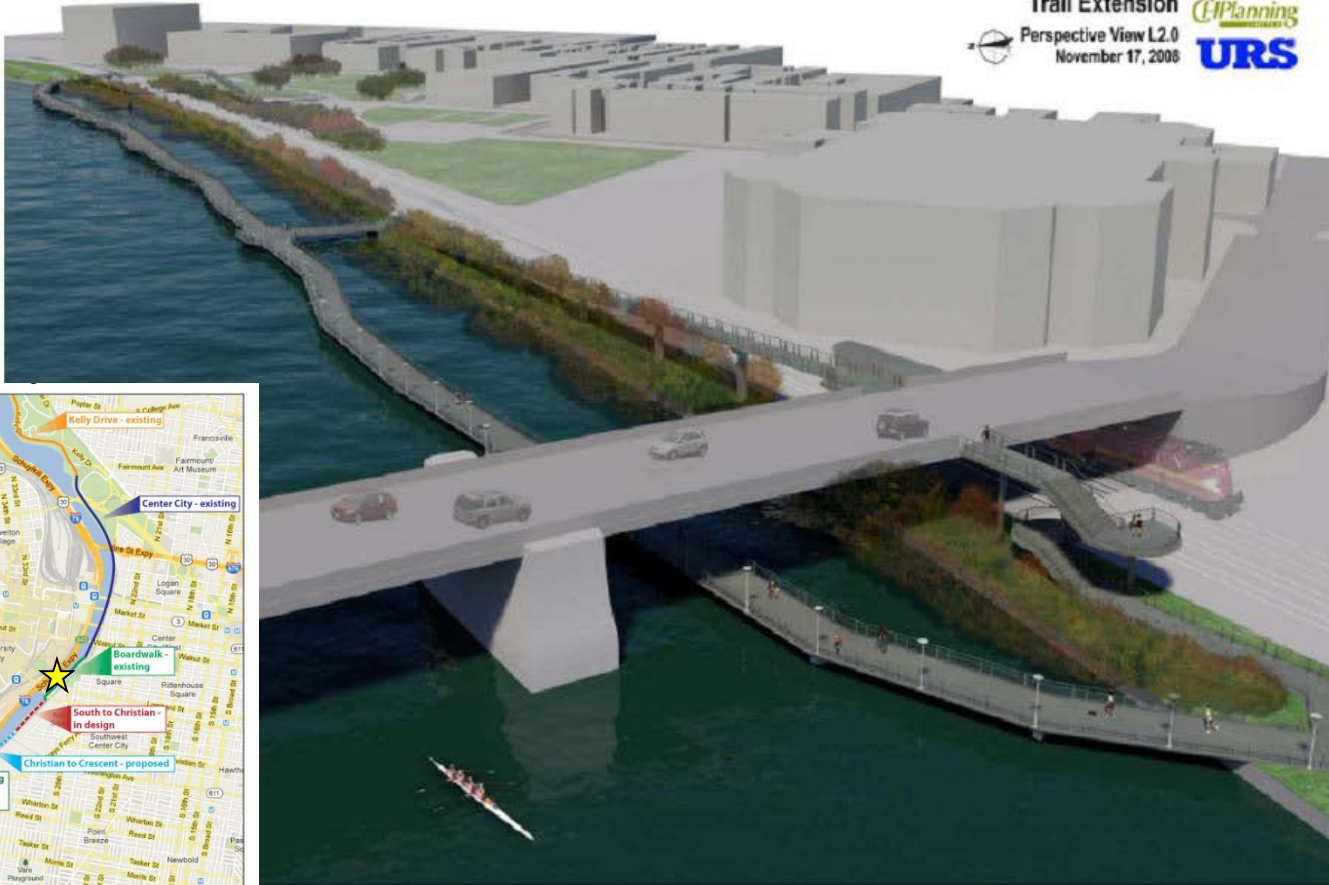






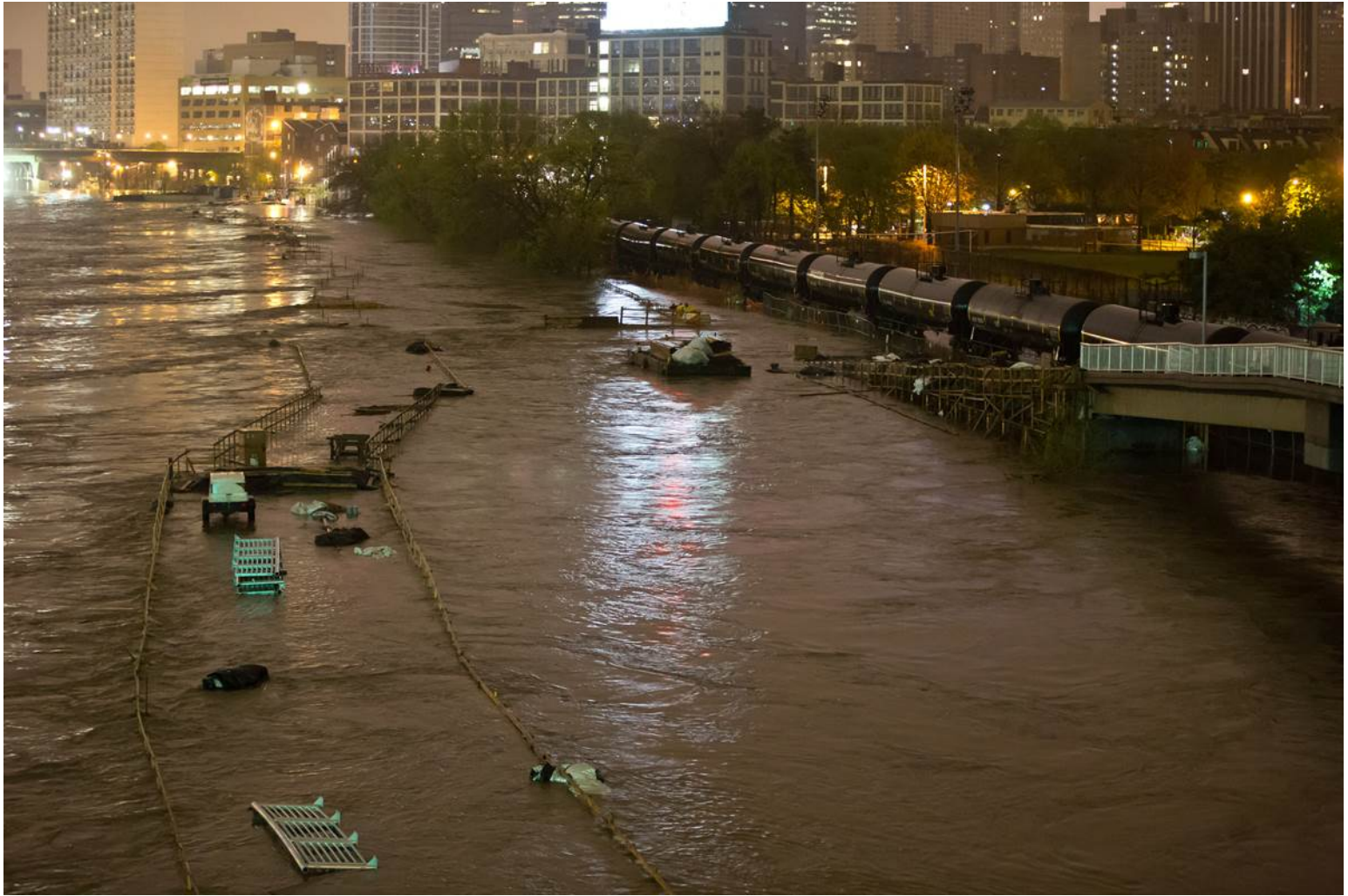
## Trail – Locust Street to South Street

Schuylkill Banks  
 Trail Extension  
 Perspective View L2.0  
 November 17, 2008



































# CONNECTION TO BARTRAM'S MILE











Small sign with red and blue markings on a tree trunk.

RISE



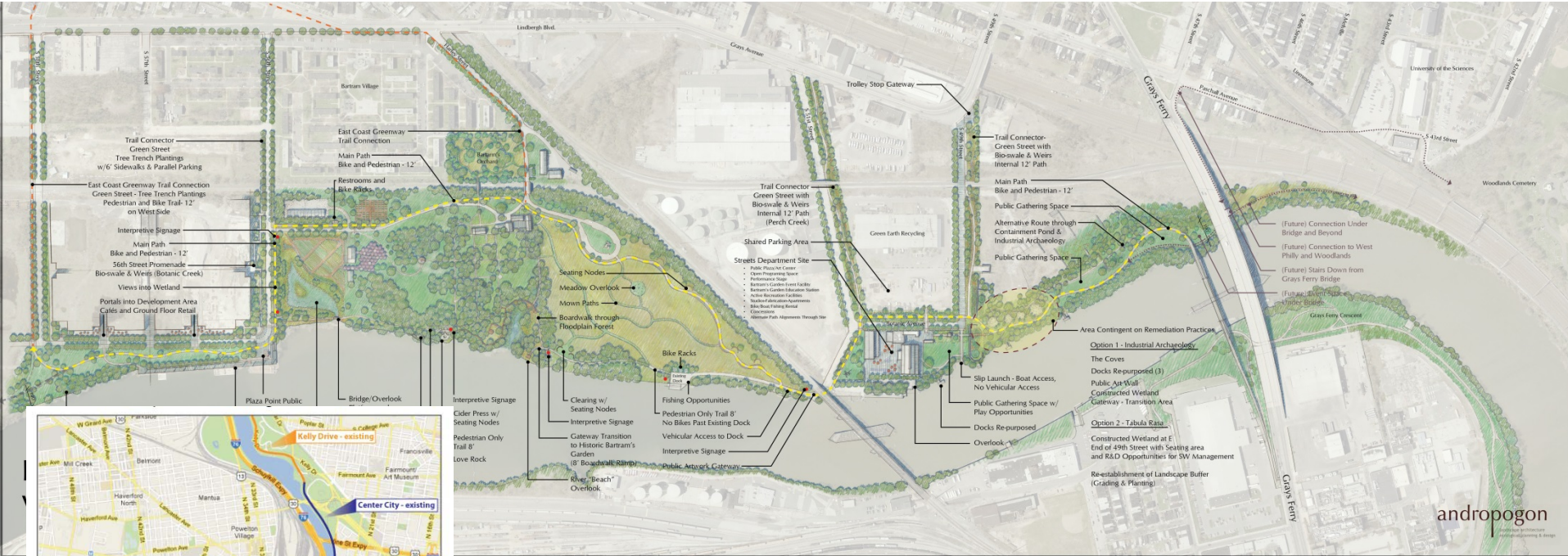








# Bartram's Mile – Visioning Phase













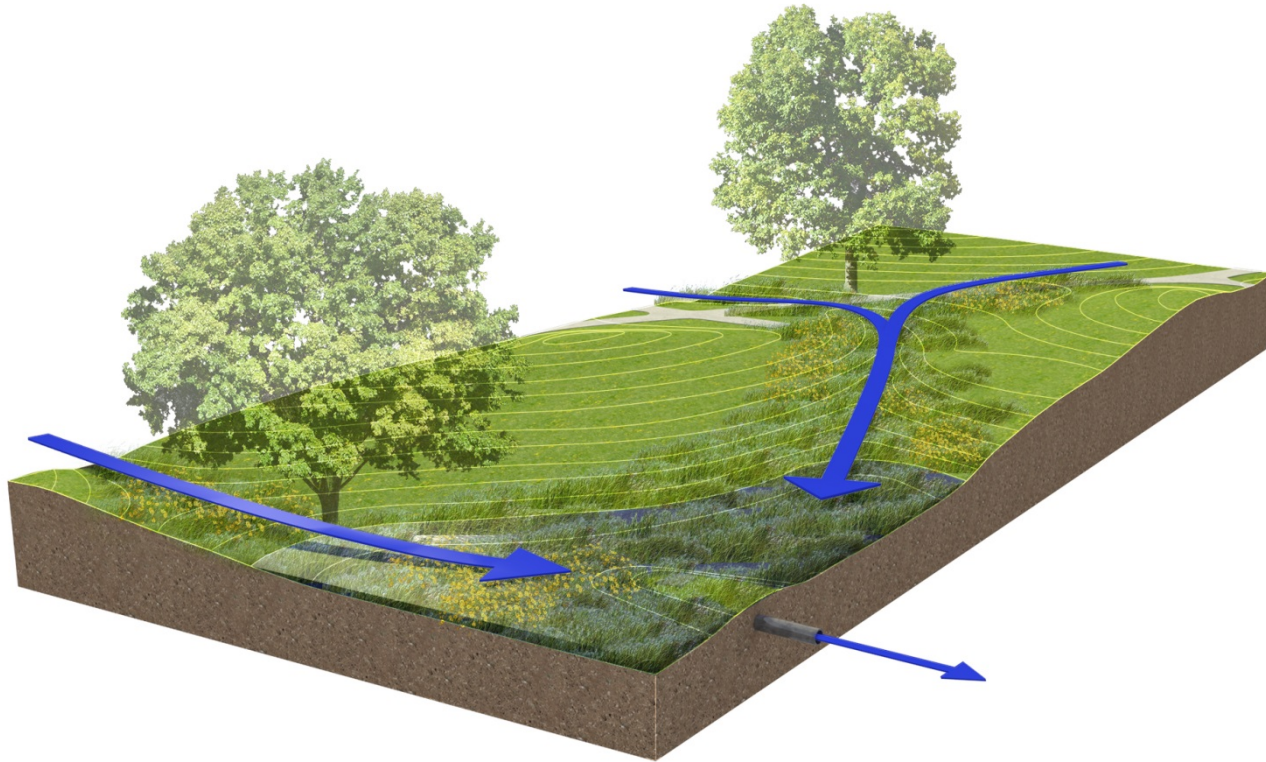




◀ PREVIOUS





















# Bartram's Garden Core – Entrance Crossing









# Bartram's South – Shade Structure 56<sup>th</sup> Street Plaza



















schuylkill  
banks