

Project Fact Sheet 2

Avionics Specialties, Incorporated Facility
Earlsville, VA

Winter 2013 – Spring 2014

Introduction

This second Project Fact Sheet has been prepared for the Avionics Specialties, Incorporated (Avionics) Facility to provide an update since the first Project Fact Sheet was released in the Summer 2013. Since then TDY Industries, LLC (TDY) has been conducting the initial phase of the RCRA Facility Investigation (RFI) at the Avionics Facility.



Figure 1 – Location Map

These investigation activities have been, and continue to be completed under the oversight of the U.S. Environmental Protection Agency (U.S. EPA) and the Virginia Department of Environmental Quality (VADEQ). The purpose of this Fact Sheet is to provide the community with a summary of the investigation findings to date and planned future environmental investigation activities at the Facility.

Site History

The Facility is located at 3367 Earlsville Road in Earlsville, Albemarle County, Virginia, on approximately 12 acres (Figure 1). The plant was erected in 1954 and was owned and operated by Teledyne, Inc. and then Teledyne Industries, Inc. from approximately 1966 to 1992. Teledyne Industries, Inc. sold the business and assets to Avionics Specialties, Inc. in 1993. Teledyne Industries, Inc. was a predecessor of TDY Industries, LLC (TDY). Avionics Specialties, Inc. closed the plant in 2010 and it has remained inactive. Historically, the plant served as an aircraft instrumentation production facility.

Environmental Investigations

Avionics Specialties, Inc. conducted an investigation of soil and groundwater conditions in the vicinity of a chemical storage building on the premises. This investigation work was conducted in preparation of the plant closure and potential sale. The work was performed under the VADEQ Voluntary Remediation Program and led to the discovery of volatile organic compounds (VOCs) in soil and groundwater both on and off the plant property. It included the collection of soil samples and the installation and sampling of groundwater monitoring wells.

The first phase of the RCRA Facility Investigation (RFI) was completed between June and August 2013. These activities included the completion of soil borings and temporary groundwater monitoring wells in potential areas of concern, the installation of permanent monitoring wells in the shallow soils and the underlying bedrock groundwater, and a preliminary assessment of surface water features within the study area. VOCs have been identified in the groundwater in two distinct zones, in the saturated soils which comprise what is referred to as the unconsolidated (or shallow) aquifer, and the underlying fractured bedrock which is referred to as the bedrock (or deeper) aquifer. The term aquifer refers to a subsurface unit of soil or rock that is water-bearing. Within the shallow and deeper bedrock aquifers the groundwater appears to be flowing in a radial horizontal flow pattern away from the plant with flow to the north, west, and southwest. Additional investigation will be required to better understand how the groundwater and chemicals are moving through the shallow and deeper aquifers. The goal of the RFI is to define the

nature and extent of chemical releases to the environment (soil, groundwater, and surface water) so that an appropriate corrective action(s) can be determined.

Upcoming Investigation Activities

TDY plans to conduct additional investigation work at and around the Facility to determine the locations of VOCs and delineate the extent of contamination. Work is planned for areas to the north, west, and south of the Facility. Figure 2 displays the preliminary sampling and monitoring locations that will be investigated during 2014. The investigation will include additional shallow soil and groundwater sampling and an assessment of nearby streams and ponds.

What Can You Expect to See?

The installation of soil borings and groundwater monitoring wells will require the use of drilling equipment. During that time, you may see drilling rigs, support trucks, and field personnel. Most of the offsite work will occur in the undeveloped wooded area that surrounds the plant property and is owned by the Charlottesville-Albemarle Airport Authority.

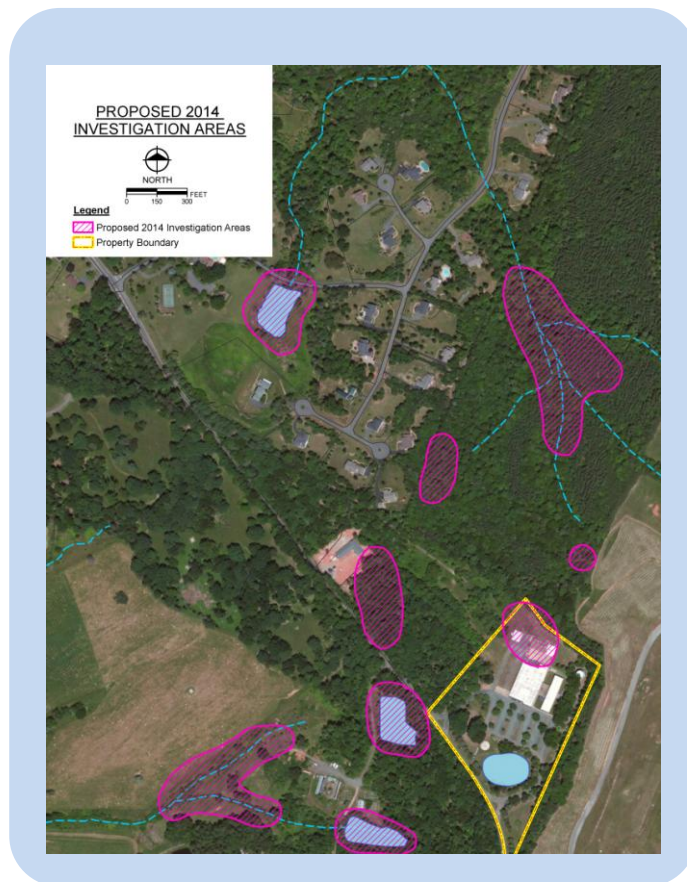


Figure 2 – Proposed Investigation Areas

The nearby Homeowner's Association will be provided notification before the beginning of drilling work. After the drilling is complete, personnel will conduct periodic sampling activities.

When Will the Work be Performed?

The second phase of the investigation is expected to begin in late spring-early summer 2014.

How and When Will the Findings be Communicated?

TDY will continue to communicate with the U.S. EPA and VADEQ on a regular basis throughout the investigation process. Findings will also be presented to the community through the issuance of additional fact sheets and the conduct of information sessions or meetings, if requested by the local community. Final reports will be submitted to the U.S. EPA and VADEQ. A copy will also be available for public review at the Jefferson-Madison Regional Library.

Please direct any questions about this project to either:

Mark Thomassen of TDY
(302) 368-7350
Mark.Thomassen@ATIMetals.com

or

Ms. Donna McCartney of the U.S. EPA
(215) 814-3427
Mccartney.Donna@epa.gov

Additional information can be found at the U.S. EPA's website for the Avionics Specialties, Incorporated Facility:
<http://www.epa.gov/reg3wcmd/ca/va/webpages/vad089027759.html>