

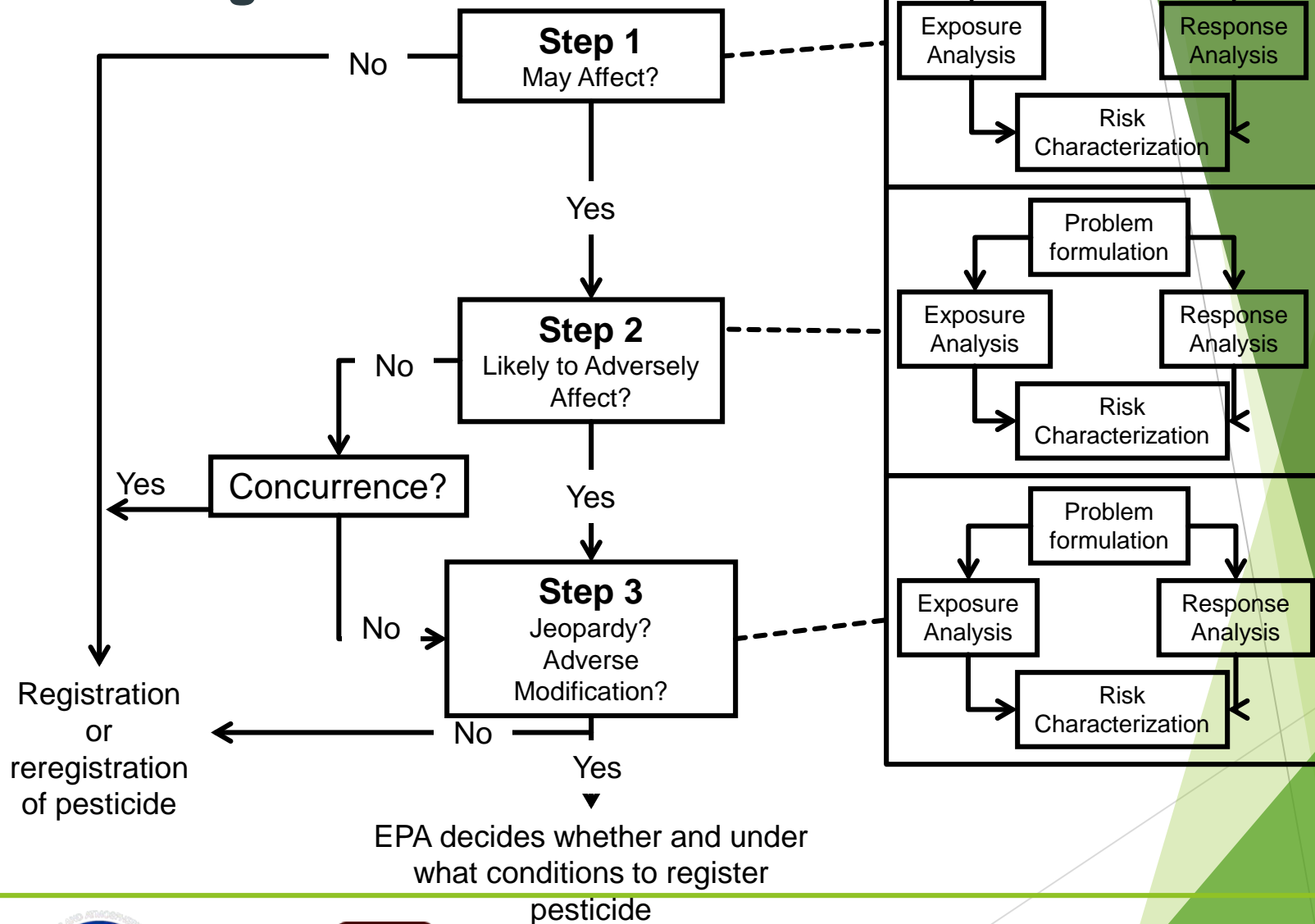
ESA Update

Anita Pease, EPA
Gina Shultz, FWS
October 21, 2015

Today's Topics

- ▶ Status of ESA-related Activities and BE Schedule
 - ▶ Accomplishments and Remaining Work
- ▶ Stakeholder Engagement
- ▶ Step 3 Biological Opinions

3-Step Approach: ESA Consultation and Ecological Risk Assessment



United States
Environmental Protection
Agency



Progress on ESA-related activities

- ▶ NAS report released April 2013
- ▶ Three interagency workshops:
 - ▶ August 2013, May 2014, and November 2014
 - ▶ Establish and refine interim measures and approaches
- ▶ Multiple stakeholder presentations
 - ▶ Four stakeholder workshops:
 - ▶ November 2013: Interim scientific approaches
<http://www.epa.gov/espp/2013/nas.html>
 - ▶ April 2014: Feedback on interim approaches
 - ▶ October 2014: Interagency presentations and more stakeholder feedback
 - ▶ April 2015: <http://www.epa.gov/espp/2015/espp-workshop.html>
 - ▶ Various Conferences and workshops (e.g., SETAC, ACS, CLA)
- ▶ Settlement agreements on ESA-litigation

Status of Ongoing Work

- ▶ First national-level pesticide consultations
- ▶ Collaborative effort among EPA, NMFS, FWS, and USDA
- ▶ Consistent with interim approaches based on the NAS report recommendations
- ▶ The three pilot chemicals are:
 - ▶ Chlorpyrifos
 - ▶ Diazinon
 - ▶ Malathion
- ▶ Draft Biological Evaluations (BEs) for three pilots released in two phases
- ▶ Final Biological Opinions (BiOps) for three pilots in December of 2017

Revised Draft BE Schedule

- ▶ December 2015:
 - ▶ Draft Problem Formulation
 - ▶ Draft Exposure/Fate Characterization
 - ▶ Draft Effects Characterization
 - ▶ Draft related appendices
- ▶ April 2015:
 - ▶ Effects Determinations (NE/NLAA/LAA calls)
 - ▶ Weight-of-Evidence analysis

Accomplishments

- ▶ Agreement on methodologies including Weight-of-Evidence approach for making effects determinations
- ▶ Reviews of registrant and open literature fate and toxicity reviews for each pesticide and associated data arrays
- ▶ Species range maps
- ▶ Biological profile information and model inputs
- ▶ Tool development

Tool Development

- ▶ Aquatic Exposure
 - ▶ Surface Water Concentration Calculator (SWCC) Updates
 - ▶ Automated SWCC ESA Batch Run
 - ▶ SWCC Postprocessor
 - ▶ Downstream Dilution
- ▶ Terrestrial Exposure
 - ▶ Terrestrial Effects Determination (TED) Tool
 - ▶ Terrestrial Investigation Model & Markov Chain Nest model (TIM/MCnest)
- ▶ Effects
 - ▶ Data Array Builder
 - ▶ Species Sensitivity Distribution (SSD) Toolbox

Stakeholder Engagement

- ▶ Early release of draft components of the BE
- ▶ Stakeholder workshop (January 25, 2016)
 - ▶ New Format

Transition from Step 2 to Step 3

The BE will provide an effect determination will be completed for each species and every designated critical habitat:

- ▶ Not likely to adversely affect
- ▶ Likely to adversely affect

Step 3 Biological Opinions

The Services will:

- ▶ Review the analyses and other information provided in the BEs
- ▶ Gather additional information related to
 - ▶ the species and their critical habitats and their status in the action area (*in progress*)
 - ▶ the environmental baseline and activities related to anticipated cumulative effects in the action area
- ▶ Conduct population-level analyses

Questions?