



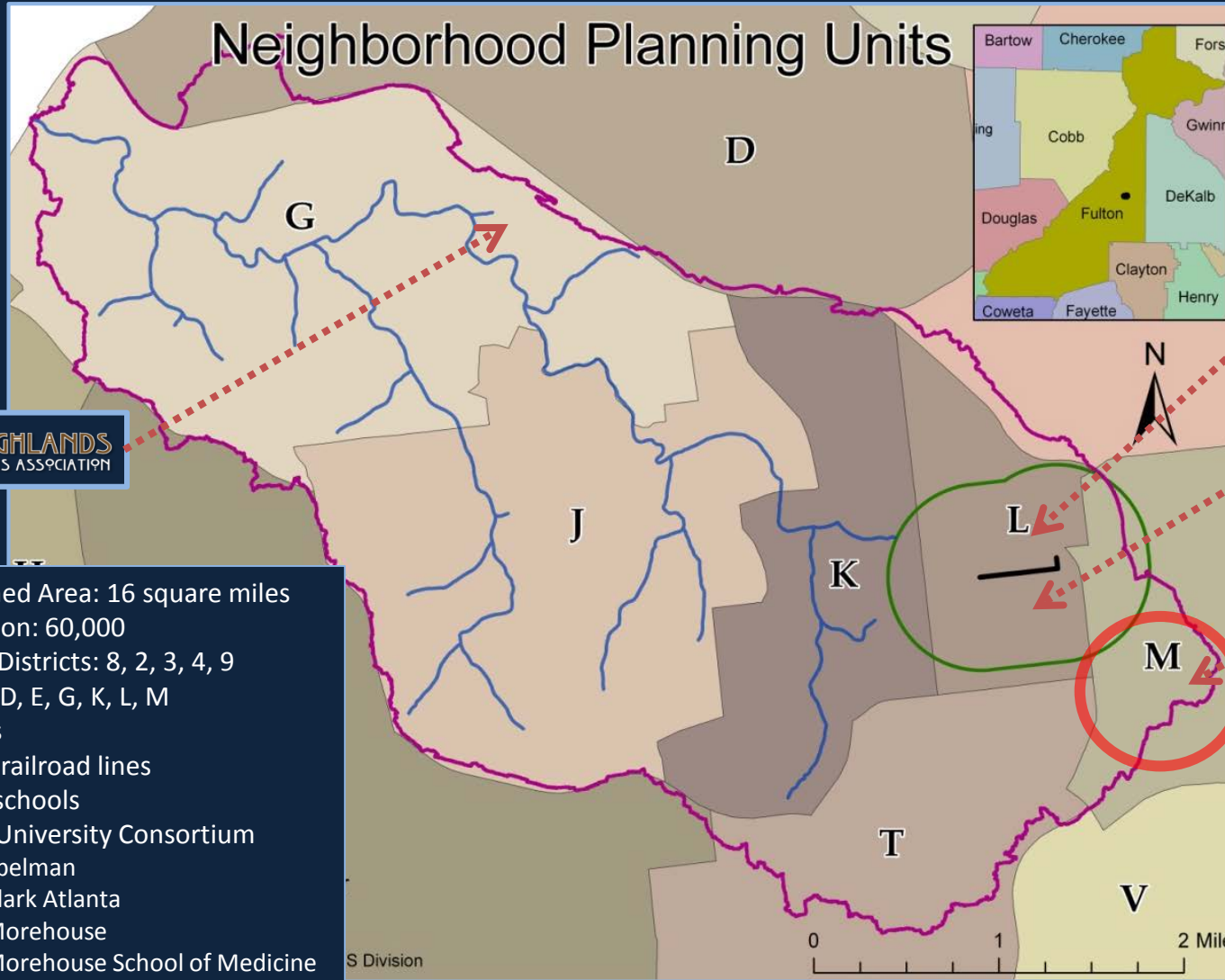
PROCTOR
CREEK

Atlanta, GA

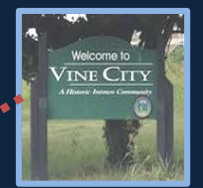
Overview

- Introductions - *By Program/Division*
- Community Profile
- Watershed Profile
- How Did We Get Here?
- What Are We Doing?
- Where Are We Going?

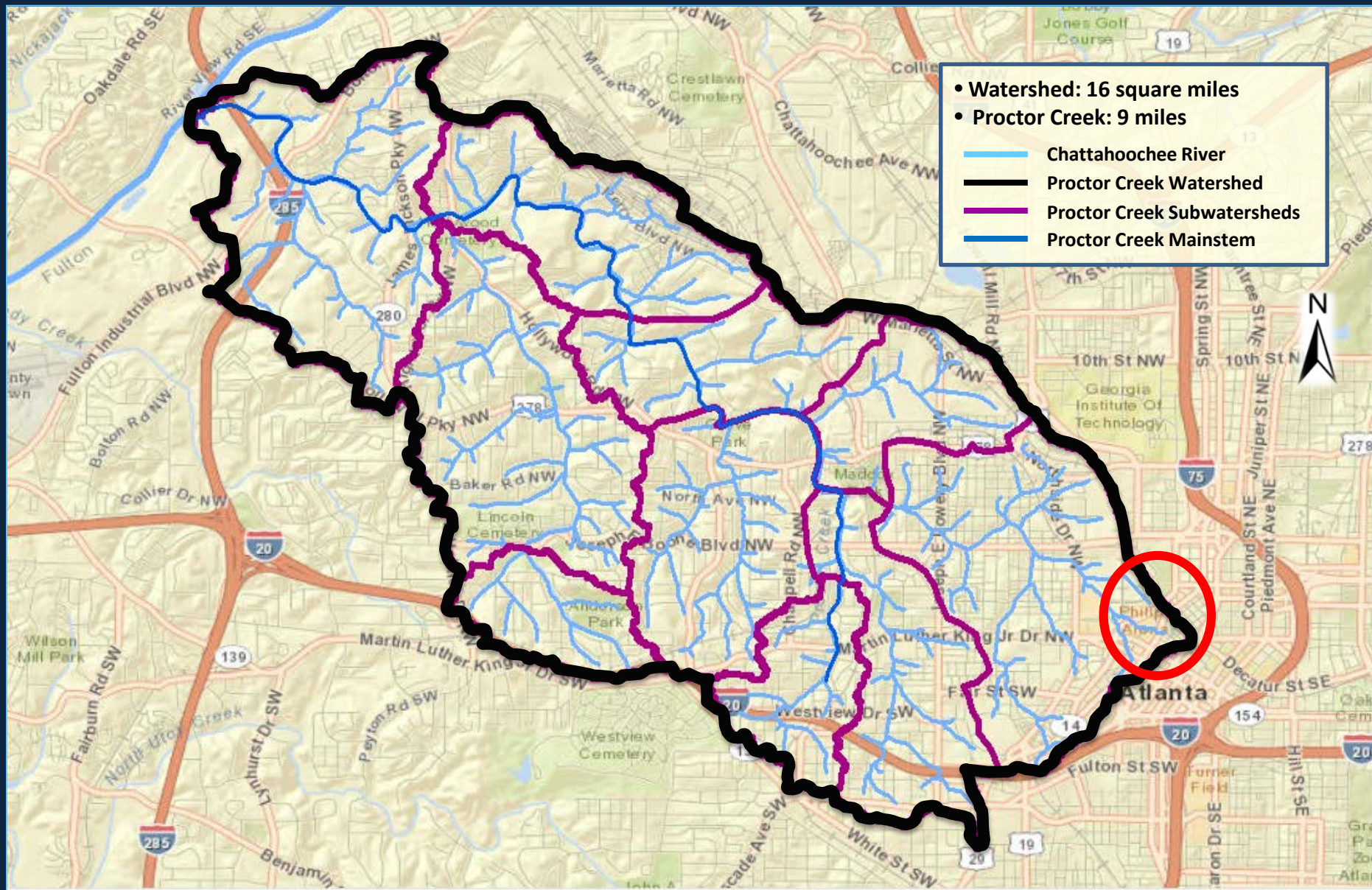
Community Profile



- Watershed Area: 16 square miles
- Population: 60,000
- Council Districts: 8, 2, 3, 4, 9
- NPU: C, D, E, G, K, L, M
- 20 Parks
- 3 major railroad lines
- 33 K-12 schools
- Atlanta University Consortium
 - Spelman
 - Clark Atlanta
 - Morehouse
 - Morehouse School of Medicine



A Watershed within a City



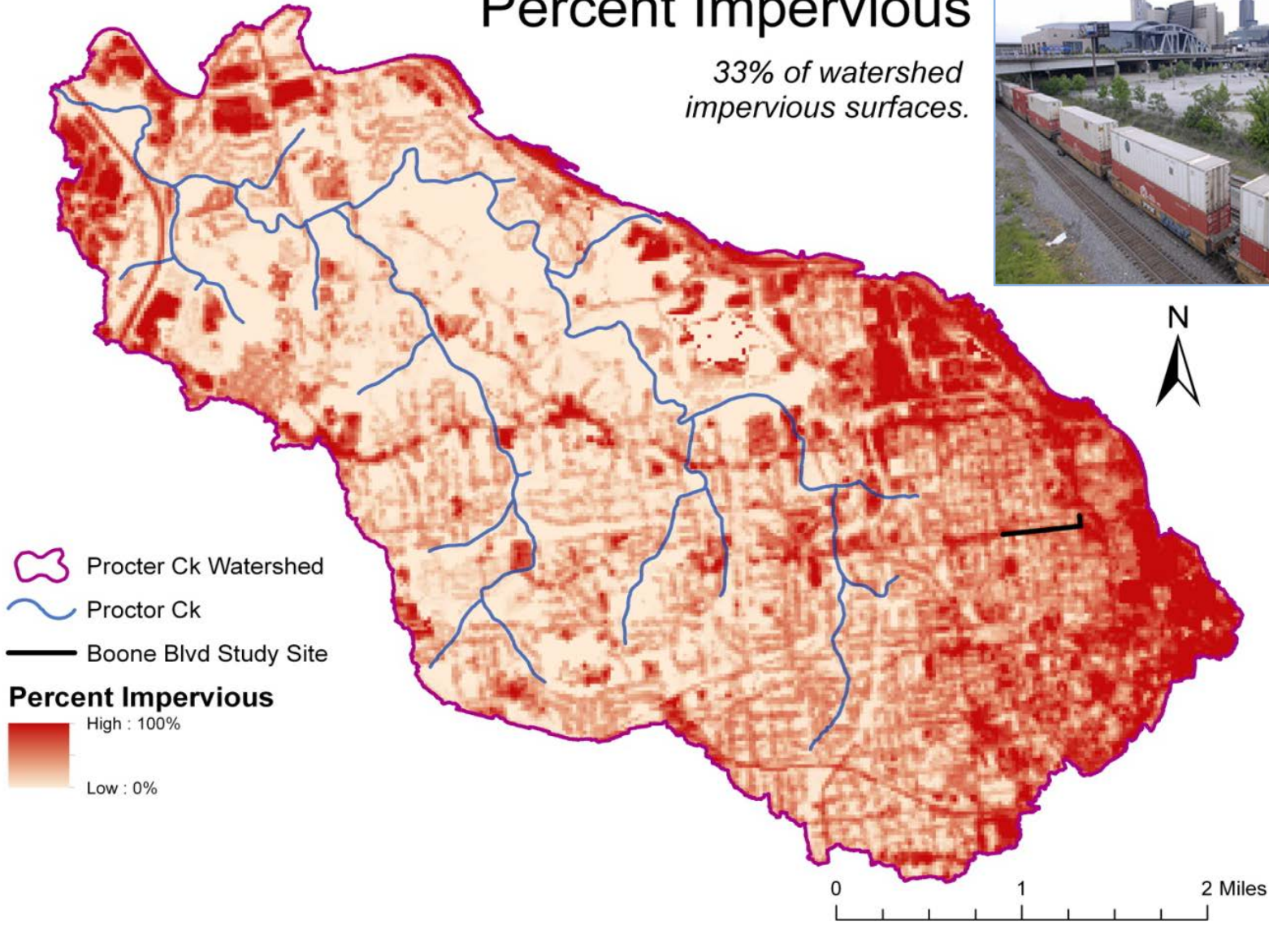
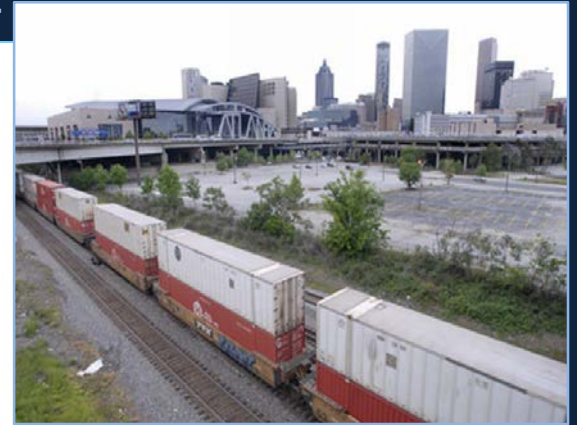
Greenspace and People-space



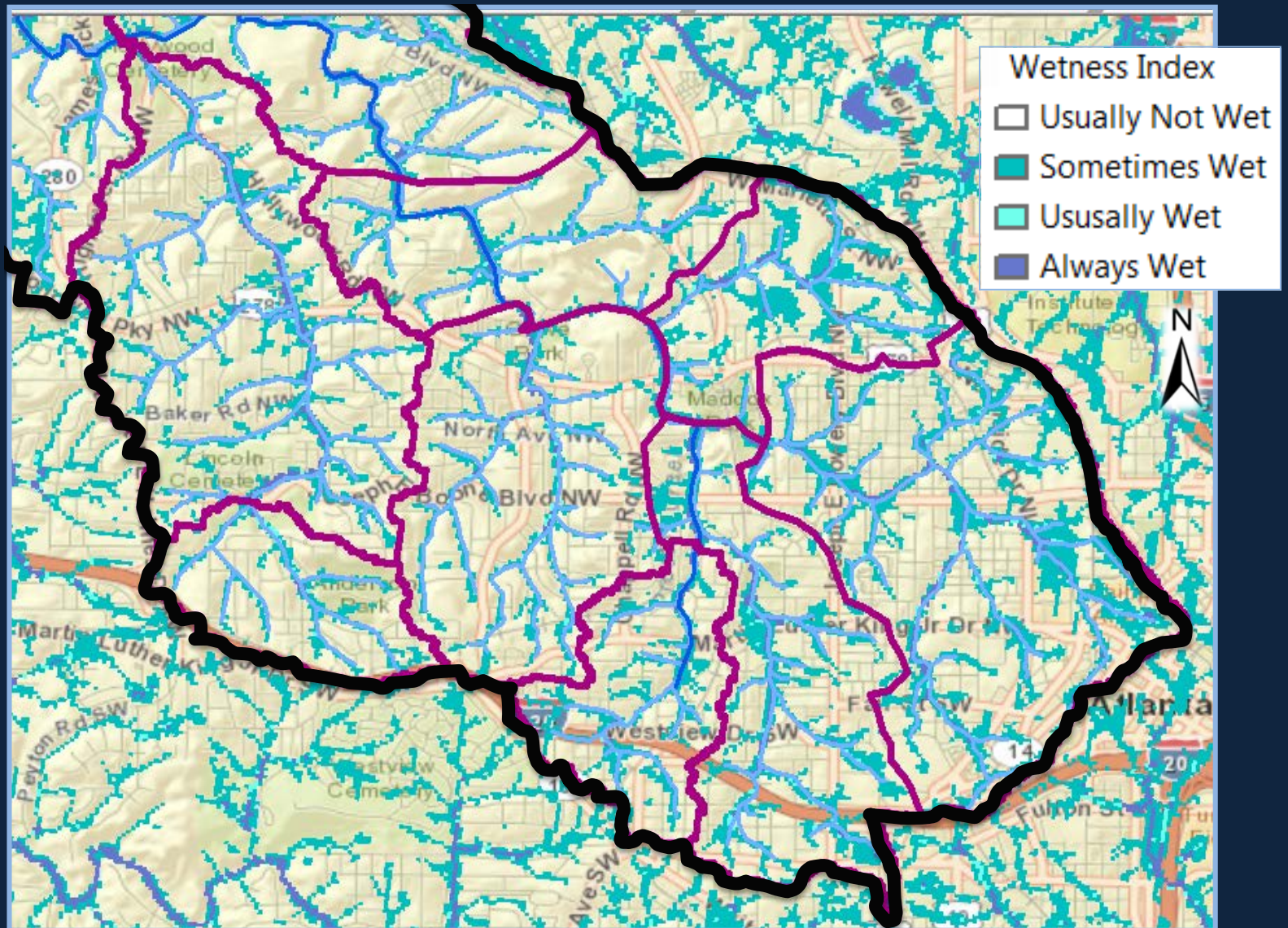
Impervious Surfaces

Percent Impervious

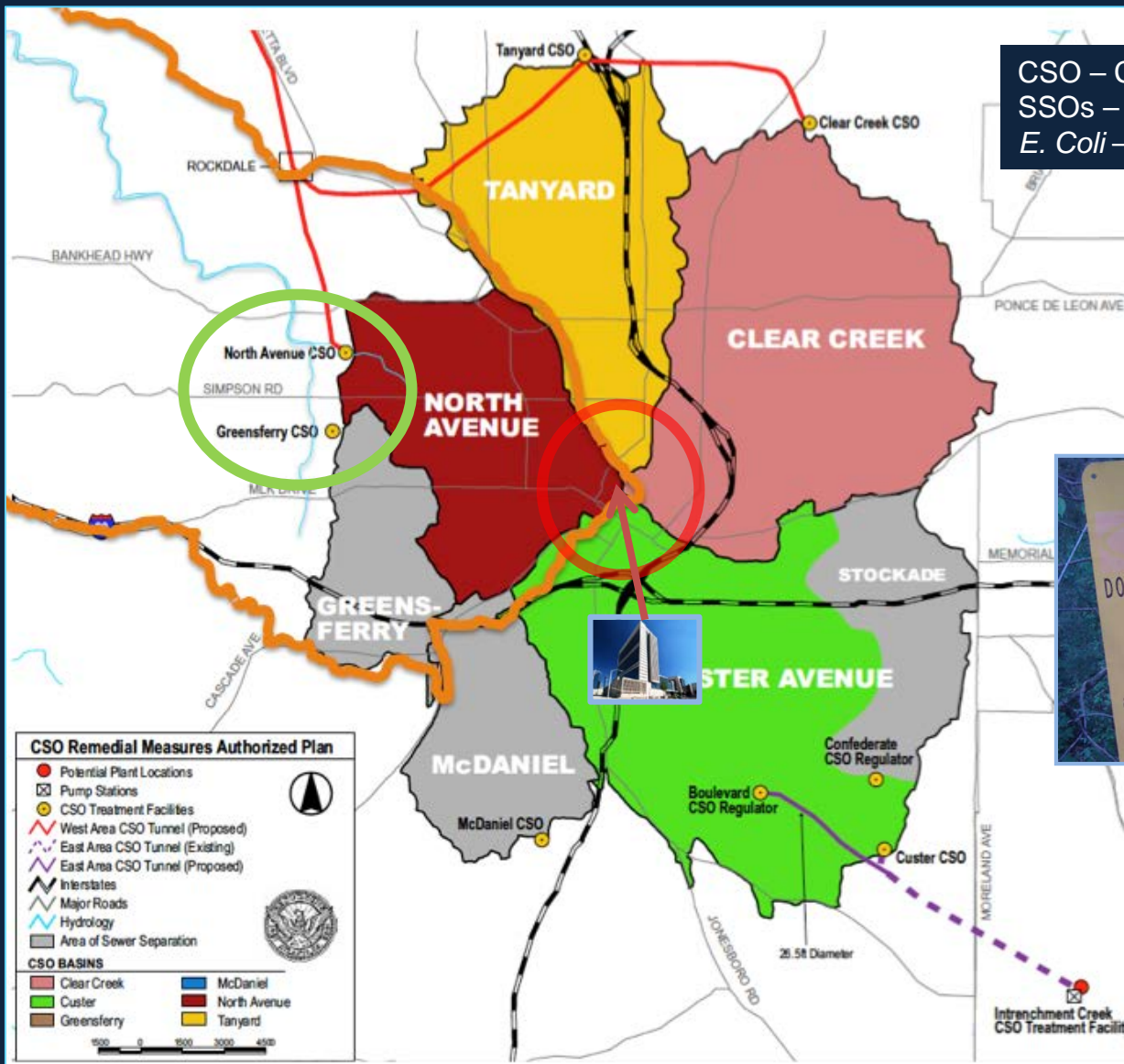
*33% of watershed
impervious surfaces.*



Headwaters Flooding Problems



CSOs, SSOs, *E. Coli*



CSO – Combined Sewer Overflows
 SSOs – Sanitary Sewer Overflows
E. Coli – indicator bacteria



Avenues to the Community

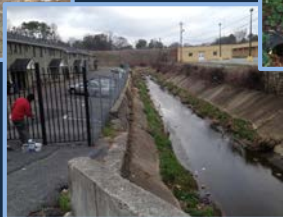
- EPA's Office of Environmental Justice and Sustainability
- EPA's Children's Health Program
- City of Atlanta Brownfields Community Engagement Meetings
- Emory University's HERCULES Stakeholder Advisory Board
- Proctor Creek Stewardship Council
- Groundwork Atlanta Steering Committee
- Community-building Coalition of Northwest Atlanta (CCNA)
- West Atlanta Watershed Alliance and Chattahoochee Riverkeeper
- Joint Community – Urban Waters Federal Partnership Meetings



Atlanta Magazine Groundbreakers Award Ceremony, November 2013

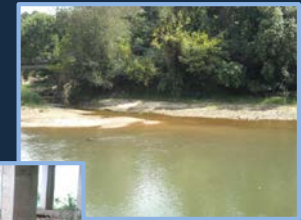
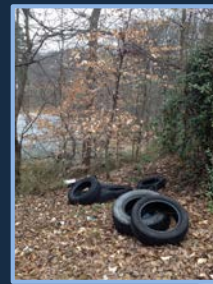
Community Concerns

- Flooding in Headwater Communities
- Indoor Air - Mold/Mildew/Asthma
- Raw Sewage Exposure After Storm Events
- Mosquito and Rat Infestations
- Illegal Tire Dumping
- No Access to Creek
- Transportation/Mobile Emissions
- Lack of Funding for Community-Driven Projects
- *Abandoned Properties & Houses*
- *Educational Opportunities*
- *Lack of Policing / Reduced Public Services*
- *Mistrust of City Government*
- *No Job Opportunities*
- *Physically Cut off from Downtown*
- *Food Desert*

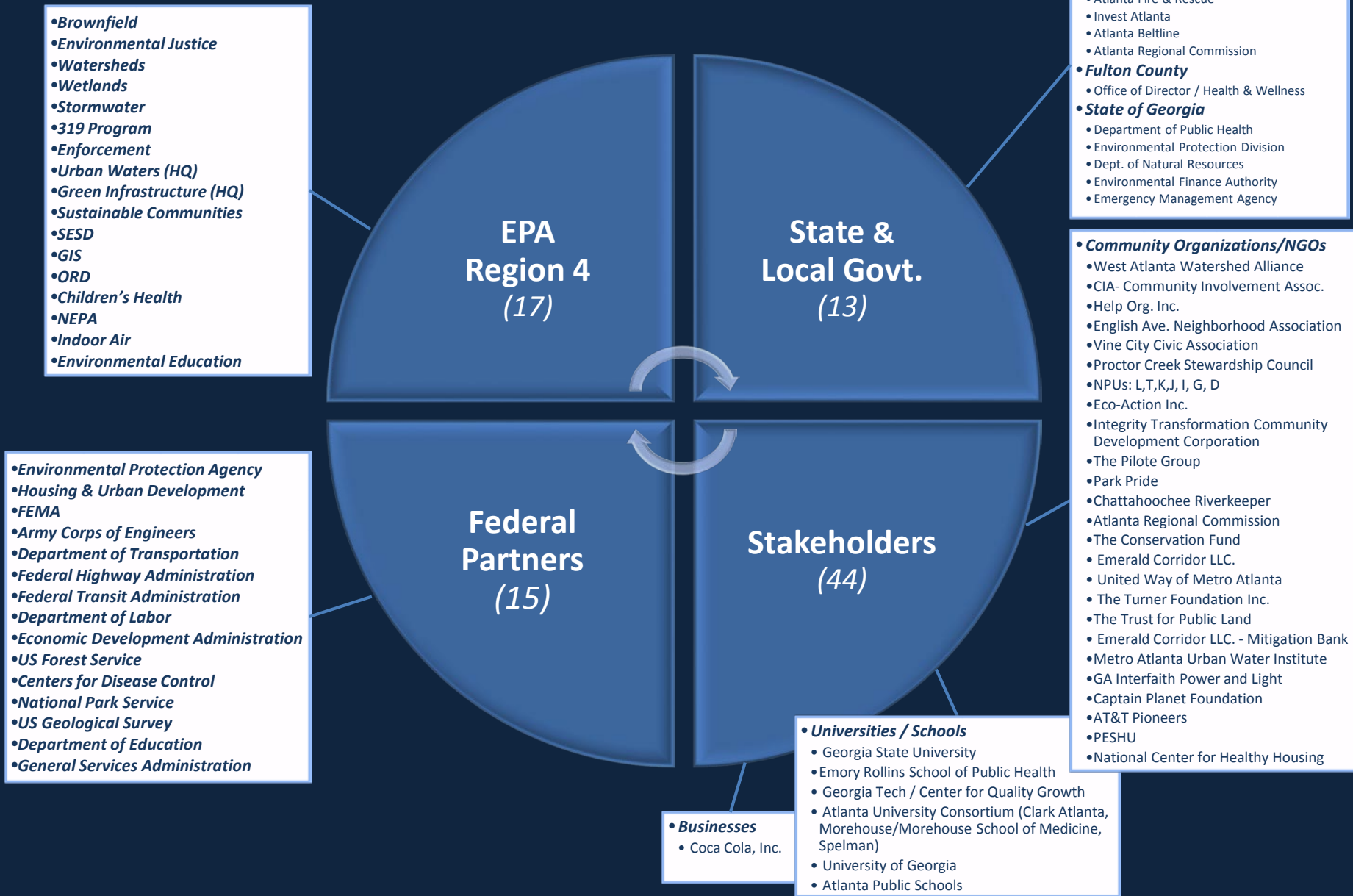


Pathways for EPA Action

- Stormwater Management/Green Infrastructure
- Indoor Air Quality Improvement /
- Healthy Housing
- *E. coli* and Fecal Coliform Exposure Reduction
- Water Quality Improvement
- Pest Management
- Solid Waste Management
- Hazardous Sites and Brownfields Cleanup
- Ecosystem Improvement
- Greenspace Preservation
- Public Health/Children's Health Improvement
- Environmental Education
- Grant/Funding Guidance
- Engagement of Other Agencies



What's Happening Now: *The Partners*



What's Happening Now: *The Projects*

- Urban Waters Federal Partnership
- 2012 Urban Waters Small Grant (*to Chattahoochee Riverkeeper*)
- Urban Waters Small Targeted Watershed Grant (*to West Atlanta Watershed Alliance*)
- Open Competition for next Urban Waters Small Grant
- Green Infrastructure Technical Assistance – Boone Blvd (*to City of Atlanta*)
- DNA Fingerprinting Project (*conducted by SESD*)
- 319 Grant for Boone Blvd Project (*GA EPD awarded to City of Atlanta*)
- Emerald Corridor Mitigation Bank (*The Trust for Public Land, Emerald Corridor LLC*)
- City of Atlanta: Consent Decree, NPDES Permit and MS4 Permit

- Health Impact Assessment - Boone Blvd Green Infrastructure (*ORD, CDC, Georgia State*)
- Health Impact Assessment – Environmental District
- Emory HERCULES – (*Emory, Proctor Creek stakeholders*)

- Brownfields Assessment Grant & Revolving Loan Fund
- Targeted Brownfields Assessment – Maddox Park
- Hometown Funds
- Environmental District
- Multimodal Passenger Terminal EIS

- Increasing Awareness – Decreasing Poor Indoor Air Quality & Asthma in K-12 Schools (*Southface*)
- Environmental Education IAG – US Forest Service
- EJ/Children's Health Key Performance Indicators
- Federal Partners Collaboration Initiative
- Atlanta Promise Neighborhood Alliance Initiative
- Atlanta Beltline
- NPS Chattahoochee River National Water Trail

Where do we want to end up?

Making a Visible Difference in an Overburdened Community

- Restore Proctor Creek and its Larger Ecosystem
- Reduce Flooding and Reconnect Stream with Floodplain
- Minimize or Prevent CSOs and SSOs
- Improve Water Quality
- Revitalize Brownfields Sites and Eliminate Exposures
- Prevent Future Exposures
- Improve Public Health and Children's Health
- Create Safe Healthy Places to Live and Work
- Increase Environmental Awareness
- Build Stronger Partnerships with the Community

Title

Talk about what the partners can provide...what do we need from them

