A photograph of the United States Capitol building in Washington, D.C., featuring its iconic white dome and neoclassical architecture. In the foreground, there are several black lampposts with white globe lights and green trees. The sky is blue with scattered white clouds.

# Introduction to Grants Management

EPA Region 6  
Clean Water Act  
(CWA)  
§106/319

# TAS Eligibility

- TAS = “Treatment as a State” or “Treatment in a Similar Manner as a State”
- **Federal recognition**
- **Demonstrate substantial government duties**
- **Demonstrate legal authority or jurisdiction**
- **Demonstrate Capability**



# Federally Recognized as a Sovereign Tribe/Nation



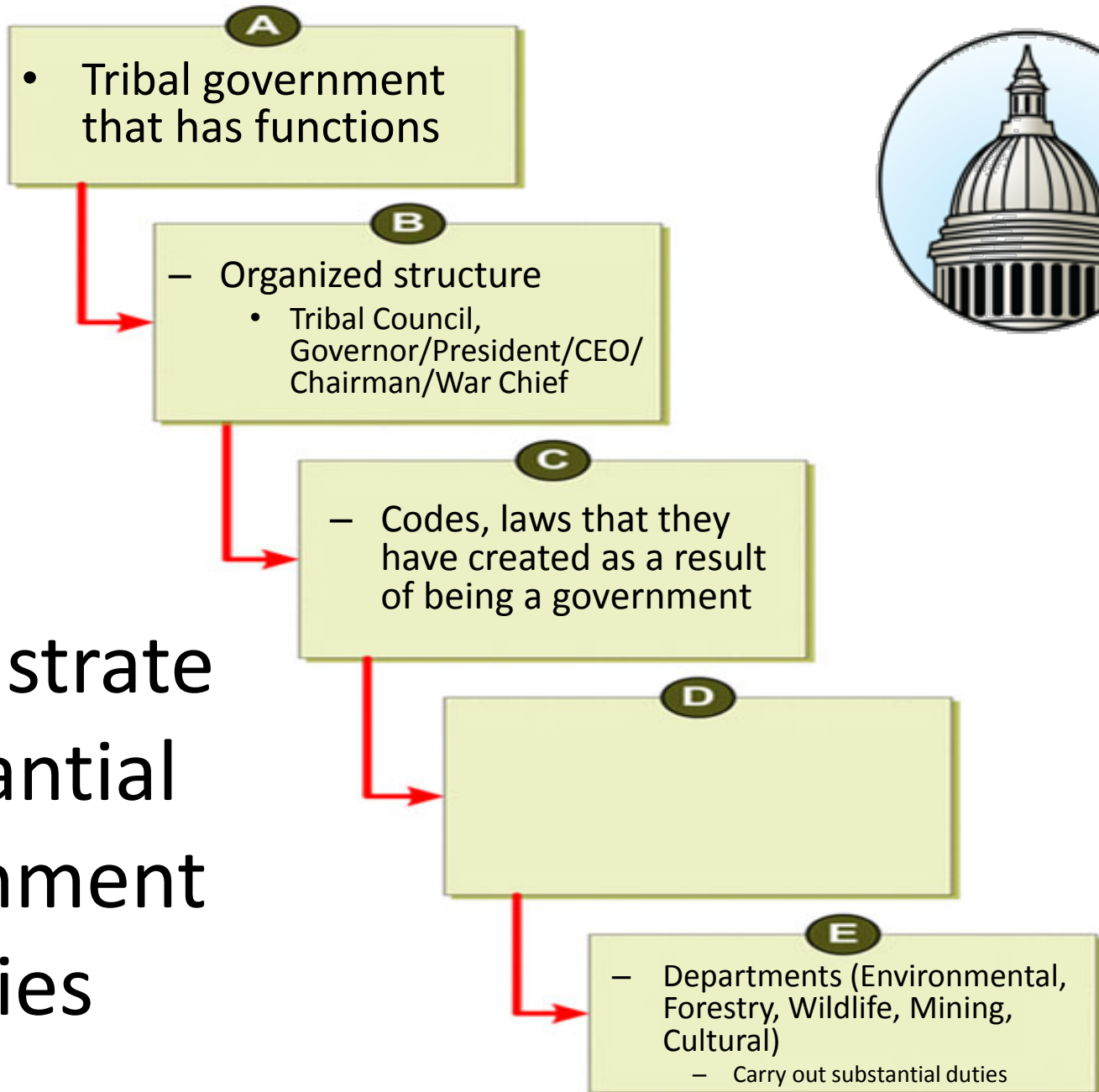
- Secretary of Interior
- Published in the Federal Register



# Demonstrate Substantial Government Duties

- Tribal government that has functions
  - Organized structure
    - Tribal Council,  
Governor/President/CEO/Chairman/War  
Chief
  - Codes, laws that they have created as a  
result of being a government
  - Departments (Environmental, Forestry,  
Wildlife, Mining, Cultural)
    - Carry out substantial duties

# Demonstrate Substantial Government Duties



# Demonstrate Legal Authority or Jurisdiction

- Show that the tribe has Legal Authority in the form of
  - titles,
  - deeds,
  - legal boundaries approved by BIA,
  - trust documents,
  - treaties,
  - memoranda of agreement,
  - maps, including aerial maps
  - waterbody locations,
  - land grants,
  - other legal agreements,



# Demonstrate Capability

- More subjective – this requirement is at the programmatic level
- Show the tribe has capability to manage federal environmental programs. Mention areas in which you have implemented and reported on other programs.
- Show you have staffing capability



# Demonstrate Capability

- Who, what are their qualifications (resume or biography), shows personnel can manage the program (working with federal government)
- Cooperative Assistance Agreement – not a grant
- We have a trust responsibility to help you manage your precious water resources.





# TAS Conclusion



- Finally, each program must demonstrate these four points in order.
  - **Federal recognition**
  - **Demonstrate substantial government duties**
  - **Demonstrate legal authority or jurisdiction**
  - **Demonstrate Capability**

# TAS for 319

- \*Assessment Report and Management Plan
  - Make a determination of where all tribal water bodies are located.
  - Make an assessment of where they are and/or the conditions of the waterbodies.
  - Then develop a 5-year management plan



**QUESTIONS?**



# Grant Management

- Application Review Process
- Project Management
- Financial Management
- Close-out process



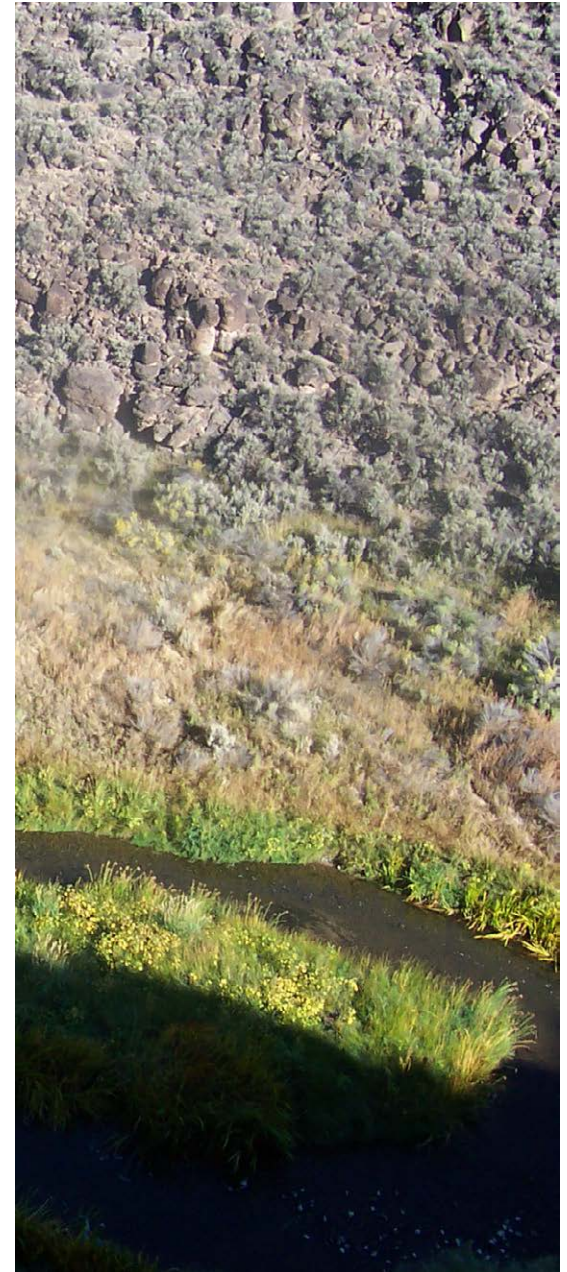
# Application Review Process



- Cooperative Agreement vs. Grant
- Region-specific
  - Some post Funding Opportunities with specific criteria
  - Some just ask eligible tribes to send in workplans
  - EPA opportunity to reflect national or regional priorities
  - Your workplan must incorporate EPA's Strategic Plan
    - Example: Must submit data to STORET via WQX
  - Must conform to guidance for the program

# Application review process cont.

- Submit Workplan or proposal
- Workplan is reviewed by Region's programmatic team
- Once approved, application materials will be needed (see website)



# Components of Funding Application

- SF 424A (signed by governor, president, or chairman) & SF 424B
- Lobbying certifications
- Contact list
- Can be accomplished online via Grants.gov, Regional Grants Management Office, or your Project Officer but check w/ Regional program staff for the preferred method



# Components of Funding Application

- Application will need to be processed within a certain period so that the award can be made
- Grantee must comply with Terms and Conditions of an award
- **Applications lead to awards, and the awards lead to dollars. The signed award allows you to draw down funds for your project as approved.**
- **Your award cannot be for more funds than you requested in the 424A.**
- **We do not extend project periods just so all monies can be expended.**





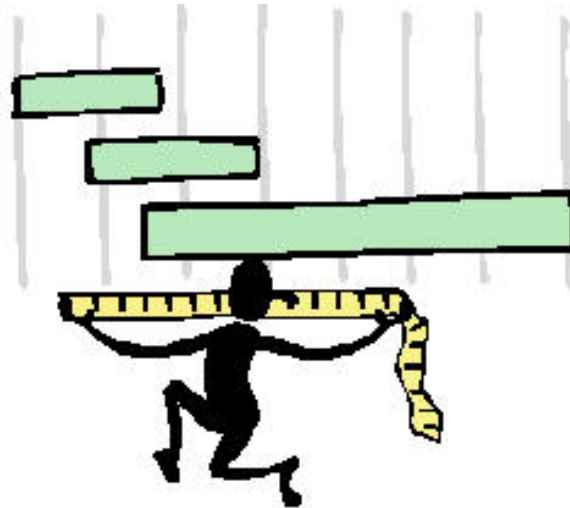


# Project Management “Getting the Work Done”

- Workplan Development And Implementation
  - Includes Goals, Objectives, Tasks, and Activities
  - Milestone and/or schedules
  - Project Budget
  - Reporting
  - Evaluation

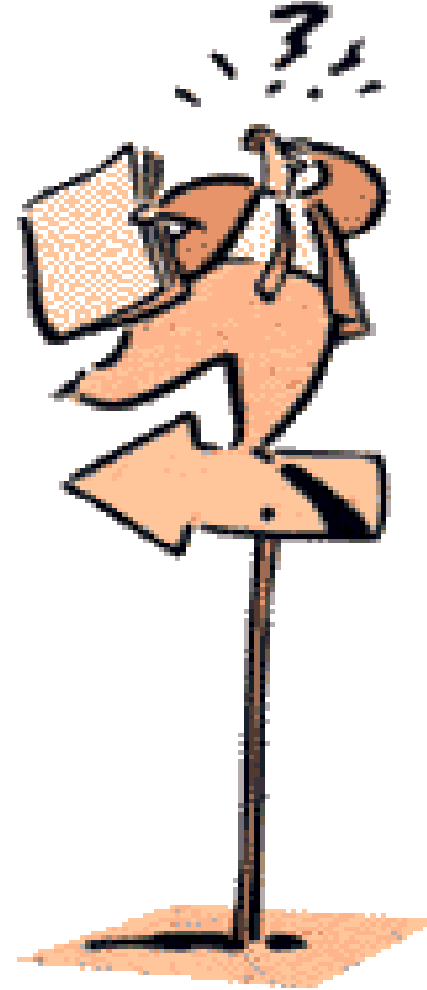
# Workplan Development and Implementation

- Identify Management Measures Or Practices To Be Implemented
- Includes Project Costs, Amount Of Award, Implementation Schedule, Milestones...
- Incorporating EPA Strategic Plan and/or Regional Priorities



# Financial Management

- Reimbursement programs
- Drawdowns
- Financial Status Reports
- MBE/WBEs
- Financial Accountability



# Close-Out

- Final Reporting
  - 90 days after expiration of project period to complete programmatic and financial reporting
  - Includes final MBE/WBE



EPA Region 6 CWA §106/319

Contacts:



George Craft

Tribal Coordinator

214-665-6684

[craft.george@epa.gov](mailto:craft.george@epa.gov)

Nikole Witt

Tribal Project Officer

214-665-2781

[witt.nikole@epa.gov](mailto:witt.nikole@epa.gov)