

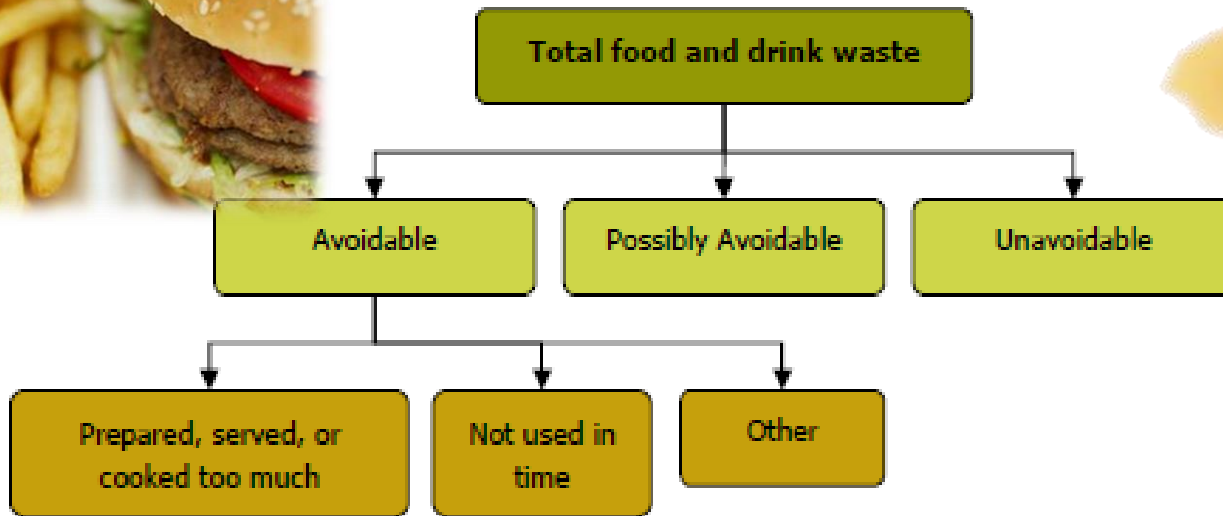


SUSTAINABLE FOOD WASTE MANAGEMENT THROUGH THE *FOOD RECOVERY CHALLENGE*

NOVEMBER 10, 2011
GREENCHILL WEBINAR SERIES

LAURA MORENO, U.S. EPA

So, what exactly is food waste?



Source: Household Food and Drink Waste in the UK (Quested and Johnson, 2009)

The Food Waste Problem

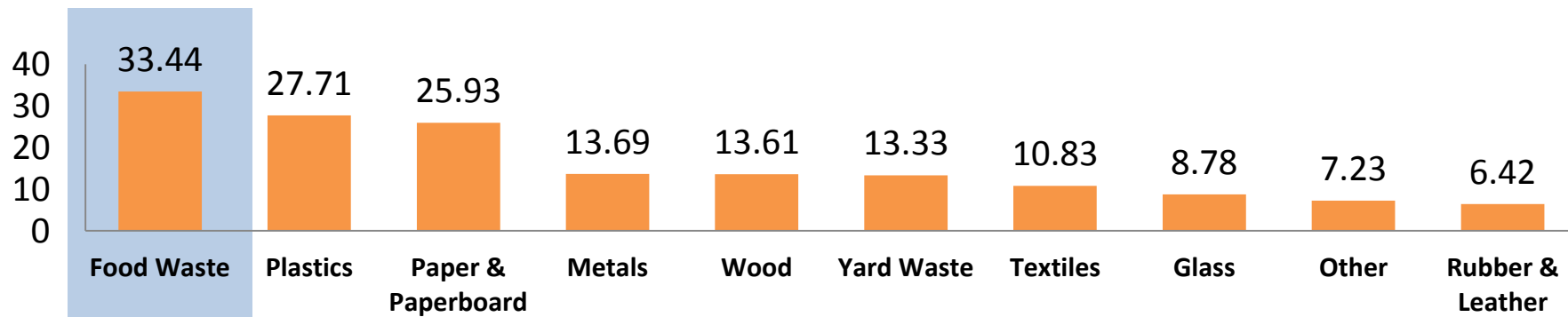
**Americans
waste
enough food
to fill the
Rose Bowl
every day.**

(Bloom 2007)



So how much food are we throwing away every year?

- **In total, just under 34 million tons** of food waste was disposed of in landfills/incinerators in 2009 (14% of the country's total waste stream)
- **Less than 3%** of food waste was recovered for recycling (composting) in 2009 (EPA, 2010)



Food waste is a problem because it impacts the economy.

- Financially, wasted food costs America **more than \$100 billion** annually (Bloom, 2007)
 - Disposal cost of municipal waste management
 - Over purchasing costs
 - Cost of lost energy

It impacts society.

- **50 million Americans**, or 14% of American households, were food insecure in 2009 (USDA).
- Food insecurity can increase the likelihood for an individual to have **major health concerns**.

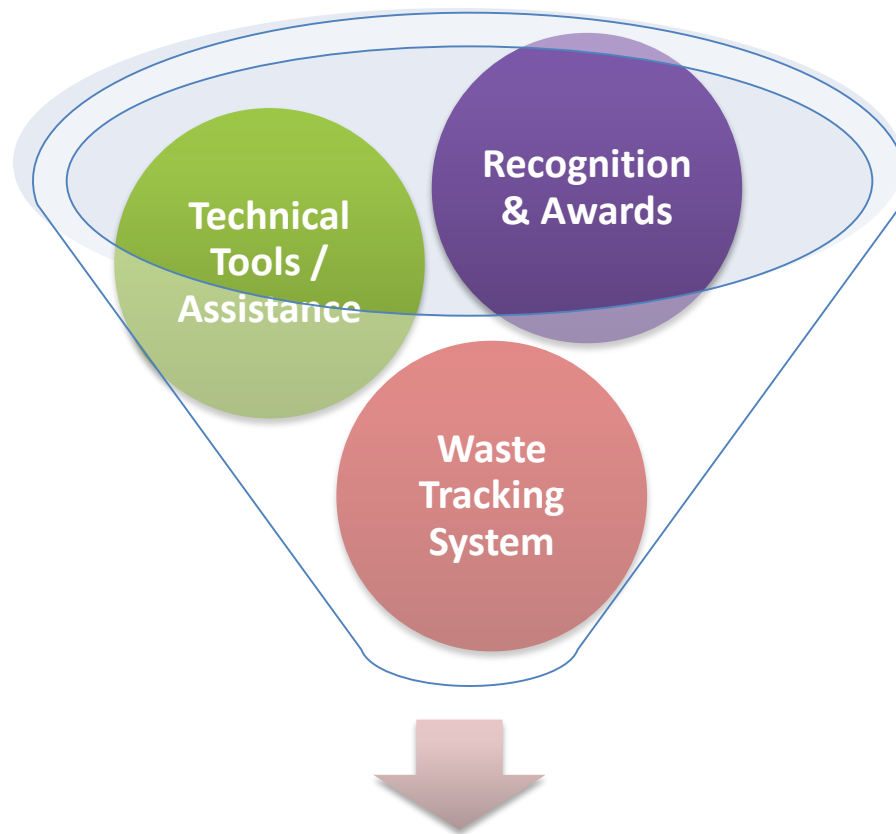


It impacts the environment.

- Food that enters a landfill produces methane, a greenhouse gas with **21 times** the warming potential of CO₂
- Food production impacts **water quality, soil productivity, and contributes to about 13% of the nation's greenhouse gas emissions.**



One tool to reduce food waste is EPA's *Food Recovery Challenge (FRC)*



Cost Savings and Brand Recognition
Supporting Your Community
Reducing Environmental Impact

The FRC is a great tool to help you reduce your food waste.

- ✓ The FRC is a FREE, simple tool.
- ✓ You'll receive free technical assistance from regional EPA staff.
- ✓ Standardized metrics allow for easy data tracking & comparison (internally & externally).
- ✓ Opportunity to learn about best management practices.
- ✓ Be recognized for your innovative work on food waste reduction & recovery.

What We Can Do For You...

- EPA tools and technical assistance
 - [WasteWise Tool](#) *Re-TRAC* for tracking waste
 - Personalized annual progress report with Climate Profile
 - Other EPA Tools
 - [Food Waste Management Calculator](#)
 - Food Waste Source Reduction Auditing Tool
 - Regular webinars on food waste related issues
 - Clearinghouse for case studies, tools, templates, BMPs, and outreach materials

What We Can Do For You...

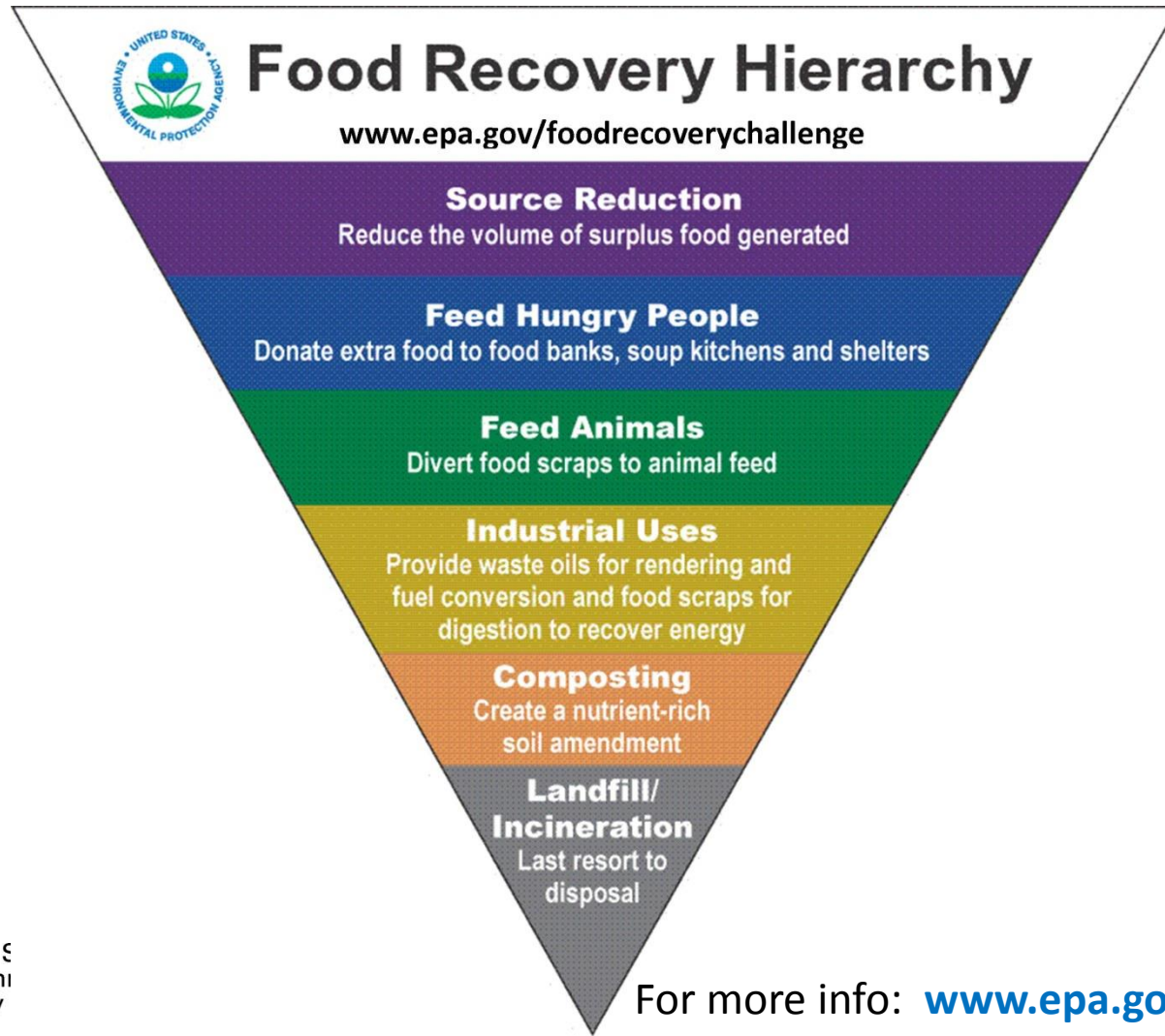
- Recognition
 - Website
 - Awards
 - Case Studies



What's In It For You?

- ✓ Reduce your costs
- ✓ Improve your image
- ✓ Feed your communities
- ✓ Protect your environment.

So how can you reduce your food waste and save money?



Source Reduction

- Reducing waste at the “source” or waste prevention
 - Reduce “over-buying”
 - Improved inventory mgmt
 - Improved storage & handling
 - Decrease prep waste
 - Decrease plate waste
- Greatest potential for **saving money!!!**



Food Donation

Doing Well by Doing Good

- In 2009, over 14% of households in the U.S. were food insecure
- Much of the food currently wasted is **edible, wholesome and safe for donation**
- Tax Benefits & Liability Protection for your donations

Tool: [Hungerpedia](#) helps match agencies in need with donors of food.

Source Reduction Success Story



- Donated **256 million pounds** of food to hunger relief (2010) = **197 million meals**
- After tracking food waste re-evaluated purchasing practices reduced **food waste generation by 30%**.



Feeding Animals

- Local farmers or zoos may use surplus food and scraps as animal feed



Feeding Animals Success Story



- Key Focus is Source reduction
- Food fit for human consumption to food banks
- Inedible leftovers go to local farms for piggery programs if available
- Final option is composting



Composting – Feed the Soil

- On-site or off-site composting
- Tip fees to composters generally less than landfills
- Creates valuable soil amendment



Composting Success Story

Massachusetts Supermarket Organics Recycling Network

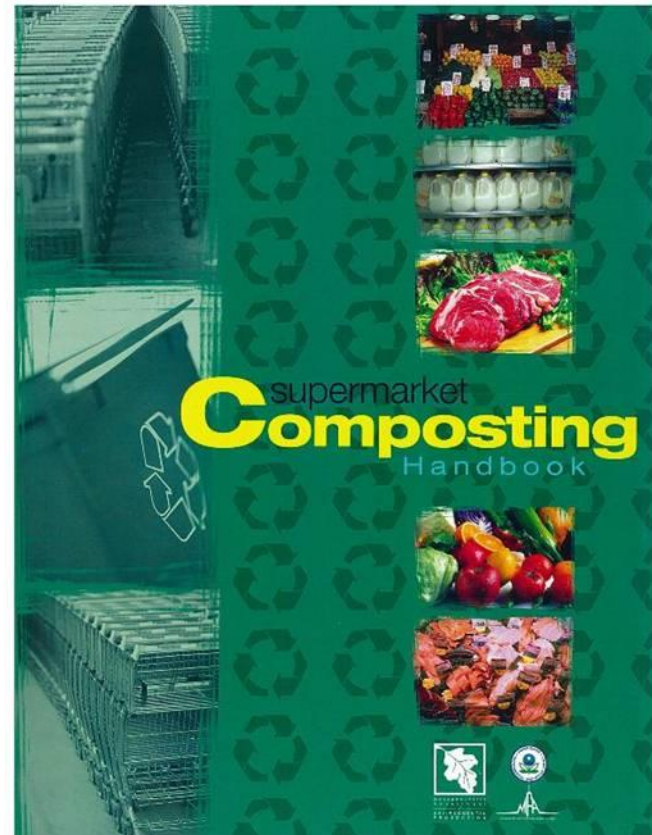
Innovative partnership between MassDEP, the Massachusetts Food Association, USEPA New England and individual supermarkets, haulers and processors **to advance organics and other recycling in the supermarket industry.**



Supermarket Composting Handbook

- ★ Letters to Mgmt.
- ★ Case Studies
- ★ Cost Benefit Worksheets
- ★ Sign templates for acceptable materials for each dept (multi-lingual)
- ★ CD for customized use

<http://www.mass.gov/dep/recycle/reduce/smhandbk.pdf>



Results to Date

- ★ **227** + Supermarkets diverting food waste in the following chains:
 - ★ Big Y Foods
 - ★ Hannaford Supermarkets
 - ★ Roche Bros.
 - ★ Shaw's Supermarkets
 - ★ Stop & Shop
 - ★ Wal Mart
 - ★ Whole Foods



Anaerobic Digestion

- Process where food is broken down in the absence of oxygen to produce:
 - Renewable energy
 - Soil amendment



Join Now!

And... take a bite out of food waste!

<http://www.epa.gov/foodrecoverychallenge>

Four Easy Steps!

1. **Assess It!** Conduct baseline food waste assessment
2. **Commit to It!** Set a three year goal with a commitment to increase food reduction/diversion by 5% in the first year.
3. **Do It!** Undertake food waste reduction and recovery activities to meet your goals!
4. **Track It!** Report annually using WasteWise tool

Contact Information



Laura Moreno

Moreno.laura@epa.gov

(415)947-4240

Ashley Zanolli

Zanolli.ashley@epa.gov

(206) 553-4425

<http://www.epa.gov/foodrecoverychallenge>

Current Participants

Thank You!

Grocery- Food Recovery Challenge Partners

- Big Y Foods, Inc.
- Hannaford
- SuperValu
- Wakefern Food Corp
- Weis Markets



Details for Joining the FRC

1. **Join Waste Wise and the Food Recovery Challenge** at <http://www.epa.gov/osw/partnerships/wastewise/join.htm>
 - Make sure to choose Food Recovery Challenge when you join
2. **Conduct baseline food waste assessment** within 60 days of joining
 - Done using the WasteWise Tool (<http://www.epa.gov/osw/partnerships/wastewise/retrac.htm>)
3. **Set a three year goal** for reducing the amount of food waste reaching landfills.
 - Year One: Commit to at least a 5% increase in at least one of the three food diversion categories ([prevention](#), [donation](#), and [composting](#)), or alternatively a combined 5% increase across all three categories. If you have no data from a previous year for a category, partners may select a site-specific goal.
 - Years Two and Three: Set site-specific numerical targets based on opportunities at your facility
4. **Report annually**
 - Done using the WasteWise Tool
5. **Get Recognized!**
 - Annual awards for outstanding participants