



An Introduction to EPA's Drinking Water Mapping Application to Protect Source Waters (DWMAPS)



Katie Foreman
Office of Water/Office of Ground Water and Drinking Water
U.S. Environmental Protection Agency

Region 5 Harmful Algal Blooms Workshop
April 28, 2016

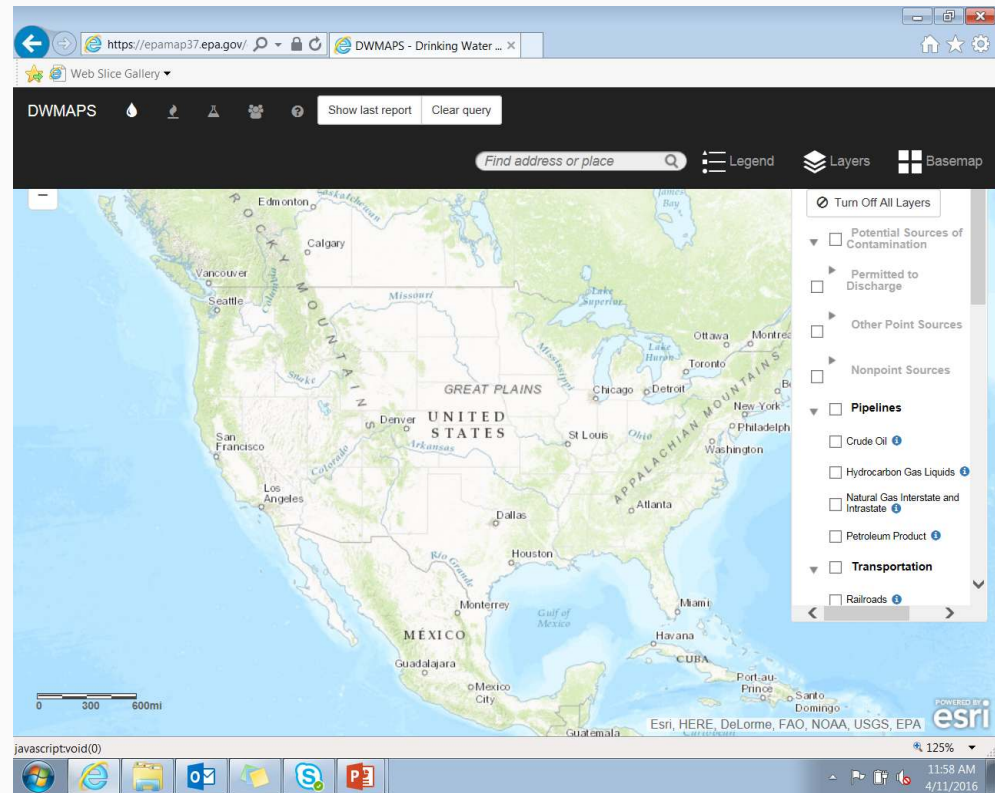
Presentation Overview

- Overview of EPA's Drinking Water Mapping Application to Protect Source Waters (DWMAPS)
- Examples of key source water-related queries
- Highlighted HAB-related applications

DWMAPS Overview



- Online mapping tool for drinking water source protection
- Integrates Clean Water Act and Safe Drinking Water Act information
 - Safe Drinking Water Information System (SDWIS)
 - Facility Registry Service (FRS)
 - EPA WATERS/ATTAINS
 - USGS



DWMAPS Uses



- View drinking water and watershed data to support source vulnerability assessments
- Identify potential sources of contamination, point and non-point
- Promote integration of drinking water protection and clean water act activities
- Identify watershed stakeholders, potential partners, and watershed projects

DWMAPS Queries



DWMAPS Show last report Clear query Find address or place Legend Layers Basemap

Drinking Water Mapping Application to Protect Source Waters (DWMAPS)

Where Do I Start?

- Who Supplies My Water?
- Where Are Potential Sources of Contamination?
- Is My Waterway Polluted?
- What Can I Do About It?
- Complete User Guide

Layer List

- ☒ Turn Off All Layers
- ☒ Potential Sources of Contamination
 - ☒ Permitted to Discharge
 - ☒ Other Point Sources
 - ☒ Nonpoint Sources
- ☒ Pipelines
 - ☒ Crude Oil
 - ☒ Hydrocarbon Gas Liquids
 - ☒ Natural Gas Interstate and Intrastate
 - ☒ Petroleum Product
- ☒ Transportation
 - ☒ Railroads
 - ☒ Roads, Hazardous Material Routes
- ☒ Hydrography and Watersheds
 - ☒ Catchments
 - ☒ 303(d) Listed Impaired Waters
 - ☒ Impaired Waters w/ Total Maximum Daily Loads (TMDL)

0 300 600mi

Internet Explorer

POWERED BY Esri HERE, DeLorme, FAO, NOAA, USGS, EPA

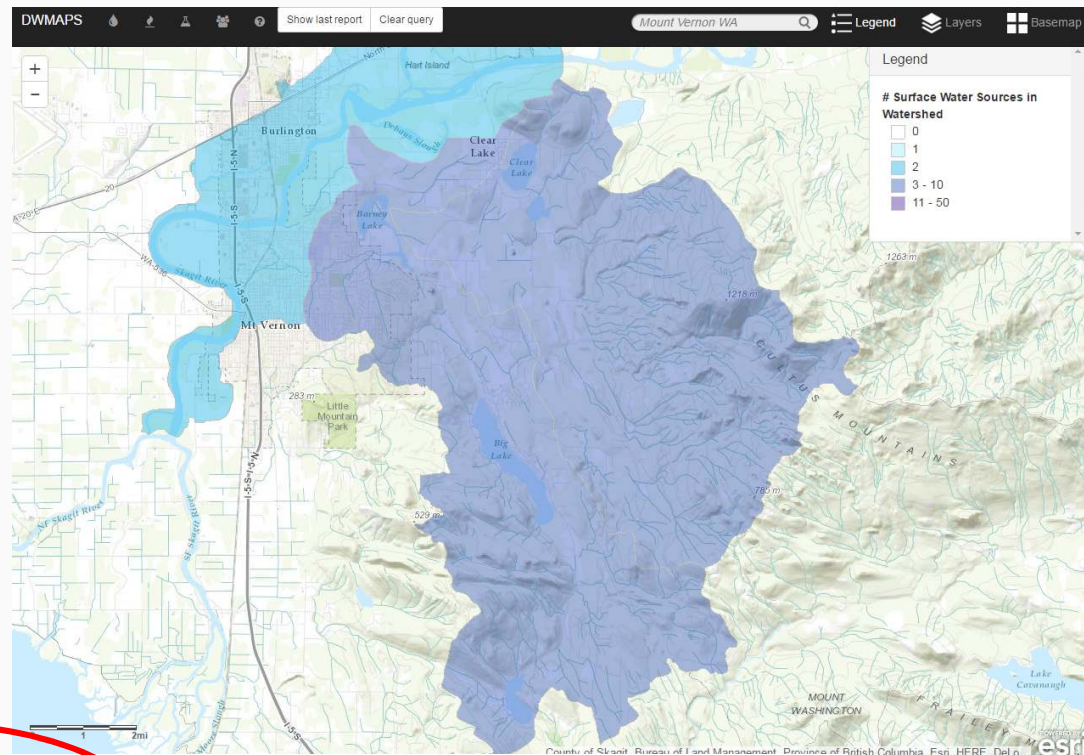


Examples: General Source Water-Related Queries

Examples: General Queries



View significance of watershed to source water protection



Watershed name*	% of watershed covered by a source water protection area	Surface water intake density	Ground water well density
Nookachamps Creek	89%	2	5

Examples: General Queries



Find drinking
watershed
information

The screenshot shows the DWMAPS web application interface. A map of Mount Vernon, WA, is displayed in the background. A pop-up window titled "Watershed Information" is open, showing details for the Nookachamps Creek watershed. The window includes a search bar, a table of watershed data, and links for more information.

Watershed Information

Point location
Latitude Longitude
48.428417 -122.305626

Search

Watershed name*	% of watershed covered by a source water protection area	Surface water intake density	Ground water well density
Nookachamps Creek	89%	2	5

Showing 1 to 1 of 1 entries

*Links are to a larger hydrologic unit that includes your watershed. Names may differ.

More Information
[Safe Drinking Water Information from SDWIS Federal](#)
[Consumer confidence reports](#)
For more information on your drinking water supplier, please contact your state agency at <http://www.asdwa.org/index.cfm?fuseaction=Page.ViewPage&PageID=794>

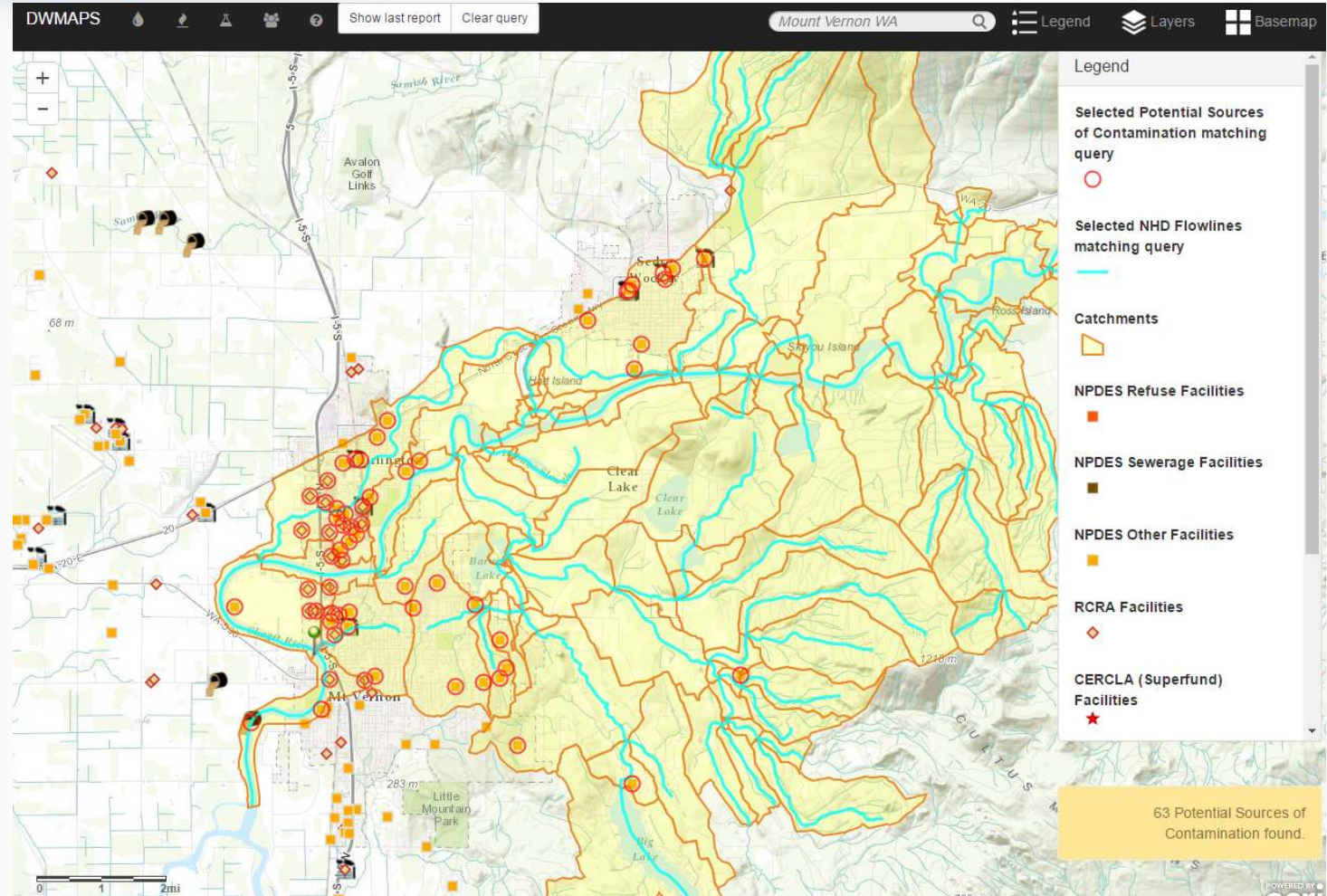
Close

1 watershed(s) found

Examples: General Queries



Find potential sources of contamination upstream



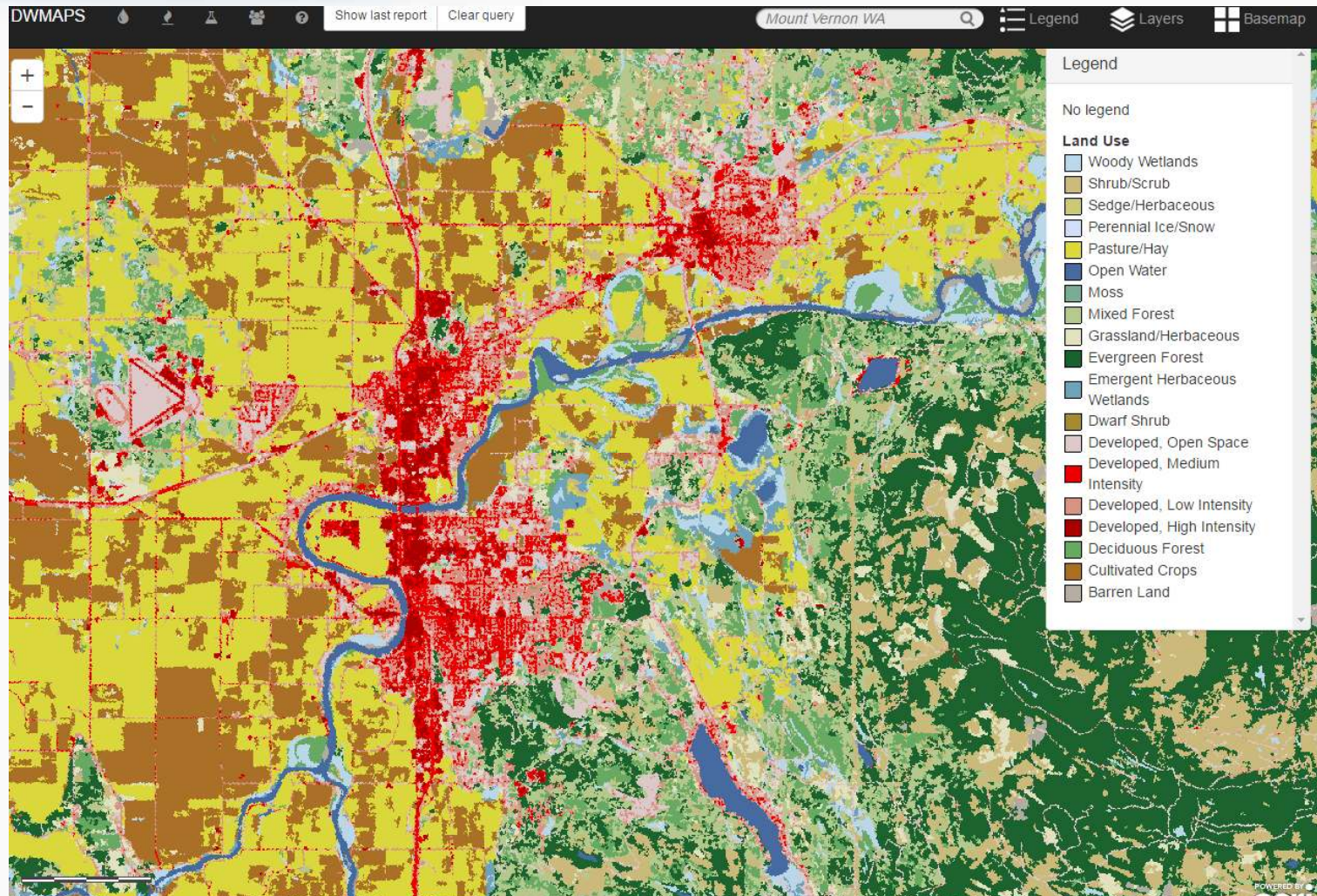


Examples: Harmful Algal Bloom-Related Queries

Examples: HAB-Related Queries



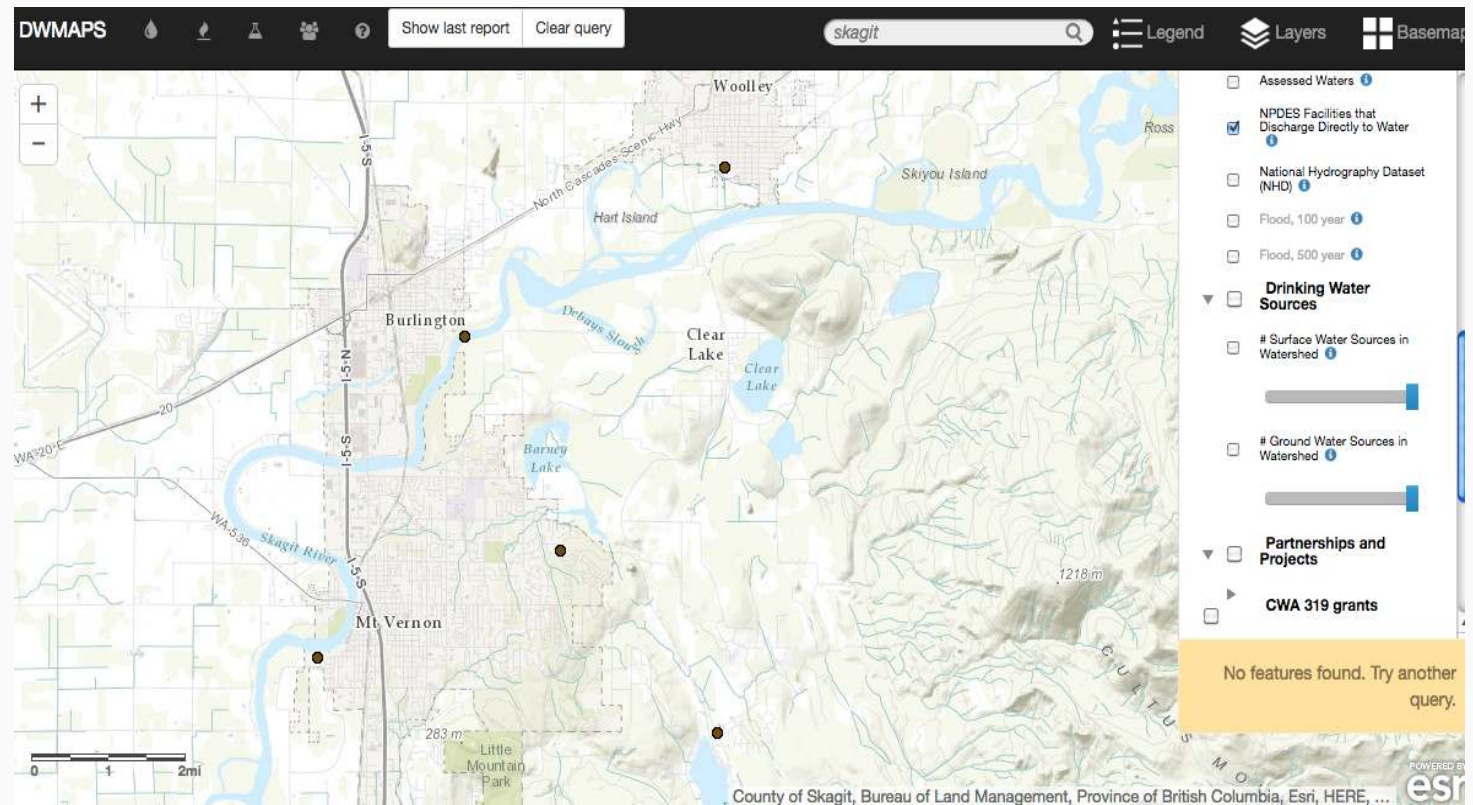
View land use/land cover in source watershed



Examples: HAB-Related Queries



Find NPDES facilities discharging nitrogen



Examples: HAB-Related Queries



View facility
compliance
reports

Skagit County
Sewer



Explore Facilities Create Maps Analyze Trends Advanced Tools Resources Help

[Log In](#) [Contact Us](#)

✓ The URL you requested has changed. You have been redirected to the new URL. Please update your bookmarks.

You are here [Home](#) » Detailed Facility Report

Detailed Facility Report

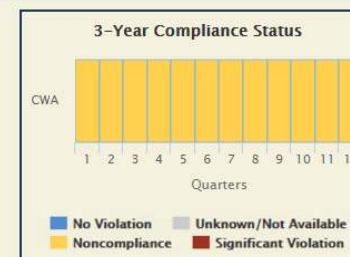
+ Expand All - Collapse All

Report Violation Report Data Error Data Dictionary Print Help

Facility Summary



SKAGIT COUNTY SEWER DIST 2 BIG LAKE WWTP
17079 STATE ROUTE 9, MOUNT VERNON, WA
98274
FRS ID: [110015547808](#)
EPA Region: 10
Latitude: 48.397744
Longitude: -122.235612
Locational Data Source: FRS
Industry: Sewerage Systems
Indian Country: N



Enforcement and Compliance Summary

Statute	Insp (5 Years)	Date of Last Inspection	Current Compliance Status	Qtrs in NC (of 12)	Qtrs in Significant Violation	Informal Enforcement Actions (5 years)	Formal Enforcement Actions (5 years)	Penalties from Formal Enforcement Actions (5 years)	EPA Cases (5 years)	Penalties from EPA Cases (5 years)
CWA	1	12/17/2013	Noncompliance	12	0	1	--	--	--	--

Related Reports

[CWA Pollutant Loading Report](#)
[CWA Effluent Charts](#)

Regulatory Information

Clean Air Act (CAA): No Information
Clean Water Act (CWA): Minor, Permit Effective ([WA0030597](#))
Resource Conservation and Recovery Act (RCRA): No Information
Safe Drinking Water Act (SDWA): No Information

Other Regulatory Reports

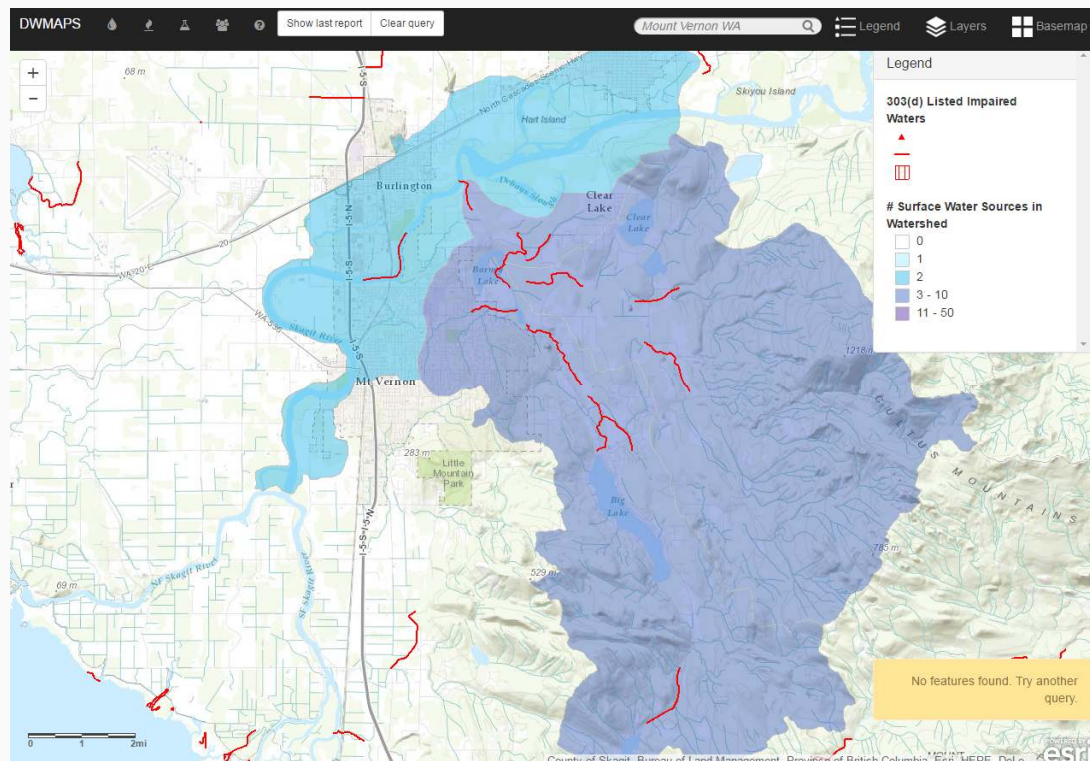
Air Emissions Inventory (EIS): No Information
Greenhouse Gas Emissions (eGGR): No Information
Toxic Releases (TRI): No Information

[Go To Enforcement/Compliance Details](#)

Examples: HAB-Related Queries



Find impaired waterbodies for HAB indicators





Questions?

Contact Information



Office of Water/
Office of Ground Water and Drinking Water

Katie Foreman
Foreman.Katherine@epa.gov

or

Bo Williams
Williams.James@epa.gov

DWMAPS website:
<https://www.epa.gov/sourcewaterprotection/dwmaps>