



CROMERR & Verify's New Request for Certificate (RFC) Module

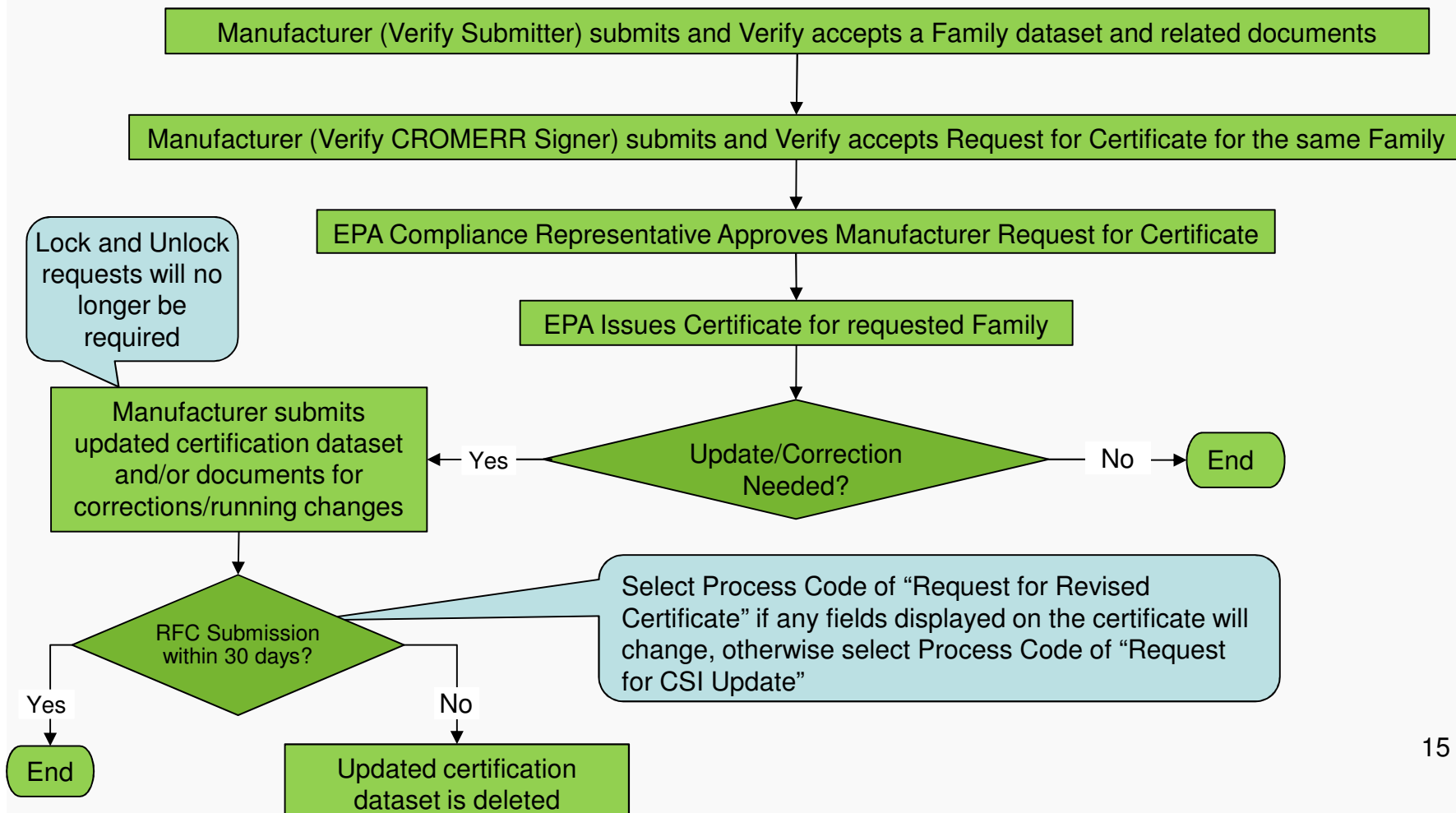
NRCI and Locomotive Manufacturer Webinar
June 2016



CROMERR and Certification



Verify Certification Process Overview





MyCDX | [Inbox](#) | [My Profile](#) | [Submission History](#)

Services ⚙️ Manage

Status	Program Service Name	Role
	VERIFY: Vehicles and Engines Compliance Information System	Certification Module: Electric-MC, Portable Fuel Containers, Snowmobile, HD-Evap, HD-Engine CFF
	VERIFY: Vehicles and Engines Compliance Information System	Heavy-Duty Highway Gas and Diesel Engines
	VERIFY: Vehicles and Engines Compliance Information System	Heavy-Duty Highway Tractors and Vocational Vehicles
	VERIFY: Vehicles and Engines Compliance Information System	Non-Road Compression Ignition
	VERIFY: Vehicles and Engines Compliance Information System	Light-Duty
	VERIFY: Vehicles and Engines Compliance Information System	Locomotive
	VERIFY: Vehicles and Engines Compliance Information System	Maintain Manufacturer Information
	VERIFY: Vehicles and Engines Compliance Information System	Marine Compression Ignition
	VERIFY: Vehicles and Engines Compliance Information System	Non-Road Spark Ignition
	VERIFY: Vehicles and Engines Compliance Information System	Upload Compliance Documents
	Verify-RFC: Request an Engine, Vehicle or Component Certificate of Conformity (CROMERR)	CROMERR Signer

“My CDX” Verify Roles

Click on the applicable industry to submit the required certification datasets and documents

Click on “Maintain Manufacturer Information” to update industries, addresses, contacts, etc.

Click on “Upload Compliance Documents” to submit non-certification compliance documents

Click on “CROMERR Signer” to request a certificate.