

The pages in this document were taken from the "Corsica River Watershed Restoration Action Strategy: Final Report" published in September 2004. The entire document can be found at http://dnrweb.dnr.state.md.us/download/bays/cr_strategy.pdf.

Corsica River Watershed Restoration Action Strategy: Final Report

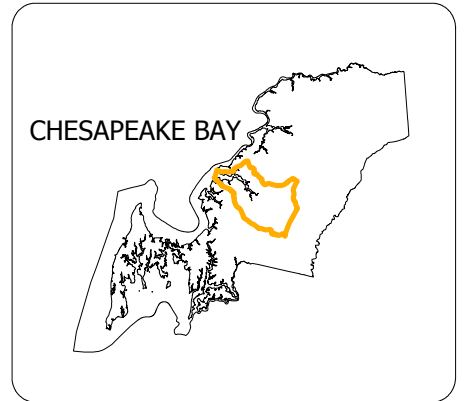
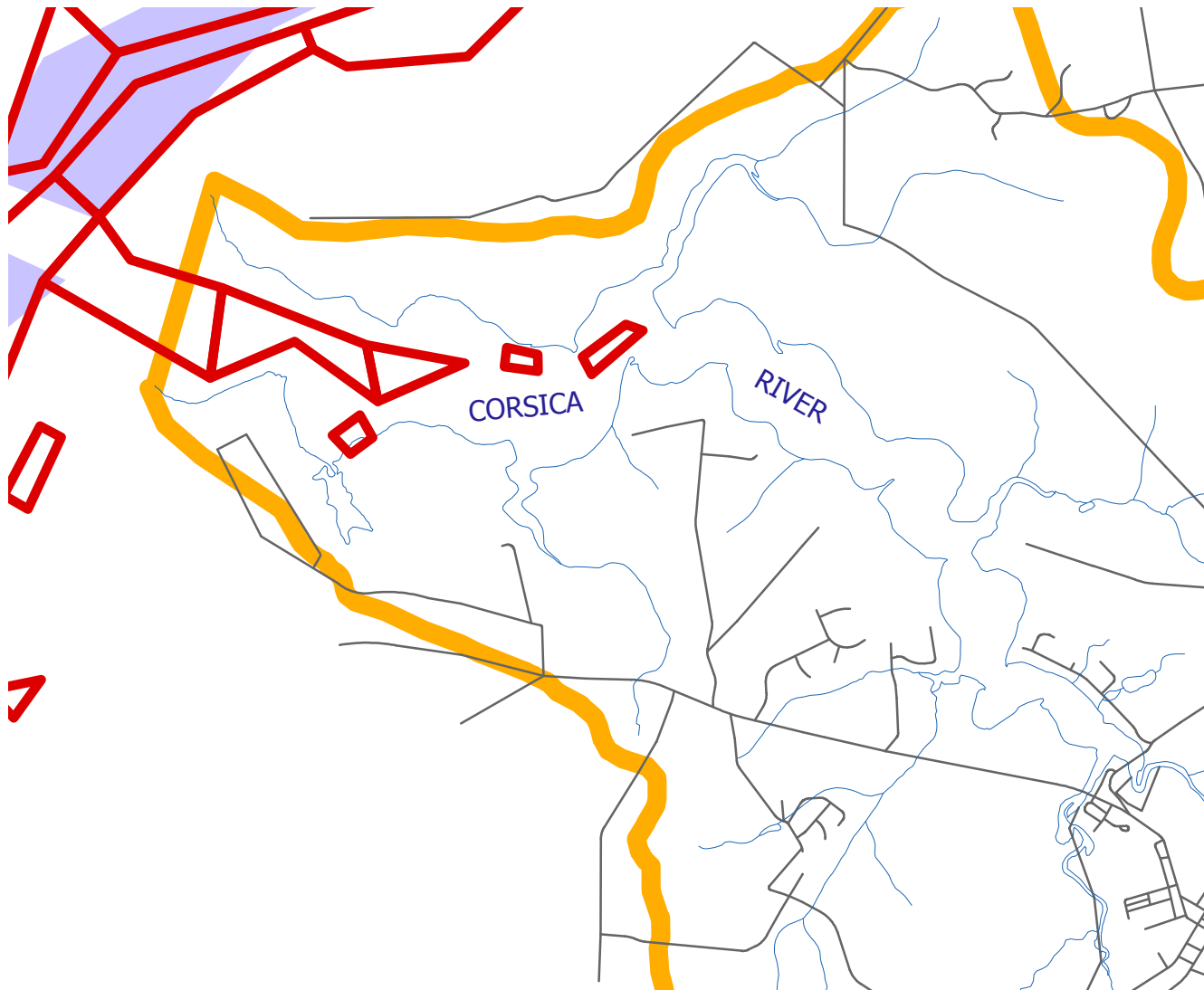
**Excerpt Showing an Example of How to
Characterize Species Populations**






September 2004

CORSICA RIVER WRAS

Figure 11
Historic Shellfish Beds

QUEEN ANNE'S COUNTY
MARYLAND



-  **Historic Oyster Beds (circa 1910)**
-  **Current Oyster Beds**
-  **Streams**
-  **Roads**
-  **WRAS Boundary**



2000 0 2000 4000 Feet



Historic oyster bed locations give us clues to the habitat preferences and survivability of our future oyster populations