

The background features a large, faint, circular watermark of the United States Environmental Protection Agency (EPA) seal. The seal is light green and contains the text "UNITED STATES" at the top and "ENVIRONMENTAL PROTECTION AGENCY" at the bottom. In the center of the seal is a stylized flower with three leaves and a sun-like center.

EPA Air Monitoring Results

In the area surrounding
Denka Performance Elastomer, LaPlace, Louisiana

7/6/2016



Levels of Chloroprene in the Air

- EPA is concerned about the levels of chloroprene in air around the Denka Performance Elastomers Facility in LaPlace
- EPA is working with the company, State and Parish officials to assess the levels of chloroprene in air
- EPA in coordination with the Louisiana Department of Environmental Quality (LDEQ) implemented a six-month air monitoring plan



Air Monitoring

- EPA is monitoring for chloroprene in air by using a 6-liter stainless steel canister (Summa)
- EPA is collecting 24-hour air samples at six locations every three days
- Analytical detection limit for chloroprene is $0.04 \mu\text{g}/\text{m}^3$ (ND = Not Detected)

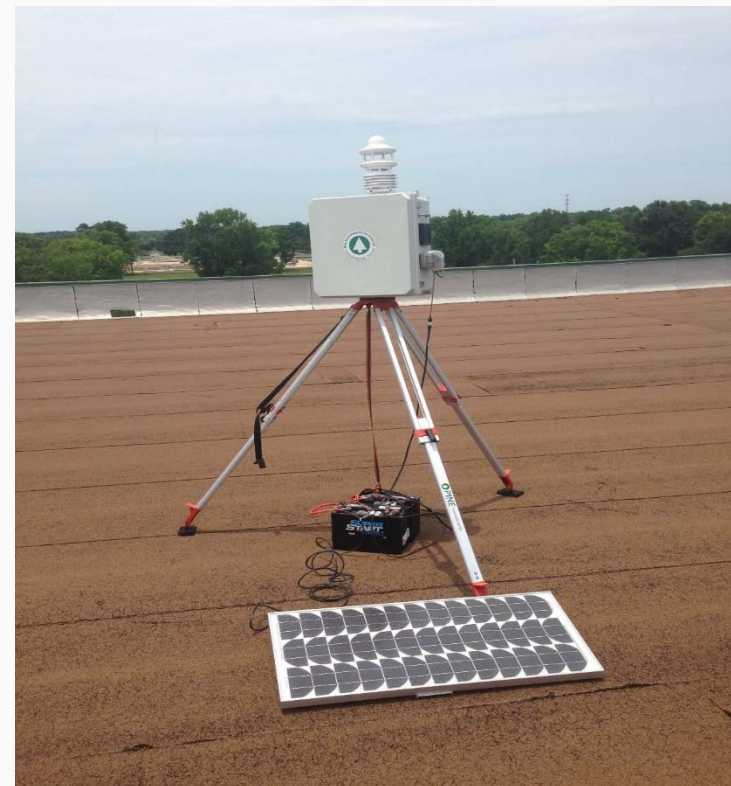


7/6/2016



Meteorological Information

- EPA is collecting:
 - Wind speed
 - Wind direction
 - Temperature
 - Barometric pressure
 - Relative humidity
 - Dew point



7/6/2016



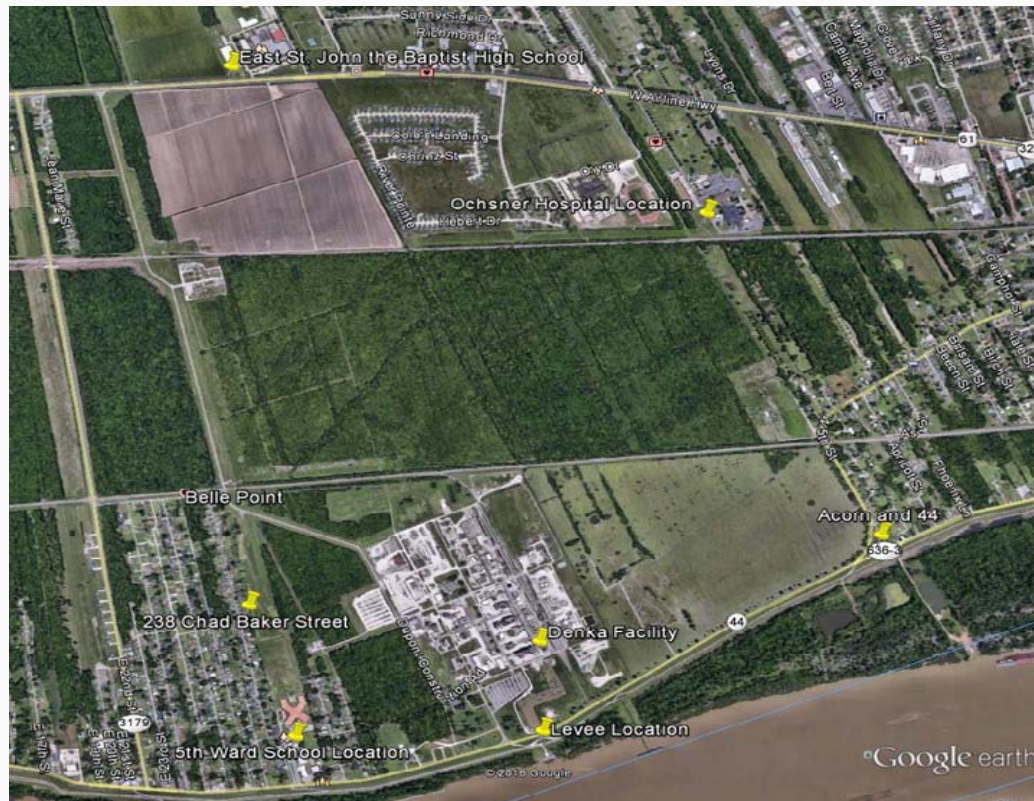
Air Monitoring Screening Levels for Chloroprene

- Long-term Screening Level
 - $0.2 \mu\text{g}/\text{m}^3$
- Detection limit ($0.04 \mu\text{g}/\text{m}^3$) allows for the comparison to the screening level





Six Air Monitoring Locations around Denka Facility



- East St. John HS
- Ochsner Hospital (River Parishes)
- Acorn & Highway 44
- Levee
- 5th Ward Elementary
- 238 Chad Baker

7/6/2016



DATE	Units	Ochsner Hospital	East St. John the Baptist High School	Acorn and Hwy 44	Levee	Fifth Ward Elementary School	238 Chad Baker
25-May-16	($\mu\text{g}/\text{m}^3$)	ND	0.831	1.291	ND	ND	ND
25-May-16 (collocated)	($\mu\text{g}/\text{m}^3$)	--	--	--	--	ND	--
28-May-16	($\mu\text{g}/\text{m}^3$)	--	Invalid	Invalid	Invalid	--	--
28-May-16 (collocated)	($\mu\text{g}/\text{m}^3$)	--	Invalid	--	--	--	--
31-May-16	($\mu\text{g}/\text{m}^3$)	17.482	2.017	30.322	6.130	3.072	7.581
31-May-16 (collocated)	($\mu\text{g}/\text{m}^3$)	--	--	--	--	--	--
2-Jun-16	($\mu\text{g}/\text{m}^3$)	0.083	2.666	0.073	2.637	1.882	7.145
2-Jun-16 (collocated)	($\mu\text{g}/\text{m}^3$)	0.047	--	--	--	--	--
5-Jun-16	($\mu\text{g}/\text{m}^3$)	0.809	0.341	ND	20.493	4.969	11.099
5-Jun-16 (collocated)	($\mu\text{g}/\text{m}^3$)	--	--	ND	--	--	--
9-Jun-16	($\mu\text{g}/\text{m}^3$)	4.679	1.251	0.624	4.933	3.409	5.477
9-Jun-16 (collocated)	($\mu\text{g}/\text{m}^3$)	--	--	--	4.715	--	--
12-Jun-16	($\mu\text{g}/\text{m}^3$)	1.277	5.150	0.983	0.272	0.573	5.368
12-Jun-16 (collocated)	($\mu\text{g}/\text{m}^3$)	--	5.731	--	--	--	--
15-Jun-16	($\mu\text{g}/\text{m}^3$)	10.809	1.070	0.225	0.366	1.745	1.211
15-Jun-16 (collocated)	($\mu\text{g}/\text{m}^3$)	--	0.990	--	--	--	--
18-Jun-16	($\mu\text{g}/\text{m}^3$)	2.981	0.268	4.389	2.702	1.890	7.871
18-Jun-16 (collocated)	($\mu\text{g}/\text{m}^3$)	--	--	4.207	--	--	--

7/6/2016



Air Monitoring Timeframe and Results

- EPA plans to continue air monitoring through November 2016
- We have made the air monitoring results available at:
www.epa.gov/region6

7/6/2016