

Project Fact Sheet

Occidental Chemical Corporation Facility, New Castle, Delaware

June 2016

This is the second project Fact Sheet prepared to provide the community with the status of the remedy implementation activities at the Occidental Chemical Corporation Facility. The approximately 200-acre Facility is located three miles northwest of Delaware City in New Castle County, Delaware, and lies south of the confluence of Red Lion Creek and the Delaware River. The Facility is in a heavily industrial setting.

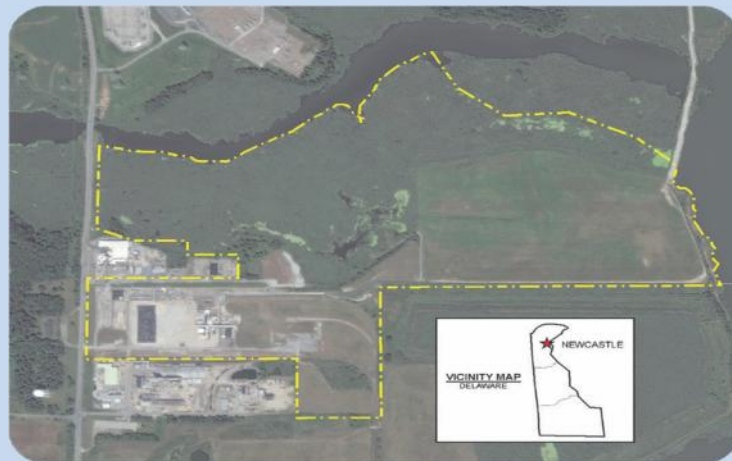
The Facility was built in 1964 by Diamond Alkali Company to manufacture chlorine, hydrogen, sodium hydroxide and potassium hydroxide, and it operated as a chlor-alkali plant from 1964 through 2007. The site was purchased by OxyChem in 1986, and OxyChem operated the Facility from 1986 through 2007. Chlorine production stopped in November 2005, and production of anhydrous potassium hydroxide was discontinued in 2007. Decommissioning and demolition of most plant structures was completed in 2007 and 2008.

To address Resource Conservation and Recovery Act (RCRA) corrective action requirements applicable to the Facility, OxyChem entered into an Administrative Order on Consent with EPA on June 28, 1991, pursuant to Section 3008(h) of RCRA. Under the RCRA Corrective Action Program, OxyChem completed a RCRA Facility Investigation, Interim Measures, Human Health and Ecological Risk Assessments, and a Corrective Measures Study.

OxyChem entered into an Administrative Order on Consent with EPA in June 2012 for implementation of the final remedy. A Corrective Measures Implementation (CMI) Work Plan describing the strategy for remedy construction, including a schedule and sequence of remedy design documents, was developed in coordination between EPA, Delaware Department of Natural Resources and Environmental Control (DNREC) and OxyChem and was approved by EPA in June 2013.

OxyChem is in the process of implementing the final remedies for the Facility under the RCRA Corrective Action CMI Program. These final remedies will be implemented in phases during the next several years.

Project Fact Sheets will be issued periodically during the implementation of the RCRA Facility activities to keep the community informed.



Facility Update

This Fact Sheet discusses RCRA activities performed from the fourth quarter of 2014 through the first quarter of 2016. Activities planned for the remainder of 2016 are also discussed.

1. Soil Remedy

The soil remedy implementation began in September 2014 and was completed in April 2015. The work included excavation of impacted soils, construction of a Consolidation Area at the former cell room location, consolidation of soils and installation of a temporary cover over the Consolidation Area, and installation of vegetated soil (and gravel) covers. EPA issued a construction completion determination on February 17, 2016.

2. Groundwater Remedy

Groundwater field pilot studies are in progress and will determine final design criteria for the in-situ (on site) remedies, which include enhanced bioremediation and chemical reduction. More information on these remedies can be found below. The outcome of the pilot studies will help determine the dosing for reagent addition, spacing of wells and other operating criteria for the full-scale implementation. The design of the in-situ remedies is underway and implementation is expected in 2017.

https://clu-in.org/download/Citizens/a_citizens_guide_to_bioremediation.pdf
https://clu-in.org/download/Citizens/a_citizens_guide_to_in_situ_chemical_reduction.pdf

3. Sediment Remedy

Bench scale tests and collection of field data have been completed to evaluate the design parameters for a reactive cap that will be installed in the adjacent tributary area. This cap will ensure that contaminants will be absorbed, chemically bound, and/or degraded by the reactive material and thus prevented from being released to the water column. Final design of dredging in the west tributary and capping in the east tributary is underway.

Please direct any questions about this project to either:

Mr. Rick Passmore
Glenn Springs Holdings, Inc.
(713) 215-7622

Rick_Passmore@oxy.com

Ms. Donna McCartney
U.S. EPA
(215) 814-3427

McCartney.Donna@epa.gov

Additional information can be found at EPA's web site for the OxyChem Facility:

<http://www3.epa.gov/reg3wcmd/ca/de/webpages/ded003913266.html>