

Status of Salton Sea Management Program

Regional Tribal Operations Committee

EPA Region 9

San Francisco, CA

02 August, 2016

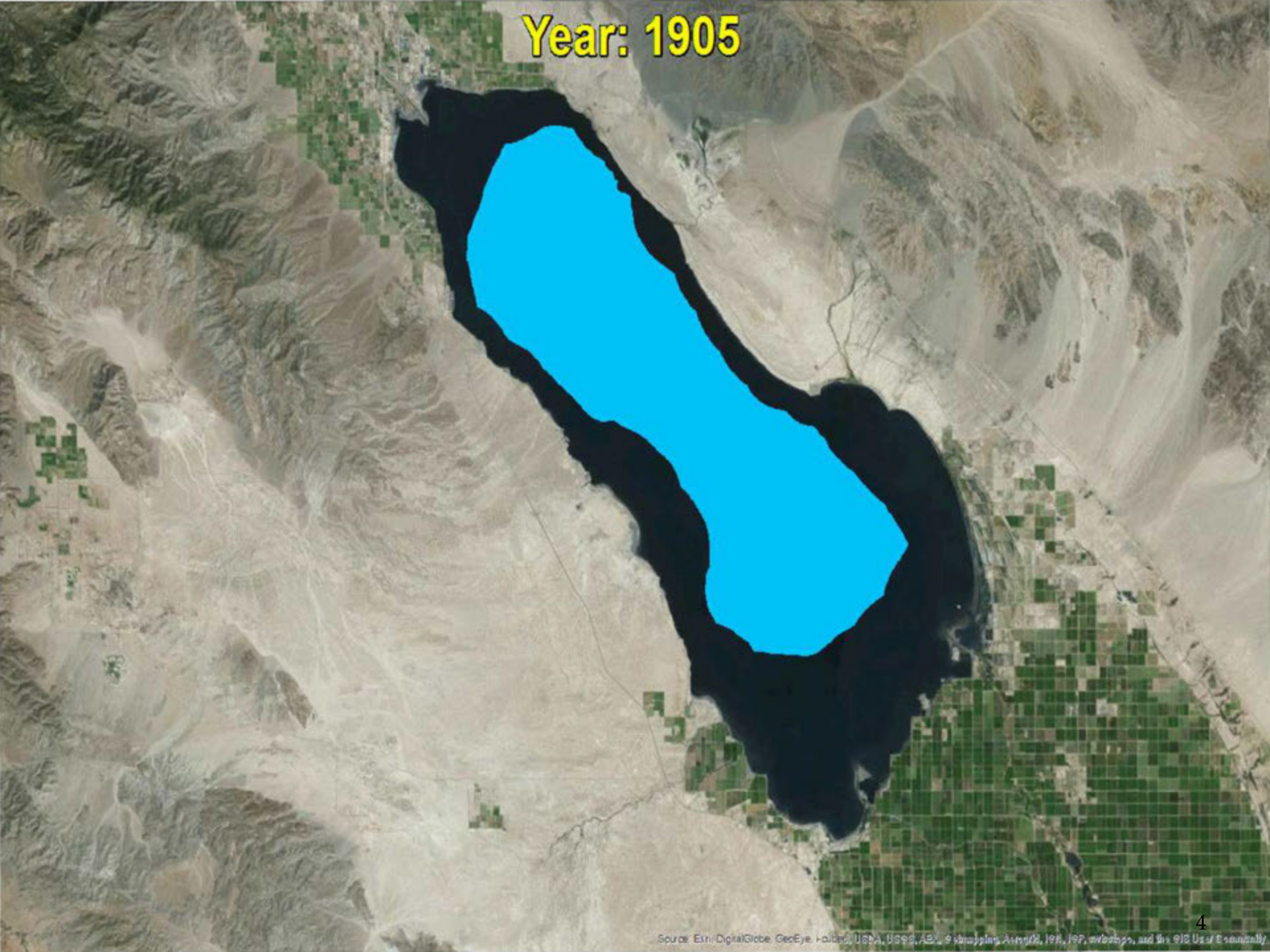


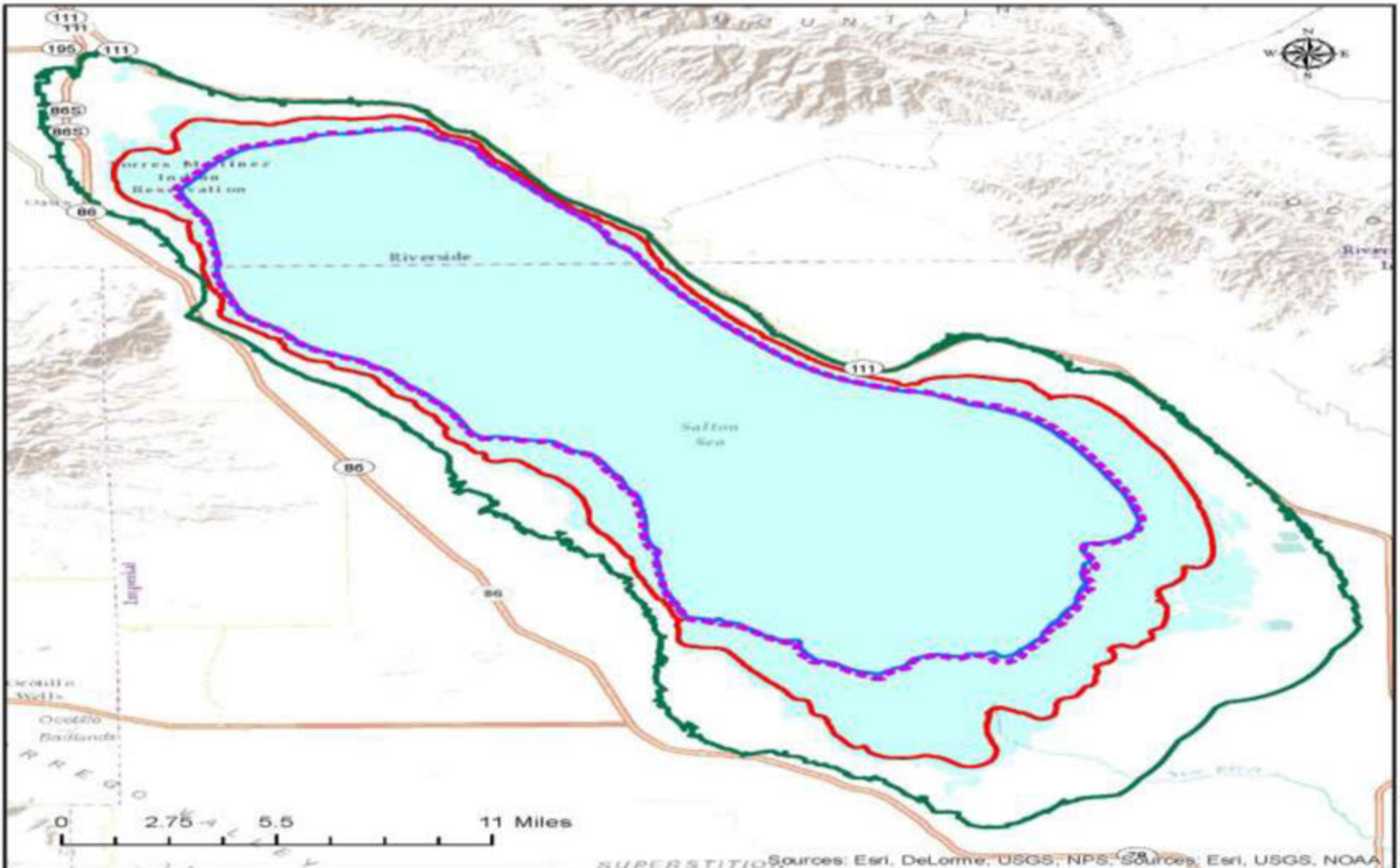


Salton Sea Management Program

- ▣ **Salton Sea Background and History**
 - Terminal lake
 - Shallow water
 - High evaporation
 - Salinity
 - Water quality
 - Reduced inflows
 - ▣ Causes
 - ▣ Results

Year: 1905



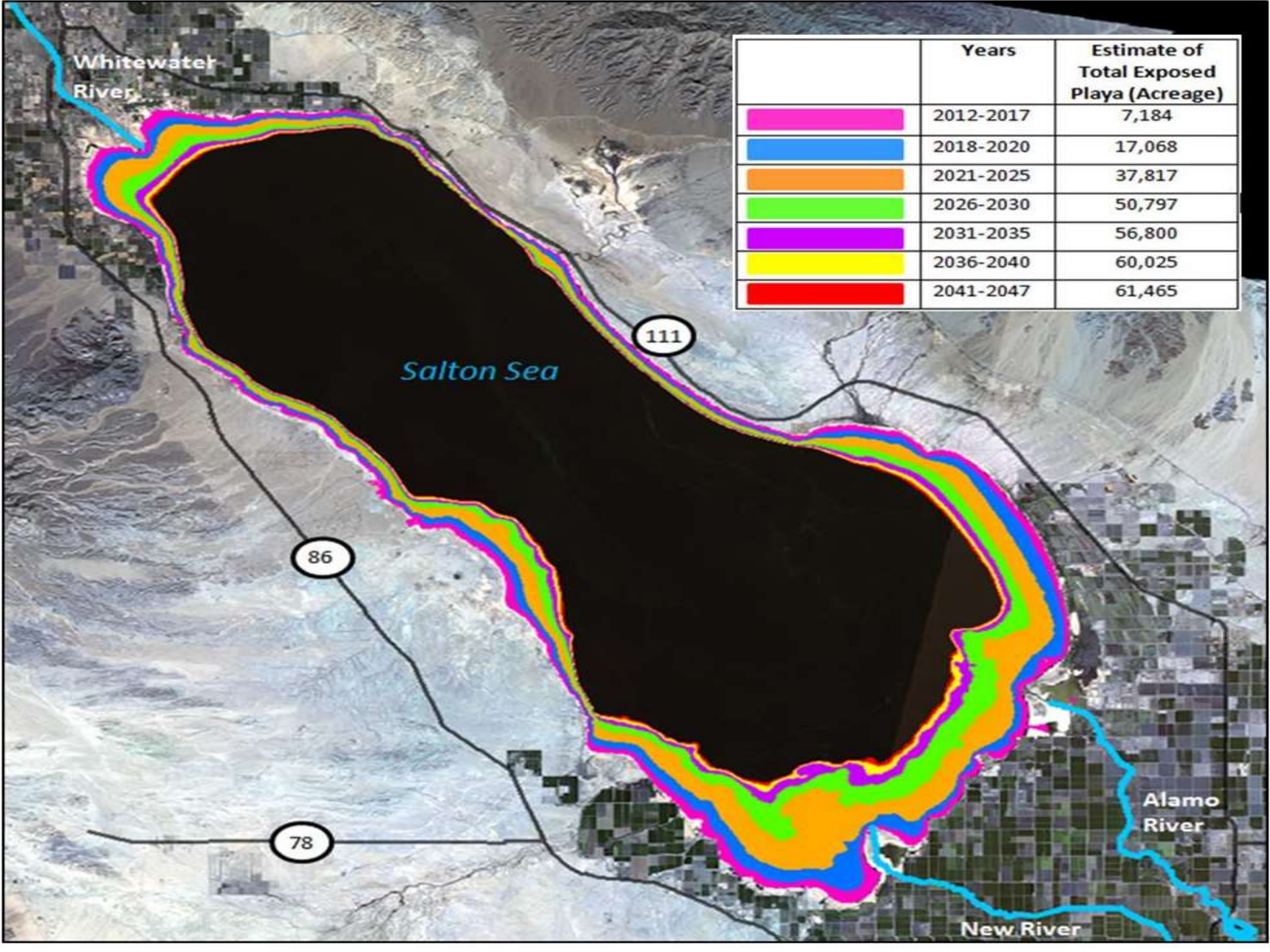


Legend

- 1907 Shoreline
- 1920 Shoreline
- 2013 Shoreline
- 2047 Shoreline

IMPERIAL IRRIGATION DISTRICT	
SALTON SEA	
SHORELINES FOR 1907, 1920, 2013 & 2047	
DATE: SEP 25, 2014	FORMATION
BY:	ENVIRONMENTAL
FOR:	

I:\NO_Images\01141005_Shoreline_1907_1920_2013_2047.mxd







01.13.2010

USFWS



01.13.2010
USFWS

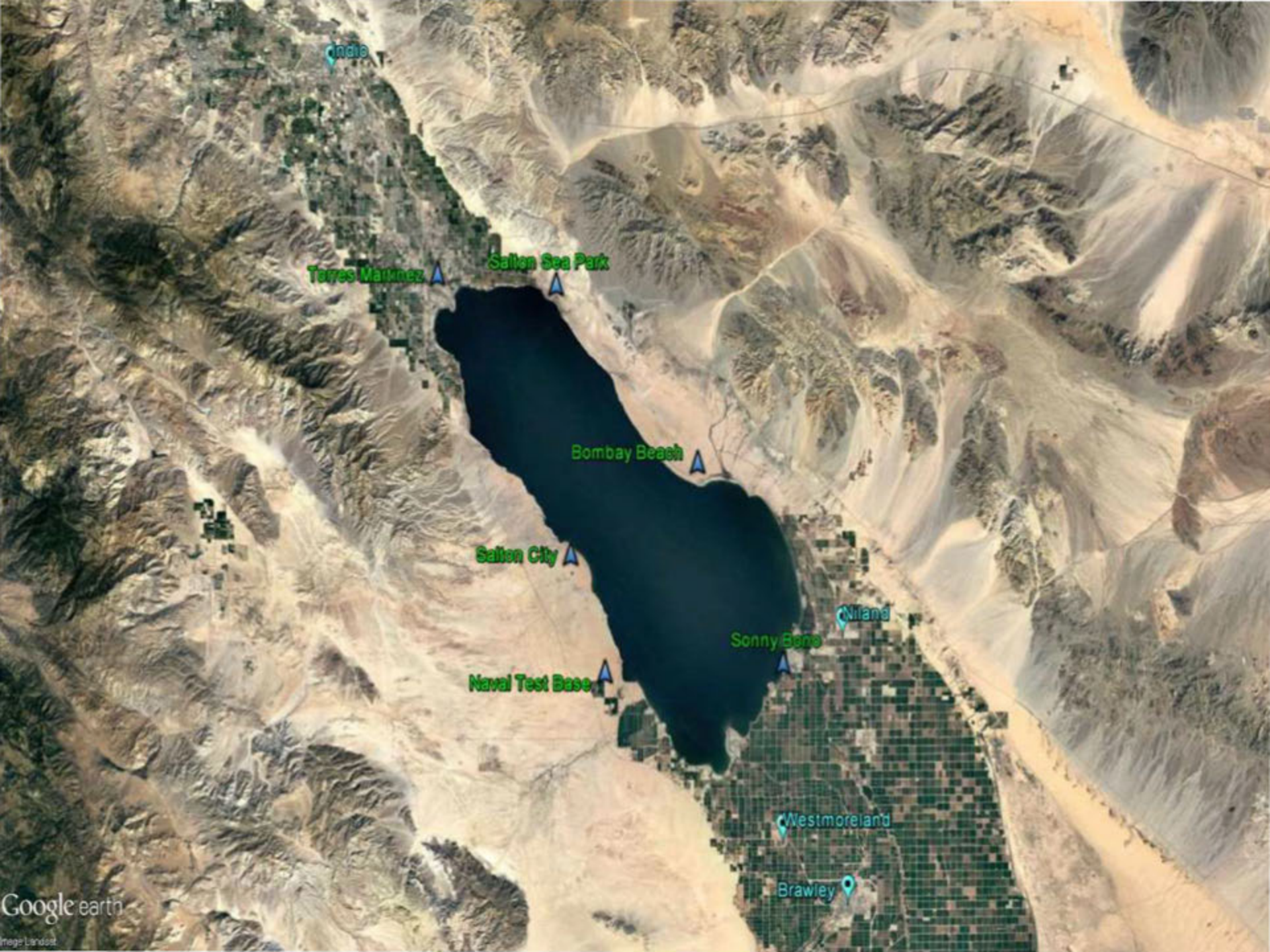


USEWS

Water Transfer Air Quality Mitigation Program

- Led by IID
- Funded by water transfer Joint Power Authority
- Funded by State after JPA limits are met
- Key components of plan
 - Emission Inventory
 - on lake sources
 - off lake sources
 - measurement strategies
 - Dust control strategy
 - proactive
 - pilot testing of dust suppression methods
- Estimation of control costs





Indio

Teres Martinez

Salton Sea Park

Bombay Beach

Salton City

Naval Test Base

Sonny Bono

Westmoreland

Westmoreland

Brawley

Maximum 24-hour PM₁₀ Concentrations and Numbers of Exceedances of the 24-hour PM₁₀ NAAQS by Salton Sea, Coachella Valley, and Imperial Valley Monitoring Site in 2015

Station	Maximum 24-hour PM ₁₀ Concentration	Annual Average PM ₁₀ Concentration
	(µg/m ³)	(µg/m ³)
Salton Sea		
Bombay Beach	165	26.1
Naval Test Base	240	38.9
Salton City	649	54.0
Salton Sea Park	104	21.4
Sonny Bono	158	38.2
Torres Martinez	170	31.9
Coachella Valley		
Indio	381	44.0
Palm Springs	199	20.9
Imperial Valley		
Westmoreland	193	46.6
Brawley	305	43.5
Niland	250	45.9

Playa Constituents

- Several analyses of seabed sediment samples conducted over the past 30 years
- Levels of legacy pesticides (i.e., DDT, DDE, etc.) found to be below levels of public health concern
- Levels of toxic elements (i.e., arsenic, chromium, etc.) found to be below levels of human health concern
- No data reported for very fine particle (PM_{2.5}) fraction in sediments
- Crust types and stability

May 2012



Google earth

August 2014



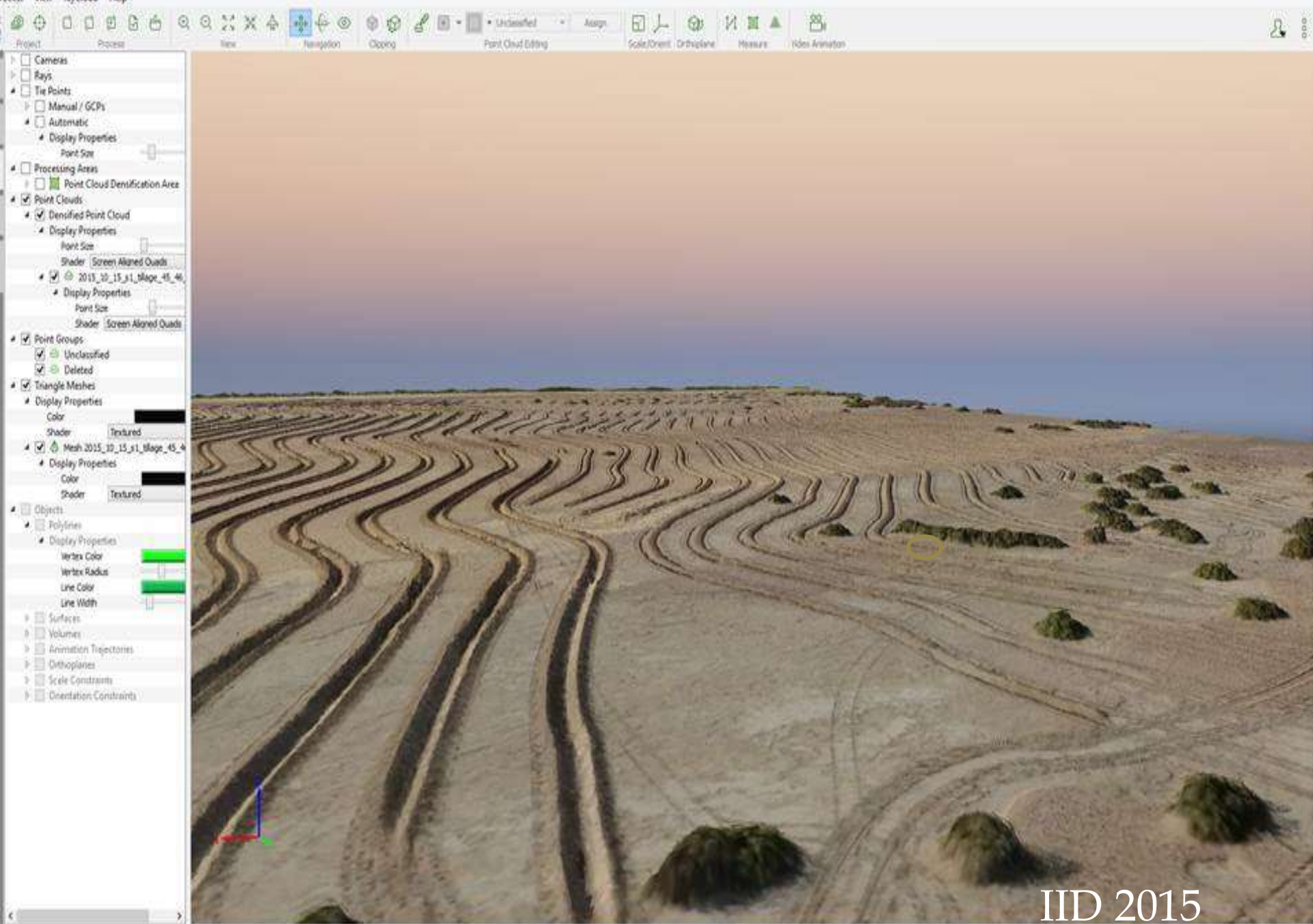
Google earth





06/21/2011



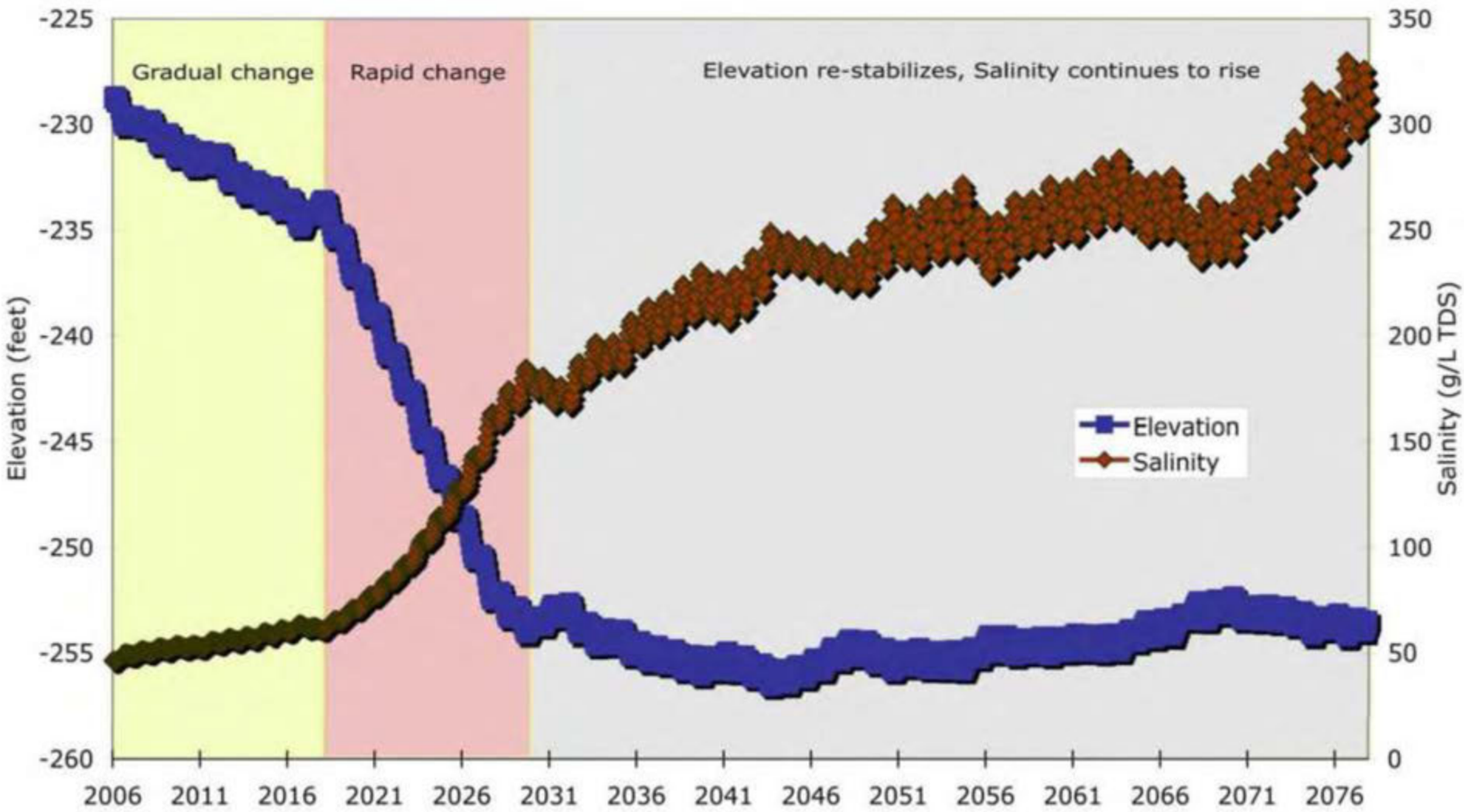








Salton Sea Elevation and Salinity



Effect of No- Action on Salinity and Lake Elevation.

Salton Sea Management Program

- State lead
 - State Water Board
 - Governor's Salton Sea Task Force
 - Assistant Secretary position
- Accelerate action at Salton Sea
- Short and medium term goals
- Long range plan
- Human health – air quality
- Wildlife habitat
- Funding sources

Salton Sea Management Program

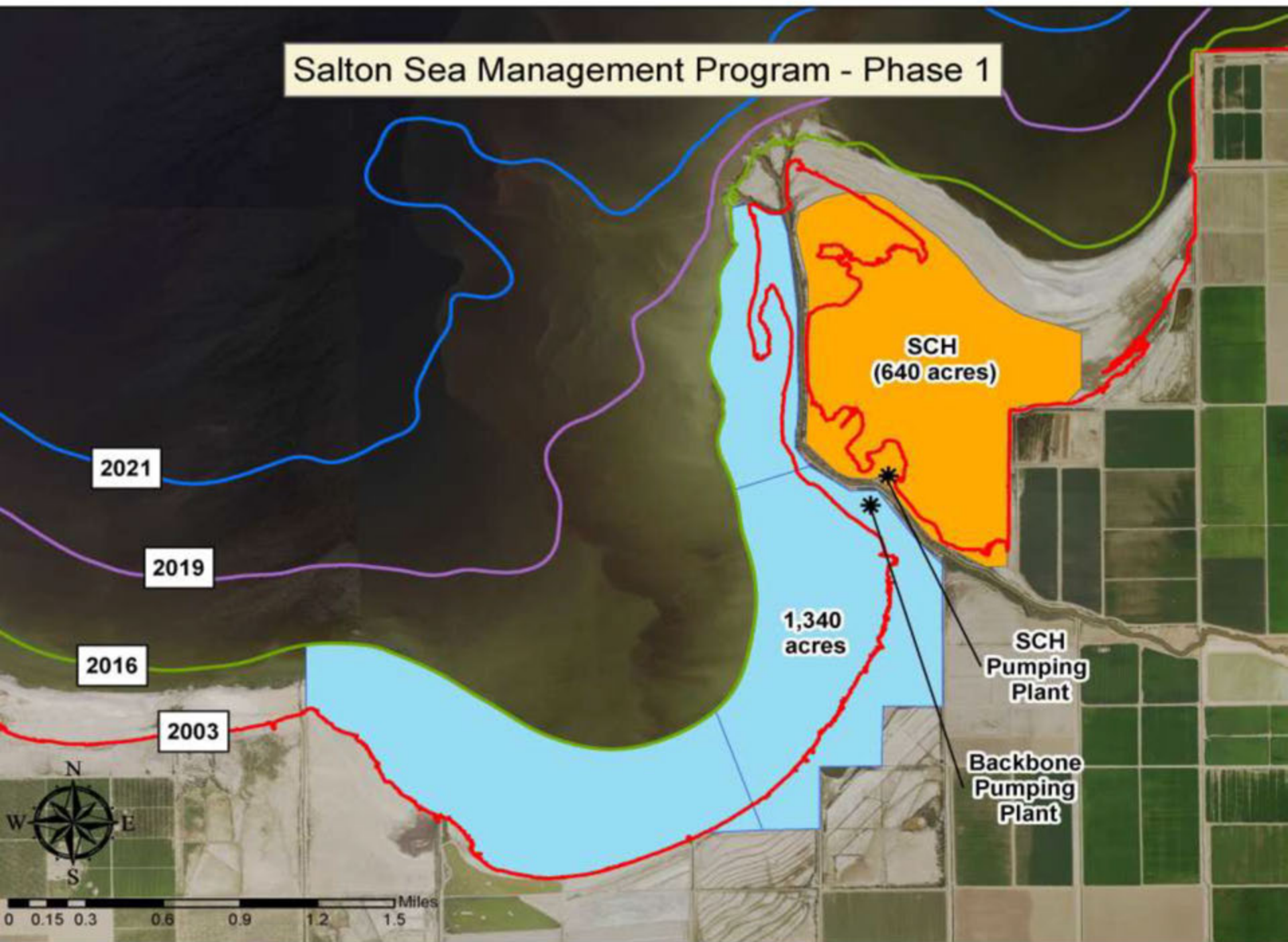
▣ Long Range Plan

- Long Range Planning Committee
- Draft by December 2016
- Coordinate air quality mitigation with water transfer mitigation program
- Evaluation includes:
 - ▣ imported water scenarios
 - ▣ water treatment scenarios
 - ▣ land use scenarios

Salton Sea Management Program - Phase 1

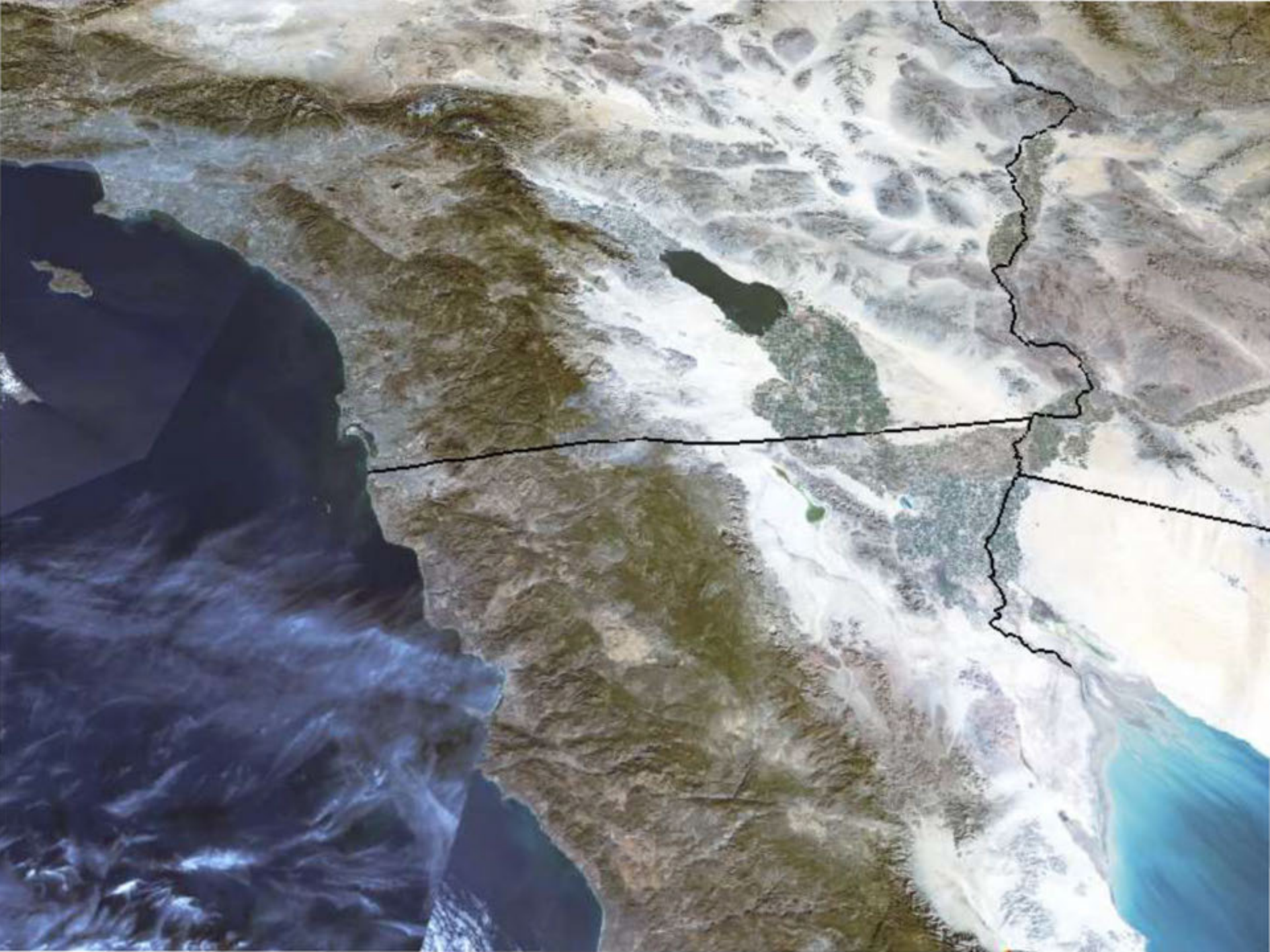


Salton Sea Management Program - Phase 1



Salton Sea Management Program - Phase 1





Salton Sea Information

▣ **Webpages**

- | | | |
|---|---------------------------------------|------------------------|
| ▣ | resources.ca.gov/salton-sea | Natural Resources SSMP |
| | saltonsea.ca.gov | Salton Sea Authority |
| | usgs.gov/saltonsea | USGS Science Office |
| | saltonseanow.com | IID |
| | usbr.gov/lc/region/programs/saltonsea | Reclamation |
| | saltonsea.uci.edu | UC- Irvine |
| | saltonseasense.com | UC-Riverside |

▣ **Assistant Secretary Natural Resources Agency-Salton Sea Policy**

Bruce Wilcox
78-078 Country Club Drive
Suite 109
Bermuda Dunes, CA 92203
760-200-1618
bruce.wilcox@resources.ca.gov