



Back-To-School with IPM

**Kick-off the School Year with
Smart, Sensible and Sustainable Pest Management**

Center of Expertise for School Integrated Pest Management
epa.gov/managing-pests-schools | school.ipm@epa.gov

Presenters



Sherry Glick

- Environmental Protection Specialist, Center of Expertise for School IPM
- Serves as the National Expert for School IPM in EPA's Office of Pesticide Programs in Dallas, Texas
- Over 30 years experience with the US Environmental Protection Agency



John Bailey, Ph.D.

- Director of Schools Plants, Chesapeake (Virginia) Public Schools
- Region II board member for Virginia School Plant Management Association and immediate past president for the National School Plant Management Association
- Over 24 years in the educational field



Mervin Brewer

- Assistant Custodial Supervisor, Salt Lake City (Utah) School District
- Utah certified pesticide applicator
- Past president of the Utah School Custodial Managers Association and member of Green Clean Schools Leadership Council

What is **I**ntegrated **P**est **M**anagement?

- A smart, sensible, and sustainable approach to pest control
 - **Smart** - creates a safer and healthier learning environment
 - **Sensible** - practical strategies reduce food, water, and shelter for pests
 - **Sustainable** - emphasizes prevention



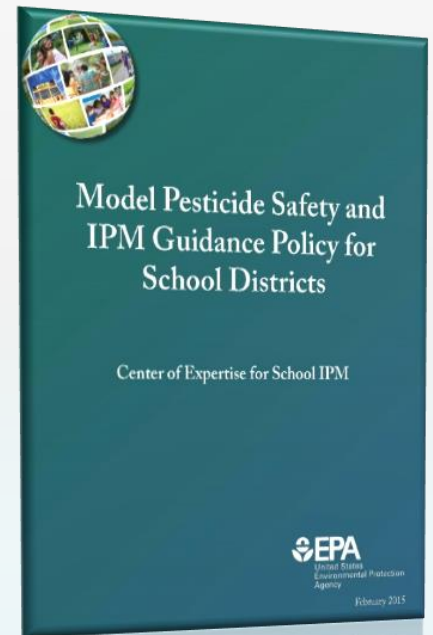
Key Personnel on the School IPM Team

- Administrator (Superintendent/Principal)
- Plant Manager / Facilities Director
- Lead Custodian
- Nurse



Administrator

- Creates ownership of the IPM program
- Designates an IPM coordinator
- Ensures the district has an IPM policy and plan
 - Communicates goals, objectives and intent
 - Manages for compliance



School Administrator

- Communicates a leadership commitment to IPM
- Oversees the IPM committee
- Promotes and allocates funding for IPM training and education
- Mentors and challenges other school administrators



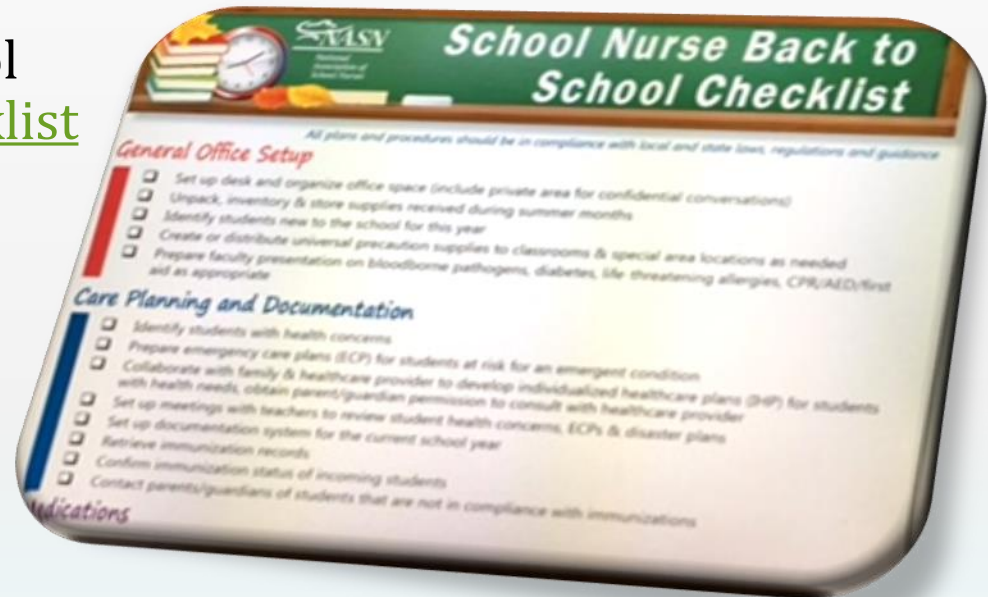
School Administrator

- Realizes and tracks results
 - Healthier school environment
 - Staff recognition
 - Creates a culture of ‘shared’ sanitation responsibility between administrators, staff, and students



School Nurse

- The on-site health care representative
- National Association of School Nurses' Back-to-School Checklist



School Nurse

- Identify students with health concerns
- Actively participate in the IPM committee
- Educate staff and parents about public health issues, pests and asthma
- Address health issues with faculty and staff
- Share action plans (asthma, bed bugs, lice) with faculty and parents



INTEGRATED PEST MANAGEMENT

Presented By Dr. John A. Bailey

Director of The Department of School Plants, Chesapeake Public Schools, Virginia

Past President, National School Plant Management Association

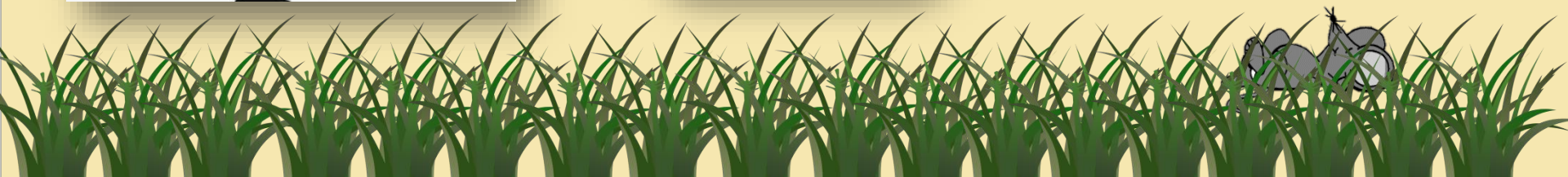


Implementing Your IPM Policy or Plan

Does your school district have a policy or plan?

If so, begin to plan for the upcoming school year by:

- Using your Website for Access to your IPM Policy
- Notifying your Staff via a Faculty Meeting or a Mailer
- Contacting all of your Parents about your IPM Plan



IPM Committees

Are recommended for all schools

It is best to get stakeholder input for issues at school and develop a plan on how the team will handle them with an initial meeting at the beginning of the school year.



Team members should include:

- School Administration
- School Nurse
- Custodians
- Maintenance staff
- Teachers and Parents



Purpose of the IPM or Health and Safety Team

Have Periodic Inspections and Team Meetings



Inspect your school building for:

- Sanitation and Cleanliness
- Exclusion
- Consistent Monitoring
- Upkeep of Maintenance



Do you use an Outside Vendor for Pest Management?



- Confirm vendor is compliant with IPM best practices.
- Ask how they will monitor and complete inspections.
- Ask how they will document findings.
- Ask to have face to face meetings with your vendor!



Make IPM a Division Wide Team Effort

- Ensure your IPM practices are efficient.
- Monitor your costs and expenses, and calculate savings.
- Educate key staff members.
- Organize in-service training for all staff members regarding IPM practices.
- The rewards will be a healthy environment in your school for all stakeholders.



Monitor Your IPM Inventory

- How do you store your IPM inventory? - Supply house/Warehouse?
- Are your IPM materials based on work orders or planned preventative treatment?
- Responsibly dispose of materials based on usage and document on a data sheet that can be tracked and monitored over time.
- Start the school year off with an IPM inventory update and with a clean storage area.



Maintaining a Positive Environment in Schools

There is no better investment than our children.

We are all responsible for maintaining a safe and healthy environment for students and staff. They deserve the best facility to learn in and play in. Having an IPM program supports this!





Back to School and IPM: Custodial Perspective

Environmental Protection Agency Webinar series

August 17th 2016

Mervin Brewer, Assistant Custodial Supervisor



Salt Lake City School District
Custodial Services

Mervin.brewer@slcschools.org

801-330-7891



Overview

Salt Lake City School District

- Students

 - 24,674 students

 - 57% are ethnic minority

 - 59% from low income families

 - 33% learning English as a second language

- Facilities

 - 43 Facilities- 4,334,943 Ft²

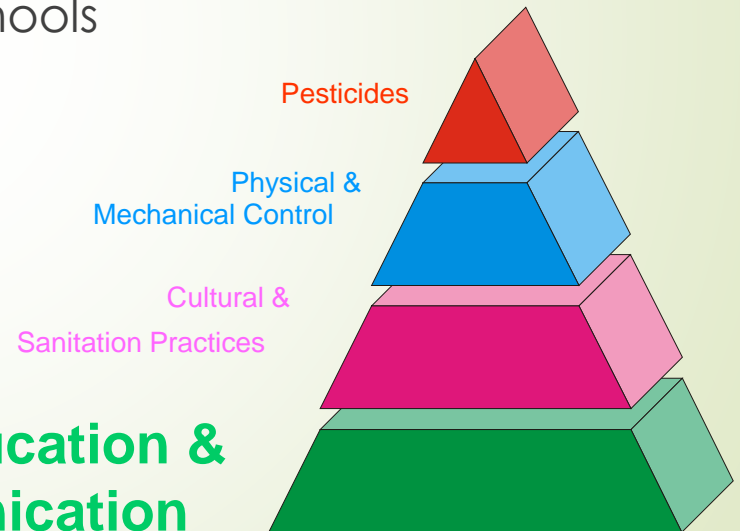
- SLCSD employs @4200 people. Includes Administrators, Teachers and support staff.



Priorities- Education

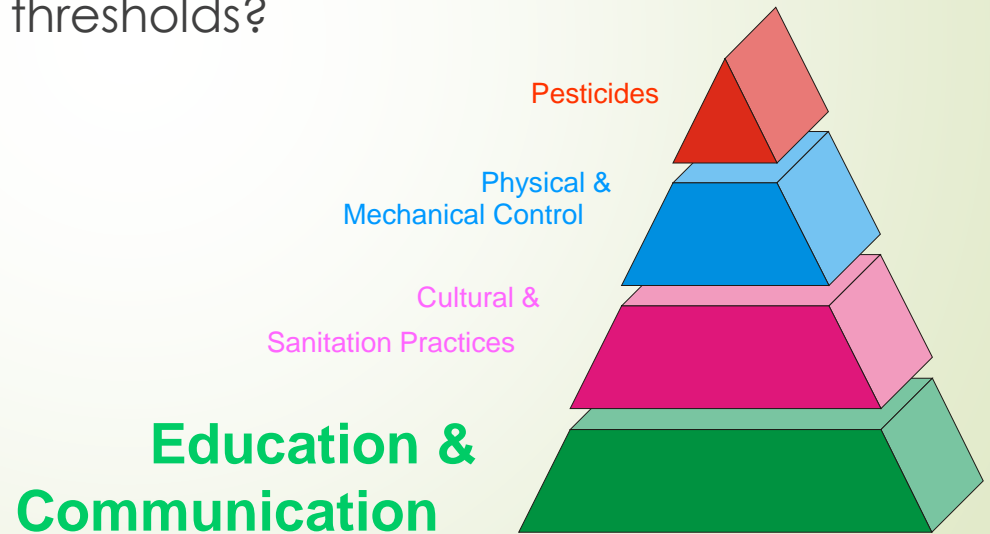
- Education and communication is paramount.
- Educate staff on your schools IPM practice/ culture.
- Be the “Education Professional” of pest management

**Education &
Communication**



Priorities- Education

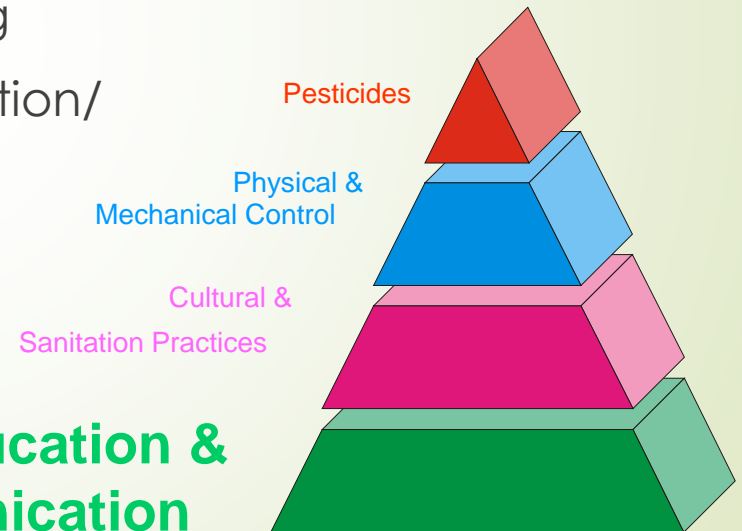
- Educate Faculty and proper reporting in your system.
- What are your thresholds?



Priorities- Education

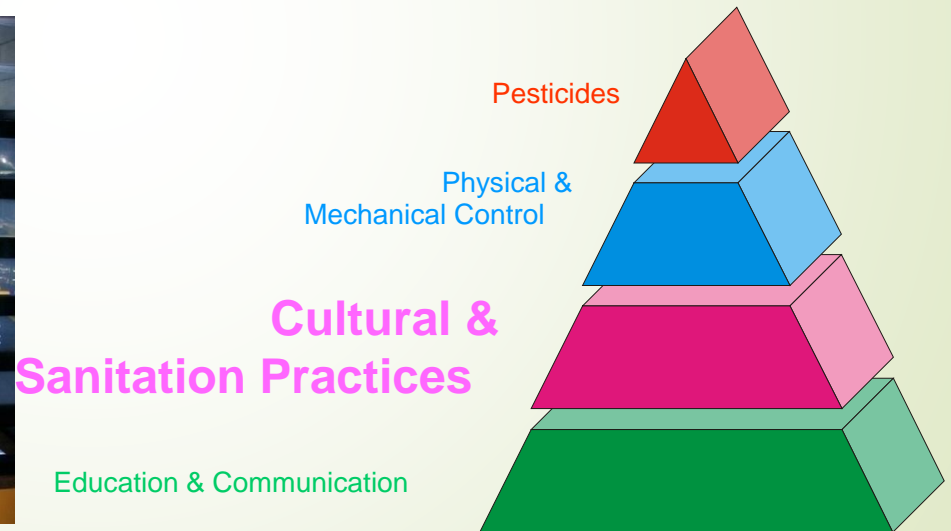
- Train and retrain custodial staff.
- Quarterly update training
- Maintenance/ child nutrition/ grounds training.

**Education &
Communication**



Education- Sanitation

- Educate educators to keep clutter out.



Education- Sanitation

- Remove/ keep out clutter- Sofa so bad



Education- Sanitation

- Keep clean dumpsters, power wash when needed or change them out.
- Waste stream management- good quality trash liners.



Education- Sanitation

- Lockers, Desks and other storage areas should have no food left overnight.
- Good quality trash liners in classrooms- avoid leakage.
- Avoid aluminum can collecting.



Education- Sanitation

- Start the year with clean drains- summer cleaning



Education- Sanitation

- Educate cleaning staff to clean mops and buckets after use.
- Store mops and brushes upside down up off the floor, possibly in wall racks.



Keep them out

- Conduct Inspection/ assessment for entry points.

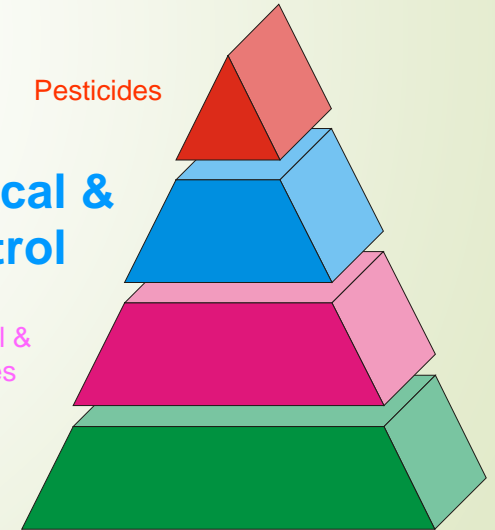


Physical & Mechanical Control

Cultural & Sanitation Practices

Education & Communication

Pesticides



Ongoing involvement

- Be a key participant in IPM committee meetings.
- Continue your own education.



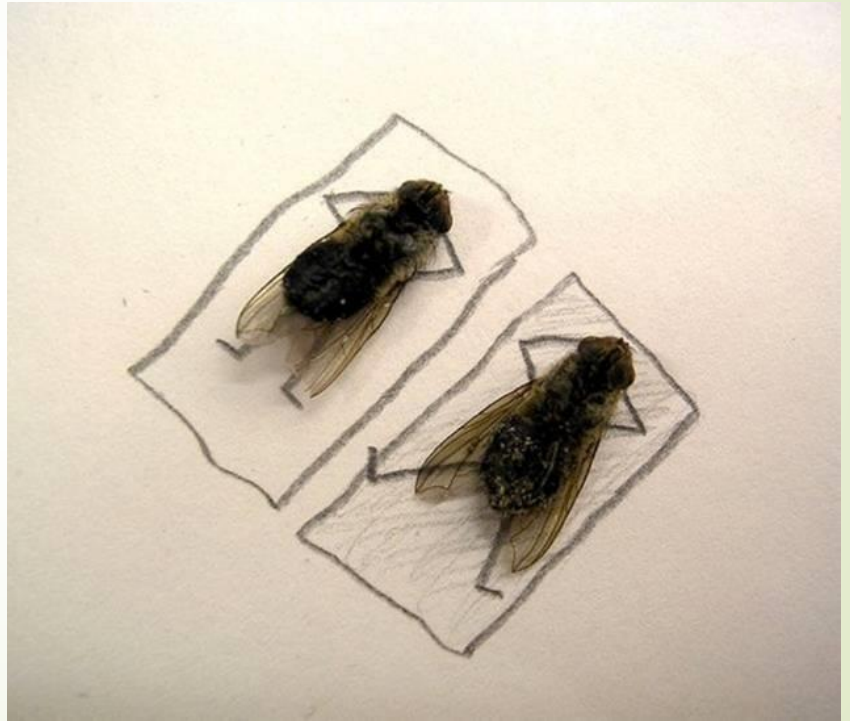
We're all in this together!

- Integrated Pest Management is a Team effort.



The End

Questions?



Upcoming School IPM Webinars

- Sept. 20 Protecting Students from Mosquitoes and the Zika Virus at Schools
- Oct. 18 Keeping Bats Out of School Buildings
- Nov. 15 Developing an IPM Plan for Your School
- Dec. 13 Managing Cockroaches in Schools
- Jan. 24 Pests of Public Health Importance in Schools
- Feb 21 Contracting for IPM-Based Pest Control Services for Schools
- Mar. 14 Preventing Pests in School Cafeterias and Kitchens
- Apr. 11 Contending with Invasive Plants on School Grounds
- May 9 Managing Bed Bugs in Schools, Childcare Centers and Boarding Schools
- May 23 Managing Yellow Jackets and Other Wasps on School Grounds

CERTIFICATE *Of* PARTICIPATION

This is to certify the above participant attended the 90-minute webinar entitled

Back-To-School with IPM

**Kick-Off the School Year with Smart, Sensible and Sustainable
Pest Management**



PRESENTED BY:

EPA's Center of Expertise for School IPM

ON THIS DAY:

August 17, 2016

Sign up for EPA's School IPM Listserv!

Subscribers receive

- Webinar invitations
- IPM-related highlights and articles
- Updates on EPA school IPM activities

How to Subscribe

- www.epa.gov/managing-pests-schools
- school.ipm@epa.gov

Questions ?



Center of Expertise for School IPM

school.ipm@epa.gov

844 – EPA – SIPM (toll-free)

www.epa.gov/managing-pests-schools