

Pompton Lakes DuPont Cleanup

**Community Advisory Group Meeting
October 6, 2010**



Community Advisory Groups

- CAGs are advisory
- CAGs represent the interests of the broader community
- CAG meetings are open to the public to observe & provide input through a CAG member
- EPA/NJDEP retains its decision-making authorities & responsibilities

Community Advisory Groups

- CAG input is considered very important
- Public input will be solicited through other methods in addition to CAG
- CAGs provide a service to members of the affected community

Technical Assistance Support for Communities

- **EPA funds independent technical assistance at hazardous waste sites**
- **National Technical Assistance Services for Communities (TASC) contract**
- **Assistance includes independent technical review & neutral facilitation for CAGs**

TASC Input to CAG

- TASC can be a resource to the Pompton Lakes Environmental CAG
- Does the CAG recommend the TASC advisor be used for specific project components (lake sediment cleanup, remedial investigation reports, etc.)?
- Are there specific issues the CAG wants TASC advisor to focus on (sample results, cleanup technologies, plume delineation, etc.)?
- How does the CAG want to receive results?

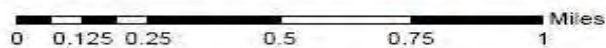
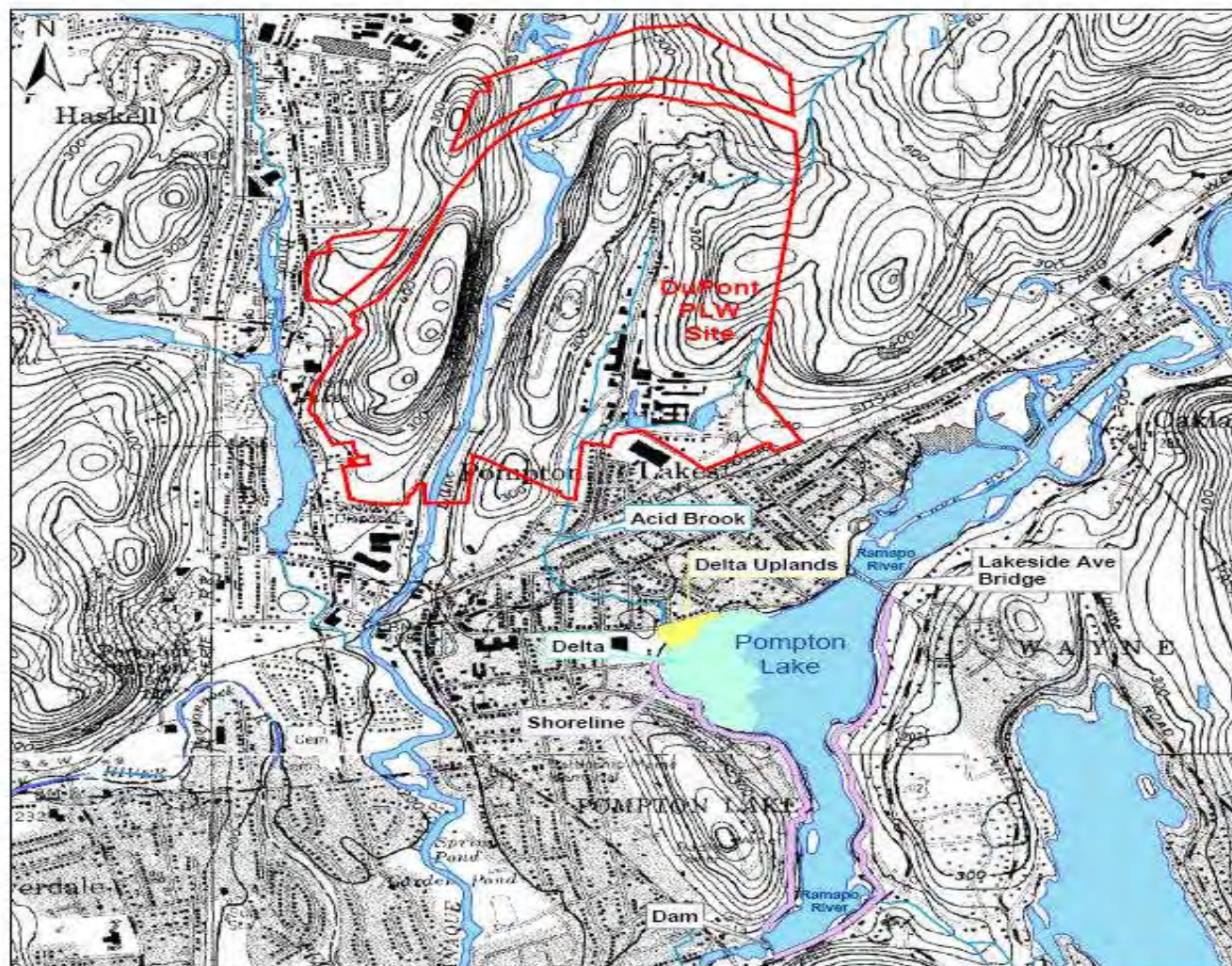
What is TASC Needed On?

- **CAG should consider & identify as soon as possible what it needs TASC assistance on & when**
- **Identifying specific documents/issues & a specific timeframe increases likelihood of funding & completion of requested assistance**

Pompton Lakes DuPont Cleanup

On-Going Projects

- Vapor Mitigation System Installation and Sub-Slab/Indoor Air Sampling in Vapor Mitigation Area
- Ground Water Contaminant Plume Cleanup
- DuPont Works Site Investigation & Cleanup
- Wanaque River Investigation
- Sediment Cleanup in Pompton Lake
- Pompton Lake Uplands Area Cleanup



Legend:

Base is portions of the USGS Wanaque and Pompton Plains QUAD.

PARSONS

200 Cottontail Lane South
Somerset, New Jersey 08873

Site Location Map

**DuPont Pompton Lakes Works
Pompton Lakes, New Jersey**

Figure 1-1

What are we working on now?

Vapor Mitigation System Installations	<p>→ 439 Homes in Plume</p> <p>→ 208 Homes Have Systems (10/1/10)</p> <p>→ 79 Installations in the "Pipeline"</p> <p>→ March 2010 = 178 Installs Completed</p>	Four 3rd Party Installation Designs Have Been Submitted to EPA; One approved.
Vapor Mitigation Area Sampling	<p>→ Three Choices:</p> <p>→ O'Brien & Gere (DuPont)</p> <p>→ NJDEP Contractor</p> <p>→ 3rd Party Contractor</p>	EPA has approved two third party samplers. One additional sampler expected to seek approval from EPA.

What are we working on now?

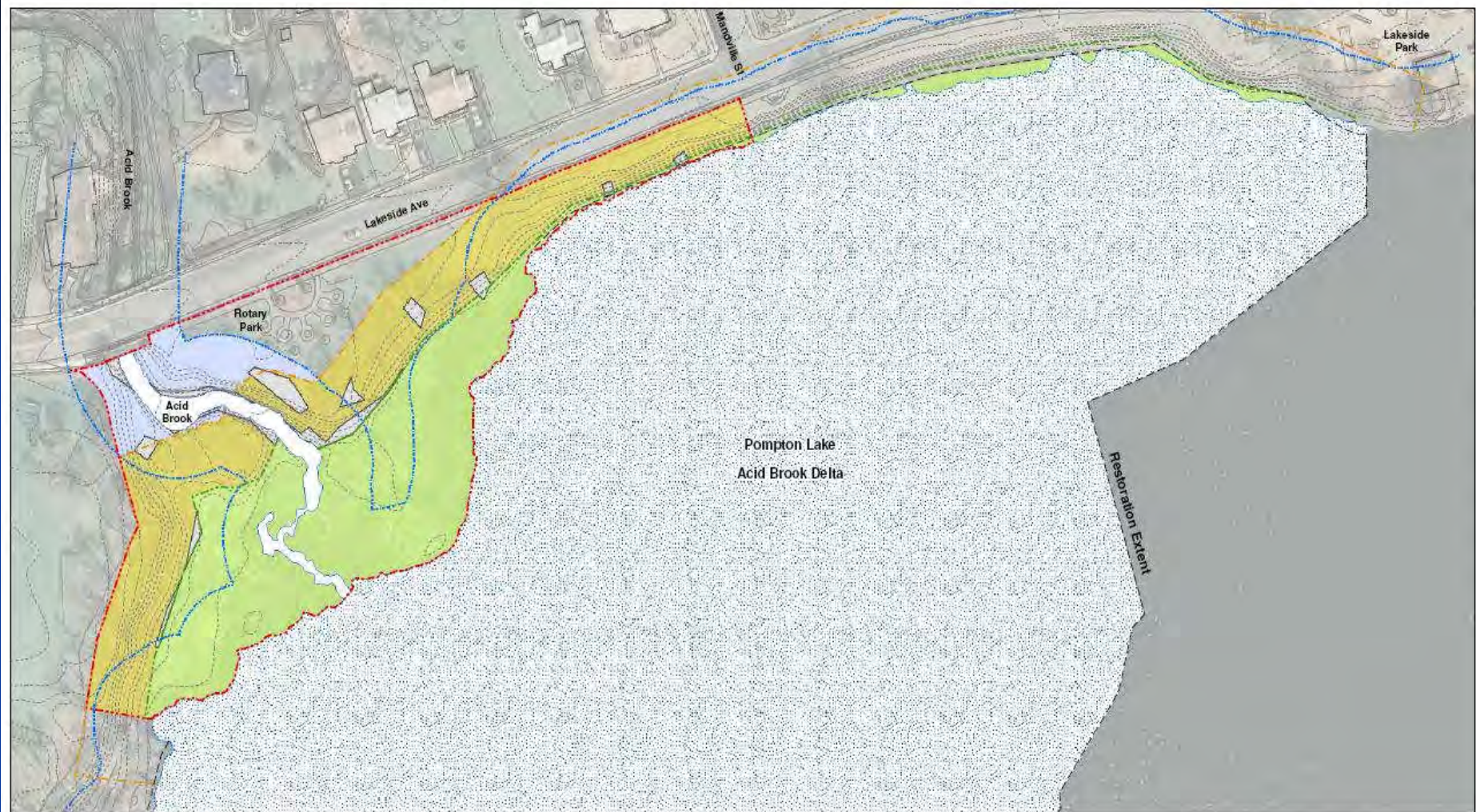
Expanded Investigation Area Sampling	54 out of 71 Homes in Expanded Investigation Area Sampled	Size of Plume Has Not Expanded; Size of Buffer Zone Has Expanded
Vapor Intrusion Investigation	Ground Water Monitoring & Reporting Ongoing	Ground Water, Sub-Slab & Indoor Air Data Summarized in Vapor Intrusion RI Report
Contaminated Ground Water Cleanup Technology Evaluation	Final Design for Pilot Study due November 2010	Enhanced Anaerobic Biodegradation cleanup will be tested

What are we working on now?

Eastern, Western & Northern Manufacturing Areas Remedial Investigations	Agency Reviews of Draft RI Reports Are Ongoing; One RI Report For Each of the Three Areas	Additional Reports & Work Plans Anticipated
Wanaque River Valley Investigation of Surface Water & Sediment	Agency Reviews of Draft RI Report Are Ongoing	Data Summarized in Draft Wanaque River Valley RI Report

What are we working on now?

Lake Sediment Cleanup	Cleanup Approach Spelled Out in Corrective Measures Implementation Work Plan	45 Day Public Comment Winter 2010/2011
Acid Brook Delta Uplands & Pompton Lake Shoreline Investigation	Agency Reviews Are Ongoing	Data Summarized in Pompton Lake Uplands Draft RI Report



Legend

- Wetland Area Boundary
 - Transition Area Boundary (50ft)
 - Riparian Zone Boundary (50ft)
 - Delta Restoration Area (~26 acres)
 - Wetland Restoration Area (~1 acre)
 - Transition Area Restoration Area (~1 acre)
 - Upland Restoration Area (~0.1 acres)
 - Acid Brook Restoration Area (~0.1 acres)
 - Riparian Zone Restoration Area (~1.5 acres)
 - Temporary Disturbance Area (~0.2 additional acres) (~2.2 total acres)
- Note:* Transition Area and Riparian acreages include overlap with other resource areas

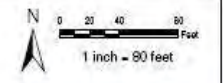
Figure 2-6
Restoration Plan
Uplands
DuPont Pompton Lakes Works
 Pompton Lakes, New Jersey

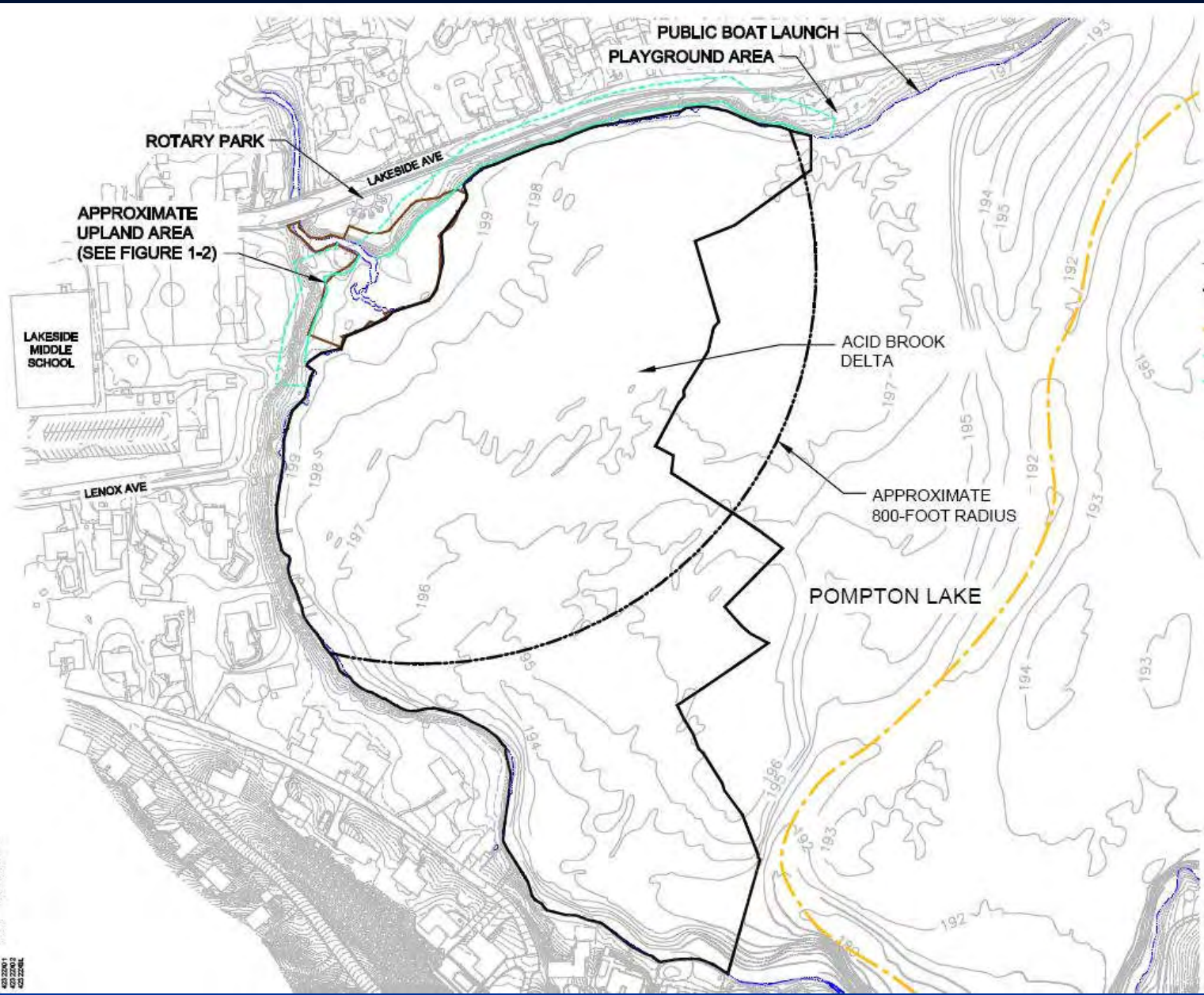
Prepared By: VP	Checked By: BE
Job: 18965155	Date: 05/18/2010



Source:
 NJDEP 2007 Aerial Imagery
 URS Custom Data

 NAD 1983 State Plane New Jersey
 Projection: Transverse Mercator
 False Easting: 492125.000000
 False Northing: 0.000000
 Central Meridian: -74.500000
 Scale Factor: 0.999900
 Latitude Of Origin: 38.833333
 Linear Unit: Foot US



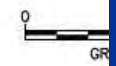


LEGEND:

- APPROXIMATE CENTERLINE
- APPROXIMATE AREA LIMIT
- CENTERLINE
- WETLAND
- WETLAND

NOTES:

1. THE BASE MAP WAS PROVIDED BY THE STATE OF NEW JERSEY, AND THE PHOTOGRAPHY BY THE U.S. GEOLOGICAL SURVEY, AND REPRINTED BY THE STATE OF NEW JERSEY, AND REPRINTED BY THE STATE OF NEW JERSEY, AND REPRINTED BY THE STATE OF NEW JERSEY.
2. WETLANDS DELINEATED IN JUNE 2009.
3. BATHYMETRY BASED ON SOUNDINGS COLLECTED BY THE STATE OF NEW JERSEY, AND REPRINTED BY THE STATE OF NEW JERSEY, AND REPRINTED BY THE STATE OF NEW JERSEY.



DUPONT ENGINEERING
 POMPTON LAKE
 CORRECTION
 IMPLEMENTATION

ACID BROOK



402 2260 01
 402 2260 02
 402 2260 03

