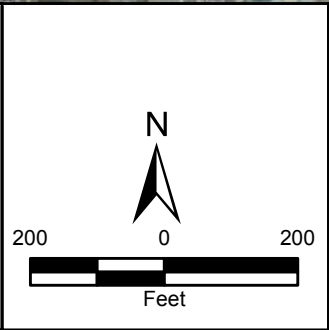
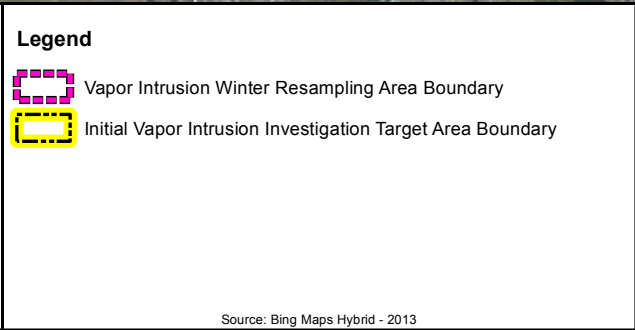
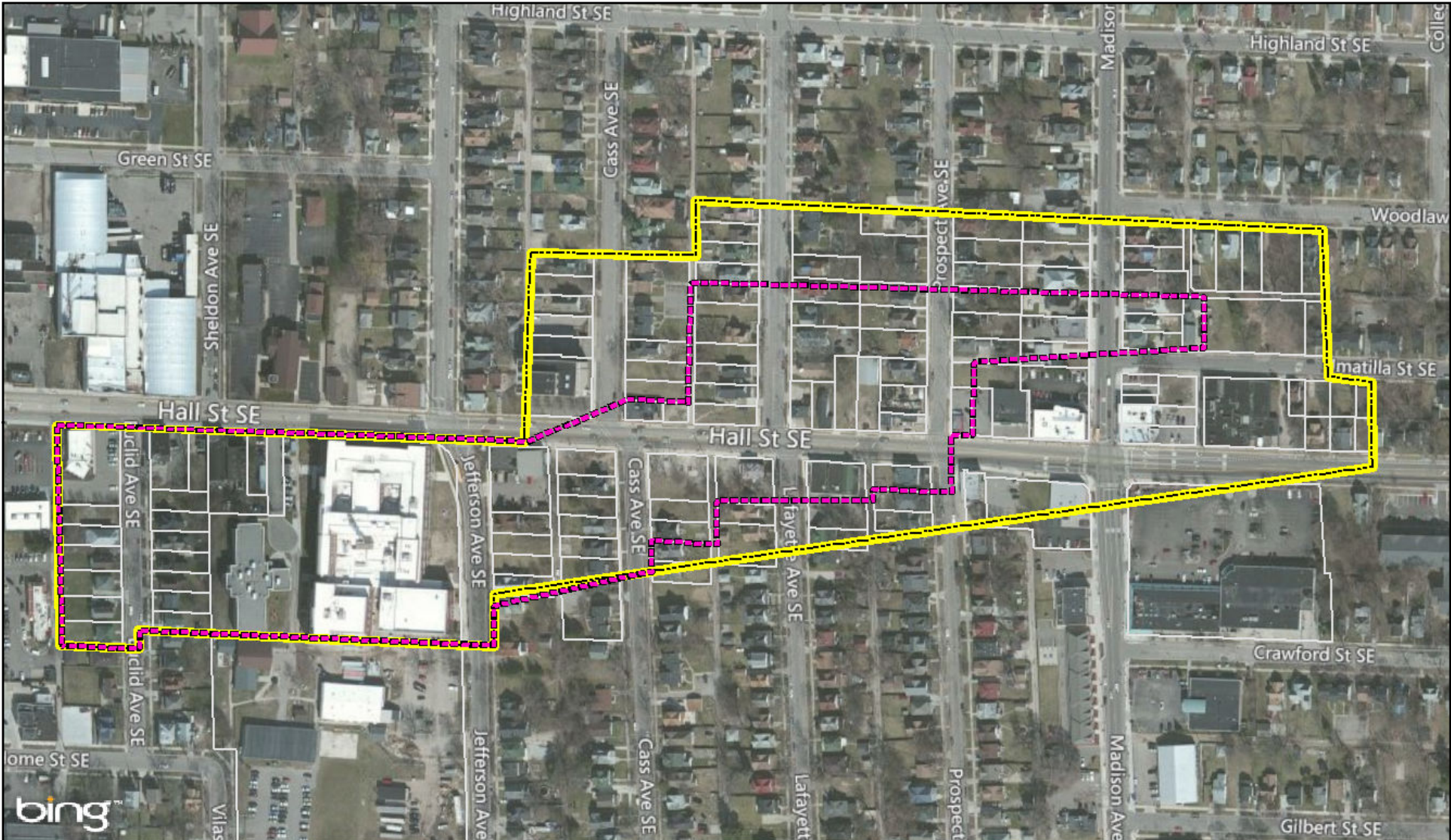


File Path: G:\GIG9026-START IV\Michigan\Grand Rapids V\mxd\2016-11\VaporIntrusionInvestigationArea1128.mxd



Grand Rapids VI
 1170 Madison Avenue, SE
 Grand Rapids, Kent County, Michigan

Vapor Intrusion Investigation Target Area
11-28-2016



Prepared For: EPA

Prepared By: Tetra Tech Inc.