

US EPA ARCHIVE DOCUMENT



Solutia Inc.
575 Maryville Centre Drive
St. Louis, Missouri 63141

Tel: 314-674-3312
Fax: 314-674-8808

gmrina@eastman.com

January 15, 2016

Ms. Carolyn Bury - LU-9J
U.S. EPA Region 5
Corrective Action Section
77 West Jackson Boulevard
Chicago, IL 60604-3507

Re: PCB Groundwater Quality Assessment Program
4th Quarter 2015 Data Report
Solutia Inc., W. G. Krummrich Plant, Sauget, IL

Dear Ms. Bury:

Enclosed please find the PCB Groundwater Quality Assessment Program 4th Quarter 2015 Data Report for Solutia Inc.'s W. G. Krummrich Plant, Sauget, IL.

If you have any questions or comments regarding this report, please contact me at (314) 674-3312 or gmrina@eastman.com

Sincerely,

A handwritten signature in blue ink, appearing to read "Gerald M. Rinaldi".

Gerald M. Rinaldi
Manager, Remediation Services

Enclosure

cc: Distribution List

DISTRIBUTION LIST

**PCB Groundwater Quality Assessment Program
4th Quarter 2015 Data Report
Solutia Inc., W. G. Krummrich Plant, Sauget, IL**

USEPA

Stephanie Linebaugh
USEPA Region 5 - SR6J, 77 West Jackson Boulevard, Chicago, IL 60604

Solutia

Donn Haines 500 Monsanto Avenue, Sauget, IL 62206-1198



GROUNDWATER MONITORING REPORT

PCB GROUNDWATER QUALITY
ASSESSMENT PROGRAM
SOLUTIA INC., W.G. KRUMMRICH FACILITY
SAUGET, ILLINOIS

Prepared For: Solutia Inc.
575 Maryville Centre Drive
St. Louis, MO 63141 USA

Submitted By: Golder Associates Inc.
820 S. Main Street, Suite 100
St. Charles, MO 63301 USA

January 2016

140-3345

A world of
capabilities
delivered locally





TABLE OF CONTENTS

- 1.0 INTRODUCTION..... 1
- 2.0 FIELD ACTIVITIES 2
 - 2.1 Water Level Measurement..... 2
 - 2.2 Groundwater Sample Collection 2
 - 2.3 Quality Assurance and Sample Handling 3
 - 2.4 Decontamination and Investigation Derived Waste 4
- 3.0 QUALITY ASSURANCE 4
- 4.0 OBSERVATIONS..... 5
 - 4.1 Shallow Hydrogeologic Unit 5
 - 4.2 Middle/Deep Hydrogeologic Unit..... 5
 - 4.3 Mann-Kendall Trend Analysis 5
- 5.0 CLOSING 6
- 6.0 REFERENCES..... 7

List of Figures

- Figure 1 Site Location Map
- Figure 2 Former PCB Manufacturing Area Monitoring Well Locations
- Figure 3 Potentiometric Surface Map Middle/Deep Hydrogeologic Unit
- Figure 4 PCB Results (SHU)
- Figure 5 PCB Results (MHU/DHU)

List of Tables

- Table 1 Monitoring Well Gauging Information
- Table 2 Groundwater Analytical Results
- Table 3 Mann-Kendall Trend Analysis

List of Appendices

- Appendix A Groundwater Purging and Sampling Forms
- Appendix B Chains-of-Custody
- Appendix C Quality Assurance Report
- Appendix D Groundwater Analytical Results (including data validation reports)

US EPA ARCHIVE DOCUMENT



1.0 INTRODUCTION

Golder Associates Inc. (Golder) is pleased to submit this report summarizing the 4th Quarter 2015 (4Q15) PCB groundwater sampling activities at the Solutia Inc. (Solutia) W.G. Krummrich (WGK) facility (Site) in Sauget, Illinois. The facility is located at 500 Monsanto Avenue, Sauget, Illinois as shown on Figure 1. The 4Q15 sampling event was performed in general accordance with the Revised PCB Groundwater Quality Assessment Program Work Plan (Work Plan) (Solutia 2009).

The scope of work detailed in the Work Plan is summarized below.

Ten (10) monitoring wells are sampled during the PCB event. The locations of the monitoring wells are shown on Figure 2 and the sample locations are included in the table below.

Area	Location Relative to Area	Sample Identification
Former PCB Manufacturing	Source Area Well	PMA-MW-4S
		PMA-MW-4D
	Downgradient	PMA-MW-1S
		PMA-MW-1M
		PMA-MW-2S
		PMA-MW-2M
		PMA-MW-3S
		PMA-MW-3M
		PMA-MW-5M
		PMA-MW-6D

Water levels in the monitoring wells are measured quarterly and total depths are measured in the 1st quarter of each year.

During the quarterly sampling events, monitoring wells are sampled for the following polychlorinated biphenyl (PCB) isomer groups or homologs: monochlorobiphenyl; dichlorobiphenyl; trichlorobiphenyl; tetrachlorobiphenyl; pentachlorobiphenyl; hexachlorobiphenyl; heptachlorobiphenyl; octachlorobiphenyl; nonachlorobiphenyl; and decachlorobiphenyl.

US EPA ARCHIVE DOCUMENT



2.0 FIELD ACTIVITIES

Golder conducted 4Q15 sampling events on November 12 and November 13, 2015. Activities were performed in general accordance with the Work Plan.

2.1 Water Level Measurement

Prior to sampling during the 4Q15 event, Golder performed a synoptic round of water level measurements at 77 monitoring wells and piezometers on October 29 and October 30, 2015. The following monitoring well and piezometer series are included in the PCB program:

- BSA-series
- CPA-series
- GM-series
- K-series
- PS-MW-series
- PMA-series
- Piezometer clusters installed for Sauget Area 2 RI/FS and WGK CA-750 Environmental Indicator projects

An oil/water interface probe was used to measure the water level (to 0.01 feet) and, if present, detect and measure the thickness of non-aqueous phase liquid (NAPL). During the 4Q15 sampling event, NAPL was not detected in monitoring wells or piezometers. Total depths are measured during the 1st quarter of each year. The 4Q15 well gauging information is shown on Table 1. The information collected from the Middle Hydrogeologic Unit (MHU) and the Deep Hydrogeologic Unit (DHU) was used to create a groundwater potentiometric surface map, as shown on Figure 3. The MHU and DHU are the primary migration pathways for constituents present in the groundwater at the Site.

2.2 Groundwater Sample Collection

Monitoring wells sampled during the 4Q15 PCB event were purged and sampled using low-flow sampling techniques, low-density polyethylene tubing (LDPE) and a submersible pump. The pump intake was placed at approximately the middle of the screened interval for each well. Purging was conducted at a rate of approximately 300 mL/min to reduce drawdown. Drawdown was measured throughout purging activities to ensure that it did not exceed 25% of the distance between the pump intake and the top of the screen. Measurement of field parameters began once the flow rate and drawdown were stable. Parameters were measured for each system volume purged using a SmartTROLL™ multi-parameter meter. The system volume includes the volume of the tubing, the volume of the pump and the volume of flow-through cell containing the multi-parameter device. Samples were collected after field parameters were stabilized within the ranges below for three (3) consecutive measurements:



- Dissolved Oxygen (DO): +/- 10% or +/- 0.2 mg/L, whichever is greatest
- Oxidation-Reduction Potential (ORP): +/- 20 mV
- pH: +/-0.2 standard units
- Specific Conductivity: +/- 3%

The flow rate was adjusted as needed to maintain approximately 300 mL/min during sampling activities. To reduce possible sample cross contamination, the flow-through cell was bypassed and gloves were replaced prior to sampling.

Sample bottles were provided by TestAmerica Laboratories, Inc. (TestAmerica) for analysis of PCBs by United States Environmental Protection Agency (USEPA) Method 680. Groundwater purging and sampling forms are included in Appendix A.

2.3 Quality Assurance and Sample Handling

One (1) analytical duplicate (AD), one (1) equipment blank (EB) and one (1) matrix spike/matrix spike duplicate (MS/MSD) pair were collected during the 4Q15 PCB sampling event. Sample bottles were labeled with the date and time of sample collection, sampler initials, analysis requested, preservative used, and sample identification based on the following nomenclature "PMA-MW#-MMYY-QA/QC" where:

- "PMA" denotes "PCB Manufacturing Area" and "MW#" denotes monitoring well number
- "MMYY" denotes month and year of sampling quarter, e.g.: November (4th quarter), 2015 (1115)
- "QA/QC" denotes QA/QC sample
 - AD – Analytical Duplicate
 - EB – Equipment Blank
 - MS or MSD – Matrix Spike or Matrix Spike Duplicate

Sample information was recorded on a chain-of-custody (COC) that included project identification, sample identification, date and time of sample collection, analysis requested, preservative used, sample matrix and type, number of sample containers, sampler signature, and date COC was completed. Copies of the COCs are included in Appendix B.

Directly after sampling, sample bottles were placed in an iced cooler to maintain a sample temperature of approximately 4°C. Prior to sample shipment, samples and ice were placed inside two (2) contractor trash bags. The bags were tied and the cooler was sealed between the lid and sides with a signed and dated custody seal. Samples were shipped overnight via FedEx to the TestAmerica facility in Savannah, Georgia.



2.4 Decontamination and Investigation Derived Waste

Sampling equipment was decontaminated prior to mobilizing to the Site, between sample locations and prior to demobilizing from the Site. Non-dedicated sampling equipment was decontaminated between samples with a non-phosphatic detergent solution and a deionized water rinse.

Investigation derived waste (IDW) was placed in 55-gallon drums, labeled with the generation date and staged for disposal by Solutia. IDW such as gloves and other disposable sampling equipment was bagged for disposal by Solutia.

3.0 QUALITY ASSURANCE

Sample results were provided by the TestAmerica laboratory in electronic format and reviewed for quality and completeness by Golder in accordance with the Work Plan. Sample results are included in Appendix D. Results were submitted in two (2) sample delivery groups (SDGs) as follows:

Sample Delivery Group (SDG)	Sample Identification
KPM067	PMA-MW-1M-0515
	PMA-MW-1S-0515
	PMA-MW-2M-0515
	PMA-MW-2M-0515-AD
	PMA-MW-2S-0515
	PMA-MW-2S-0515-EB
	PMA-MW-5M-0515
	PMA-MW-6D-0515
KPM068	PMA-MW-3M-0515
	PMA-MW-3S-0515
	PMA-MW-4D-0515
	PMA-MW-4S-0515

Golder completed validation of the analytical data following the general guidelines in Section 3.4 Data Review and Validation of the Work Plan. The Work Plan specifies that the most recent version of the national data validation guidelines be used for data review. The following guidelines were generally used:

- USEPA Contract Laboratory Program National Functional Guidelines for Superfund Organic Methods Data Review, EPA-540-R-08-01, June 2008

Although some data required qualifications due to quality control criteria that were not achieved, the data were deemed usable. The completeness for the data set was 100%.

US EPA ARCHIVE DOCUMENT





4.0 OBSERVATIONS

Groundwater analytical data for the 4Q15 PCB event is discussed below and presented in Table 2. Sample results are also shown for the SHU and the MHU/DHU in Figures 4 and 5, respectively.

4.1 Shallow Hydrogeologic Unit

Historically, dense non-aqueous phase liquid (DNAPL) has been periodically detected in PMA-MW-4S, located in the former PCB Manufacturing Area. DNAPL was not detected in PMA-MW-4S during the 4Q15 event. A groundwater sample was collected at PMA-MW-4S and PCBs were detected at a concentration of 96 µg/L. PCBs were detected in one (1) of three (3) monitoring wells in the SHU downgradient of the former PCB Manufacturing Area (PMA-MW-3S) at a concentration of 0.69 µg/L. PCBs were not detected in monitoring wells PMA-MW-1S and PMA-MW-2S.

4.2 Middle/Deep Hydrogeologic Unit

PCBs were detected in five (5) of the six (6) monitoring wells located in the MHU and DHU. Results are summarized below.

- Former PCB Manufacturing Area: PCBs were detected at a concentration of 1.86 µg/L in PMA-MW-4D.
- Downgradient of Former PCB Manufacturing Area: PCBs were detected in four (4) of five (5) monitoring wells downgradient of the former PCB Manufacturing Area at concentrations of 0.61 µg/L (PMA-MW-1M), 9.5 µg/L / 10 µg/L (PMA-MW-2M and AD), 0.80 µg/L (PMA-MW-3M), and 0.19 µg/L (PMA-MW-6D). PCBs were not detected in PMA-MW-5M.

4.3 Mann-Kendall Trend Analysis

Mann-Kendall trend analyses of total PCBs in groundwater samples from select monitoring wells within (PMA-MW-4D) or downgradient (PMA-MW-1M, -2M, -3S, -3M, and -6D) of the former PCB Manufacturing Area were performed. Results are shown on Table 3. The trends using analytical data from the 4Q15 PCB event appeared similar to historical trends. There was an increasing trend in PCB concentrations at monitoring wells PMA-MW-1M, PMA-MW-2M, and PMA-MW-4D. Concentrations of PCBs show either no trend or stable at monitoring wells PMA-MW-3S, PMA-MW-3M, and PMA-MW-6D.



5.0 CLOSING

Golder appreciates the opportunity to assist Solutia Inc. with the PCB Groundwater Quality Assessment Program sampling events. Please contact the undersigned if you need additional information.

Sincerely,

GOLDER ASSOCIATES INC.

Amanda W. Derhake, Ph.D., P.E.
Senior Project Engineer

Mark N. Haddock, R.G., P.E.
Associate, Senior Consultant

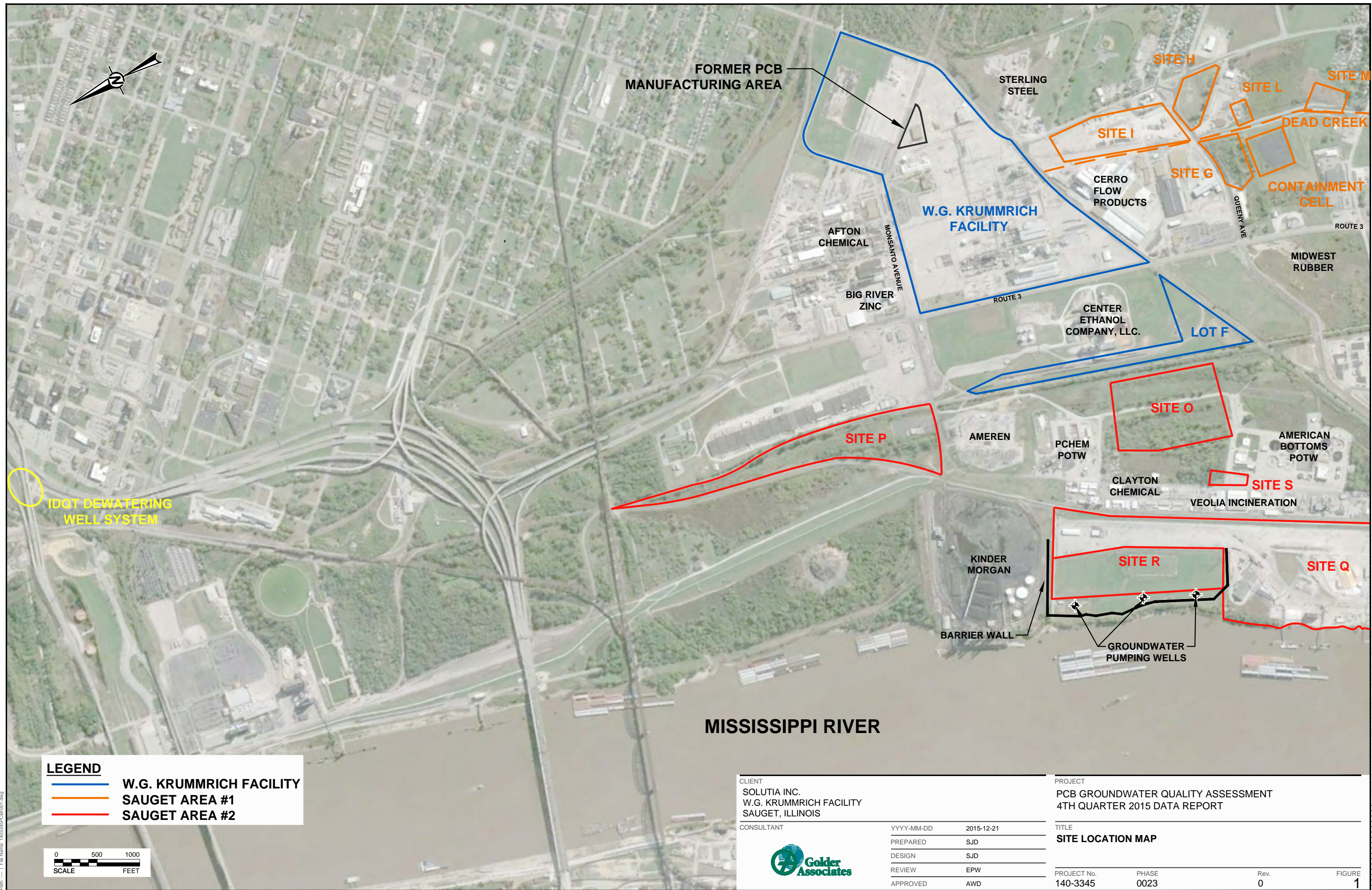


6.0 REFERENCES

Solutia Inc, 2009. Revised PCB Groundwater Quality Assessment Program Work Plan, W.G. Krummrich Facility, Sauget, IL, Prepared by URS Corporation, May 2009.

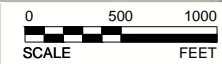
USEPA, 2008. Contract Laboratory Program national Functional Guidelines for Superfund Organic Methods Data Review.

FIGURES



LEGEND

- W.G. KRUMMRICH FACILITY
- SAUGET AREA #1
- SAUGET AREA #2



MISSISSIPPI RIVER

CLIENT
SOLUTIA INC.
W.G. KRUMMRICH FACILITY
SAUGET, ILLINOIS

CONSULTANT	YYYY-MM-DD	2015-12-21
PREPARED	SJD	
DESIGN	SJD	
REVIEW	EPW	
APPROVED	AWD	



PROJECT
PCB GROUNDWATER QUALITY ASSESSMENT
4TH QUARTER 2015 DATA REPORT

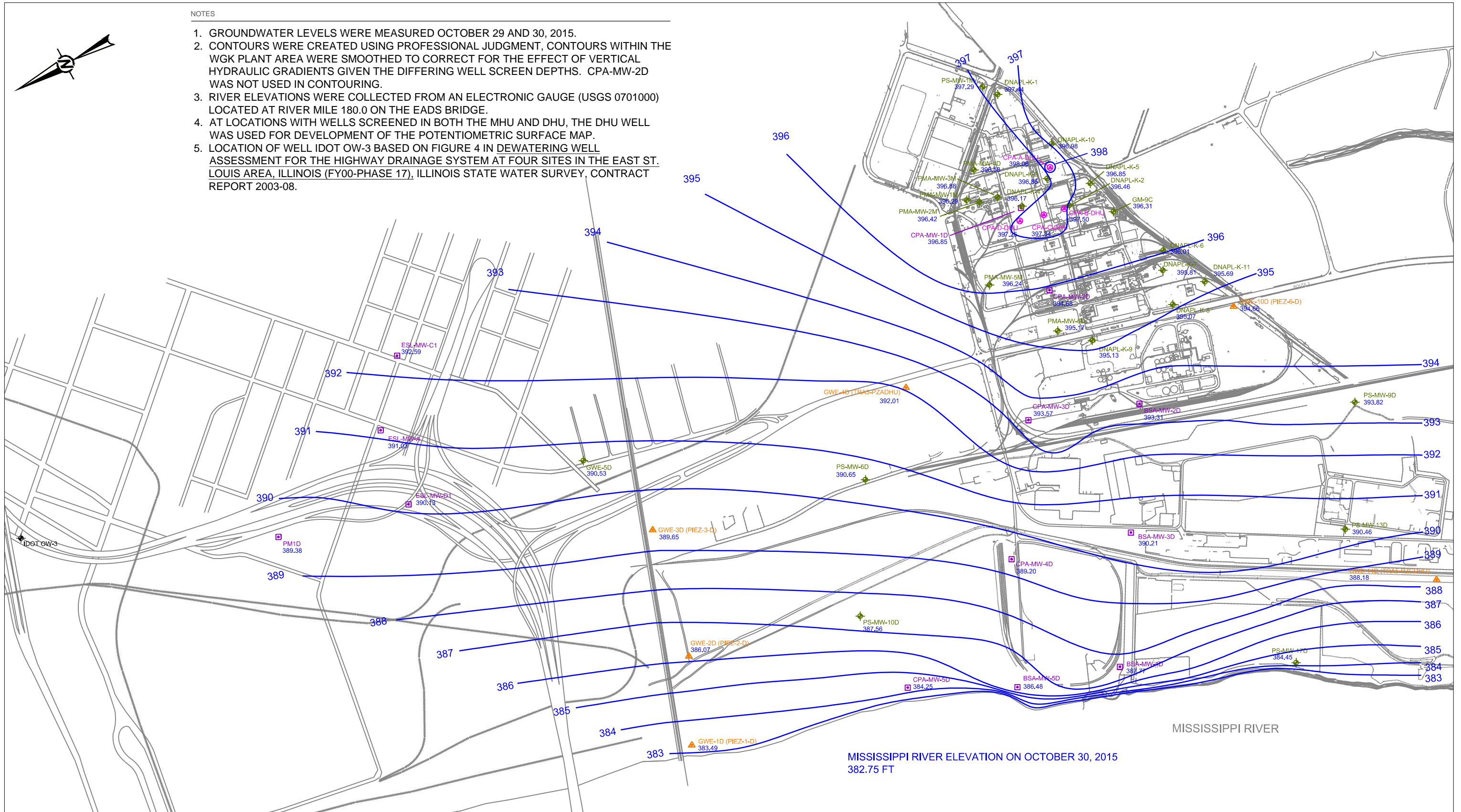
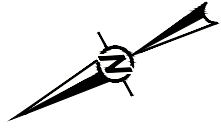
TITLE
SITE LOCATION MAP

PROJECT No.	PHASE	Rev.	FIGURE
140-3345	0023	0	1

IF THIS MEASUREMENT DOES NOT MATCH WHAT IS SHOWN, THE SHEET SIZE HAS BEEN MODIFIED FROM ANSI B

NOTES

1. GROUNDWATER LEVELS WERE MEASURED OCTOBER 29 AND 30, 2015.
2. CONTOURS WERE CREATED USING PROFESSIONAL JUDGMENT, CONTOURS WITHIN THE WGK PLANT AREA WERE SMOOTHED TO CORRECT FOR THE EFFECT OF VERTICAL HYDRAULIC GRADIENTS GIVEN THE DIFFERING WELL SCREEN DEPTHS. CPA-MW-2D WAS NOT USED IN CONTOURING.
3. RIVER ELEVATIONS WERE COLLECTED FROM AN ELECTRONIC GAUGE (USGS 0701000) LOCATED AT RIVER MILE 180.0 ON THE EADS BRIDGE.
4. AT LOCATIONS WITH WELLS SCREENED IN BOTH THE MHU AND DHU, THE DHU WELL WAS USED FOR DEVELOPMENT OF THE POTENTIOMETRIC SURFACE MAP.
5. LOCATION OF WELL IDOT OW-3 BASED ON FIGURE 4 IN DEWATERING WELL ASSESSMENT FOR THE HIGHWAY DRAINAGE SYSTEM AT FOUR SITES IN THE EAST ST. LOUIS AREA, ILLINOIS (FY00-PHASE 17), ILLINOIS STATE WATER SURVEY, CONTRACT REPORT 2003-08.



LEGEND

	LONG-TERM MONITORING WELL USED FOR GROUNDWATER CONTOURING
	OTHER MONITORING WELL USED FOR GROUNDWATER CONTOURING
	PIEZOMETER CLUSTER USED FOR GROUNDWATER CONTOURING
	CPA MONITORING WELL USED FOR GROUNDWATER CONTOURING
	IDOT GROUNDWATER WELL
	APPROXIMATE GROUNDWATER ELEVATION CONTOUR (FT NAVD)



CLIENT
SOLUTIA INC.
W.G. KRUMMRICH FACILITY
SAUGET, ILLINOIS

CONSULTANT	YYYY-MM-DD	2015-12-21
	PREPARED	SJD
	DESIGN	EPW
	REVIEW	EPW
	APPROVED	AWD

PROJECT
PCB GROUNDWATER QUALITY ASSESSMENT
4TH QUARTER 2015 DATA REPORT

TITLE
**POTENTIOMETRIC SURFACE MAP
MIDDLE/DEEP HYDROGEOLOGIC UNIT**

PROJECT No.	PHASE:	Rev.	FIGURE:
140-3345	0023	0	3

Path: ... \File Name: 1403345\FG\FG003.dwg




**FORMER PCB
MANUFACTURING AREA**

ANALYTE	4Q15 RESULTS
PCBs (unfiltered)	96.0

ANALYTE	4Q15 RESULTS
PCBs (unfiltered)	ND

ANALYTE	4Q15 RESULTS
PCBs (unfiltered)	ND

ANALYTE	4Q15 RESULTS
PCBs (unfiltered)	0.69

LEGEND
 PCB MONITORING WELL LOCATION

NOTES
 1. TOTAL PCB RESULTS INCLUDE THE SUM OF ALL METHOD 680 HOMOLOGS.
 2. RESULTS SHOWN ARE IN $\mu\text{g/L}$.
 3. ND - NOT DETECTED.



CLIENT
 SOLUTIA INC.
 W.G. KRUMMRICH FACILITY
 SAUGET, ILLINOIS

CONSULTANT	DATE
PREPARED	2015-12-21
DESIGN	SJD
REVIEW	SJD
APPROVED	EPW
	AWD



PROJECT
 PCB GROUNDWATER QUALITY ASSESSMENT
 4TH QUARTER 2015 DATA REPORT

TITLE
**PCB RESULTS
 SHALLOW HYDROGEOLOGIC UNIT**

PROJECT No.	PHASE:	Rev.	FIGURE:
140-3345	0023	0	4

Path: \\... | File Name: 1403345_PCB_SJD.dwg



**FORMER PCB
MANUFACTURING AREA**

PMA-MW-4D

ANALYTE	4Q15 RESULTS
PCBs (unfiltered)	1.86

PMA-MW-1M

ANALYTE	4Q15 RESULTS
PCBs (unfiltered)	0.61

PMA-MW-2M

ANALYTE	4Q15 RESULTS
PCBs (unfiltered)	9.5/10

PMA-MW-3M

ANALYTE	4Q15 RESULTS
PCBs (unfiltered)	0.80

PMA-MW-5M

ANALYTE	4Q15 RESULTS
PCBs (unfiltered)	ND

PMA-MW-6D

ANALYTE	4Q15 RESULTS
PCBs (unfiltered)	0.19

LEGEND



PCB MONITORING WELL LOCATION

NOTES

1. TOTAL PCB RESULTS INCLUDE THE SUM OF ALL METHOD 680 HOMOLOGS.
2. RESULTS SHOWN ARE IN $\mu\text{g/L}$.
3. ND - NOT DETECTED.
4. MULTIPLE SAMPLE RESULTS INDICATE DUPLICATE SAMPLES.



CLIENT
SOLUTIA INC.
W.G. KRUMMRICH FACILITY
SAUGET, ILLINOIS

CONSULTANT



YYYY-MM-DD 2015-12-21

PREPARED SJD

DESIGN SJD

REVIEW EPW

APPROVED AWD

PROJECT
PCB GROUNDWATER QUALITY ASSESSMENT
4TH QUARTER 2015 DATA REPORT

TITLE
**PCB RESULTS
MIDDLE/DEEP HYDROGEOLOGIC UNIT**

PROJECT No.
140-3345

PHASE
0023

Rev.
0

FIGURE
5

TABLES

Table 1
Monitoring Well Gauging Information
4Q15 PCB Groundwater Quality Assurance Program
Solutia Inc., W.G. Krummrich Facility
Sauget, Illinois

Well Identification	Monitoring Well Construction Data						4Q15 - October 29 and 30, 2015			
	Ground Surface Elevation ¹ (ft)	Top of Casing Elevation ¹ (ft)	Top of Screen Depth (ft bgs)	Bottom of Screen Depth (ft bgs)	Top of Screen Elevation ¹ (ft)	Bottom of Screen Elevation ¹ (ft)	Water Level (ft btoc)	Depth to NAPL (ft btoc)	Total Depth ² (ft btoc)	Water Level Elevation ¹ (ft)
SHU 395-380 ft NAVD 88										
PMA-MW-1S	410.30	410.06	20.18	25.18	390.12	385.12	12.73	NP	24.93	397.33
PMA-MW-2S	412.27	411.66	22.94	27.94	389.33	384.33	15.45	NP	27.34	396.21
PMA-MW-3S	412.37	412.06	22.71	27.71	389.66	384.66	15.40	NP	27.40	396.66
PMA-MW-4S	411.09	410.43	20.99	25.99	390.10	385.10	13.52	NP	25.38	396.91
MHU 380-350 ft NAVD 88										
PMA-MW-1M	410.32	410.08	54.54	59.54	355.78	350.78	13.79	NP	59.60	396.29
PMA-MW-2M	412.26	411.93	56.87	61.87	355.39	350.39	15.51	NP	61.27	396.42
PMA-MW-3M	412.36	412.10	57.07	62.07	355.29	350.29	15.22	NP	61.81	396.88
PMA-MW-5M	411.27	410.97	52.17	57.17	359.10	354.10	14.73	NP	56.98	396.24
PS-MW-1M	409.37	412.59	37.78	42.78	371.59	366.59	15.30	NP	46.05	397.29
DHU 350 ft NAVD 88 - Bedrock										
BSA-MW-2D	412.00	415.13	68.92	73.92	343.08	338.08	21.82	NP	77.00	393.31
BSA-MW-3D	412.91	415.74	107.02	112.02	305.89	300.89	25.53	NP	114.75	390.21
BSA-MW-4D	425.00	424.69	118.54	123.54	306.46	301.46	36.92	NP	123.12	387.77
BSA-MW-5D	420.80	420.49	115.85	120.85	304.95	299.95	34.01	NP	120.89	386.48
CPA-MW-1D	408.62	412.23	66.12	71.12	342.50	337.50	15.38	NP	74.69	396.85
CPA-MW-2D	408.51	408.20	99.96	104.96	308.55	303.55	13.52	NP	104.56	394.68
CPA-MW-3D	410.87	410.67	108.20	113.20	302.67	297.67	17.10	NP	112.76	393.57
CPA-MW-4D	421.57	421.20	116.44	121.44	305.13	300.13	32.00	NP	120.98	389.20
CPA-MW-5D	411.03	413.15	107.63	112.63	303.40	298.40	28.90	NP	114.64	384.25
DNAPL-K-1	413.07	415.56	108.20	123.20	304.87	289.87	18.12	NP	123.10	397.44
DNAPL-K-2	407.94	407.72	97.63	112.63	310.31	295.31	11.26	NP	112.40	396.46
DNAPL-K-3	412.13	415.91	104.80	119.80	307.33	292.33	19.06	NP	123.28	396.85
DNAPL-K-4	409.48	412.53	102.55	117.55	306.93	291.93	16.36	NP	118.21	396.17
DNAPL-K-5	412.27	411.91	102.15	117.15	310.12	295.12	15.06	NP	116.54	396.85
DNAPL-K-6	410.43	410.09	102.47	117.47	307.96	292.96	14.08	NP	116.87	396.01
DNAPL-K-7	408.32	407.72	100.40	115.40	307.92	292.92	11.91	NP	115.31	395.81
DNAPL-K-8	408.56	411.38	102.65	117.65	305.91	290.91	16.31	NP	117.56	395.07
DNAPL-K-9	406.45	405.97	97.42	112.42	309.03	294.03	10.84	NP	111.05	395.13
DNAPL-K-10	413.50	413.25	105.43	120.43	308.07	293.07	16.27	NP	120.26	396.98
DNAPL-K-11	412.20	411.78	105.46	120.46	306.74	291.74	16.09	NP	120.18	395.69
GM-9C	409.54	411.21	88.00	108.00	321.54	301.54	14.90	NP	108.23	396.31
GWE-1D	412.80	415.60	117.00	127.00	295.80	285.80	32.11	NP	128.22	383.49
GWE-2D	417.45	417.14	127.00	137.00	290.45	280.45	31.07	NP	136.59	386.07
GWE-3D	415.03	417.66	104.60	114.60	313.06	303.06	28.01	NP	114.88	389.65
GWE-4D	406.05	405.74	74.00	80.00	332.05	326.05	13.73	NP	78.75	392.01
GWE-5D	408.79	408.38	100.43	105.43	308.36	303.36	17.85	NP	105.14	390.53
GWE-10D	410.15	412.87	102.50	112.50	307.65	297.65	18.21	NP	114.81	394.66
GWE-14D	420.47	422.90	90.00	96.00	330.47	324.47	34.72	NP	97.00	388.18
PMA-MW-4D	411.22	410.88	68.84	73.84	342.38	337.38	14.30	NP	73.38	396.58
PMA-MW-6D	407.63	407.32	96.49	101.49	311.14	306.14	12.15	NP	101.22	395.17
PS-MW-6D	404.11	406.63	102.32	107.32	304.31	299.31	15.98	NP	109.81	390.65
PS-MW-9D	403.92	403.52	100.40	105.40	303.52	298.52	9.70	NP	105.00	393.82
PS-MW-10D	409.63	412.18	103.78	108.78	308.40	303.40	24.62	NP	111.25	387.56
PS-MW-13D	405.80	405.53	106.08	111.08	299.72	294.72	15.07	NP	110.55	390.46
PS-MW-17D	420.22	423.26	121.25	126.25	298.97	293.97	38.81	NP	133.90	384.45

Notes

- ft - feet
- bgs - below ground surface
- btoc - below top of casing
- NP - no product observed
- NR - not reported
- SHU - shallow hydrogeologic unit
- MHU - middle hydrogeologic unit
- DHU - deep hydrogeologic unit

¹ - Elevations based on North American Vertical Datum (NAVD) 88 datum.
² - Total depths are measured annually during the first quarter of each year.

Prepared By: SJD 12/11/2015
Checked By: EPW 12/21/2015
Reviewed By: AWD 1/8/2016

Table 2
Groundwater Analytical Results
4Q15 PCB Groundwater Quality Assurance Program
Solutia Inc., W.G. Krummrich Facility
Sauget, Illinois

Sample Identification	Sample Date	PCBs (µg/L)									
		Monochlorobiphenyl	Dichlorobiphenyl	Trichlorobiphenyl	Tetrachlorobiphenyl	Pentachlorobiphenyl	Hexachlorobiphenyl	Heptachlorobiphenyl	Octachlorobiphenyl	Nonachlorobiphenyl	Decachlorobiphenyl
SHU											
PMA-MW-1S-1115	11/12/2015	<0.099	<0.099	<0.099	<0.20	<0.20	<0.20	<0.30	<0.30	<0.50	<0.50
PMA-MW-2S-1115	11/12/2015	<0.10	<0.10	<0.10	<0.20	<0.20	<0.20	<0.30	<0.30	<0.50	<0.50
PMA-MW-3S-1115	11/13/2015	0.50	0.19	<0.098	<0.20	<0.20	<0.20	<0.29	<0.29	<0.49	<0.49
PMA-MW-4S-1115	11/13/2015	2.8 D	12 D	19 D	18 D	11 D	16 D	15 D	2.2 D	<2.5	<2.5
MHU/DHU											
PMA-MW-1M-1115	11/12/2015	0.61	<0.10	<0.10	<0.20	<0.20	<0.20	<0.31	<0.31	<0.51	<0.51
PMA-MW-2M-1115	11/12/2015	9.5 D	<0.49	<0.49	<0.98	<0.98	<0.98	<1.5	<1.5	<2.4	<2.4
PMA-MW-2M-1115-AD	11/12/2015	10 D	<0.52	<0.52	<1.0	<1.0	<1.0	<1.5	<1.5	<2.6	<2.6
PMA-MW-3M-1115	11/13/2015	0.80	<0.10	<0.10	<0.20	<0.20	<0.20	<0.30	<0.30	<0.50	<0.50
PMA-MW-4D-1115	11/13/2015	0.92	0.94	<0.099	<0.20	<0.20	<0.20	<0.30	<0.30	<0.49	<0.49
PMA-MW-5M-1115	11/12/2015	<0.099	<0.099	<0.099	<0.20	<0.20	<0.20	<0.30	<0.30	<0.49	<0.49
PMA-MW-6D-1115	11/12/2015	0.19	<0.10	<0.10	<0.20	<0.20	<0.20	<0.30	<0.30	<0.51	<0.51

Notes

PCBs - polychlorinated biphenyls

µg/L - micrograms per liter

< - result is non-detect, less than the reporting limit

D - compound is analyzed at a dilution; result is an estimated value

AD - analytical duplicate

Bold - indicates concentration greater than reporting limit

SHU - shallow hydrogeologic unit

MHU - middle hydrogeologic unit

DHU - deep hydrogeologic unit

Prepared By: SJD 12/22/2015

Checked By: JSI 1/7/2016

Reviewed By: AWD 1/8/2016

Table 3
Mann-Kendall Trend Analysis
4Q15 PCB Groundwater Quality Assessment Program
W.G. Krummrich Facility
Sauget, IL

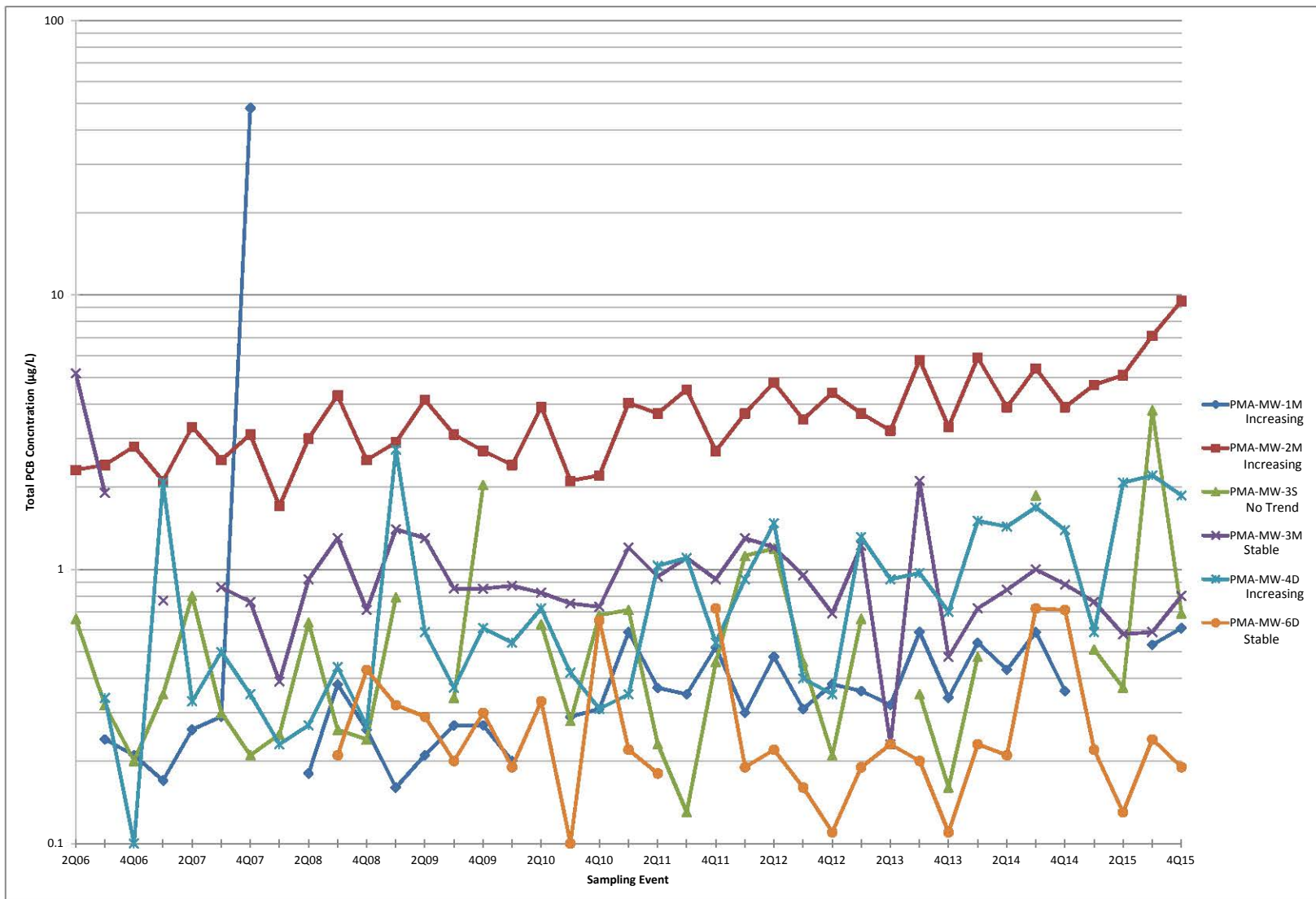
Event Number	Quarter	Total PCB Concentration (µg/L)					
		PMA-MW-1M	PMA-MW-2M	PMA-MW-3S	PMA-MW-3M	PMA-MW-4D	PMA-MW-6D
1	2Q06	ND	2.3	0.66	5.18	NA	NA
2	3Q06	0.24	2.4	0.32	1.90	0.34	NA
3	4Q06	0.21	2.8	0.20	ND	0.10	NA
4	1Q07	0.17	2.1	0.35	0.77	2.07	NA
5	2Q07	0.26	3.3	0.80	ND	0.33	NA
6	3Q07	0.29	2.5	0.30	0.86	0.50	NA
7	4Q07	48	3.1	0.21	0.76	0.35	NA
8	1Q08	ND	1.7	0.25	0.39	0.23	NA
9	2Q08	0.18	3.0	0.64	0.92	0.27	NA
10	3Q08	0.38	4.3	0.26	1.30	0.44	0.21
11	4Q08	0.26	2.5	0.24	0.71	0.27	0.43
12	1Q09	0.16	2.9	0.79	1.40	2.73	0.32
13	2Q09	0.21	4.14	ND	1.30	0.59	0.29
14	3Q09	0.27	3.1	0.34	0.85	0.37	0.20
15	4Q09	0.27	2.7	2.03	0.85	0.61	0.30
16	1Q10	0.20	2.4	ND	0.87	0.54	0.19
17	2Q10	ND	3.9	0.63	0.82	0.72	0.33
18	3Q10	0.29	2.1	0.28	0.75	0.42	0.10
19	4Q10	0.31	2.199	0.68	0.73	0.31	0.65
20	1Q11	0.59	4.04	0.71	1.20	0.35	0.22
21	2Q11	0.37	3.7	0.23	0.94	1.03	0.18
22	3Q11	0.35	4.52	0.13	1.10	1.10	ND
23	4Q11	0.52	2.7	0.46	0.92	0.54	0.72
24	1Q12	0.30	3.7	1.12	1.30	0.92	0.19
25	2Q12	0.48	4.79	1.19	1.20	1.47	0.22
26	3Q12	0.31	3.52	0.46	0.95	0.40	0.16
27	4Q12	0.38	4.4	0.21	0.69	0.35	0.11
28	1Q13	0.36	3.7	0.66	1.22	1.31	0.19
29	2Q13	0.32	3.2	ND	0.23	0.92	0.23
30	3Q13	0.59	5.8	0.35	2.10	0.97	0.20
31	4Q13	0.34	3.3	0.16	0.48	0.70	0.11
32	1Q14	0.54	5.9	0.48	0.72	1.50	0.23
33	2Q14	0.43	3.9	ND	0.84	1.43	0.21
34	3Q14	0.59	5.4	1.86	1.00	1.68	0.72
35	4Q14	0.36	3.9	ND	0.88	1.39	0.71
36	1Q15	ND	4.7	0.51	0.76	0.59	0.22
37	2Q15	ND	5.1	0.37	0.58	2.07	0.13
38	3Q15	0.53	7.1	3.8	0.59	2.2	0.24
39	4Q15	0.61	9.5	0.69	0.80	1.86	0.19
Coefficient of Variation		4.66	0.40	1.07	0.84	0.74	0.65
Mann-Kendall Statistic (S)		234	316	46	-86	276	-34
Confidence in Trend ¹		>99.9%	>99.9%	76.6%	88.6%	>99.9%	75.3%
Concentration Trend		Increasing	Increasing	No Trend	Stable	Increasing	Stable

Notes

NA - not analyzed
 ND - non-detect (values detected below the detection limit)
¹ - confidence (in percent) that constituent concentration is increasing (S>0) or decreasing (S<0)
 > 90% - probably increasing or decreasing
 > 95% - Increasing or Decreasing
 Data from 2Q06 to 1Q14 was compiled by former consultant

Prepared By: SJD 12/22/2015
 Checked By: EPW 12/23/2015
 Reviewed By: AWD 1/8/2016

Table 3
 Mann-Kendall Trend Analysis
 4Q15 PCB Groundwater Quality Assessment Program
 W.G. Krummrich Facility
 Sauget, IL



**APPENDIX A
GROUNDWATER PURGING AND SAMPLING FORMS**

Project Information:

Operator Name EPW
Company Name Golder Associates
Project Name W.G. Krummrich
Site Name PCB

Pump Information:

Pump Model/Type SS Monsoon
Tubing Type LDPE
Tubing Diameter 0.19 in
Tubing Length 28.44 ft
Pump Placement from TOC 22.43 ft

Well Information:

Well Id PMA-MW-1S
Well Diameter 2 in
Well Total Depth 24.93 ft
Depth to Top of Screen 19.93 ft
Screen Length 5 ft
Depth to Water 12.73 ft

Pumping Information:

Final Pumping Rate 300 mL/min
System Volume 349 mL
Calculated Sample Rate 69 sec
Sample Rate 69 sec
Stabilized Drawdown 0.02 ft

Low-Flow Sampling Stabilization Summary

	Time	Temp [C]	pH [pH]	Cond [μ S/cm]	Turb [NTU]	RDO [mg/L]	ORP [mV]
Stabilization Settings			+/-0.2	+/-0.1 +/-3%	+/-1 +/-10%	+/-0.2 +/-10%	+/-20
Last 5 Readings	15:19:22	18.61	7.57	1184.38	1.83	0.41	25.62
	15:20:11	18.81	7.54	1172.71	2.00	0.34	28.60
	15:21:00	19.04	7.51	1170.88	1.69	0.33	30.72
	15:21:49	19.21	7.49	1176.73	1.69	0.30	32.37
	15:22:38	19.30	7.47	1184.88	1.74	0.29	33.74
Variance in Last 3 Readings		0.23	-0.03	-1.83	-0.31	-0.01	2.12
		0.17	-0.02	5.85	0.00	-0.03	1.65
		0.09	-0.02	8.15	0.05	-0.01	1.37

Notes:

US EPA ARCHIVE DOCUMENT

Project Information:

Operator Name EPW
Company Name Golder Associates
Project Name W.G. Krummrich
Site Name PCB

Pump Information:

Pump Model/Type SS Monsoon
Tubing Type LDPE
Tubing Diameter 0.19 in
Tubing Length 62.80 ft
Pump Placement from TOC 57.10 ft

Well Information:

Well Id PMA-MW-1M
Well Diameter 2 in
Well Total Depth 59.60 ft
Depth to Top of Screen 54.60 ft
Screen Length 5 ft
Depth to Water 13.78 ft

Pumping Information:

Final Pumping Rate 300 mL/min
System Volume 540 mL
Calculated Sample Rate 108 sec
Sample Rate 108 sec
Stabilized Drawdown 0.00 ft

Low-Flow Sampling Stabilization Summary

	Time	Temp [C]	pH [pH]	Cond [μ S/cm]	Turb [NTU]	RDO [mg/L]	ORP [mV]
Stabilization Settings			+/-0.2	+/-0.1 +/-3%	+/-1 +/-10%	+/-0.2 +/-10%	+/-20
Last 5 Readings	14:48:54	18.19	7.40	2170.08	3.68	0.12	-7.62
	14:50:22	18.18	7.36	2169.04	3.83	0.11	-21.05
	14:51:50	18.15	7.33	2164.47	2.61	0.09	-31.88
	14:53:18	18.13	7.31	2165.61	2.34	0.09	-42.42
	14:54:48	18.11	7.29	2167.88	2.04	0.08	-51.54
Variance in Last 3 Readings		-0.03	-0.03	-4.57	-1.22	-0.02	-10.83
		-0.02	-0.02	1.14	-0.27	0.00	-10.54
		-0.02	-0.02	2.27	-0.30	-0.01	-9.12

Notes:

US EPA ARCHIVE DOCUMENT

Project Information:

Operator Name EPW
 Company Name Golder Associates
 Project Name W.G. Krummrich
 Site Name PCB

Pump Information:

Pump Model/Type SS Monsoon
 Tubing Type LDPE
 Tubing Diameter 0.19 in
 Tubing Length 30.83 ft
 Pump Placement from TOC 24.84 ft

Well Information:

Well Id PMA-MW-2S
 Well Diameter 2 in
 Well Total Depth 27.34 ft
 Depth to Top of Screen 22.34 ft
 Screen Length 5 ft
 Depth to Water 12.73 ft

Pumping Information:

Final Pumping Rate 300 mL/min
 System Volume 362 mL
 Calculated Sample Rate 72 sec
 Sample Rate 72 sec
 Stabilized Drawdown 0.00 ft

Low-Flow Sampling Stabilization Summary

	Time	Temp [C]	pH [pH]	Cond [μ S/cm]	Turb [NTU]	RDO [mg/L]	ORP [mV]
Stabilization Settings			+/-0.2	+/-0.1 +/-3%	+/-1 +/-10%	+/-0.2 +/-10%	+/-20
Last 5 Readings	16:37:24	18.39	7.58	1575.29	15.90	0.22	21.78
	16:38:16	18.51	7.56	1561.57	13.90	0.23	24.49
	16:39:08	18.68	7.54	1532.56	11.70	0.27	26.55
	16:40:01	18.77	7.51	1505.76	10.40	0.30	28.49
	16:41:02	18.81	7.49	1493.47	8.23	0.33	30.77
Variance in Last 3 Readings		0.17	-0.02	-29.01	-2.20	0.04	2.06
		0.09	-0.03	-26.80	-1.30	0.03	1.94
		0.04	-0.02	-12.29	-2.17	0.03	2.28

Notes:

US EPA ARCHIVE DOCUMENT

Project Information:

Operator Name EPW
Company Name Golder Associates
Project Name W.G. Krummrich
Site Name PCB

Pump Information:

Pump Model/Type SS Monsoon
Tubing Type LDPE
Tubing Diameter 0.19 in
Tubing Length 65.04 ft
Pump Placement from TOC 58.77 ft

Well Information:

Well Id PMA-MW-2M
Well Diameter 2 in
Well Total Depth 61.27 ft
Depth to Top of Screen 56.27 ft
Screen Length 5 ft
Depth to Water 15.51 ft

Pumping Information:

Final Pumping Rate 300 mL/min
System Volume 553 mL
Calculated Sample Rate 110 sec
Sample Rate 110 sec
Stabilized Drawdown 0.00 ft

Low-Flow Sampling Stabilization Summary

	Time	Temp [C]	pH [pH]	Cond [μ S/cm]	Turb [NTU]	RDO [mg/L]	ORP [mV]
Stabilization Settings			+/-0.2	+/-0.1 +/-3%	+/-1 +/-10%	+/-0.2 +/-10%	+/-20
Last 5 Readings	15:57:23	17.60	7.25	2167.45	4.86	0.30	19.42
	15:58:53	17.70	7.24	2198.32	5.85	0.18	5.18
	16:00:23	17.79	7.23	2194.65	6.22	0.14	-6.25
	16:01:53	17.79	7.23	2195.07	5.90	0.12	-16.32
	16:03:24	17.80	7.23	2192.10	4.30	0.10	-25.57
Variance in Last 3 Readings		0.09	-0.01	-3.67	0.37	-0.04	-11.43
		0.00	0.00	0.42	-0.32	-0.02	-10.07
		0.01	0.00	-2.97	-1.60	-0.02	-9.25

Notes:

US EPA ARCHIVE DOCUMENT

Project Information:

Operator Name EPW
Company Name Golder Associates
Project Name W.G. Krummrich
Site Name PCB

Pump Information:

Pump Model/Type SS Monsoon
Tubing Type LDPE
Tubing Diameter 0.19 in
Tubing Length 30.90 ft
Pump Placement from TOC 24.90 ft

Well Information:

Well Id PMA-MW-3S
Well Diameter 2 in
Well Total Depth 27.40 ft
Depth to Top of Screen 22.40 ft
Screen Length 5 ft
Depth to Water 15.40 ft

Pumping Information:

Final Pumping Rate 300 mL/min
System Volume 362 mL
Calculated Sample Rate 72 sec
Sample Rate 72 sec
Stabilized Drawdown 0.01 ft

Low-Flow Sampling Stabilization Summary

	Time	Temp [C]	pH [pH]	Cond [μ S/cm]	Turb [NTU]	RDO [mg/L]	ORP [mV]
Stabilization Settings			+/-0.2	+/-0.1 +/-3%	+/-1 +/-10%	+/-0.2 +/-10%	+/-20
Last 5 Readings	10:45:37	20.32	7.73	2281.48	21.90	0.16	125.67
	10:46:29	20.24	7.69	2277.68	16.20	0.09	137.92
	10:47:25	20.14	7.64	2280.57	11.00	0.07	147.84
	10:48:18	20.14	7.61	2279.90	10.30	0.07	157.42
	10:49:12	20.11	7.59	2285.74	7.97	0.07	164.39
Variance in Last 3 Readings		-0.10	-0.05	2.89	-5.20	-0.02	9.92
		0.00	-0.03	-0.67	-0.70	0.00	9.58
		-0.03	-0.02	5.84	-2.33	0.00	6.97

Notes:

US EPA ARCHIVE DOCUMENT

Project Information:

Operator Name EPW
 Company Name Golder Associates
 Project Name W.G. Krummrich
 Site Name PCB

Pump Information:

Pump Model/Type SS Monsoon
 Tubing Type LDPE
 Tubing Diameter 0.19 in
 Tubing Length 75.31 ft
 Pump Placement from TOC 59.31 ft

Well Information:

Well Id PMA-MW-3M
 Well Diameter 2 in
 Well Total Depth 61.81 ft
 Depth to Top of Screen 56.81 ft
 Screen Length 5 ft
 Depth to Water 15.22 ft

Pumping Information:

Final Pumping Rate 300 mL/min
 System Volume 610 mL
 Calculated Sample Rate 121 sec
 Sample Rate 121 sec
 Stabilized Drawdown 0.00 ft

Low-Flow Sampling Stabilization Summary

	Time	Temp [C]	pH [pH]	Cond [μ S/cm]	Turb [NTU]	RDO [mg/L]	ORP [mV]
Stabilization Settings			+/-0.2	+/-0.1 +/-3%	+/-1 +/-10%	+/-0.2 +/-10%	+/-20
Last 5 Readings	10:13:44	18.79	8.01	2172.70	4.28	0.07	-52.45
	10:15:25	18.86	8.08	2168.79	3.61	0.05	-50.97
	10:17:06	18.95	8.12	2169.99	3.17	0.04	-48.16
	10:18:47	19.08	8.15	2161.22	1.27	0.03	-43.88
	10:20:28	19.16	8.16	2164.29	3.51	0.02	-38.54
Variance in Last 3 Readings		0.09	0.04	1.20	-0.44	-0.01	2.81
		0.13	0.03	-8.77	-1.90	-0.01	4.28
		0.08	0.01	3.07	2.24	-0.01	5.34

Notes:
US EPA ARCHIVE DOCUMENT

Project Information:

Operator Name EPW
Company Name Golder Associates
Project Name W.G. Krummrich
Site Name PCB

Pump Information:

Pump Model/Type SS Monsoon
Tubing Type LDPE
Tubing Diameter 0.19 in
Tubing Length 25.88 ft
Pump Placement from TOC 22.88 ft

Well Information:

Well Id PMA-MW-4S
Well Diameter 2 in
Well Total Depth 25.38 ft
Depth to Top of Screen 20.38 ft
Screen Length 5 ft
Depth to Water 13.52 ft

Pumping Information:

Final Pumping Rate 300 mL/min
System Volume 334 mL
Calculated Sample Rate 66 sec
Sample Rate 66 sec
Stabilized Drawdown 0.06 ft

Low-Flow Sampling Stabilization Summary

	Time	Temp [C]	pH [pH]	Cond [μ S/cm]	Turb [NTU]	RDO [mg/L]	ORP [mV]
Stabilization Settings			+/-0.2	+/-0.1 +/-3%	+/-1 +/-10%	+/-0.2 +/-10%	+/-20
Last 5 Readings	12:00:56	19.39	7.29	2423.13	9.45	0.08	46.19
	12:01:43	19.39	7.28	2549.67	8.81	0.07	44.80
	12:02:31	19.35	7.28	2633.66	9.72	0.06	43.57
	12:03:20	19.30	7.29	2655.08	8.23	0.06	41.50
	12:04:15	19.30	7.29	2703.16	8.71	0.05	38.75
Variance in Last 3 Readings		-0.04	0.00	83.99	0.91	-0.01	-1.23
		-0.05	0.01	21.42	-1.49	0.00	-2.07
		0.00	0.00	48.08	0.48	-0.01	-2.75

Notes:

US EPA ARCHIVE DOCUMENT

Project Information:

Operator Name EPW
 Company Name Golder Associates
 Project Name W.G. Krummrich
 Site Name PCB

Pump Information:

Pump Model/Type SS Monsoon
 Tubing Type LDPE
 Tubing Diameter 0.19 in
 Tubing Length 74.80 ft
 Pump Placement from TOC 70.88 ft

Well Information:

Well Id PMA-MW-4D
 Well Diameter 2 in
 Well Total Depth 73.38 ft
 Depth to Top of Screen 68.38 ft
 Screen Length 5 ft
 Depth to Water 14.30 ft

Pumping Information:

Final Pumping Rate 300 mL/min
 System Volume 607 mL
 Calculated Sample Rate 121 sec
 Sample Rate 121 sec
 Stabilized Drawdown 0.00 ft

Low-Flow Sampling Stabilization Summary

	Time	Temp [C]	pH [pH]	Cond [μ S/cm]	Turb [NTU]	RDO [mg/L]	ORP [mV]
Stabilization Settings			+/-0.2	+/-0.1 +/-3%	+/-1 +/-10%	+/-0.2 +/-10%	+/-20
Last 5 Readings	11:25:41	18.93	7.41	1812.52	2.01	0.06	17.40
	11:27:27	18.85	7.40	1828.38	2.02	0.06	2.62
	11:29:09	18.77	7.39	1823.28	1.92	0.06	-8.32
	11:30:51	18.61	7.39	1834.69	2.02	0.05	-17.61
	11:32:33	18.59	7.38	1839.95	1.88	0.05	-25.46
Variance in Last 3 Readings		-0.08	-0.01	-5.10	-0.10	0.00	-10.94
		-0.16	0.00	11.41	0.10	-0.01	-9.29
		-0.02	-0.01	5.26	-0.14	0.00	-7.85

Notes:

US EPA ARCHIVE DOCUMENT

Project Information:

Operator Name EPW
 Company Name Golder Associates
 Project Name W.G. Krummrich
 Site Name PCB

Pump Information:

Pump Model/Type SS Monsoon
 Tubing Type LDPE
 Tubing Diameter 0.19 in
 Tubing Length 60.37 ft
 Pump Placement from TOC 54.48 ft

Well Information:

Well Id PMA-MW-5M
 Well Diameter 2 in
 Well Total Depth 56.98 ft
 Depth to Top of Screen 51.98 ft
 Screen Length 5 ft
 Depth to Water 14.73 ft

Pumping Information:

Final Pumping Rate 300 mL/min
 System Volume 527 mL
 Calculated Sample Rate 105 sec
 Sample Rate 105 sec
 Stabilized Drawdown 0.00 ft

Low-Flow Sampling Stabilization Summary

	Time	Temp [C]	pH [pH]	Cond [μ S/cm]	Turb [NTU]	RDO [mg/L]	ORP [mV]
Stabilization Settings			+/-0.2	+/-0.1 +/-3%	+/-1 +/-10%	+/-0.2 +/-10%	+/-20
Last 5 Readings	14:00:04	18.37	7.31	2244.11	1.62	0.16	-31.41
	14:01:29	18.32	7.31	2257.78	1.25	0.13	-34.85
	14:04:21	18.27	7.29	2263.22	1.18	0.09	-37.81
	14:05:46	18.32	7.29	2261.73	1.44	0.07	-37.91
	14:07:13	18.32	7.28	2264.16	1.34	0.07	-38.43
Variance in Last 3 Readings		-0.05	-0.02	5.44	-0.07	-0.04	-2.96
		0.05	0.00	-1.49	0.26	-0.02	-0.10
		0.00	-0.01	2.43	-0.10	0.00	-0.52

Notes:

Project Information:

Operator Name EPW
 Company Name Golder Associates
 Project Name W.G. Krummrich
 Site Name PCB

Pump Information:

Pump Model/Type SS Monsoon
 Tubing Type LDPE
 Tubing Diameter 0.19 in
 Tubing Length 104.68 ft
 Pump Placement from TOC 98.72 ft

Well Information:

Well Id PMA-MW-6D
 Well Diameter 2 in
 Well Total Depth 101.22 ft
 Depth to Top of Screen 96.22 ft
 Screen Length 5 ft
 Depth to Water 12.15 ft

Pumping Information:

Final Pumping Rate 300 mL/min
 System Volume 774 mL
 Calculated Sample Rate 154 sec
 Sample Rate 154 sec
 Stabilized Drawdown 0.00 ft

Low-Flow Sampling Stabilization Summary

	Time	Temp [C]	pH [pH]	Cond [μ S/cm]	Turb [NTU]	RDO [mg/L]	ORP [mV]
Stabilization Settings			+/-0.2	+/-0.1 +/-3%	+/-1 +/-10%	+/-0.2 +/-10%	+/-20
Last 5 Readings	13:12:43	18.46	7.30	1046.34	2.46	0.22	-8.58
	13:14:57	18.46	7.27	1050.40	0.94	0.18	-18.79
	13:17:11	18.48	7.25	1052.36	0.98	0.15	-29.18
	13:19:35	18.47	7.24	1056.14	0.22	0.14	-39.17
	13:21:54	18.46	7.24	1057.57	1.24	0.12	-48.31
Variance in Last 3 Readings		0.02	-0.02	1.96	0.04	-0.03	-10.39
		-0.01	-0.01	3.78	-0.76	-0.01	-9.99
		-0.01	0.00	1.43	1.02	-0.02	-9.14

Notes:

US EPA ARCHIVE DOCUMENT

**APPENDIX B
CHAINS-OF-CUSTODY**

TestAmerica Savannah
5102 LaRoche Avenue

Chain of Custody Record

TestAmerica
THE LEADER IN ENVIRONMENTAL TESTING

Savannah, GA 31401
phone 912.354.7858 fax

Regulatory Program: EW NPDES RCR Other: Emily White

TestAmerica Laboratories, Inc.

Client Contact Golder Associates Inc. 820 South Main Street St Charles, MO 63301 (636) 724-9191 Phone (636) 724-9323 FAX Project Name: <u>2015 PCB GW Sampling-1403345</u> Site: <u>Solutia WG Krummrich Facility</u> P O # <u>42447936</u>		Project Manager: <u>Amanda Derhake</u> Tel/Fax: <u>636-724-9191</u>		Site Contact: <u>Lee Pinner</u> Lab Contact: <u>Michele Kersey</u>		Date: <u>11/12/15</u> Carrier: <u>FedEx</u>		COC No: _____ _____ of _____ COCs Sampler: <u>E. White</u> For Lab Use Only: Walk-in Client: _____ Lab Sampling: _____ Job / SDG No.: _____				
Analysis Turnaround Time <input checked="" type="checkbox"/> CALENDAR <input type="checkbox"/> WORKING TAT if different from Below Standard: <input type="checkbox"/> 2 <input type="checkbox"/> 1 week <input type="checkbox"/> 2 days <input type="checkbox"/> 1 day		Sample Identification		Sample Date	Sample Time	Sample Type (C=Comp, G=Grab)	Matrix	# of Cont.	Filtered Sample (Y/N)	Perform MS / MSD (Y/N)	Total PCBs by 680	Sample Specific Notes:
		<u>PMA-MW-6D-1115</u>		<u>11/12/15</u>	<u>1322</u>	<u>G</u>	<u>W</u>	<u>2</u>	<u>N</u>	<u>2</u>		<u>3 coolers</u>
		<u>PMA-MW-5M-1115</u>			<u>1408</u>			<u>2</u>	<u>N</u>	<u>2</u>		
		<u>PMA-MW-1M-1115</u>			<u>1455</u>			<u>2</u>	<u>N</u>	<u>2</u>		
		<u>PMA-MW-1S-1115</u>			<u>1522</u>			<u>2</u>	<u>N</u>	<u>2</u>		
		<u>PMA-MW-1S-1115-MS</u>			<u>1522</u>			<u>2</u>	<u>N</u>	<u>2</u>		
		<u>PMA-MW-1S-1115-MSB</u>			<u>1522</u>			<u>2</u>	<u>N</u>	<u>2</u>		
		<u>PMA-MW-2M-1115</u>			<u>1604</u>			<u>2</u>	<u>N</u>	<u>2</u>		
		<u>PMA-MW-2M-1115-AD</u>			<u>1604</u>			<u>2</u>	<u>N</u>	<u>2</u>		
		<u>PMA-MW-2S-1115</u>			<u>1624</u>			<u>2</u>	<u>N</u>	<u>2</u>		
		<u>PMA-MW-2S-1115-EB</u>			<u>1710</u>			<u>2</u>	<u>N</u>	<u>2</u>		
Preservation Used: <u>1= Ice, 2= HCl, 3= H2SO4, 4= HNO3, 5= NaOH, 6= Other</u>		Possible Hazard Identification: Are any samples from a listed EPA Hazardous Waste? Please List any EPA Waste Codes for the sample in the Comments Section if the lab is to dispose of the sample.		Sample Disposal (A fee may be assessed if samples are retained longer than 1 month) <input type="checkbox"/> Return to Client <input checked="" type="checkbox"/> Disposal by Lab <input type="checkbox"/> Archive for _____ Months								
<input checked="" type="checkbox"/> Non-Hazard <input type="checkbox"/> Flammab <input type="checkbox"/> Skin <input type="checkbox"/> Poison B <input type="checkbox"/> Unknown		Special Instructions/QC Requirements & Comments: <u>0.0/0.4 3.6/4.0 0.4/0.8</u>										
Custody Seals Intact: <input type="checkbox"/> Yes <input type="checkbox"/> No		Custody Seal No.: <u>800716/800897/300098</u>		Cooler Temp. (°C): <u>6.6</u>		Cont'd: _____		Therm ID No.: _____				
Relinquished by: <u>Emily White</u>		Company: <u>Golder</u>		Date/Time: <u>11/12/15</u>		Received by: <u>[Signature]</u>		Company: <u>TA</u>		Date/Time: <u>11-13-15 9:34</u>		
Relinquished by: _____		Company: _____		Date/Time: _____		Received by: _____		Company: _____		Date/Time: _____		
Relinquished by: _____		Company: _____		Date/Time: _____		Received in Laboratory by: _____		Company: _____		Date/Time: _____		



TestAmerica Savannah

5102 LaRoche Avenue

Savannah, GA 31404
phone 912.354.7858 fax

Chain of Custody Record

TestAmerica

THE LEADER IN ENVIRONMENTAL TESTING

TestAmerica Laboratories, Inc.

Regulatory Program: DV NPDE RCR Other: Family White

Client Contact Golder Associates Inc. 820 South Main Street St. Charles, MO 63301 (636) 724-9191 Phone (636) 724-9323 FAX Project Name: <u>Q15 PCB GW Sampling-1403345</u> Site: <u>Solutia WG Krummrich Facility</u> P O # <u>42447936</u>	Project Manager: Amanda Derhake Tel/Fax: 636-724-9191	Site Contact: <u>Lois Binder</u> Lab Contact: Michele Kersey Date: <u>11/13/15</u> Carrier: <u>FedEx</u>	COC No: _____ _____ of _____ COCs Sampler: <u>F. White</u> For Lab Use Only: Walk-in Client: _____ Lab Sampling: _____ Job / SDG No.: _____
Analysis Turnaround Time <input checked="" type="checkbox"/> CALENDAR <input type="checkbox"/> WORKING TAT if different from Below <u>Standard</u> <input type="checkbox"/> 2 <input type="checkbox"/> 1 week <input type="checkbox"/> 2 days <input type="checkbox"/> 1 day		Filtered Sample (Y/N) _____ Perform MS / MSD (Y/N) _____ Total PCBs by 880 _____	

Sample Identification	Sample Date	Sample Time	Sample Type (C=Comp, G=Grab)	Matrix	# of Cont.	Filtered Sample (Y/N)	Perform MS / MSD (Y/N)	Total PCBs by 880
<u>PMA-MW-3M-1115</u>	<u>11/13/15</u>	<u>1020</u>	<u>G</u>	<u>W</u>	<u>2</u>	<u>N</u>	<u>N</u>	<u>2</u>
<u>PMA-MW-3S-1115</u>	<u>1</u>	<u>1050</u>	<u>1</u>	<u>1</u>	<u>2</u>	<u>N</u>	<u>N</u>	<u>2</u>
<u>PMA-MW-4D-1115</u>	<u>1</u>	<u>1135</u>	<u>1</u>	<u>1</u>	<u>2</u>	<u>N</u>	<u>N</u>	<u>2</u>
<u>PMA-MW-4S-1115</u>	<u>1</u>	<u>1205</u>	<u>1</u>	<u>1</u>	<u>2</u>	<u>N</u>	<u>N</u>	<u>2</u>

Preservation Used: Ice, HCl, H2SO4, HNO3, NaOH, Other _____

Possible Hazard Identification:
 Are any samples from a listed EPA Hazardous Waste? Please List any EPA Waste Codes for the sample in the Comments Section if the lab is to dispose of the sample.

Non-Hazard Flammab Skin Poison B Unknown Return to Client



_____ retained longer than 1 month)

archive for: _____ Months

680-119038

Special Instructions/QC Requirements & Comments:

Custody Seals Intact: No

Custody Seal No.: 436273 Cooler Temp. (°C): Obs'd: 1.4 Corr'd: 1.4 Therm ID No: _____

Relinquished by: <u>Ernie White</u>	Company: <u>Golder</u>	Date/Time: <u>11/13/15 1345</u>	Received by: _____	Company: _____	Date/Time: _____
Relinquished by: _____	Company: _____	Date/Time: _____	Received by: _____	Company: _____	Date/Time: _____
Relinquished by: _____	Company: _____	Date/Time: _____	Received in Laboratory by: <u>Mr. White</u>	Company: <u>TL</u>	Date/Time: <u>11/14/15 10:20</u>



**APPENDIX C
QUALITY ASSURANCE REPORT**



QUALITY ASSURANCE REPORT

PCB GROUNDWATER QUALITY
ASSESSMENT PROGRAM
SOLUTIA INC., W.G. KRUMMRICH FACILITY
SAUGET, ILLINOIS

Prepared For: Solutia Inc.
575 Maryville Centre Drive
St. Louis, MO 63141 USA

Submitted By: Golder Associates Inc.
820 S. Main Street, Suite 100
St. Charles, MO 63301 USA

January 2016

140-3345

A world of
capabilities
delivered locally





Table of Contents

1.0	INTRODUCTION.....	1
2.0	POLYCHLORINATED BIPHENYLS	2
2.1	Receipt Condition and Sample Holding Times	2
2.2	Blanks.....	2
2.3	Surrogate Spike Recoveries	3
2.4	Laboratory Control Sample Recoveries	3
2.5	Matrix Spike/Matrix Spike Duplicate (MS/MSD) Samples	3
2.6	Analytical Duplicates	3
2.7	Results Reported From Dilutions	3
3.0	SUMMARY	3
4.0	REFERENCES.....	5

US EPA ARCHIVE DOCUMENT



1.0 INTRODUCTION

Golder Associates Inc. (Golder) completed a review of analytical data for the groundwater samples collected on November 12 and November 13, 2015 at the Solutia Inc. (Solutia) W.G. Krummrich (WGK) facility (Site) in Sauget, Illinois. Golder collected a total of fourteen (14) samples from groundwater monitoring wells as part of the 4th Quarter 2015 (4Q15) PCB Groundwater Quality Assessment Program (PCB). Ten (10) groundwater samples, one (1) equipment blank (EB), one (1) analytical duplicate (AD) and one (1) matrix spike/matrix spike duplicate (MS/MSD) pair were prepared. Groundwater monitoring locations were located at the WGK facility. The samples were submitted to the TestAmerica Laboratories, Inc. (TestAmerica) facility located in Savannah, Georgia for analysis using United States Environmental Protection Agency (USEPA) Method 680. Samples submitted to TestAmerica were analyzed for polychlorinated biphenyls (PCBs). The analytical results were placed into two (2) sample delivery groups (SDGs) as described in the table below:

Sample Delivery Group (SDG)	Sample Identification
KPM067	PMA-MW-1M-1115
	PMA-MW-1S-1115
	PMA-MW-2M-1115
	PMA-MW-2M-1115-AD
	PMA-MW-2S-1115
	PMA-MW-2S-1115-EB
	PMA-MW-5M-1115
	PMA-MW-6D-1115
KPM068	PMA-MW-3M-1115
	PMA-MW-3S-1115
	PMA-MW-4D-1115
	PMA-MW-4S-1115

The samples were collected and analyzed in general accordance with the Revised PCB Groundwater Quality Assessment Program Work Plan (Work Plan) (Solutia 2009). Groundwater samples were analyzed for polychlorinated biphenyls (PCBs) using USEPA Method 680. In addition, the EB, AD and MS/MSD pair were submitted and analyzed for PCBs.

Golder completed validation of the analytical data following the general guidelines in Section 3.4 Data Review and Validation of the Work Plan. The Work Plan specifies that the most recent version of the national data validation guidelines be used for data review. The following guidelines were generally used:

- USEPA Contract Laboratory Program National Functional Guidelines for Superfund Organic Methods Data Review, EPA-540-R-08-01, June 2008



These documents are hereafter referred to as the "functional guidelines". If there was a conflict between the functional guidelines and the quality control criteria specified in the analytical method, the method-specific criteria were used. The SDGs were prepared as a Level IV data report package containing quality control information and raw data. Golder completed Level III review of 100% of the analytical data and Level IV review of 10% of the analytical data.

Data that has been qualified by the data validator has been added to the laboratory report. The qualifiers indicate data that did not meet acceptance criteria and corrective actions were not successful or not performed. Laboratory data qualifiers are defined below:

- U – The analyte was analyzed for but not was not detected

Golder data qualifiers are defined below:

- D – The analyte was analyzed at a dilution

Section 2 summarizes the specific instances where quality control criteria in the functional guidelines were not met. As specified in the functional guidelines, if the non-adherence to quality control criteria is slight, professional judgment was used in qualification of the data. However, if the non-adherence is significant, qualification and rejection of the data may be necessary. A summary of qualified data is provided in Section 3.0.

Following data validation, the qualified data were summarized in tables, which are included in the main body of the report.

2.0 POLYCHLORINATED BIPHENYLS

Samples were collected from ten (10) groundwater monitoring locations and analyzed for PCBs. One (1) AD sample was collected from sampling location, PMA-MW-2M. One (1) EB, associated with PMA-MW-2S was also prepared and shipped for laboratory analysis. The samples were submitted to TestAmerica, placed into two (2) data packages or SDGs (KPM067 and KPM068), and were prepared and analyzed using USEPA Method 680. Samples were validated in general accordance with the functional guidelines. Results of the validation are summarized below.

2.1 Receipt Condition and Sample Holding Times

The SDG Case Narrative, chain-of-custody, login sample receipt checklist, and analysis dates were reviewed to verify analytical method holding times and proper preservation upon sampling. Samples were received by TestAmerica in good condition.

2.2 Blanks

Laboratory and field blanks, including method blanks and equipment blanks are prepared and analyzed to determine if contamination occurred as a result of laboratory or field activities.



Laboratory method blanks were performed for each laboratory system as outlined for each analytical method to evaluate whether cross contamination occurred during laboratory analysis activities. Results for the method blanks were non-detect.

One (1) EB, associated with sample PMA-MW-2S, was collected during the 4Q15 event to assess the effectiveness of the decontamination procedure. There were no detections in the EB.

2.3 Surrogate Spike Recoveries

Samples to be analyzed for PCBs were spiked with surrogate compound decachlorobiphenyl-13C12 prior to analysis, to evaluate overall laboratory performance. No deficiencies were noted, therefore no qualification was required.

2.4 Laboratory Control Sample Recoveries

A laboratory control sample (LCS) is analyzed on each laboratory system to evaluate the analytical method accuracy and laboratory performance. LCS recoveries were within acceptance criteria.

2.5 Matrix Spike/Matrix Spike Duplicate (MS/MSD) Samples

MS/MSD samples are analyzed to determine long term precision and accuracy of the analytical method on various matrices. One (1) MS/MSD pair is sampled for every twenty (20) field samples. One (1) MS/MSD pair was collected during the 4Q15 event associated with sample PMA-MW-1S. MS/MSD accuracy and precision data met criteria; therefore qualification was not required.

2.6 Analytical Duplicates

One (1) AD is collected for every ten (10) field samples to determine the overall precision of field and laboratory methods. One (1) AD was collected during the 4Q15 event associated with sample PMA-MW-2M. The relative percent difference (RPD) between the sample, PMA-MW-2M, and the AD, PMA-MW-2M-AD, did not exceed 25%; therefore, data qualification was not required.

2.7 Results Reported From Dilutions

PCB samples, PMA-MW-2M, PMA-MW-2M-AD, and PMA-MW-4S required dilutions due to high levels of target analytes or initial appearance. Reporting limits were adjusted to reflect the dilution. Result qualifications are shown in Section 3.0.

3.0 SUMMARY

Golder validated the data collected during the 4Q15 sampling event from the Solutia Inc. WGK facility in general accordance with the Work Plan and USEPA functional guidelines. Although some data required qualifications due to quality control criteria that were not achieved, the data were deemed usable. Where a positive result was qualified as estimated, the analyte should be considered present. Similarly, a result



that was qualified as an estimated reporting limit should be considered not present for the purposes of this program, although the limit itself may not be precise. The completeness for the entire data set was 100%.

Qualification Summary Table

Quality Control Issue	Compound(s)	Qualifier	Samples Affected
Compounds analyzed at a dilution	Heptachlorobiphenyl, Hexachlorobiphenyl, Octachlorobiphenyl, Monochlorobiphenyl, Dichlorobiphenyl, Pentachlorobiphenyl, Tetrachlorobiphenyl, and Trichlorobiphenyl	D	PMA-MW-2M, PMA-MW-2M-AD and PMA-MW-4S

US EPA ARCHIVE DOCUMENT



4.0 REFERENCES

Solutia Inc, 2009. Revised PCB Groundwater Quality Assessment Program Work Plan, W.G. Krummrich Facility, Sauget, IL, Prepared by URS Corporation, May 2009.

USEPA, 2008. Contract Laboratory Program national Functional Guidelines for Superfund Organic Methods Data Review.

**APPENDIX D
GROUNDWATER ANALYTICAL RESULTS
(INCLUDING DATA VALIDATION REPORTS)**



Level IV Data Validation Summary
Solutia Inc., W.G. Krummrich, Sauget, Illinois
4Q15 PCB Groundwater Quality Assessment

Company Name: Golder Associates
Project Name: WGK-4Q15 PCB
Reviewer: A. Derhake
Laboratory: TestAmerica
SDG#: KPM067
Matrix: Water

Project Manager: A. Derhake
Project Number: 140-3345
Sample Date: November 2015

Analytical Method: PCB (680)

Sample Names: PMA-MW-6D-1115, PMA-MW-5M-1115, PMA-MW-1M-1115, PMA-MW-1S-1115, PMA-MW-2M-1115, PMA-MW-2M-1115-AD, PMA-MW-2S-1115, and PMA-MW-2S-1115-EB

Table with 4 columns: Field Information, YES, NO, NA. Rows include sampling dates noted and laboratory narrative deficiencies.

Comments:

PCBs: Samples PMA-MW-2M-1115 and PMA-MW-2M-1115-AD required a dilution prior to analysis, reporting limits were adjusted accordingly.

Table with 4 columns: Chain-of-Custody (COC), YES, NO, NA. Rows include COC signed by personnel and samples received in good condition.

Comments: Samples were received at 0.4°C, 0.8°C and 4.0°C, some outside the 4°C +/- 2°C criteria.

Table with 4 columns: General, YES, NO, NA. Rows include hold times met, preservatives used, correct method used, and sample dilutions noted.

Comments: Detections in diluted analysis were qualified.

Table with 4 columns: Calibrations, YES, NO, NA. Rows include initial and continuing calibrations analyzed.

Comments: None

Table with 4 columns: Blanks, YES, NO, NA. Rows include blanks performed at required frequency and analytes detected in blanks.

Comments: Equipment blank PMA-MW-2S-1115-EB was submitted with SDG KPM067.

US EPA ARCHIVE DOCUMENT





Matrix Spike/Matrix Spike Duplicate (MS/MSD)

YES NO NA

- a) Was MS/MSD accuracy criteria met?
- b) Was MS/MSD precision criteria met?

Comments: None

Laboratory Control Sample (LCS)

YES NO NA

- a) LCS analyzed at the appropriate frequency and met appropriate standards?

Comments: None

Surrogate (System Monitoring) Compounds

YES NO NA

- a) Surrogate compounds analyzed at the appropriate frequency and met appropriate standards?

Comments: None

Duplicates

YES NO NA

- a) Were field duplicates collected?
- b) Was field duplicate precision criteria met?

Comments: Duplicate sample PMA-MW-2M-1115-AD was submitted with SDG KPM067.

Additional Comments: None

Qualifications:

Quality Control Issue	Compound(s)	Qualifier	Samples Affected
Compounds analyzed at a dilution	Monochlorobiphenyl	D	PMA-MW-2M and PMA-MW-2M-AD

US EPA ARCHIVE DOCUMENT

SDG KPM067

Sample Results from:

**PMA-MW-1S
PMA-MW-1M
PMA-MW-2S
PMA-MW-2M
PMA-MW-5M
PMA-MW-6D**

TestAmerica

THE LEADER IN ENVIRONMENTAL TESTING

ANALYTICAL REPORT

TestAmerica Laboratories, Inc.
TestAmerica Savannah
5102 LaRoche Avenue
Savannah, GA 31404
Tel: (912)354-7858

TestAmerica Job ID: 680-118989-1
TestAmerica Sample Delivery Group: KPM067
Client Project/Site: 4Q15 PCB GW Sampling - 1403345

For:
Solutia Inc.
575 Maryville Centre Dr.
Saint Louis, Missouri 63141

Attn: Mr. Jerry Rinaldi



Authorized for release by:
12/4/2015 12:09:23 PM

Michele Kersey, Project Manager I
(912)354-7858
michele.kersey@testamericainc.com

LINKS

Review your project
results through
Total Access

Have a Question?
**Ask
The
Expert**

Visit us at:
www.testamericainc.com

The test results in this report meet all 2003 NELAC and 2009 TNI requirements for accredited parameters, exceptions are noted in this report. This report may not be reproduced except in full, and with written approval from the laboratory. For questions please contact the Project Manager at the e-mail address or telephone number listed on this page.

This report has been electronically signed and authorized by the signatory. Electronic signature is intended to be the legally binding equivalent of a traditionally handwritten signature.

Results relate only to the items tested and the sample(s) as received by the laboratory.

AND
12/30/15

US EPA ARCHIVE DOCUMENT

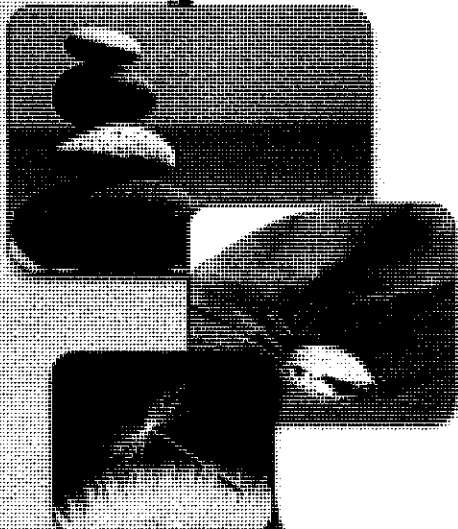




Table of Contents

Cover Page	1
Table of Contents	2
Case Narrative	3
Sample Summary	4
Method Summary	5
Definitions	6
Client Sample Results	7
QC Sample Results	15
QC Association	17
Chronicle	18
Chain of Custody	20
Receipt Checklists	21
Certification Summary	22

US EPA ARCHIVE DOCUMENT

*AWD
12/30/15*

Case Narrative

Client: Solutia Inc.
Project/Site: 4Q15 PCB GW Sampling - 1403345

TestAmerica Job ID: 680-118989-1
SDG: KPM067

Job ID: 680-118989-1

Laboratory: TestAmerica Savannah

Narrative

CASE NARRATIVE

Client: Solutia Inc.

Project: 4Q15 PCB GW Sampling - 1403345

Report Number: 680-118989-1

With the exceptions noted as flags or footnotes, standard analytical protocols were followed in the analysis of the samples and no problems were encountered or anomalies observed. In addition all laboratory quality control samples were within established control limits, with any exceptions noted below. Each sample was analyzed to achieve the lowest possible reporting limit within the constraints of the method. In the event of interference or analytes present at high concentrations, samples may be diluted. For diluted samples, the reporting limits are adjusted relative to the dilution required.

RECEIPT

The samples were received on 11/13/2015 9:34 AM; the samples arrived in good condition, properly preserved and, where required, on ice. The temperatures of the 3 coolers at receipt time were 0.4° C, 0.8° C and 4.0° C.

POLYCHLORINATED BIPHENYLS (PCBS)

Samples PMA-MW-6D-1115 (680-118989-1), PMA-MW-5M-1115 (680-118989-2), PMA-MW-1M-1115 (680-118989-3), PMA-MW-1S-1115 (680-118989-4), PMA-MW-2M-1115 (680-118989-5), PMA-MW-2M-1115-AD (680-118989-6), PMA-MW-2S-1115 (680-118989-7) and PMA-MW-2S-1115-EB (680-118989-8) were analyzed for polychlorinated biphenyls (PCBs) in accordance with EPA Method 680. The samples were prepared on 11/19/2015 and analyzed on 12/02/2015.

Samples PMA-MW-2M-1115 (680-118989-5)[5X] and PMA-MW-2M-1115-AD (680-118989-6)[5X] required dilution prior to analysis. The reporting limits have been adjusted accordingly.

No analytical or quality issues were noted, other than those described above or in the Definitions/Glossary page.

US EPA ARCHIVE DOCUMENT

Sample Summary

Client: Solutia Inc.
Project/Site: 4Q15 PCB GW Sampling - 1403345

TestAmerica Job ID: 680-118989-1
SDG: KPM067

Lab Sample ID	Client Sample ID	Matrix	Collected	Received
680-118989-1	PMA-MW-6D-1115	Water	11/12/15 13:22	11/13/15 09:34
680-118989-2	PMA-MW-5M-1115	Water	11/12/15 14:08	11/13/15 09:34
680-118989-3	PMA-MW-1M-1115	Water	11/12/15 14:55	11/13/15 09:34
680-118989-4	PMA-MW-1S-1115	Water	11/12/15 15:22	11/13/15 09:34
680-118989-5	PMA-MW-2M-1115	Water	11/12/15 16:04	11/13/15 09:34
680-118989-6	PMA-MW-2M-1115-AD	Water	11/12/15 16:04	11/13/15 09:34
680-118989-7	PMA-MW-2S-1115	Water	11/12/15 16:24	11/13/15 09:34
680-118989-8	PMA-MW-2S-1115-EB	Water	11/12/15 17:10	11/13/15 09:34

US EPA ARCHIVE DOCUMENT

4

AWD 12/2015
TestAmerica Savannah

Method Summary

Client: Solutia Inc.
Project/Site: 4Q15 PCB GW Sampling - 1403345

TestAmerica Job ID: 680-118989-1
SDG: KPM067

Method	Method Description	Protocol	Laboratory
680	Polychlorinated Biphenyls (PCBs) (GC/MS)	EPA	TAL SAV

Protocol References:

EPA = US Environmental Protection Agency

Laboratory References:

TAL SAV = TestAmerica Savannah, 5102 LaRoche Avenue, Savannah, GA 31404, TEL (912)354-7858

US EPA ARCHIVE DOCUMENT

5

AWD 12/30/15
TestAmerica Savannah

Definitions/Glossary

Client: Solutia Inc.
Project/Site: 4Q15 PCB GW Sampling - 1403345

TestAmerica Job ID: 680-118989-1
SDG: KPM067

Qualifiers

GC/MS Semi VOA

Qualifier	Qualifier Description
U	Indicates the analyte was analyzed for but not detected.

Glossary

Abbreviation	These commonly used abbreviations may or may not be present in this report.
□	Listed under the "D" column to designate that the result is reported on a dry weight basis
%R	Percent Recovery
CFL	Contains Free Liquid
CNF	Contains no Free Liquid
DER	Duplicate error ratio (normalized absolute difference)
Dil Fac	Dilution Factor
DL, RA, RE, IN	Indicates a Dilution, Re-analysis, Re-extraction, or additional Initial metals/anion analysis of the sample
DLC	Decision level concentration
MDA	Minimum detectable activity
EDL	Estimated Detection Limit
MDC	Minimum detectable concentration
MDL	Method Detection Limit
ML	Minimum Level (Dioxin)
NC	Not Calculated
ND	Not detected at the reporting limit (or MDL or EDL if shown)
PQL	Practical Quantitation Limit
QC	Quality Control
RER	Relative error ratio
RL	Reporting Limit or Requested Limit (Radiochemistry)
RPD	Relative Percent Difference, a measure of the relative difference between two points
TEF	Toxicity Equivalent Factor (Dioxin)
TEQ	Toxicity Equivalent Quotient (Dioxin)

US EPA ARCHIVE DOCUMENT

6

MWD 12-13-15
TestAmerica Savannah

Client Sample Results

Client: Solutia Inc.
 Project/Site: 4Q15 PCB GW Sampling - 1403345

TestAmerica Job ID: 680-118989-1
 SDG: KPM067

Client Sample ID: PMA-MW-6D-1115

Lab Sample ID: 680-118989-1

Date Collected: 11/12/15 13:22

Matrix: Water

Date Received: 11/13/15 09:34

Method: 680 - Polychlorinated Biphenyls (PCBs) (GC/MS)

Analyte	Result	Qualifier	RL	MDL	Unit	D	Prepared	Analyzed	Dil Fac
Heptachlorobiphenyl	0.30	U	0.30		ug/L		11/19/15 15:51	12/02/15 15:32	1
Hexachlorobiphenyl	0.20	U	0.20		ug/L		11/19/15 15:51	12/02/15 15:32	1
Nonachlorobiphenyl	0.51	U	0.51		ug/L		11/19/15 15:51	12/02/15 15:32	1
Octachlorobiphenyl	0.30	U	0.30		ug/L		11/19/15 15:51	12/02/15 15:32	1
Monochlorobiphenyl	0.19		0.10		ug/L		11/19/15 15:51	12/02/15 15:32	1
DCB Decachlorobiphenyl	0.51	U	0.51		ug/L		11/19/15 15:51	12/02/15 15:32	1
Dichlorobiphenyl	0.10	U	0.10		ug/L		11/19/15 15:51	12/02/15 15:32	1
Pentachlorobiphenyl	0.20	U	0.20		ug/L		11/19/15 15:51	12/02/15 15:32	1
Tetrachlorobiphenyl	0.20	U	0.20		ug/L		11/19/15 15:51	12/02/15 15:32	1
Trichlorobiphenyl	0.10	U	0.10		ug/L		11/19/15 15:51	12/02/15 15:32	1
Surrogate	%Recovery	Qualifier	Limits				Prepared	Analyzed	Dil Fac
Decachlorobiphenyl-13C12	69		25-113				11/19/15 15:51	12/02/15 15:32	1

US EPA ARCHIVE DOCUMENT

7

AUD 12/30/15
 TestAmerica Savannah

Client Sample Results

Client: Solutia Inc.
 Project/Site: 4Q15 PCB GW Sampling - 1403345

TestAmerica Job ID: 680-118989-1
 SDG: KPM067

Client Sample ID: PMA-MW-5M-1115

Lab Sample ID: 680-118989-2

Date Collected: 11/12/15 14:08

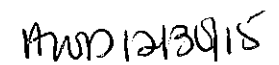
Matrix: Water

Date Received: 11/13/15 09:34

Method: 680 - Polychlorinated Biphenyls (PCBs) (GC/MS)										
Analyte	Result	Qualifier	RL	MDL	Unit	D	Prepared	Analyzed	Dil Fac	
Heptachlorobiphenyl	0.30	U	0.30		ug/L		11/19/15 15:51	12/02/15 16:01	1	
Hexachlorobiphenyl	0.20	U	0.20		ug/L		11/19/15 15:51	12/02/15 16:01	1	
Nonachlorobiphenyl	0.49	U	0.49		ug/L		11/19/15 15:51	12/02/15 16:01	1	
Octachlorobiphenyl	0.30	U	0.30		ug/L		11/19/15 15:51	12/02/15 16:01	1	
Monochlorobiphenyl	0.099	U	0.099		ug/L		11/19/15 15:51	12/02/15 16:01	1	
DCB Decachlorobiphenyl	0.49	U	0.49		ug/L		11/19/15 15:51	12/02/15 16:01	1	
Dichlorobiphenyl	0.099	U	0.099		ug/L		11/19/15 15:51	12/02/15 16:01	1	
Pentachlorobiphenyl	0.20	U	0.20		ug/L		11/19/15 15:51	12/02/15 16:01	1	
Tetrachlorobiphenyl	0.20	U	0.20		ug/L		11/19/15 15:51	12/02/15 16:01	1	
Trichlorobiphenyl	0.099	U	0.099		ug/L		11/19/15 15:51	12/02/15 16:01	1	
Surrogate	%Recovery	Qualifier	Limits				Prepared	Analyzed	Dil Fac	
Decachlorobiphenyl-13C12	60		25 - 113				11/19/15 15:51	12/02/15 16:01	1	

US EPA ARCHIVE DOCUMENT

7


 TestAmerica Savannah

Client Sample Results

Client: Solutia Inc.
 Project/Site: 4Q15 PCB GW Sampling - 1403345

TestAmerica Job ID: 680-118989-1
 SDG: KPM067

Client Sample ID: PMA-MW-1M-1115

Lab Sample ID: 680-118989-3

Date Collected: 11/12/15 14:55

Matrix: Water

Date Received: 11/13/15 09:34

Method: 680 - Polychlorinated Biphenyls (PCBs) (GC/MS)

Analyte	Result	Qualifier	RL	MDL	Unit	D	Prepared	Analyzed	Dil Fac
Heptachlorobiphenyl	0.31	U	0.31		ug/L		11/19/15 15:51	12/02/15 16:29	1
Hexachlorobiphenyl	0.20	U	0.20		ug/L		11/19/15 15:51	12/02/15 16:29	1
Nonachlorobiphenyl	0.51	U	0.51		ug/L		11/19/15 15:51	12/02/15 16:29	1
Octachlorobiphenyl	0.31	U	0.31		ug/L		11/19/15 15:51	12/02/15 16:29	1
Monochlorobiphenyl	0.61		0.10		ug/L		11/19/15 15:51	12/02/15 16:29	1
DCB Decachlorobiphenyl	0.51	U	0.51		ug/L		11/19/15 15:51	12/02/15 16:29	1
Dichlorobiphenyl	0.10	U	0.10		ug/L		11/19/15 15:51	12/02/15 16:29	1
Pentachlorobiphenyl	0.20	U	0.20		ug/L		11/19/15 15:51	12/02/15 16:29	1
Tetrachlorobiphenyl	0.20	U	0.20		ug/L		11/19/15 15:51	12/02/15 16:29	1
Trichlorobiphenyl	0.10	U	0.10		ug/L		11/19/15 15:51	12/02/15 16:29	1
Surrogate	%Recovery	Qualifier	Limits				Prepared	Analyzed	Dil Fac
Decachlorobiphenyl-13C12	60		25 - 113				11/19/15 15:51	12/02/15 16:29	1

US EPA ARCHIVE DOCUMENT

7

AWD 12/30/15
 TestAmerica Savannah

Client Sample Results

Client: Solutia Inc.
 Project/Site: 4Q15 PCB GW Sampling - 1403345

TestAmerica Job ID: 680-118989-1
 SDG: KPM067

Client Sample ID: PMA-MW-1S-1115

Lab Sample ID: 680-118989-4

Date Collected: 11/12/15 15:22

Matrix: Water

Date Received: 11/13/15 09:34

Method: 680 - Polychlorinated Biphenyls (PCBs) (GC/MS)

Analyte	Result	Qualifier	RL	MDL	Unit	D	Prepared	Analyzed	Dil Fac
Heptachlorobiphenyl	0.30	U	0.30		ug/L		11/19/15 15:51	12/02/15 16:58	1
Hexachlorobiphenyl	0.20	U	0.20		ug/L		11/19/15 15:51	12/02/15 16:58	1
Nonachlorobiphenyl	0.50	U	0.50		ug/L		11/19/15 15:51	12/02/15 16:58	1
Octachlorobiphenyl	0.30	U	0.30		ug/L		11/19/15 15:51	12/02/15 16:58	1
Monochlorobiphenyl	0.099	U	0.099		ug/L		11/19/15 15:51	12/02/15 16:58	1
DCB Decachlorobiphenyl	0.50	U	0.50		ug/L		11/19/15 15:51	12/02/15 16:58	1
Dichlorobiphenyl	0.099	U	0.099		ug/L		11/19/15 15:51	12/02/15 16:58	1
Pentachlorobiphenyl	0.20	U	0.20		ug/L		11/19/15 15:51	12/02/15 16:58	1
Tetrachlorobiphenyl	0.20	U	0.20		ug/L		11/19/15 15:51	12/02/15 16:58	1
Trichlorobiphenyl	0.099	U	0.099		ug/L		11/19/15 15:51	12/02/15 16:58	1
Surrogate	%Recovery	Qualifier	Limits				Prepared	Analyzed	Dil Fac
Decachlorobiphenyl-13C12	64		25 - 113				11/19/15 15:51	12/02/15 16:58	1

US EPA ARCHIVE DOCUMENT

7

PWD 12/20/15
 TestAmerica Savannah

Client Sample Results

Client: Solutia Inc.
 Project/Site: 4Q15 PCB GW Sampling - 1403345

TestAmerica Job ID: 680-118989-1
 SDG: KPM067

Client Sample ID: PMA-MW-2M-1115

Lab Sample ID: 680-118989-5

Date Collected: 11/12/15 16:04

Matrix: Water

Date Received: 11/13/15 09:34

Method: 680 - Polychlorinated Biphenyls (PCBs) (GC/MS)

Analyte	Result	Qualifier	RL	MDL	Unit	D	Prepared	Analyzed	Dil Fac
Heptachlorobiphenyl	1.5	U	1.5		ug/L		11/19/15 15:51	12/02/15 17:26	5
Hexachlorobiphenyl	0.98	U	0.98		ug/L		11/19/15 15:51	12/02/15 17:26	5
Nonachlorobiphenyl	2.4	U	2.4		ug/L		11/19/15 15:51	12/02/15 17:26	5
Octachlorobiphenyl	1.5	U	1.5		ug/L		11/19/15 15:51	12/02/15 17:26	5
Monochlorobiphenyl	9.5	D	0.49		ug/L		11/19/15 15:51	12/02/15 17:26	5
DCB Decachlorobiphenyl	2.4	U	2.4		ug/L		11/19/15 15:51	12/02/15 17:26	5
Dichlorobiphenyl	0.49	U	0.49		ug/L		11/19/15 15:51	12/02/15 17:26	5
Pentachlorobiphenyl	0.98	U	0.98		ug/L		11/19/15 15:51	12/02/15 17:26	5
Tetrachlorobiphenyl	0.98	U	0.98		ug/L		11/19/15 15:51	12/02/15 17:26	5
Trichlorobiphenyl	0.49	U	0.49		ug/L		11/19/15 15:51	12/02/15 17:26	5
Surrogate	%Recovery	Qualifier	Limits				Prepared	Analyzed	Dil Fac
Decachlorobiphenyl-13C12	112		25 - 113				11/19/15 15:51	12/02/15 17:26	5

US EPA ARCHIVE DOCUMENT

7

MWD 12/30/15
 TestAmerica Savannah

Client Sample Results

Client: Solutia Inc.
 Project/Site: 4Q15 PCB GW Sampling - 1403345

TestAmerica Job ID: 680-118989-1
 SDG: KPM067

Client Sample ID: PMA-MW-2M-1115-AD

Lab Sample ID: 680-118989-6

Date Collected: 11/12/15 16:04

Matrix: Water

Date Received: 11/13/15 09:34

Method: 680 - Polychlorinated Biphenyls (PCBs) (GC/MS)

Analyte	Result	Qualifier	RL	MDL	Unit	D	Prepared	Analyzed	Dil Fac
Heptachlorobiphenyl	1.5	U	1.5		ug/L		11/19/15 15:51	12/02/15 17:54	5
Hexachlorobiphenyl	1.0	U	1.0		ug/L		11/19/15 15:51	12/02/15 17:54	5
Nonachlorobiphenyl	2.6	U	2.6		ug/L		11/19/15 15:51	12/02/15 17:54	5
Octachlorobiphenyl	1.5	U	1.5		ug/L		11/19/15 15:51	12/02/15 17:54	5
Monochlorobiphenyl	10	U	0.52		ug/L		11/19/15 15:51	12/02/15 17:54	5
DCB Decachlorobiphenyl	2.6	U	2.6		ug/L		11/19/15 15:51	12/02/15 17:54	5
Dichlorobiphenyl	0.52	U	0.52		ug/L		11/19/15 15:51	12/02/15 17:54	5
Pentachlorobiphenyl	1.0	U	1.0		ug/L		11/19/15 15:51	12/02/15 17:54	5
Tetrachlorobiphenyl	1.0	U	1.0		ug/L		11/19/15 15:51	12/02/15 17:54	5
Trichlorobiphenyl	0.52	U	0.52		ug/L		11/19/15 15:51	12/02/15 17:54	5
Surrogate	%Recovery	Qualifier	Limits				Prepared	Analyzed	Dil Fac
Decachlorobiphenyl-13C12	109		25 - 113				11/19/15 15:51	12/02/15 17:54	5

US EPA ARCHIVE DOCUMENT

7

MWD 12/30/15
 TestAmerica Savannah

Client Sample Results

Client: Solutia Inc.
 Project/Site: 4Q15 PCB GW Sampling - 1403345

TestAmerica Job ID: 680-118989-1
 SDG: KPM067

Client Sample ID: PMA-MW-2S-1115

Lab Sample ID: 680-118989-7

Date Collected: 11/12/15 16:24

Matrix: Water

Date Received: 11/13/15 09:34

Method: 680 - Polychlorinated Biphenyls (PCBs) (GC/MS)

Analyte	Result	Qualifier	RL	MDL	Unit	D	Prepared	Analyzed	Dil Fac
Heptachlorobiphenyl	0.30	U	0.30		ug/L		11/19/15 15:51	12/02/15 18:23	1
Hexachlorobiphenyl	0.20	U	0.20		ug/L		11/19/15 15:51	12/02/15 18:23	1
Nonachlorobiphenyl	0.50	U	0.50		ug/L		11/19/15 15:51	12/02/15 18:23	1
Octachlorobiphenyl	0.30	U	0.30		ug/L		11/19/15 15:51	12/02/15 18:23	1
Monochlorobiphenyl	0.10	U	0.10		ug/L		11/19/15 15:51	12/02/15 18:23	1
DCB Decachlorobiphenyl	0.50	U	0.50		ug/L		11/19/15 15:51	12/02/15 18:23	1
Dichlorobiphenyl	0.10	U	0.10		ug/L		11/19/15 15:51	12/02/15 18:23	1
Pentachlorobiphenyl	0.20	U	0.20		ug/L		11/19/15 15:51	12/02/15 18:23	1
Tetrachlorobiphenyl	0.20	U	0.20		ug/L		11/19/15 15:51	12/02/15 18:23	1
Trichlorobiphenyl	0.10	U	0.10		ug/L		11/19/15 15:51	12/02/15 18:23	1
Surrogate	%Recovery	Qualifier	Limits				Prepared	Analyzed	Dil Fac
Decachlorobiphenyl-13C12	82		25 - 113				11/19/15 15:51	12/02/15 18:23	1

US EPA ARCHIVE DOCUMENT

7

AWD 12/30/15
 TestAmerica Savannah

Client Sample Results

Client: Solutia Inc.
 Project/Site: 4Q15 PCB GW Sampling - 1403345

TestAmerica Job ID: 680-118989-1
 SDG: KPM067

Client Sample ID: PMA-MW-2S-1115-EB

Lab Sample ID: 680-118989-8

Date Collected: 11/12/15 17:10

Matrix: Water

Date Received: 11/13/15 09:34

Method: 680 - Polychlorinated Biphenyls (PCBs) (GC/MS)

Analyte	Result	Qualifier	RL	MDL	Unit	D	Prepared	Analyzed	Dil Fac
Heptachlorobiphenyl	0.31	U	0.31		ug/L		11/19/15 15:51	12/02/15 18:51	1
Hexachlorobiphenyl	0.20	U	0.20		ug/L		11/19/15 15:51	12/02/15 18:51	1
Nonachlorobiphenyl	0.51	U	0.51		ug/L		11/19/15 15:51	12/02/15 18:51	1
Octachlorobiphenyl	0.31	U	0.31		ug/L		11/19/15 15:51	12/02/15 18:51	1
Monochlorobiphenyl	0.10	U	0.10		ug/L		11/19/15 15:51	12/02/15 18:51	1
DCB Decachlorobiphenyl	0.51	U	0.51		ug/L		11/19/15 15:51	12/02/15 18:51	1
Dichlorobiphenyl	0.10	U	0.10		ug/L		11/19/15 15:51	12/02/15 18:51	1
Pentachlorobiphenyl	0.20	U	0.20		ug/L		11/19/15 15:51	12/02/15 18:51	1
Tetrachlorobiphenyl	0.20	U	0.20		ug/L		11/19/15 15:51	12/02/15 18:51	1
Trichlorobiphenyl	0.10	U	0.10		ug/L		11/19/15 15:51	12/02/15 18:51	1

Surrogate	%Recovery	Qualifier	Limits	Prepared	Analyzed	Dil Fac
Decachlorobiphenyl-13C12	73		25 - 113	11/19/15 15:51	12/02/15 18:51	1

US EPA ARCHIVE DOCUMENT

7

AWD 12/30/15
 TestAmerica Savannah

QC Sample Results

Client: Solutia Inc.
Project/Site: 4Q15 PCB GW Sampling - 1403345

TestAmerica Job ID: 680-118989-1
SDG: KPM067

Method: 680 - Polychlorinated Biphenyls (PCBs) (GC/MS)

Lab Sample ID: MB 680-411127/13-A

Matrix: Water

Analysis Batch: 412678

Client Sample ID: Method Blank

Prep Type: Total/NA

Prep Batch: 411127

Analyte	MB MB		RL	MDL	Unit	D	Prepared	Analyzed	Dil Fac
	Result	Qualifier							
Heptachlorobiphenyl	0.30	U	0.30		ug/L		11/19/15 15:51	12/02/15 13:38	1
Hexachlorobiphenyl	0.20	U	0.20		ug/L		11/19/15 15:51	12/02/15 13:38	1
Nonachlorobiphenyl	0.50	U	0.50		ug/L		11/19/15 15:51	12/02/15 13:38	1
Octachlorobiphenyl	0.30	U	0.30		ug/L		11/19/15 15:51	12/02/15 13:38	1
Monochlorobiphenyl	0.10	U	0.10		ug/L		11/19/15 15:51	12/02/15 13:38	1
DCB Decachlorobiphenyl	0.50	U	0.50		ug/L		11/19/15 15:51	12/02/15 13:38	1
Dichlorobiphenyl	0.10	U	0.10		ug/L		11/19/15 15:51	12/02/15 13:38	1
Pentachlorobiphenyl	0.20	U	0.20		ug/L		11/19/15 15:51	12/02/15 13:38	1
Tetrachlorobiphenyl	0.20	U	0.20		ug/L		11/19/15 15:51	12/02/15 13:38	1
Trichlorobiphenyl	0.10	U	0.10		ug/L		11/19/15 15:51	12/02/15 13:38	1

Surrogate	MB MB		Limits	Prepared	Analyzed	Dil Fac
	%Recovery	Qualifier				
Decachlorobiphenyl-13C12	76		25 - 113	11/19/15 15:51	12/02/15 13:38	1

Lab Sample ID: LCS 680-411127/14-A

Matrix: Water

Analysis Batch: 412678

Client Sample ID: Lab Control Sample

Prep Type: Total/NA

Prep Batch: 411127

Analyte	Spike Added	LCS LCS		Unit	D	%Rec	Limits
		Result	Qualifier				
Heptachlorobiphenyl	6.00	4.76		ug/L		79	62 - 130
Hexachlorobiphenyl	4.00	3.15		ug/L		79	62 - 130
Nonachlorobiphenyl	10.0	10.9		ug/L		109	70 - 195
Octachlorobiphenyl	6.00	4.72		ug/L		79	64 - 130
Monochlorobiphenyl	2.00	1.19		ug/L		60	42 - 130
DCB Decachlorobiphenyl	10.0	7.43		ug/L		74	59 - 130
Dichlorobiphenyl	2.00	1.34		ug/L		67	49 - 130
Pentachlorobiphenyl	4.00	3.09		ug/L		77	63 - 130
Tetrachlorobiphenyl	4.00	2.97		ug/L		74	54 - 130
Trichlorobiphenyl	2.00	1.47		ug/L		74	51 - 130

Surrogate	LCS LCS		Limits
	%Recovery	Qualifier	
Decachlorobiphenyl-13C12	77		25 - 113

Lab Sample ID: 680-118989-4 MS

Matrix: Water

Analysis Batch: 412678

Client Sample ID: PMA-MW-1S-1115

Prep Type: Total/NA

Prep Batch: 411127

Analyte	Sample Result	Sample Qualifier	Spike Added	MS MS		Unit	D	%Rec	Limits
				Result	Qualifier				
Heptachlorobiphenyl	0.30	U	5.96	5.12		ug/L		86	62 - 130
Hexachlorobiphenyl	0.20	U	3.98	3.38		ug/L		85	62 - 130
Nonachlorobiphenyl	0.50	U	9.94	11.5		ug/L		115	70 - 195
Octachlorobiphenyl	0.30	U	5.96	4.92		ug/L		82	64 - 130
Monochlorobiphenyl	0.099	U	1.99	1.34		ug/L		68	42 - 130
DCB Decachlorobiphenyl	0.50	U	9.94	8.04		ug/L		81	59 - 130
Dichlorobiphenyl	0.099	U	1.99	1.47		ug/L		74	49 - 130
Pentachlorobiphenyl	0.20	U	3.98	4.84		ug/L		122	63 - 130
Tetrachlorobiphenyl	0.20	U	3.98	2.99		ug/L		75	54 - 130

PMD 12/30/15
TestAmerica Savannah

US EPA ARCHIVE DOCUMENT

8

QC Sample Results

Client: Solutia Inc.
Project/Site: 4Q15 PCB GW Sampling - 1403345

TestAmerica Job ID: 680-118989-1
SDG: KPM067

Method: 680 - Polychlorinated Biphenyls (PCBs) (GC/MS) (Continued)

Lab Sample ID: 680-118989-4 MS

Client Sample ID: PMA-MW-1S-1115

Matrix: Water

Prep Type: Total/NA

Analysis Batch: 412678

Prep Batch: 411127

Analyte	Sample Result	Sample Qualifier	Spike Added	MS Result	MS Qualifier	Unit	D	%Rec	Limits
Trichlorobiphenyl	0.099	U	1.99	1.44		ug/L		73	51 - 130
Surrogate									
	<i>MS %Recovery</i>	<i>MS Qualifier</i>	<i>Limits</i>						
Decachlorobiphenyl-13C12	82		25 - 113						

Lab Sample ID: 680-118989-4 MSD

Client Sample ID: PMA-MW-1S-1115

Matrix: Water

Prep Type: Total/NA

Analysis Batch: 412678

Prep Batch: 411127

Analyte	Sample Result	Sample Qualifier	Spike Added	MSD Result	MSD Qualifier	Unit	D	%Rec	Limits	RPD	Limit
Heptachlorobiphenyl	0.30	U	6.15	5.29		ug/L		86	62 - 130	3	40
Hexachlorobiphenyl	0.20	U	4.10	3.55		ug/L		87	62 - 130	5	40
Nonachlorobiphenyl	0.50	U	10.3	11.9		ug/L		116	70 - 195	4	40
Octachlorobiphenyl	0.30	U	6.15	5.02		ug/L		82	64 - 130	2	40
Monochlorobiphenyl	0.099	U	2.05	1.12		ug/L		55	42 - 130	18	40
DCB Decachlorobiphenyl	0.50	U	10.3	7.89		ug/L		77	59 - 130	2	40
Dichlorobiphenyl	0.099	U	2.05	1.39		ug/L		68	49 - 130	6	40
Pentachlorobiphenyl	0.20	U	4.10	5.01		ug/L		122	63 - 130	4	40
Tetrachlorobiphenyl	0.20	U	4.10	2.85		ug/L		70	54 - 130	5	40
Trichlorobiphenyl	0.099	U	2.05	1.36		ug/L		66	51 - 130	6	40
Surrogate											
	<i>MSD %Recovery</i>	<i>MSD Qualifier</i>	<i>Limits</i>								
Decachlorobiphenyl-13C12	77		25 - 113								

US EPA ARCHIVE DOCUMENT

8

ANSO 12/30/15
TestAmerica Savannah

QC Association Summary

Client: Solutia Inc.
 Project/Site: 4Q15 PCB GW Sampling - 1403345

TestAmerica Job ID: 680-118989-1
 SDG: KPM067

GC/MS Semi VOA

Prep Batch: 411127

Lab Sample ID	Client Sample ID	Prep Type	Matrix	Method	Prep Batch
680-118989-1	PMA-MW-6D-1115	Total/NA	Water	680	
680-118989-2	PMA-MW-5M-1115	Total/NA	Water	680	
680-118989-3	PMA-MW-1M-1115	Total/NA	Water	680	
680-118989-4	PMA-MW-1S-1115	Total/NA	Water	680	
680-118989-4 MS	PMA-MW-1S-1115	Total/NA	Water	680	
680-118989-4 MSD	PMA-MW-1S-1115	Total/NA	Water	680	
680-118989-5	PMA-MW-2M-1115	Total/NA	Water	680	
680-118989-6	PMA-MW-2M-1115-AD	Total/NA	Water	680	
680-118989-7	PMA-MW-2S-1115	Total/NA	Water	680	
680-118989-8	PMA-MW-2S-1115-EB	Total/NA	Water	680	
LCS 680-411127/14-A	Lab Control Sample	Total/NA	Water	680	
MB 680-411127/13-A	Method Blank	Total/NA	Water	680	

Analysis Batch: 412678

Lab Sample ID	Client Sample ID	Prep Type	Matrix	Method	Prep Batch
680-118989-1	PMA-MW-6D-1115	Total/NA	Water	680	411127
680-118989-2	PMA-MW-5M-1115	Total/NA	Water	680	411127
680-118989-3	PMA-MW-1M-1115	Total/NA	Water	680	411127
680-118989-4	PMA-MW-1S-1115	Total/NA	Water	680	411127
680-118989-4 MS	PMA-MW-1S-1115	Total/NA	Water	680	411127
680-118989-4 MSD	PMA-MW-1S-1115	Total/NA	Water	680	411127
680-118989-5	PMA-MW-2M-1115	Total/NA	Water	680	411127
680-118989-6	PMA-MW-2M-1115-AD	Total/NA	Water	680	411127
680-118989-7	PMA-MW-2S-1115	Total/NA	Water	680	411127
680-118989-8	PMA-MW-2S-1115-EB	Total/NA	Water	680	411127
LCS 680-411127/14-A	Lab Control Sample	Total/NA	Water	680	411127
MB 680-411127/13-A	Method Blank	Total/NA	Water	680	411127

US EPA ARCHIVE DOCUMENT

9


 TestAmerica Savannah

Lab Chronicle

Client: Solutia Inc.
Project/Site: 4Q15 PCB GW Sampling - 1403345

TestAmerica Job ID: 680-118989-1
SDG: KPM067

Client Sample ID: PMA-MW-6D-1115

Lab Sample ID: 680-118989-1

Date Collected: 11/12/15 13:22

Matrix: Water

Date Received: 11/13/15 09:34

Prep Type	Batch Type	Batch Method	Run	Dil Factor	Initial Amount	Final Amount	Batch Number	Prepared or Analyzed	Analyst	Lab
Total/NA	Prep	680			986.5 mL	1.0 mL	411127	11/19/15 15:51	RBS	TAL SAV
Total/NA	Analysis	680		1	986.5 mL	1.0 mL	412678	12/02/15 15:32	NED	TAL SAV

Client Sample ID: PMA-MW-5M-1115

Lab Sample ID: 680-118989-2

Date Collected: 11/12/15 14:08

Matrix: Water

Date Received: 11/13/15 09:34

Prep Type	Batch Type	Batch Method	Run	Dil Factor	Initial Amount	Final Amount	Batch Number	Prepared or Analyzed	Analyst	Lab
Total/NA	Prep	680			1014.6 mL	1.0 mL	411127	11/19/15 15:51	RBS	TAL SAV
Total/NA	Analysis	680		1	1014.6 mL	1.0 mL	412678	12/02/15 16:01	NED	TAL SAV

Client Sample ID: PMA-MW-1M-1115

Lab Sample ID: 680-118989-3

Date Collected: 11/12/15 14:55

Matrix: Water

Date Received: 11/13/15 09:34

Prep Type	Batch Type	Batch Method	Run	Dil Factor	Initial Amount	Final Amount	Batch Number	Prepared or Analyzed	Analyst	Lab
Total/NA	Prep	680			982.2 mL	1.0 mL	411127	11/19/15 15:51	RBS	TAL SAV
Total/NA	Analysis	680		1	982.2 mL	1.0 mL	412678	12/02/15 16:29	NED	TAL SAV

Client Sample ID: PMA-MW-1S-1115

Lab Sample ID: 680-118989-4

Date Collected: 11/12/15 15:22

Matrix: Water

Date Received: 11/13/15 09:34

Prep Type	Batch Type	Batch Method	Run	Dil Factor	Initial Amount	Final Amount	Batch Number	Prepared or Analyzed	Analyst	Lab
Total/NA	Prep	680			1006.6 mL	1.0 mL	411127	11/19/15 15:51	RBS	TAL SAV
Total/NA	Analysis	680		1	1006.6 mL	1.0 mL	412678	12/02/15 16:58	NED	TAL SAV

Client Sample ID: PMA-MW-2M-1115

Lab Sample ID: 680-118989-5

Date Collected: 11/12/15 16:04

Matrix: Water

Date Received: 11/13/15 09:34

Prep Type	Batch Type	Batch Method	Run	Dil Factor	Initial Amount	Final Amount	Batch Number	Prepared or Analyzed	Analyst	Lab
Total/NA	Prep	680			1022.3 mL	1.0 mL	411127	11/19/15 15:51	RBS	TAL SAV
Total/NA	Analysis	680		5	1022.3 mL	1.0 mL	412678	12/02/15 17:26	NED	TAL SAV

Client Sample ID: PMA-MW-2M-1115-AD

Lab Sample ID: 680-118989-6

Date Collected: 11/12/15 16:04

Matrix: Water

Date Received: 11/13/15 09:34

Prep Type	Batch Type	Batch Method	Run	Dil Factor	Initial Amount	Final Amount	Batch Number	Prepared or Analyzed	Analyst	Lab
Total/NA	Prep	680			968.2 mL	1.0 mL	411127	11/19/15 15:51	RBS	TAL SAV
Total/NA	Analysis	680		5	968.2 mL	1.0 mL	412678	12/02/15 17:54	NED	TAL SAV

AWD 12/30/15
TestAmerica Savannah

US EPA ARCHIVE DOCUMENT

Lab Chronicle

Client: Solutia Inc.
Project/Site: 4Q15 PCB GW Sampling - 1403345

TestAmerica Job ID: 680-118989-1
SDG: KPM067

Client Sample ID: PMA-MW-2S-1115

Lab Sample ID: 680-118989-7

Date Collected: 11/12/15 16:24

Matrix: Water

Date Received: 11/13/15 09:34

Prep Type	Batch Type	Batch Method	Run	Dil Factor	Initial Amount	Final Amount	Batch Number	Prepared or Analyzed	Analyst	Lab
Total/NA	Prep	680			999.7 mL	1.0 mL	411127	11/19/15 15:51	RBS	TAL SAV
Total/NA	Analysis	680		1	999.7 mL	1.0 mL	412678	12/02/15 18:23	NED	TAL SAV

Client Sample ID: PMA-MW-2S-1115-EB

Lab Sample ID: 680-118989-8

Date Collected: 11/12/15 17:10

Matrix: Water

Date Received: 11/13/15 09:34

Prep Type	Batch Type	Batch Method	Run	Dil Factor	Initial Amount	Final Amount	Batch Number	Prepared or Analyzed	Analyst	Lab
Total/NA	Prep	680			982.8 mL	1.0 mL	411127	11/19/15 15:51	RBS	TAL SAV
Total/NA	Analysis	680		1	982.8 mL	1.0 mL	412678	12/02/15 18:51	NED	TAL SAV

Laboratory References:

TAL SAV = TestAmerica Savannah, 5102 LaRoche Avenue, Savannah, GA 31404, TEL (912)354-7858

US EPA ARCHIVE DOCUMENT

AWD 12/30/15
TestAmerica Savannah

TestAmerica Savannah
5102 LaRoche Avenue

Chain of Custody Record

TestAmerica
THE LEADER IN ENVIRONMENTAL TESTING

Savannah, GA 31404
phone 912.354.7858 fax

Regulatory Program: LV NPDES RCR Other: Emily White

TestAmerica Laboratories, Inc.

Client Contact Golder Associates Inc. 820 South Main Street St Charles, MO 63301 (636) 724-9191 Phone (636) 724-9323 FAX Project Name: <u>Q15 PCB GW Sampling-1403345</u> Site: <u>Soluta WG Krummrich Facility</u> P O # <u>42447936</u>		Project Manager: <u>Amanda Derhake</u> Tel/Fax: <u>636-724-9191</u>		Site Contact: <u>Lee Sumner</u> Lab Contact: <u>Michele Kersey</u>		Date: <u>11/12/15</u> Carrier: <u>FedEx</u>		COC No: _____ 1 of 1 COCs Sampler: <u>Emily White</u> For Lab Use Only: Walk-in Client: _____ Lab Sampling: _____ Job / SDG No.: _____				
Analysis Turnaround Time <input checked="" type="checkbox"/> CALENDAR <input type="checkbox"/> WORKING TAT if different from Below <u>Standard</u> <input type="checkbox"/> 2 <input type="checkbox"/> 1 week <input type="checkbox"/> 2 days <input type="checkbox"/> 1 day		Sample Identification		Sample Date	Sample Time	Sample Type (O=Comp, G=Grab)	Matrix	# of Cont.	Filtered Sample (Y/N)	Perform MS / MSD (Y/N)	Total PCBs by 880	Sample Specific Notes:
		PMA-MW-6D-1115		11/12/15	1322	G	W	2	N	2		3 coolers
		PMA-MW-5M-1115			1408			2	N	2		
		PMA-MW-1M-1115			1455			2	N	2		
		PMA-MW-1S-1115			1522			2	N	2		
		PMA-MW-1S-1115-MS			1522			2	N	2		
		PMA-MW-1S-1115-MSA			1522			2	N	2		
		PMA-MW-2M-1115			1604			2	N	2		
		PMA-MW-2M-1115-AD			1604			2	N	2		
		PMA-MW-2S-1115			1624			2	N	2		
		PMA-MW-2S-1115-EB			1710			2	N	2		
Preservation: 1= Ice, 2= HCl, 3= H2SO4, 4= NaOH, 5= NaOH, 6= Other		Possible Hazard Identification: Are any samples from a listed EPA Hazardous Waste? Please List any EPA Waste Codes for the sample in the Comments Section if the lab is to dispose of the sample.		Sample Disposal (A fee may be assessed if samples are retained longer than 1 month) <input checked="" type="checkbox"/> Non-Hazard <input type="checkbox"/> Flammab <input type="checkbox"/> Soln <input type="checkbox"/> Poison B <input type="checkbox"/> Unknown <input type="checkbox"/> Return to Client <input checked="" type="checkbox"/> Disposal by Lab <input type="checkbox"/> Archive for _____ Months								
Special Instructions/QC Requirements & Comments:				0.0/0.4 3.6/4.0 0.4/0.8								
Custody Seals Intact: <input type="checkbox"/> No		Custody Seal No.: <u>800916780089713000 88</u>		Cooler Temp. (°C): <u>6.5</u>		Cor'd:		Therm ID No.:				
Relinquished by: <u>Emily White</u>		Company: <u>Golder</u>		Date/Time: <u>11/12/15 10:55</u>		Received by: <u>[Signature]</u>		Company: <u>TA</u>		Date/Time: <u>11-13-15 9:34</u>		
Relinquished by:		Company:		Date/Time:		Received by:		Company:		Date/Time:		
Relinquished by:		Company:		Date/Time:		Received in Laboratory by:		Company:		Date/Time:		

Page 20 of 22

PAUD 10/23/15

Login Sample Receipt Checklist

Client: Solutia Inc.

Job Number: 680-118989-1

SDG Number: KPM067

Login Number: 118989

List Number: 1

Creator: White, Menica R

List Source: TestAmerica Savannah

Question	Answer	Comment
Radioactivity wasn't checked or is \leq background as measured by a survey meter.	N/A	
The cooler's custody seal, if present, is intact.	True	
Sample custody seals, if present, are intact.	True	
The cooler or samples do not appear to have been compromised or tampered with.	True	
Samples were received on ice.	True	
Cooler Temperature is acceptable.	True	
Cooler Temperature is recorded.	True	
COC is present.	True	
COC is filled out in ink and legible.	True	
COC is filled out with all pertinent information.	True	
Is the Field Sampler's name present on COC?	N/A	
There are no discrepancies between the containers received and the COC.	True	
Samples are received within Holding Time.	True	
Sample containers have legible labels.	True	
Containers are not broken or leaking.	True	
Sample collection date/times are provided.	True	
Appropriate sample containers are used.	True	
Sample bottles are completely filled.	True	
Sample Preservation Verified.	True	
There is sufficient vol. for all requested analyses, incl. any requested MS/MSDs	True	
Containers requiring zero headspace have no headspace or bubble is $<6\text{mm}$ ($1/4"$).	N/A	
Multiphasic samples are not present.	True	
Samples do not require splitting or compositing.	True	
Residual Chlorine Checked.	N/A	

US EPA ARCHIVE DOCUMENT

12

Certification Summary

Client: Solutia Inc.
Project/Site: 4Q15 PCB GW Sampling - 1403345

TestAmerica Job ID: 680-118989-1
SDG: KPM067

Laboratory: TestAmerica Savannah

The certifications listed below are applicable to this report.

Authority	Program	EPA Region	Certification ID	Expiration Date
Illinois	NELAP	5	200022	11-30-15 *

US EPA ARCHIVE DOCUMENT

13

* Certification renewal pending - certification considered valid.

MWD 12/20/15
TestAmerica Savannah



Level IV Data Validation Summary
Solutia Inc., W.G. Krummrich, Sauget, Illinois
4Q15 PCB Groundwater Quality Assessment

Company Name: Golder Associates
Project Name: WGK-4Q15 PCB
Reviewer: A. Derhake
Laboratory: TestAmerica
SDG#: KPM068
Matrix: Water

Project Manager: A. Derhake
Project Number: 140-3345
Sample Date: November 2015

Analytical Method: PCB (680)

Sample Names: PMA-MW-3M-1115, PMA-MW-3S-1115, PMA-MW-4D-1115, and PMA-MW-4S-1115

Table with 4 columns: Field Information, YES, NO, NA. Rows include sampling dates noted and laboratory narrative deficiencies.

Comments:

PCBs: Sample PMA-MW-4S-1115 required a dilution prior to analysis, reporting limits were adjusted accordingly.

Table with 4 columns: Chain-of-Custody (COC), YES, NO, NA. Rows include COC signed by both field and laboratory personnel and samples received in good condition.

Comments: Samples were received at 1.8°C, outside the 4°C +/- 2°C criteria.

Table with 4 columns: General, YES, NO, NA. Rows include hold times met, preservatives used, correct method used, and sample dilutions noted.

Comments: Detections in diluted analysis were qualified.

Table with 4 columns: Calibrations, YES, NO, NA. Rows include initial and continuing calibrations analyzed at appropriate frequency.

Comments: None

Table with 4 columns: Blanks, YES, NO, NA. Rows include blanks performed at required frequency and analytes detected in any blanks.

Comments: None

US EPA ARCHIVE DOCUMENT





Matrix Spike/Matrix Spike Duplicate (MS/MSD)

YES NO NA

- a) Was MS/MSD accuracy criteria met?
- b) Was MS/MSD precision criteria met?

Comments: None

Laboratory Control Sample (LCS)

YES NO NA

- a) LCS analyzed at the appropriate frequency and met appropriate standards?

Comments: None

Surrogate (System Monitoring) Compounds

YES NO NA

- a) Surrogate compounds analyzed at the appropriate frequency and met appropriate standards?

Comments: None

Duplicates

YES NO NA

- a) Were field duplicates collected?
- b) Was field duplicate precision criteria met?

Comments: None

Additional Comments: None

Qualifications:

Quality Control Issue	Compound(s)	Qualifier	Samples Affected
Compounds analyzed at a dilution	Heptachlorobiphenyl, Hexachlorobiphenyl, Octachlorobiphenyl, Monochlorobiphenyl, Dichlorobiphenyl, Pentachlorobiphenyl, Tetrachlorobiphenyl, and Trichlorobiphenyl	D	PMA-MW-4S

US EPA ARCHIVE DOCUMENT

SDG KPM068

Sample Results from:

**PMA-MW-3S
PMA-MW-3M
PMA-MW-4S
PMW-MW-4D**

TestAmerica

THE LEADER IN ENVIRONMENTAL TESTING

ANALYTICAL REPORT

TestAmerica Laboratories, Inc.
TestAmerica Savannah
5102 LaRoche Avenue
Savannah, GA 31404
Tel: (912)354-7858

TestAmerica Job ID: 680-119038-1
TestAmerica Sample Delivery Group: KPM068
Client Project/Site: 4Q15 PCB GW Sampling - 1403345

For:
Solutia Inc.
575 Maryville Centre Dr.
Saint Louis, Missouri 63141

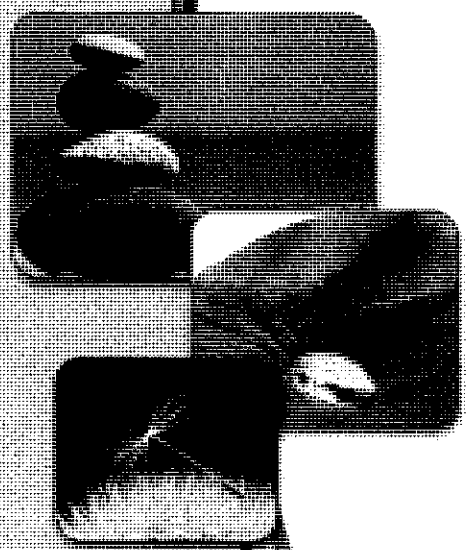
Attn: Mr. Jerry Rinaldi



Authorized for release by:
12/4/2015 12:07:31 PM

Michele Kersey, Project Manager I
(912)354-7858
michele.kersey@testamericainc.com

US EPA ARCHIVE DOCUMENT



LINKS

Review your project results through
Total Access

Have a Question?
Ask The Expert

Visit us at:
www.testamericainc.com

The test results in this report meet all 2003 NELAC and 2009 TNI requirements for accredited parameters, exceptions are noted in this report. This report may not be reproduced except in full, and with written approval from the laboratory. For questions please contact the Project Manager at the e-mail address or telephone number listed on this page.

This report has been electronically signed and authorized by the signatory. Electronic signature is intended to be the legally binding equivalent of a traditionally handwritten signature.

Results relate only to the items tested and the sample(s) as received by the laboratory.

AKD
12/30/15

Table of Contents

Cover Page	1
Table of Contents	2
Case Narrative	3
Sample Summary	4
Method Summary	5
Definitions	6
Client Sample Results	7
QC Sample Results	11
QC Association	12
Chronicle	13
Chain of Custody	14
Receipt Checklists	15
Certification Summary	16

US EPA ARCHIVE DOCUMENT

AWD
12/30/15

Case Narrative

Client: Solutia Inc.
Project/Site: 4Q15 PCB GW Sampling - 1403345

TestAmerica Job ID: 680-119038-1
SDG: KPM068

Job ID: 680-119038-1

Laboratory: TestAmerica Savannah

Narrative

CASE NARRATIVE

Client: Solutia Inc.

Project: 4Q15 PCB GW Sampling - 1403345

Report Number: 680-119038-1

With the exceptions noted as flags or footnotes, standard analytical protocols were followed in the analysis of the samples and no problems were encountered or anomalies observed. In addition all laboratory quality control samples were within established control limits, with any exceptions noted below. Each sample was analyzed to achieve the lowest possible reporting limit within the constraints of the method. In the event of interference or analytes present at high concentrations, samples may be diluted. For diluted samples, the reporting limits are adjusted relative to the dilution required.

RECEIPT

The samples were received on 11/14/2015 10:20 AM; the samples arrived in good condition, properly preserved and, where required, on ice. The temperature of the cooler at receipt was 1.8° C.

POLYCHLORINATED BIPHENYLS (PCBS)

Samples PMA-MW-3M-1115 (680-119038-1), PMA-MW-3S-1115 (680-119038-2), PMA-MW-4D-1115 (680-119038-3) and PMA-MW-4S-1115 (680-119038-4) were analyzed for polychlorinated biphenyls (PCBs) in accordance with EPA Method 680. The samples were prepared on 11/19/2015 and analyzed on 12/02/2015 and 12/03/2015.

Sample PMA-MW-4S-1115 (680-119038-4)[5X] required dilution prior to analysis. The reporting limits have been adjusted accordingly.

No analytical or quality issues were noted, other than those described above or in the Definitions/Glossary page.

US EPA ARCHIVE DOCUMENT

Sample Summary

Client: Solutia Inc.
Project/Site: 4Q15 PCB GW Sampling - 1403345

TestAmerica Job ID: 680-119038-1
SDG: KPM068

Lab Sample ID	Client Sample ID	Matrix	Collected	Received
680-119038-1	PMA-MW-3M-1115	Water	11/13/15 10:20	11/14/15 10:20
680-119038-2	PMA-MW-3S-1115	Water	11/13/15 10:50	11/14/15 10:20
680-119038-3	PMA-MW-4D-1115	Water	11/13/15 11:35	11/14/15 10:20
680-119038-4	PMA-MW-4S-1115	Water	11/13/15 12:05	11/14/15 10:20

US EPA ARCHIVE DOCUMENT

4

AWD 12/20/15
TestAmerica Savannah

Method Summary

Client: Solutia Inc.
Project/Site: 4Q15 PCB GW Sampling - 1403345

TestAmerica Job ID: 680-119038-1
SDG: KPM068

Method	Method Description	Protocol	Laboratory
680	Polychlorinated Biphenyls (PCBs) (GC/MS)	EPA	TAL SAV

Protocol References:

EPA = US Environmental Protection Agency

Laboratory References:

TAL SAV = TestAmerica Savannah, 5102 LaRoche Avenue, Savannah, GA 31404, TEL (912)354-7858

US EPA ARCHIVE DOCUMENT

5

AWD 12/30/15
TestAmerica Savannah

Definitions/Glossary

Client: Solutia Inc.
Project/Site: 4Q15 PCB GW Sampling - 1403345

TestAmerica Job ID: 680-119038-1
SDG: KPM068

Qualifiers

GC/MS Semi VOA

Qualifier	Qualifier Description
U	Indicates the analyte was analyzed for but not detected.

Glossary

Abbreviation	These commonly used abbreviations may or may not be present in this report.
⌘	Listed under the "D" column to designate that the result is reported on a dry weight basis
%R	Percent Recovery
CFL	Contains Free Liquid
CNF	Contains no Free Liquid
DER	Duplicate error ratio (normalized absolute difference)
Dil Fac	Dilution Factor
DL, RA, RE, IN	Indicates a Dilution, Re-analysis, Re-extraction, or additional initial metals/anion analysis of the sample
DLC	Decision level concentration
MDA	Minimum detectable activity
EDL	Estimated Detection Limit
MDC	Minimum detectable concentration
MDL	Method Detection Limit
ML	Minimum Level (Dioxin)
NC	Not Calculated
ND	Not detected at the reporting limit (or MDL or EDL if shown)
PQL	Practical Quantitation Limit
QC	Quality Control
RER	Relative error ratio
RL	Reporting Limit or Requested Limit (Radiochemistry)
RPD	Relative Percent Difference, a measure of the relative difference between two points
TEF	Toxicity Equivalent Factor (Dioxin)
TEQ	Toxicity Equivalent Quotient (Dioxin)

US EPA ARCHIVE DOCUMENT

6

AWD 12/30/15
TestAmerica Savannah

Client Sample Results

Client: Solutia Inc.
 Project/Site: 4Q15 PCB GW Sampling - 1403345

TestAmerica Job ID: 680-119038-1
 SDG: KPM068

Client Sample ID: PMA-MW-3M-1115

Lab Sample ID: 680-119038-1

Date Collected: 11/13/15 10:20

Matrix: Water

Date Received: 11/14/15 10:20

Method: 680 - Polychlorinated Biphenyls (PCBs) (GC/MS)

Analyte	Result	Qualifier	RL	MDL	Unit	D	Prepared	Analyzed	Dil Fac
Heptachlorobiphenyl	0.30	U	0.30		ug/L		11/19/15 15:51	12/02/15 19:19	1
Hexachlorobiphenyl	0.20	U	0.20		ug/L		11/19/15 15:51	12/02/15 19:19	1
Nonachlorobiphenyl	0.50	U	0.50		ug/L		11/19/15 15:51	12/02/15 19:19	1
Octachlorobiphenyl	0.30	U	0.30		ug/L		11/19/15 15:51	12/02/15 19:19	1
Monochlorobiphenyl	0.80		0.10		ug/L		11/19/15 15:51	12/02/15 19:19	1
DCB Decachlorobiphenyl	0.50	U	0.50		ug/L		11/19/15 15:51	12/02/15 19:19	1
Dichlorobiphenyl	0.10	U	0.10		ug/L		11/19/15 15:51	12/02/15 19:19	1
Pentachlorobiphenyl	0.20	U	0.20		ug/L		11/19/15 15:51	12/02/15 19:19	1
Tetrachlorobiphenyl	0.20	U	0.20		ug/L		11/19/15 15:51	12/02/15 19:19	1
Trichlorobiphenyl	0.10	U	0.10		ug/L		11/19/15 15:51	12/02/15 19:19	1
Surrogate	%Recovery	Qualifier	Limits				Prepared	Analyzed	Dil Fac
Decachlorobiphenyl-13C12	67		25 - 113				11/19/15 15:51	12/02/15 19:19	1

US EPA ARCHIVE DOCUMENT

7

AWD 12/30/15
 TestAmerica Savannah

Client Sample Results

Client: Solutia Inc.
 Project/Site: 4Q15 PCB GW Sampling - 1403345

TestAmerica Job ID: 680-119038-1
 SDG: KPM068

Client Sample ID: PMA-MW-3S-1115

Lab Sample ID: 680-119038-2

Date Collected: 11/13/15 10:50

Matrix: Water

Date Received: 11/14/15 10:20

Method: 680 - Polychlorinated Biphenyls (PCBs) (GC/MS)

Analyte	Result	Qualifier	RL	MDL	Unit	D	Prepared	Analyzed	Dil Fac
Heptachlorobiphenyl	0.29	U	0.29		ug/L		11/19/15 15:51	12/02/15 19:48	1
Hexachlorobiphenyl	0.20	U	0.20		ug/L		11/19/15 15:51	12/02/15 19:48	1
Nonachlorobiphenyl	0.49	U	0.49		ug/L		11/19/15 15:51	12/02/15 19:48	1
Octachlorobiphenyl	0.29	U	0.29		ug/L		11/19/15 15:51	12/02/15 19:48	1
Monochlorobiphenyl	0.50		0.098		ug/L		11/19/15 15:51	12/02/15 19:48	1
DCB Decachlorobiphenyl	0.49	U	0.49		ug/L		11/19/15 15:51	12/02/15 19:48	1
Dichlorobiphenyl	0.19		0.098		ug/L		11/19/15 15:51	12/02/15 19:48	1
Pentachlorobiphenyl	0.20	U	0.20		ug/L		11/19/15 15:51	12/02/15 19:48	1
Tetrachlorobiphenyl	0.20	U	0.20		ug/L		11/19/15 15:51	12/02/15 19:48	1
Trichlorobiphenyl	0.098	U	0.098		ug/L		11/19/15 15:51	12/02/15 19:48	1
Surrogate	%Recovery	Qualifier	Limits				Prepared	Analyzed	Dil Fac
Decachlorobiphenyl-13C12	79		25 - 113				11/19/15 15:51	12/02/15 19:48	1

US EPA ARCHIVE DOCUMENT

7

AWD 12/20/15
 TestAmerica Savannah

Client Sample Results

Client: Solutia Inc.
 Project/Site: 4Q15 PCB GW Sampling - 1403345

TestAmerica Job ID: 680-119038-1
 SDG: KPM068

Client Sample ID: PMA-MW-4D-1115

Lab Sample ID: 680-119038-3

Date Collected: 11/13/15 11:35

Matrix: Water

Date Received: 11/14/15 10:20

Method: 680 - Polychlorinated Biphenyls (PCBs) (GC/MS)

Analyte	Result	Qualifier	RL	MDL	Unit	D	Prepared	Analyzed	Dil Fac
Heptachlorobiphenyl	0.30	U	0.30		ug/L		11/19/15 15:51	12/03/15 02:31	1
Hexachlorobiphenyl	0.20	U	0.20		ug/L		11/19/15 15:51	12/03/15 02:31	1
Nonachlorobiphenyl	0.49	U	0.49		ug/L		11/19/15 15:51	12/03/15 02:31	1
Octachlorobiphenyl	0.30	U	0.30		ug/L		11/19/15 15:51	12/03/15 02:31	1
Monochlorobiphenyl	0.92		0.099		ug/L		11/19/15 15:51	12/03/15 02:31	1
DCB Decachlorobiphenyl	0.49	U	0.49		ug/L		11/19/15 15:51	12/03/15 02:31	1
Dichlorobiphenyl	0.94		0.099		ug/L		11/19/15 15:51	12/03/15 02:31	1
Pentachlorobiphenyl	0.20	U	0.20		ug/L		11/19/15 15:51	12/03/15 02:31	1
Tetrachlorobiphenyl	0.20	U	0.20		ug/L		11/19/15 15:51	12/03/15 02:31	1
Trichlorobiphenyl	0.099	U	0.099		ug/L		11/19/15 15:51	12/03/15 02:31	1
Surrogate	%Recovery	Qualifier	Limits				Prepared	Analyzed	Dil Fac
Decachlorobiphenyl-13C12	76		25 - 113				11/19/15 15:51	12/03/15 02:31	1

US EPA ARCHIVE DOCUMENT

7

AWD12/3/15
 TestAmerica Savannah

Client Sample Results

Client: Solutia Inc.
 Project/Site: 4Q15 PCB GW Sampling - 1403345

TestAmerica Job ID: 680-119038-1
 SDG: KPM068

Client Sample ID: PMA-MW-4S-1115

Lab Sample ID: 680-119038-4

Date Collected: 11/13/15 12:05

Matrix: Water

Date Received: 11/14/15 10:20

Method: 680 - Polychlorinated Biphenyls (PCBs) (GC/MS)

Analyte	Result	Qualifier	RL	MDL	Unit	D	Prepared	Analyzed	Dil Fac
Heptachlorobiphenyl	15	D	1.5		ug/L		11/19/15 15:51	12/03/15 03:00	5
Hexachlorobiphenyl	16	D	0.99		ug/L		11/19/15 15:51	12/03/15 03:00	5
Nonachlorobiphenyl	2.5	U	2.5		ug/L		11/19/15 15:51	12/03/15 03:00	5
Octachlorobiphenyl	2.2	D	1.5		ug/L		11/19/15 15:51	12/03/15 03:00	5
Monochlorobiphenyl	2.8	D	0.50		ug/L		11/19/15 15:51	12/03/15 03:00	5
DCB Decachlorobiphenyl	2.5	U	2.5		ug/L		11/19/15 15:51	12/03/15 03:00	5
Dichlorobiphenyl	12	D	0.50		ug/L		11/19/15 15:51	12/03/15 03:00	5
Pentachlorobiphenyl	11	D	0.99		ug/L		11/19/15 15:51	12/03/15 03:00	5
Tetrachlorobiphenyl	18	D	0.99		ug/L		11/19/15 15:51	12/03/15 03:00	5
Trichlorobiphenyl	19	D	0.50		ug/L		11/19/15 15:51	12/03/15 03:00	5
Surrogate	%Recovery	Qualifier	Limits				Prepared	Analyzed	Dil Fac
Decachlorobiphenyl-13C12	78		25 - 113				11/19/15 15:51	12/03/15 03:00	5

US EPA ARCHIVE DOCUMENT

7

Amo Valdez
 TestAmerica Savannah

QC Sample Results

Client: Solutia Inc.
Project/Site: 4Q15 PCB GW Sampling - 1403345

TestAmerica Job ID: 680-119038-1
SDG: KPM068

Method: 680 - Polychlorinated Biphenyls (PCBs) (GC/MS)

Lab Sample ID: MB 680-411127/13-A

Matrix: Water

Analysis Batch: 412678

Client Sample ID: Method Blank

Prep Type: Total/NA

Prep Batch: 411127

Analyte	MB MB		RL	MDL	Unit	D	Prepared	Analyzed	Dil Fac
	Result	Qualifier							
Heptachlorobiphenyl	0.30	U	0.30		ug/L		11/19/15 15:51	12/02/15 13:38	1
Hexachlorobiphenyl	0.20	U	0.20		ug/L		11/19/15 15:51	12/02/15 13:38	1
Nonachlorobiphenyl	0.50	U	0.50		ug/L		11/19/15 15:51	12/02/15 13:38	1
Octachlorobiphenyl	0.30	U	0.30		ug/L		11/19/15 15:51	12/02/15 13:38	1
Monochlorobiphenyl	0.10	U	0.10		ug/L		11/19/15 15:51	12/02/15 13:38	1
DCB Decachlorobiphenyl	0.50	U	0.50		ug/L		11/19/15 15:51	12/02/15 13:38	1
Dichlorobiphenyl	0.10	U	0.10		ug/L		11/19/15 15:51	12/02/15 13:38	1
Pentachlorobiphenyl	0.20	U	0.20		ug/L		11/19/15 15:51	12/02/15 13:38	1
Tetrachlorobiphenyl	0.20	U	0.20		ug/L		11/19/15 15:51	12/02/15 13:38	1
Trichlorobiphenyl	0.10	U	0.10		ug/L		11/19/15 15:51	12/02/15 13:38	1

Surrogate	MB MB		Limits	Prepared	Analyzed	Dil Fac
	%Recovery	Qualifier				
Decachlorobiphenyl-13C12	76		25 - 113	11/19/15 15:51	12/02/15 13:38	1

Lab Sample ID: LCS 680-411127/14-A

Matrix: Water

Analysis Batch: 412678

Client Sample ID: Lab Control Sample

Prep Type: Total/NA

Prep Batch: 411127

Analyte	Spike Added	LCS LCS		Unit	D	%Rec	Limits
		Result	Qualifier				
Heptachlorobiphenyl	6.00	4.76		ug/L		79	62 - 130
Hexachlorobiphenyl	4.00	3.15		ug/L		79	62 - 130
Nonachlorobiphenyl	10.0	10.9		ug/L		109	70 - 195
Octachlorobiphenyl	6.00	4.72		ug/L		79	64 - 130
Monochlorobiphenyl	2.00	1.19		ug/L		60	42 - 130
DCB Decachlorobiphenyl	10.0	7.43		ug/L		74	59 - 130
Dichlorobiphenyl	2.00	1.34		ug/L		67	49 - 130
Pentachlorobiphenyl	4.00	3.09		ug/L		77	63 - 130
Tetrachlorobiphenyl	4.00	2.97		ug/L		74	54 - 130
Trichlorobiphenyl	2.00	1.47		ug/L		74	51 - 130

Surrogate	LCS LCS		Limits
	%Recovery	Qualifier	
Decachlorobiphenyl-13C12	77		25 - 113

US EPA ARCHIVE DOCUMENT

8

AWD
12/30/15
TestAmerica Savannah

QC Association Summary

Client: Solutia Inc.
Project/Site: 4Q15 PCB GW Sampling - 1403345

TestAmerica Job ID: 680-119038-1
SDG: KPM068

GC/MS Semi VOA

Prep Batch: 411127

Lab Sample ID	Client Sample ID	Prep Type	Matrix	Method	Prep Batch
680-119038-1	PMA-MW-3M-1115	Total/NA	Water	680	
680-119038-2	PMA-MW-3S-1115	Total/NA	Water	680	
680-119038-3	PMA-MW-4D-1115	Total/NA	Water	680	
680-119038-4	PMA-MW-4S-1115	Total/NA	Water	680	
LCS 680-411127/14-A	Lab Control Sample	Total/NA	Water	680	
MB 680-411127/13-A	Method Blank	Total/NA	Water	680	

Analysis Batch: 412678

Lab Sample ID	Client Sample ID	Prep Type	Matrix	Method	Prep Batch
680-119038-1	PMA-MW-3M-1115	Total/NA	Water	680	411127
680-119038-2	PMA-MW-3S-1115	Total/NA	Water	680	411127
LCS 680-411127/14-A	Lab Control Sample	Total/NA	Water	680	411127
MB 680-411127/13-A	Method Blank	Total/NA	Water	680	411127

Analysis Batch: 412775

Lab Sample ID	Client Sample ID	Prep Type	Matrix	Method	Prep Batch
680-119038-3	PMA-MW-4D-1115	Total/NA	Water	680	411127
680-119038-4	PMA-MW-4S-1115	Total/NA	Water	680	411127

US EPA ARCHIVE DOCUMENT

9

AWD
12/30/15

TestAmerica Savannah

Lab Chronicle

Client: Solutia Inc.
Project/Site: 4Q15 PCB GW Sampling - 1403345

TestAmerica Job ID: 680-119038-1
SDG: KPM068

Client Sample ID: PMA-MW-3M-1115

Lab Sample ID: 680-119038-1

Date Collected: 11/13/15 10:20

Matrix: Water

Date Received: 11/14/15 10:20

Prep Type	Batch Type	Batch Method	Run	Dil Factor	Initial Amount	Final Amount	Batch Number	Prepared or Analyzed	Analyst	Lab
Total/NA	Prep	680			992.1 mL	1.0 mL	411127	11/19/15 15:51	RBS	TAL SAV
Total/NA	Analysis	680		1	992.1 mL	1.0 mL	412678	12/02/15 19:19	NED	TAL SAV

Client Sample ID: PMA-MW-3S-1115

Lab Sample ID: 680-119038-2

Date Collected: 11/13/15 10:50

Matrix: Water

Date Received: 11/14/15 10:20

Prep Type	Batch Type	Batch Method	Run	Dil Factor	Initial Amount	Final Amount	Batch Number	Prepared or Analyzed	Analyst	Lab
Total/NA	Prep	680			1019.9 mL	1.0 mL	411127	11/19/15 15:51	RBS	TAL SAV
Total/NA	Analysis	680		1	1019.9 mL	1.0 mL	412678	12/02/15 19:48	NED	TAL SAV

Client Sample ID: PMA-MW-4D-1115

Lab Sample ID: 680-119038-3

Date Collected: 11/13/15 11:35

Matrix: Water

Date Received: 11/14/15 10:20

Prep Type	Batch Type	Batch Method	Run	Dil Factor	Initial Amount	Final Amount	Batch Number	Prepared or Analyzed	Analyst	Lab
Total/NA	Prep	680			1014.4 mL	1.0 mL	411127	11/19/15 15:51	RBS	TAL SAV
Total/NA	Analysis	680		1	1014.4 mL	1.0 mL	412775	12/03/15 02:31	NED	TAL SAV

Client Sample ID: PMA-MW-4S-1115

Lab Sample ID: 680-119038-4

Date Collected: 11/13/15 12:05

Matrix: Water

Date Received: 11/14/15 10:20

Prep Type	Batch Type	Batch Method	Run	Dil Factor	Initial Amount	Final Amount	Batch Number	Prepared or Analyzed	Analyst	Lab
Total/NA	Prep	680			1007 mL	1.0 mL	411127	11/19/15 15:51	RBS	TAL SAV
Total/NA	Analysis	680		5	1007 mL	1.0 mL	412775	12/03/15 03:00	NED	TAL SAV

Laboratory References:

TAL SAV = TestAmerica Savannah, 5102 LaRoche Avenue, Savannah, GA 31404, TEL (912)354-7858

US EPA ARCHIVE DOCUMENT

10

AWD12/15
TestAmerica Savannah

Chain of Custody Record

Savannah, GA 31404
phone 912.354.7858 fax

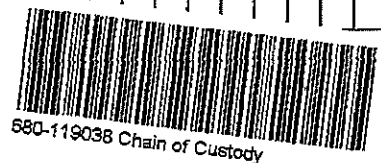
Regulatory Program: DVE NPDES RCR Other: Smitty White

TestAmerica Laboratories, Inc.

Client Contact Golder Associates Inc. 820 South Main Street St. Charles, MO 63301 (636) 724-9191 Phone (636) 724-9323 FAX Project Name: <u>Q15 PCB GW Sampling-1403345</u> Site: <u>Solutia WG Krummrich Facility</u> P O # <u>42447936</u>		Project Manager: <u>Amanda Derhake</u> Tel/Fax: <u>636-724-9191</u>		Site Contact: <u>Leslie Gauder</u> Lab Contact: <u>Michele Kersey</u>		Date: <u>11/3/15</u> Carrier: <u>FedEx</u>		COC No: _____ _____ of _____ COCs Sampler: <u>Smitty White</u> For Lab Use Only: Walk-in Client: _____ Lab Sampling: _____ Job / SDG No.: _____																																												
		Analysis Turnaround Time <input checked="" type="checkbox"/> CALENDAR <input type="checkbox"/> WORKING TAT if different from Below <u>Standard</u> <input checked="" type="checkbox"/> 2 <input type="checkbox"/> 1 week <input type="checkbox"/> 2 days <input type="checkbox"/> 1 day		<table border="1" style="width:100%; border-collapse: collapse;"> <tr> <th>Sample Identification</th> <th>Sample Date</th> <th>Sample Time</th> <th>Sample Type (C=Comp, G=Grab)</th> <th>Matrix</th> <th># of Cont</th> <th>Filtered Sample (Y/N)</th> <th>Perform MS / MSD (Y/N)</th> <th>Total PCBs by 680</th> </tr> <tr> <td><u>PMA-MW-3M-1115</u></td> <td><u>11/3/15</u></td> <td><u>1020</u></td> <td><u>G</u></td> <td><u>W</u></td> <td><u>2</u></td> <td><u>N</u></td> <td><u>2</u></td> <td></td> </tr> <tr> <td><u>PMA-MW-3S-1115</u></td> <td><u>1</u></td> <td><u>1050</u></td> <td><u>1</u></td> <td><u>1</u></td> <td><u>2</u></td> <td><u>N</u></td> <td><u>2</u></td> <td></td> </tr> <tr> <td><u>PMA-MW-4D-1115</u></td> <td><u>1</u></td> <td><u>1135</u></td> <td><u>1</u></td> <td><u>1</u></td> <td><u>2</u></td> <td><u>N</u></td> <td><u>2</u></td> <td></td> </tr> <tr> <td><u>PMA-MW-4S-1115</u></td> <td><u>1</u></td> <td><u>1205</u></td> <td><u>1</u></td> <td><u>1</u></td> <td><u>2</u></td> <td><u>N</u></td> <td><u>2</u></td> <td></td> </tr> </table>		Sample Identification	Sample Date	Sample Time	Sample Type (C=Comp, G=Grab)	Matrix	# of Cont	Filtered Sample (Y/N)	Perform MS / MSD (Y/N)	Total PCBs by 680	<u>PMA-MW-3M-1115</u>	<u>11/3/15</u>	<u>1020</u>	<u>G</u>	<u>W</u>	<u>2</u>	<u>N</u>	<u>2</u>		<u>PMA-MW-3S-1115</u>	<u>1</u>	<u>1050</u>	<u>1</u>	<u>1</u>	<u>2</u>	<u>N</u>	<u>2</u>		<u>PMA-MW-4D-1115</u>	<u>1</u>	<u>1135</u>	<u>1</u>	<u>1</u>	<u>2</u>	<u>N</u>	<u>2</u>		<u>PMA-MW-4S-1115</u>	<u>1</u>	<u>1205</u>	<u>1</u>	<u>1</u>	<u>2</u>	<u>N</u>	<u>2</u>		Sample Specific Notes:	
Sample Identification	Sample Date	Sample Time	Sample Type (C=Comp, G=Grab)			Matrix	# of Cont	Filtered Sample (Y/N)	Perform MS / MSD (Y/N)	Total PCBs by 680																																										
<u>PMA-MW-3M-1115</u>	<u>11/3/15</u>	<u>1020</u>	<u>G</u>			<u>W</u>	<u>2</u>	<u>N</u>	<u>2</u>																																											
<u>PMA-MW-3S-1115</u>	<u>1</u>	<u>1050</u>	<u>1</u>			<u>1</u>	<u>2</u>	<u>N</u>	<u>2</u>																																											
<u>PMA-MW-4D-1115</u>	<u>1</u>	<u>1135</u>	<u>1</u>			<u>1</u>	<u>2</u>	<u>N</u>	<u>2</u>																																											
<u>PMA-MW-4S-1115</u>	<u>1</u>	<u>1205</u>	<u>1</u>	<u>1</u>	<u>2</u>	<u>N</u>	<u>2</u>																																													
Preservation Used: <u>Ice, 2-HCl, 2-H2SO4, 4-HNO3, 5-NaOH, 6-Cr6+</u>		Possible Hazard Identification: Are any samples from a listed EPA Hazardous Waste? Please List any EPA Waste Codes for the sample in the Comments Section if the lab is to dispose of the sample.		<input checked="" type="checkbox"/> Non-Hazard <input type="checkbox"/> Flammable <input type="checkbox"/> Skin <input type="checkbox"/> Poison B <input type="checkbox"/> Unknown <input type="checkbox"/> Return to Client		e retained longer than 1 month) Archive for: _____ Months <u>680-11903</u>																																														
Special Instructions/QC Requirements & Comments:																																																				
Custody Seals Intact: <input type="checkbox"/> Yes <input type="checkbox"/> No		Custody Seal No.: <u>436273</u>		Cooler Temp. (°C): Obs'd: <u>1.4</u> Cor'd: <u>1.8</u>		Therm ID No: _____																																														
Relinquished by: <u>Smitty White</u>		Company: <u>Golder</u>		Date/Time: <u>11/3/15 10:45</u>		Received by:		Company: _____																																												
Relinquished by:		Company:		Date/Time:		Received by:		Company: _____																																												
Relinquished by:		Company:		Date/Time:		Received in Laboratory by: <u>m. kersey</u>		Company: <u>TA</u>																																												
								Date/Time: <u>11/14/15 10:20</u>																																												

Page 14 of 16

AND LABELS



Login Sample Receipt Checklist

Client: Solutia Inc.

Job Number: 680-119038-1
SDG Number: KPM068

Login Number: 119038
List Number: 1
Creator: Kicklighter, Marilyn D

List Source: TestAmerica Savannah

Question	Answer	Comment
Radioactivity wasn't checked or is \leq background as measured by a survey meter.	N/A	
The cooler's custody seal, if present, is intact.	True	
Sample custody seals, if present, are intact.	True	
The cooler or samples do not appear to have been compromised or tampered with.	True	
Samples were received on ice.	True	
Cooler Temperature is acceptable.	True	
Cooler Temperature is recorded.	True	
COC is present.	True	
COC is filled out in ink and legible.	True	
COC is filled out with all pertinent information.	True	
Is the Field Sampler's name present on COC?	True	
There are no discrepancies between the containers received and the COC.	True	
Samples are received within Holding Time.	True	
Sample containers have legible labels.	True	
Containers are not broken or leaking.	True	
Sample collection date/times are provided.	True	
Appropriate sample containers are used.	True	
Sample bottles are completely filled.	True	
Sample Preservation Verified.	N/A	
There is sufficient vol. for all requested analyses, incl. any requested MS/MSDs	True	
Containers requiring zero headspace have no headspace or bubble is $<6\text{mm}$ (1/4").	N/A	
Multiphasic samples are not present.	True	
Samples do not require splitting or compositing.	True	
Residual Chlorine Checked.	N/A	

US EPA ARCHIVE DOCUMENT

12

MWD
12/30/15

Certification Summary

Client: Solutia Inc.
Project/Site: 4Q15 PCB GW Sampling - 1403345

TestAmerica Job ID: 680-119038-1
SDG: KPM068

Laboratory: TestAmerica Savannah

The certifications listed below are applicable to this report.

Authority	Program	EPA Region	Certification ID	Expiration Date
Illinois	NELAP	5	200022	11-30-15 *

US EPA ARCHIVE DOCUMENT

13

* Certification renewal pending - certification considered valid.

MWD 12/30/15
TestAmerica Savannah

At Golder Associates we strive to be the most respected global group of companies specializing in ground engineering and environmental services. Employee owned since our formation in 1960, we have created a unique culture with pride in ownership, resulting in long-term organizational stability. Golder professionals take the time to build an understanding of client needs and of the specific environments in which they operate. We continue to expand our technical capabilities and have experienced steady growth with employees now operating from offices located throughout Africa, Asia, Australasia, Europe, North America and South America.

Africa	+ 27 11 254 4800
Asia	+ 852 2562 3658
Australasia	+ 61 3 8862 3500
Europe	+ 356 21 42 30 20
North America	+ 1 800 275 3281
South America	+ 55 21 3095 9500

solutions@golder.com
www.golder.com

US EPA ARCHIVE DOCUMENT

Golder Associates Inc.
820 S. Main Street, Suite 100
St. Charles, MO 63301 USA
Tel: (636) 724-9191
Fax: (636) 724-9323

