
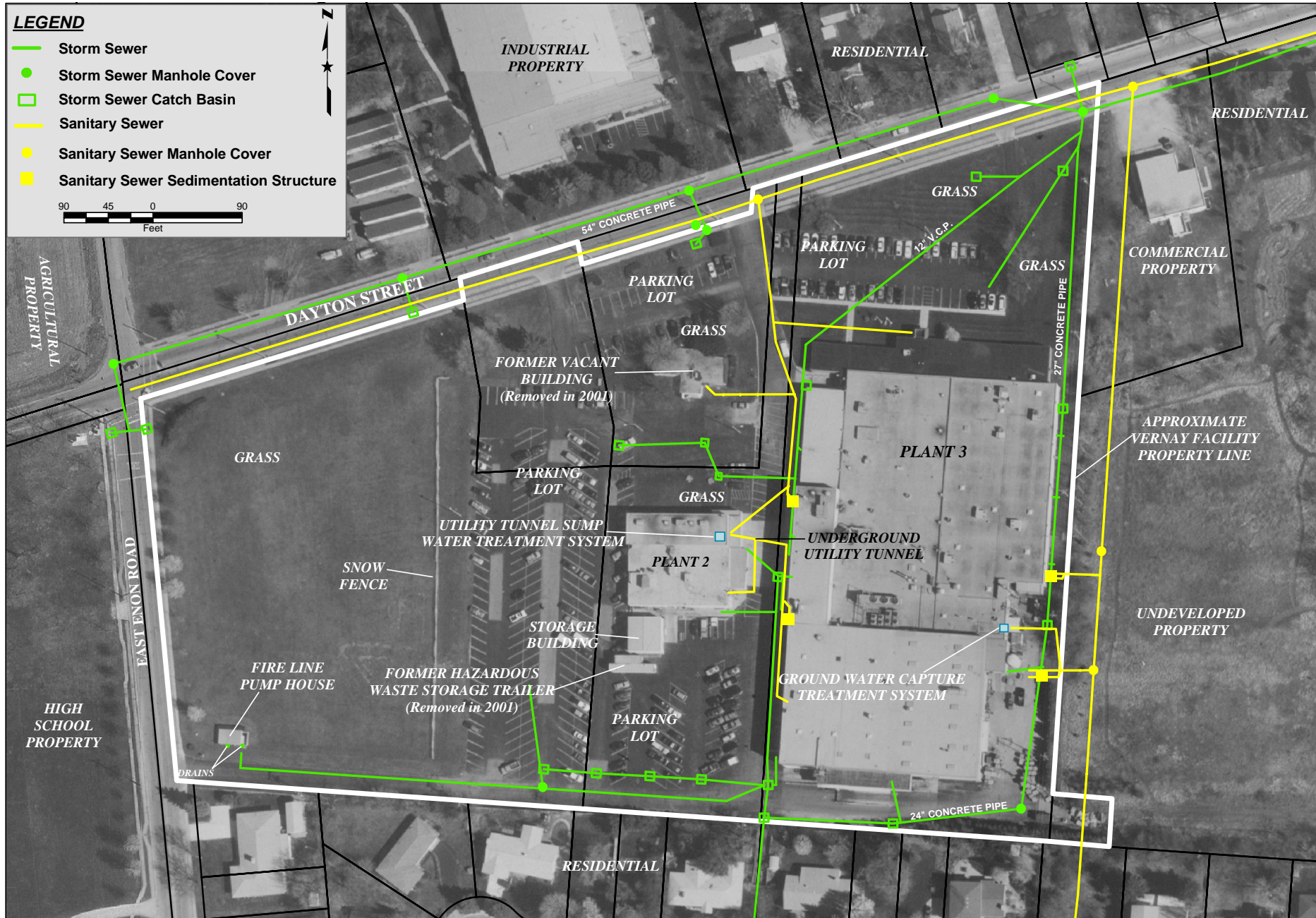
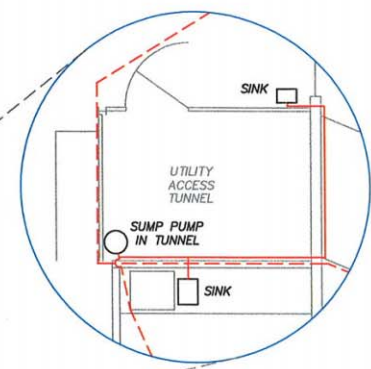
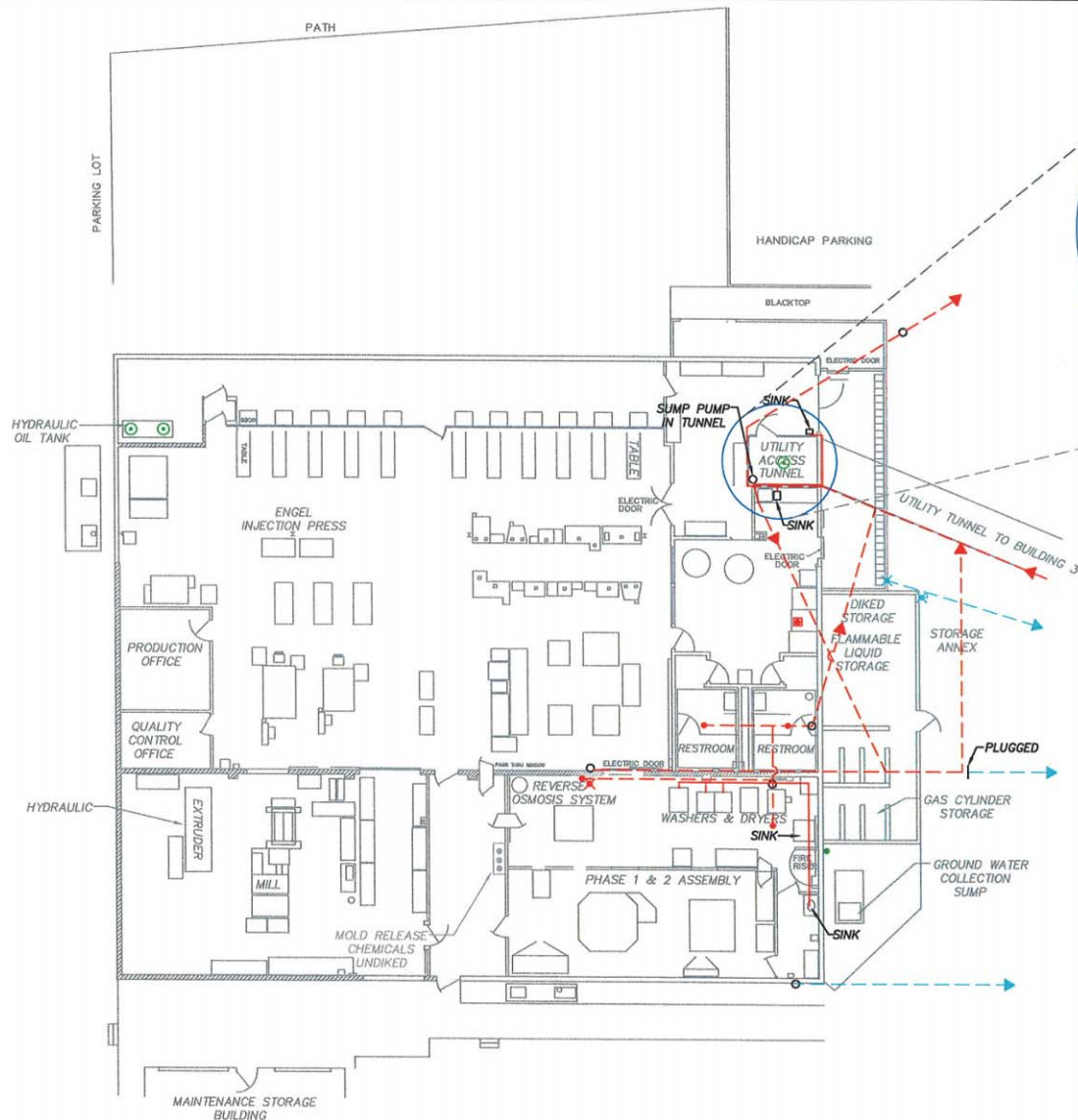


DRAWN BY <i>ALH</i>	APPROVED BY <i>KDK</i>	PROJECT NO. <i>292.11.31</i>	DATE <i>4/15/04</i>	FIGURE <i>1</i>
CLIENT <i>VERNAY LABORATORIES, INC.</i>			TITLE <i>FACILITY LOCATION</i>	
 The Payne Firm, Inc. Environmental Consultants Cincinnati, Ohio				
REFERENCE <i>Greene County Auditors, Digital Data: City, Township, and County Boundaries</i>				




CLIENT	VERNAV LABORATORIES, INC.	FIGURE NO.	2	DATE	6/29/04	The Payne Firm, Inc.
TITLE	FACILITY FEATURES	DRAWN BY	ALH	APPROVED BY	KDK	Environmental Consultants Cincinnati, Ohio
REFERENCE: Greene County Auditors, Orthophotograph (1998); State Plane Coordinates from Woolpert Surveying, LLP, Dayton, Ohio (NAD83/NAV88)		PROJECT NO.	292.11.31			

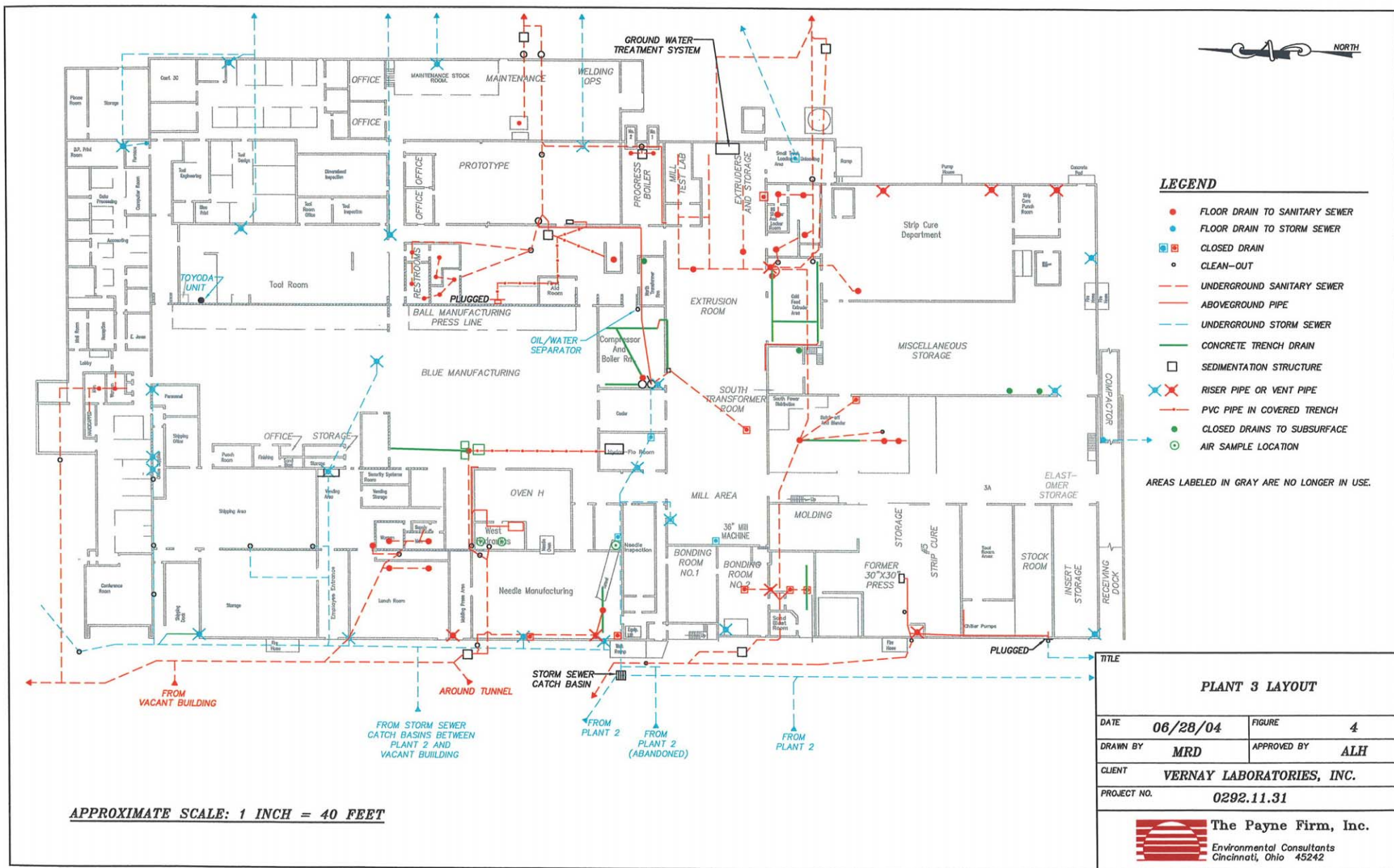


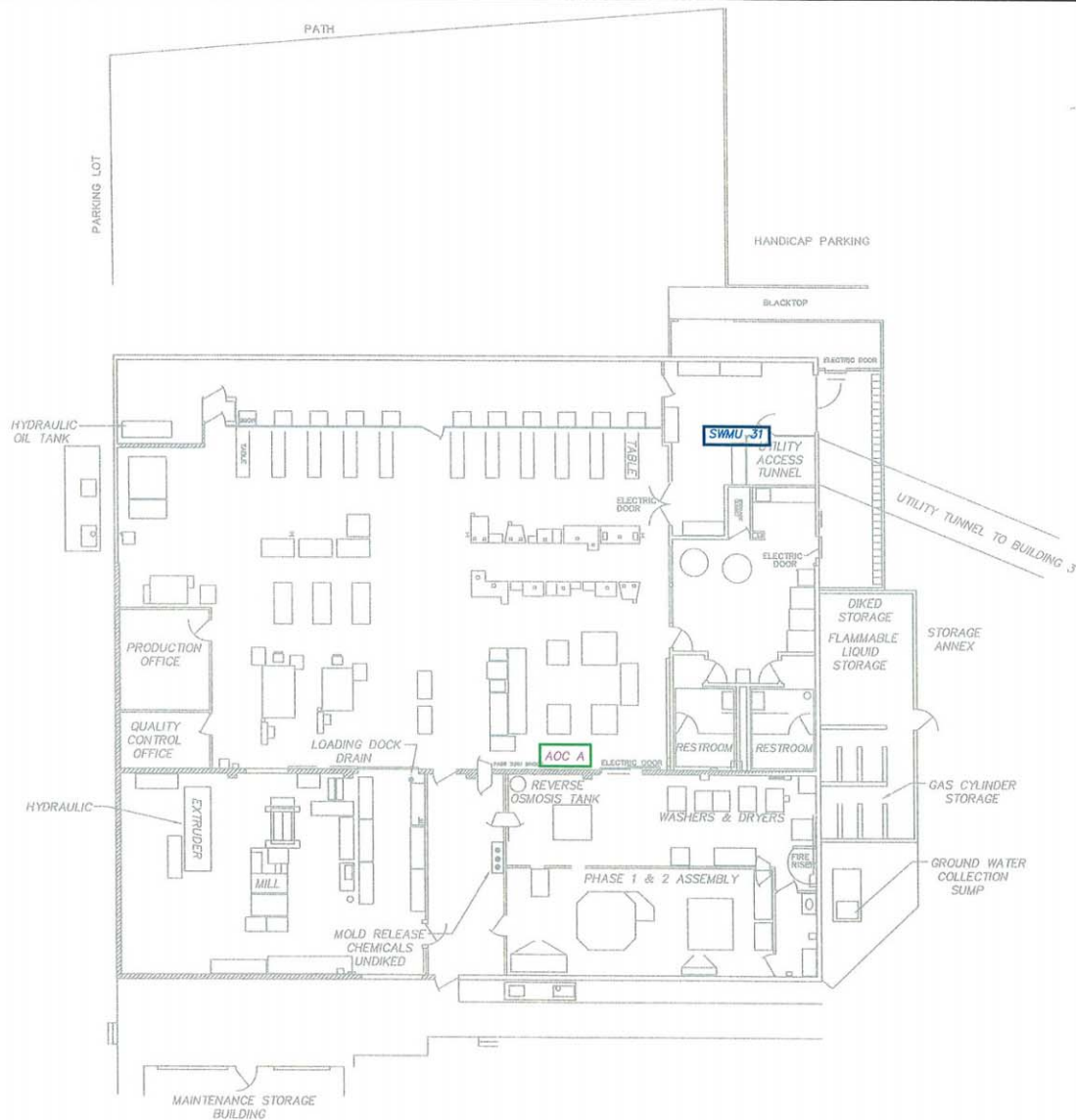
LEGEND

- FLOOR DRAIN
- CLEAN-OUT
- - - SANITARY SEWER
- - - ABOVE GROUND PVC PIPE
- - - STORM SEWER
- CLOSED FLOOR DRAIN
- CLOSED DRAINS TO SUBSURFACE
- ✕ RISER PIPE OR VENT PIPE
- ⊙ AIR SAMPLE LOCATION

APPROXIMATE SCALE: 1 INCH = 18 FEET

TITLE	
PLANT 2 LAYOUT	
DATE	06/28/04
FIGURE	3
DRAWN BY	MRD
APPROVED BY	ALH
CLIENT	VERNAY LABORATORIES, INC.
PROJECT NO.	0292.11.31
 The Payne Firm, Inc. Environmental Consultants Cincinnati, Ohio 45242	





LEGEND

SWMU 34 SOLID WASTE MANAGEMENT UNIT
IDENTIFIED IN THE JUNE 1, 2001 TECHLAW REPORT

AOC A AREA OF CONCERN IDENTIFIED IN
THE JUNE 1, 2001 TECHLAW REPORT


RELEASE POTENTIAL

HIGH

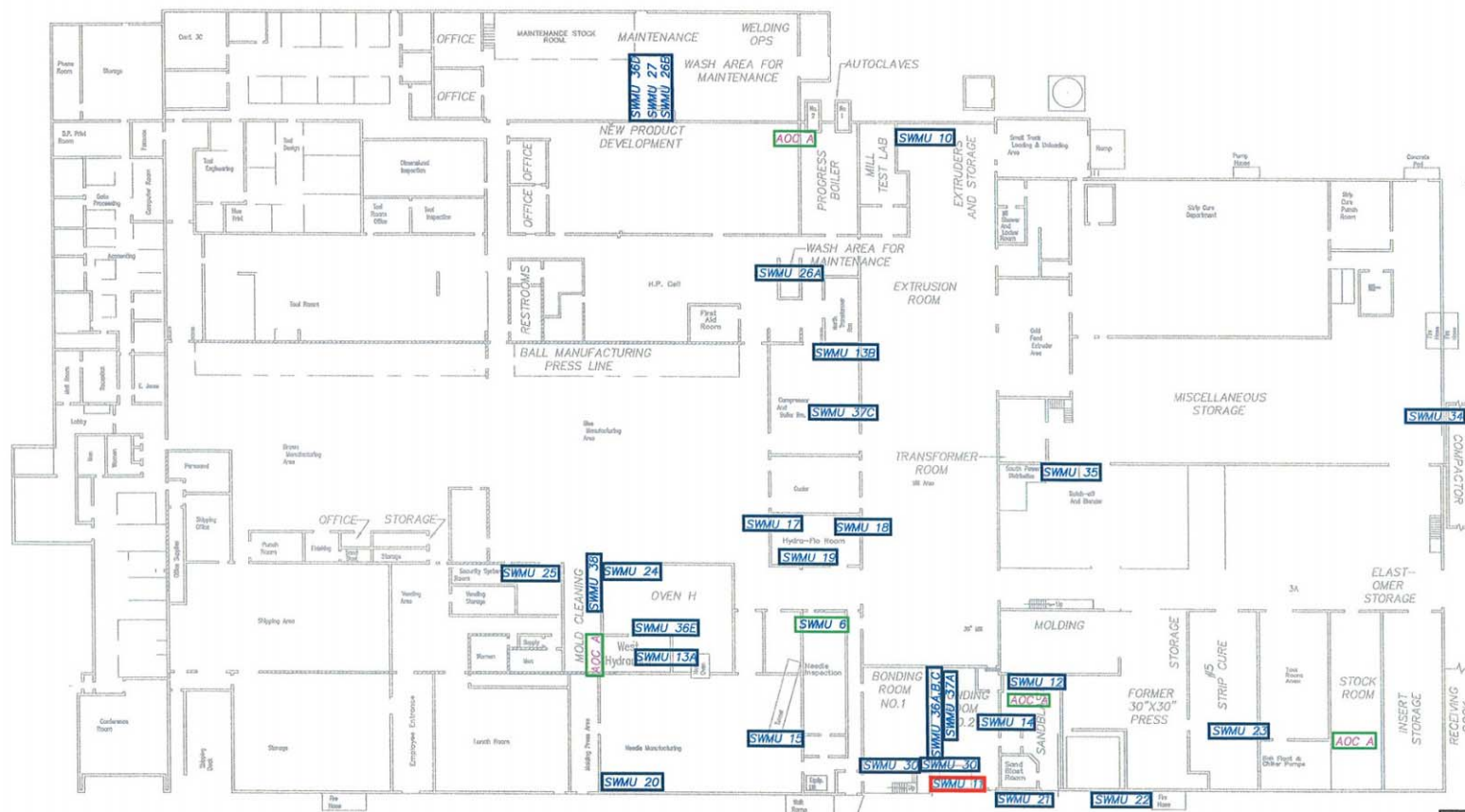
MEDIUM

LOW

NOTE: REFER TO TABLES 13 AND 14 IN THE
RFI PHASE I FOR A SUMMARY OF SWMU's AND AOC's

TITLE		PLANT 2 SOLID WASTE MANAGEMENT UNITS AND AREAS OF CONCERN	
DATE	06/28/04	FIGURE	5
DRAWN BY	MRD	APPROVED BY	ALH
CLIENT	VERNAY LABORATORIES, INC.		
PROJECT NO.	0292.11.31		
		The Payne Firm, Inc. Environmental Consultants Cincinnati, Ohio 45242	

APPROXIMATE SCALE: 1 INCH = 18 FEET



LEGEND

SWMU 34 SOLID WASTE MANAGEMENT UNIT IDENTIFIED IN THE JUNE 1, 2001 TECHLAW REPORT
AOC A AREA OF CONCERN IDENTIFIED IN THE JUNE 1, 2001 TECHLAW REPORT


RELEASE POTENTIAL
 HIGH
 MEDIUM
 LOW

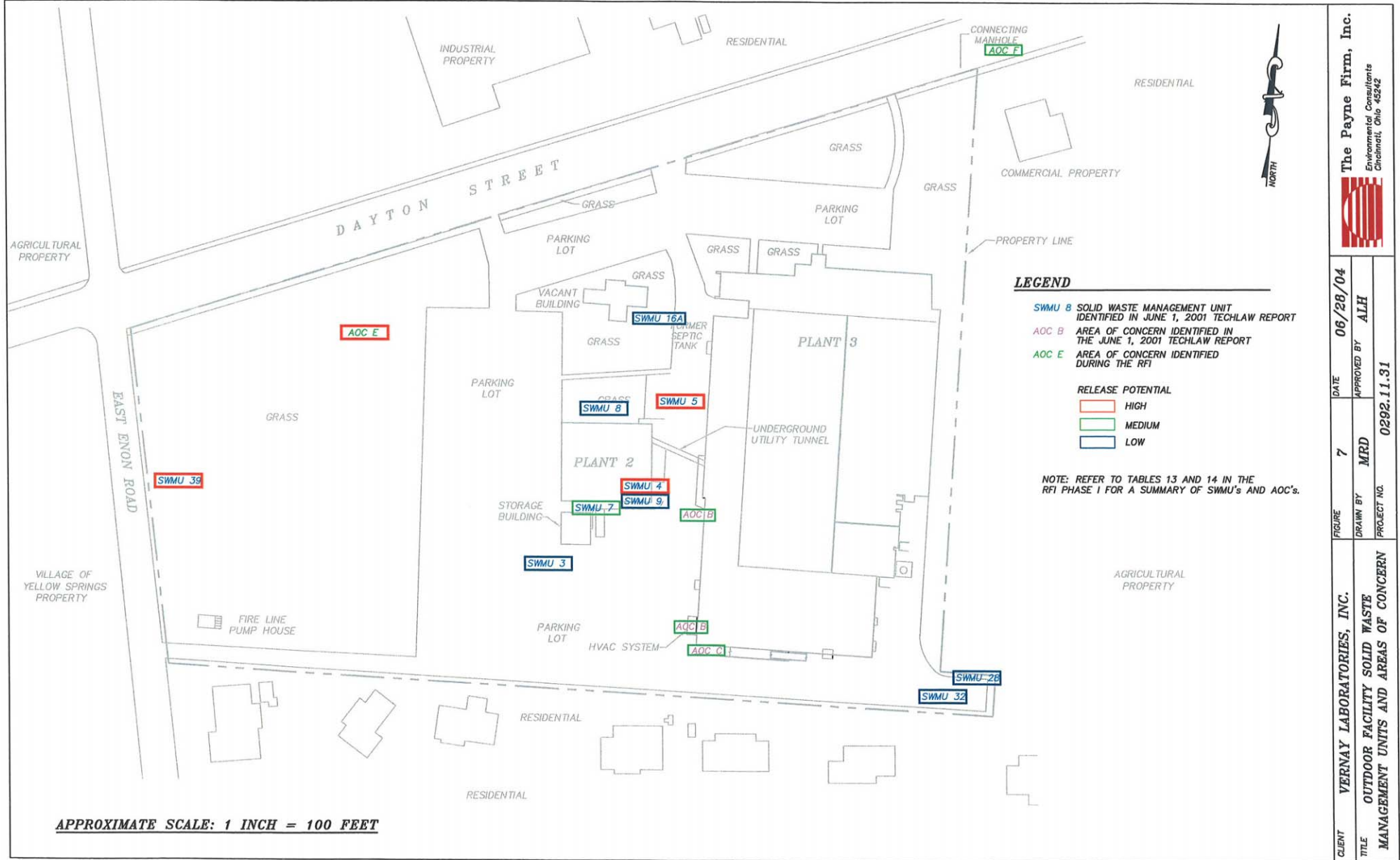
AREAS LABELED IN GRAY ARE NO LONGER IN USE.

NOTE: REFER TO TABLES 13 AND 14 IN THE RFI PHASE I FOR A SUMMARY OF SWMU'S AND AOC'S


- SWMU 1 — PROCESS SEWER LINES AND FLOOR DRAINS
- SWMU 2 — STORM SEWER SYSTEM
- SWMU 29 — HYDRAULIC OIL TRENCH SYSTEM
- SWMU 33 — TRASH TOTES

APPROXIMATE SCALE: 1 INCH = 40 FEET

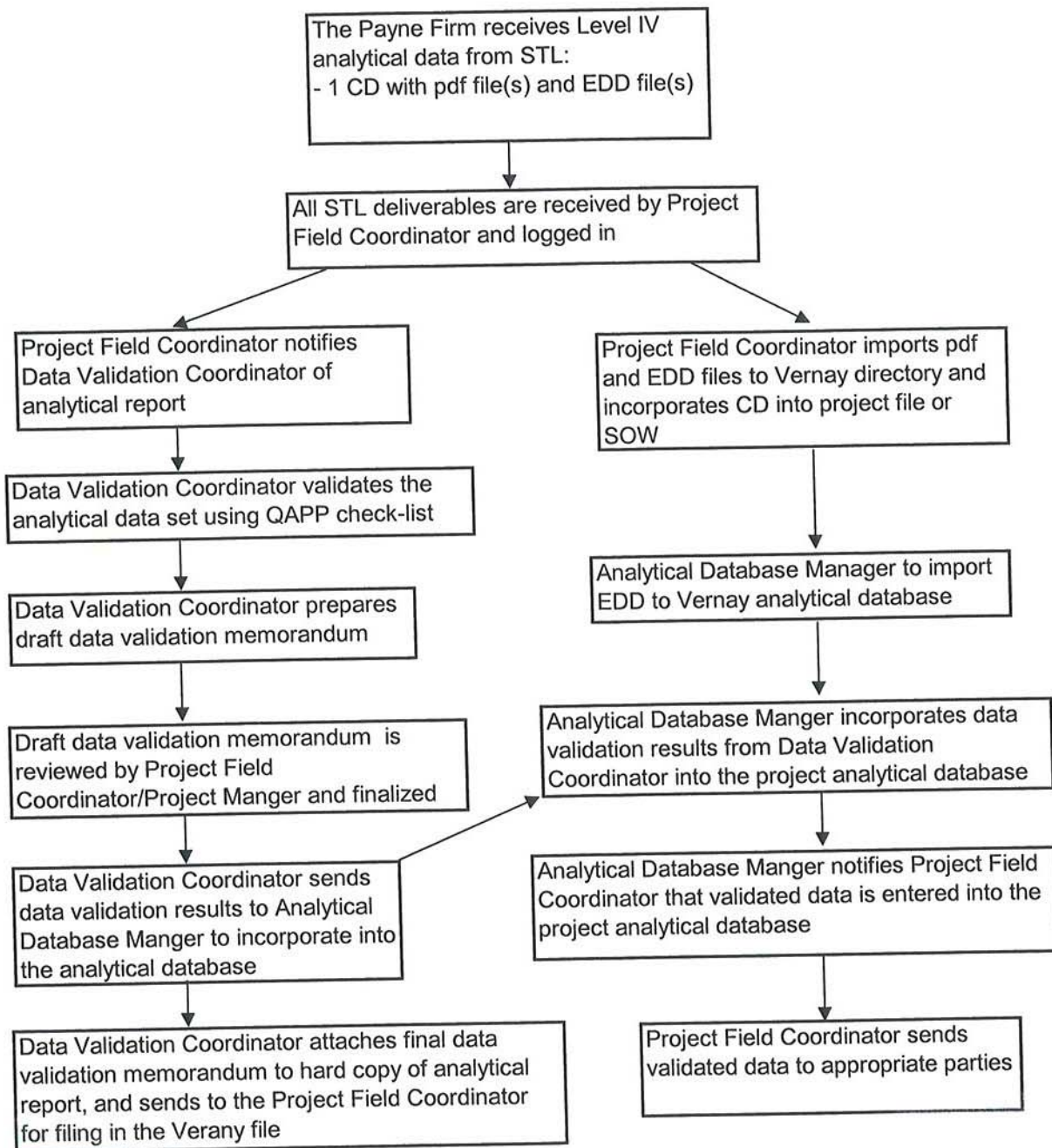
TITLE	
PLANT 3 SOLID WASTE MANAGEMENT UNITS AND AREAS OF CONCERN	
DATE	06/28/04
FIGURE	6
DRAWN BY	MRD
APPROVED BY	ALH
CLIENT	VERNAV LABORATORIES, INC.
PROJECT NO.	0292.11.31
 The Payne Firm, Inc. Environmental Consultants Cincinnati, Ohio 45242	




CLIENT	VERNAV LABORATORIES, INC.		FIGURE	7	DATE	06/28/04
	OUTDOOR FACILITY SOLID WASTE		DRAWN BY	MRD	APPROVED BY	AIH
	MANAGEMENT UNITS AND AREAS OF CONCERN		PROJECT NO.	0292.11.31		



The Payne Firm, Inc.
Environmental Consultants
Cincinnati, Ohio 45242



DRAWN BY	MRD	APPROVED BY	KDK	PROJECT NO.	0292.11.31	DATE	06/28/04	FIGURE	8
CLIENT	VERNAV LABORATORIES, INC.				TITLE				
 The Payne Firm, Inc. Environmental Consultants Cincinnati, Ohio 45242					RCRA FACILITY INVESTIGATION ANALYTICAL DATA HANDLING FLOW CHART				

WEST

EAST

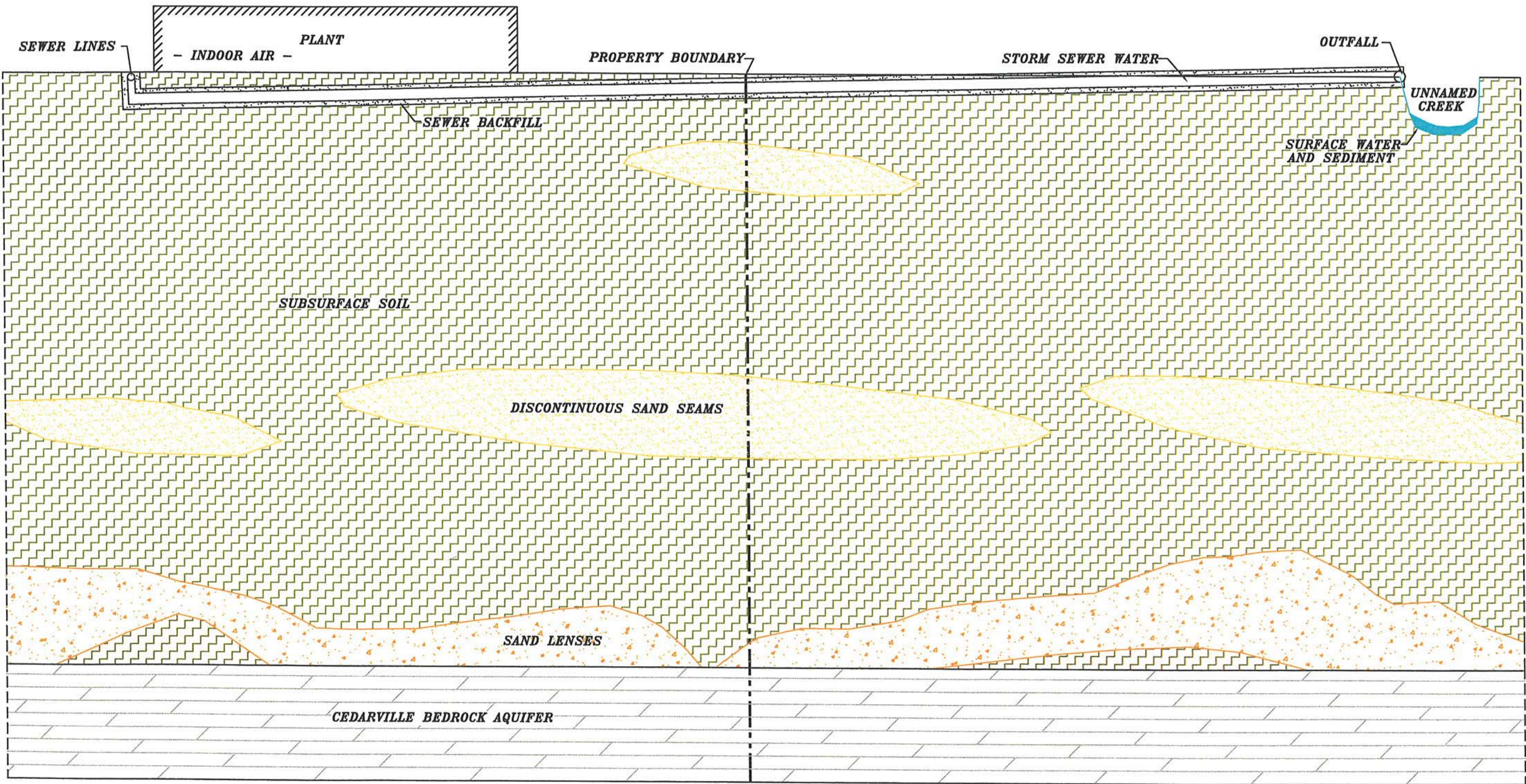


FIGURE NOT TO SCALE

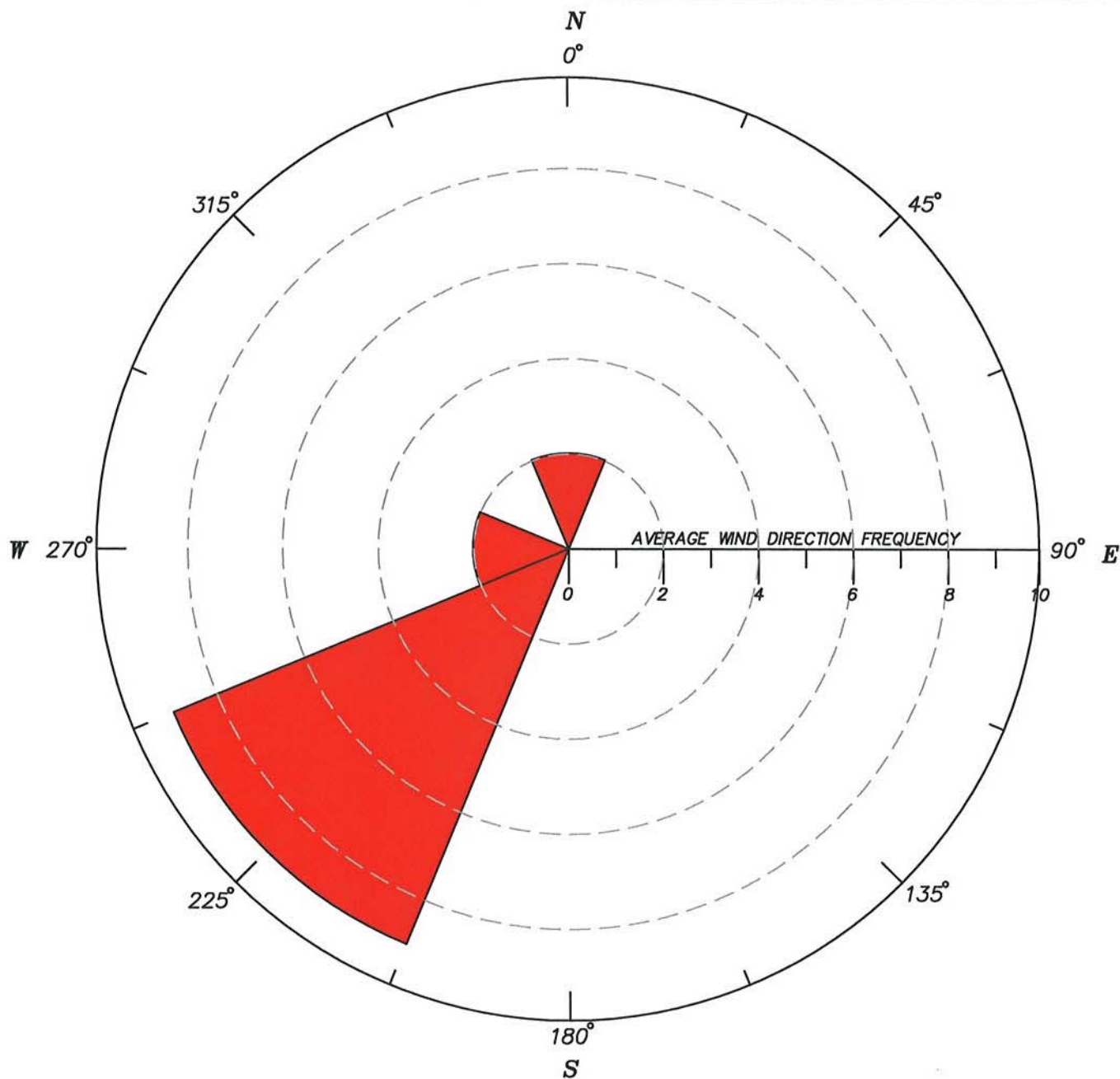
The Payne Firm, Inc.
Environmental Consultants
Cincinnati, Ohio 45242



DATE 06/28/04
APPROVED BY KDK

FIGURE 9
DRAWN BY MRD
PROJECT NO. 0292.11.31


CLIENT VERNAY LABORATORIES, INC.
TITLE SAMPLING MEDIUM

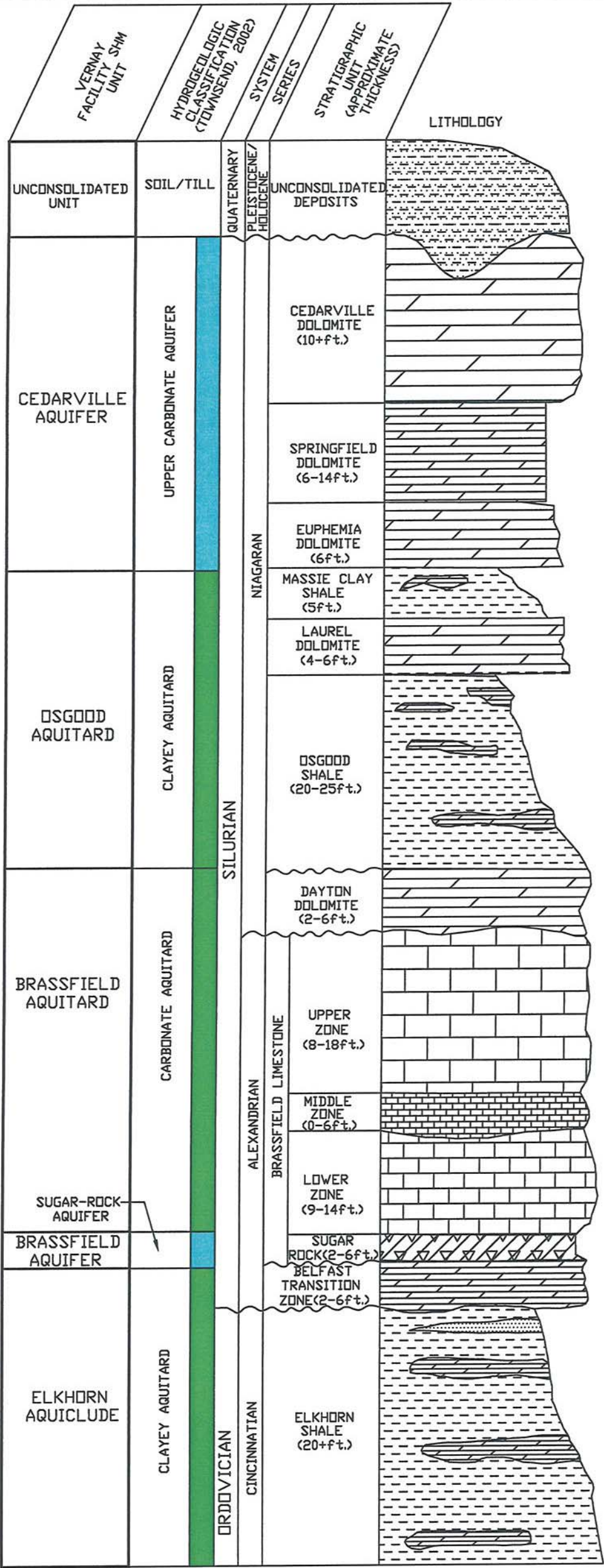


MONTH	JAN.	FEB.	MAR.	APR.	MAY	JUN.	JUL.	AUG.	SEP.	OCT.	NOV.	DEC.	ANNUAL
AVERAGE WIND DIRECTION	W	SW	SW	SW	SW	SW	SW	N	N	SW	SW	W	SW
AVERAGE WIND SPEED	8	7	8	7	5	5	4	4	4	5	7	7	6
MAXIMUM WIND GUST	64	85	76	58	68	69	57	70	57	56	59	56	85

NOTE 1: WINDS ARE GIVEN IN THE DIRECTION THEY ARE BLOWING FROM WITH SPEEDS IN KNOTS.
 FOR EXAMPLE, SW-5 MEANS THE WINDS ARE BLOWING FROM THE SOUTHWEST AT 5 KNOTS.

NOTE 2: DATA FROM THE WRIGHT PATTERSON AIR FORCE BASE - DAYTON, OHIO

DRAWN BY	MRD	APPROVED BY	KDK	PROJECT NO.	0292.11.31	DATE	06/28/04	FIGURE	10
CLIENT	VERNAY LABORATORIES, INC.					TITLE			
 The Payne Firm, Inc. Environmental Consultants Cincinnati, Ohio 45242						MONTHLY AVERAGE WIND ROSE DIAGRAM			



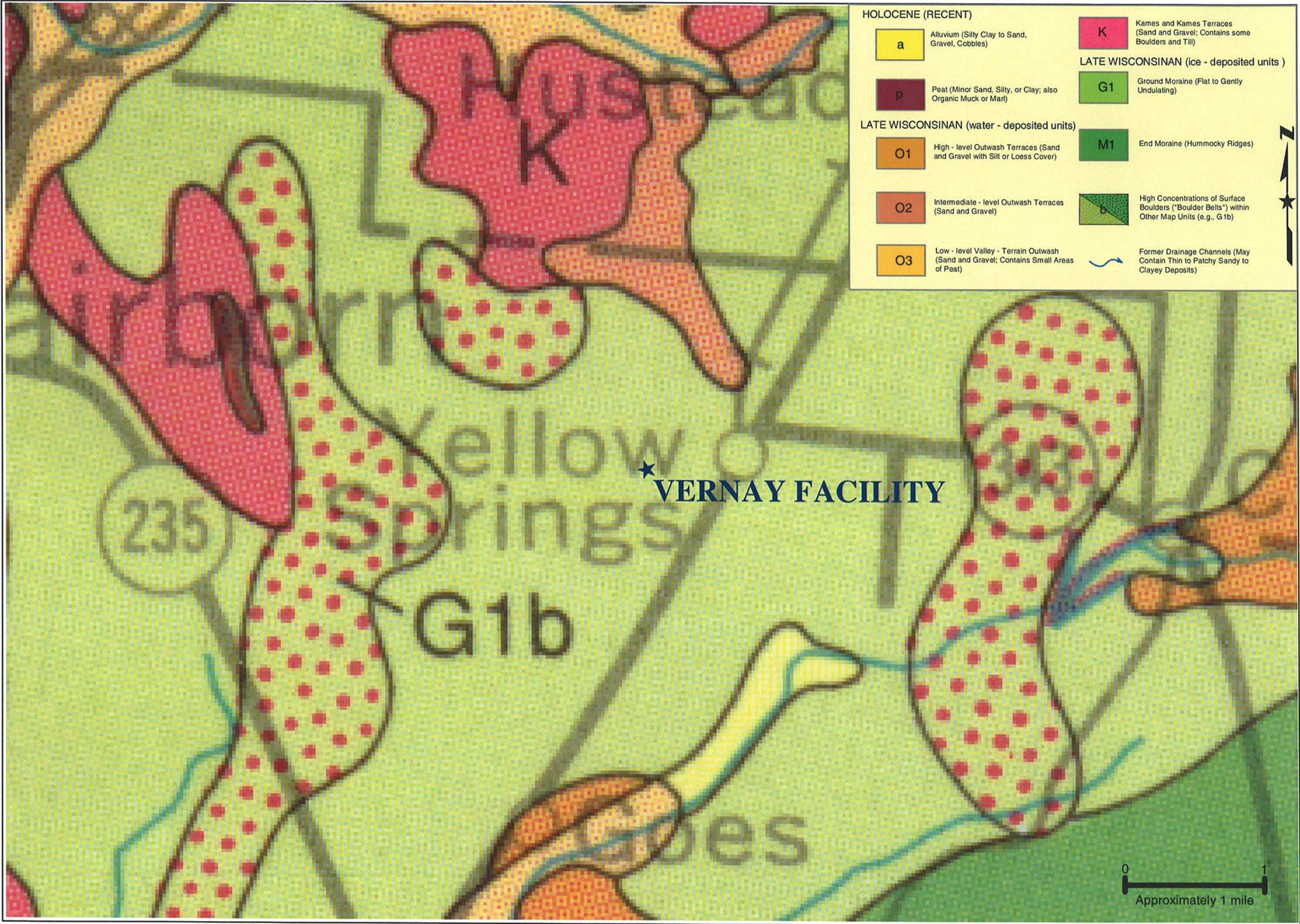
GEOLOGIC COLUMN FROM OUTCROP DESCRIPTION (MODIFIED FROM FROST, 1977)
HYDROGEOLOGIC CLASSIFICATION FROM ANTIOCH COLLEGE BORING (TOWNSEND, 2002)

LEGEND

	UNCONSOLIDATED DEPOSITS		SUCROSIC DOLOMITE ROCK		AQUIFER
	DOLOMITE ROCK		SILTSTONE		AQUITARD/AQUICLUDE
	SHALE		UNCONFORMITY		
	LIMESTONE		GRADATIONAL CONTACT		

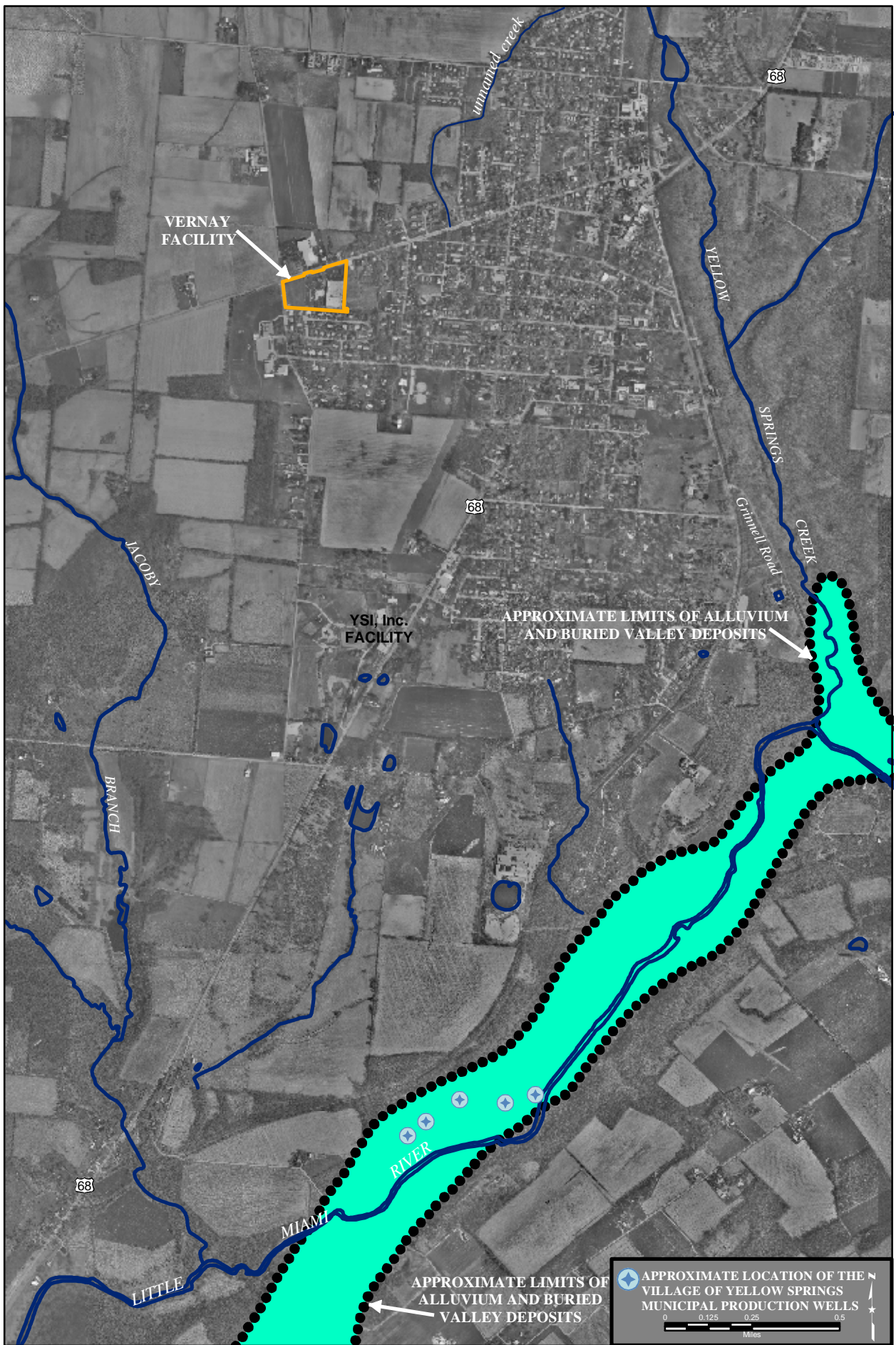
FIGURE NOT TO SCALE

SITE	VERNAY LABORATORIES, INC.	FIGURE	11	DATE	06/28/04		The Payne Firm, Inc. Environmental Consultants Cincinnati, Ohio 45242
TITLE	SITE HYDROGEOLOGIC MODEL (SHM)	DRAWN BY	MRD	APPROVED BY	KDK		
		PROJECT NO.	0292.11.31				




CLIENT	VERNAY LABORATORIES, INC.			FIGURE NO.	12	DATE	11/22/02	
	TITLE	QUATERNARY GEOLOGY OF THE YELLOW SPRINGS AREA			DRAWN BY	JAW	APPROVED BY	KDK
					PROJECT NO.			292.11.31
REFERENCE	Modified from the 1999 Quaternary Geology of Ohio; Ohio DNR Division of Geological Survey Map No.2							

The Payne Firm, Inc.
Environmental Consultants
Cincinnati, Ohio



F:\Data\VPF-MGT\Wemay\GIS\GWTM Figures\WellheadProtectionArea.mxd

CLIENT	VERNAY LABORATORIES, INC.	FIGURE	13	DATE	6/29/04	 The Payne Firm, Inc. Environmental Consultants Cincinnati, Ohio
TITLE	BURIED VALLEY AQUIFER AND VILLAGE OF YELLOW SPRINGS WELL FIELD	DRAWN BY	JAW	APPROVED BY	KDK	
		PROJECT NO.	292.11.31			
REFERENCE	Greene Co. Auditors, Orthophotograph (1998); Village of Yellow Springs 2001 Wellhead Protection Management Plan; Ground Water Resources of Greene Co., Ohio DNR Division of Water					

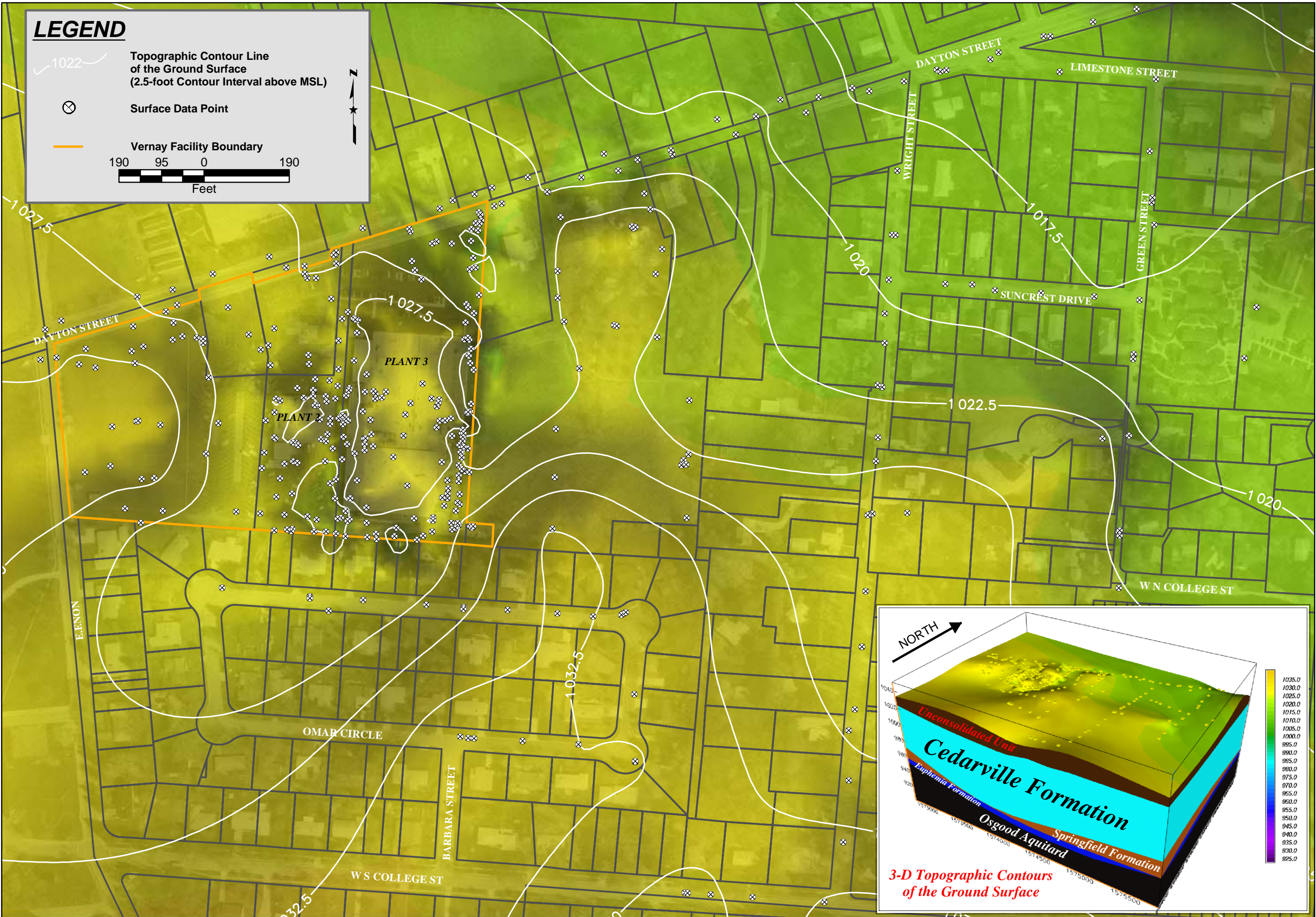


F:\Data\PF-MGT\Vernay\GIS\GWTM Figures\Regional Topo.mxd


CLIENT	VERNAY LABORATORIES, INC.	FIGURE	14	DATE	6/29/04
TITLE	REGIONAL SURFACE TOPOGRAPHY OF THE YELLOW SPRINGS AREA	DRAWN BY	ALH	APPROVED BY	KDK
REFERENCE	Modified from 1975 Topographic Map of the Yellow Springs, Ohio, 7.5-Minute Quadrangle: United States Geological Survey				
		PROJECT NO.	292.11.31		

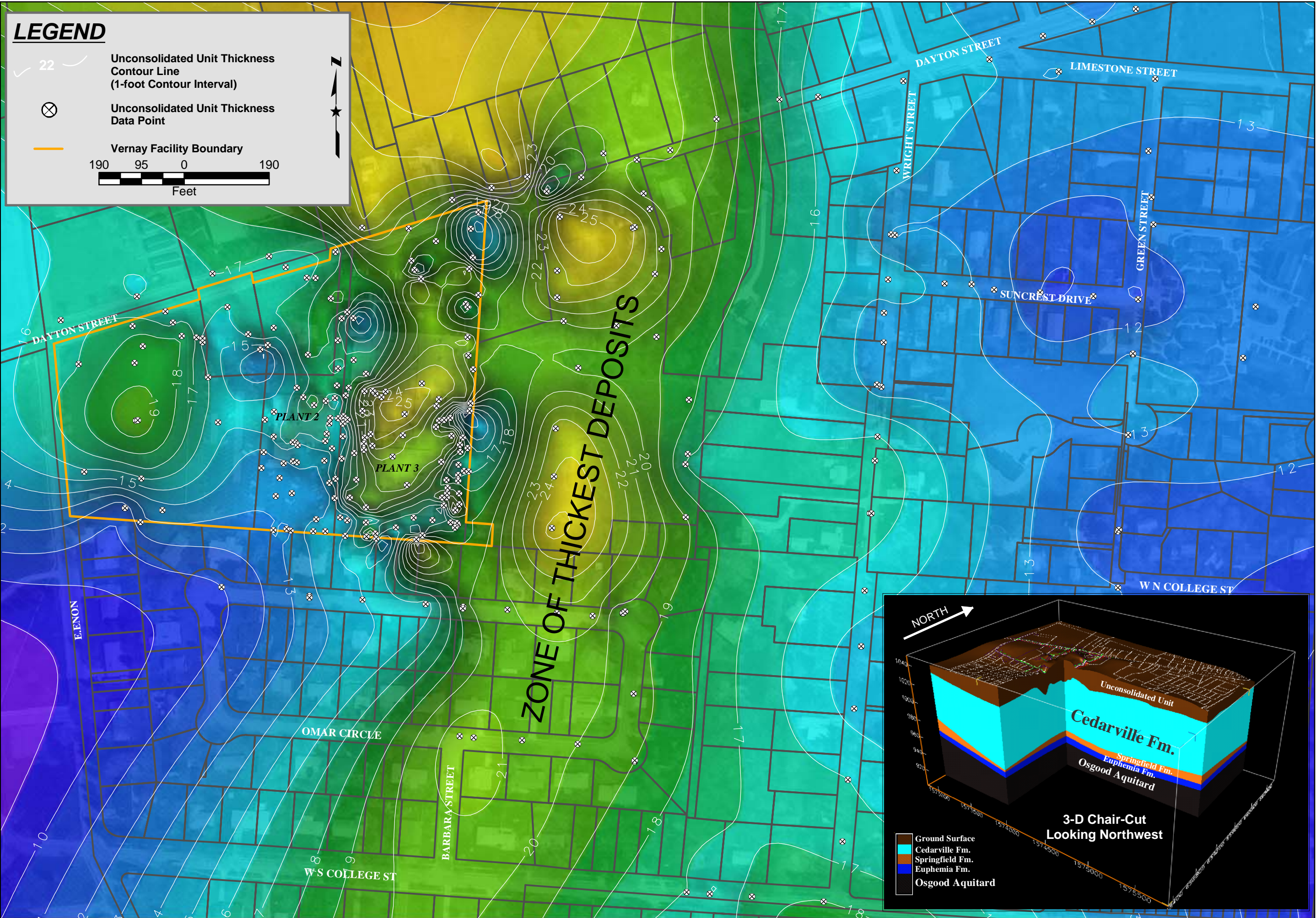


The Payne Firm, Inc.
Environmental Consultants
Cincinnati, Ohio



F:\Data\PF\H\MGT\Verway\GIS\Contours\2004-Q2\UUT\Topo_Q2-2004.mxd


CLIENT	VERNAY LABORATORIES, INC.			 The Payne Firm, Inc. Environmental Consultants Cincinnati, Ohio	
TITLE	SURFACE TOPOGRAPHY AT THE FACILITY AND VICINITY				
FIGURE NO.	15	DATE	6/29/04		
DRAWN BY	ALH	APPROVED BY	KDK		
PROJECT NO.	292.11.31				
REFERENCE	Greene County Auditors, Orthophotograph (1998); State Plane Coordinates from Woolpert Surveying, LLP, Dayton, Ohio (NAD83/NAVD88)				




CLIENT	VERNAY LABORATORIES, INC.		FIGURE NO.	16	DATE	6/29/04
TITLE	THICKNESS CONTOURS OF THE UNCONSOLIDATED UNIT		DRAWN BY	ALH	APPROVED BY	KDK
			PROJECT NO.	292.11.31		
REFERENCE	Greene County Auditors, Orthophotograph (1998); State Plane Coordinates from Woolpert Surveying, LLP, Dayton, Ohio (NAD83/NAVD88)					

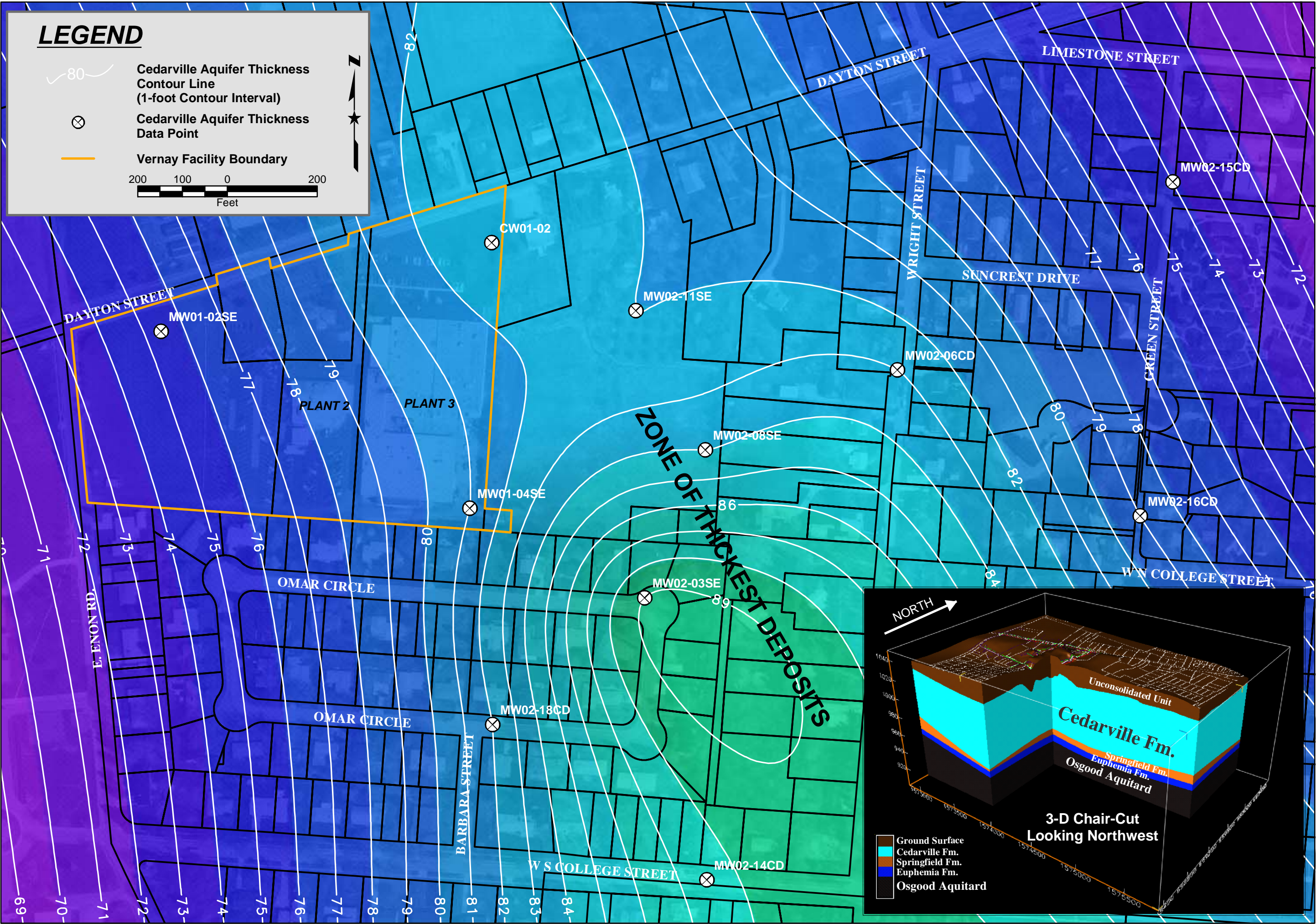


F:\Data\PFI-MGT\Vernay\GIS\GWTM Figures\3_5 Regional BT Topo.mxd

CLIENT VERNAY LABORATORIES, INC.	FIGURE 17	DATE 6/29/04	 The Payne Firm, Inc. Environmental Consultants Cincinnati, Ohio
TITLE REGIONAL BEDROCK TOPOGRAPHY OF THE YELLOW SPRINGS AREA	DRAWN BY ALH	APPROVED BY KDK	
REFERENCE Modified from 2001 Bedrock Topography of the Yellow Springs, Ohio, 7.5-Minute Quadrangle: Ohio DNR Division of Geological Survey Open-File Map BT-B4G8	PROJECT NO. 292.11.31		



CLIENT	VERNAY LABORATORIES, INC.		FIGURE NO.	18	DATE	6/29/04
TITLE	CEDARVILLE FORMATION BEDROCK TOPOGRAPHIC CONTOURS		DRAWN BY	ALH	APPROVED BY	KDK
			PROJECT NO.	292.11.31		
						
		The Payne Firm, Inc. Environmental Consultants Cincinnati, Ohio				
REFERENCE: Greene County Auditors, Orthophotograph (1998); State Plane Coordinates from Woolpert Surveying, LLP, Dayton, Ohio (NAD83/NAVD88)						



CLIENT	VERNAY LABORATORIES, INC.		FIGURE NO.	19	DATE	6/29/04
TITLE	THICKNESS CONTOURS OF THE CEDARVILLE AQUIFER		DRAWN BY	ALH	APPROVED BY	KDK
			PROJECT NO.	292.11.31		
REFERENCE	Greene County Auditors, Orthophotograph (1998); State Plane Coordinates from Woolpert Surveying, LLP, Dayton, Ohio (NAD83/NAVD88)					