


DRAWN BY <i>ALH</i>	APPROVED BY <i>KDK</i>	PROJECT NO. <i>292.11.39</i>	DATE <i>12/20/04</i>	FIGURE <i>1</i>
CLIENT <i>VERNAY LABORATORIES, INC.</i>			TITLE <i>FACILITY LOCATION</i>	
 The Payne Firm, Inc. Environmental Consultants Cincinnati, Ohio				
REFERENCE <i>Greene County Auditors, Digital Data: City, Township, and County Boundaries</i>				




LEGEND

- Storm Sewer
- Storm Sewer Manhole Cover
- Storm Sewer Catch Basin
- Sanitary Sewer
- Sanitary Sewer Manhole Cover
- Sanitary Sewer Sedimentation Structure


90 45 0 90
Feet

N

CLIENT	VERNAY LABORATORIES, INC.		FIGURE NO.	2	DATE	12/20/04	
TITLE	FACILITY FEATURES		DRAWN BY	ALH	APPROVED BY	KDK	
			PROJECT NO.				292.11.39
							
			The Payne Firm, Inc. Environmental Consultants Cincinnati, Ohio				
REFERENCE Greene County Auditors, Orthophotograph (2003); State Plane Coordinates from Woolpert Surveying, LLP, Dayton, Ohio (NAD83/NAVD88)							



CLIENT	VERNAV LABORATORIES, INC.		FIGURE NO.	3	DATE	10/22/04
TITLE	SURFACE TOPOGRAPHY AT THE FACILITY AND VICINITY		DRAWN BY	ALH	APPROVED BY	KDK
			PROJECT NO.		292.11.39	
REFERENCE Greene County Auditors, Orthophotograph (2003); State Plane Coordinates from Woolpert Surveying, LLP, Dayton, Ohio (NAD83/NAVD88)						

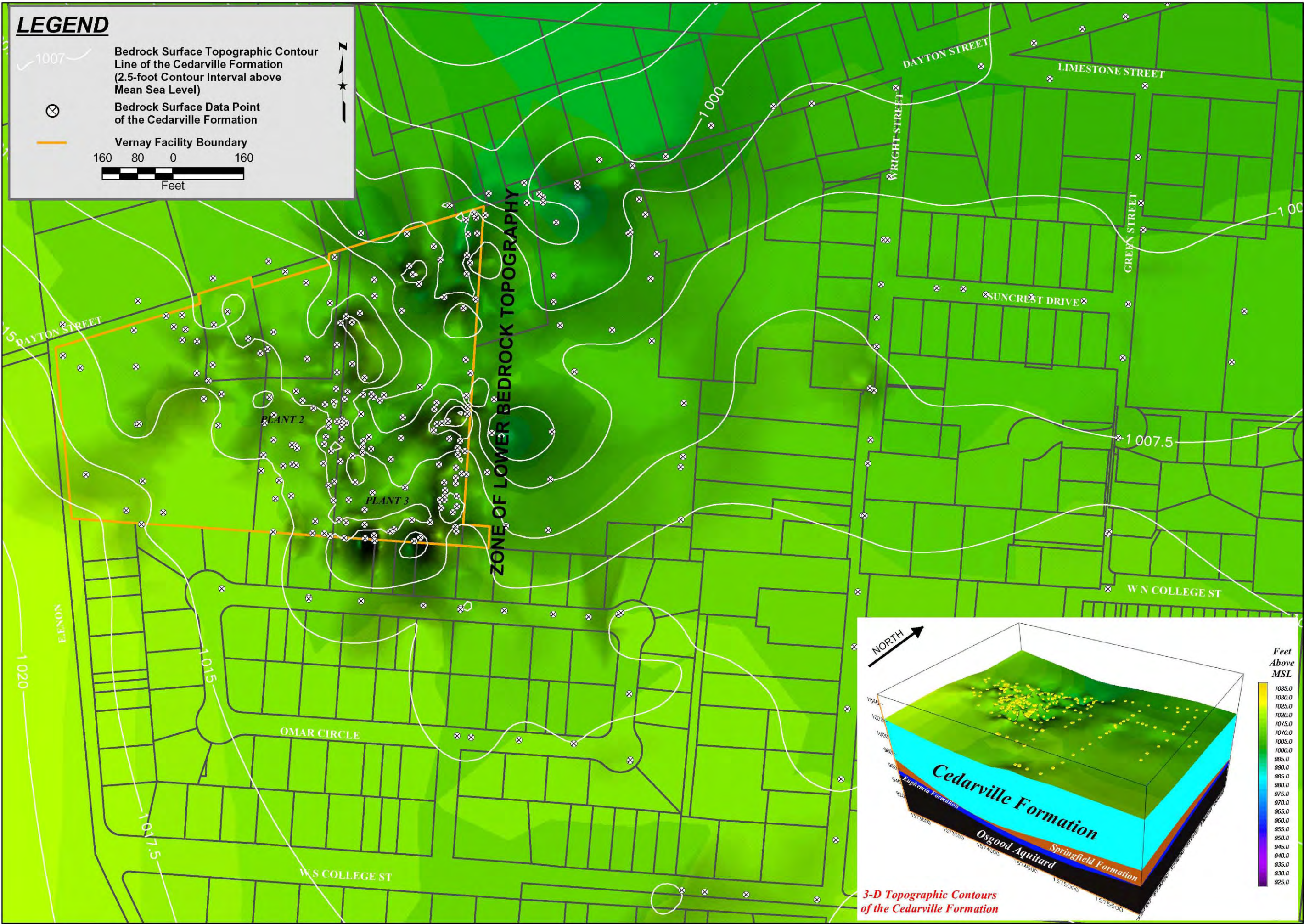


The Payne Firm, Inc.


Environmental Consultants
Cincinnati, Ohio




The Payne Firm, Inc.
Environmental Consultants
Cincinnati, Ohio




LEGEND



Bedrock Surface Topographic Contour
Line of the Cedarville Formation
(2.5-foot Contour Interval above
Mean Sea Level)

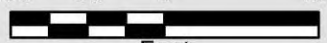


Bedrock Surface Data Point
of the Cedarville Formation




Vernay Facility Boundary


160800160



Feet



CLIENT	VERNAY LABORATORIES, INC.			FIGURE NO.	5	DATE	10/22/04
TITLE	CEDARVILLE FORMATION BEDROCK TOPOGRAPHIC CONTOURS			DRAWN BY	ALH	APPROVED BY	KDK
				PROJECT NO.	292.11.39		
REFERENCE	Greene County Auditors, Orthophotograph (2003); State Plane Coordinates from Woolpert Surveying, LLP, Dayton, Ohio (NAD83/NAVD88)						



The Payne Firm, Inc.

Environmental Consultants

Cincinnati, Ohio

