

# REMEDICATION

## A Green Infrastructure Plan for the University of Cincinnati's East Campus

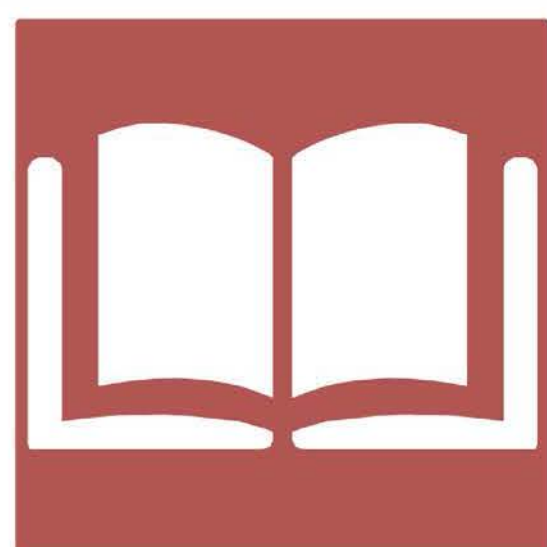
### GUIDING THEMES



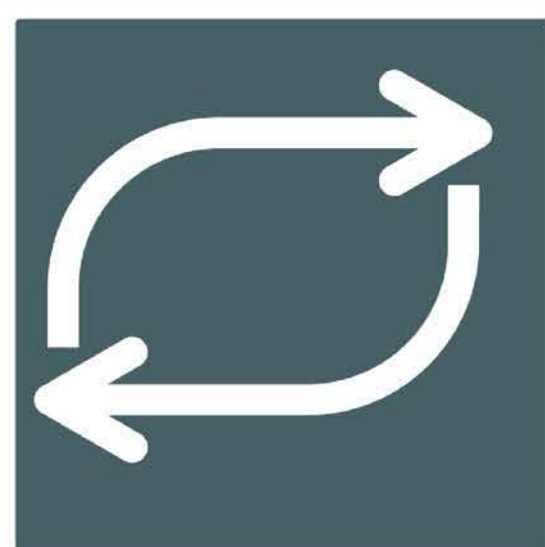
**ENVIRONMENTAL HEALTH**



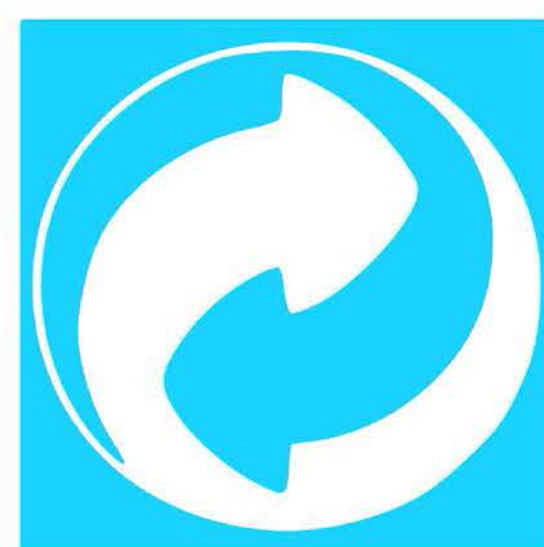
**HEALTH & HEALING**



**EDUCATION**



**COMMUNITY CONNECTIONS**



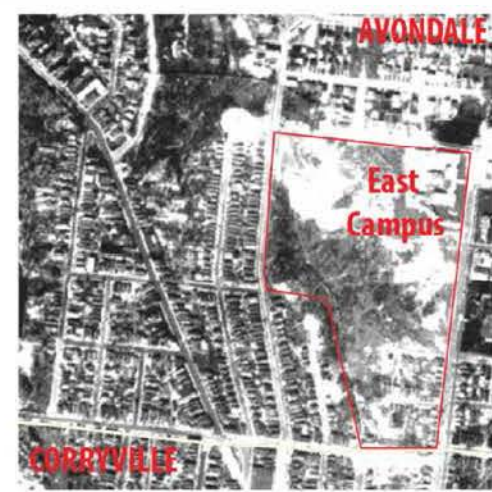
**LONG-TERM SUSTAINABILITY**

ReMEDiation is a green infrastructure plan to mitigate stormwater management for the University of Cincinnati's East Campus. The plan addresses stormwater management needs while simultaneously fostering community connections, education, health and healing, and long-term sustainability.

### CONCEPTUAL DIAGRAMS



### CAMPUS HISTORICAL CONTEXT



**EARLY 1900s**  
24 buildings were built in Avondale to accommodate the College of Medicine.



**1950s**  
The University acquired portions of Avondale through Urban Renewal.

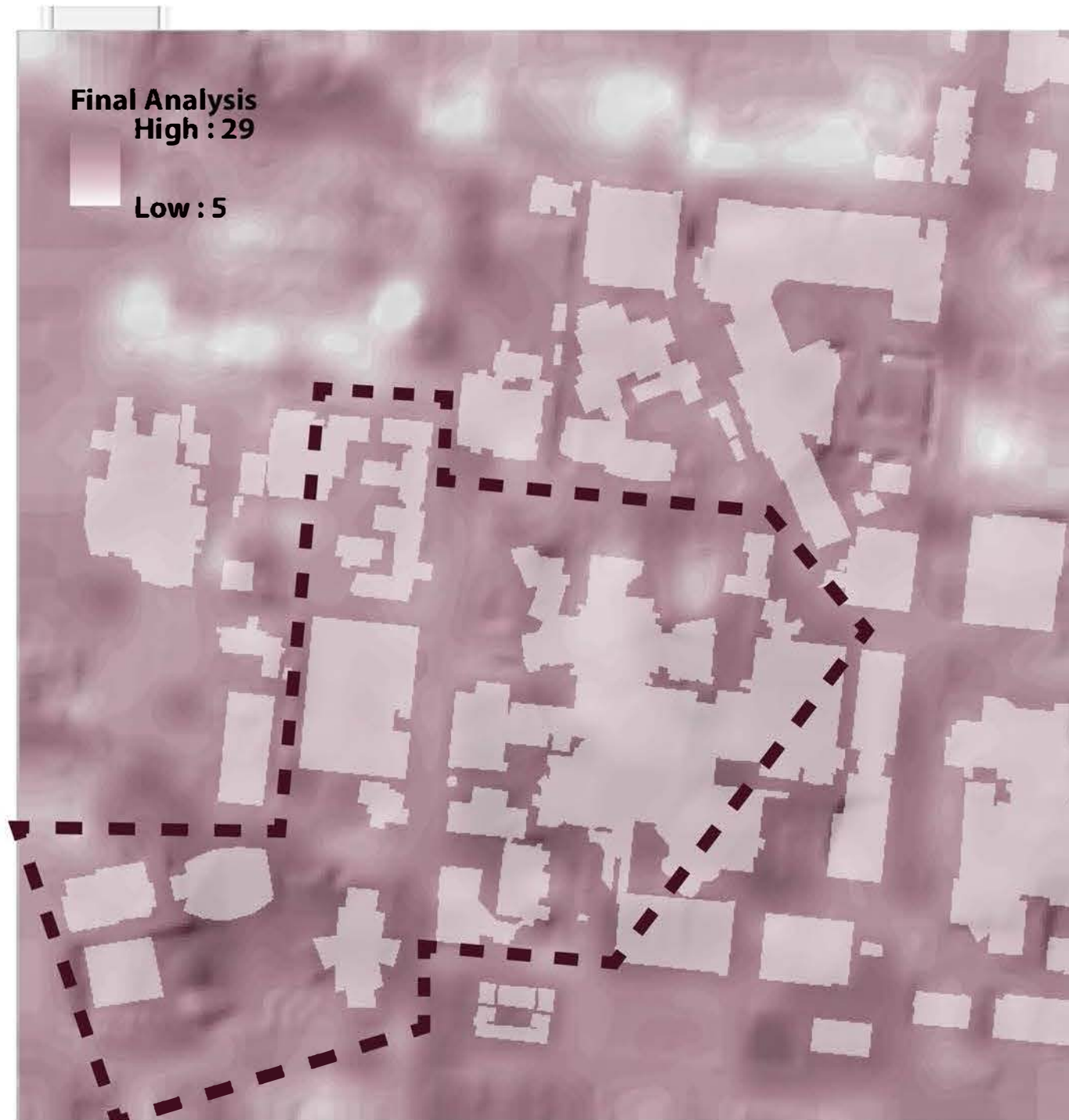


**2016**  
Today, the highly urbanized East Campus consists of 30 buildings and occupies 57 acres.

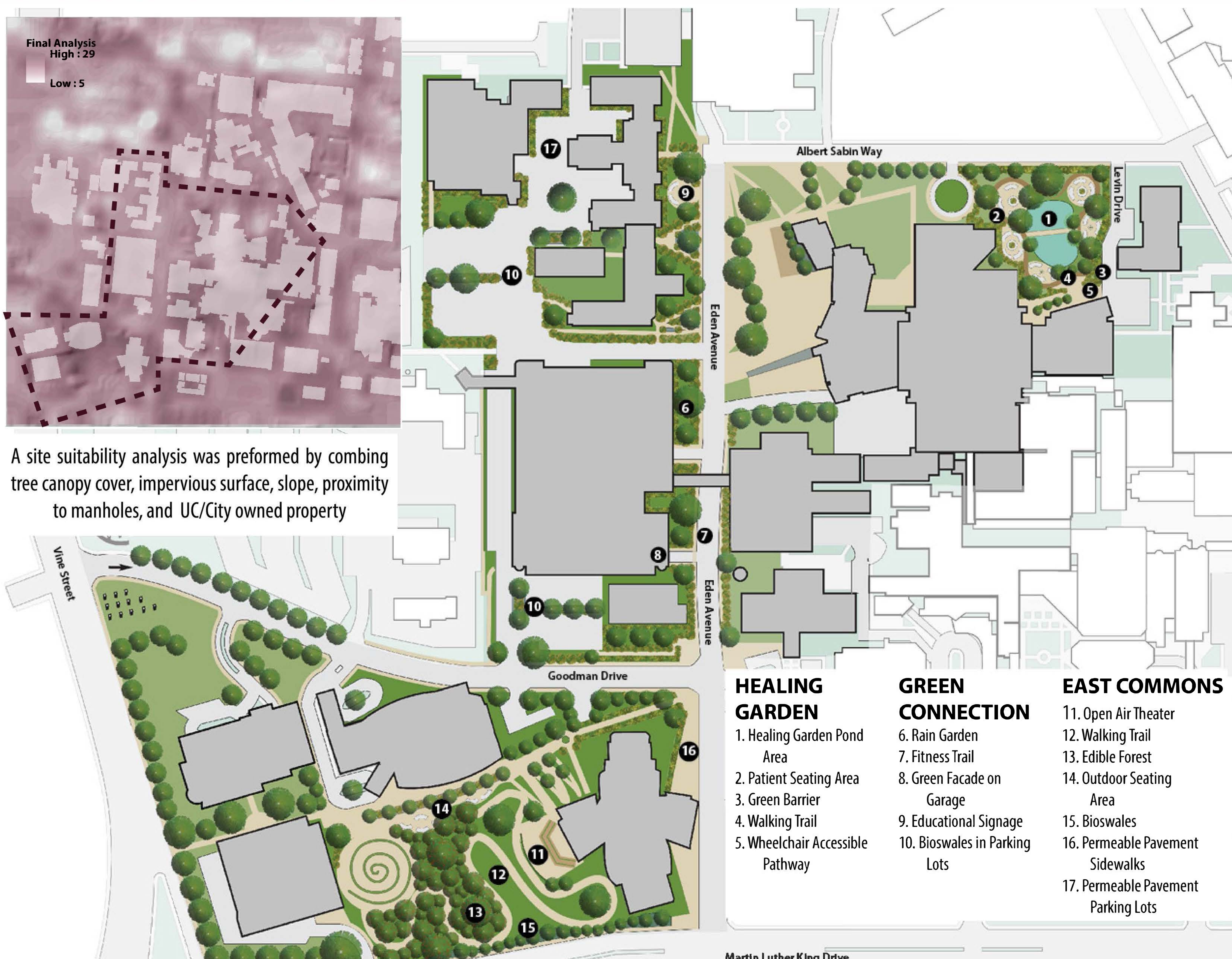
East Campus has experienced tremendous changes over the past century, including a failed urban renewal project. Rebuilding connection between the University of Cincinnati and Avondale is paramount.

Source: UC Urban Database

### SITE PLAN & SUITABILITY ANALYSIS



A site suitability analysis was performed by combining tree canopy cover, impervious surface, slope, proximity to manholes, and UC/City owned property



#### HEALING GARDEN

1. Healing Garden Pond Area
2. Patient Seating Area
3. Green Barrier
4. Walking Trail
5. Wheelchair Accessible Pathway

#### GREEN CONNECTION

6. Rain Garden
7. Fitness Trail
8. Green Facade on Garage
9. Educational Signage
10. Bioswales in Parking Lots

#### EAST COMMONS

11. Open Air Theater
12. Walking Trail
13. Edible Forest
14. Outdoor Seating Area
15. Bioswales
16. Permeable Pavement Sidewalks
17. Permeable Pavement Parking Lots