

Grasse River Superfund Site



Upland Construction Start Public Meeting

May 9, 2017
6:00 PM

Massena Town Hall
Massena, NY

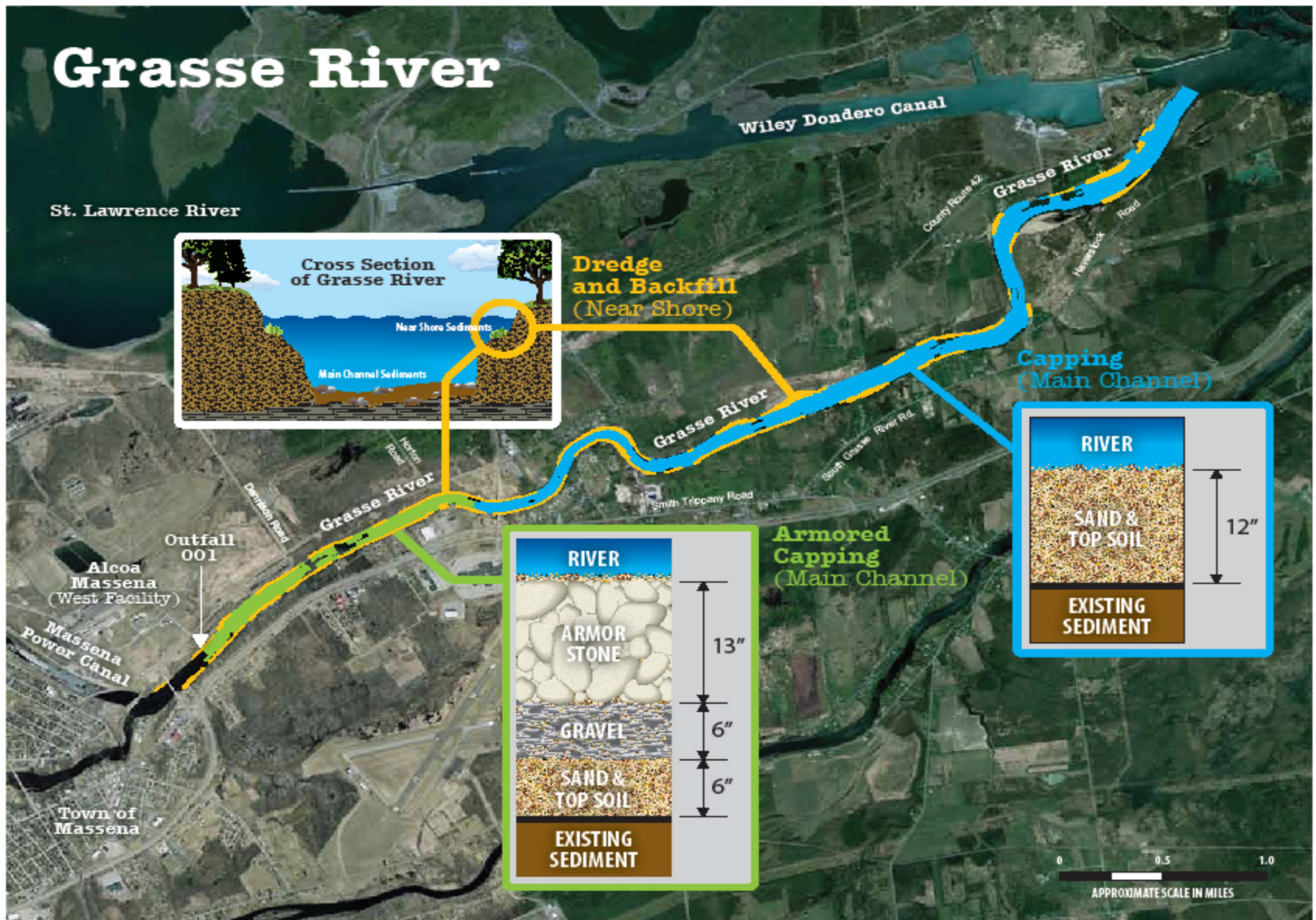
www.epa.gov/region02/superfund/npl/aluminumcompany/



Agenda

- Introduction
- Selected Remedy
- Activities Since the ROD
- Construction 2017: Staging Area
- Questions and Answers

Selected Remedy





Selected Remedy

- Dredge near shore sediment, followed by backfill to grade (approx. 109,000 cubic yards)
- Place main channel armored cap over upper 2 mile of main channel sediments
- Place main channel cap over the lower 5 mile of the river sediment
- Dewater dredged sediment and dispose in the on-site permitted landfill
- Reconstruct habitat impacted by remedial action
- Long-term monitoring and maintenance