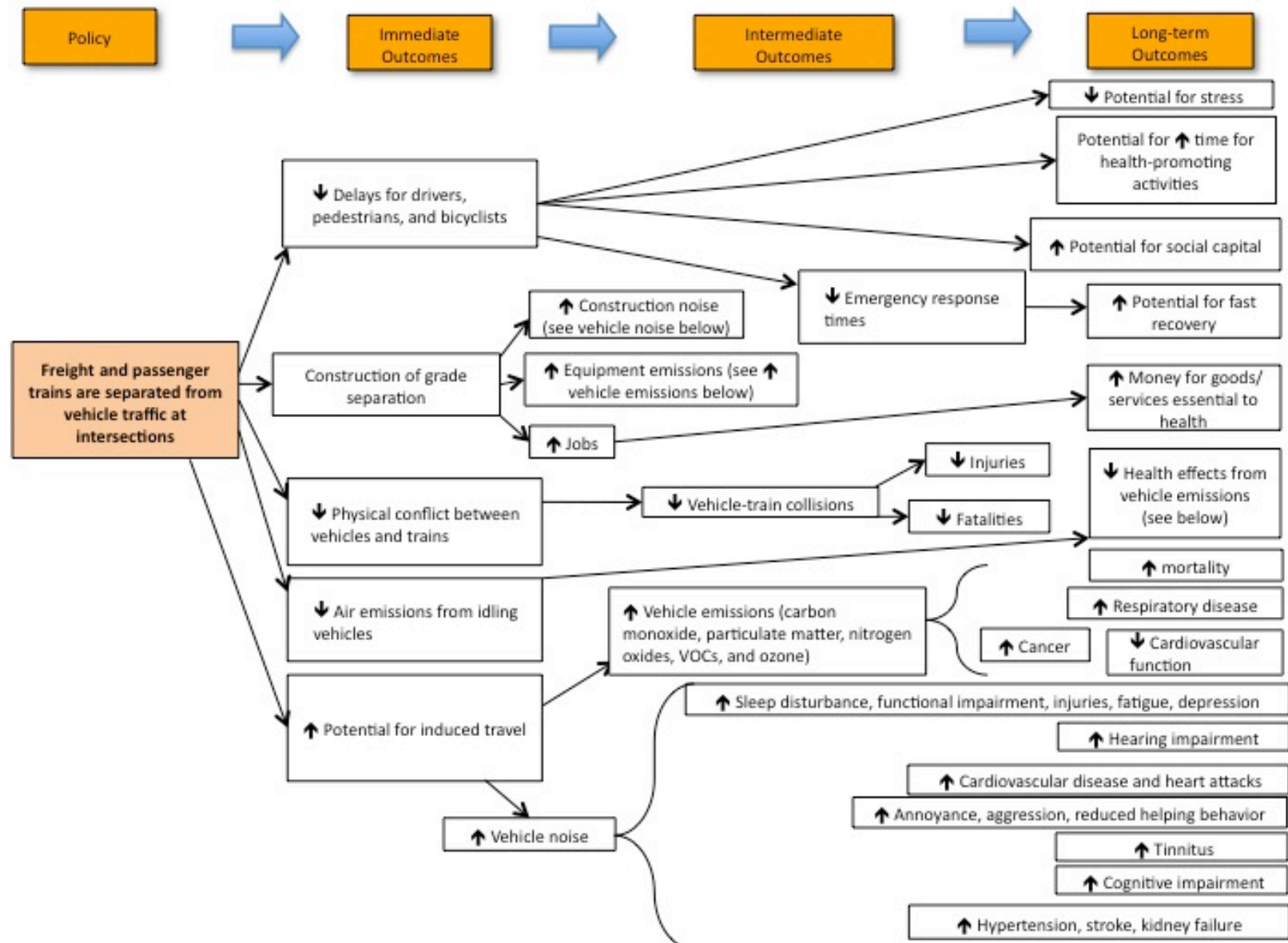
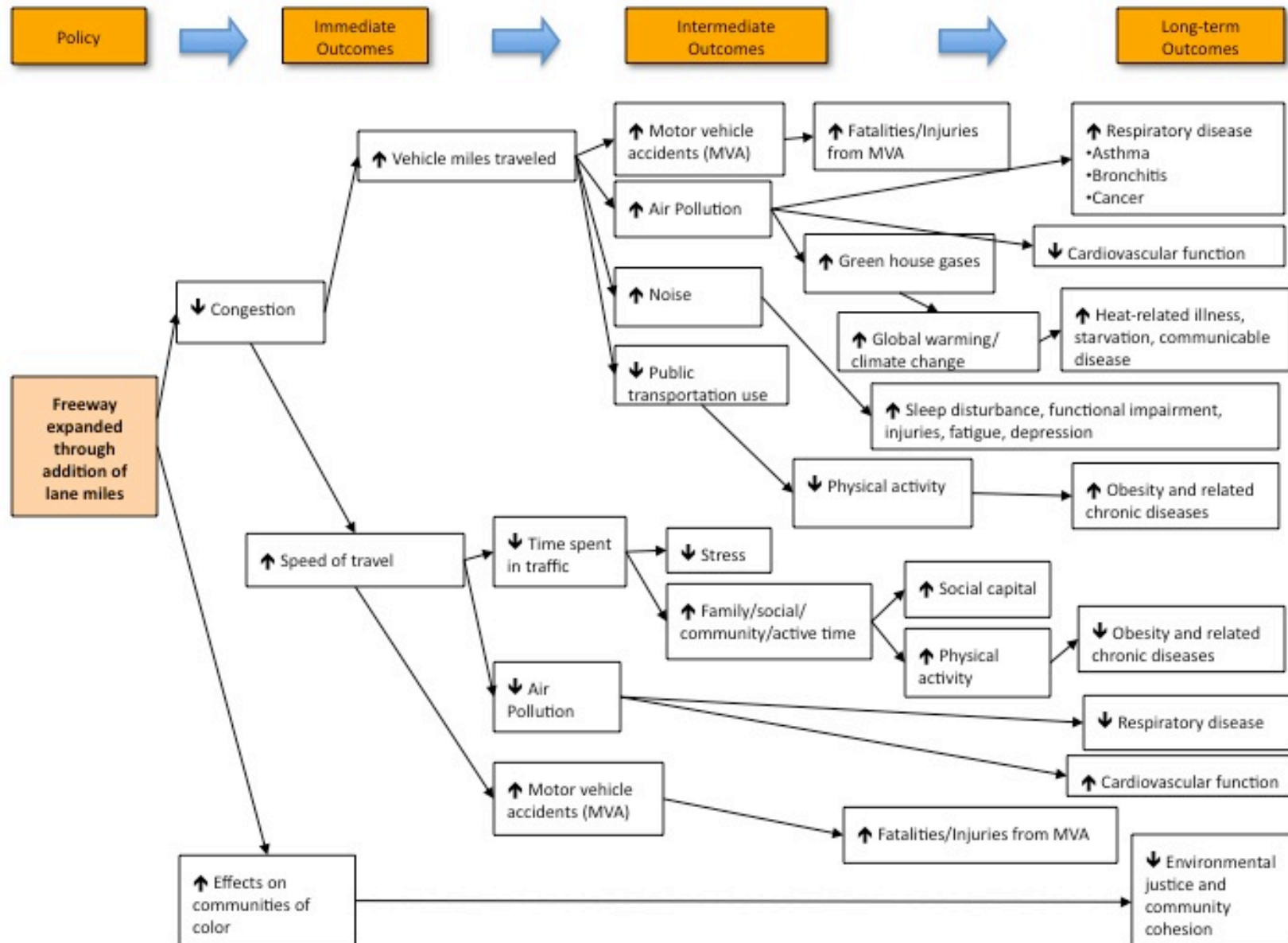


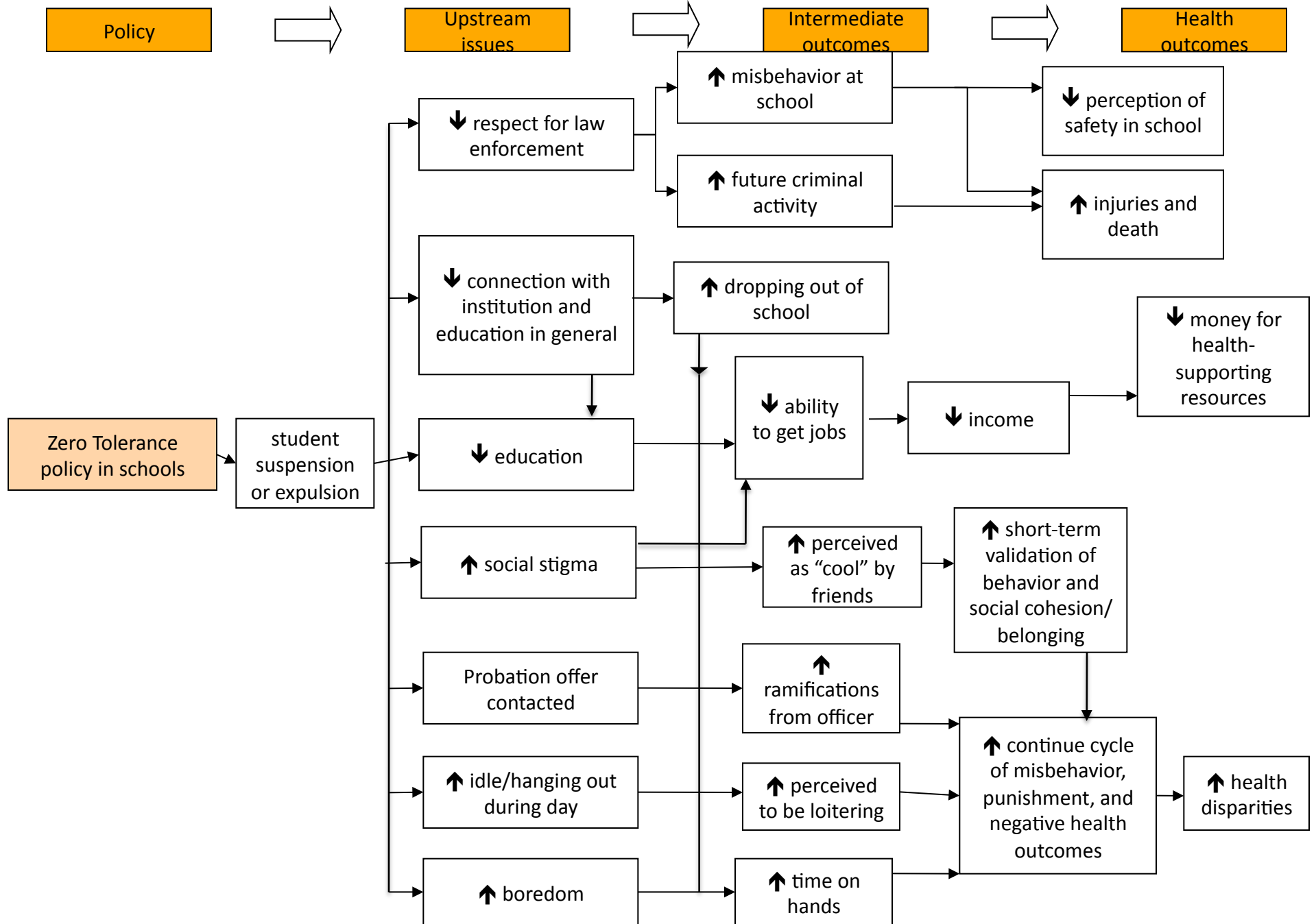
Pathway diagram showing links between roadway/rail grade separations and health.



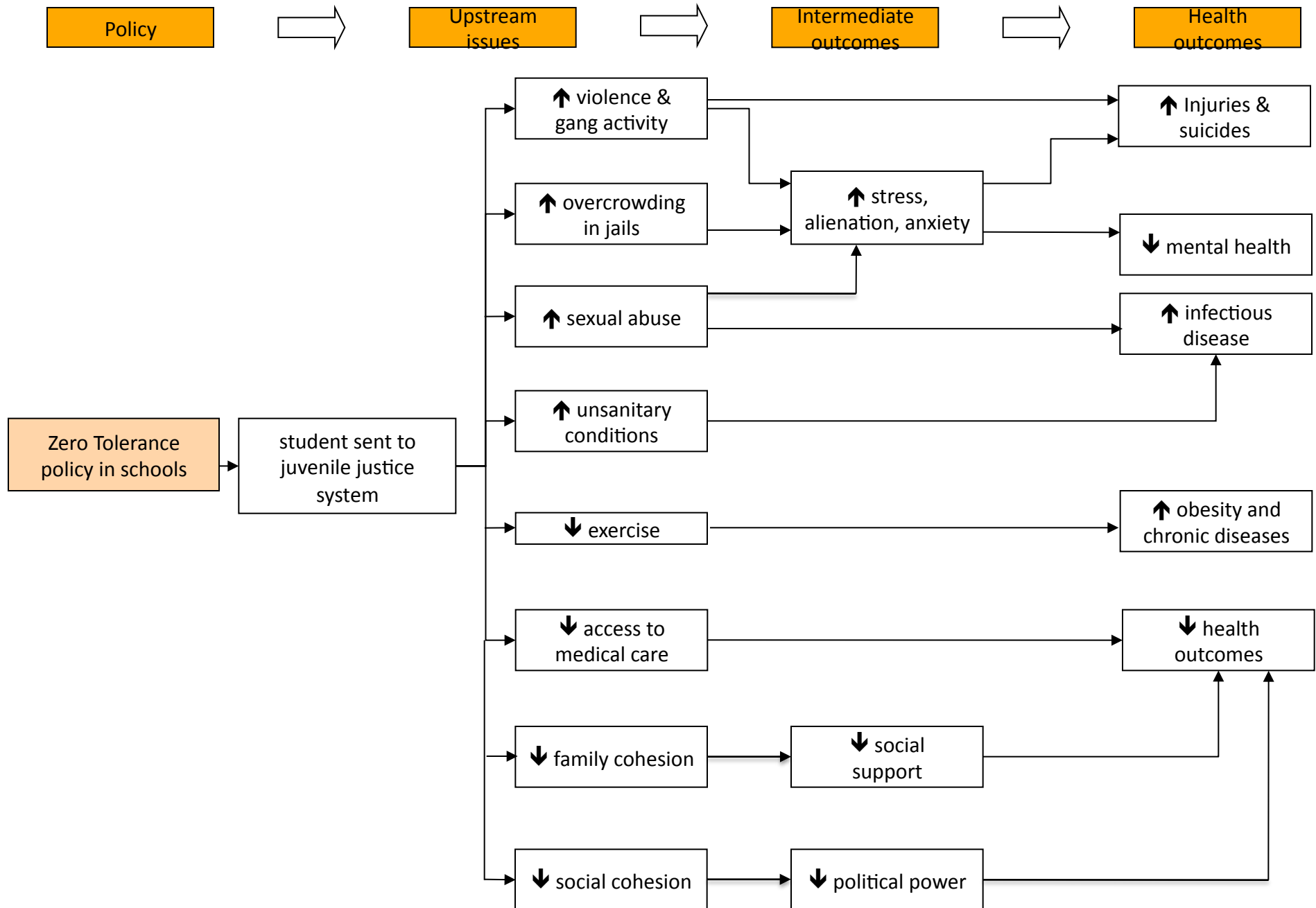
Pathway diagram showing links between freeway expansions and health.



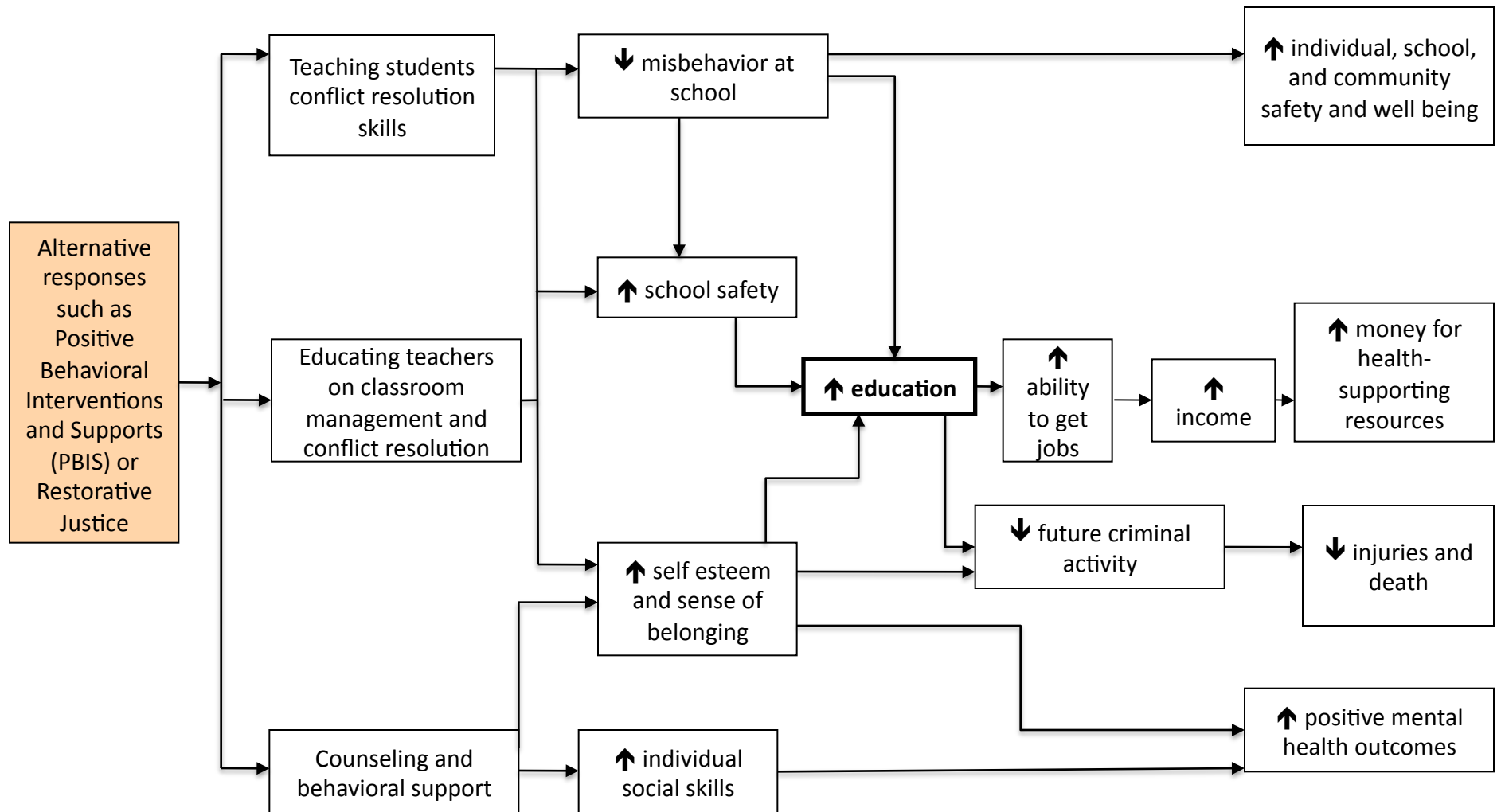
Pathway diagram showing links between zero tolerance discipline policy in schools and health.



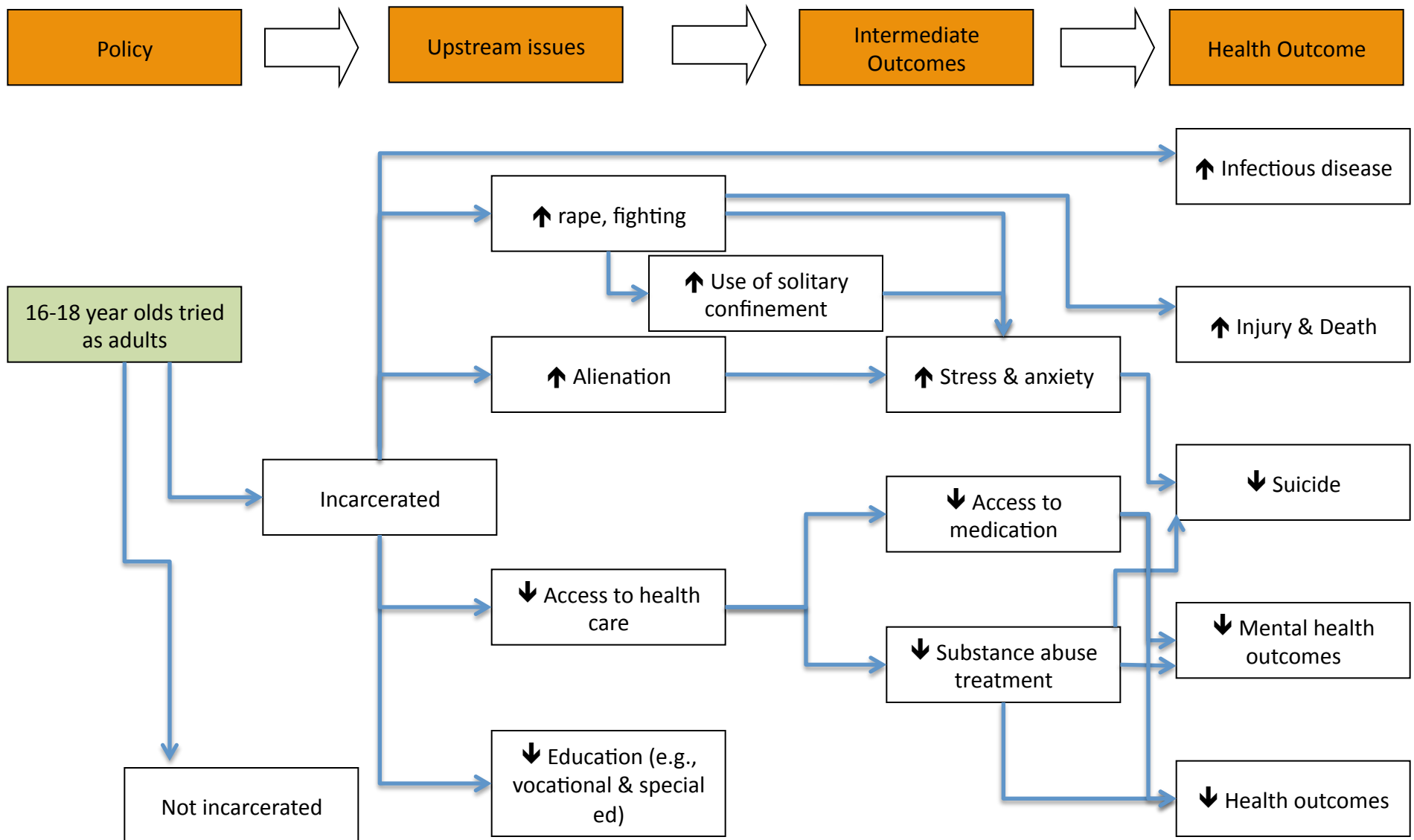
Pathway diagram showing links between zero tolerance discipline policy in schools and health.



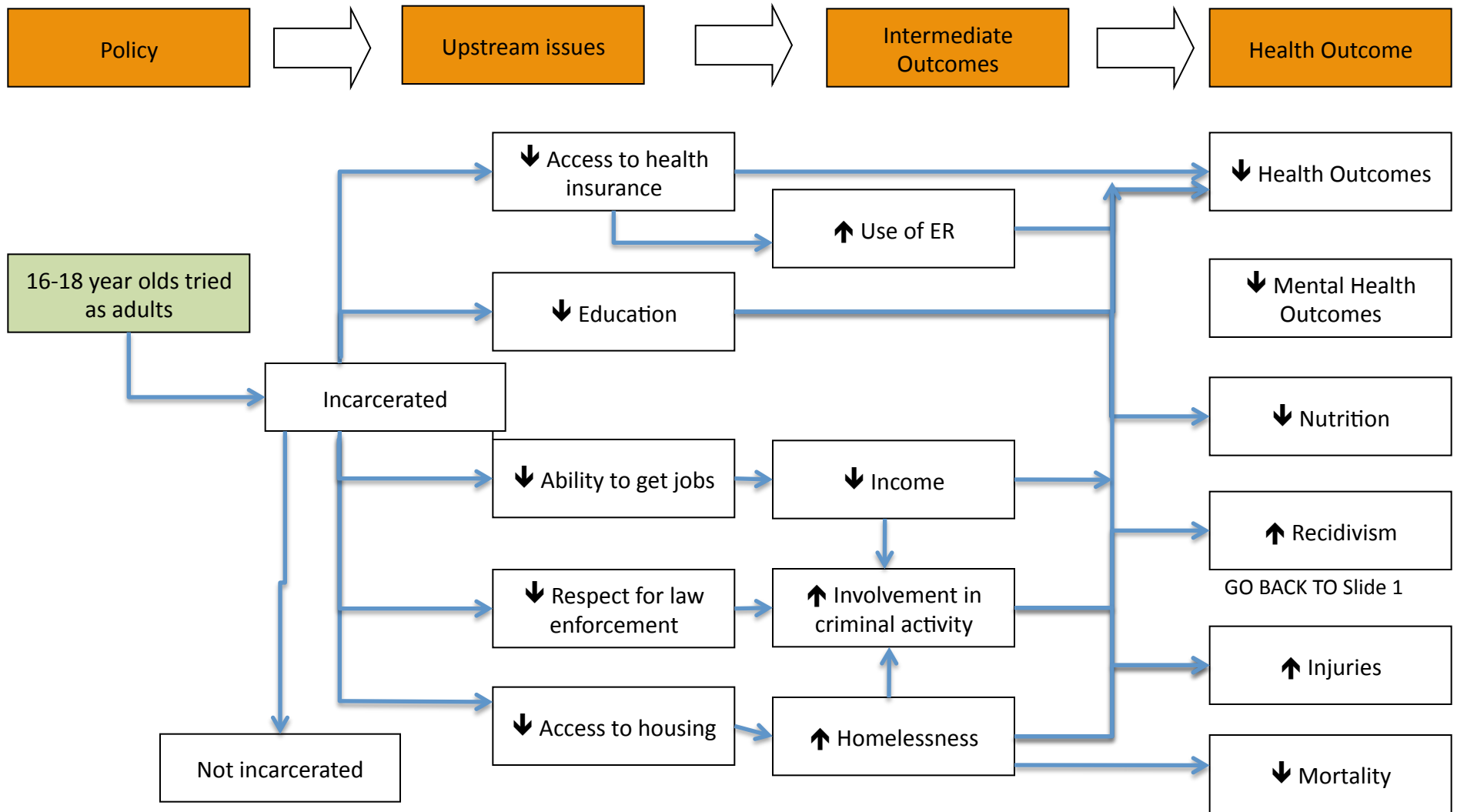
Pathway diagram showing links between alternative discipline policies in schools and health.



In-prison health impacts of incarcerating youth as adults

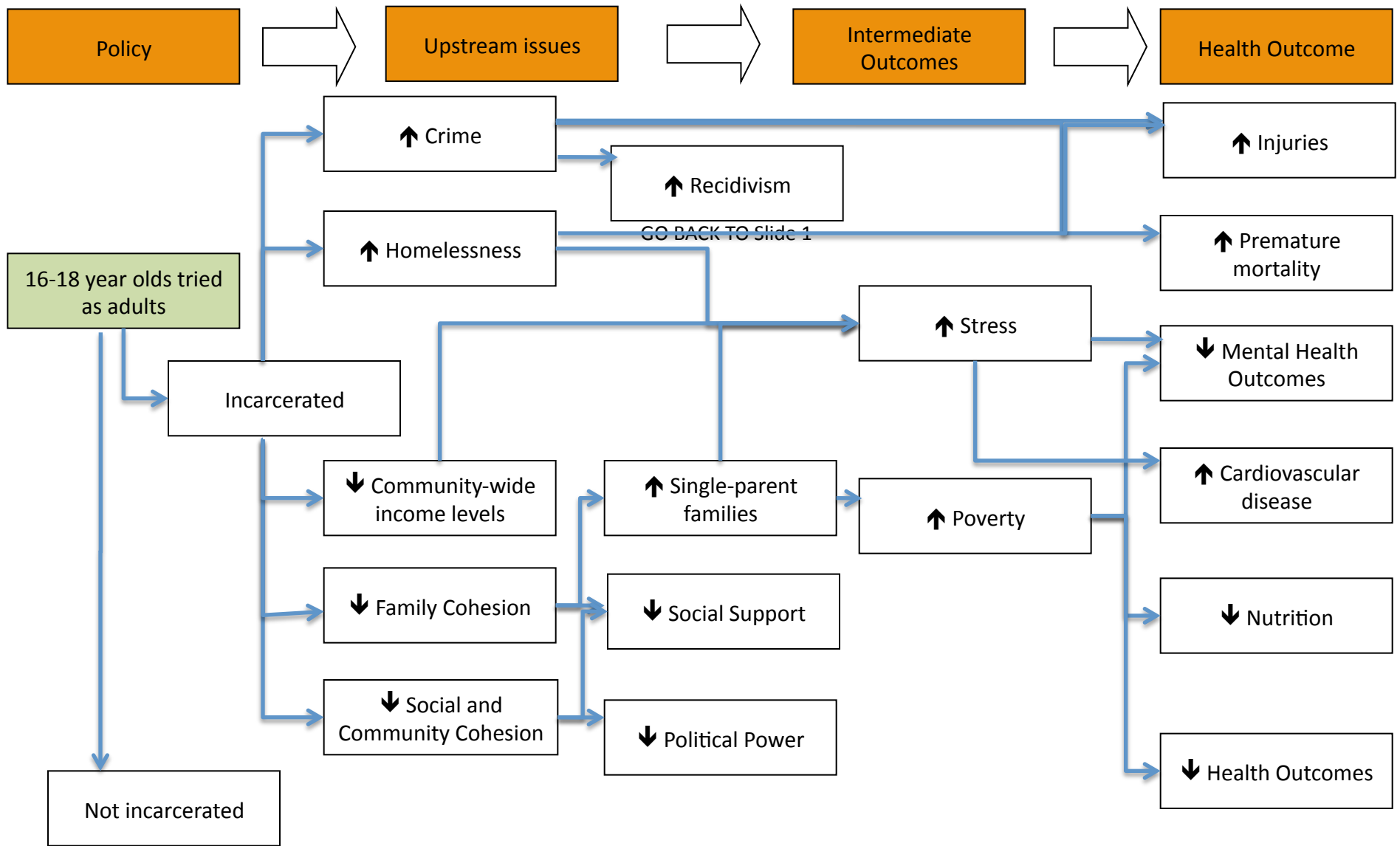


Re-entry health impacts of incarcerating youth as adults

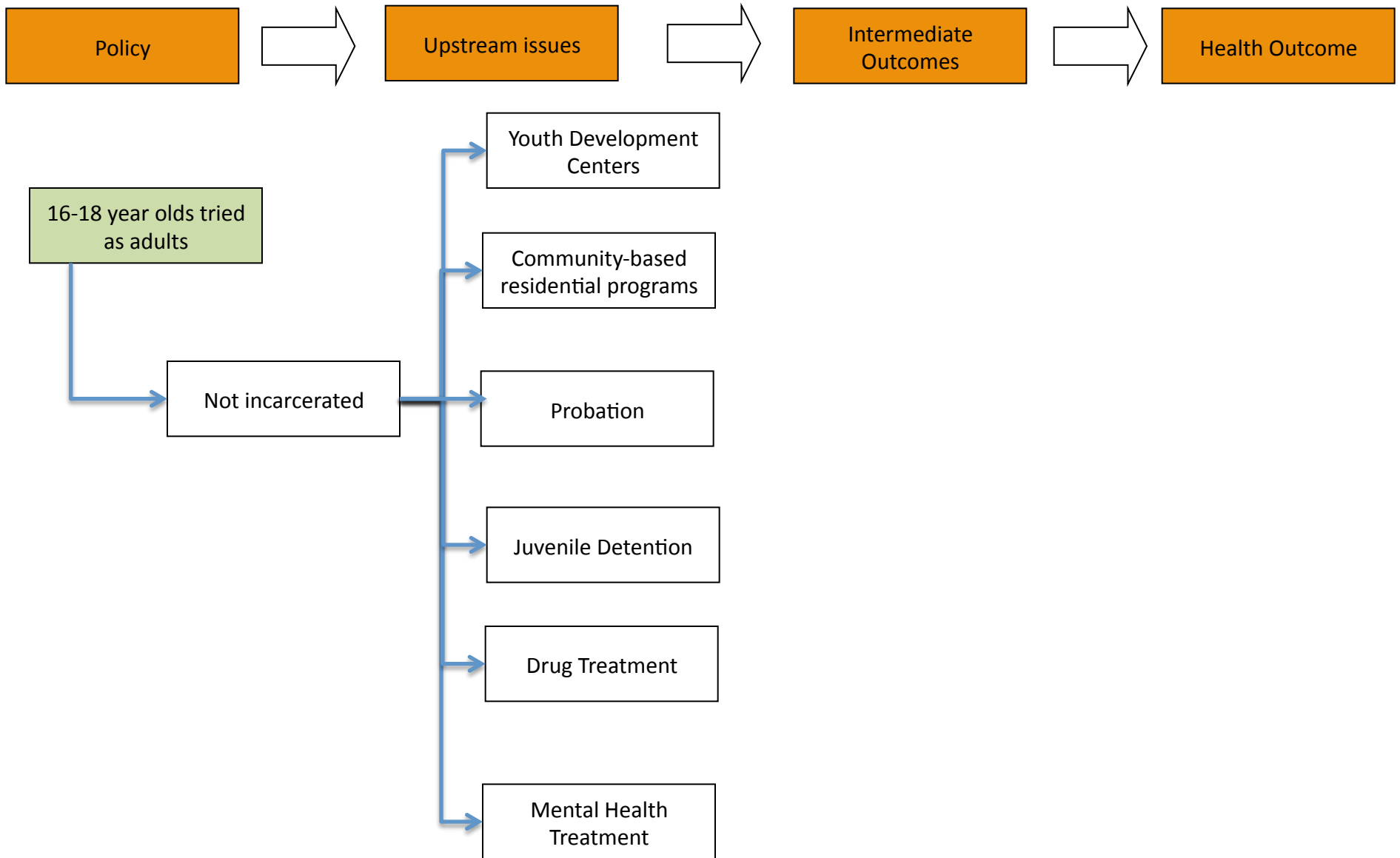


See slide 4

Community health impacts of incarcerating youth as adults

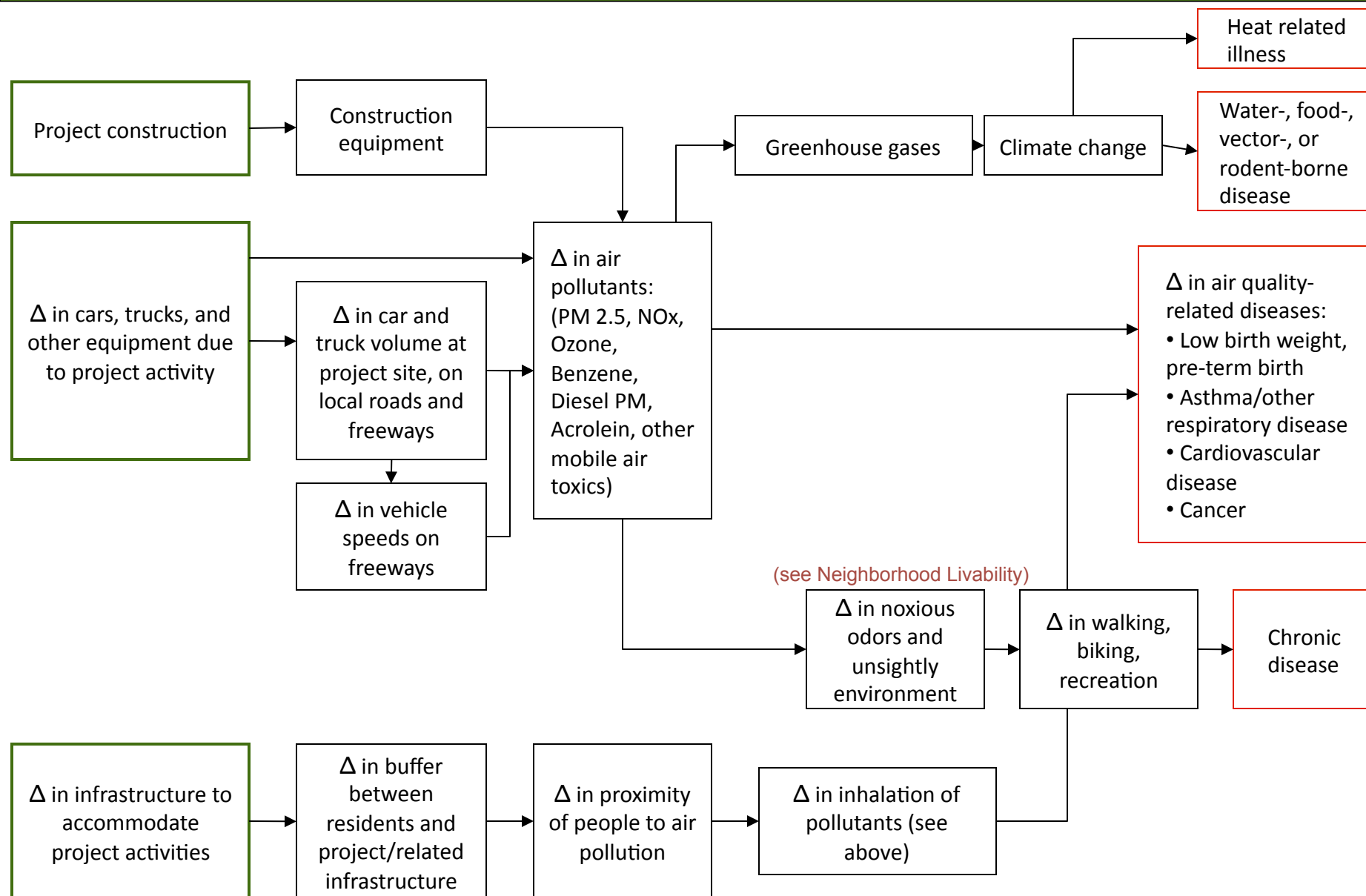


Health impacts if youth are tried but not incarcerated

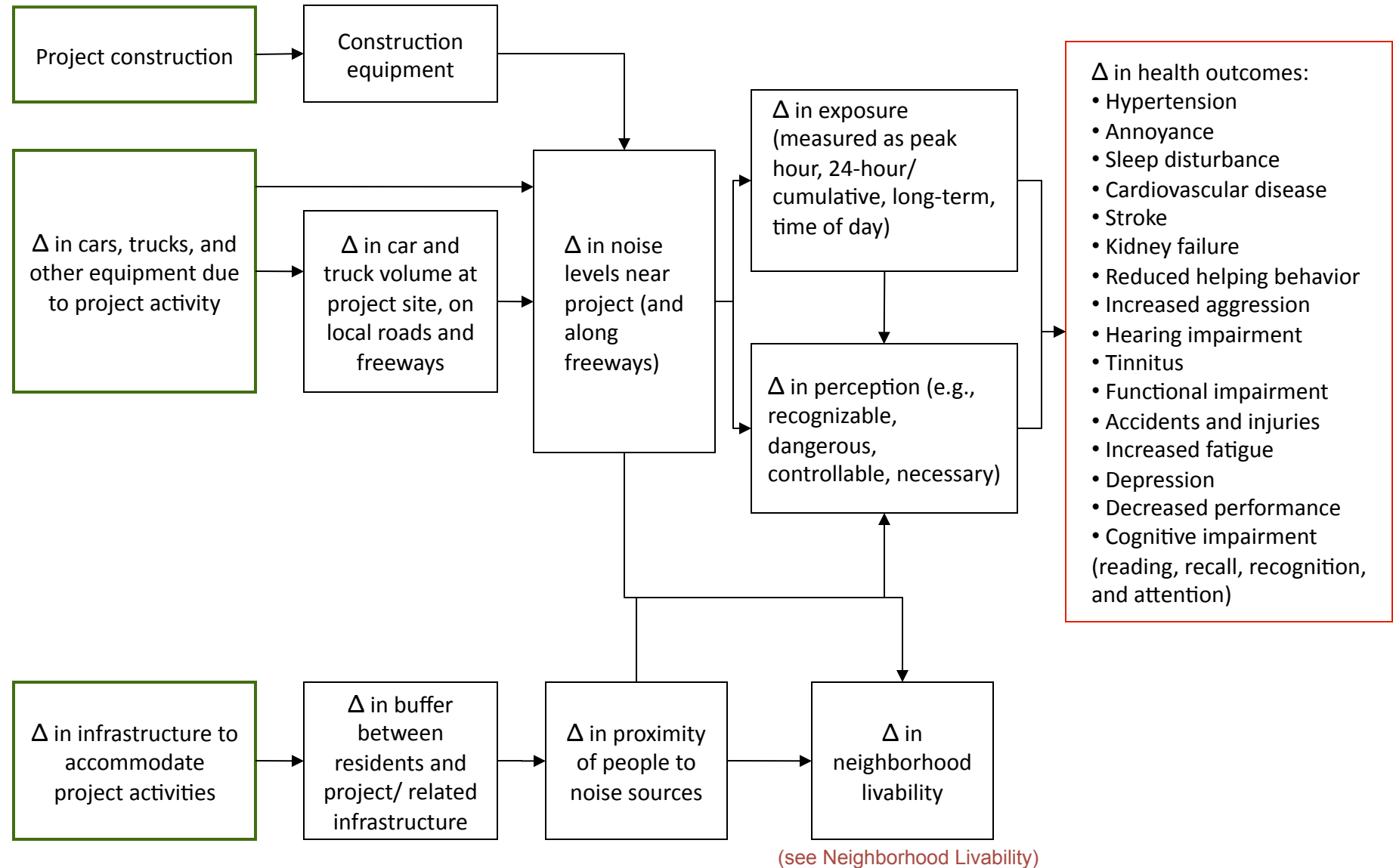


The following 7 pages include pathway diagrams showing links between port expansion and health.

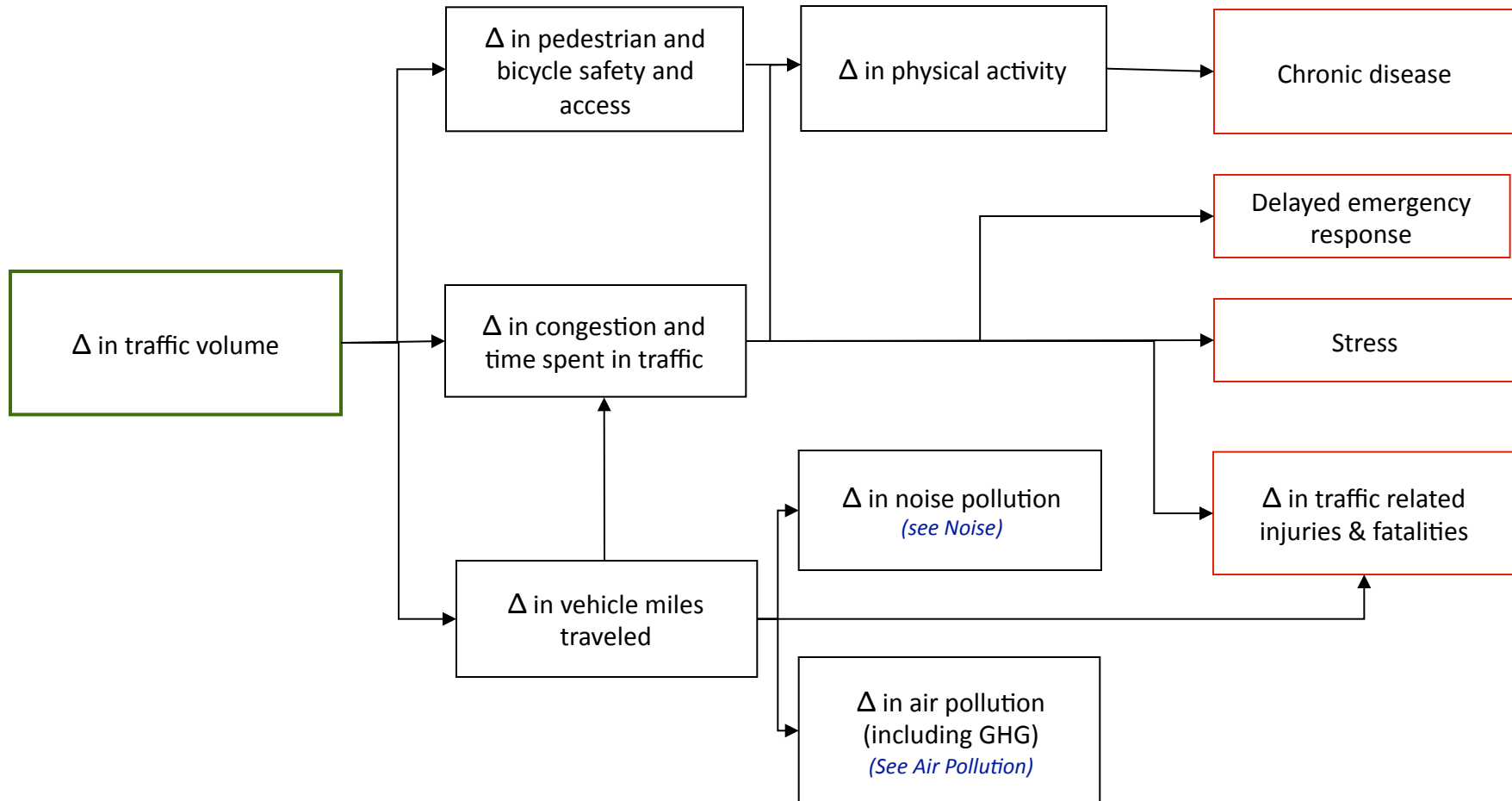
1. Air Pollutant Effects



2. Noise Effects

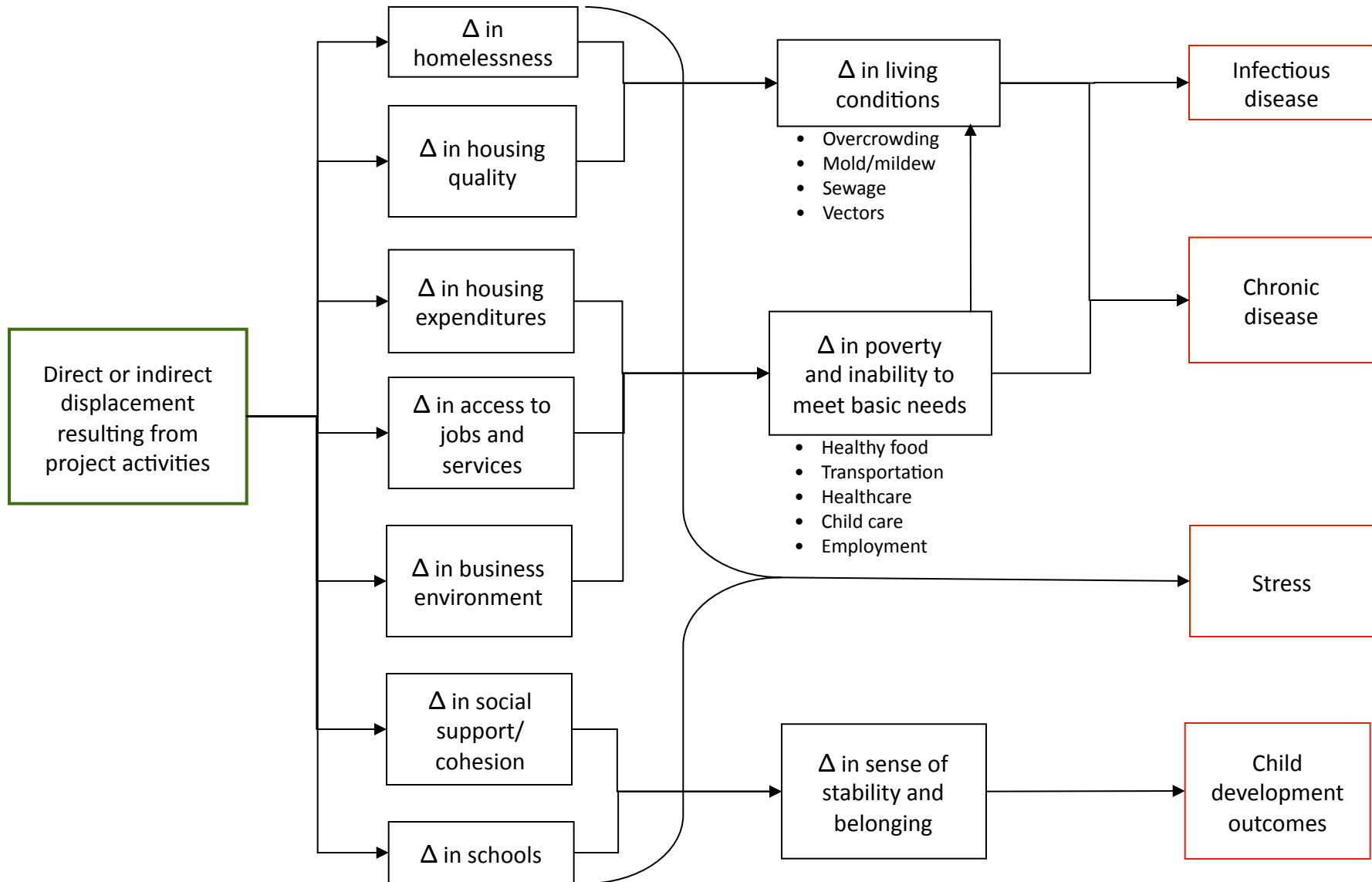


3. Traffic Volume Effects



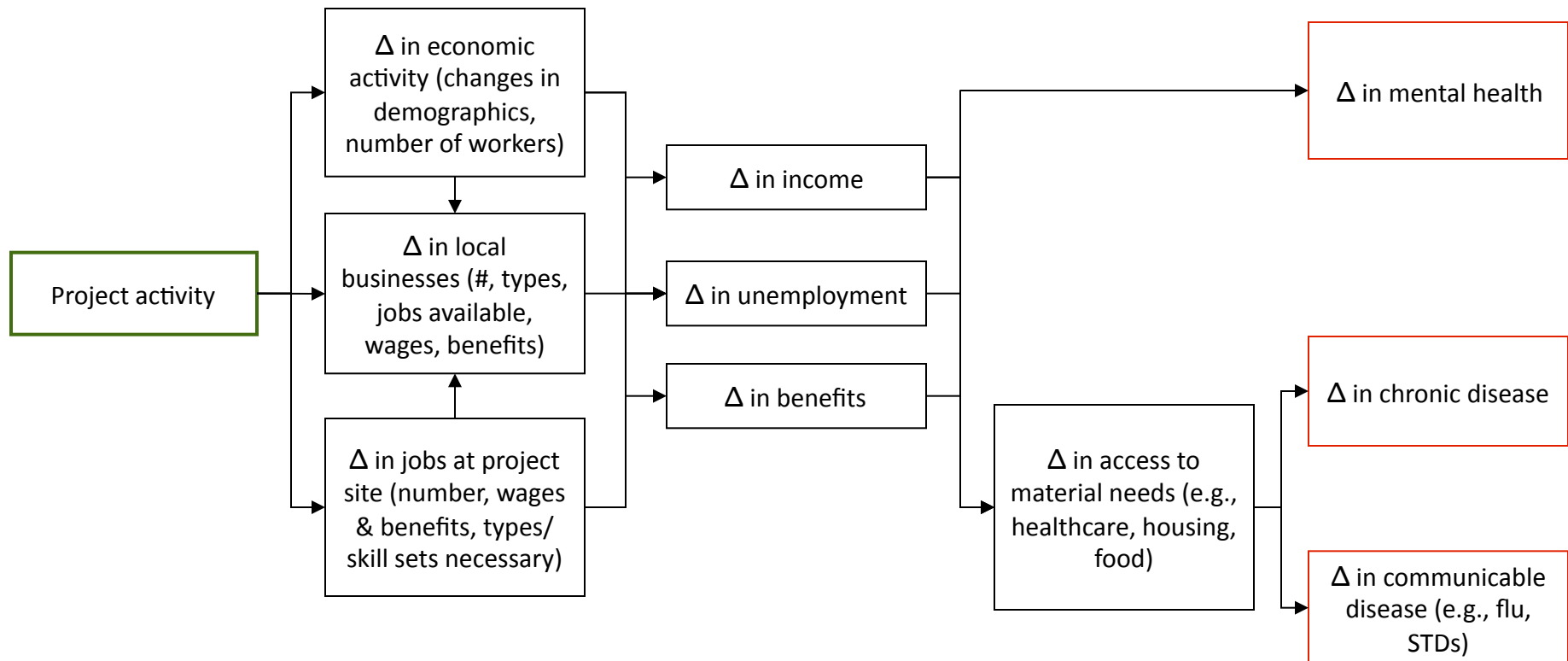
- Health impacts of stress include: poor mental health, increased inflammatory response, decreased immune response
- Health impacts of chronic disease includes: heart disease, diabetes, hypertension,
- Health impacts of delayed emergency response times include: stress, potential for survival and recovery

4. Displacement Effects



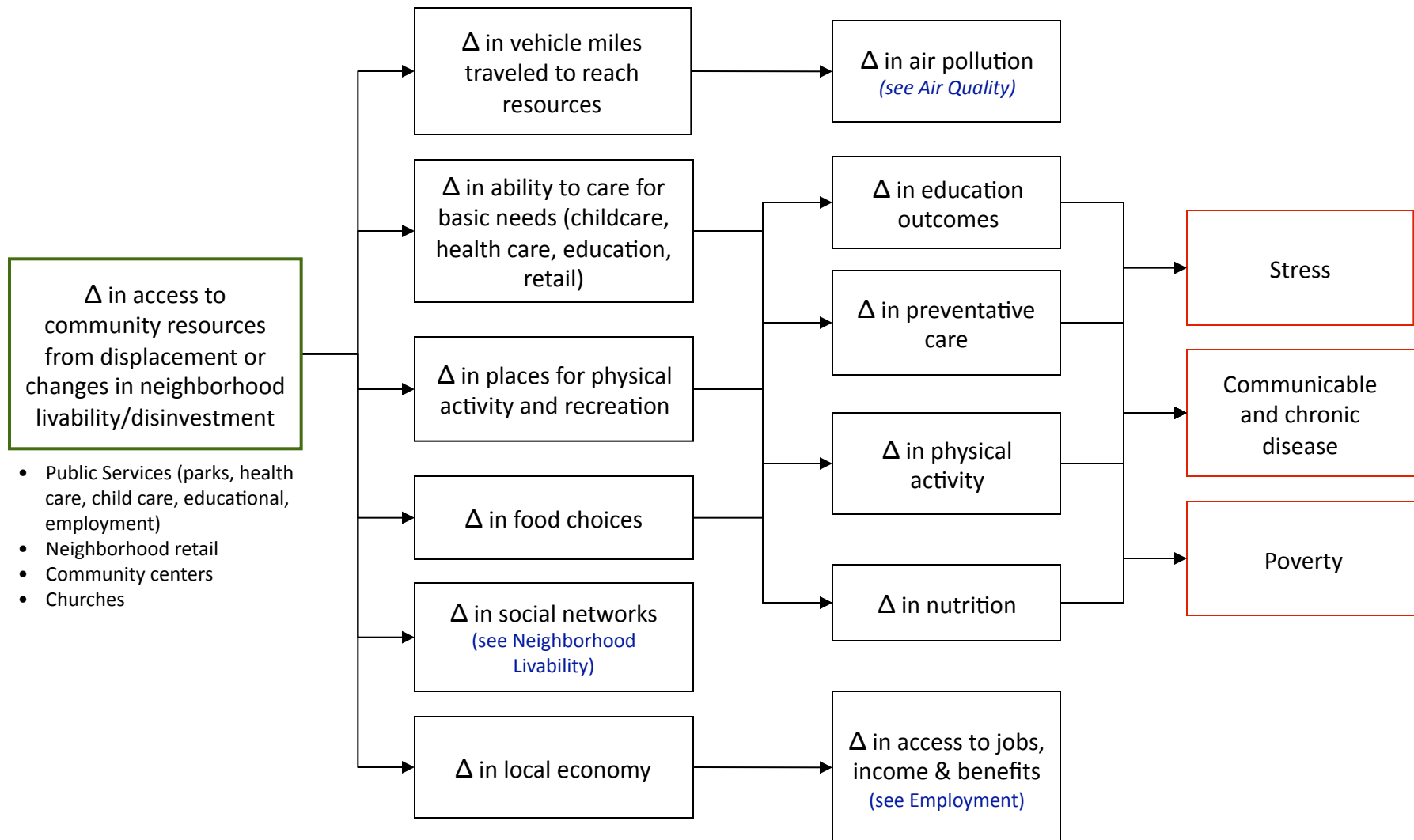
- Health impacts of stress include: poor mental health, increased inflammatory response, decreased immune response
- Health impacts of chronic disease includes: heart disease, diabetes, hypertension

5. Employment Effects



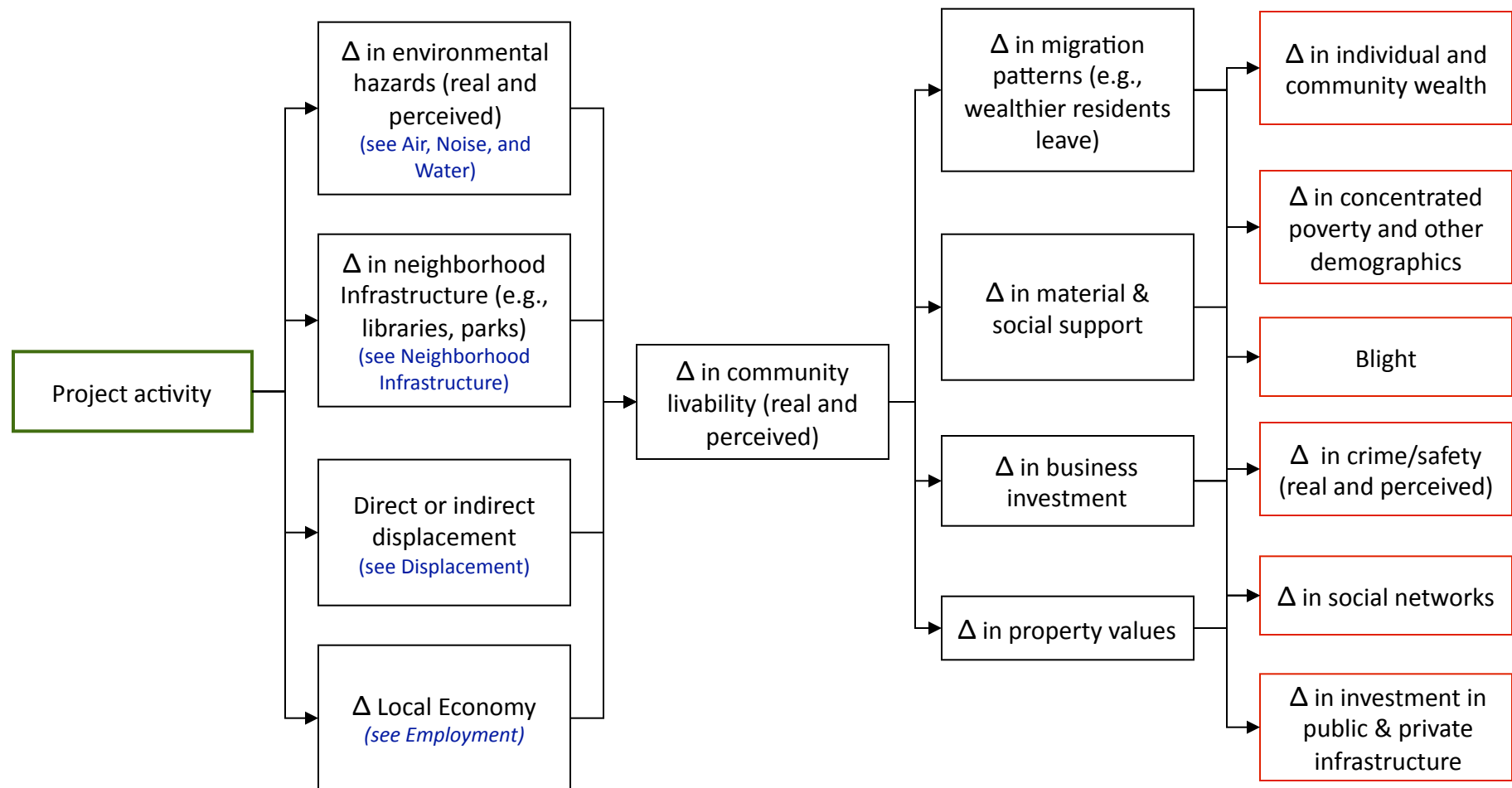
- Health impacts of mental health include: stress-related illness, substance abuse, decrease in lifespan
- Health impacts of chronic disease includes: heart disease, diabetes, hypertension,

6. Neighborhood Infrastructure Effects



- Health impacts of stress include: poor mental health, increased inflammatory response, decreased immune response
- Health impacts of chronic disease includes: heart disease, diabetes, hypertension,
- Living in poverty is associated with a number of poor health outcomes

7. Effects from Changes in Neighborhood Livability



- Health outcomes include injury and morbidity from crime; stress-related illness; effects from lack of social cohesion; effects from lower incomes (e.g., from lack of access to jobs, education, etc.); increased risk of injury/death from lack of police and fire protection and others