



# ITT

## ANGEL Service

## Airborne Natural Gas Emission LIDAR

**EPA Natural Gas STAR Program**  
Annual Implementation Workshop  
Houston, Texas  
24 October 2006

**Dan Brake**

email: [daniel.brake@itt.com](mailto:daniel.brake@itt.com)

phone: (585) 269-5070

website: [www.ssd.itt.com/angel](http://www.ssd.itt.com/angel)

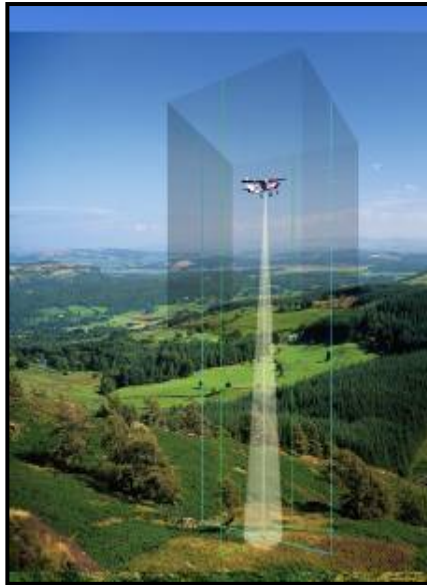
*Engineered for life*



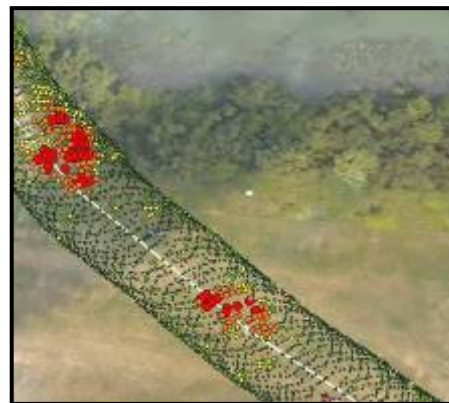
# ITT ANGEL Service

## *Taking Leak Surveys and Corridor Monitoring to New Heights*

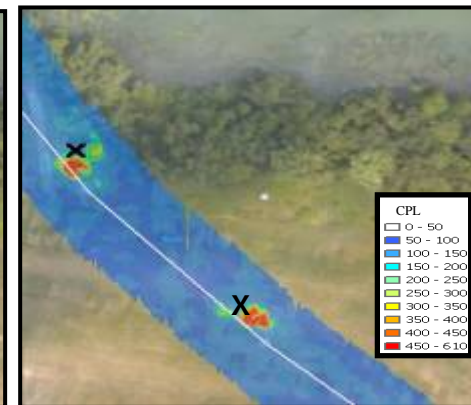
- ✓ *Differential Absorption LIDAR (DIAL)* laser technology provides accurate leak detection and quantification.
- ✓ Captures survey-grade aerial orthophotography of right-of-way (ROW) and surrounding areas.
- ✓ Captures color digital geo-video of ROW and surrounding areas.
- ✓ Non-intrusive remote surveys.
- ✓ GIS-ready datasets show exact scan locations. Assures leak survey was thoroughly completed.



ANGEL Collection Aircraft and Sensors



DIAL Scan Pattern



DIAL Results - Leaks Detected

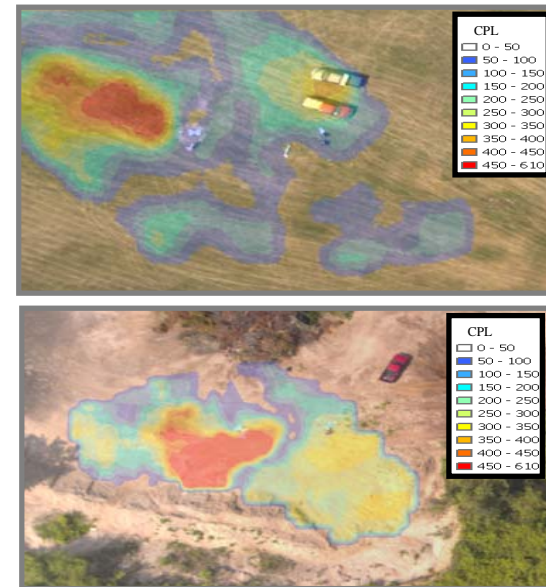
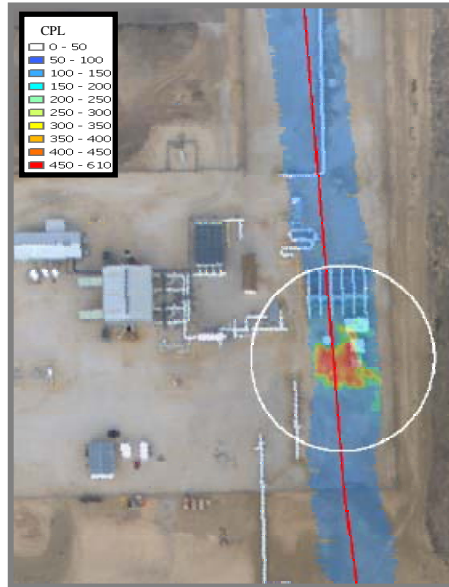
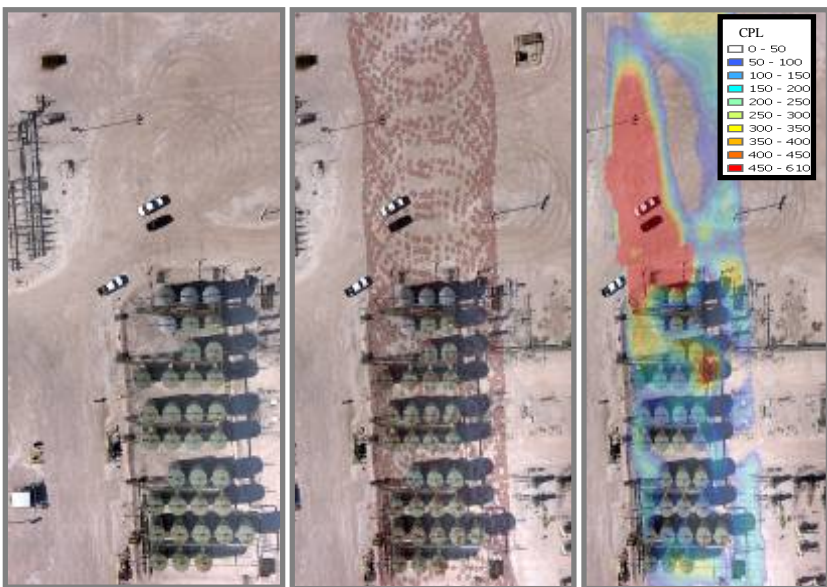


## Differential Absorption LIDAR (DIAL) Laser Technology

- ✓ Detects and measures natural gas pipeline leaks and facility emissions.
- ✓ Broad area coverage -- 400 times greater coverage than traditional walking methods. 3D coverage.
- ✓ GIS-ready datasets assures pipeline/facility was scanned. Provides auditable results.
- ✓ Operates over varying terrain and weather conditions.

## Airplane Platform Cessna Grand Caravan 208B

- ✓ Provides nationwide coverage with rapid deployment.
- ✓ Operates 120 times faster than traditional walking methods. Up to 1,000 miles of collection per day.
- ✓ Eliminates private property access issues by operating from public airspace.
- ✓ FAA approved aircraft and flight operations.

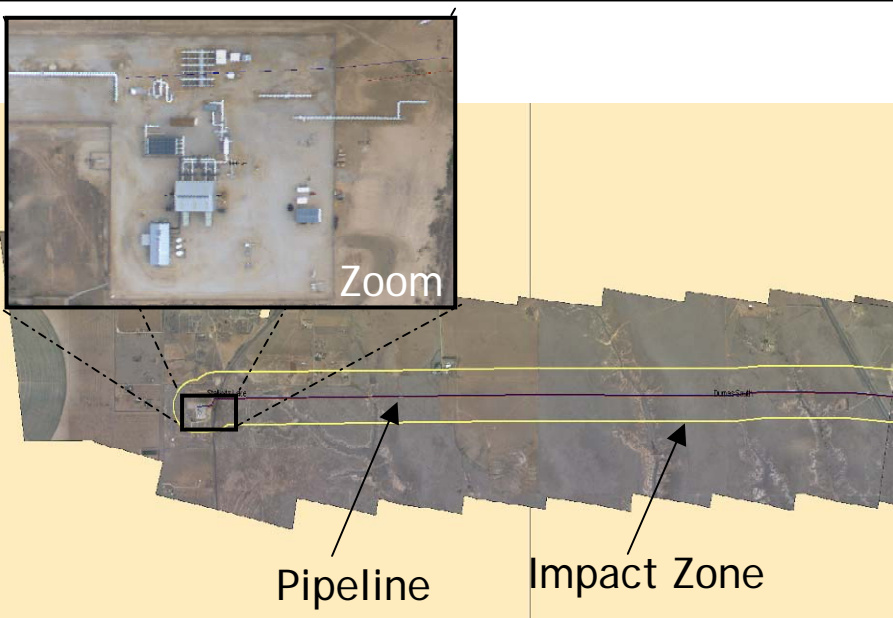


Leaks Detected using DIAL Technology from Aircraft



## GIS Mapping Imagery

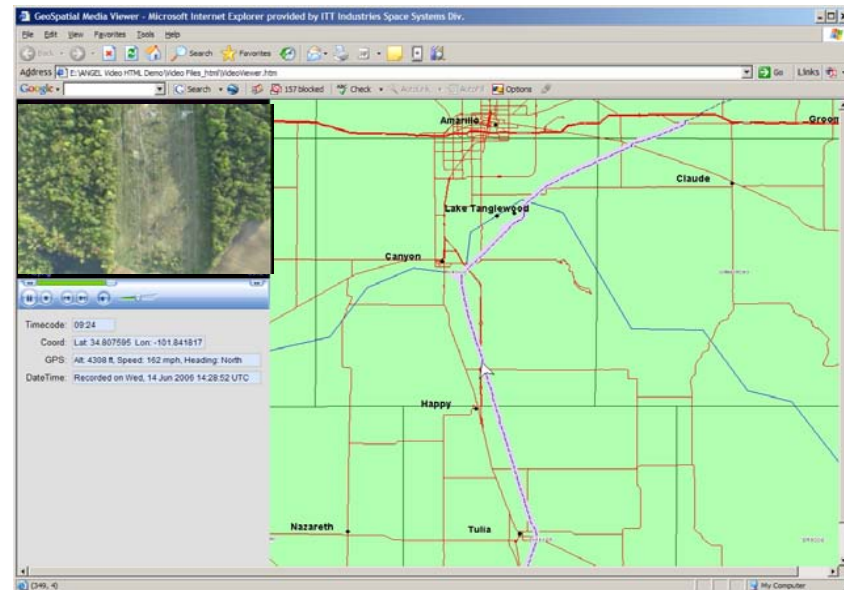
- ✓ Provides current, high-resolution imagery of your ROW and surrounding areas.
- ✓ Updates your GIS system with color, one-foot resolution, orthorectified and mosaic imagery.
- ✓ Digital sensor delivers 4,000 by 4,000 pixel images.
- ✓ Supports alignment sheets, HCA identification, threat identification, site permitting, engineering analysis, environmental studies, and emergency planning.



Mapping Imagery Provides One-Foot Ground Resolution

## Digital Color Video

- ✓ Allows you to easily patrol any pipeline segment from your desktop computer.
- ✓ Encodes video data with GPS information, so precise locations can be identified.
- ✓ Play, pause, fast forward, rewind, and even print video frames from digital files.
- ✓ Provides permanent record of aerial patrolling, easement conditions, encroachment monitoring, intrusion detection, and problem areas.



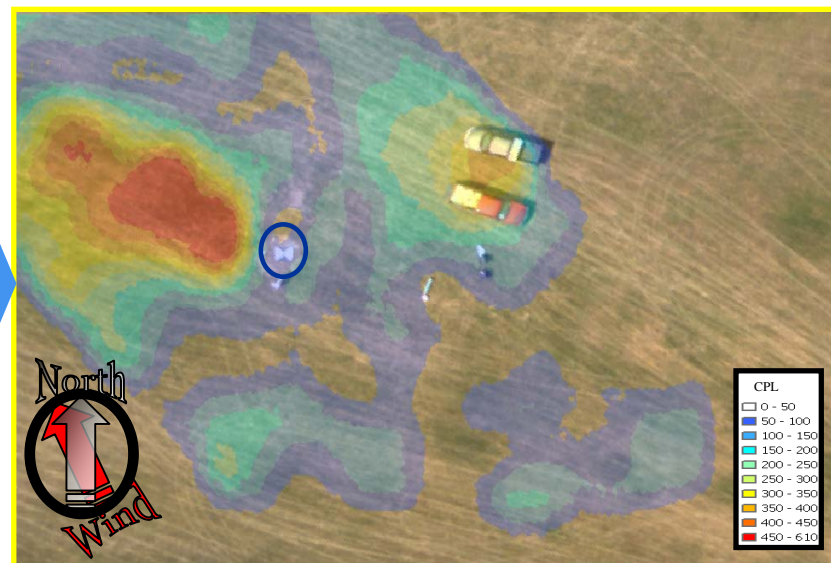
Integrated Digital Video with Electronic Maps





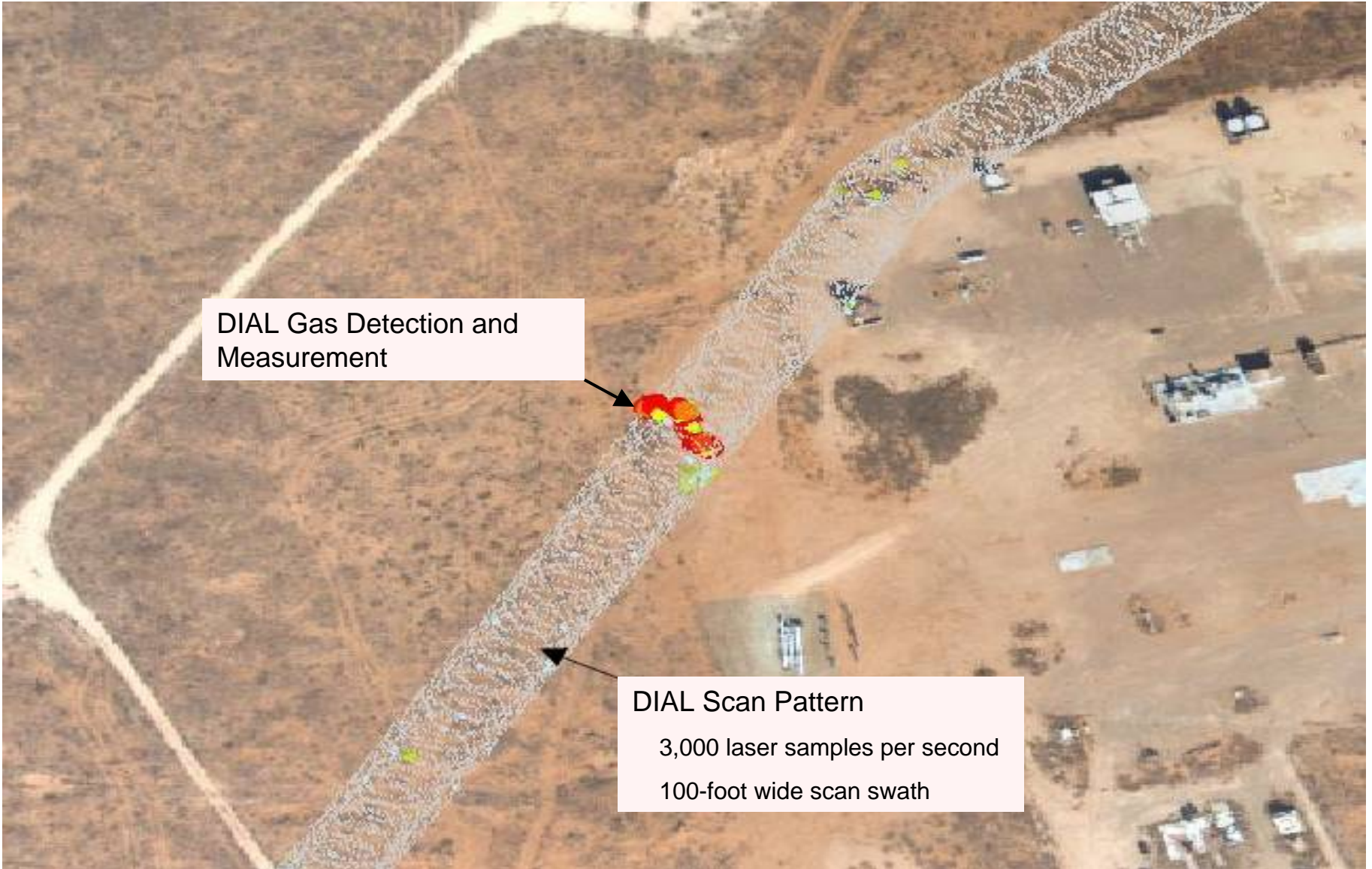
# ITT ANGEL Service

Example: Grass Field and Bare Earth – Controlled Releases – New York.

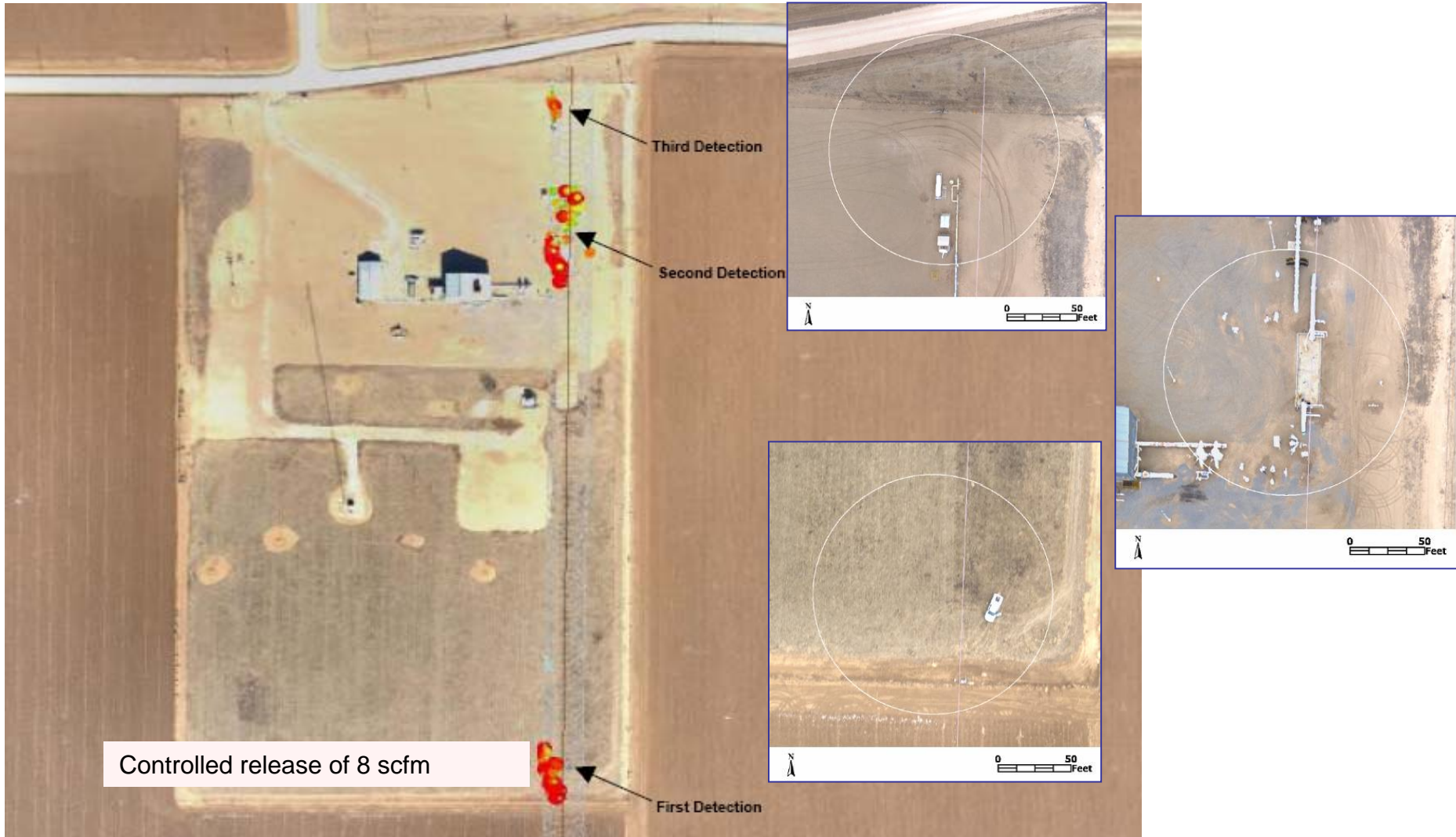




## Example: Natural Gas Transmission Pipeline Route – Texas



# Example: Compressor Station – Natural Gas Transmission Pipeline – Texas

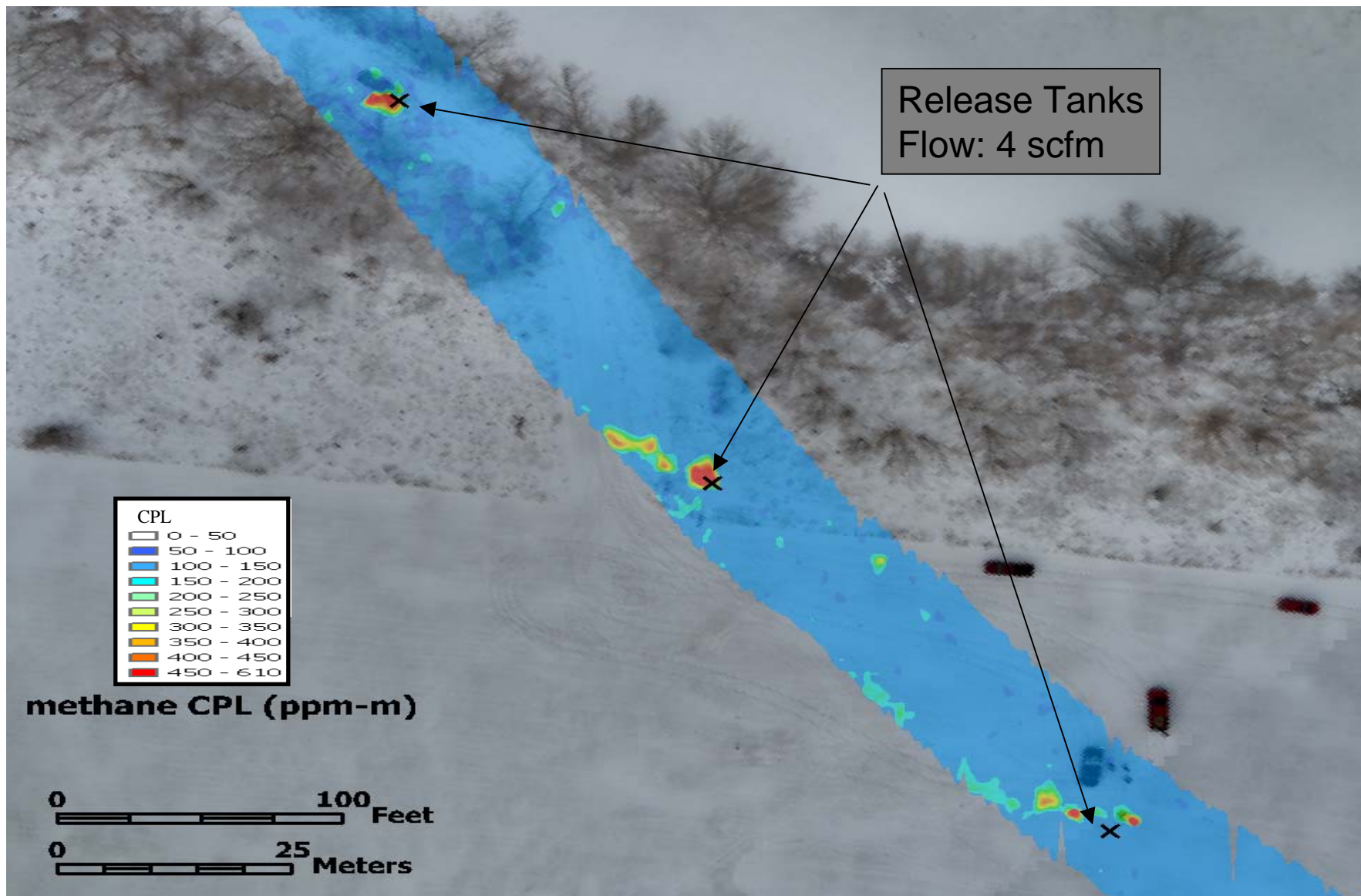


Location D ANGEL Service Detection, 25 Jan 06 @ 10:16 AM





Example: Snow Covered Right-Of-Way – Controlled Release – New York.





## The ANGEL Service is Fully Operational and Commercially Available.

- Completed field validations with numerous pipeline owners/operators.
  - Over 3,000 miles of DIAL leak surveys and corridor/facility monitoring.
- Successfully completed contracts with both **US DOE** and **US DOT**.
  - RMOTC Test Range (Casper Wyoming) – September 2004.
  - HALOS (Hazardous Liquids Lidar Observation Study) – September 2006
  - Rapid Emergency Response (through October 2007)





# ITT

## ANGEL Service

## Airborne Natural Gas Emission LIDAR

**EPA Natural Gas STAR Program**  
Annual Implementation Workshop  
Houston, Texas  
24 October 2006

**Dan Brake**

email: [daniel.brake@itt.com](mailto:daniel.brake@itt.com)

phone: (585) 269-5070

website: [www.ssd.itt.com/angel](http://www.ssd.itt.com/angel)

*Engineered for life*