

Smart LDAR

Bud McCorkle

Leak Surveys Inc.

www.leaksurveysinc.com

bmccorkle@leaksurveysinc.com

EPA Annual Natural Gas STAR

Workshop

Date: October 24, 2006

Comparison


● Method 21

- Labor Intensive
- 100-500 ppm
- 90% of all emissions come from 1% of the leaks

● Smart LDAR

- 3000 components per hour
- Emissions are measured in gr/hr

Technical Advantages

- Optical Imaging leak surveys 20 times faster than traditional methods
 - Finds the bigger leaks faster
 - Pinpoints the exact location of the leak
 - Survey areas of safety concerns from a distance
 - Finds safety issues before they happen
- 

Changes in LDAR Programs

Alternate Work Practice (1q 2007)

docket # **EPA-HQ-OAR-2003-0199**

DOT approval for annual leak surveys

Best work practice for Ships & Barges

Floating roof inspections

Other Uses for the Hawk Leak Detection System

- Transmission and Gathering Lines
- Refineries and Petro-Chemical Plants
- LDAR programs for Ships & Barges
- Gas Processing Plants
- Tank Farms
- Turn arounds, Start up's and Shut Down's
- Emergency Response

Past

- ~5 side by side studies comparing Method 21 to Smart LDAR
- ~Fugitive Emissions monitoring outside traditional components
- ~Floating roof monitoring
- ~Houston Ship channel and Baton Rouge projects

Future

- ~Smart LDAR pilot projects and Studies
- ~Baton Rouge projects
- ~Smart LDAR

Warning

The video's contained in the rest of this presentation are of very large environmental emissions and are best described as

Shock and Awe

Viewer discretion is advised.



Caution H2S

Safety is
always first

Product Loss

Environmental
Emissions



The invisible becomes visible

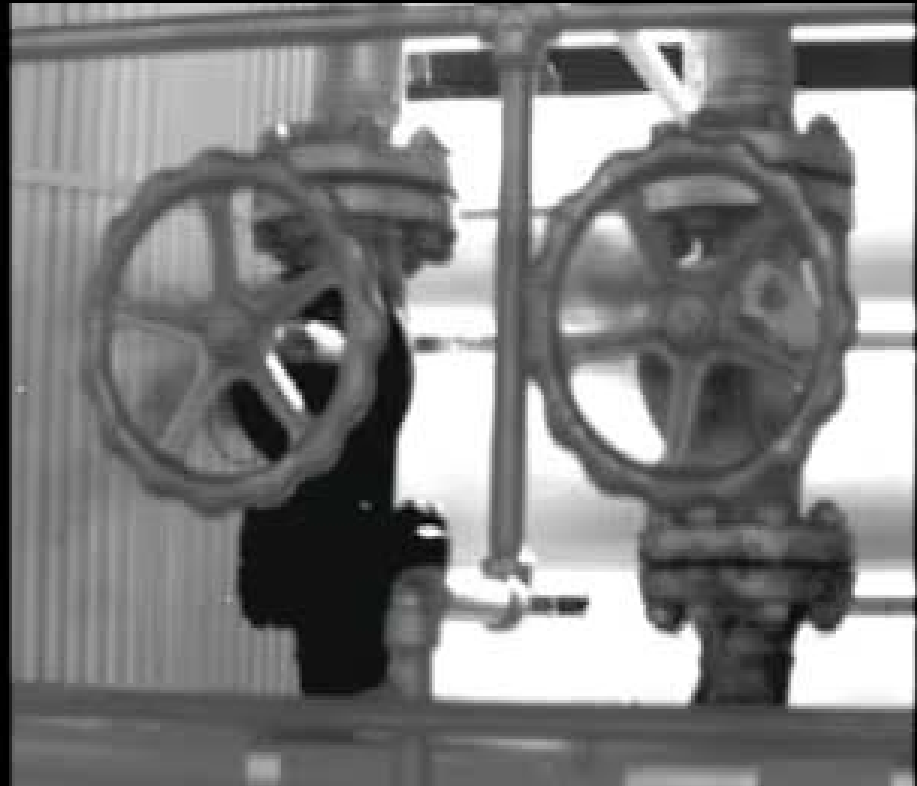
- Slotted guide pole



Twin Sisters

Pinpoint leak with
one scan

Survey 3000
Components per
hour



Birthday cake

Survey Floating
roof tanks
from the
landing



Hurricane Katrina

- Oil spill



Hurricane Katrina

Canal spill



Lawnmower Gas

Emissions
are
everywhere



Service Stations

This is why
you don't
smoke at
the gas
station

