



WGL

ENERGY ANSWERS.
ASK US.

WGL'S SUSTAINABILITY JOURNEY

MELISSA E. ADAMS, CHIEF CORPORATE SOCIAL RESPONSIBILITY OFFICER

MAY 2017

WGL'S SUSTAINABILITY JOURNEY ...

AN EVOLVING PROGRAM FOCUSED ON VOLUNTARY INITIATIVES, COLLABORATION AND OPPORTUNITY

>1993: EPA Natural Gas STAR;
focus on safety; environmental
stewardship; recycling,
environmental audits

**2010/2011: 2020 Sustainability
Targets Set** focused on absolute
and intensity GHG emissions

**2008: Low Carbon Strategy
Initiatives** focus on deployment of
Renewables to CNG to new
Utility EE Programs

**2016: Washington Gas signs on as
Founding Partner of EPA Natural
Gas STAR Methane Program**

**2009: First GHG Emissions
Inventory launched**

**2016-2017: WGL exceeds 2020
targets early; 1st GRI Sustainability
Report; Announces 2025
Sustainability Targets**

WASHINGTON GAS SUSTAINABILITY GOALS

EXCEEDED AND ACHIEVED AHEAD OF SCHEDULE!

✓ 74%!

70%

Absolute reduction in greenhouse gas (GHG) emissions from fleet and facilities by 2020

20%!

18%

Reduction in GHG for every therm of natural gas delivered to our customers by 2020

Base year: 2008

REACHING OUR GOALS

Fleet

- Replacing gasoline & diesel vehicles with NGVs
- Idling reduction
- Safe driver training
- Rigorous maintenance procedures

Facilities

- Energy efficiency construction
- Renewable energy projects
- Energy efficiency projects
- Energy audits

Gas Distribution

- Accelerated pipeline replacement programs
- Improvements to gas supply surface facilities

Culture

- Embedding sustainability into the WGL Holdings culture
- Employee training & education
- Volunteer eco-events
- Recycling & Teleworking

ADVANCED PIPELINE REPLACEMENT PROGRAMS

**MODERN INFRASTRUCTURE REDUCES GHG EMISSIONS
WHILE INCREASING SAFETY AND RELIABILITY**

**Washington
DC**

**Maryland
STRIDE**

**Virginia
SAVE**

WGL 2025

SUSTAINABILITY TARGETS

CLEAN
ENERGY

0

Our fleet and facilities
will be carbon neutral

RESILIENT
INFRASTRUCTURE

38%

38% reduction in fugitive
carbon intensity per delivered
therm of natural gas

STRONG
COMMUNITIES

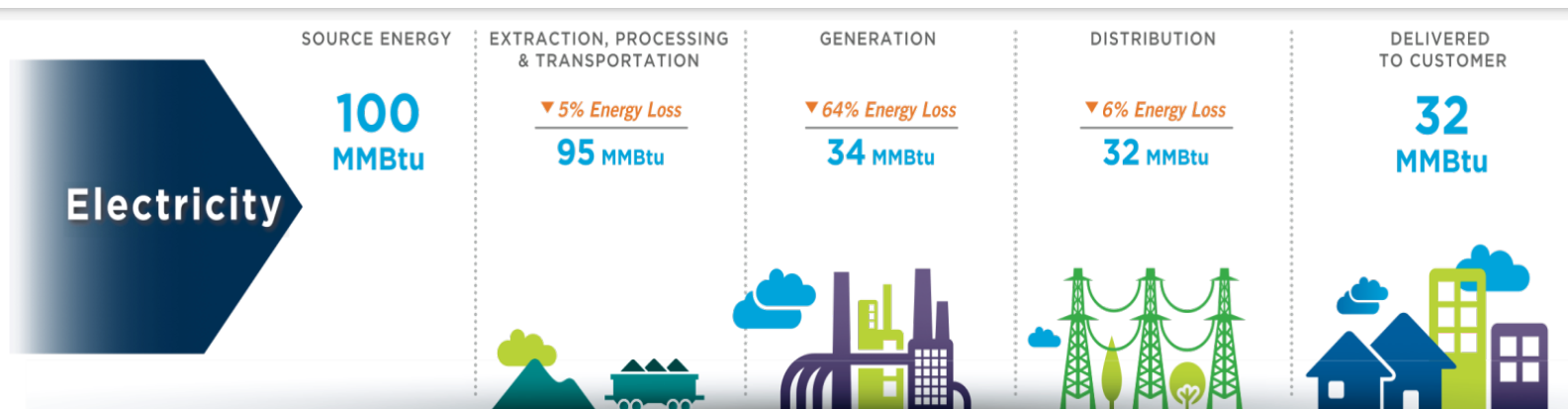
18M

18 million metric tons of
avoided greenhouse gas
emissions by our customers
(2015 – 2015)

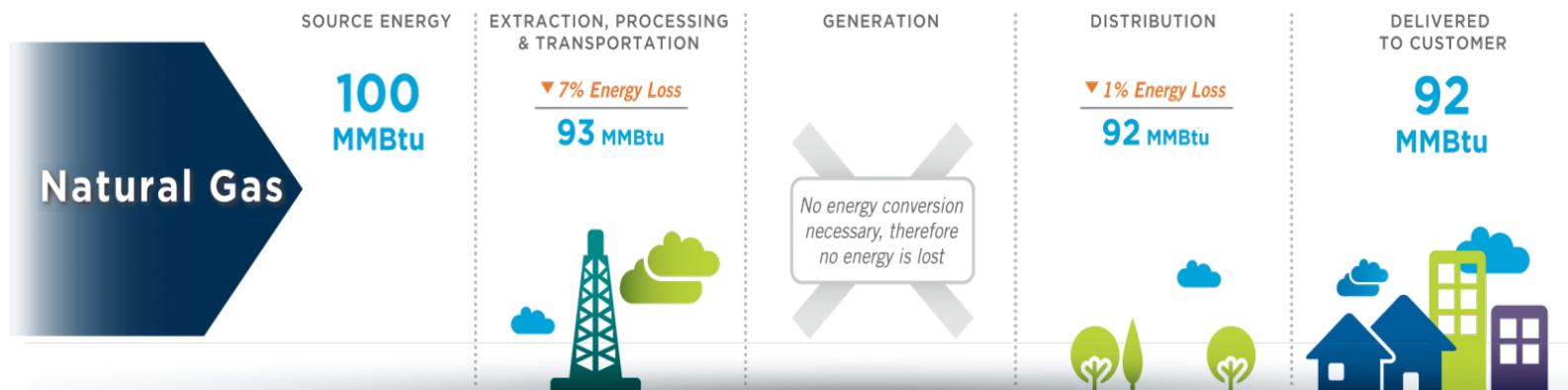


DIRECT CONSUMPTION OF NATURAL GAS

3X AS MUCH ENERGY



**Based on 2007 actual generation mix of all energy sources*

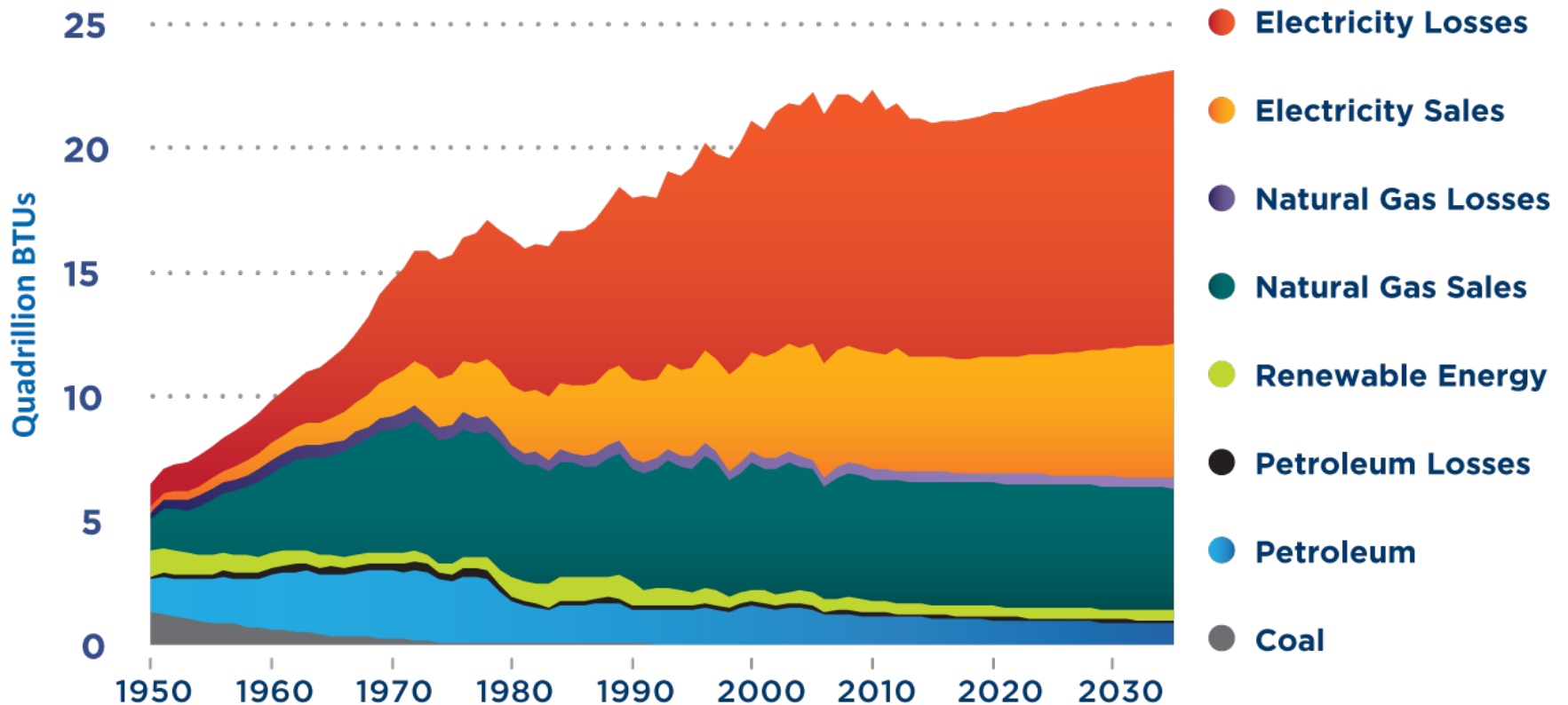


Source: American Gas Association



NATURAL GAS AND ENERGY PRODUCTIVITY

THE LOSS OF USABLE ENERGY ASSOCIATED WITH ELECTRICITY EQUALS ABOUT HALF OF THE TOTAL ENERGY CONSUMED IN THE RESIDENTIAL AND COMMERCIAL SECTORS.



NATURAL GAS: CRITICAL COMPONENT OF A CLEAN ENERGY ECONOMY

AN ABUNDANT, AFFORDABLE FUEL DELIVERED BY RELIABLE NATIONWIDE INFRASTRUCTURE



P2G

RESILIENT



RELIABLE



CLEAN



LOW GHG EMISSIONS