

Garden City Field Office From 11/1/2007 thru 11/10/2008



Reduced
Equipment
Emissions
by 226,073
MCF



Average
Gas Price
\$6.83

Total
Emission
Savings
\$1,544,078

Site Before Upgrade (with Production Unit)



Site After Upgrade (with Mechanical Dump Separator)



5

Site After Upgrade (with Mechanical Dump Separator)



6

Top BMP Categories for Garden City



Replace
Production Unit
with Mechanical
Dump Separator

• **174,019 MCF**



Plunger Lifts

• **24,187 MCF**

No-Bleed Chem
Pump

• **12,575 MCF**

Solar Chemical Pump



Plunger Lifts



12 Volt Pump Utilizing Telemetry Solar Panel



12 Volt Pump and Backup Battery



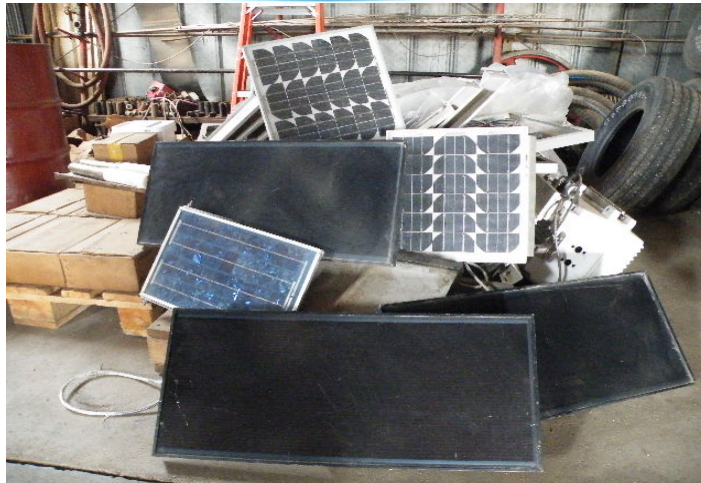
11

12 Volt Pump Utilizing Compressor Batteries



12

Unused Equipment (Solar Panel's) in Inventory



13



*Can be retrofitted into new Solar Pumps built by our people in the field.

Projects We Have Recently Implemented for improved utilization of 12 Volt LMI Pumps



Use Existing Telemetry
Solar Panels Already on
Site



Use Existing Power
from Compressor
Batteries Already on
Site

14



Always Look For Reductions



- No Blow Setups For Compressors
- 12 Volt Starter instead of Gas Start on Compressors
- Pumping Units, Foamer & Plunger Lifts installed on Flowing Gas Wells
- Green Completions
- Electric Compression
- Solar Pumps Built with Used Solar Panels

Auto Start Gas-Jack Converted to No Blow System



Blow Line Shut Off



17

Gas start compressor converted to 12 volt starter



18

Compressor Site Before Electrification



19

Site After Electrification



20

Added Bonus From BMPs



- Methanol usage is 25% to 30% less on Solar & Electric pumps compared to pneumatic.
- Credit back to lease for refurbished Production Units used elsewhere in company.
- No down time in pumps because of frozen gas supply.
- Electric compression eliminates need for Air Permit.
- Electric compression cleaner to operate.



21

2009 & Beyond

