



Update on EPA's Ports Initiative

Sarah Froman

U.S. EPA - Office of Transportation & Air Quality

MSTRS Meeting

May 22, 2018

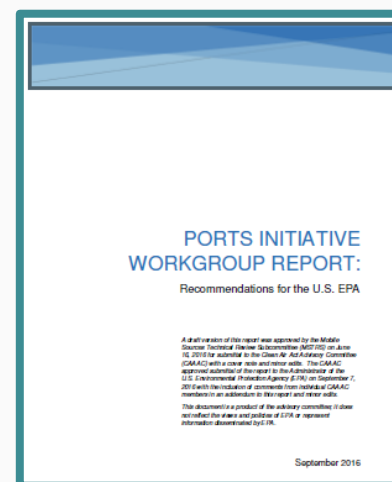


September 2016 Recommendations from MSTRS Ports Initiative Workgroup

Overarching recommendation: provide funding, technical resources, and expertise to enable and encourage environmental improvements.

Focal Areas

- Increasing and Targeting Funding
- Community-Port Engagement
- Guidance on Inventories and Metrics
- Guidance on Emission Reduction Strategies
- Coordinating Relevant Government Programs
- Information Clearinghouse and Communications



www.epa.gov/caaac



Ports Initiative Elements

Funding

Helping Ports Capitalize on
Funding for Clean
Technologies

Technical Resources

Providing Tools to Help
Identify Smart Infrastructure
Investments

Collaboration

Promoting Port-Community
Collaboration for Effective
Planning

Coordination

Increasing Efficiency in
Federal Government and
Port Operations

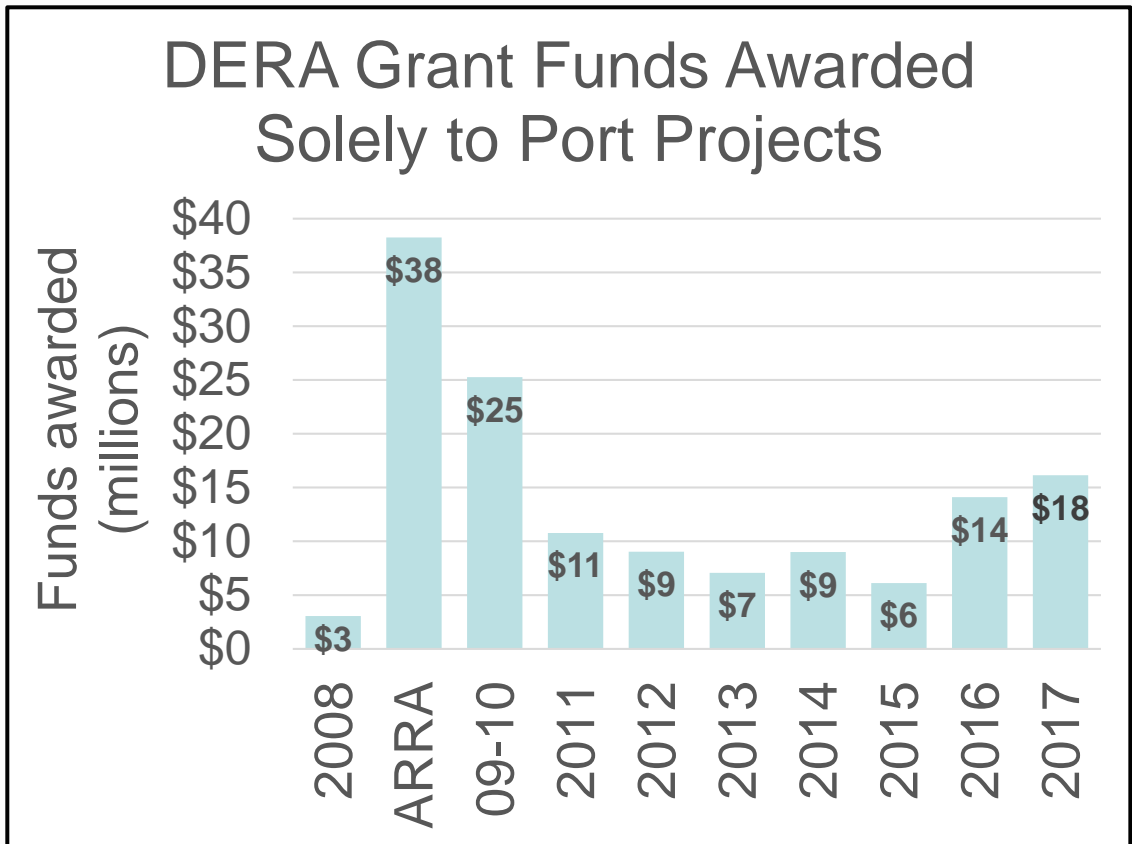
Communications

Creating a Knowledge Clearinghouse

Funding Activities

Helping Ports Capitalize on Funding for Clean Technologies

- 2018 DERA RFP open through June 12.
- Regional staff helping to make connections to other funding sources.
- Planning national CMAQ webinar for port stakeholders.
- VW beneficiaries demonstrating interest in local port projects.



Technical Resources Activities

Providing Tools to Help Identify Smart Infrastructure Investments

- Completing Port Everglades partnership on inventory and emissions reduction scenario assessment – **see next three slides**
- Supporting other port emissions inventory/analysis including in Chicago/Detroit and Seattle/Tacoma.



- Launching new advanced technology assessment.
- Promoting National Port Strategy Assessment.
- Developing operational strategy factsheets and other materials.



Technical Resources

Port Everglades Partnership Activities

- Port Everglades (PEV):
 - Develop an activity-based baseline inventory for port facilities and operations
 - Support the development of EPA's emissions inventories and analyses
 - Provide technical and policy support to EPA's project activities

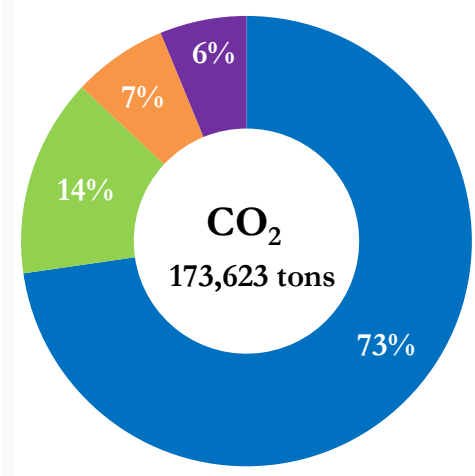
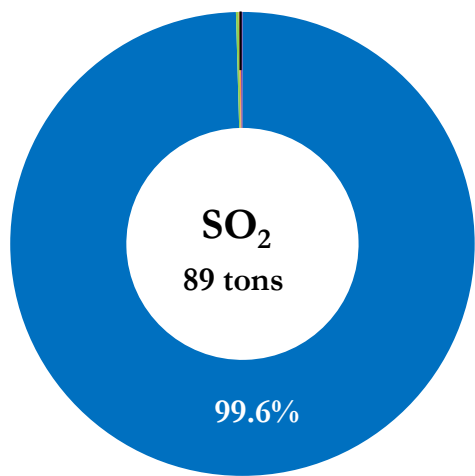
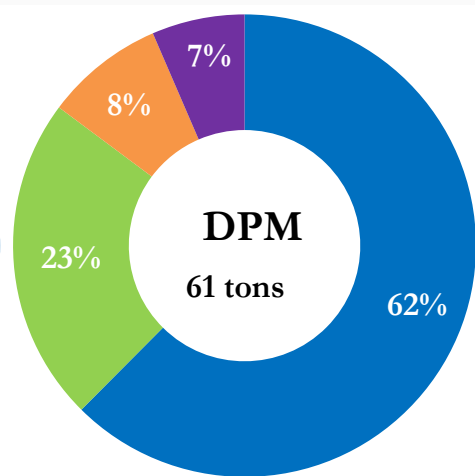
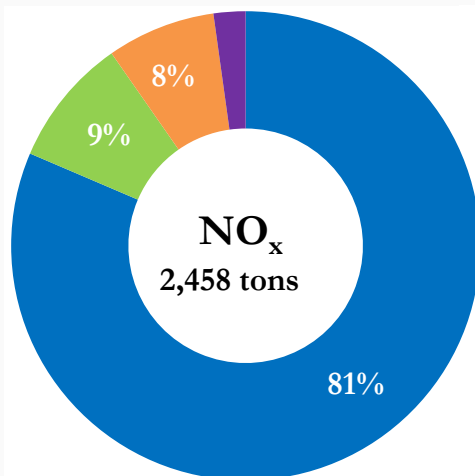
- EPA:
 - Support the development of on-port baseline emissions inventory
 - Develop baseline emissions estimates for mobile source corridors outside of the Port's jurisdictional boundary
 - Develop BAU inventories and reduction scenarios for 2025, 2035, and 2050
 - Develop and document methods, lessons learned, and practical examples that EPA can share with stakeholders, and incorporate into our future update of the EPA's 2009 Port Inventory Guidance



Technical Resources

Port Everglades 2015 Baseline Air Emissions Inventory

- Ocean-going vessels
- Cargo handling equipment
- Harbor craft
- On-road vehicles
- Locomotives

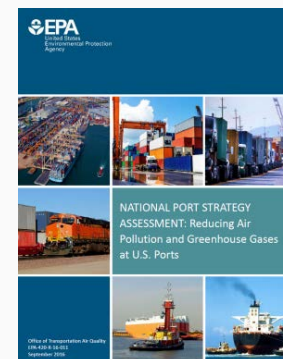




Technical Resources

Tools are available for developing port inventories

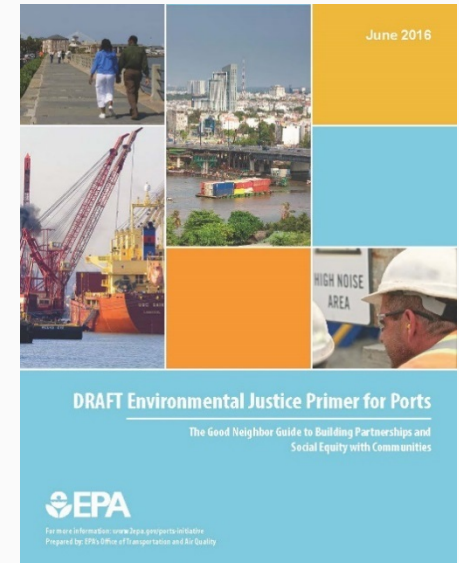
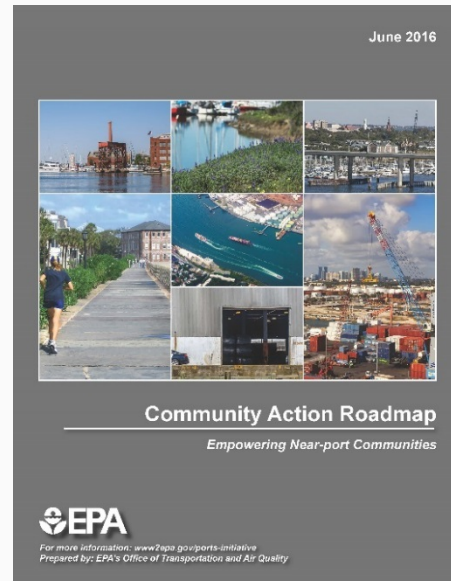
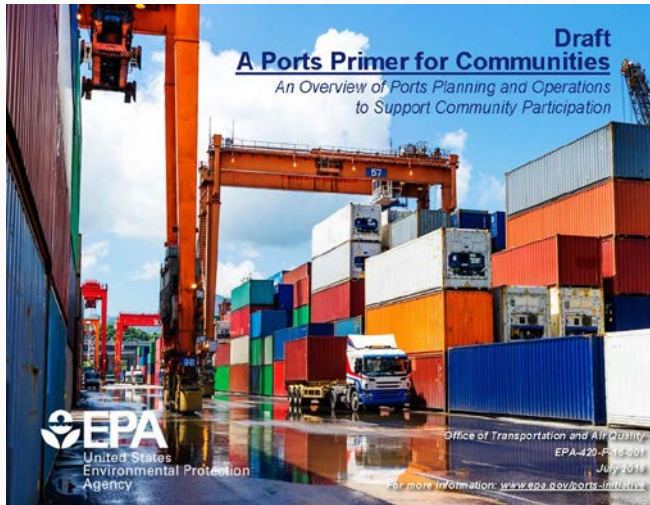
- We have methods to estimate OGV, harbor craft, and locomotive inventories
- MOVES can be used to estimate emissions from onroad and nonroad sectors
- We will use our experience to update EPA's 2009 Port Inventory Guidance in the future



EPA can invite MSTRS to a full briefing via webinar on Port Everglades Partnership after we release the analysis.

Collaboration Activities

Promoting Community-Port Collaboration for Effective Planning



- EPA convening dialogues with local partners, delivering technical assistance, and piloting draft tools
 - Pilot locations: Savannah, GA; New Orleans, LA; and Seattle, WA
 - See www.epa.gov/ports-initiative/pilot-projects-port-and-near-port-community-collaboration

Coordination Activities

Increasing Efficiency in Federal Government and Port Operations

- Federal coordination to support clean air projects as part of major federal infrastructure projects.
 - Working on case study of Army Corps marine vessel repower offset program to meet general conformity in New York/New Jersey.



- Coordination with other EPA offices to amplify efforts and ensure effective implementation of activities.



Communications Activities

Creating a Knowledge Clearinghouse

HQ and Regions developing web resources, hosting public events, and engaging stakeholders to promote clean port projects.

Examples:

- Website enhancements in the works.
- Regular e-newsletters.
- Developing case study on Clean Air Action Plan for Ports of LA and Long Beach.
- Events as part of regional Diesel Collaborative forums:
 - Southeast Ports Workshop (Nov)
 - Mid-Atlantic webinar on port resiliency research (Feb)
 - Northeast Ports Workgroup call on DERA (March)
 - Midwest meeting with sessions on ports and goods movement (April)



EPA's Ports Initiative website and newsletter sign-up:

www.epa.gov/ports-initiative