
PERMIT ATTACHMENT

APPENDIX III

SITE DIAGRAMS

This document was not altered from the April
2016 Application.

September 2018

APPENDIX III

SITE DIAGRAMS

FOR

SIEMENS INDUSTRY, INC.

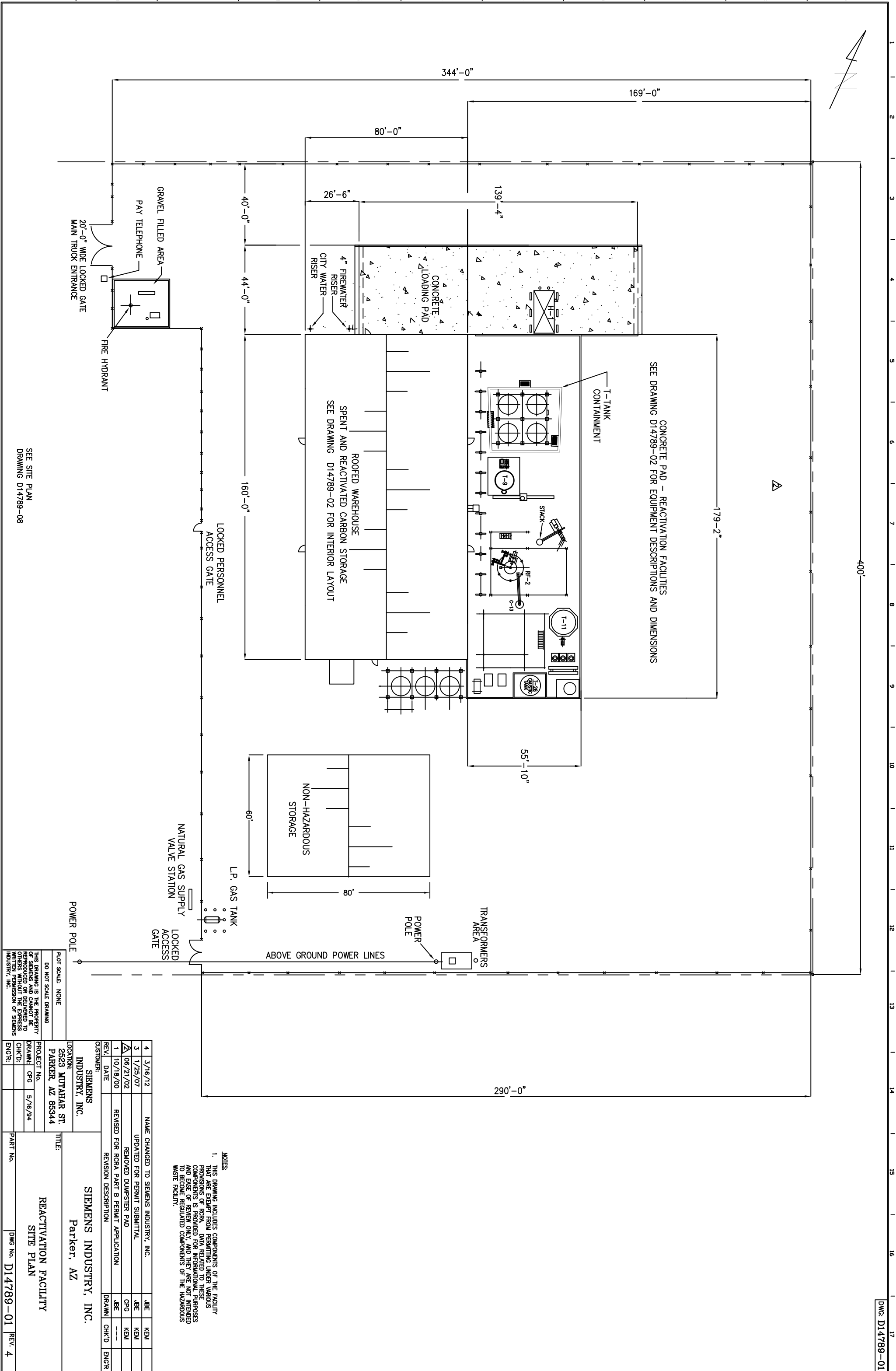
PARKER REACTIVATION FACILITY

PARKER, ARIZONA

Revision 1
April 2012

TABLE OF CONTENTS

<u>DRAWING NO.</u>	<u>DESCRIPTION</u>
D14789-01	Reactivation Facility Site Plan
D14789-02	Reactivation Facility Equipment Arrangement
D14789-03	Reactivation Facility Site View Overall Arrangements
D14789-04	Reactivation Facility Overall Arrangements
D14789-08	Reactivation Facility Site Plan
1541-CM-001	Site Contour Map
1478-P-001	Plan Views
1478-P-002	Plan Views
1478-P-003	Plan Views
1478-P-004	Elevation Looking North
1478-P-005	Elevation Looking West



NOTES:
1. THIS DRAWING INCLUDES COMPONENTS OF THE FACILITY THAT ARE EXEMPT FROM PERMITTING UNDER VARIOUS PROVISIONS OF RCRA. DATA RELATED TO THESE COMPONENTS IS PROVIDED FOR INFORMATIONAL PURPOSES AND EASE OF REVIEW ONLY, AND THEY ARE NOT INTENDED TO BECOME REGULATED COMPONENTS OF THE HAZARDOUS WASTE FACILITY.

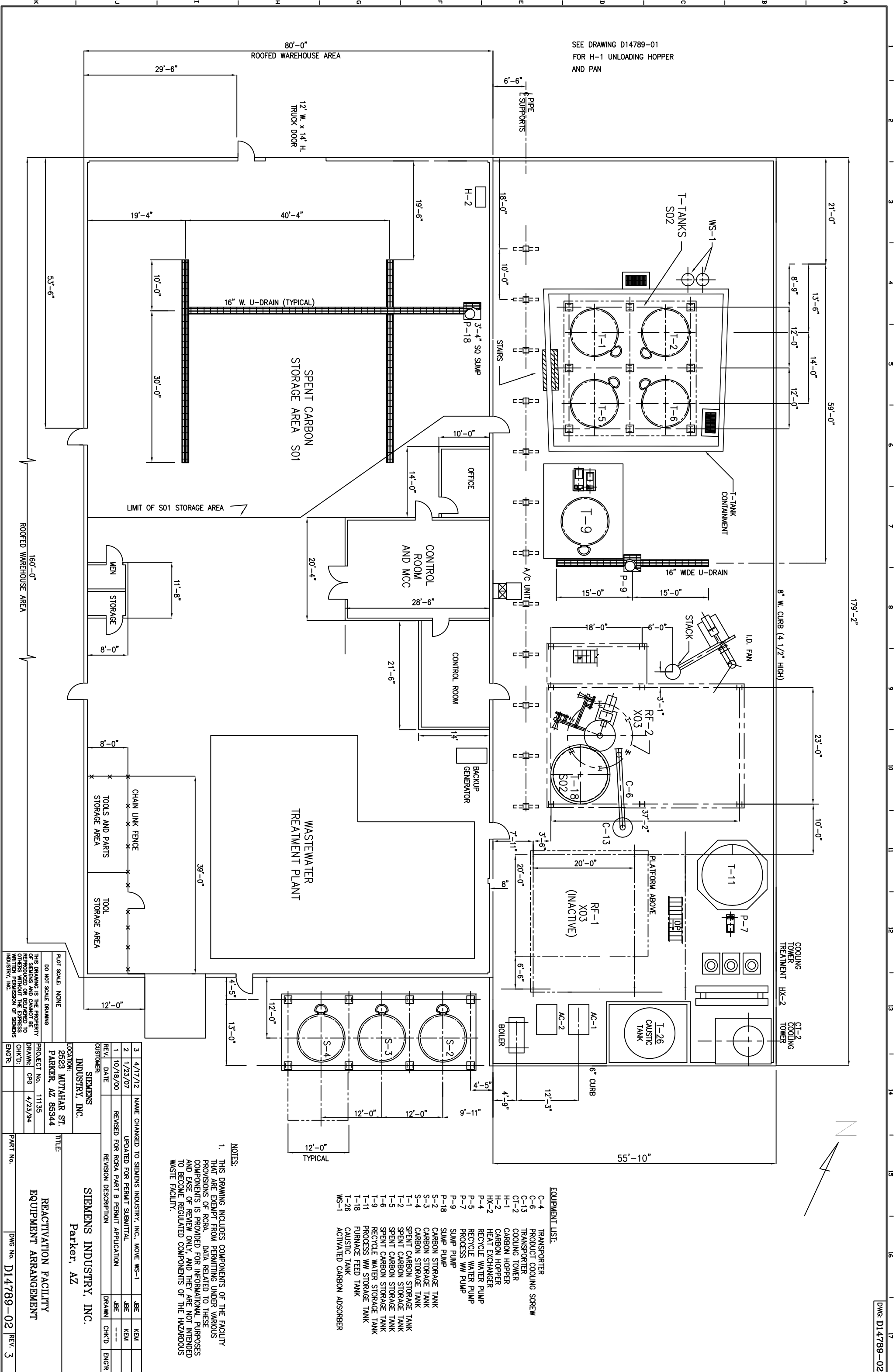
4	3/16/12	NAME CHANGED TO SIEMENS INDUSTRY, INC.	JBE	KEM	
3	1/25/07	UPDATED FOR PERMIT SUBMITTAL	JBE	KEM	
A	06/21/02	REMOVED DUMPSTER PAD	OPG	KEM	
1	10/18/00	REVISED FOR RCRA PART B PERMIT APPLICATION	JBE	---	
REV.	DATE	REVISION DESCRIPTION	DRAWN	CHK'D	ENGR

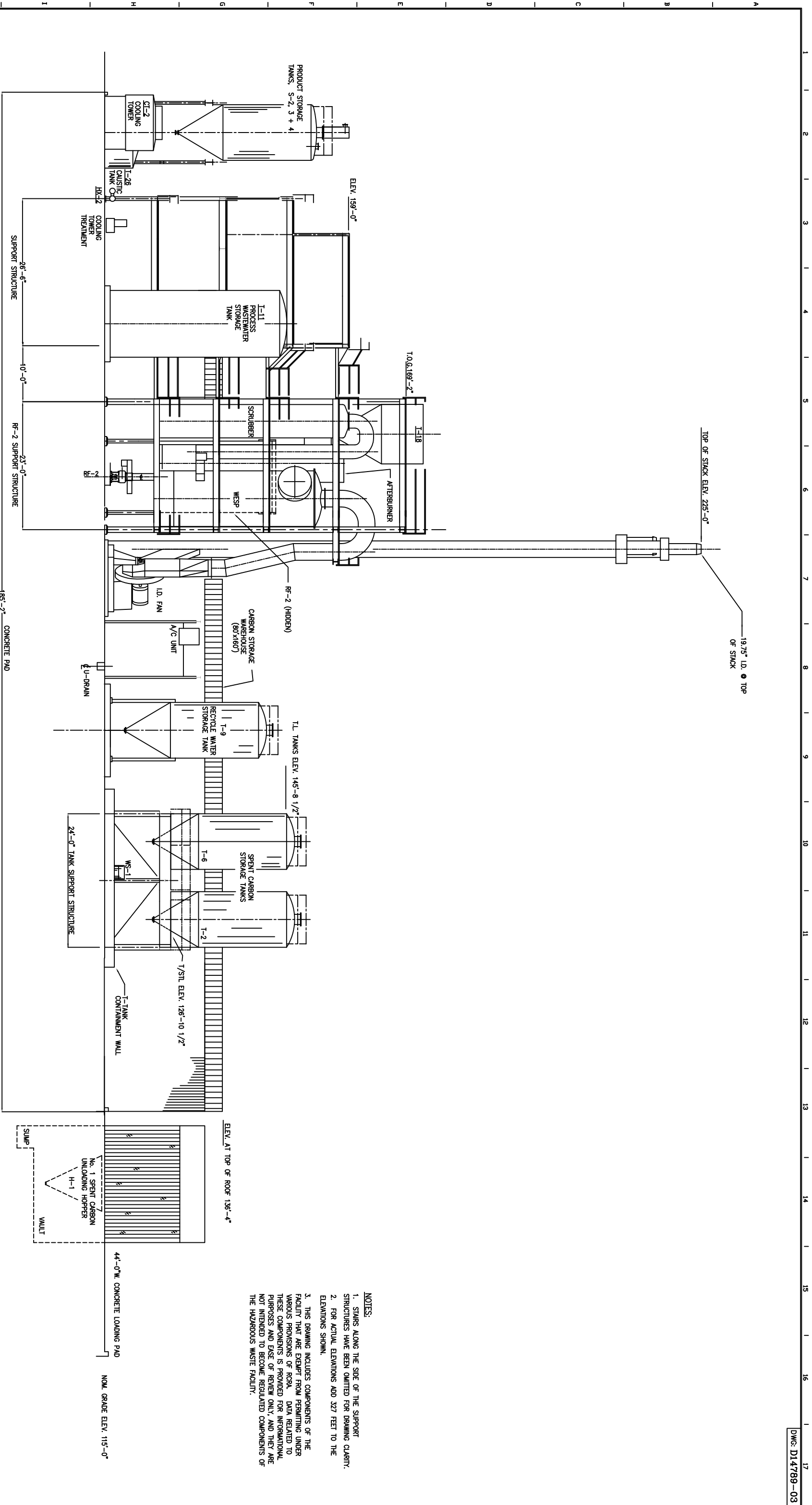
CUSTOMER:	SIEMENS INDUSTRY, INC.
LOCATION:	2523 MUTAHAR ST., PARKER, AZ 85344
TITLE:	SIEMENS INDUSTRY, INC. Reactivation Facility Parker, AZ SITE PLAN

PROJECT No.	PARKER, AZ 85344
DRAWN:	OPG
CHK'D:	5/16/94
ENGR:	
PLOT SCALE:	NONE
DO NOT SCALE DRAWING	
THIS DRAWING IS THE PROPERTY OF SIEMENS INDUSTRY, INC. IT IS TO BE USED ONLY FOR THE PROJECT AND SITE SPECIFICALLY IDENTIFIED HEREON. IT IS NOT TO BE REPRODUCED OR DELIVERED TO OTHERS WITHOUT THE EXPRESS WRITTEN PERMISSION OF SIEMENS INDUSTRY, INC.	

PART No.	DWG No.	REV
	D14789-01	4

SEE SITE PLAN
DRAWING D14789-08





NOTES:

1. STAIRS ALONG THE SIDE OF THE SUPPORT STRUCTURES HAVE BEEN OMITTED FOR DRAWING CLARITY.

2. FOR ACTUAL ELEVATIONS ADD 327 FEET TO THE ELEVATIONS SHOWN.

3. THIS DRAWING INCLUDES COMPONENTS OF THE FACILITY THAT ARE EXEMPT FROM PERMITTING UNDER VARIOUS PROVISIONS OF RCRA. DATA RELATED TO THESE COMPONENTS IS PROVIDED FOR INFORMATIONAL PURPOSES AND EASE OF REVIEW ONLY, AND THEY ARE NOT INTENDED TO BECOME REGULATED COMPONENTS OF THE HAZARDOUS WASTE FACILITY.

OVERALL SITE VIEW LOOKING SOUTHWEST

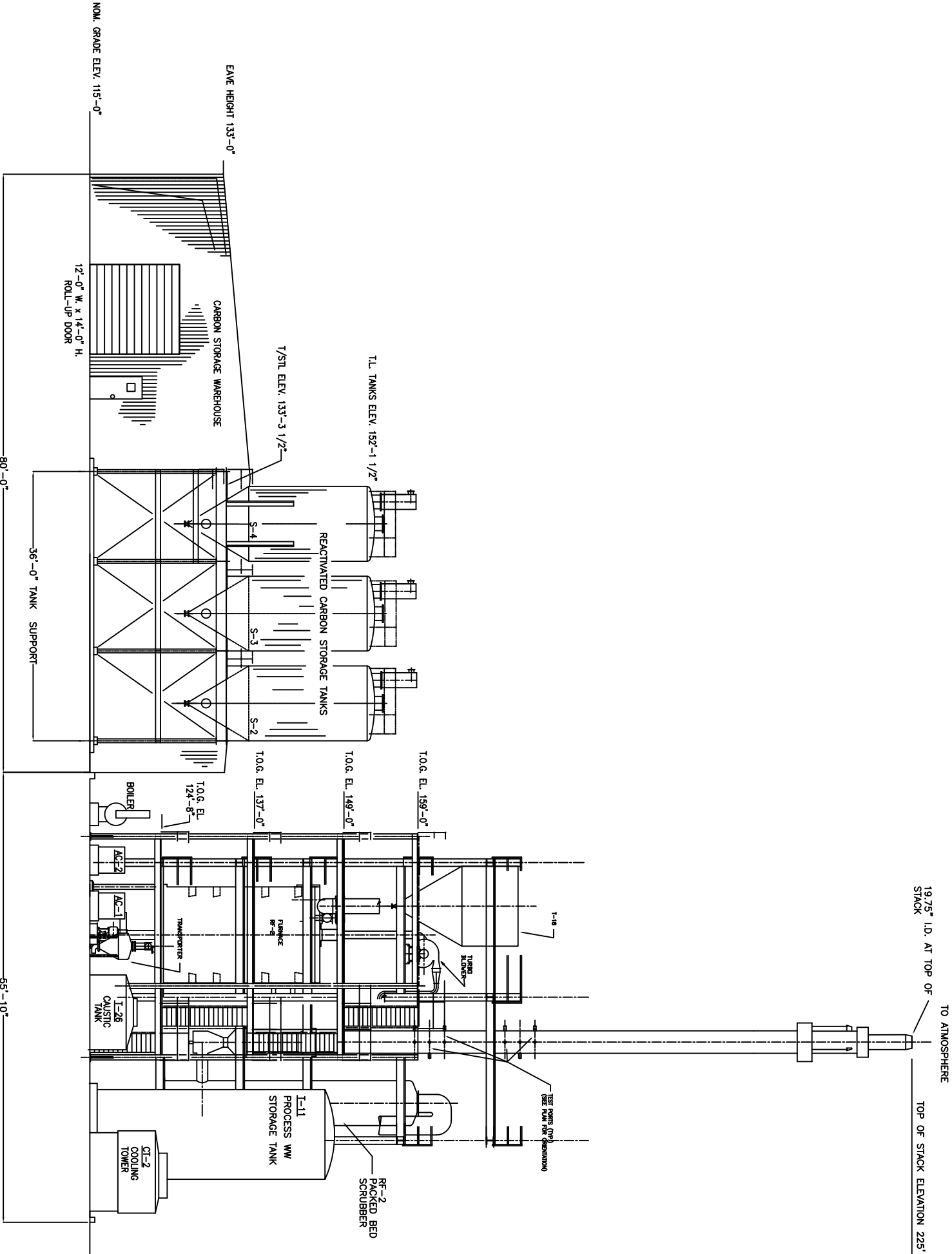
3	3/16/12	NAME CHANGED TO SIEMENS INDUSTRY, INC.	JBE	KEM	
2	1/18/07	UPDATED FOR PERMIT SUBMITTAL	JBE	KEM	
1	7/24/02	REVISED FOR RCRA PART B PERMIT APPLICATION	CPG	KEM	
REV.	DATE	REVISION DESCRIPTION	DRAWN	CHK'D	ENGR

CUSTOMER:		SIEMENS INDUSTRY, INC.			
LOCATION:		2523 MUTAHAR ST. PARKER, AZ 85344			
PROJECT No.		PARKER, AZ 85344			
DRAWN:		CPG			
CHK'D:		4/21/94			
ENGR:					

TITLE:		SIEMENS INDUSTRY, INC.			
PROJECT No.		2523 MUTAHAR ST. PARKER, AZ 85344			
DRAWN:		CPG			
CHK'D:		4/21/94			
ENGR:					

PLOT SCALE: NONE	
DO NOT SCALE DRAWING	
THIS DRAWING IS THE PROPERTY OF SIEMENS, AND CANNOT BE REPRODUCED OR DELIVERED TO OTHERS WITHOUT THE EXPRESS WRITTEN PERMISSION OF SIEMENS INDUSTRY, INC.	

PARKER, AZ 85344		REACTIVATION FACILITY	
PARKER, AZ 85344		SITE VIEW	
PARKER, AZ 85344		OVERALL ARRANGEMENTS	

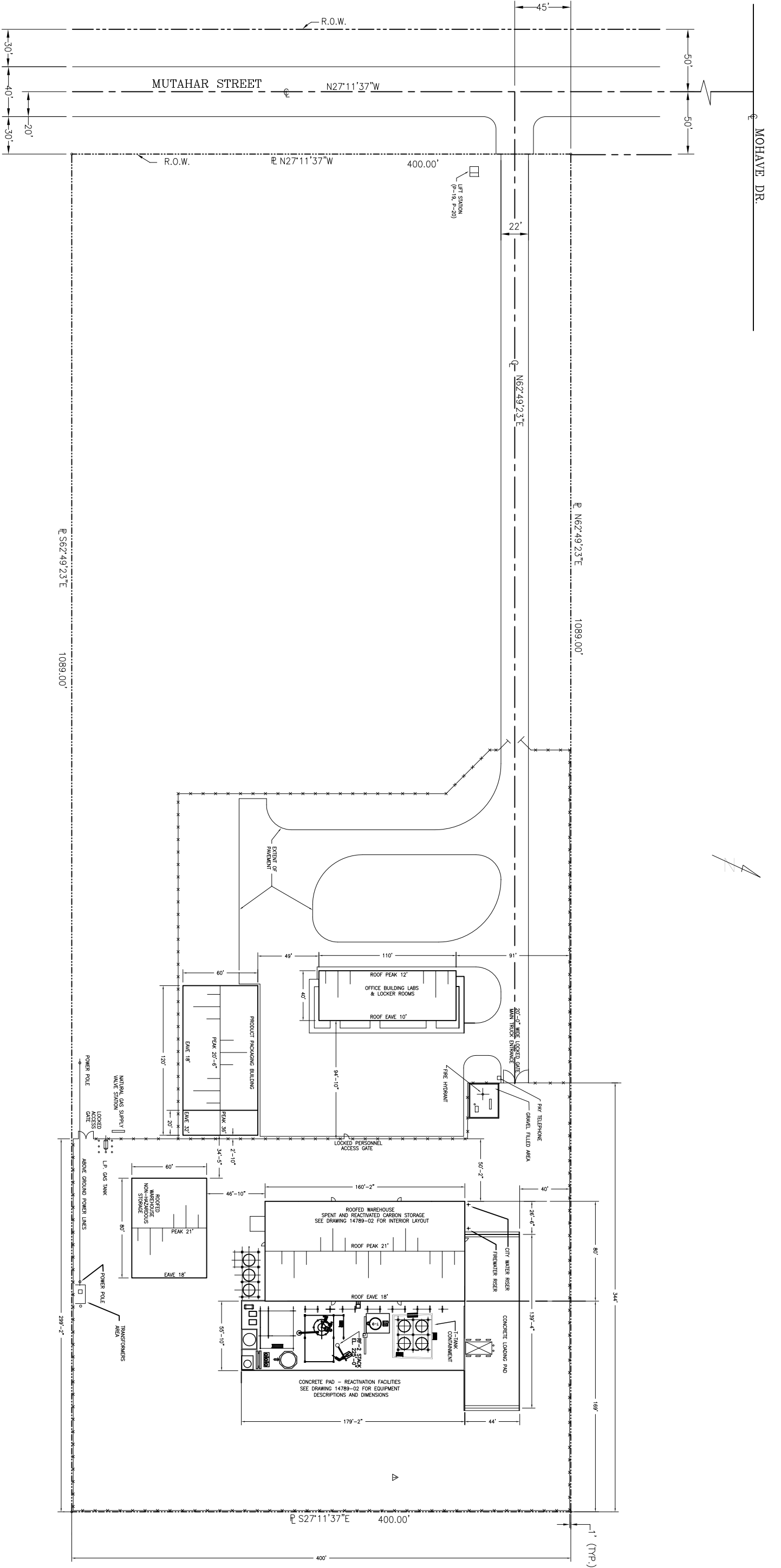


OVERALL SITE VIEW LOOKING NORTHWEST

- NOTES:
- THIS DRAWING INCLUDES COMPONENTS OF THE FACILITY THAT ARE EXEMPT FROM PERMITTING UNDER VARIOUS PROVISIONS OF RCRA. DATA RELATED TO THESE COMPONENTS IS PROVIDED FOR INFORMATIONAL PURPOSES AND EASE OF REVIEW ONLY, AND THEY ARE NOT INTENDED TO BECOME REGULATED COMPONENTS OF THE HAZARDOUS WASTE FACILITY.
 - FOR ACTUAL ELEVATIONS ADD 327 FEET TO THE ELEVATIONS SHOWN.

3	3/16/12	NAME CHANGED TO SIEMENS INDUSTRY, INC.	JBE	KEM	
2	1/16/07	UPDATED FOR PERMIT SUBMITTAL	JBE	KEM	
1	7/16/02	REVISED FOR RCRA PART B PERMIT APPLICATION	STA	KEM	
REV.	DATE	REVISION DESCRIPTION	DRAWN	CHK'D	ENGR

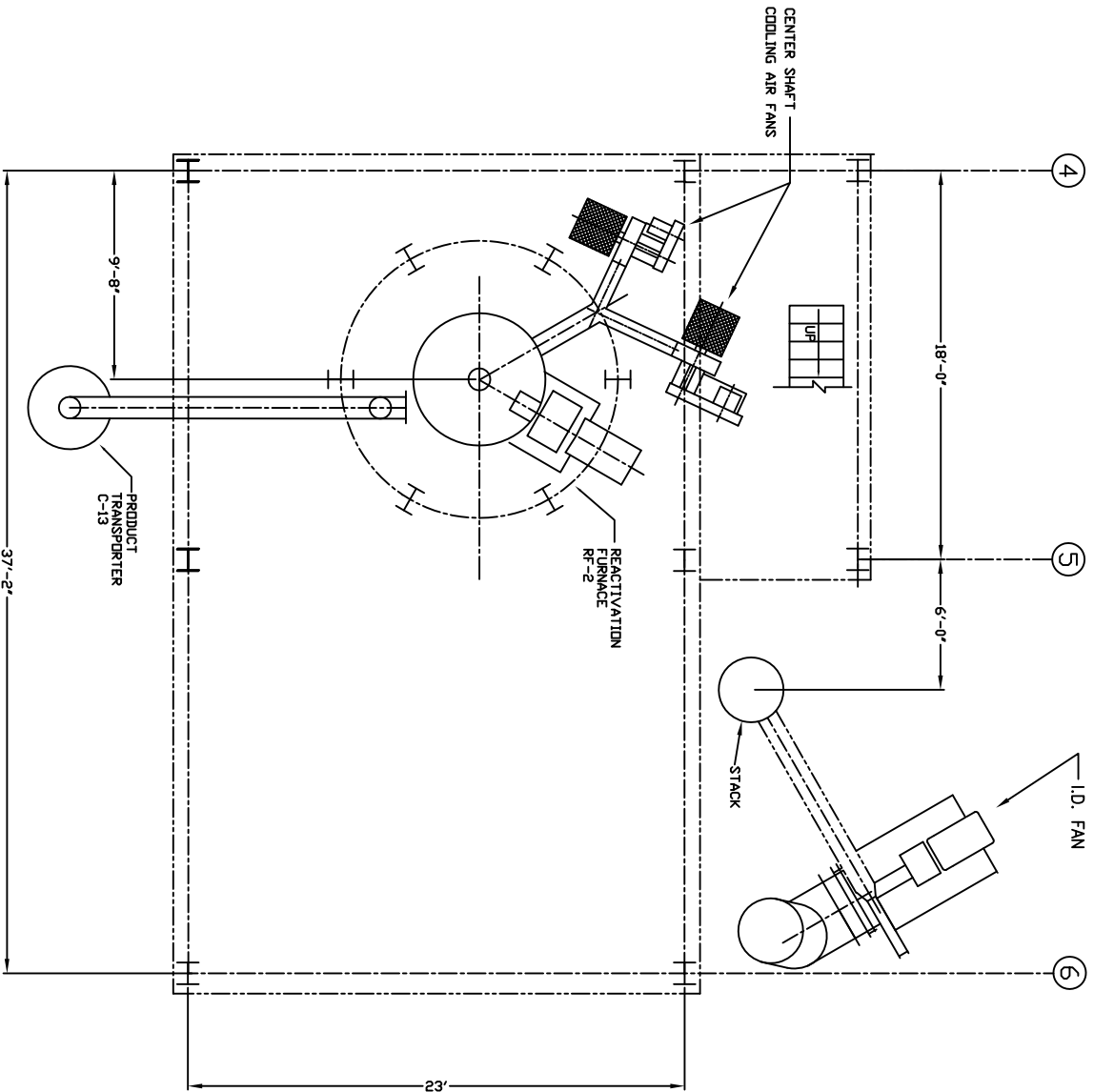
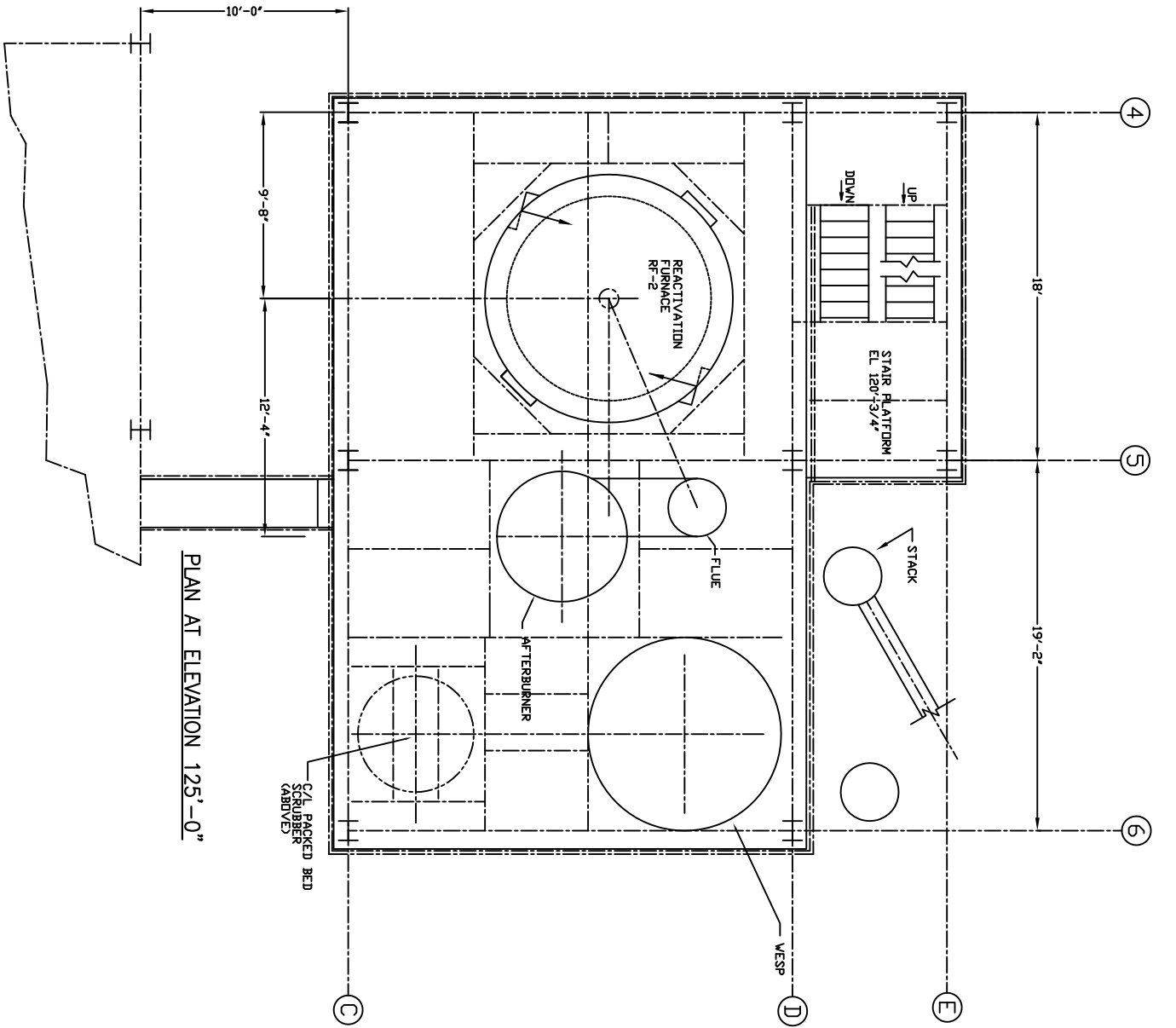
CUSTOMER: SIEMENS INDUSTRY, INC.			SIEMENS INDUSTRY INC. Parker, AZ		
LOCATION: 2523 MUTAHAR ST. PARKER, AZ 85344			TITLE: REACTIVATION FACILITY OVERALL ARRANGEMENTS		
PLOT SCALE: NONE			PROJECT No.	11135	
DO NOT SCALE DRAWING			DRAWN:	CPG	4/21/94
THIS DRAWING IS THE PROPERTY OF SIEMENS AND CANNOT BE REPRODUCED OR DELIVERED TO OTHERS WITHOUT THE EXPRESS WRITTEN PERMISSION OF SIEMENS INDUSTRY, INC.			CHK'D:		
			ENGR:		
			PART No.	DWG No.	D14789-04
					REV. 3



NOTES:

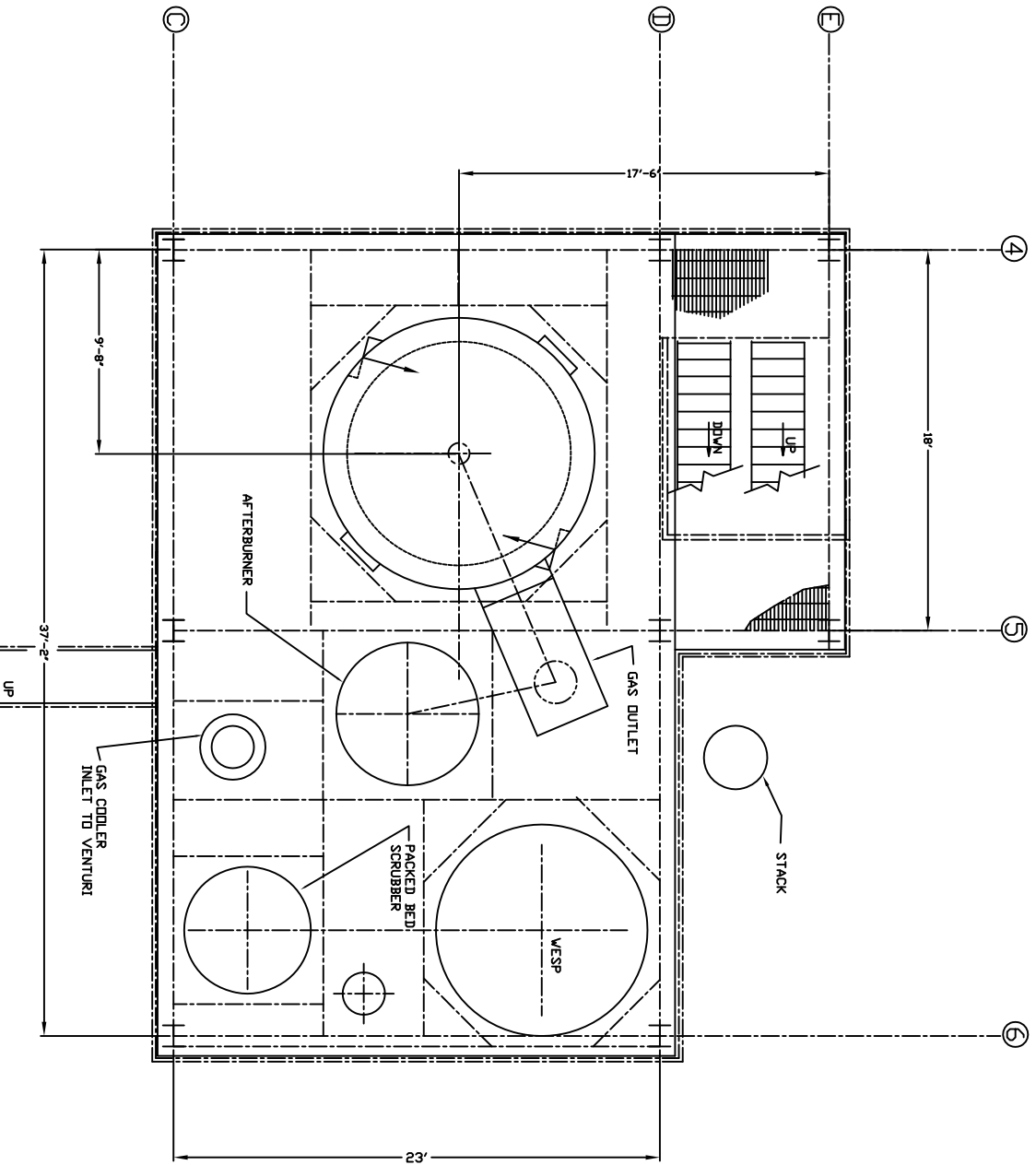
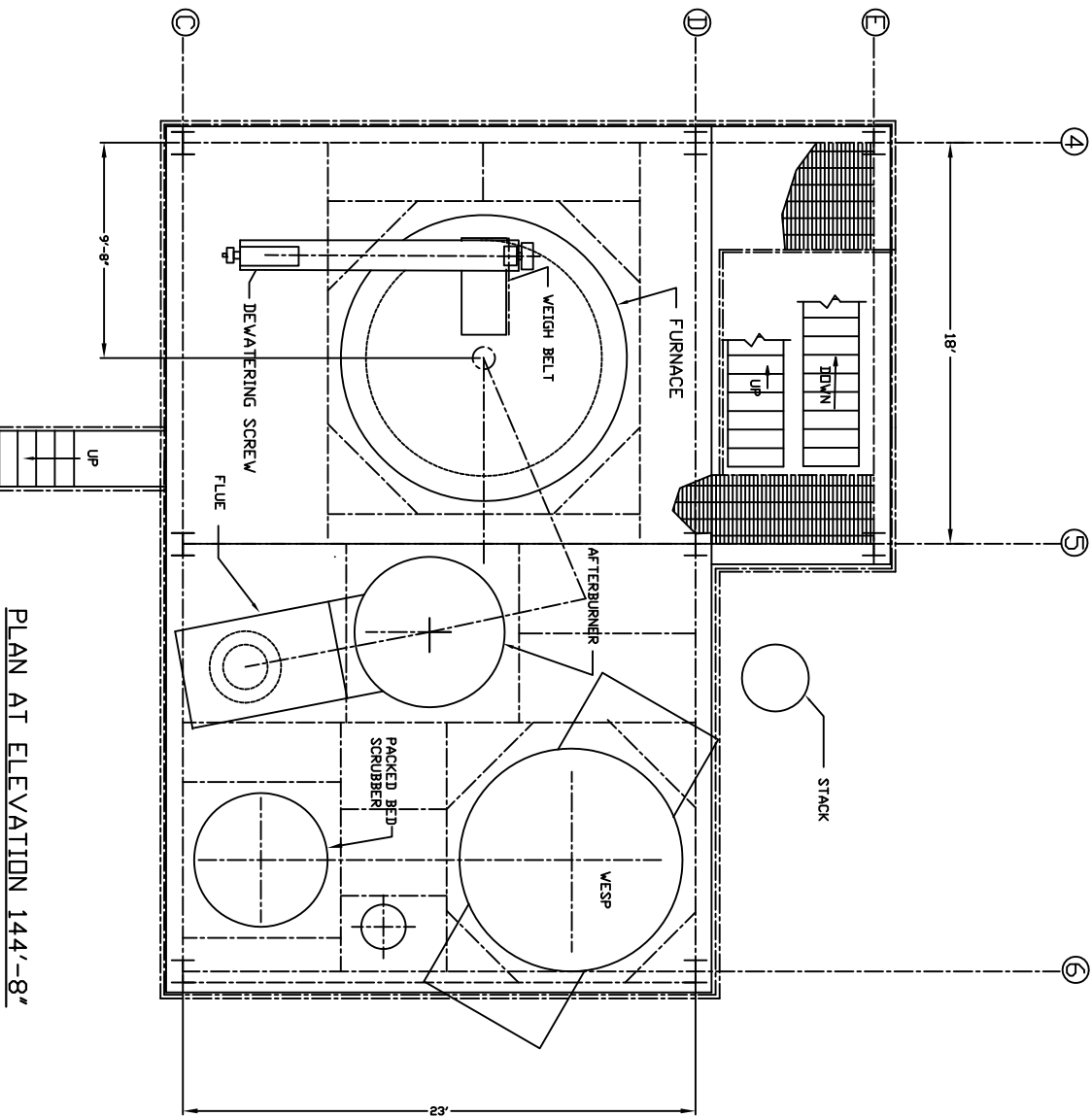
1. THIS DRAWING INCLUDES COMPONENTS OF THE FACILITY THAT ARE EXEMPT FROM PERMITTING UNDER VARIOUS PROVISIONS OF RCRA. DATA RELATED TO THESE COMPONENTS IS PROVIDED FOR INFORMATIONAL PURPOSES AND EASE OF REVIEW ONLY, AND THEY ARE NOT INTENDED TO BECOME REGULATED COMPONENTS OF THE HAZARDOUS WASTE FACILITY.

3	3/16/12	NAME CHANGED TO SIEMENS INDUSTRY, INC.	JBE	KEM
2	1/18/07	UPDATED FOR PERMIT SUBMITTAL	JBE	KEM
Δ	6/21/02	REMOVED DUMPSITE PAD	CPG	KEM
REV.	DATE	REVISION DESCRIPTION	DRAWN	CHK'D
CUSTOMER:		SIEMENS INDUSTRY, INC.	CHK'D	ENGR
LOCATION:		SIEMENS INDUSTRY, INC.		
		2523 MUTAHAR ST.		
		PARKER, AZ 85344		
PROJECT NO.		TITLE:		
DRAWN: CPG		3/01/02	REACTIVATION FACILITY	
CHK'D: KEM		3/01/02	SITE PLAN	
ENGR:			PART No.	
			DWG No. D14789-08	
			REV. 3	



- NOTES:
- THIS DRAWING INCLUDES COMPONENTS OF THE FACILITY THAT ARE EXEMPT FROM PERMITTING UNDER VARIOUS PROVISIONS OF RCRA. DATA RELATED TO THESE COMPONENTS IS PROVIDED FOR INFORMATIONAL PURPOSES AND EASE OF REVIEW ONLY, AND THEY ARE NOT INTENDED TO BECOME REGULATED COMPONENTS OF THE HAZARDOUS WASTE FACILITY.

1	JBE	KEM	NAME CHANGED TO SIEMENS INDUSTRY	3/15/12
NO	DWN	CK'D	APP	DATE
REVISIONS				
CBE CHAYOND-BARRY ENGINEERING CORP.				
400 Route 518 • P.O. Box 205 • Blairstown, New Jersey 08504				
SIEMENS INDUSTRY, INC.				
2523 MUTAHAR STREET, PARKER, AZ 85344				
CARBON REGENERATION SYSTEM				
PLAN VIEWS				
DRAWN	DATE	CHECKED	DATE	APPROVED
CPG	5/12/94	KEM	5/13/94	
SCALE	DWG. NO.			REV.
1/4"=1'-0"	1478-P-001			1



PLAN AT ELEVATION 144'-8'

PLAN AT ELEVATION 135'-8'

- NOTES:
- THIS DRAWING INCLUDES COMPONENTS OF THE FACILITY THAT ARE EXEMPT FROM PERMITTING UNDER VARIOUS PROVISIONS OF RCRA. DATA RELATED TO THESE COMPONENTS IS PROVIDED FOR INFORMATIONAL PURPOSES AND EASE OF REVIEW ONLY, AND THEY ARE NOT INTENDED TO BECOME REGULATED COMPONENTS OF THE HAZARDOUS WASTE FACILITY.

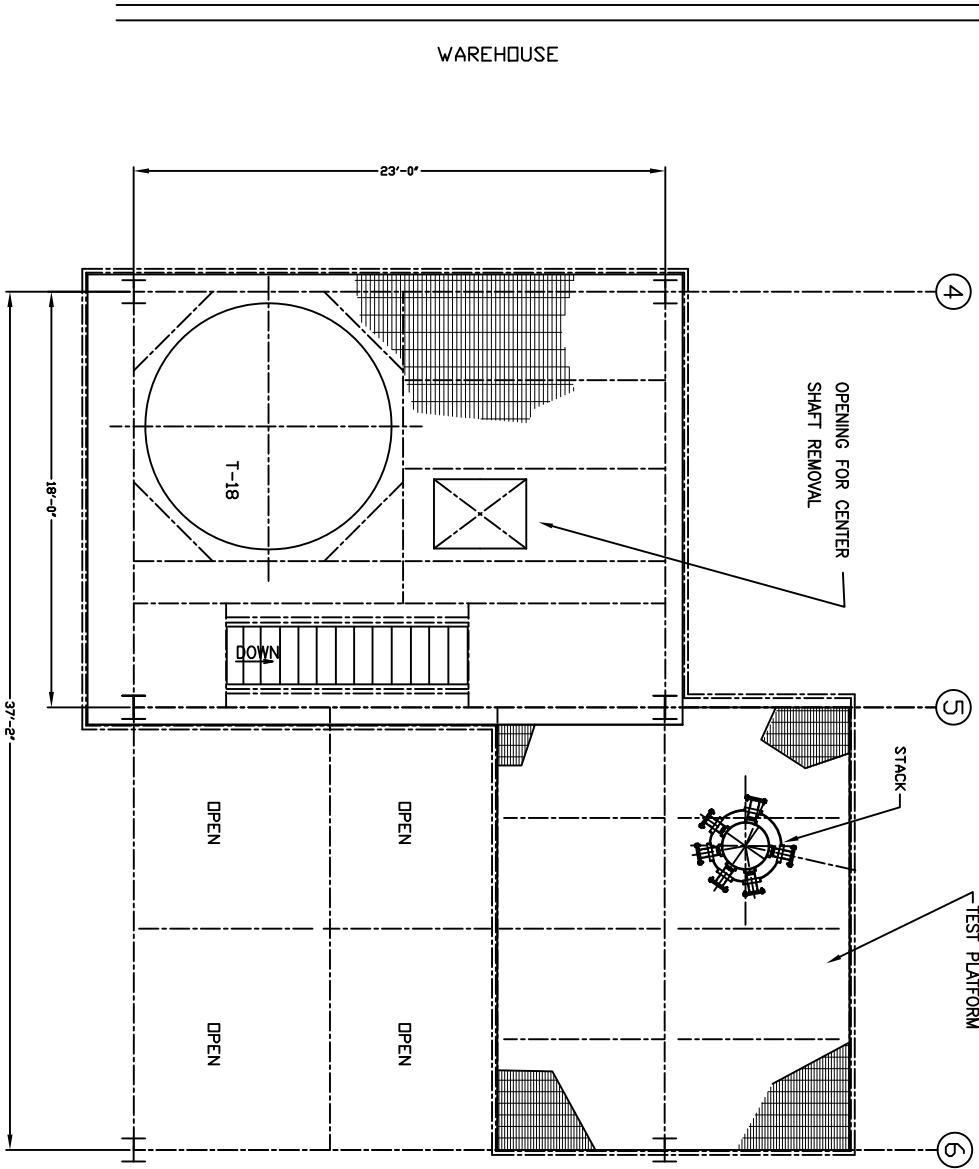
1	JBK	KEM	APP	NAME CHANGED TO SIEMENS INDUSTRY	3/15/12
NO	EDN	OK'D		REVISIONS	DATE
CBE CHAVOND-BARRY ENGINEERING CORP.					
440 Route 518 • P.O. Box 285 • Blairstown, New Jersey 08504					

SIEMENS INDUSTRY, INC.
2523 MUTAHAR STREET, PARKER, AZ 85344
CARBON REGENERATION SYSTEM

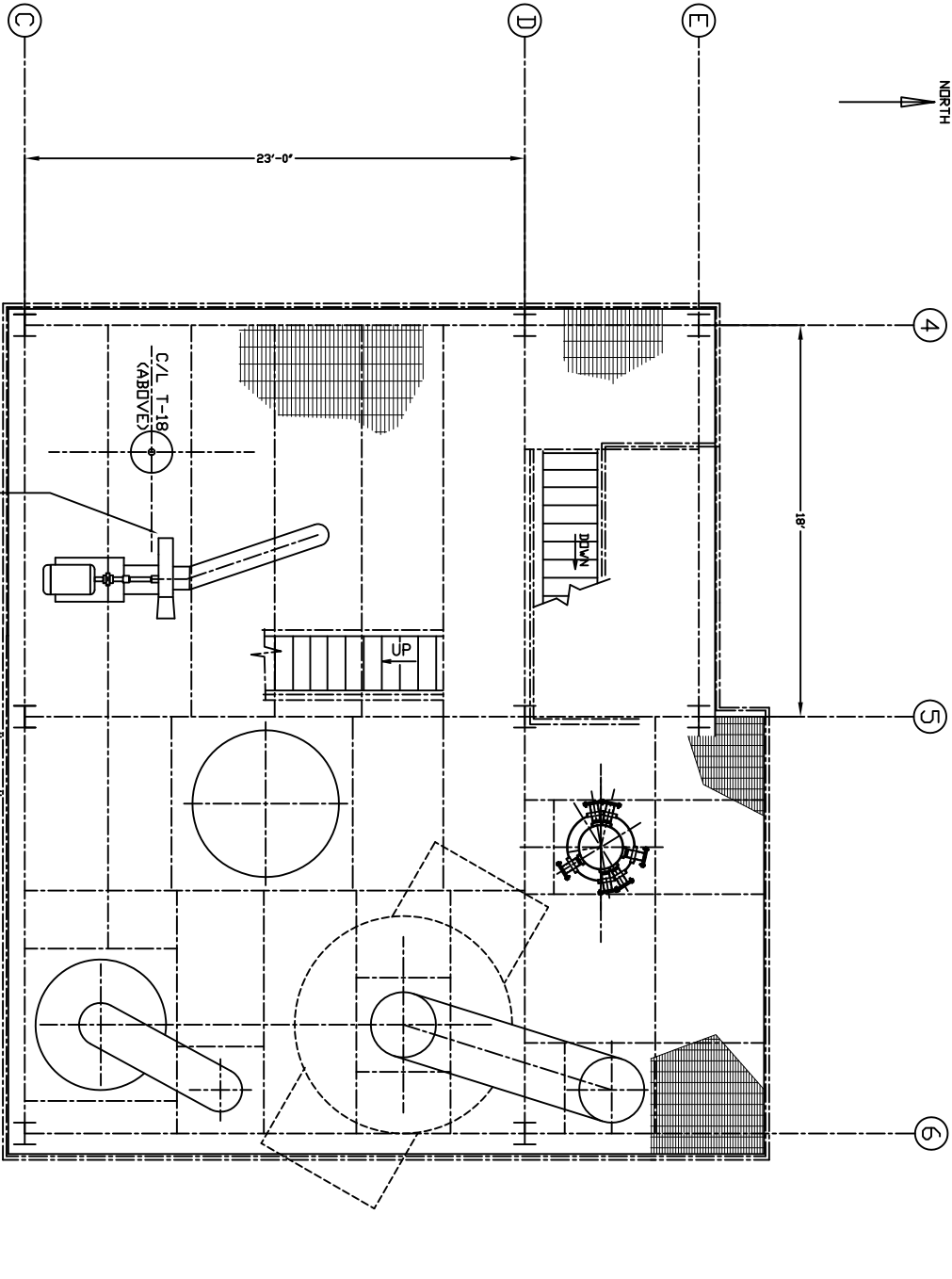
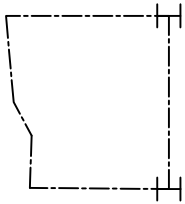
PLAN VIEWS

DRAWN	DATE	CHECKED	DATE	APPROVED	DATE
CPG	5/12/94	KEM	5/13/94		

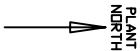
SCALE	DWG. NO.	REV.
1/4"=1'-0"	1478-P-002	1



PLAN AT T.O.G. ELEVATION 169'-2"



PLAN AT T.O.G. ELEVATION 157'-2"

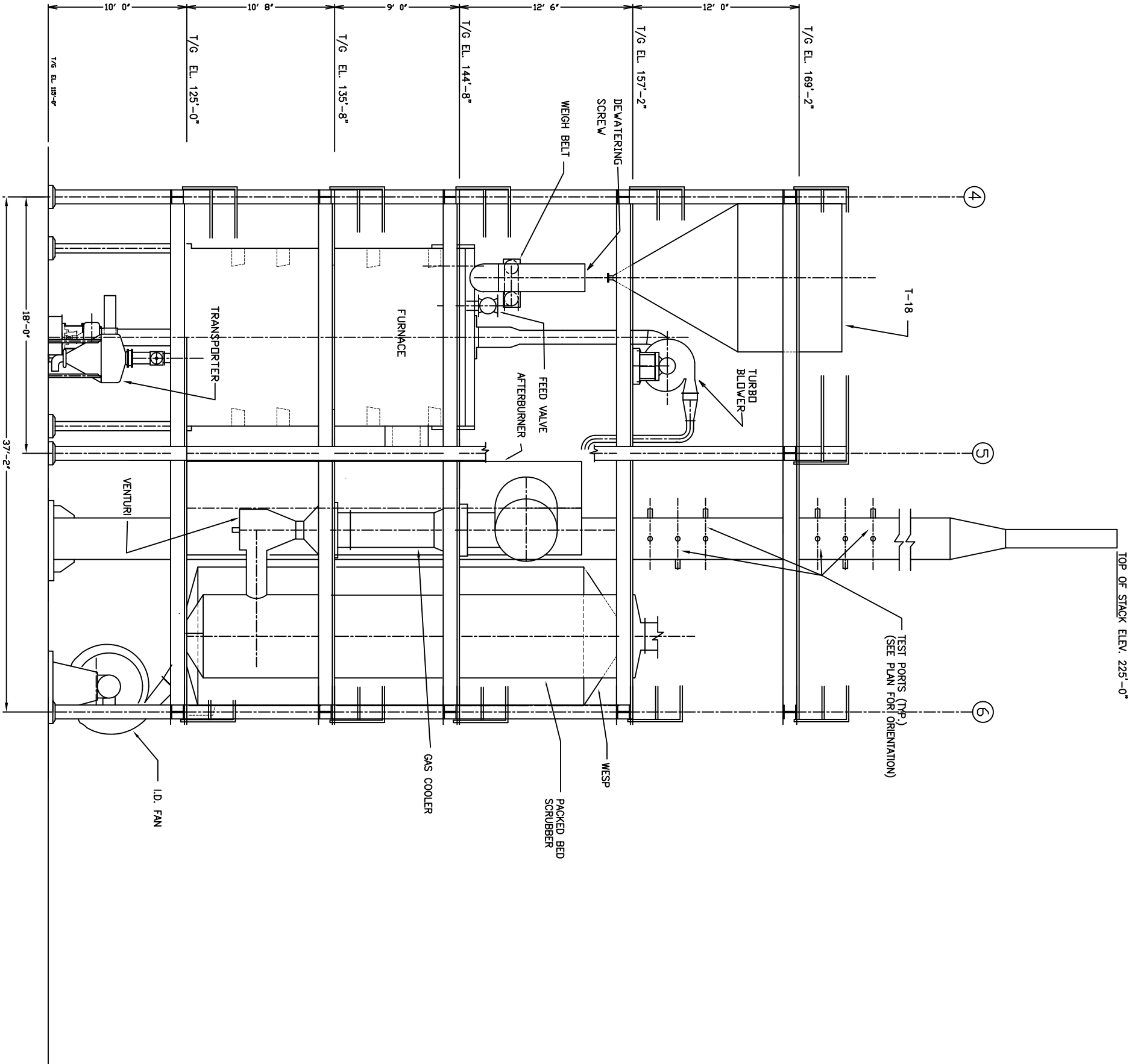


- NOTES:
- THIS DRAWING INCLUDES COMPONENTS OF THE FACILITY THAT ARE EXEMPT FROM PERMITTING UNDER VARIOUS PROVISIONS OF RCRA. DATA RELATED TO THESE COMPONENTS IS PROVIDED FOR INFORMATIONAL PURPOSES AND EASE OF REVIEW ONLY, AND THEY ARE NOT INTENDED TO BECOME REGULATED COMPONENTS OF THE HAZARDOUS WASTE FACILITY.



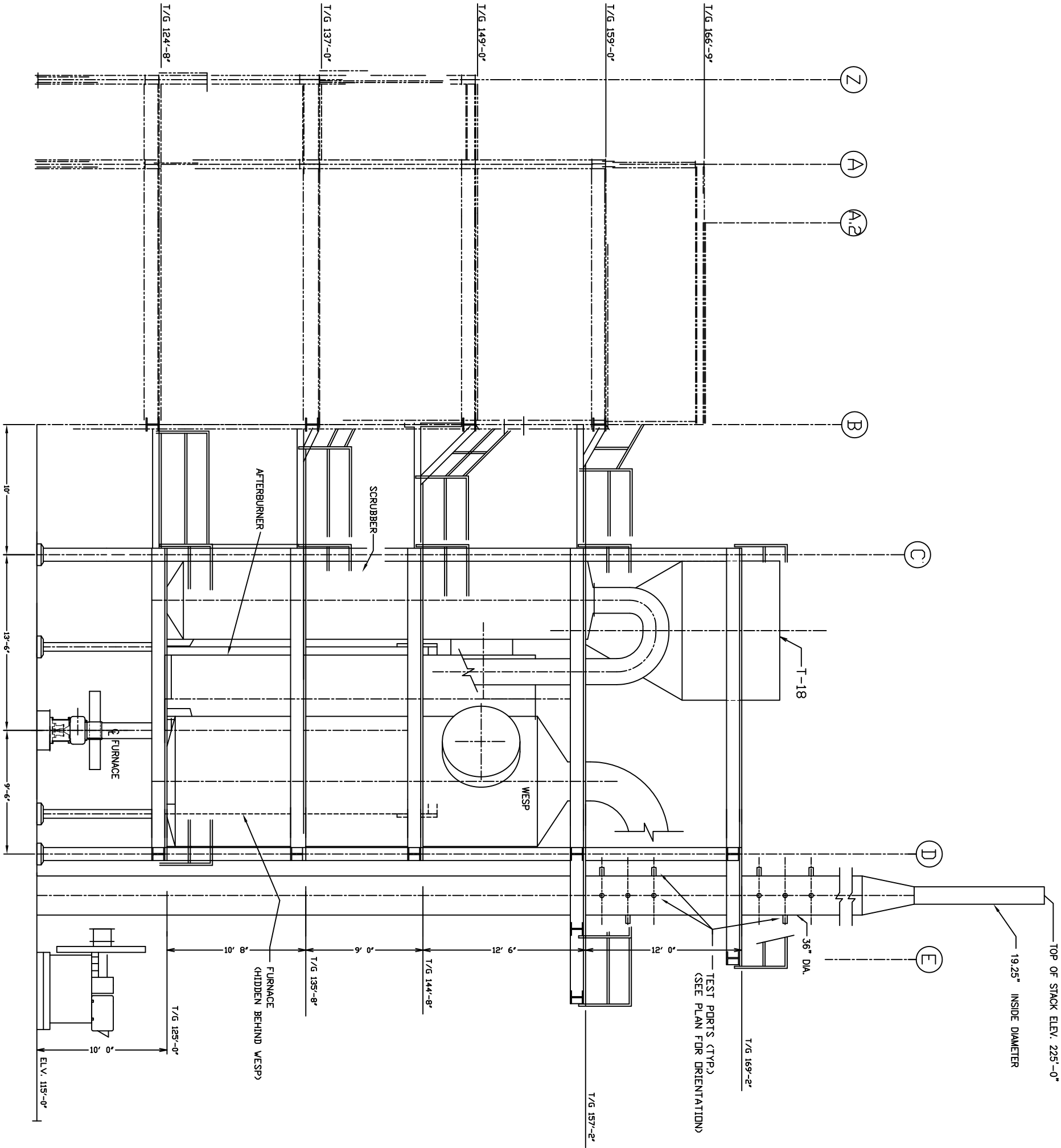
1	JBE	KEM	NAME	CHANGED TO	SIEMENS INDUSTRY	3/15/12
NO	DWN	OK'D	APP	REVISIONS	DATE	
CBE CHAYOND-BARRY ENGINEERING CORP.						
400 Route 518 • P.O. Box 205 • Bloemhousburg, New Jersey 08504						
SIEMENS INDUSTRY, INC.						
2523 MUTAHAR STREET, PARKER, AZ 85344						
CARBON REGENERATION SYSTEM						

PLAN VIEWS			
DRAWN	DATE	CHECKED	DATE
CPG	5/12/94	KEM	5/13/94
SCALE	DWG. NO.	REV.	
1/4"=1'-0"	1478-P-003	1	



- NOTES:
- THIS DRAWING INCLUDES COMPONENTS OF THE FACILITY THAT ARE EXEMPT FROM PERMITTING UNDER VARIOUS PROVISIONS OF RCRA. DATA RELATED TO THESE COMPONENTS IS PROVIDED FOR INFORMATIONAL PURPOSES AND EASE OF REVIEW ONLY, AND THEY ARE NOT INTENDED TO BECOME REGULATED COMPONENTS OF THE HAZARDOUS WASTE FACILITY.
 - FOR ACTUAL ELEVATIONS ADD 327 FEET TO THE ELEVATIONS SHOWN.

1	JBE	KEM				
NO	DWN	CR'D	APP	NAME CHANGED TO SIEMENS INDUSTRY		3/15/12
				REVISIONS		DATE
CBE CHAYOND-BARRY ENGINEERING CORP.						
400 Route 518 • P.O. Box 205 • Bloomington, New Jersey 08504						
SIEMENS INDUSTRY, INC.						
2523 MUTAHAR STREET, PARKER, AZ 85344						
CARBON REGENERATION SYSTEM						
ELEVATION LOOKING NORTH						
DRAWN		CHECKED		APPROVED		
DATE		DATE		DATE		
CPG	5/12/94	KEM	5/13/94			
SCALE	DWG. NO.					
1/4"=1'-0"	1478-P-004				REV.	1



- NOTES:
- THIS DRAWING INCLUDES COMPONENTS OF THE FACILITY THAT ARE EXEMPT FROM PERMITTING UNDER VARIOUS PROVISIONS OF RCRA. DATA RELATED TO THESE COMPONENTS IS PROVIDED FOR INFORMATIONAL PURPOSES AND EASE OF REVIEW ONLY, AND THEY ARE NOT INTENDED TO BECOME REGULATED COMPONENTS OF THE HAZARDOUS WASTE FACILITY.
 - STARS ALONG THE SIDE OF THE SUPPORT STRUCTURES HAVE BEEN OMITTED FOR DRAWING CLARITY.
 - FOR ACTUAL ELEVATIONS ADD 327 FEET TO THE ELEVATIONS SHOWN.

1	JBE	KEM		NAME CHANGED TO SIEMENS INDUSTRY	3/15/12
NO.	DWG.	CK'D	APP.	REVISIONS	DATE
CBE CHAYOND-BARRY ENGINEERING CORP. 400 Route 518 • P.O. Box 205 • Bloomington, New Jersey 08504					
SIEMENS INDUSTRY, INC. 2523 MUTAHAR STREET, PARKER, AZ 85344 CARBON REGENERATION SYSTEM					
ELEVATION LOOKING WEST					
DRAWN		CHECKED		APPROVED	
CPG		DATE		DATE	
5/12/94		KEM		5/13/94	
SCALE		DWG. NO.		REV.	
1/4" = 1'-0"		1478-P-005		1	