
PERMIT ATTACHMENT

APPENDIX VI

PROCESS FLOW DIAGRAMS AND PIPING AND INSTRUMENTATION DIAGRAMS

This document was not altered from the April 2016 Application.

September 2018

APPENDIX VI

PROCESS FLOW DIAGRAMS AND PIPING AND
INSTRUMENTATION DIAGRAMS

FOR

SIEMENS INDUSTRY, INC.

PARKER REACTIVATION FACILITY

PARKER, ARIZONA

Revision 1
April 2012

TABLE OF CONTENTS

<u>DRAWING NO.</u>	<u>DESCRIPTION</u>
PC-1466-PR-003	Vapor Phase Carbon Process Flow Diagram Balance for RF-2
PC-1466-PR-004	Liquid Phase Carbon Process Flow Diagram Balance for RF-2
D11135-200	Reactivation Facility Legend & Speciality Items Piping & Instrumentation Diagram
D11135-201	Reactivation Facility Spent Carbon Storage / H-1 Piping & Instrumentation Diagram
D11135-202	Reactivation Facility Spent Carbon Storage / H-2 Piping & Instrumentation Diagram
D11135-203	Reactivation Facility Recycle Water Piping & Instrumentation Diagram
D11135-205	Reactivation Facility Process Water Discharge to POTW Piping & Instrumentation Diagram
D11135-210	Reactivation Facility Reactivated Carbon Storage Piping & Instrumentation Diagram
D11135-211	Reactivation Facility Utilities – NG – PW - STM Piping & Instrumentation Diagram
D11135-212	Reactivation Facility Utilities – Compressed Air Piping & Instrumentation Diagram
D11135-213	Reactivation Facility Furnace #2 Feed System Piping & Instrumentation Diagram
D11135-214	Reactivation Reactivation Furnace #2 Piping & Instrumentation Diagram
D11135-215	Reactivation Furnace #2 Product Handling Piping & Instrumentation Diagram
D11135-216	Reactivation Facility Furnace #2 Off Gas Scrubber Piping & Instrumentation Diagram

D11135-217	Reactivation Facility Furnace #2 Precipitator & Exhaust Piping & Instrumentation Diagram
D11135-218	Reactivation Facility Product Handling System Piping & Instrumentation Diagram

INSTRUMENT I.D. LETTERS

LETTER	VARIABLE TYPES	FUNCTION CODES
A	ANALYSIS	ALARM
B	BURNER FLAME	BYPASS
C		CONTROLLER
D		DIFFERENTIAL
E	VOLTAGE	ELEMENT (PRIMARY)
F	FLUID	RATIO (GRACTION)
G	GAUGING (DIMENSIONS)	GLASS/GAUGE
H	HAND ACTUATED	HIGH
I	CURRENT	INDICATOR
J	POWER (WATTS)	MULTIPOINT (SPAND
K	TIME	CONTROL STATION
L	LEVEL	LIGHT/LDW
M		MIDDLE
N		
D		DRIFTC (RESTRICTION)
P	PRESSURE/VACUUM	POINT
Q	QUANTITY/NUMBER	TOTALIZER
R	RUN	RECORDER
S	SPEED/FREQUENCY	SAFETY/SWITCH
T	TEMPERATURE	TRANSMITTER
U	MULTIVARIABLE	HALFUNCTION
V	VIBRATION	VALVE
W	WEIGHT	WELL
X	UNCLASSIFIED	SHUTDOWN/INTERLOCK
Y	EVENT	RELAY
Z	POSITION	DRIVE/ACTUATE

PARKER PERMIT APPLICATION
DRAWING INDEX

- D11135-200

- LEGEND & SPECIALTY ITEMS
- D11135-201

- SPENT CARBON STORAGE / H-1
- D11135-202

- SPENT CARBON STORAGE / H-2
- D11135-203

- RECYCLE WATER
- D11135-205

- PROCESS WATER DISCHARGE TO POTW
- D11135-211

- UTILITIES - PV - NG - STM
- D11135-213

- FURNACE # 2 FEED SYSTEM
- D11135-214

- REACTIVATION FURNACE # 2
- D11135-215

- FURNACE # 2 PRODUCT HANDLING SYSTEM
- D11135-216

- FURNACE # 2 DFG GAS SCRUBBER
- D11135-217

- FURNACE # 2 PROCESS WATER

INSTRUMENT SYMBOLS



= PLC I/O



= OPERATOR INTERFACE

{-----} = INSTRUMENT HARDWIRED SIGNAL

{---●---●---●---} = INSTRUMENT SOFTWARE INTERCONNECT

{#---#---#---#} = INSTRUMENT PNEUMATIC SIGNAL



= INTERLOCK IDENTIFIER



= FIELD INSTRUMENT



= PANEL INSTRUMENT
ACCESSIBLE TO OPERATOR



= PANEL INSTRUMENT
NOT NORMALLY
ACCESSIBLE TO OPERATOR

NOTE:

THIS DRAWING INCLUDES COMPONENTS OF THE FACILITY THAT ARE EXEMPT FROM PERMITTING UNDER VARIOUS PROVISIONS OF RCRA. DATA RELATED TO THESE COMPONENTS IS PROVIDED FOR INFORMATIONAL PURPOSES AND EASE OF REVIEW ONLY, AND THEY ARE NOT INTENDED TO BECOME REGULATED COMPONENTS OF THE HAZARDOUS WASTE FACILITY.

5	3/15/12	NAME CHANGED TO SIEMENS INDUSTRY, INC.	JBE	KEM	
4	2/22/07	UPDATED FOR PERMIT SUBMITTAL			
3	7/17/02	REVISED FOR RCRA PART B PERMIT APPLICATION	STA	KEM	
2	7/17/96	AS BUILT	CHJ		
1	3/27/96	GENERAL REVISIONS	ALJ	KEM	
REV.	DATE	REVISION DESCRIPTION	DRAWN	CHK'D	ENGR

CUSTOMER:

SIEMENS
INDUSTRY, INC.

SIEMENS INDUSTRY, INC.
Parker, AZ

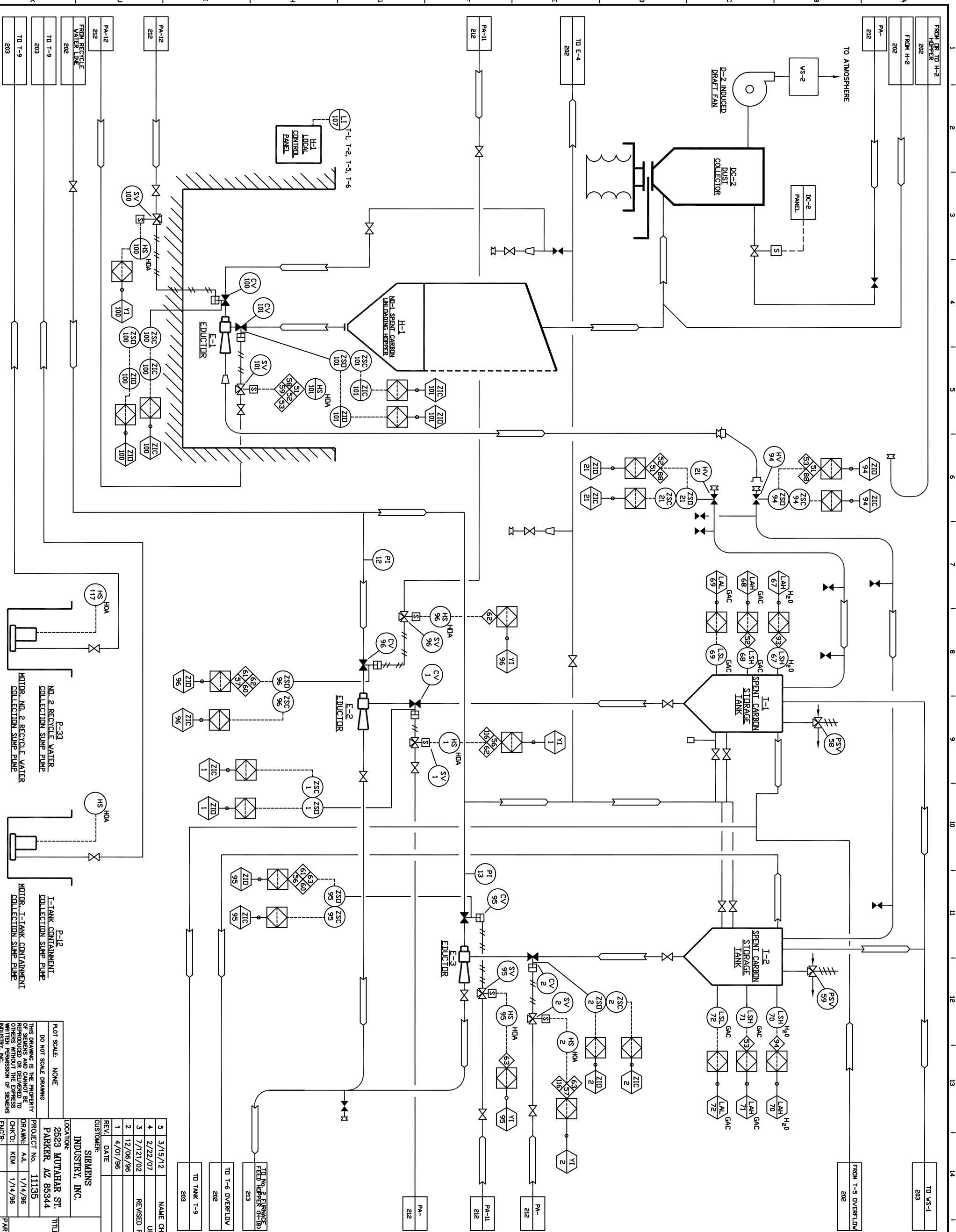
PLOT SCALE: NONE		TITLE:	
DO NOT SCALE DRAWING		REACTIVATION FACILITY	
PROJECT No. 11135		LEGEND & SPECIALTY ITEMS	
DRAWN: ALJ		PIPING & INSTRUMENTATION DIAGRAM	
CHK'D: KEM		PART No.	
ENGR:		DWG No. D11135-200	
		REV. 5	

INTERLOCK NOTES

- 51 = TRANSFER FROM H-1 TO T-1, 2, 5, OR 6; EITHER HV-21, HV-94, HV-33, OR HV-23 MUST BE OPEN FOR CV-101 TO OPEN.
- 52 = SLURRY TRANSFER FROM H-1 OR H-2 TO T-1 IS PREVENTED IF CARBON LEVEL REACHES LSH-68.
- 53 = SLURRY TRANSFER FROM H-1 OR H-2 TO T-2 IS PREVENTED IF CARBON LEVEL REACHES LSH-71.
- 56 = PREVENTION OF DOUBLE SLURRY FROM T-1:1. CV-1 WILL BE HELD SHUT IF CV-95, CV-24, OR CV-97 ARE OPEN.
- 57 = PREVENTION OF DOUBLE SLURRY FROM T-2: CV-2 WILL BE HELD SHUT IF CV-96, CV-24, OR CV-97 ARE OPEN.
- 58 = SEE NOTE ON DWG. 202
- 59 = SEE NOTE ON DWG. 202
- 60 = SEE NOTE ON DWG. 202
- 61 = SEE NOTE ON DWG. 202
- 89 = SEE NOTE ON DWG. 202.
- 119 = SEE NOTE ON DWG. 213.

NOTE:

THIS DRAWING INCLUDES COMPONENTS OF THE FACILITY THAT ARE EXCLUDED FROM PERMITTING UNDER HAZARDOUS WASTE REGULATIONS. THESE COMPONENTS ARE INCLUDED FOR INFORMATIONAL PURPOSES AND EASE OF REVIEW ONLY AND THEY ARE NOT INTENDED TO BECOME REGULATED COMPONENTS OF THE HAZARDOUS WASTE FACILITY.



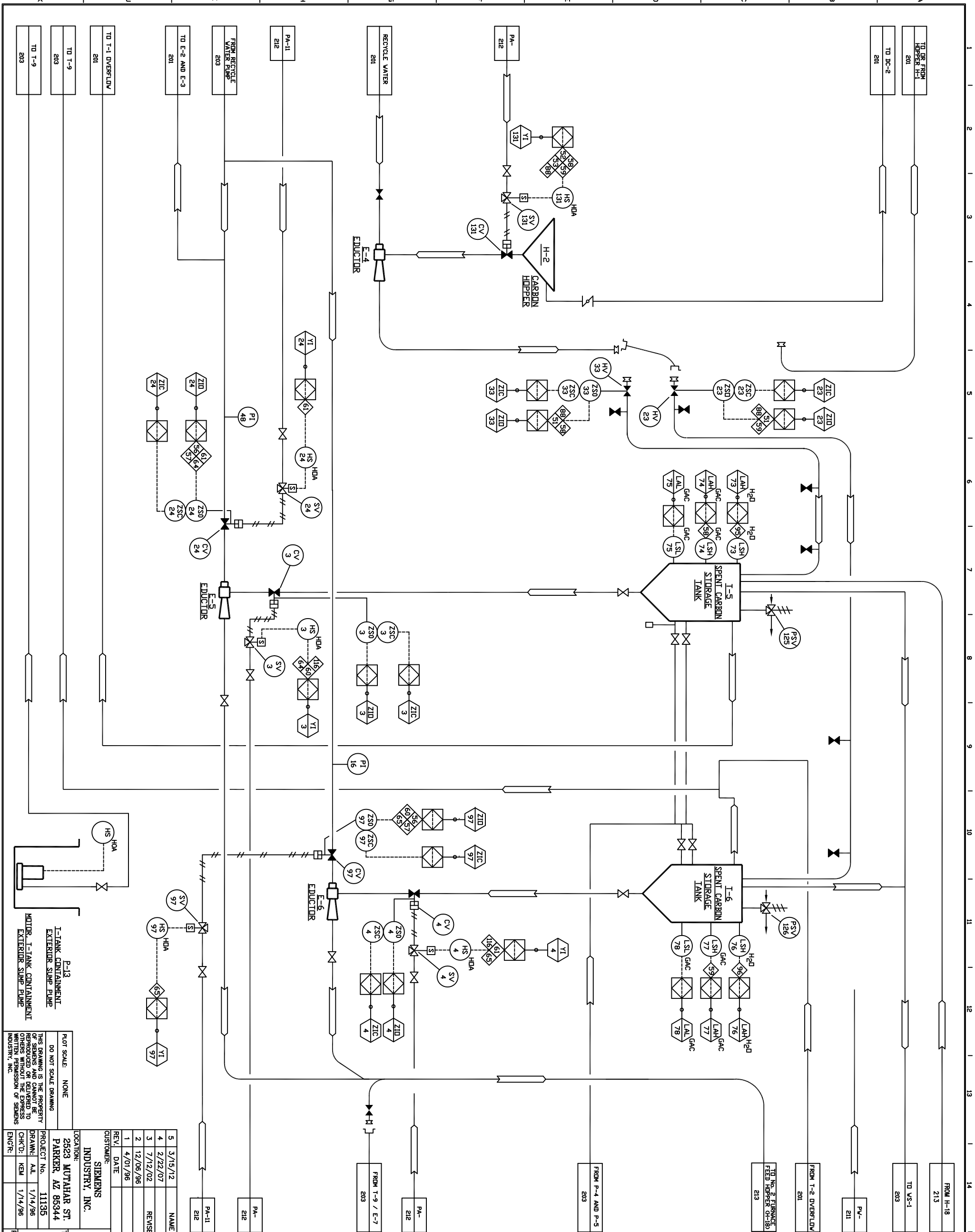
5	3/15/12	NAME CHANGED TO SIEMENS INDUSTRY, INC.	JBE	KEM
4	2/22/07	UPDATED FOR PERMIT SUBMITTAL	JBE	KEM
3	7/12/02	REVISED FOR ROCA PART B PERMIT APPLICATION	STA	KEM
2	12/06/96	AS BUILT	TGB	
1	4/01/96	GENERAL REVISIONS	A/L	KEM
REV	DATE	REVISION DESCRIPTION	DRAWN	CHK'D ENGR

SIEMENS INDUSTRY, INC.		TITLE:	
INDUSTRY, INC.		REACTIVATION FACILITY	
2523 MUTAHAR ST.		SPENT CARBON STORAGE / H-1	
PARKER, AZ 85344		PIPING & INSTRUMENTATION DIAGRAM	
LOCATION:	2523 MUTAHAR ST.	PROJECT No.	11135
DRAWN:	A/L	CHK'D:	KEM
DATE:	1/14/96	ENGR:	
PART No.	DWG No. D11135-201	REV	5

INTERLOCK NOTES

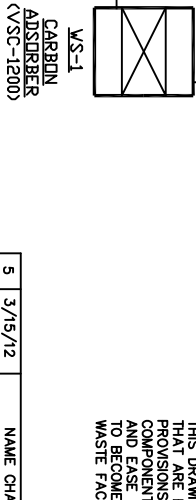
- 51 = SEE NOTE ON DWG. 201
- 52 = SEE NOTE ON DWG. 201
- 53 = SEE NOTE ON DWG. 201
- 56 = SEE NOTE ON DWG. 201
- 57 = SEE NOTE ON DWG. 201
- 58 = SLURRY TRANSFER FROM H-1 OR H-2 TO T-5 IS PREVENTED IF CARBON LEVEL REACHES LSH-74.
- 59 = SLURRY TRANSFER FROM H-1 OR H-2 TO T-6 IS PREVENTED IF CARBON LEVEL REACHES LSH-77.
- 60 = PREVENTION OF DOUBLE SLURRY FROM T-5: CV-3 WILL BE HELD SHUT IF CV-95, CV-96, OR CV-97 ARE OPEN.
- 61 = PREVENTION OF DOUBLE SLURRY FROM T-6: CV-4 WILL BE HELD SHUT IF CV-95, CV-96, OR CV-24 ARE OPEN.
- 68 = TRANSFER FROM H-2 TO T-1, 2, 5, OR 6: EITHER HV-21, HV-94, HV-33, OR HV-23 MUST BE OPEN FOR CV-131 TO OPEN.
- 19 = SEE NOTE ON DWG. 213.

NOTE:
THIS DRAWING INCLUDES COMPONENTS OF THE FACILITY THAT ARE EXEMPT FROM PERMITTING UNDER VARIOUS PROVISIONS OF RCRA. DATA RELATED TO THESE COMPONENTS IS PROVIDED FOR INFORMATIONAL PURPOSES AND DOES NOT CONSTITUTE A DESIGN. THE DRAWING IS NOT INTENDED TO BECOME A REGULATED COMPONENT OF THE HAZARDOUS WASTE FACILITY.



5	3/15/12	NAME CHANGED TO SIEMENS INDUSTRY, INC.	JBE	KEM	
4	2/22/07	UPDATED FOR PERMIT SUBMITTAL	JBE	KEM	
3	7/12/02	REUSED FOR RCRA PART B PERMIT APPLICATION	STA	KEM	
2	12/06/96	AS BUILT	TGB		
1	4/01/96	GENERAL REVISIONS	A.L.	KEM	
REV.	DATE	REVISION DESCRIPTION	DRAWN	CHK'D	ENGR
CUSTOMER:					
SIEMENS					
INDUSTRY, INC.		SIEMENS INDUSTRY, INC.			
LOCATION:		Parker, AZ			
2523 MUTAHAR ST.					
PARKER, AZ 85344					
PROJECT NO.		11135			
DRAWING:		A.L.			
CHK'D:		1/14/96			
ENGR:		1/14/96			
PART NO.		DWG NO.		REV.	
		D11135-202		5	
TITLE:					
REACTIVATION FACILITY					
SPENT CARBON STORAGE / H-2					
PIPING & INSTRUMENTATION DIAGRAM					

6 = RECYCLE WATER PUMPS P-4 AND P-5
WILL STOP WHEN LEVEL IN T-3 IS



NOTE: THIS DRAWING INCLUDES COMPONENTS OF THE FACILITY THAT ARE EXEMPT FROM PERMITTING UNDER VARIOUS PROVISIONS OF RCRA. DATA RELATED TO THESE COMPONENTS IS REQUIRED FOR INFORMATIONAL PURPOSES AND EASE OF REVIEW ONLY, AND THEY ARE NOT INTENDED TO BE REGULATED COMPONENTS OF THE HAZARDOUS WASTE FACILITY.

5	3/5/12	NAME CHANGED TO SIEMENS INDUSTRY, INC.	JBE	KEM
4	2/22/02	UPDATED FOR PERMIT SUBMITTAL	JBE	KEM
3	7/16/02	REVISED FOR RORA PART B PERMIT APPLICATION	STA	KEM
2	12/06/96	AS BUILT	TGB	KEM
1	4/02/96	GENERAL REVISIONS	ALL	KEM
REV	DATE	REVISION DESCRIPTION	CHKD	ENG'R
CUSTOMER:				
			DRAWN	

TITLE: 2523 MUTAHAR ST. PARKER, AZ 85344	PLOT SCALE: NONE
PROJECT No. 11135 DRAWN: A.L. 1/02/96 CHK'D: KEM 1/02/96	DO NOT SCALE DRAWING THIS DRAWING IS THE PROPERTY OF SIEMENS, AND CANNOT BE REPRODUCED OR COPIED BY OTHERS WITHOUT THE EXPRESS PERMISSION OF SIEMENS INDUSTRIES, INC.
REACTIVATION FACILITY RECYCLE WATER PIPING & INSTRUMENTATION DIAGRAM	PART No. DWG No. D11135-203 REV. 5

- INTERLOCK NOTES
- 13

= WHEN LEVEL IN TANK T-11 REACHES ONE FOOT, PUMP P-7 WILL SHUT-OFF.

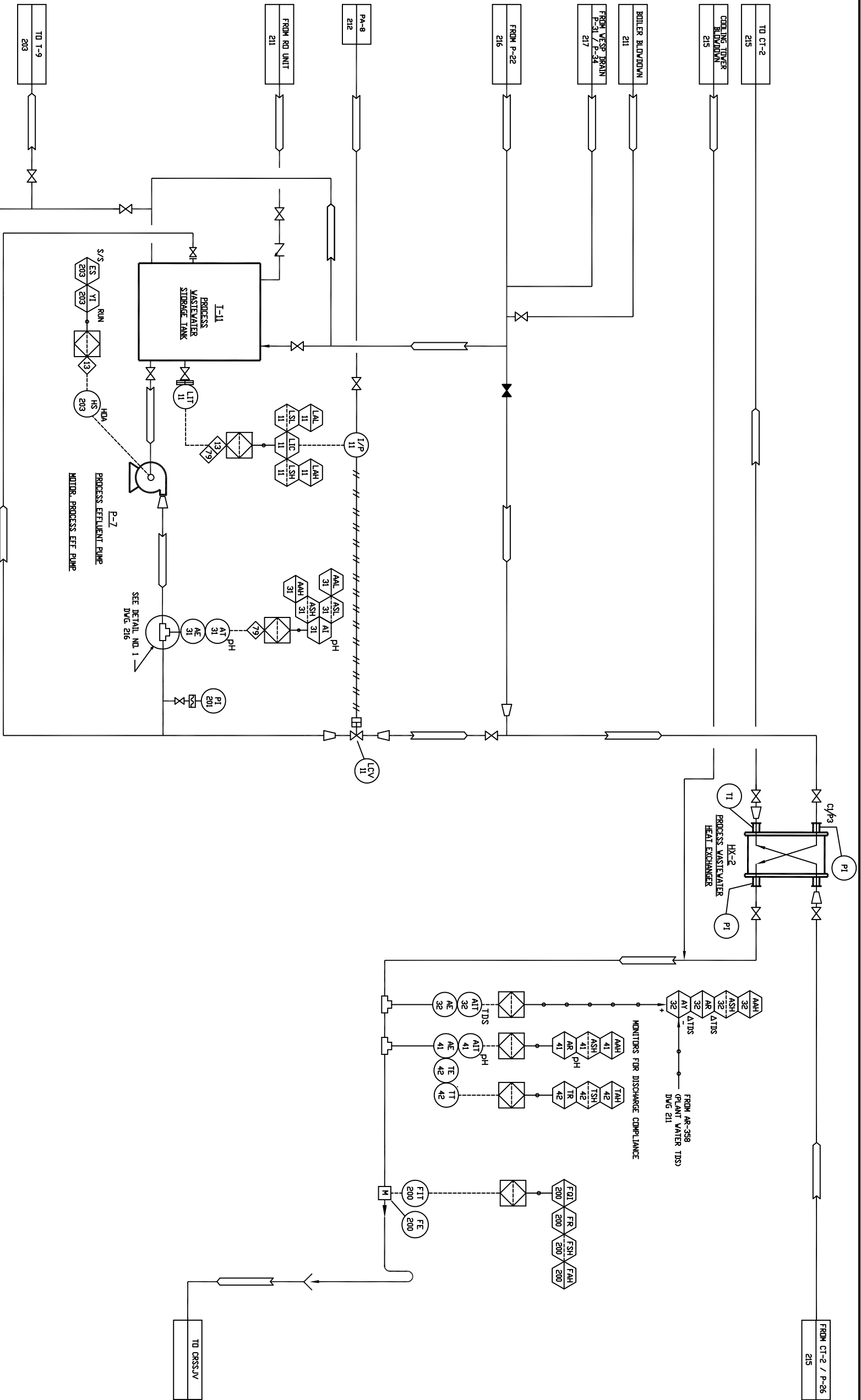
79

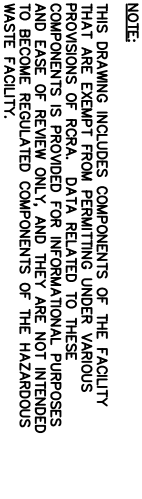
= PH OUT OF RANGE CLOSES LCV-11, UNLESS LSH-11 IS HIGH.

NOTE:
THIS DRAWING INCLUDES COMPONENTS OF THE FACILITY THAT ARE EXEMPT FROM PERMITTING UNDER VARIOUS PROVISIONS OF RCRA. DATA RELATED TO THESE COMPONENTS IS PROVIDED FOR INFORMATIONAL PURPOSES AND EASE OF REVIEW ONLY, AND THEY ARE NOT INTENDED TO BECOME REGULATED COMPONENTS OF THE HAZARDOUS WASTE FACILITY.

5	3/15/12	NAME CHANGED TO SIEMENS INDUSTRY, INC.	JBE	KEM	
4	2/22/07	UPDATED FOR PERMIT SUBMITTAL	JBE	KEM	
3	7/17/02	REVISED FOR RCRA PART B PERMIT APPLICATION	STA	KEM	
2	12/06/96	AS BUILT	TGB		
1	4/01/96	DELETED EFFLUENT LIFT STATION, GENERAL REVISIONS	AJJ	KEM	
REV.	DATE	REVISION DESCRIPTION	DRAWN	CHK'D	ENGR

SIEMENS			SIEMENS INDUSTRY, INC..		
CUSTOMER:			Parker, AZ		
LOCATION:			TITLE:		
2523 MUTAHAR ST.			REACTIVATION FACILITY		
PARKER, AZ 85344			PROCESS WATER DISCHARGE TO POTW		
PROJECT No. 11135			PIPING & INSTRUMENTATION DIAGRAM		
DRAWN: AJW					
CHK'D: KEM					
ENGR:					
PILOT SCALE: NONE					
DO NOT SCALE DRAWING					
THIS DRAWING IS THE PROPERTY OF SIEMENS INDUSTRY, INC. IT IS TO BE KEPT IN CONFIDENTIALITY AND NOT REPRODUCED OR DELIVERED TO OTHERS WITHOUT THE EXPRESS WRITTEN PERMISSION OF SIEMENS INDUSTRY, INC.					





- 61 = IF S-2 STORAGE TANK IS SELECTED, CONVEYOR C-7 STARTS WHEN CARBON LEVEL IN H-3 SURGE HOPPER FALLS BELOW LSH-339 AND C-7 STOPS WHEN CARBON LEVEL IN H-3 REACHES LSH-339.
 62 = CARBON TRANSFER FROM C-4 PRODUCT TRANSPORTER TO H-4 RECEIVING HOPPER IS INITIATED WHEN CARBON LEVEL FALLS BELOW LSH-673 IN H-4.
 65 = IF S-3 STORAGE TANK IS SELECTED, CV-337 OPENS WHEN CARBON LEVEL IN H-3 SURGE HOPPER FALLS BELOW LSH-339 UNLESS C-4 TRANSPORTER LOADING CYCLE IS IN PROGRESS. CV-337 CLOSING WHEN CARBON LEVEL IN H-3 REACHES LSH-339.
 66 = IF S-4 STORAGE TANK IS SELECTED, CONVEYOR C-8 STARTS WHEN CARBON LEVEL IN H-3 SURGE HOPPER FALLS BELOW LSH-339 AND C-8 STOPS WHEN CARBON LEVEL IN H-3 REACHES LSH-339.
 67 = SEE NOTE ON DWG. 218.
 68 = SEE NOTE ON DWG. 218.

PLOT SCALE:	NONE
DO NOT SCALE DRAWING	
THIS DRAWING IS THE PROPERTY OF SIEMENS AND CANNOT BE REPRODUCED OR DELIVERED TO OTHERS WITHOUT THE EXPRESS WRITTEN PERMISSION OF SIEMENS INDUSTRY, INC.	

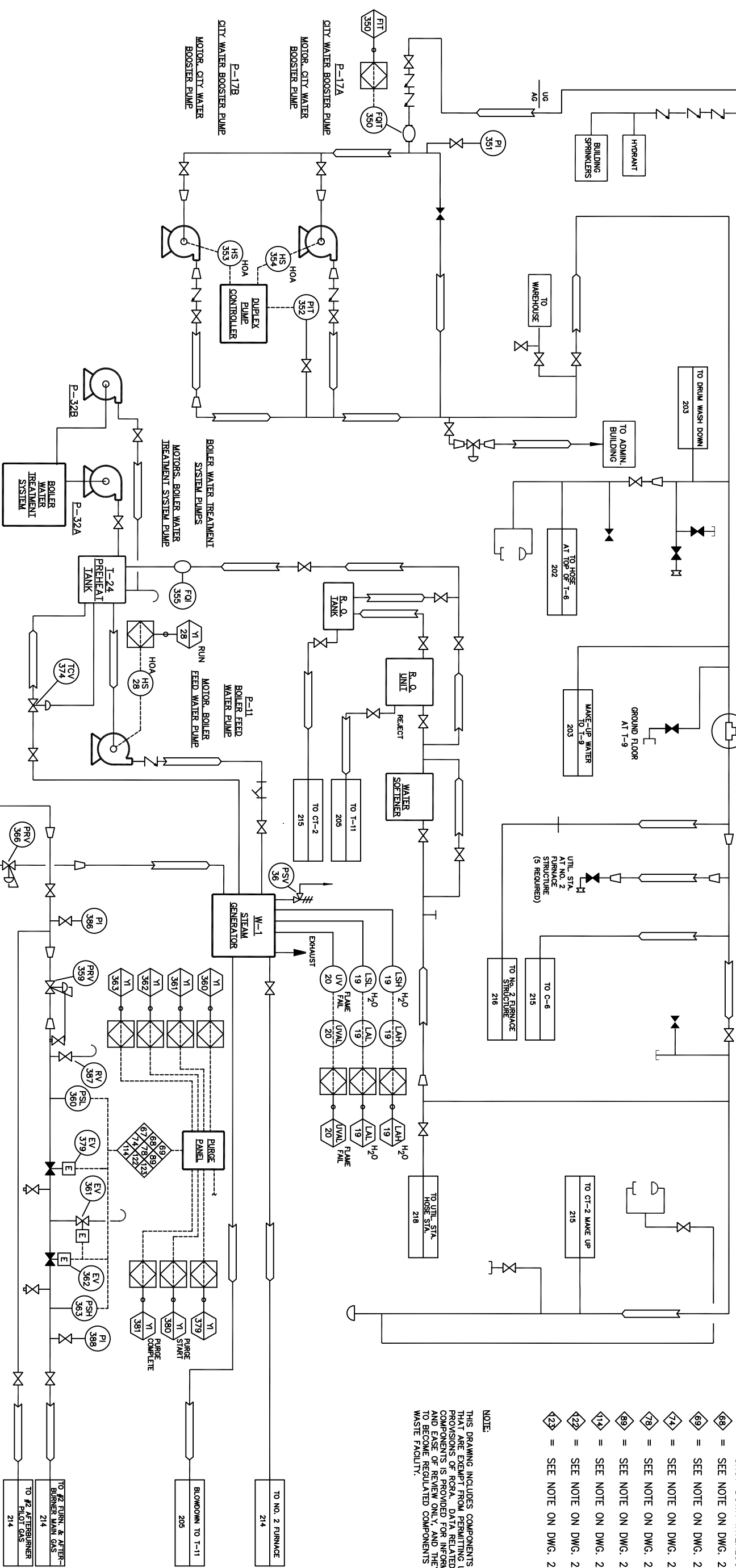
PRINT DATE: 4/19/12

INTERLOCK NOTES

- 67 = BURNER PERMISSIVE. BURNER SYSTEM SHUT-DOWN UPON HIGH OR LOW GAS PRESSURE AT UTILITY HEADER ON PSL-360 OR PSH-363 INITIATES RF-2 SHUT-DOWN INTERLOCK 121, (SEE NOTE ON DWG. 214).
- 68 = SEE NOTE ON DWG. 214.
- 69 = SEE NOTE ON DWG. 214.
- 74 = SEE NOTE ON DWG. 214.
- 78 = SEE NOTE ON DWG. 214.
- 89 = SEE NOTE ON DWG. 214.
- 114 = SEE NOTE ON DWG. 214.
- 122 = SEE NOTE ON DWG. 214.
- 123 = SEE NOTE ON DWG. 216.

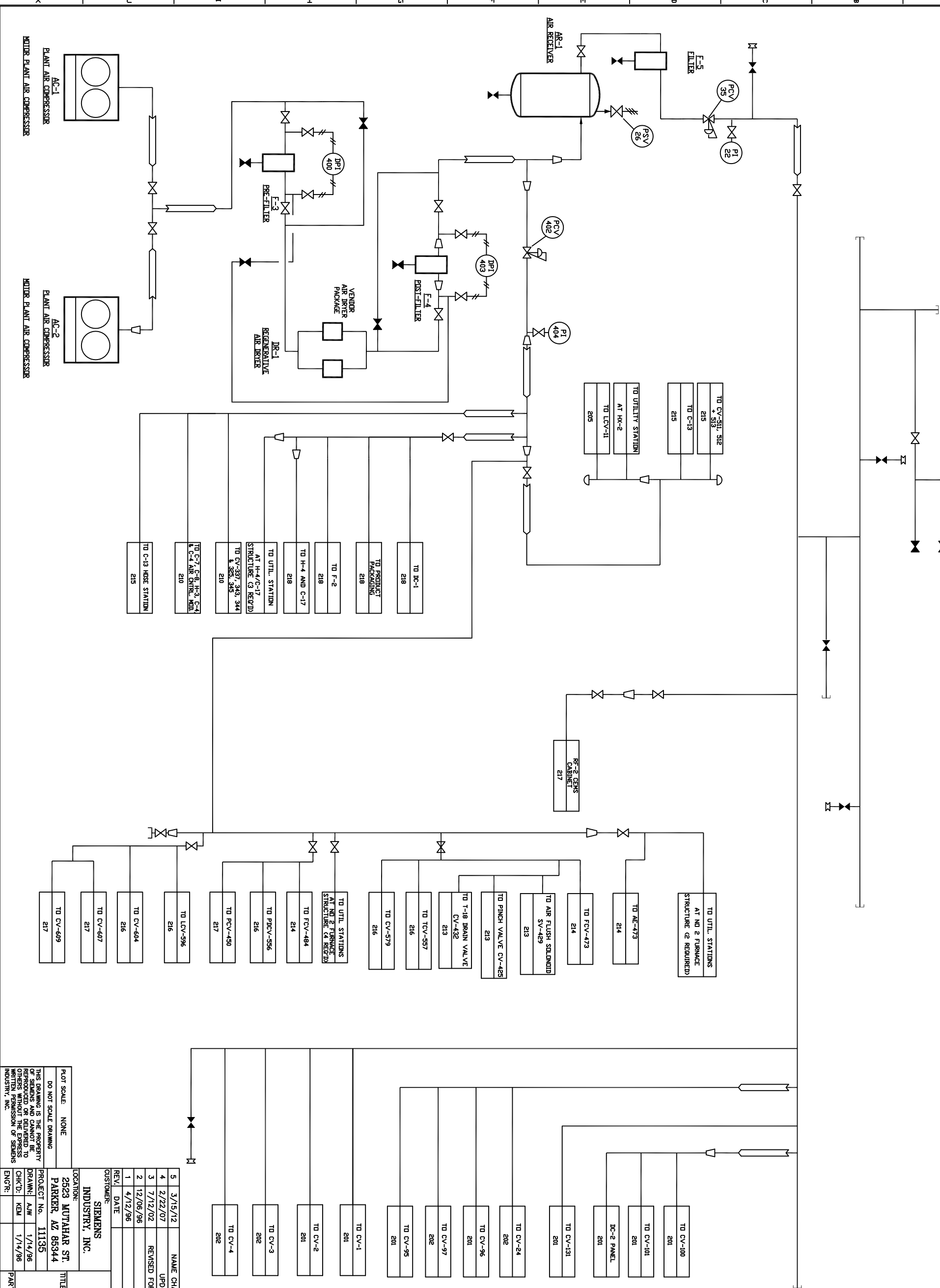
NOTE:

THIS DRAWING INCLUDES COMPONENTS OF THE FACILITY THAT ARE EXEMPT FROM PERMITTING UNDER VARIOUS PROVISIONS OF RCRA. DATA RELATED TO THESE COMPONENTS IS PROVIDED FOR INFORMATIONAL PURPOSES AND EASE OF REVIEW ONLY, AND THEY ARE NOT INTENDED TO BECOME REGULATED COMPONENTS OF THE HAZARDOUS WASTE FACILITY.



5	3/15/12	NAME CHANGED TO SIEMENS INDUSTRY, INC.	JBE	KEM
4	2/22/07	UPDATED FOR PERMIT SUBMITTAL	JBE	KEM
3	7/17/02	REVISED FOR RCRA PART B PERMIT APPLICATION	STA	KEM
2	12/06/96	AS BUILT	TGB	
1	4/12/96	GENERAL REVISIONS	ALL	KEM
REV.	DATE	REVISION DESCRIPTION	DRAWN	CHK'D
CUSTOMER: SIEMENS INDUSTRY, INC.				
SIEMENS INDUSTRY, INC.				
Parker, AZ				
LOCATION: 2523 WUTAHAR ST. PARKER, AZ 85344				
TITLE: REACTIVATION FACILITY UTILITIES - NG - PW - STM PIPING & INSTRUMENTATION DIAGRAM				
PROJECT No. 11135			PART No.	
DRAWING: A.L.			DWG No. D11135-211	
CHK'D: KEM			REV. 5	
ENGR:				

INTERLOCK NOTES



5				3/15/12	NAME CHANGED TO SIEMENS INDUSTRY, INC.	JBE	KEM	
4				2/22/07	UPDATED FOR PERMIT SUBMITTAL	JBE	KEM	
3				7/12/02	REVISED FOR RORA PART B PERMIT APPLICATION	STA	KEM	
2				12/06/96	AS BUILT	TGB		
1				4/12/96	GENERAL REVISIONS	ALL	KEM	
REV.				DATE	REVISION DESCRIPTION	DRAWN	CHK'D	ENGR
CUSTOMER:								
SIEMENS INDUSTRY, INC.								
LOCATION:								
2523 MUTAHAR ST.								
PARKER, AZ 85344								
PROJECT No. 11135								
DRAWN: AMW								
CHK'D: KEM								
ENGR: KEM								
PLOT SCALE: NONE								
DO NOT SCALE DRAWING								
THIS DRAWING IS THE PROPERTY OF SIEMENS AND CANNOT BE REPRODUCED OR DELIVERED TO OTHERS WITHOUT THE EXPRESS WRITTEN PERMISSION OF SIEMENS INDUSTRY, INC.								
TITLE:								
REACTIVATION FACILITY UTILITIES - COMPRESSED AIR PIPING & INSTRUMENTATION DIAGRAM								
PART No.						DWG No.	D11135-212	REV. 5

$\frac{1}{2}$

- [illegible]

START/STOP

ES 428

YI 428

RUN

72, 113, 200, 208, 209, 210, 211

HS 428

HDA

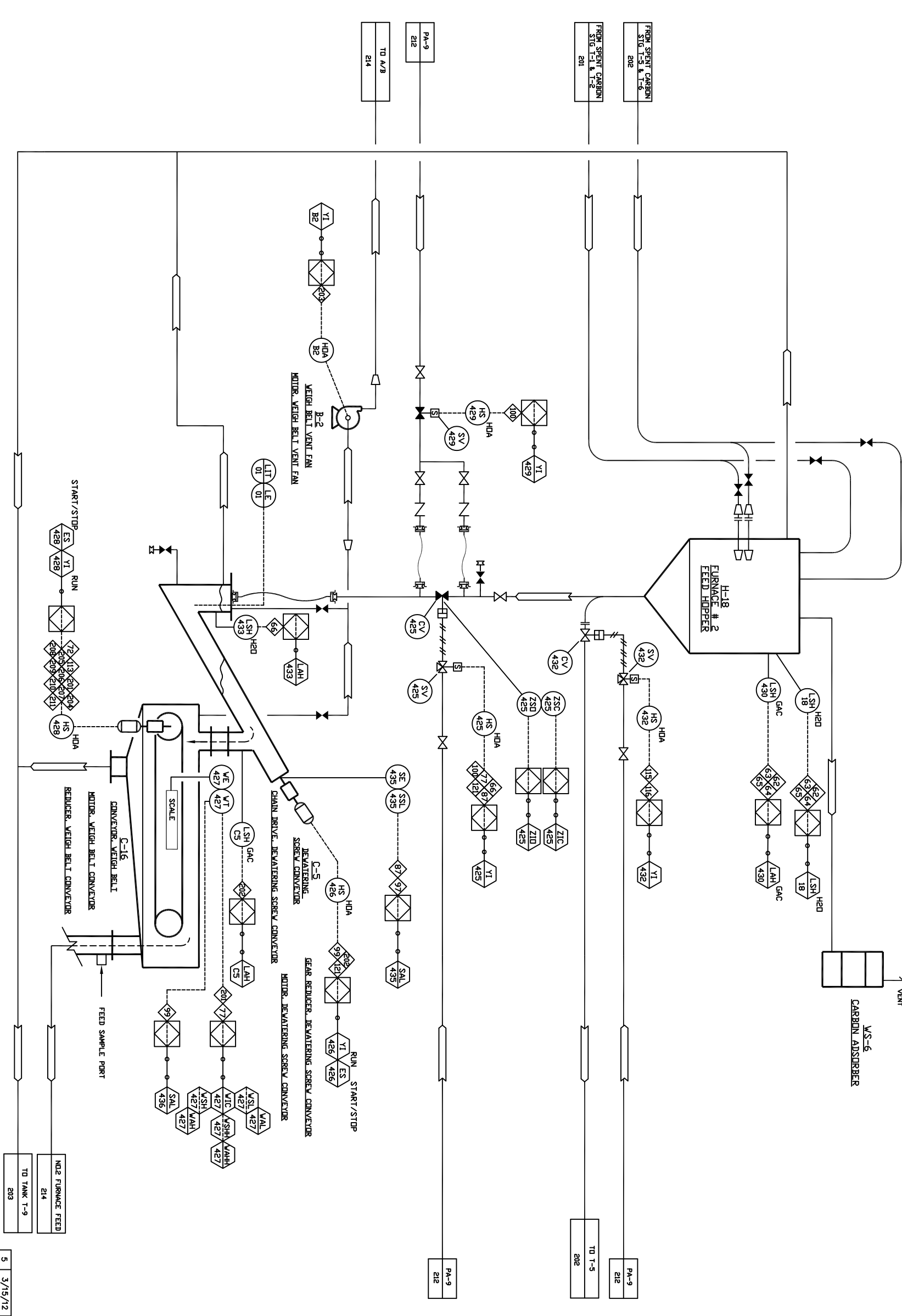
MOTOR, WEIGH BELT CONVEYOR

FEED SAMPLE PORT

REDUCER, WEIGH BELT CONVEYOR

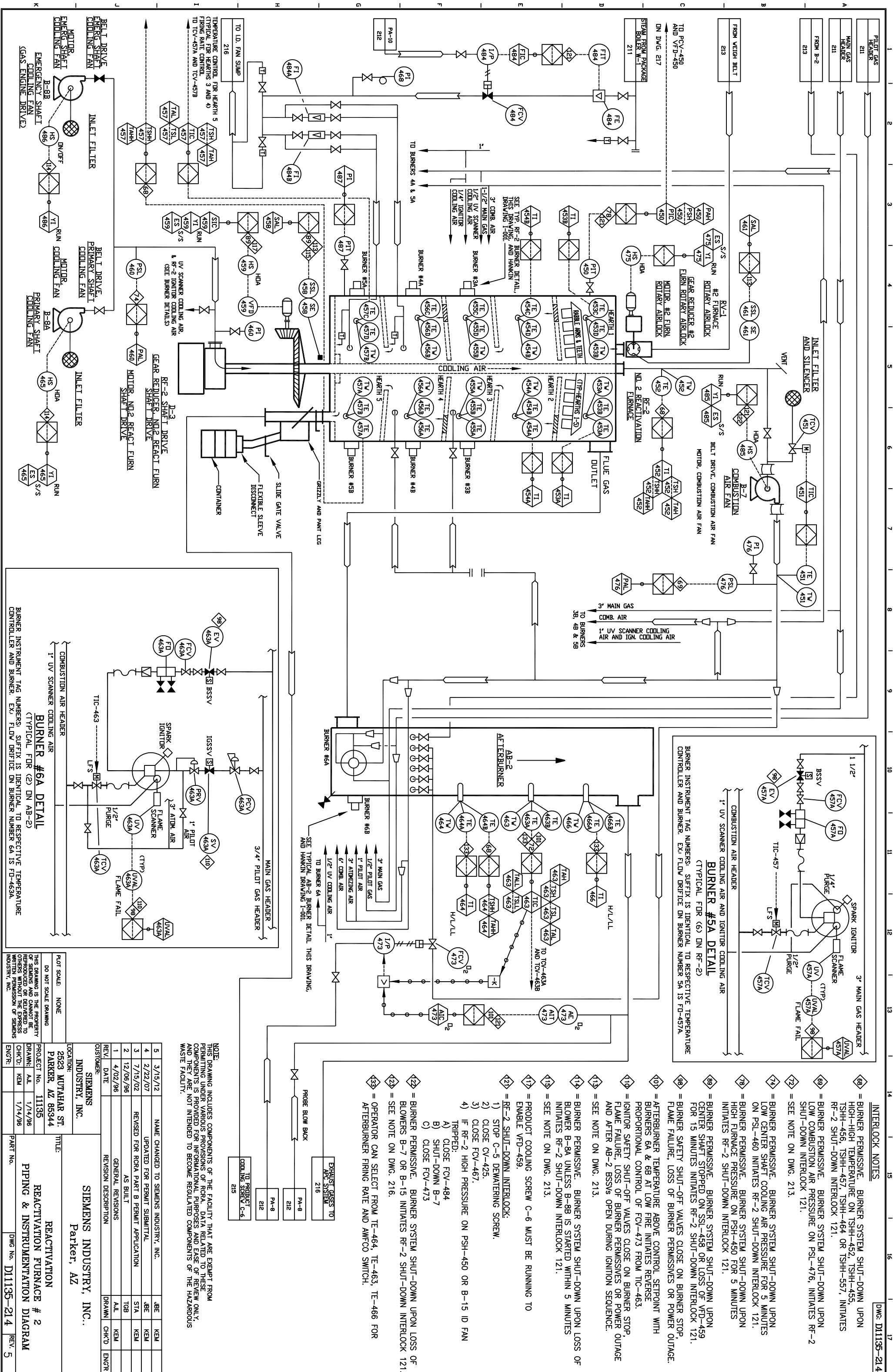
N2 FURNACE FEED

214



E03	
5	3/15/12
4	2/22/07
3	7/12/02
2	12/06/96
1	4/01/96
REV	DATE
CUSTOMER	

CUSTOMER: SIEMENS	
INDUSTRY: INDUSTRY	
LOCATION: 2623 MUTA PARKER, AZ	
PROJECT NO.:	DO NOT SCALE DRAWING
PLANT SCALE: NONE	THIS DRAWING IS THE PROPERTY OF SIEMENS AND CANNOT BE REPRODUCED OR DELIVERED TO OTHERS WITHOUT THE EXPRESS WRITTEN PERMISSION OF SIEMENS INDUSTRY, INC.
DRAWN: A.L.	ENGR: KEM
CHECKED: KEM	



INTERLOCK NOTES

DWG: D11135-214

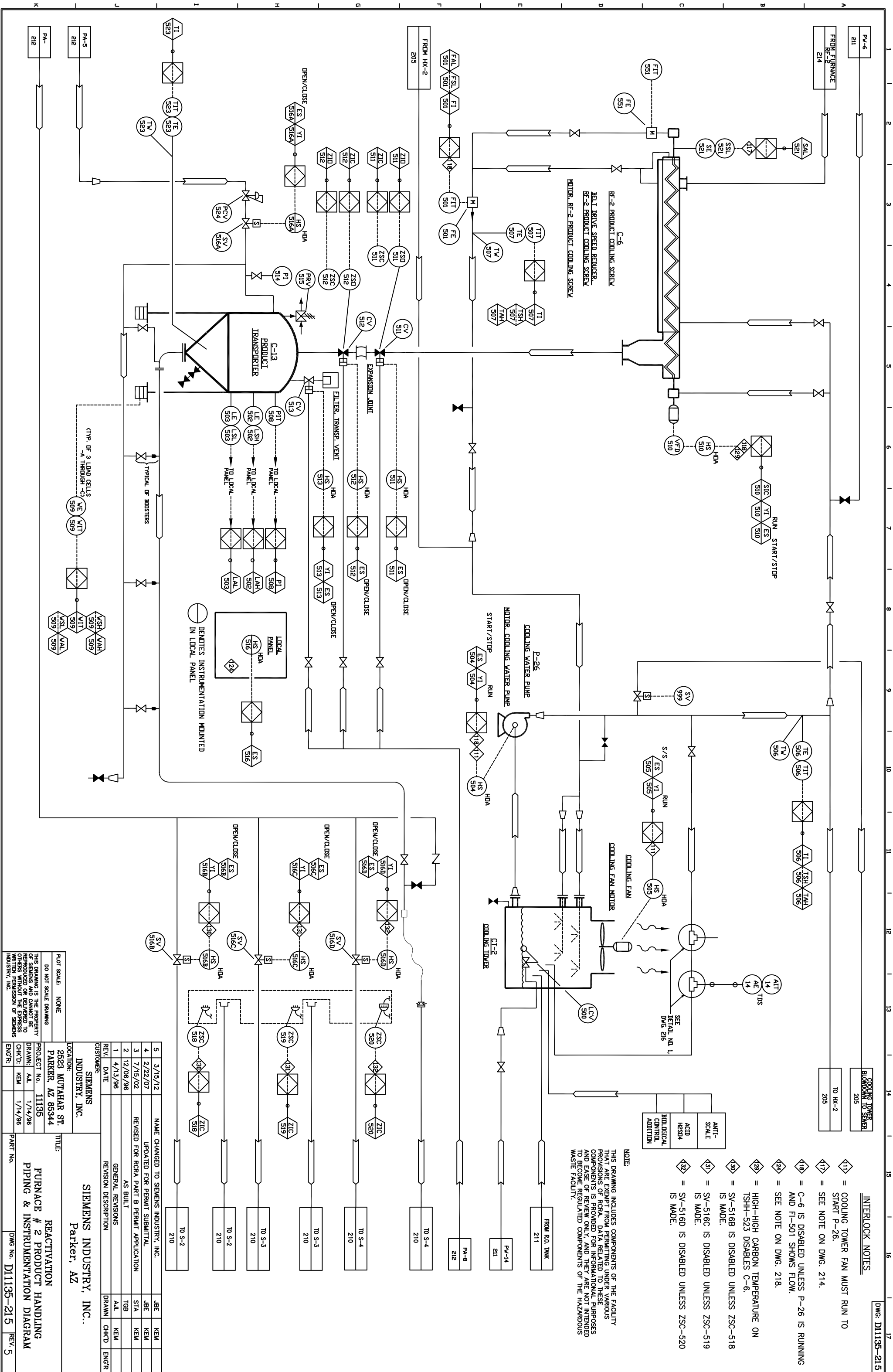
69 = BURNER PERMISSIVE. BURNER SYSTEM SHUT-DOWN UPON HIGH-HIGH TEMPERATURE ON TSHH-452, TSHH-455, TSHH-456, TSHH-457, TSHH-464 OR TSHH-557, INITIATES RF-2 SHUT-DOWN INTERLOCK 121.
 70 = BURNER PERMISSIVE. BURNER SYSTEM SHUT-DOWN UPON LOW COMBUSTION AIR PRESSURE ON PSL-476, INITIATES RF-2 SHUT-DOWN INTERLOCK 121.
 71 = SEE NOTE ON DWG. 213.
 72 = BURNER PERMISSIVE. BURNER SYSTEM SHUT-DOWN UPON LOW CENTER SHAFT COOLING AIR PRESSURE FOR 5 MINUTES ON PSL-460 INITIATES RF-2 SHUT-DOWN INTERLOCK 121.
 73 = BURNER PERMISSIVE. BURNER SYSTEM SHUT-DOWN UPON HIGH FURNACE PRESSURE ON PSH-450 FOR 5 MINUTES INITIATES RF-2 SHUT-DOWN INTERLOCK 121.
 74 = BURNER PERMISSIVE. BURNER SYSTEM SHUT-DOWN UPON CENTER SHAFT STOPPED ON SSL-458 OR LOSS OF VFD-459 FOR 15 MINUTES INITIATES RF-2 SHUT-DOWN INTERLOCK 121.
 75 = BURNER SAFETY SHUT-OFF VALVES CLOSE ON BURNER STOP, FLAME FAILURE, LOSS OF BURNER PERMISSIVES OR POWER OUTAGE.
 76 = AFTERBURNER TEMPERATURE ABOVE CONTROL SETPOINT WITH BURNERS 6A & 6B AT LOW FIRE INITIATES REVERSE PROPORTIONAL CONTROL OF FCV-473 FROM TIC-463.
 77 = IGNITOR SAFETY SHUT-OFF VALVES CLOSE ON BURNER STOP, FLAME FAILURE, LOSS OF BURNER PERMISSIVES OR POWER OUTAGE AND AFTER A8-2 BSSVS OPEN DURING IGNITION SEQUENCE.
 113 = SEE NOTE ON DWG. 213.
 114 = BURNER PERMISSIVE. BURNER SYSTEM SHUT-DOWN UPON LOSS OF BLOWER B-8A UNLESS B-8B IS STARTED WITHIN 5 MINUTES INITIATES RF-2 SHUT-DOWN INTERLOCK 121.
 115 = SEE NOTE ON DWG. 213.
 117 = PRODUCT COOLING SCREW C-6 MUST BE RUNNING TO ENABLE VFD-459.
 127 = RF-2 SHUT-DOWN INTERLOCK:
 1) STOP C-5 DEWATERING SCREW.
 2) CLOSE CV-425.
 3) CLOSE FCV-467.
 4) IF RF-2 HIGH PRESSURE ON PSH-450 OR B-15 ID FAN TRIPPED:
 A) CLOSE FCV-484
 B) SHUT-DOWN B-7
 C) CLOSE FCV-473
 128 = BURNER PERMISSIVE. BURNER SYSTEM SHUT-DOWN UPON LOSS OF BLOWERS B-7 OR B-15 INITIATES RF-2 SHUT-DOWN INTERLOCK 121
 129 = SEE NOTE ON DWG. 216.
 133 = OPERATOR CAN SELECT FROM TE-464, TE-463, TE-466 FOR AFTERBURNER FIRING RATE AND AMFCO SWITCH.

NOTE: THIS DRAWING INCLUDES COMPONENTS OF THE FACILITY THAT ARE EXEMPT FROM PERMITTING UNDER VARIOUS PROVISIONS OF RCRA. DATA RELATED TO THESE COMPONENTS IS PROVIDED FOR INFORMATIONAL PURPOSES AND EASE OF REVIEW ONLY, AND THEY ARE NOT INTENDED TO BECOME REGULATED COMPONENTS OF THE HAZARDOUS WASTE FACILITY.

5	3/15/12	NAME CHANGED TO SIEMENS INDUSTRY, INC. UPDATED FOR PERMIT SUBMITTAL REVISED FOR RCMA PART B PERMIT APPLICATION AS BUILT GENERAL REVISIONS	JBE	KEM	
4	2/22/07		JBE	KEM	
3	7/15/02		STA	KEM	
2	12/06/96		TGB		
1	4/02/96		KEM		
REV	DATE	REVISION DESCRIPTION	DRAWN	CHK'D	ENGR'D

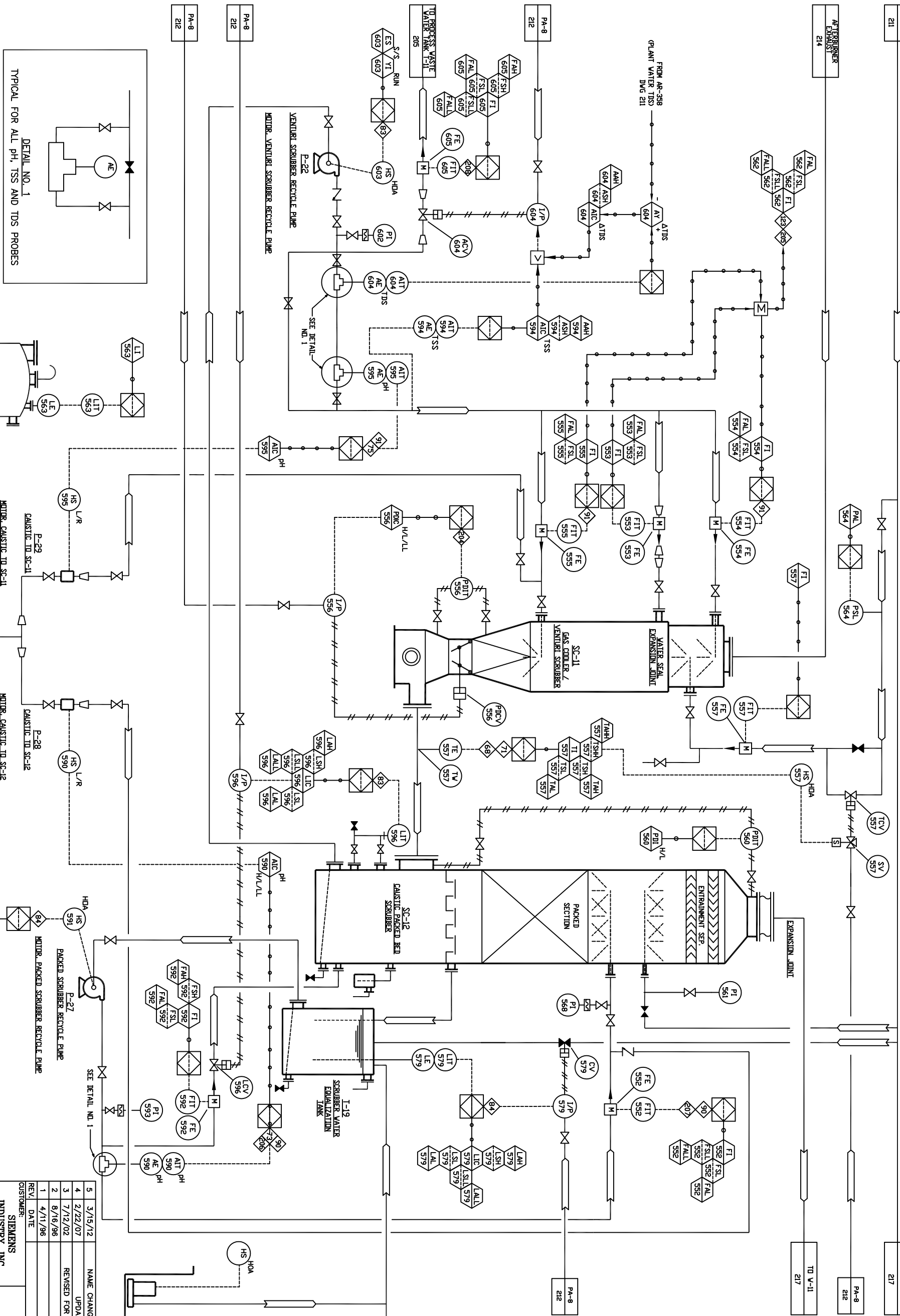
SIEMENS INDUSTRY, INC.		SIEMENS INDUSTRY, INC.. Parker, AZ	
LOCATION: 2523 MUTAHAR ST. PARKER, AZ 85344		TITLE: REACTIVATION REACTIVATION FURNACE # 2 PIPING & INSTRUMENTATION DIAGRAM	
PROJECT NO. 11135		PART NO.	
DRAWN: AIL CHK'D: KEM 1/14/96 1/14/96		DWG NO. D11135-214	
ENGR:		REV. 5	
THIS DRAWING IS THE PROPERTY OF SIEMENS AND IS TO BE USED ONLY FOR THE PROJECT AND NOT BE LOANED, REPRODUCED OR COPIED WITHOUT THE EXPRESS WRITTEN PERMISSION OF SIEMENS INDUSTRY, INC.			
DO NOT SCALE DRAWING			
PLOT SCALE: NONE			

COMBUSTION AIR HEADER
1" UV SCANNER COOLING AIR
BURNER #6A DETAIL
(TYPICAL FOR (2) ON AB-2)
BURNER INSTRUMENT TAG NUMBERS: SUFFIX IS IDENTICAL TO RESPECTIVE TEMPERATURE CONTROLLER AND BURNER. EX. FLOW DRIFICE ON BURNER NUMBER 6A IS FD-463A.

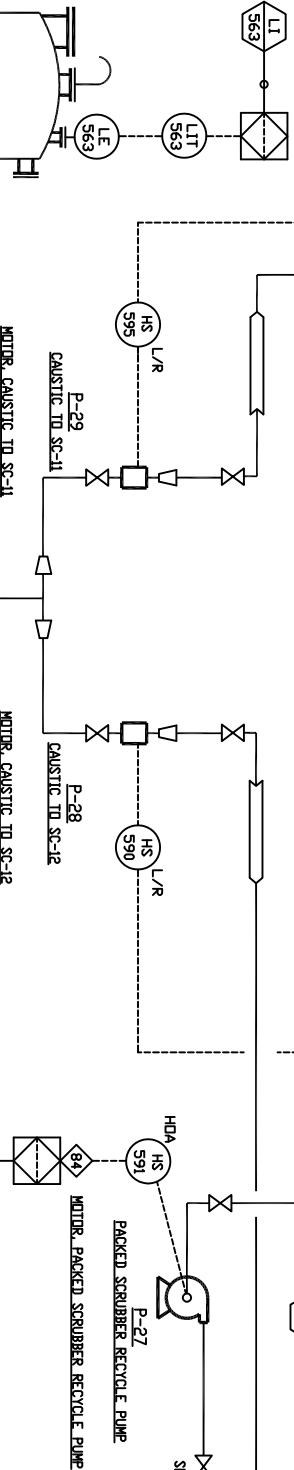


INTERLOCK NOTES

- 168 = SEE NOTE ON DWG. 214.
 171 = TCV-557 OPENS UPON HIGH-HIGH SCRUBBER GAS TEMPERATURE ON TSHH-557.
 173 = LOW pH TURNS ON CAUSTIC PUMP P-28. HIGH pH TURNS OFF P-28.
 175 = LOW pH TURNS ON CAUSTIC PUMP P-29 HIGH pH TURNS OFF P-29.
 183 = P-22 IS DISABLED UPON LOW-LOW LEVEL IN SC-12 ON LSLL-596.
 184 = P-27 IS DISABLED UPON LOW-LOW LEVEL IN T-19 ON LSLL-579.
 190 = FI-552 MUST SHOW FLOW TO ENABLE CAUSTIC PUMP P-28.
 191 = BOTH FI-554 AND FI-555 MUST SHOW FLOW TO ENABLE CAUSTIC PUMP P-29.
 123 = BURNER PERMISSIVE. BURNER SYSTEM SHUT-DOWN UPON LOW-LOW SCRUBBER WATER FLOW FOR 5 MINUTES ON FSLL-562 INITIATES RF-2 SHUT-DOWN INTERLOCK 121,
 204 = SEE NOTE ON DWG. 213.
 205 = SEE NOTE ON DWG. 213.
 206 = SEE NOTE ON DWG. 213.
 207 = SEE NOTE ON DWG. 213.
 208 = SEE NOTE ON DWG. 213.



DETAIL NO. 1
TYPICAL FOR ALL pH, TSS AND TDS PROBES



5	3/15/12	NAME CHANGED TO SIEMENS INDUSTRY, INC.	JBE	KEM	
4	2/22/07	UPDATED FOR PERMIT SUBMITTAL	JBE	KEM	
3	7/12/02	REVISED FOR RCQA PART B PERMIT APPLICATION	STA	KEM	
2	8/6/96	AS BUILT	CHJ		
1	4/11/96	GENERAL REVISIONS	ALL	KEM	
REV.	DATE	REVISION DESCRIPTION	DRAWN	CHK'D	ENGR

SIEMENS
INDUSTRY, INC.

SIEMENS INDUSTRY, INC..
Barber AZ

2523 MUTAHAR ST.
TITLE:

PARKER, AZ 85344	REACTIVATION FACILITY
PROJECT No. 11135	FURNACE #2 OFF GAS SCRIBBER

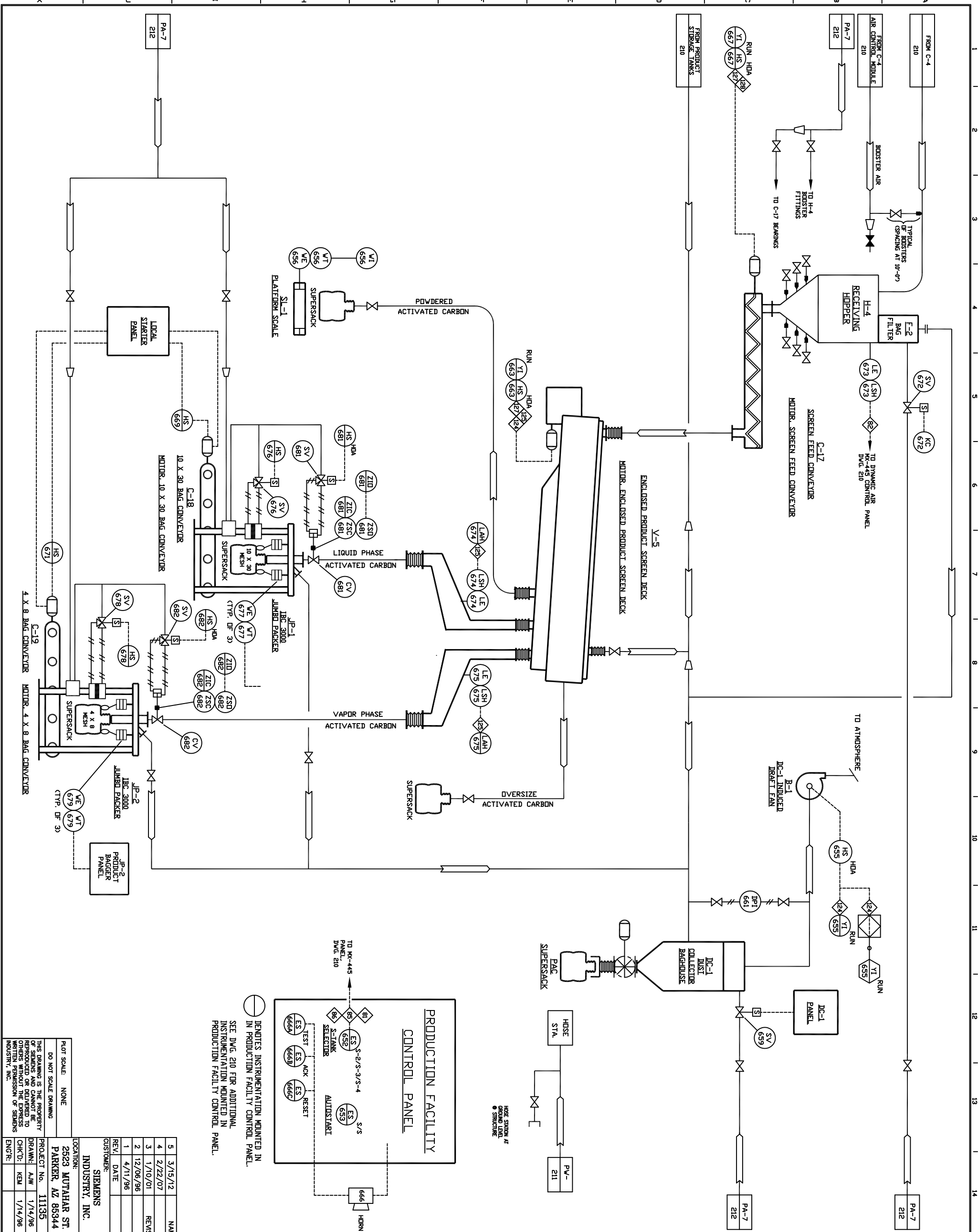
DRAWN:	
CHECK'D:	1/14/96
BY:	1/14/96

PIPING & INSTRUMENTATION DIAGRAM

DATE	1/14/50	PART No.	DWG No.	REV.
ENGR:			D11135-216	5
NAME				

INTERLOCK NOTES

- Ⓐ1 = SEE NOTE ON DWG. 210.
- Ⓐ2 = SEE NOTE ON DWG. 210.
- Ⓐ5 = SEE NOTE ON DWG. 210.
- Ⓐ6 = SEE NOTE ON DWG. 210.
- Ⓐ7 = B-1 MUST BE RUNNING TO ENABLE SCREEN DECK V-5, JP-1, JP-2, AND CARBON TRANSPORT FROM C-4 TO H-4.
- Ⓐ8 = HIGH CARBON LEVEL IN PRODUCT CHUTES ON LSH-674 OR LSH-675 STOPS V-5.
- Ⓐ9 = V-5 MUST BE RUNNING TO ENABLE C-17.
- Ⓐ9 = PRODUCTION FACILITY AUTO-START.



NOTE: THIS DRAWING INCLUDES COMPONENTS OF THE FACILITY THAT ARE EXEMPT FROM PERMITTING UNDER VARIOUS PROVISIONS OF RCRA. DATA RELATED TO THESE COMPONENTS IS PROVIDED FOR INFORMATIONAL PURPOSES AND LEASE OF REVIEW ONLY, AND THEY ARE NOT INTENDED TO EXCEED REGULATED COMPONENTS OF THE HAZARDOUS WASTE FACILITY.

5	2/25/12	NAME CHANGED TO SIEMENS INDUSTRY, INC.	JBE	KEM
4	2/22/12	UPDATED FOR PERMIT SUBMITTAL	JBE	KEM
3	1/10/01	REVISED FOR RORA PART B PERMIT SUBMITTAL	JBE	---
2	12/08/96	AS BUILT	TGB	
1	4/11/96	GENERAL REVISIONS	ALL	KEM
REV.	DATE	REVISION DESCRIPTION	DRAWN	CHK'D
				ENGR

<p>SIEMENS INDUSTRY, INC.</p>	<p>SIEMENS INDUSTRY, INC. Parker, AZ</p>
<p>LOCATION:</p>	

2523 MUTAHAR ST.	TITLE
------------------	-------

PROJECT No.	11135
PARKER, AL	05344
REACTIVATION FACILITY	
PRODUCT HANDLING SYSTEM	

DRAWN:	AWJ	1/14/96
--------	-----	---------

PIPING & INSTRUMENTATION DIAGRAM

CHK'D:	KEM	1/14/96	
ENG'R:			
PART No.	DWG No.	M1135-218	REV. 5