

PERMIT ATTACHMENT
APPENDIX XIII
CONTINGENCY PLAN

Changes made to April 2016 Permit Application Appendix XIII were as follows:

- Table 1-4 have been added from the April 2012 application since they were missing from the April 2016 version.
- U.S. Environmental Protection Agency Region IX, 24-Hour Environmental Emergencies, (800) 300-2193 was added and replaced 415-972-4400 which is outdated and no longer active.

September 2018

TABLE OF CONTENTS

<u>SECTION</u>	<u>PAGE</u>
1.0 INTRODUCTION.....	1
2.0 GENERAL INFORMATION	2
2.1 FACILITY NAME AND LOCATION	2
2.2 FACILITY OWNER AND OPERATOR	3
2.3 FACILITY OPERATIONS.....	3
2.4 NATURE OF WASTES	3
3.0 THE CONTINGENCY PLAN	6
3.1 COPIES.....	6
3.2 AMENDMENTS.....	6
3.3 TRAINING	6
4.0 RESPONSIBLE AGENCIES	7
4.1 OFF-SITE RESPONSE AGENCIES.....	7
4.2 OFF-SITE MEDICAL ASSISTANCE	7
4.3 OTHER EMERGENCY CONTACTS.....	8
5.0 EMERGENCY COORDINATOR	9
5.1 EMERGENCY COORDINATOR AND ALTERNATE.....	9
5.2 EMERGENCY COORDINATOR RESPONSIBILITIES.....	9
6.0 EMERGENCY EQUIPMENT	13
6.1 FIRE EXTINGUISHERS.....	13
6.2 FIRE SPRINKLERS	13
6.3 SPILL CONTROL EQUIPMENT.....	13
6.4 COMMUNICATIONS EQUIPMENT	13
6.5 ALARM SYSTEMS.....	14

6.6	DECONTAMINATION EQUIPMENT	14
6.7	OTHER EMERGENCY EQUIPMENT	14
7.0	EMERGENCY RESPONSE PROCEDURES	16
7.1	EXPLOSIONS AND/OR FIRES.....	16
7.2	RELEASES OF HAZARDOUS WASTE	17
7.3	PERSONAL INJURY.....	21
8.0	EVACUATION PROCEDURES.....	22
8.1	EVACUATION ALERT	22
8.2	EVACUATION SITUATIONS	22
9.0	REPORTING AND RECORDKEEPING REQUIREMENTS	23
9.1	OFF-SITE THREATS [40 CFR 264.56(D)].....	23
9.2	OPERATING RECORD [40 CFR 264.54, 264.56(I)]	23
9.3	INCIDENT REPORTING [40 CFR 264.56(I)]	23
9.4	RELEASES TO THE ENVIRONMENT	24

LIST OF TABLES

<u>Table</u>	<u>Is on or Follows Page</u>
2-1	HAZARDOUS WASTES RECEIVED AT THE PARKER FACILITY..... 4
2-2	ORGANIC CONSTITUENT RANGES FOR SPENT ACTIVATED CARBON..... 4
2-3	METAL CONSTITUENT RANGES FOR SPENT ACTIVATED CARBON
6-1	EMERGENCY EQUIPMENT

LIST OF APPENDICES

Appendix

- A RESPONSE AGENCY AGREEMENTS
- B EMERGENCY RESPONSE PROCEDURES
- C SITE PLAN
- D LOCATION OF EMERGENCY EQUIPMENT
- E EVACUATION ROUTES

1.0 INTRODUCTION

The Evoqua Water Technologies (EWT) facility is designed, constructed, maintained, and operated to minimize the possibility of a fire, explosion, or any unplanned sudden or non-sudden release of hazardous waste or hazardous waste constituents to air, soil, or surface water which could threaten human health or the environment. These conditions are referred to as “emergency situations” throughout this plan.

This Contingency Plan is designed to minimize hazards to human health or the environment in the event of such fires, explosions, or unplanned sudden or non-sudden releases of hazardous waste or hazardous waste constituents to air, soil, or surface water. The provisions of the plan will be carried out immediately whenever such an emergency occurs which could threaten human health or the environment outside the facility boundaries.

The contents of the Contingency Plan are based upon, and meet all criteria set forth in, 40 CFR 264 Subpart D and 40 CFR Part 270.

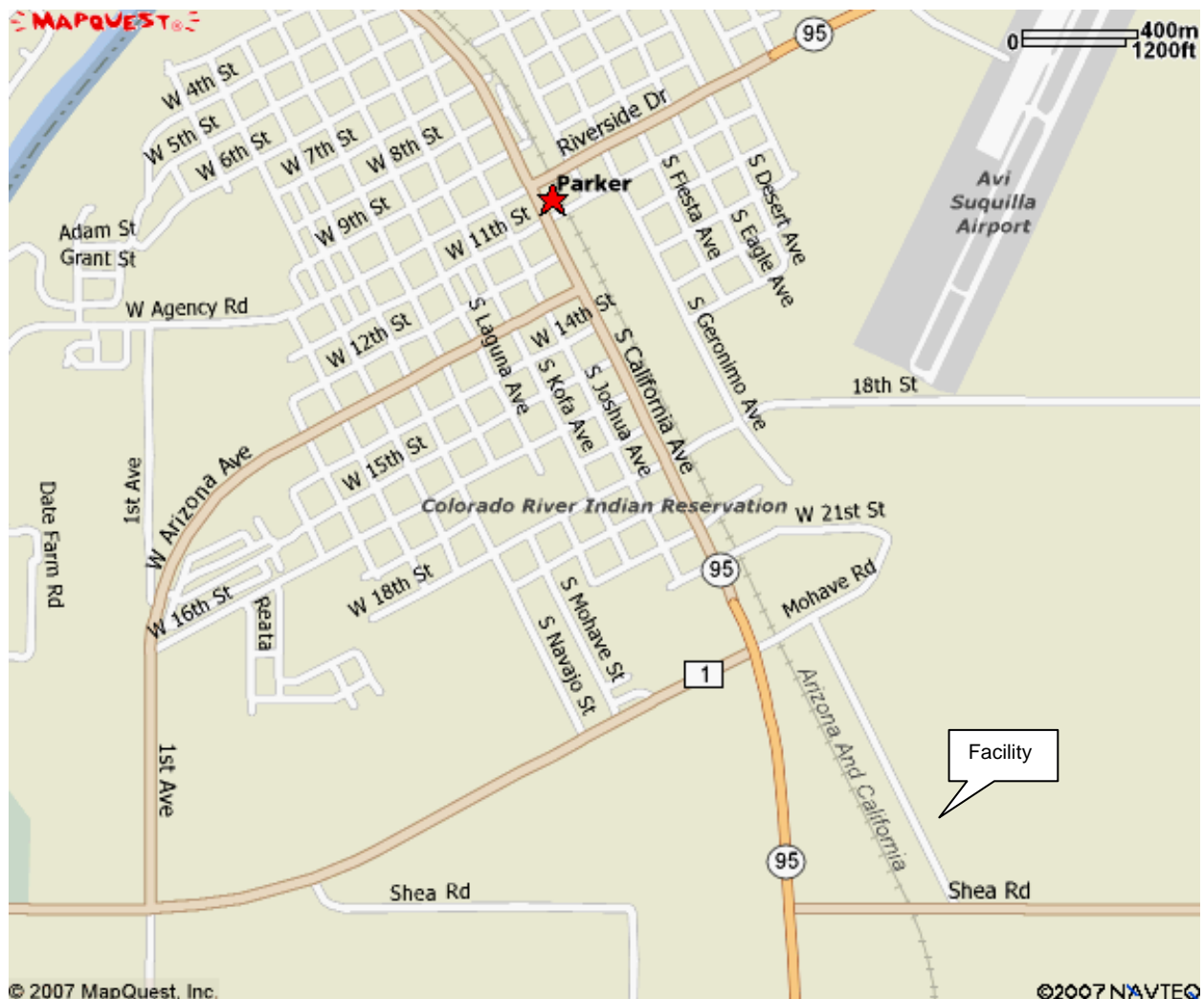
2.0 GENERAL INFORMATION

2.1 FACILITY NAME AND LOCATION

Evoqua Water Technologies
EPA Identification Number – AZD 982 441 263
2523 Mutahar Street
Parker, Arizona 85344
Phone: (928) 669-5758
Fax: (928) 669-5775

Contact: Monte McCue, Director of Plant Operations

The facility is located in the CRIT Industrial Park. A map showing the location is shown below.



2.2 FACILITY OWNER AND OPERATOR

The facility owner and operator is Evoqua Water Technologies. The property on which the facility is located is owned by the Colorado River Indian Tribes.

2.3 FACILITY OPERATIONS

Evoqua Water Technologies operates a facility for storage and treatment (reactivation) of used (or "spent") activated carbon. Activated carbon contaminated with a variety of wastes is received and stored at the facility prior to reactivation. Reactivation of spent carbon is currently accomplished in one reactivation unit (RF-2). The facility's capacity during interim status is limited to 2,760 pounds of spent carbon feed per hour.

The reactivation unit will be equipped with an afterburner for the purpose of destroying organic constituents in the off-gas. It will also be equipped with a venturi scrubber for particulate matter control, a packed-bed scrubber for acid-gas control, and a wet electrostatic precipitator for additional particulate matter control. Blowdown from the packed-bed scrubber is permitted for discharge to the local publicly-owned treatment works.

A site plan of the facility is provided in Appendix C. Drawing No. D14789-08 Rev 1 depicts the layout of the facility.

2.4 NATURE OF WASTES

2.4.1 CATEGORIES OF SPENT CARBON

The facility treats spent activated carbon that has typically been used for treating industrial and municipal wastewater, groundwater, surface water, process materials, or for air pollution control.

Constituents in the streams being treated are transported into the porous activated carbon particles by diffusion, where they are adsorbed onto the extensive inner surfaces of the activated carbon. Adsorption continues until the adsorption equilibrium capacity is reached, at which time the influent and effluent concentrations of the constituents in the stream being treated will be equal. However, the purpose of the treatment is to reduce the concentration of certain constituents in the stream being treated and, therefore, it is necessary to replace the activated carbon in the adsorption vessel at or before the point in time when the effluent concentration approaches the treatment objective, which is usually before the activated carbon's equilibrium capacity is reached. The treatment objective is reached either when the activated carbon has been in service for a specified time or when a pre-determined constituent concentration is detected in the effluent stream. The activated carbon is said to be "spent" when the treatment objective is met. Because the treatment objective is to reduce the concentration of certain constituents in the stream being treated, generally only part of the carbon in the adsorption vessel will have reached its equilibrium capacity. Spent

carbon can contain approximately 0.3 pounds of adsorbed material per pound of dry carbon at equilibrium capacity.

2.4.2 SPENT CARBON CONSTITUENTS AND EXPECTED CONCENTRATIONS

The facility treats spent activated carbon that has typically been used for treating industrial and municipal wastewater, groundwater, surface water, process materials, or for air pollution control. Constituents in the streams being treated are adsorbed onto the surface and into the internal pores of the activated carbon. The activated carbon is said to be “spent” when it has adsorbed a certain amount of chemicals. The amount of constituents adsorbed will vary from application to application. Historically, the average organic loading data indicate a range of 0.0038 to 0.0071 pounds of organic per pound of dry carbon, with an overall weighted average of 0.0055 pounds of organic per pound of dry carbon.

The number of different regulated constituents adsorbed on the activated carbon from a given source depends on the composition of the stream being treated. The list of organic constituents that may be adsorbed on spent carbon is very extensive, and includes, but is not limited to, volatile organic compounds, polynuclear aromatic hydrocarbons, phthalates, amines, and pesticides. Activated carbon is not customarily used to remove metals from a waste stream, although, low concentrations may be expected in the spent carbon. Actual facility data for the spent activated carbon is included in Tables 2-2 and 2-3. The spent activated carbon will be received, stored and handled as per the Waste Analysis Plan located in the facility’s RCRA Part B permit application. The facility will not accept spent carbon containing TSCA-regulated levels of PCBs, infectious wastes, regulated levels of radioactive wastes (as regulated by the Nuclear Regulatory Commission) or spent carbon exhibiting the characteristics of corrosivity or reactivity. Additionally, EWT will not accept spent activated carbon that is classified as a dioxin-listed hazardous wastes (i.e., those carrying EPA Waste Codes F020, F021, F022, F023, F026, and F027).

The generator of the spent carbon and EWT are required to characterize the spent carbon before it is accepted at the facility. EWT will determine whether a particular spent carbon is manageable at the facility based on a review of the pre-acceptance characterization and the generator's determination of the EPA hazardous waste code. Criteria for acceptance of a particular spent carbon are discussed in the Waste Analysis Plan which can be found in Appendix IV of the facility's RCRA Part B permit application. The complete list of RCRA-regulated waste codes acceptable for reactivation at the facility is provided in Table 2-1.

Activated carbon is not customarily used to remove metals from a waste stream, although, low concentrations may be encountered in the spent carbon.

Lists of constituent concentrations (range and mean) expected to be found on spent carbons is provided in Table 2-2 and in Table 2-3. These lists are offered for informational purposes only and are not intended to define the range of constituents, or constituent concentrations that may be received at the facility.

2.4.3 EXPECTED SPENT CARBON HAZARDOUS CHARACTERISTICS

In order for the facility to properly store, manage and treat spent carbon, the hazardous characteristics of the spent carbon need to be identified. The nature and extent of these characteristics guide employee health and safety programs and determine management strategies.

Hazardous characteristics of corrosivity, ignitability, reactivity, and toxicity are defined at 40 CFR Part 261. Spent carbon characterized by the generator as corrosive or reactive is not accepted at the facility.

Spent carbon characterized by the generator as ignitable may be accepted by the facility. Any ignitable waste received by the facility will be mixed with the motive water that is required to transfer the spent carbon into tank storage prior to reactivation to reduce the ignitability of the waste prior to introduction into tank storage and reactivation.

2.4.4 ACCEPTABLE REGULATED WASTES

The hazardous waste codes acceptable for reactivation at the facility are listed and defined in Table 2-1. The complete list of RCRA-regulated wastes that may be adsorbed onto the activated carbon to be processed at the facility is provided in this table. D-series wastes are characteristic wastes, F-series wastes are from non-specific sources, K-series wastes are from specific sources, P-series wastes are acutely hazardous commercial chemical products, and U-series wastes are toxic commercial chemical products.

The only type of waste that the reactivation facility will accept is spent carbon. The facility will not accept spent carbon containing Toxics Substance Control Act (TSCA) - regulated levels of polychlorinated biphenyls (PCBs), F listed dioxin wastes, infectious wastes, radioactive wastes (as regulated by the Nuclear Regulatory Commission) or spent carbon exhibiting the characteristics of corrosivity or reactivity.

TABLE 2-1 -- HAZARDOUS WASTES RECEIVED AT THE PARKER FACILITY

EPA WASTE CODE	WASTE DESCRIPTION
D001	A SOLID WASTE THAT EXHIBITS THE CHARACTERISTIC OF IGNITABILITY
D004	ARSENIC
D005	BARIUM
D006	CADMIUM
D007	CHROMIUM
D008	LEAD
D009	MERCURY
D010	SELENIUM
D011	SILVER
D012	ENDRIN
D013	LINDANE
D014	METHOXYCHLOR
D015	TOXAPHENE
D016	2,4-D
D017	2,4,5-(SILVEX)
D018	BENZENE
D019	CARBON TETRACHLORIDE
D020	CHLORDANE
D021	CHLOROBENZENE
D022	CHLOROFORM
D023	O-CRESOL
D024	M-CRESOL
D025	P-CRESOL
D026	CRESOL
D027	1,4-DICHLOROBENZENE
D028	1,2-DICHLOROETHANE
D029	1,1-DICHLOROETHYLENE
D030	2,4-DITROTOLUENE
D031	HEPTACHLOR (AND ITS EPOXIDE)
D032	HEXACHLOROBENZENE
D033	HEXACHLOROBUTADIENE
D034	HEXACHLOROETHANE
D035	METHYL ETHYL KETONE
D036	NITROBENZENE
D037	PENTRACHLOROPHENOL

TABLE 2-1 -- HAZARDOUS WASTES RECEIVED AT THE PARKER FACILITY

EPA WASTE CODE	WASTE DESCRIPTION
D038	PYRIDINE
D039	TETRACHLOROETHYLENE
D040	TRICHLOROETHYLENE
D041	2,4,5-TRICHLOROPHENOL
D042	2,4,6-TRICHLOROPHENOL
D043	VINYL CHLORIDE
F001	SPENT HALOGENATED SOLVENTS USED IN DEGREASING: TETRACHLOROETHYLENE, TRICHLOROETHYLENE, METHYLENE CHLORIDE, 1,1,1-TRICHLOROETHANE, CARBON TETRACHLORIDE, CHLORINATED FLUOROCARBONS; AND MIXTURES/BLENDS CONTAINING A TOTAL OF TEN PERCENT OR MORE (BY VOLUME) BEFORE USE OF ONE OR MORE OF THE ABOVE SOLVENTS OR SOLVENTS LISTED IN F002, F004 AND F005; AND STILL BOTTOMS FROM THE RECOVERY OF SPENT SOLVENTS AND MIXTURES
F002	TETRACHLOROETHYLENE, METHYLENE CHLORIDE, TRICHLOROETHYLENE, 1,1,1-TRICHLOROETHANE, CHLOROBENZENE, 1,1,2-TRICHLOROETHANE; AND MIXTURES/BLENDS CONTAINING A TOTAL OF 10% OR MORE (BY VOLUME) BEFORE USE OF ONE OR MORE OF THE ABOVE SOLVENTS OR SOLVENTS LISTED IN F002, F004 AND F005 AND STILL BOTTOMS FROM RECOVERY OF SPENT SOLVENTS AND MIXTURES
F003	XYLENE, ACETONE ETHYL ACETATE, ETHYL BENZENE, ETHYL ETHER, METHYL ISOBUTYL KETONE, N-BUTYL ALCOHOL, CYCLOHEXANANE, METHANOL; MIXTURES/BLENDS OF ABOVE; AND 10% OR MORE (BY VOLUME) OF F001, F002, F004, F005; AND STILL BOTTOMS FROM RECOVERY OF SPENT SOLVENTS
F004	CRESOLS AND CRESYLIC ACID, NOTROBENZENE; SOLVENT MIXTURES/BLENDS OF 10% OR MORE BEFORE USE OF ONE OR MORE OF ABOVE OR F001, F002, F005; STILL BOTTOMS FROM RECOVERY OF SPENT SOLVENTS
F005	TOLUENE, METHYL ETHYL KETONE, CARBON DISULFIDE, ISOBUTANOL, PYRIDINE, BENZENE, 2-ETHOXYETHANOL, 2-NITROPROPANE; MIXTURES/BLENDS OF 10% OR MORE (BY VOLUME) OF ABOVE OR SOLVENTS LISTED IN F001, F002, F004 AND STILL BOTTOMS FROM RECOVERY OF SOLVENTS
F006	WASTEWATER TREATMENT SLUDGES FROM ELECTROPLATING OPERATIONS EXCEPT FROM SULFURIC ACID ANODIZING OF ALUMINUM; TIN PLATING ON CARBON STEEL; ZINC PLATING ON CARBON STEEL; ALUMINUM, ZINC ALUMINUM PLATING ON CARBON STEEL; CLEANING/STRIPPING ASSOCIATED WITH TIN, ZINC AND ALUMINUM PLATING ON CARBON STEEL; AND CHEMICAL ETCHING AND MILLING OF ALUMINUM
F012	QUENCHING WASTEWATER TREATMENT SLUDGES FROM METAL HEAT TREATING OPERATIONS WHERE CYANIDES ARE USED
F019	WASTEWATER TREATMENT SLUDGES FROM CHEMICAL CONVERSION COATING OF ALUMINUM EXCEPT ZIRCONIUM PHOSPHATING IN ALUMINUM CAN WASHING

TABLE 2-1 -- HAZARDOUS WASTES RECEIVED AT THE PARKER FACILITY

EPA WASTE CODE	WASTE DESCRIPTION
F025	CONDENSED LIGHT ENDS, SPENT FILTERS AND AIDS, SPENT DESICCANT WASTES FROM PRODUCTION OF CERTAIN CHLORINATED ALIPHATIC HYDROCARBONS (HAVING CARBON CHAIN LENGTHS RANGING FROM 1-5 WITH VARYING AMOUNTS AND POSITIONS OF CHLORINE SUBSTITUTION) BY FREE RADICAL CATALYZED PROCESSES.
F035	WASTEWATERS, PROCESS RESIDUALS, PRESERVATIVE DRIPPAGE, AND SPENT FORMULATIONS FROM WOOD PRESERVING PROCESS GENERATED AT PLANTS THAT USE INORGANIC PRESERVATIVES CONTAINING ARSENIC OR CHROMIUM. DOES NOT INCLUDE K001 BOTTOM SEDIMENT SLUDGE FROM TREATMENT OF WASTEWATER FROM WOOD PRESERVING PROCESSES USING CREOSOTE AND/OR PENTACHLOROPHENOL
F037	PETROLEUM REFINERY PRIMARY OIL/WATER/SOLIDS SEPARATION SLUDGE. SLUDGE FROM GRAVITATIONAL SEPARATION OF OIL/WATER/SOLIDS DURING STORAGE OR TREATMENT OF PROCESS WASTEWATERS AND OILY COOLING WASTEWATERS FROM PETROLEUM REFINERIES. (OIL/WATER/SOLIDS SEPARATORS; TANKS AND IMPOUNDMENTS; DITCHES/CONVEYANCES; SUMPS; STORMWATER UNITS. SLUDGES FROM NON-CONTACT ONCE-THROUGH COOLING WATERS, SLUDGES FROM AGGRESSIVE BIOLOGICAL TREATMENT UNITS, K051 WASTES
F038	PETROLEUM REFINERY SECONDARY (EMULSIFIED) OIL/WATER/SOLIDS SEPARATION SLUDGE-ANY SLUDGE AND/OR FLOAT GENERATED FROM THE PHYSICAL AND/OR CHEMICAL SEPARATION OF OIL/WATER/SOLIDS IN PROCESS WASTEWATERS AND OILY COOLING WASTEWATERS FROM PETROLEUM REFINERIES. SUCH WASTES INCLUDE, BUT ARE NOT LIMITED TO, ALL SLUDGES AND FLOATS GENERATED IN: INDUCED AIR FLOTATION (IAF) UNITS, TANKS AND IMPOUNDMENTS, AND ALL SLUDGES GENERATED IN DAF UNITS. SLUDGES GENERATED IN STORMWATER UNITS THAT DO NOT RECEIVE DRY WEATHER FLOW, SLUDGES GENERATED FROM NON-CONTACT ONCE-THROUGH COOLING WATERS SEGREGATED FOR TREATMENT FROM OTHER PROCESS OR OILY COOLING WATERS, SLUDGES AND FLOATS GENERATED IN AGGRESSIVE BIOLOGICAL TREATMENT UNITS (INCLUDING SLUDGES AND FLOATS GENERATED IN ONE OR MORE ADDITIONAL UNITS AFTER WASTEWATERS HAVE BEEN TREATED IN AGGRESSIVE BIOLOGICAL TREATMENT UNITS) AND F037, K048, AND K051 WASTES ARE NOT INCLUDED IN THIS LISTING.
F039	LEACHATE FROM DISPOSAL OF MORE THAN ONE RESTRICTED WASTE CLASSIFIED AS HAZARDOUS UNDER SUBPART D; (LEACHATE RESULTING FROM THE DISPOSAL OF ONE OR MORE OF THE FOLLOWING EPA HAZARDOUS WASTES AND NO OTHER HAZARDOUS WASTES, RETAINS ITS EPA HAZARDOUS WASTE NUMBER(S): F020, F021, F022, F026, F027, AND/OR F028.)
K001	WASTEWATER TREATMENT SLUDGE BOTTOM SEDIMENT THAT USE CREOSOTE AND/OR PENTACHLOROPHENOL
K002	WASTEWATER TREATMENT SLUDGE FROM PRODUCTION OF CHROME YELLOW AND ORANGE PIGMENTS
K003	WASTEWATER TREATMENT SLUDGE FROM PRODUCTION OF MOLYBDATE ORANGE PIGMENTS

TABLE 2-1 -- HAZARDOUS WASTES RECEIVED AT THE PARKER FACILITY

EPA WASTE CODE	WASTE DESCRIPTION
K004	WASTEWATER TREATMENT SLUDGE FROM PRODUCTION OF ZINC YELLOW PIGMENTS
K005	WASTEWATER TREATMENT SLUDGE FROM PRODUCTION OF CHROME GREEN PIGMENTS
K006	WASTEWATER TREATMENT SLUDGE FROM PRODUCTION OF CHROME OXIDE GREEN PIGMENTS (ANHYDROUS AND HYDRATED)
K007	WASTEWATER TREATMENT SLUDGE FROM PRODUCTION OF IRON BLUE PIGMENTS
K008	OVEN RESIDUE FROM PRODUCTION OF CHROME OXIDE GREEN PIGMENTS
K009	DISTILLATION BOTTOMS FROM THE PRODUCTION OF ACETALDEHYDE FROM ETHYLENE
K010	DISTILLATION SIDE CUTS FROM PRODUCTION OF ACETALDEHYDE FROM ETHYLENE
K014	VICINALS FROM THE PURIFICATION OF TOLUENEDIAMINE IN THE PRODUCTION OF TOLUENEDIAMINE VIA THE HYDROGENATION OF DINITROTOLUENE
K015	STILL BOTTOMS FROM DISTILLATION OF BENZYL CHLORIDE
K016	HEAVY ENDS OR DISTILLATION RESIDUES FROM PRODUCTION OF CARBON TETRACHLORIDE
K017	HEAVY ENDS (STILL BOTTOMS) FROM PURIFICATION COLUMN IN PRODUCTION OF EPICHLOROHYDRIN
K018	HEAVY ENDS FROM FRACTIONATION COLUMN IN ETHYL CHLORIDE PRODUCTION
K019	HEAVY ENDS FORM THE DISTILLATION OF ETHYLENE DICHLORIDE IN ETHYLENE DICHLORIDE PRODUCTION
K020	HEAVY ENDS FROM DISTILLATION OF VINYL CHLORIDE IN VINYL CHLORIDE MONOMER PRODUCTION
K022	DISTILLATION BOTTOM TARS FROM PRODUCTION OF PHENOL/ACETONE FROM CUMENE
K023	DISTILLATION LIGHT ENDS FROM PRODUCTION OF PHTHALIC ANHYDRIDE FROM NAPHTHALENE
K024	DISTILLATION BOTTOMS FROM PRODUCTION OF PHTHALIC ANHYDRIDE FROM NAPHTHALENE
K025	DISTILLATION BOTTOMS FROM THE PRODUCTION OF NITROBENZENE BY THE NITRATION OF BENZENE
K026	STRIPPING STILL TAILS FROM PRODUCTION OF METHY ETHYL PYRIDINES
K029	WASTE FROM PRODUCT STEAM STRIPPER IN PRODUCTION OF 1,1,1-TRICHLOROETHANE
K030	COLUMN BOTTOMS OR HEAVY ENDS FROM COMBINED PRODUCTION OF TRICHLOROETHYLENE AND PERCHLOROETHYLENE
K031	BY-PRODUCT SALTS GENERATED IN PRODUCTION OF MSMA AND CACODYLIC ACID
K032	WASTEWATER TREATMENT SLUDGE FROM PRODUCTION OF CHLORDANE

TABLE 2-1 -- HAZARDOUS WASTES RECEIVED AT THE PARKER FACILITY

EPA WASTE CODE	WASTE DESCRIPTION
K033	WASTEWATER TREATMENT AND SCRUB WATER FROM CHLORINATION OF CYCLOPENTADIENE IN PRODUCTION OF CHLORDANE
K034	FILTER SOLIDS FROM FILTRATION OF HEXACHLOROCYCLOPENTADIENE IN PRODUCTION OF CHLORDANE
K035	WASTEWATER TREATMENT SLUDGES GENERATED IN PRODUCTION OF CREOSOTE
K036	STILL BOTTOMS FROM TOLUENE RECLAMATION DISTILLATION IN PRODUCTION OF DISULFOTON
K037	WASTEWATER TREATMENT SLUDGES FROM PRODUCTION DISULFOTON
K038	WASTEWATER FROM WASHING AND STRIPPING OF PHORATE PRODUCTION
K039	FILTER CAKE FROM FILTRATIN OF DIETHYLPHOSPHORODITHIOIC ACID IN PRODUCTION OF PHORATE
K040	WASTEWATER TREATMENT SLUDGE FROM PRODUCTION OF PHORATE
K041	WASTEWATER TREATMENT SLUDGE FORM PRODUCTION OF TOXAPHENE
K042	HEAVY ENDS OR DISTILLATION RESIDUES FROM DISTILLATION OF TETRACHLOROBENZENE IN PRODUCTION OF 2,4,5-T
K046	WASTEWATER TREATMENT SLUDGES FROM THE MANUFACTURING, FORMULATION AND LOADING OF LEAD-BASED INITIATING COMPOUNDS.
K048	DISSOLVED AIR FLOTATION FLOAT FROM PETROLEUM REFINING INDUSTRY
K049	SLOP OIL EMULSION SOLIDS FROM PETROLEUM REFINING INDUSTRY
K050	HEAT EXCHANGER BUNDLE CLEANING SLUDGE FROM PETROLEUM REFINING INDUSTRY
K051	API SEPARATOR SLUDGE FROM PETROLEUM REFINING INDUSTRY
K052	TANK BOTTOMS (LEADED) FROM PETROLEUM REFINING INDUSTRY
K061	EMISSION CONTROL DUST/SLUDGE FROM PRIMARY PRODUCTION OF STEEL IN ELECTRIC FURNACES
K064	ACID PLANT BLOWDOWN SLURRY/SLUDGE RESULTING FROM THE THICKENING OF BLOWDOWN SLURRY FROM PRIMARY COPPER PRODUCTION
K065	SURFACE IMPOUNDMENT SOLIDS CONTAINED IN AND DREDGED FROM SURFACE IMPOUNDMENTS AT PRIMARY LEAD SMELTING FACILITIES.
K066	SLUDGE FROM TREATMENT OF PROCESS WASTEWATER AND/OR ACID PLANT BLOWDOWN FROM PRIMARY ZINC PRODUCTION
K071	BRINE PURIFICATION MUDS FROM MERCURY CELL PROCESS IN CHLORINE PRODUCTION WHERE SEPARATELY PREPURIFIED BRINE IS NOT USED
K073	CHLORINATED HYDROCARBON WASTE FROM PURIFICAITON STEP OF THE DIAPHRAGM CELL PROCESS USING GRAPHITE ANODES IN CHLORINE PRODUCTION
K083	DISTILLATION BOTTOMS FROM ANILINE PRODUCTION
K084	WASTEWATER TREATMENT SLUDGES GENERATED DURING PRODUCTION OF VETERINARY PHARMACEUTICALS FROM ARSENIC OR ORGANO-ARSENIC COMPOUNDS

TABLE 2-1 -- HAZARDOUS WASTES RECEIVED AT THE PARKER FACILITY	
EPA WASTE CODE	WASTE DESCRIPTION
K085	DISTILLATION OR FRACTIONATION COLUMN BOTTOMS FROM PRODUCTION OF CHLOROBENZENES
K086	SOLVENT WASHES AND SLUDGES, CAUSTIC WASHES AND SLUDGES, OR WATER WASHES AND SLUDGES FROM CLEANING TUBS AND EQUIPMENT USED IN FORMULATION OF INK FROM PIGMENTS, DRIERS, SOAPS, STABILIZERS CONTAINING CHROMIUM AND LEAD
K087	DECANTER TANK TAR SLUGE FROM COKING
K088	SPENT POTLINERS FROM PRIMARY ALUMINUM REDUCTION
K090	EMISSION CONTROL DUST OR SLUDGE FROM FERROCHROMIUMSILICON PRODUCTION
K091	EMISSION CONTROL DUST OR SLUDGE FROM FERROCHROMIUM PRODUCTION
K093	DISTILLAION LIGHT ENDS FROM PRODUCTION OF PHTHALIC ANHYDRIDE FROM ORTHO-XYLENE
K094	DISTILLATION BOTTOMS FROM PRODUCTION OF PHTHALIC ANHYDRIDE FROM ORTHO-XYLENE
K095	DISTILLAION BOTTOMS FROM PRODUCTION OF 1,1,1-TRICHLOROETHANE
K096	HEAVY ENDS FROM HEAVY ENDS COLUMN FROM PRODUCTION OF 1,1,1-TRICHLOROETHANE
K097	VACUUM STRIPPER DISCHARGE FROM CHLORDANE CHLORINATOR IN PRODUCTION OF CHLORDANE
K098	UNTREATED PROCESS WASTEWATER FROM PRODUCTION OF TOXAPHENE
K100	WASTE LEACHING SOLUTION FROM ACID LEACHING OF EMISSION CONTROL DUST/SLUDGE FROM SECONDARY LEAD SMELTING
K101	DISTILLATION TAR RESIDUES FROM DISTILLATIONOF ANILINE-BASED COMPOUNDS IN PRODUCTION OF VETERINARY PHARMACEUTICALS FROM ARSENIC OR ORGANO-ARSENIC COMPOUNDS
K102	RESIDUE FROM USE OF ACTIVATED CARBON FOR DECOLORIZATION IN PRODUCTION OF VETERINARY PHARMACEUTICALS FRO ARSENIC OR ORGANO-ARSENIC COMPOUNDS
K103	PROCESS RESIDUES FROM ANILINE EXTRACTION FROM PRODUCTIONOF ANILINE
K104	COMBINED WASTEWATER STREAMS GENERATED FROM NITROBENZENE/ANILINE PRODUCTION
K105	SEPARATED AQUEOUS STREAM FROM THE REACTOR PRODUCT WASHING STEP IN PRODUCTION OF CHLOROBENZENES
K106	WASTEWATER TREATMENT SLUDGE FROM MERCURY CELL PROCESS IN CHLORINE PRODUCTION
K112	REACTION BY-PRODUCT WATER FROM THE DRYING COLUMN IN PRODUCTION OF TOLUENEDIAMINE VIA HYDROGENATION OF DINITROTOLUENE
K113	CONDENSED LIQUID LIGHT ENDS FROM THE PURIFICATIONOF TOLUENEDIAMINE IN PRODUCTION OF TOLUENEDIAMINE VIA HYDROGENATION OF DINITROTOLUENE

TABLE 2-1 -- HAZARDOUS WASTES RECEIVED AT THE PARKER FACILITY

EPA WASTE CODE	WASTE DESCRIPTION
K114	VICINALS FROM PURIFICATION OF TOLUENEDIAMINE IN PRODUCTION OF TOLUENEDIAMINE VIA HYDROGENATION OF DINITROTOLUENE
K115	HEAVY ENDS FROM THE PURIFICATION OF TOLUENEDIAMINE IN PRODUCTION OF TOLUENEDIAMINE VIA HYDROGENATION OF DINITROTOLUENE
K116	ORGANIC CONDENSATE FROM SOLVENT RECOVERY COLUMN IN PRODUCTION OF TOLUENE DIISOCYANATE VIA PHOSGENATION OF TOLUENEDIAMINE
K117	WASTEWATER FROM THE REACTOR VENT GAS SCRUBBER IN PRODUCTION OF ETHYLENE DIBROMIDE VIA BROMINATION OF ETHENE
K118	SPENT ADSORBENT SOLIDS FROM PURIFICATION OF ETHYLENE DIBROMIDE IN PRODUCTION OF ETHYLENE DIBROMIDE VIA BROMINATION OF ETHENE
K125	FILTRATION, EVAPORATION, AND CENTRIFUGATION SOLIDS FROM THE PRODUCTION OF ETHYLENEBISDITHIOCARBAMIC ACID AND ITS SALTS.
K126	BAGHOUSE DUST AND FLOOR SWEEPINGS IN MILLING AND PACKAGING OPERATIONS FROM PRODUCTION OR FORMULATION OF ETHYLENE BIS DITHIOCARBAMIC ACID AND ITS SALTS
P001	2H-1-BENZOPYRAN-2-ONE, 4-HYDROXY-3-(3-OXO-1-PHENYLBUTYL)-, & SALTS, WHEN PRESENT AT CONCENTRATIONS GREATER THAN 0.3% WARFARIN, & SALTS, WHEN PRESENT AT CONCENTRATIONS GREATER THAN 0.3%
P002	ACETAMINE, N-(AMINOTHIOXOMETHYL); Also known as 1-ACETYL-2-THIOUREA
P003	ACROLEIN; Also known as 2-PROPENAL
P004	ALDRIN; Also known as 1,4,5,8-DIMETHANONAPHTHALENE, 1,2,3,4,10,10-HEXA-CHLORO-1,4,4A,5,8,8A,-HEXAHYDRO, (ALPHA, 4ALPHA, 4 ABETA, 5 ALPHA, 8ALPHA, 8ABETA)-
P005	ALLYL ALCOHOL; Also known as 2-PROPEN-1-OL
P007	5-(AMINOMETHYL)-3-ISOXAZOLOL; Also known as 3(2H)-ISOXAZOLONE, 5-(AMINOMETHYL)-
P008	4-AMINOPYRIDINE; Also known as 4-PYRIDINAMINE
P010	ARSENIC ACID H_3AsO_4
P011	ARSENIC OXIDE As_2O_5 ; Also known as ARSENIC PENTOXIDE
P012	ARSENIC OXIDE As_2O_3 ; Also known as ARSENIC TRIOXIDE
P013	BARIUM CYANIDE
P014	BENZENETHIOL; Also known as THIOPHENOL
P015	BERYLLIUM
P016	DICHLOROMETHYL ETHER; Also known as METHANE, OXYBIS[CHLORO-
P017	BROMOACETONE; Also known as 2-PROPANONE, 1-BROMO-
P018	BRUCINE
P020	DIOSEB; Also known as PHENOL, 2-(1-METHYLPROPYL)-4,6-DINITRO-
P021	CALCIUM CYANIDE; Also known as CALCIUM CYANIDE $Ca(CN)_2$
P022	CARBON DISULFIDE

TABLE 2-1 -- HAZARDOUS WASTES RECEIVED AT THE PARKER FACILITY

EPA WASTE CODE	WASTE DESCRIPTION
P023	ACETALDEHYDE, CHLORO-; Also known as CHLOROACETALDEHYDE
P024	BENZENAMINE, 4-CHLORO-; Also known as P-CHLORANILINE
P026	1-(O-CHLOROPHENYL)THIOUREA; Also known as THIOUREA, (2-CHLOROPHENYL)-
P027	PROPANENITRILE, 3-CHLORO-; Also known as 3-CHLOROPROPIONITRILE
P028	BENZENE, (CHLOROMETHYL)-; Also known as BENZYL CHLORIDE
P029	COPPER CYANIDE; Also known as COPPER CYANIDE CU(CN)
P030	CYANIDES (SOLUBLE CYANIDE SALTS), NOT OTHERWISE SPECIFIED
P031	CYANOGEN; Also known as ETHANEDINITRILE
P033	CYANOGEN CHLORIDE; Also known as CYANOGEN CHLORIDE (CN)CL
P034	2-CYCLOHEXYL-4,6-DINITROPHENOL; Also known as PHENOL, 2-CYCLOHEXYL-4,6-DINITRO-
P036	ARSONOUS DICHLORIDE, PHENYL-; Also known as DICHLOROPHENYLARSINE
P037	DIELDRIN; Also known as 2,7:3,6-DIMETHANONAPHTH[2,3-B]OXIRENE, 3,4,5,6,9,9-HEXACHLORO-1A,2,2A,3,6,6A,7,7A-OCTAHYDRO-, (1AALPHA, 2BETS, 2AALPHA, 3BETAK, 6BETA, 6AALPHA, 7BETA, 7AALPHA)-
P038	ARSINE, DIETHYL-; Also known as DIETHYLARSINE
P039	PHOSPHORODITHIOIC ACID, O,O-DIETHYL S-[2-(ETHYLTHIO)ETHYL]ESTER; Also known as DISULFOTON
P040	O,O-DIETHYL O-PYRAZINYL PHOSPHOROTHIOATE; Also known as PHOSPHOROTHIOIC ACID, O, O-DIMETHYL O-(4 NITROPHENYL) ESTER
P041	PHOSPHORIC ACID, DIETHYL 4-NITROPHENYL ESTER; Also known as DIETHYL-P-NITROPHENYL PHOSPHATE
P042	1,2-BENZENEDIOL, 4-[HYDROXY-2-(METHYLAMINO)ETHYL]-,(R)-; Also known as EPINEPHRINE
P043	DIISOPROPYLFLUOROPHOSPHATE (DFP); Also known as PHOSPHOROFLUORIDIC ACID, BIS (1-METHYLETHYL)ESTER
P044	DIMETHOATE; Also known as PHOSPHORODITHIOIC ACID,O, O-DIMETHYL S-[2-(METHYLAMINO)-2-OXOETHYL]ESTER
P045	2-BUTANONE, 3, 3-DIMETHYL-1-(METHYITHIO)-,O-[METHYLOAMINO)CARBONYL]OXIME; Also known as THIOFANOX
P046	BENZENEETHANAMINE, ALPHA,ALPHA-DIMETHYL-; Also known as ALPHA,ALPHA-DIMETHYLPHENETHYLAMINE
P047	4,6-DINITRO-O-CRESOL, & SALTS; Also known as PHENOL,2-METHYL-4,6-DINITRO-, & SALTS
P048	2,4-DINITROPHENOL; Also known as PHENOL, 2,4-DINITRO-
P049	DITHIOBIURET; Also known as THIOIMIDODICARBONIC DIAMIDE [H ₂ N)C(S)] ₂ NH

TABLE 2-1 -- HAZARDOUS WASTES RECEIVED AT THE PARKER FACILITY

EPA WASTE CODE	WASTE DESCRIPTION
P050	ENDOSULFAN; Also known as 6M9-METHANO-2,4,3-BENZODIOXATHIEPIN, 6,7,8,9,10,1K0-HEXACHLORO-1,5,5A,6,9,91-HEXAHYDRO-,3-OXIDE
P051	2,7:3,6-DIMETHANONAPHTH [2,3-B]OXIRENE, 3,4,5,6,9,9-HEXACHLORO-1A,2,2A,3,6,6A,7,7A-OCTAHYDRO-, (1AALPHA, 2BETA, 2ABETA, 3ALPHA, 6ALPHA, 6ABETA, 7BETA, 7AALPHA)-, & METABOLITES; Also known as ENDRIN; Also known as ENDRIN, & METABOLITES
P054	AZIRIDINE; Also known as ETHYLENEIMINE
P056	FLUORINE
P057	ACETAMIDE, 2-FLUORO-; Also known as FLUOROACETAMIDE
P058	ACETIC ACID, FLUORO-,SODIUM SALT; Also known as FLUOROACETIC ACIDE, SODIUM SALT
P059	HEPTACHLOR; Also known as 4,7-METHANO-1H-INDENE, 1,4,5,6,7,8,-HEPTACHLORO-3A,4,7,7A-TETRAHYDRO-
P060	1,4,5,8-DIMETHANONAPHTHALENE,1,2,3,4,10,10-HEXA- CHLORO-1,4,4A,5,7,8,8A-HEXAHYDRO-(1ALPHA, 4ALPHA, 4ABETA, 5BETA,8BETA,8ABETA)-; Also known as ISODRIN
P062	HEXAETHYL TETRAPHOSPHATE; Also known as TETRAPHOSPHORIC ACID, HEXAETHYL ESTER
P063	HYDROCYANIC ACID; Also known as HYDROGEN CYANIDE
P064	METHANE, ISOCYANATO-
P066	ETHANIMIDOTHIOIC ACID, N-[[[(METHYLAMINO)CARBONYL]OXY]-, METHYL ESTER; Also known as METHOMYL
P067	AZINIDINE, 2-METHYL; Also known as 1,2-PROPYLENIMINE
P068	HYDRAZINE, METHYL-; Also known as METHYL HYDRAZINE
P069	2-METHYLLACTONITRILE; Also known as PROPANENITRILE, 2-HYDROXY-2-METHYL-
P070	ALDICARB; Also known as PROPANAL, 2-METHYL-2-(METHYLTHIO)-, O-[(METHYLAMINO)CARBONYL]OXIME
P071	METHYL PARATHION; Also known as PHOSPHOROTHIOIC ACID, O, O,-DIMETHYL O-(4-NITROPHENYL)ESTER
P072	ALPHA-NAPHTHYLTHIOUREA; Also known as THIOUREA, 1-NAPHTHALENYL-
P073	NICKEL CARBONYL; Also known as NICKEL CARBONYL NI(CO) ₄ , (T-4)-
P074	NICKEL CYANIDE; Also known as NICKEL CYNAIDE NI(CN) ₂
P075	NICOTINE, & SALTS; Also known as PYRIDINE, 3-(1-METHYL-2-PYRROLIDINYL)-, (S)-, & SALTS
P077	BENZENAMINE, 4-NITRO-; Also known as P-NITROANILINE
P078	NITROGEN DIOXIDE; Also known as NITROGEN OXIDE NO ₂
P082	METHANAMINE, N-METHYL-N-NITROSO-; Also known as N-NITROSODIMETHYLAMINE
P084	N-NITROSOMETHYLVINYLAMINE; Also known as VINYLAMINE, N-METHYL-N-NITROSO-

TABLE 2-1 -- HAZARDOUS WASTES RECEIVED AT THE PARKER FACILITY

EPA WASTE CODE	WASTE DESCRIPTION
P085	DIPHOSPHORAMIDE, OCTAMETHYL-; Also known as OCTAMETHYLPYROPHOSPHORAMIDE
P087	OSMIUM OXIDE OSO ₄ , (T-4)-; Also known as OSMIUM TETROXIDE
P088	ENDOTHALL; Also known as 7-OXABICYCLO[2.2.1]HEPTANE-2,3-DICARBOXYLIC ACID
P089	PARATHION; Also known as PHOSPHORIC ACID, O,O-DIETHYL O-(4-NITROPHENYL)ESTER
P092	MERCURY, (ACETATO-O)PHENYL-; Also known as PHENYLMERCURY ACETATE
P093	PHENYLTHIOUREA; Also known as THIOUREA, PHENYL-
P094	PHORATE; Also known as PHOSPHORODITHIOIC ACID, O,O-DIETHYL; Also known as S-[ETHYLTHIO)METHYL] ESTER
P095	CARBONIC DICHLORIDE; Also known as PHOSGENE
P096	HYDROGEN PHOSPHIDE; Also known as PHOSPHINE
P097	FAMPHUR; Also known as PHOSPHOTHIOIC ACID, O-[4-[(DIMETHYLAMINO)SULFONYL]PHENYL] O,O-DIMETHYL ESTER
P098	POTASSIUM CYANIDE
P099	ARGENTATE(1-), BIS(CYANO-C)-, POTASSIUM; Also known as POTASSIUM SILVER CYANIDE
P101	ETHYL CYANIDE; Also known as PROPANENITRILE
P102	PROPARGYL ALCOHOL; Also known as 1-PROPYN-1-OL
P103	SELENOUREA
P104	SILVER CYANIDE
P105	SODIUM AZIDE
P108	STRYCHNIDIN-10-ONE, & SALTS; Also known as STRYCHNINE, & SALTS
P109	TETRAETHYLDITHIOPYROPHOSPHATE; Also known as THIODIPHOSPHIRIC ACID, TETRAETHYL ESTER
P110	TETRAETHYL LEAD
P113	THALLIUM OXIDE TL ₂ O ₃
P114	THALLIUM(L) SELENITE
P115	THALLIUM(L) SULFATE
P116	THIOSEMICARBAZIDE
P118	TRICHLOROMETHANETHIOL
P119	VANADIC ACID, AMMONIUM SALT
P120	VANADIUM PENTOXIDE
P121	ZINC CYANIDE
P123	TOXAPHENE
U001	ACETALDEHYDE (I); Also known as ETHANAL (I)

TABLE 2-1 -- HAZARDOUS WASTES RECEIVED AT THE PARKER FACILITY

EPA WASTE CODE	WASTE DESCRIPTION
U002	ACETONE (I); Also known as 2-PROPANONE (I)
U003	ACETONITRILE (I,T)
U004	ACETONITRILE (I,T)
U005	2, ACETYLAMINOFLUORENE; Also known as ACETAMIDE, N-9H-FLUOREN-2-YL-
U007	ACRYLAMIDE; Also known as 2-PROPENAMIDE
U008	ACRYLIC ACID (I); Also known as 2-PROPENOIC ACID (I)
U009	ACRYLONITRILE; Also known as 2-PROPENENITRILE
U010	AZIRINO[2',3':3,4]PYRROLO[1,2-a]INDOLE-4,7-DIONE,6-AMINO-8- [[AMINOCARBONYLOXY]METHYL]-1,1a,2,8,8a,8b-HEXAHYDRO-8a-METHOXY-5- METHYL-, [1aS-(1AALPHA, 8BETA, 8AALPHA, 8BALPHA)]-; Also known as MITOMYCIN C
U011	AMITROLE; Also known as 1H-1,2,-TRIAZOL-3-AMINE
U012	ANILINE (I,T); Also known as BENZENAMINE (I,T)
U014	AURAMINE; Also known as BENZENAMINE, 4,4'-CARBONIMIDOYLBIS[N,N-DIMETHYL-
U015	AZASERINE; Also known as L-SERINE, DIAZOACETATE (ESTER)
U016	BENZ[C]ACRIDINE
U017	BENZAL CHLORIDE; Also known as BENZENE,(DICHLOROMETHYL)-
U018	BENZ[A]ANTHRACENE
U019	BENZENE (I,T)
U022	BENZO[A]PYRENE
U024	DICHLOROMETHOXY ETHANE; Also known as ETHANE, 1,1'-[METHYLENEBIS(OXY)]BIS[2-CHLORO-
U025	DICHLOROETHYL ETHER; Also known as ETHANE,1,1'-OXYBIS[2-CHLORO-
U026	CHLORNAPHAZIN; Also known as NAPHTHALENAMINE, N,N'-BIS(2-CHLOROETHYL)-
U027	DICHLOROISOPROPYL ETHER; Also known as PROPANE, 2,2'-OXYBIS[2-CHLORO-
U028	1,2-BENZENEDICARBOXYLIC ACID, BIS(2-ETHYLHEXYL) ESTER; Also known as DIETHYLHEXYL PHTHALATE
U029	METHANE, BROMO-; Also known as METHYL BROMIDE
U030	BENZENE, 1-BROMO-4-PHENOXY-; Also known as 4-BROMOPHENYL PHENYL ETHER
U031	1-BUTANOL (I); Also known as N-BUTYL ALCOHOL (I)
U032	CHROMIC ACID H ₂ CrO ₄ , CALCIUM SALT; Also known as CALCIUM CHROMATE
U034	CHLORAL; Also known as ACETALDEHYDE, TRICHLORO-
U035	CHLORAMBUCIL; Also known as BENZENE BUTANOIC ACID, 4-[BIS(2- CHLOROETHYL)AMINO]-
U036	CHLORDANE, ALPHA & GAMMA ISOMERS; Also known as 4,7-METHANO-1H-INDENE, 1,2,4,5,6,7,8,8-OCTACHLORO-2,3,3A,4,7,7A-HEXAHYDRO-
U037	CHLOROBENZENE; Also known as BENZENE, CHLORO-

TABLE 2-1 -- HAZARDOUS WASTES RECEIVED AT THE PARKER FACILITY

EPA WASTE CODE	WASTE DESCRIPTION
U038	CHLOROBENZILATE; Also known as BENZENEACETIC ACID, 4-CHLORO-ALPHA-(4-CHLOROPHENYL)-ALPHA-HYDROXY-, ETHYL ESTER
U039	P-CHLORO-M-CRESOL; Also known as PHENOL, 4-CHLORO-3-METHYL-
U041	EPICHLOROHYDRIN; Also known as OXIRANE, (CHLOROMETHYL)-
U042	2-CHLOROETHYL VINYL ETHER; Also known as ETHENE, (2-CHLOROETHOXY)-
U043	VINYL CHLORIDE; Also known as ETHENE, CHLORO-
U044	CHLOROFORM; Also known as METHANE, TRICHLORO-
U045	METHANE, CHLORO- (I,T); Also known as METHYL CHLORIDE (I,T)
U046	CHLOROMETHYL METHYL ETHER; Also known as METHANE, CHLOROMETHOXY-
U047	BETA-CHLORONAPHTHALENE; Also known as NAPHTHALENE, 2-CHLORO-
U048	O-CHLOROPHENOL; Also known as PHENOL, 2-CHLORO-
U049	4-CHLORO-O-TOLUIDINE, HYDROCHLORIDE; Also known as BENZENAMINE, 4-CHLORO-2-METHYL, HYDROCHLORIDE
U050	CHRYSENE
U051	CREOSOTE
U052	CRESOL (CRESYLIC ACID); Also known as PHENOL, METHYL-
U053	CROTONALDEHYDE; Also known as 2-BUTENAL
U055	CUMENE (I); Also known as BENZENE, (1-METHYLETHYL)- (I)
U056	BENZENE, HEXAHYDRO- (I); Also known as CYCLOHEXANE (I)
U057	CYCLOHEXANONE (I)
U058	CYCLOPHOSPHAMIDE; Also known as 2H-1,3,2-OXAZAPHOSPHORIN-2-AMINE, N,N-BIS (2-CHLOROETHYL)TETRAHYDRO-, 2-OXIDE
U059	DAUNOMYCIN; Also known as 5,12-NAPHTHACENEDIONE, 8-ACETYL-10-[(3-AMINO-2,3,6-TRIDEOXY)-ALPHS-L-LYXO-HEXOPYRANOSY)OXY]-7,8,9,10-TETRAHYDRO-6,8,11-TRIHIDROXY-1-METHOXY-, (8S-CIS)-
U060	DDD; Also known as BENZENE, 1,1'-(2,2-DICHLOROETHYLIDENE)BIS[4-CHLORO-
U061	DDT; Also known as BENZENE, 1,1'-(2,2,2-TRICHLOROETHYLIDENE)BIS[4-CHLORO-
U062	DIALATE; Also known as CARBAMOTHIOIC ACID, BIS(1-METHYLETHYL)-, S-(2,3-DICHLORO-2-PROPENYL) ESTER
U063	DIBENZ[A,H]ANTHRACENE
U064	DIBENZO[A,I]PYRENE; Also known as BENZO[RST]PENTAPHENE
U066	1,2-DIBROMO-3-CHLOROPROPANE; Also known as PROPANE, 1,2-DIBROMO-3-CHLORO-
U067	ETHANE, 1,2-DIBROMO-; Also known as ETHYLENE DIBROMIDE
U068	METHANE, DIBROMO-; Also known as METHYLENE BROMIDE

TABLE 2-1 -- HAZARDOUS WASTES RECEIVED AT THE PARKER FACILITY

EPA WASTE CODE	WASTE DESCRIPTION
U069	DIBUTYL PHTHALATE; Also known as 1,2-BENZENEDICARBOXYLIC ACID, DIBUTYL ESTER
U070	o-DICHLOROBENZENE; Also known as BENZENE, 1,2-DICHLORO-
U071	m-DICHLOROBENZENE; Also known as BENZENE, 1,3-DICHLORO-
U072	p-DICHLOROBENZENE; Also known as BENZENE, 1,4-DICHLORO-
U073	3,3'-DICHLOROBENZIDINE; Also known as [1,1'-BIPHENYL]-4,4'-DIAMINE, 3,3'DICHLORO-
U074	1,4-DICHLORO-2-BUTENE (I,T); Also known as 2-BUTENE, 1,4-DICHLORO- (I,T)
U075	DICHLORODIFLUOROMETHANE; Also known as METHANE, DICHLORODIFLUORO-
U076	ETHANE, 1,1-DICHLORO-; Also known as ETHYLIDENE DICHLORIDE
U077	ETHANE, 1,2-DICHLORO-; Also known as ETHYLENE DIBROMIDE
U078	1,1-DICHLOROETHYLENE; Also known as ETHENE, 1,1-DICHLORO-
U079	1,2-DICHLOROETHYLENE; Also known as ETHENE, 1,2-DICHLORO-, (E)
U080	METHANE, DICHLORO-; Also known as METHYLENE CHLORIDE
U081	2,4-DICHLOROPHENOL; Also known as PHENOL, 2,4-DICHLORO-
U082	2,6-DICHLOROPHENOL; Also known as PHENOL, 2,6-DICHLORO-
U083	PROPANE, 1,2-DICHLORO-; Also known as PROPYLENE DICHLORIDE
U084	1,3-DICHLOROPROPENE; Also known as 1-PROPENE, 1,3-DICHLORO-
U085	1,2:3,4--DIEPOXYBUTANE (I,T); Also known as 2,2'-BIOXIRANE
U086	N,N'-DIETHYLHYDRAZINE; Also known as HYDRAZINE, 1,2,-DIETHYL-
U087	O,O-DIETHYL S-METHYL DITHIOPHOSPHATE; Also known as PHOSPHORODITHIOIC ACID, 0,0-DIETHYL S-METHYL ESTER
U088	DIETHYL PHTHALATE; Also known 1,2-BENZENEDICARBOXYLIC ACID, DIETHYL ESTER
U089	DIETHYLSTILBESTEROL; Also known as PHENOL, 4,4'-(1,2-DIETHYL-1,2-ETHENEDIYL)BIS-, (E)
U090	DIHYDROSAFROLE; Also known as 1,3-BENZODIOXOLE, 5-PROPYL-
U091	3,3'-DIMETHOXYBENZIDINE; Also known as [1,1'-BIPHENYL]-4,4'-DIAMINE, 3,3'DIMETHOXY-
U092	DIMETHYLAMINE (I); Also known as METHANAMINE, N-METHYL- (I)
U093	BENZENAMINE, N,N-DIMETHYL-4-(PHENYLAZO)-; Also known as P-DIMETHYLAMINOAZOBENZENE
U094	BENZ[A]ANTHRACENE, 7,12-DIMETHYL-; Also known as 7,12-DIMETHYLBENZ[A]ANTHRACENE
U095	3,3'-DIMETHYLBENZIDINE; Also known as [1,1'-BIPHENYL]-4,4'-DIAMINE, 3,3'DIMETHYL-
U097	DIMETHYLCARBAMOYL CHLORIDE; Also known as CARBAMIC CHLORIDE, DIMETHYL-
U098	1,1-DIMETHYLHYDRAZINE; Also known as HYDRAZINE, 1,1-DIMETHYL-

TABLE 2-1 -- HAZARDOUS WASTES RECEIVED AT THE PARKER FACILITY

EPA WASTE CODE	WASTE DESCRIPTION
U099	1,2-DIMETHYLHYDRAZINE; Also known as HYDRAZINE, 1,2,-DIMETHYL-
U101	2,4-DIMETHYLPHENOL; Also known as PHENOL, 2,4-DIMETHYL-
U102	DIMETHYL PHTHALATE; Also known as 1,2-BENZENEDICARBOXYLIC ACID, DIMETHYL ESTER
U103	DIMETHYL SULFATE; Also known as SULFURIC ACID, DIMETHYL ESTER
U105	2,4-DINITROTOLUENE; Also known as BENZENE, 1-METHYL-2,4-DINITRO-
U106	2,6-DINITROTOLUENE; Also known as BENZENE, 2-METHYL-1,3-DINITRO-
U107	DI-N-OCTYL PHTHALATE; Also known as 1,2-BENZENEDICARBOXYLIC ACID, DIOCTYL ESTER
U108	1,4-DIETHYLENEOXIDE; Also known as 1,4-DIOXANE
U109	1,2-DIPHENYLHYDRAZINE; Also known as HYDRAZINE, 1,2-DIPHENYL-
U110	DIPROPYLAMINE (I); Also known as 1-PROPANAMINE, N-PROPYL- (I)
U111	DI-N-PROPYLNITROSAMINE; Also known as 1-PROPANAMINE, N-NITROSO-N-PROPYL-
U112	ACETIC ACID ETHYL ESTER (I); Also known as ETHYL ACETATE (I)
U113	ETHYL ACRYLATE (I); Also known as 2-PROPENOIC ACID, ETHYL ESTER (I)
U114	ETHYLENEBISDITHIOCARBAMIC ACID, SALTS & ESTERS; Also known as CARBAMODITHIOIC ACID, 1,2- ETHANEDIYLBIS-, SALTS & ESTERS
U115	ETHYLENE OXIDE (I,T); Also known as OXIRANE (I,T)
U116	ETHYLENETHIOUREA; Also known as 2-IMIDAZOLIDINETHIONE
U117	ETHANE, 1,1'-OXYBIS-(I); Also known as ETHYL ETHER (I)
U118	ETHYL METHACRYLATE; Also known as 2-PROPENOIC ACID, 2-METHYL-, ETHYL ESTER
U119	ETHYL METHANESULFONATE; Also known as METHANESULFONIC ACID, ETHYL ESTER
U120	FLUORANTHENE
U121	TRICHLOROMONOFUOROMETHANE; Also known as METHANE, TRICHLOROFLUORO-
U122	FORMALDEHYDE
U124	FURAN (I); Also known as FURFURAN (I)
U125	2-FURANCARBOXALDEHYDE (I); Also known as FURFURAL (I)
U126	GLYCIDYLALDEHYDE; Also known as OXIRANECARBOXYALDEHYDE
U127	HEXACHLOROBENZENE; Also known as BENZENE, HEXACHLORO-
U128	HEXACHLOROBUTADIENE; Also known as 1,3-BUTADIENE, 1,1,2,3,4,4-HEXACHLORO-
U129	LINDANE; Also known as CYCLOHEXANE, 1,2,3,4,5,6- HEXACHLORO-, (1ALPHA, 2ALPHA, 3BETA, 4ALPHA, 5ALPHA, 6BETA)-
U130	HEXACHLOROCYCLOPENTADIENE; Also known 1,3-CYCLOPENTADIENE, 1,2,3,4,5,5-HEXACHLORO-

TABLE 2-1 -- HAZARDOUS WASTES RECEIVED AT THE PARKER FACILITY

EPA WASTE CODE	WASTE DESCRIPTION
U131	HEXACHLOROETHANE; Also known as ETHANE, HEXACHLORO-
U132	HEXACHLOROPHENE; Also known as PHENOL, 2,2'-METHYLENEBIS[3,4,6-TRICHLORO-
U135	HYDROGEN SULFIDE; Also known HYDROGEN SULFIDE H ₂ S
U136	ARSINIC ACID, DIMETHYL-; Also known as CACODYLIC ACID
U137	INDENO[1,2,3-CD]PYRENE
U138	METHANE, IODO-; Also known as METHYL IODIDE
U140	ISOBUTYL ALCOHOL, (I,T); Also known as 1-PROPANOL, 2-METHYL-, (I,T)
U141	ISOSAFROLE; Also known as 1,3-BENZODIOXOLE, 5-(1-PROPENYL)-
U142	KEPONE; Also known as 1,3,4-METHENO-2H-CYCLOBUTA[CD]PENTALEN-2-ONE, 1,1A,3,3A,4,5,5A,5B,6- DECACHLOROOCCTAHYDRO-
U143	LASIOCARPINE; Also known as 2-BUTENOIC ACID, 2-METHYL-, 7-[2,3-DIHYDROXY-2-(1-METHOXYETHYL)-3-METHYL-1- OXOBUTOXY]METHYL]- 2,3,5,6A-TETRAHYDRO-1H-PYRROLIZIN-1-YL ESTER,[1S- 1ALPHA(Z),7(2S*,3R*),7AALPHA]]-
U144	ACETIC ACID, LEAD(2+) SALT; Also known as LEAD ACETATE
U145	LEAD PHOSPHATE; PHOSPHORIC ACID, LEAD(2+) SALT (2:3)
U146	LEAD, BIS(ACETATO-O) TETRAHYDROXYTRI-; Also known as LEAD SUBACETATE
U147	MALEIC ANHYDRIDE; Also known as 2,5-FURANDIONE
U148	MALEIC HYDRAZIDE; Also known as 3,6-PYRIDAZINEDIONE, 1,2-DIHYDRO-
U149	MALONONITRILE; Also known as PROPANEDINITRILE
U150	MELPHALAN; Also known as L-PHENYLALANINE, 4-[BIS(2-CHLOROETHYL)AMINO]-
U151	MERCYR
U152	METHACRYLONITRILE (I,T); Also known as 2-PROPENENITRILW, 2-METHYL- (I,T)
U153	METHANETHIOL (I,T); Also known as THIOMETHANOL (I,T)
U154	METHANOL (I); Also known as METHYL ALCOHOL (I)
U155	METHAPYRILENE; Also known 1,2-ETHANEDIAMINE, N,N- DIMETHYL-N'-W-PYRIDINYL-N'-(2- THIENYLMETHYL)-
U156	METHYL CHLOROCARBONATE (I,T); Also known CARBONCHLORIDIC ACID, METHYL ESTER (I,T)
U157	BENZ[<i>l</i>]ACEANTHRYLENE, 1,2-DIHYDRO-3-METHYL-; Also known as 3-METHYLCHOLANTHRENE
U158	BENZENAMINE, 4,4'-METHYLENEBIS[2-CHLORO-; Also known as 4,4'-METHYLENEBIS(2-CHLOROANILINE)
U159	METHYL ETHYL KETONE (MEK) (I,T); Also known as 2-BUTANONE (I,T)
U161	METHYL ISOBUTYL KETONE (I); Also known as 4-METHYL-2-PENTANONE (I) and PENTANOL, 4-METHYL-
U162	METHYL METHACRYLATE (I,T); Also known as 2-PROPENOIC ACID, 2-METHYL-, METHYL ESTER (I,T)

TABLE 2-1 -- HAZARDOUS WASTES RECEIVED AT THE PARKER FACILITY

EPA WASTE CODE	WASTE DESCRIPTION
U163	MNNG; Also known as GUANIDINE, N-METHYL-N'-NITRO-N- NITROSO-
U164	METHYLTHIOURACIL; Also known as 4(1H)-PYRIMIDINONE, 2,3-DIHYDRO-6-METHYL-2-THIOXO-
U165	NAPHTHALENE
U166	1,4-NAPHTHALENEDIONE; Also known as 1,4-NAPHTHOQUINONE
U167	1-NAPHTHALENAMINE; Also known as ALPHA-NAPHTHYLAMINE
U168	2-NAPHTHALENAMINE; Also known as BETA-NAPHTHYLAMINE
U169	NITROBENZENE (I,T); Also known as BENZENE, NITRO-
U170	P-NITROPHENOL; Also known as PHENOL, 4-NITRO
U171	2-NITROPROPANE (I,T); Also known as PROPANE, 2-NITRO (I,T)
U172	N-NITROSODI-N-BUTYLAMINE; Also known as 1-BUTANAMINE, N-BUTYL-N-NITROSO-
U173	N-NITROSODIETHANOLAMINE; Also known as ETHANOL, 2,2'-(NITROSOIMINO)BIS-
U174	N-NITROSODIETHYLAMINE; Also known as ETHANAMINE, N-ETHYL-N-NITROSO-
U176	N-NITROSO-N-ETHYLUREA; Also known as UREA, N-ETHYL-N-NITROSO-
U177	N-NITROSO-N-METHYLUREA; Also known as UREA, N-METHYL-N-NITROSO-
U178	N-NITROSO-N-METHYLURETHANE; Also known as CARBAMIC ACID, METHYLNITROSO-,ETHYL ESTER
U179	N-NITROSOPIPERIDINE; Also known as PIPERIDINE, 1-NITROSO-
U180	N-NITROSOPYRROLIDINE; Also known as PYRROLIDINE, 1-NITROSO-
U181	BENZENAMINE, 2-METHYL-5-NITRO-; Also known as 5-NITRO-O-TOLUIDINE
U182	PARALDEHYDE; Also known as 1,3,5-TRIOXANE, 2,4,6- TRIMETHYL-
U183	PENTACHLOROBENZENE; Also known as BENZENE, PENTACHLORO-
U184	PENTACHLOROETHANE; Also known as ETHANE, PENTACHLORO-
U185	PENTACHLORONITROBENZENE (PCNB); Also known as BENZENE, PENTACHLORONITRO-
U186	1,3-PENTADIENE (I); Also known as 1-METHYLBUTADIENE (I)
U187	ACETAMIDE, N-(4-ETHOXYPHENYL)-; Also known as PHENACETIN
U188	PHENOL
U190	PHTHALIC ANHYDRIDE; Also known as 1,3-ISOBENZOFURANDIONE
U191	2-PICOLINE; Also known as PYRIDINE, 2-METHYL-
U192	BENZAMIDE,3,5-DICHLORO-N-(1,1-DIMETHYL-2-PROPYNYL)-; Also known as PRONAMIDE
U193	1,3-PROPANE SULTONE; Also known as 1,2-OXATHIOLANE, 2,2-DIOXIDE
U194	1-PROPANAMINE (I,T); Also known as N-PROPYLAMINE (I,T)
U196	PYRIDINE
U197	P-BENZOQUINONE; Also known as 2,5-CYCLOHEXADIENE-1,4-DIONE

TABLE 2-1 -- HAZARDOUS WASTES RECEIVED AT THE PARKER FACILITY

EPA WASTE CODE	WASTE DESCRIPTION
U200	RESERPINE; Also known as YOHIMBAN-16-CARBOXYLIC ACID, 11,17-DIMETHOXY-18-[(3,4,5-TRIMETHOXYBENZOYL)OXY]-, METHYL ESTER, (3BETA, 16BETA, 17ALPHA, 18BETA, 20ALPHA)-
U201	RESORCINOL; Also known as 1,3-BENZENEDIOL
U202	SACCHARIN, & SALTS; Also known as 1,2-BENZISOTHIAZOL-3(2H)-ONE, 1,1-DIOXIDE, & SALTS
U203	SAFROLE; Also known as 1,3-BENZODIOXOLE, 5-(2- PROPENYL)-
U204	SELENIOUS ACID; Also known as SELENIUM DIOXIDE
U206	STREPTOZOTOCIN; Also known as GLUCOPYRANOSE, 2-DEOXY-2-(3-METHYL-3-NITROSOUREIDO)-, D-D-GLUCOSE, 2-DEOXY-2-[[[(METHYLNITROSOAMINO)-CARBONYL]AMINO]-
U207	1,2,4,5-TETRACHLORO BENZENE; Also known as BENZENE, 1,2,4,5-TETRACHLORO-
U208	1,1,1,2-TETRACHLOROETHANE; Also known as ETHANE, 1,1,1,2-TETRACHLORO-
U209	1,1,2,2-TETRACHLOROETHANE; Also known as ETHANE, 1,1,2,2-TETRACHLORO-
U210	TETRACHLOROETHYLENE; Also known as ETHENE, TETRACHLORO-
U211	CARBON TETRACHLORIDE; Also known as METHANE, TETRACHLORO-
U213	TETRAHYDROFURAN (I); Also known as FURAN, TETRAHYDRO-(I)
U214	ACETIC ACID, THALLIUM(1+) SALT; Also known as THALLIUM(I) ACETATE
U215	THALLIUM(I) CARBONATE; Also known as CARBONIC ACID, DITHALLIUM(1+) SALT
U216	THALLIUM(I) CHLORIDE; Also known as THALLIUM CHLORIDE TLCL
U217	THALLIUM(I) NITRATE; Also known as NITRIC ACID, THALLIUM(1+) SALT
U218	THIOACETAMIDE; Also known as ETHANETHIOAMIDE
U219	THIOUREA
U220	TOLUENE; Also known as BENZENE, METHYL-
U221	TOLUENEDIAMINE; Also known as BENZENEDIAMINE, AR-METHYL-
U222	BENZENAMINE, 2-METHYL-, Also known as HYDROCHLORIDE O-TOLUIDINE HYDROCHLORIDE
U225	BROMOFORM; Also known as METHANE, TRIBROMO-
U226	ETHANE, 1,1,1-TRICHLORO-; Also known as METHYL CHLOROFORM
U227	1,1,2-TRICHLOROETHANE; Also known as ETHANE, 1,1,2-TRICHLORO-
U228	TRICHLOROETHYLENE; Also known as ETHENE, TRICHLORO-
U235	TRIS(2,3-DIBROMOPROPYL) PHOSPHATE; Also known as 1-PROPANOL, 2,3-DIBROMO-, PHOSPHATE (3:1)
U236	TRYPAN BLUE; Also known as 2,7-NAPHTHALENEDISULFONIC ACID, 3,3'-[(3,3'-DIMETHYL[1,1'-BIPHENYL]-4,4'- DIYL)BIS(AZO)BIS[5-AMINO-4-HYDROXY]-, TETRASODIUM SALT
U237	URACIL MUSTARD; Also known as 2,4-(1H,3H)-PYRIMIDINEDIONE, 5-[BIS(2-CHLOROETHYL)AMINO]-

TABLE 2-1 -- HAZARDOUS WASTES RECEIVED AT THE PARKER FACILITY

EPA WASTE CODE	WASTE DESCRIPTION
U238	CARBAMIC ACID, ETHYL ESTER; Also known as ETHYL CARBAMATE (URETHANE)
U239	XYLENE (I); Also known as BENZENE, DIMETHYL- (I,T)
U240	ACETIC ACID, 92,4-DICHLOROPHENOXY)-, SALTS & ESTERS; Also known as 2,4-D, SALTS & ESTERS
U243	HEXACHLOROPROPENE; Also known as 1-PROPENE, 1,1,2,3,3,3- HEXACHLORO-
U244	THIOPEROXYDICARBONIC DIAMIDE [(H ₂ N)C(S)] ₂ S ₂ , TETRAMETHYL-; Also known as THIRAM
U246	CYANOGEN BROMIDE (CN)Br
U247	BENZENE, 1,1'(2,2,2-TRICHLOROETHYLIDENE)BIS[4-METHOXY-; Also known as METHOXYCHLOR
U248	WARFARIN, & SALTS, WHEN PRESENT AT CONCENTRATIONS OF 0.3% OR LESS; Also known as 2H-1-BENZOPYRAN-2-ONE, 4- HYDROXY-3-(3-OXO-1-PHENYL-BUTYL)-, & SALTS, WHEN PRESENT AT CONCENTRATIONS OF 0.3% OR LESS
U249	ZINC PHOSPHIDE Zn ₃ P ₂ WHEN PRESENT AT CONCENTRATIONS OF 10% OR LESS
U328	BENZENAMINE, 2-METHYL-; Also known as o-TOLUIDINE
U353	BENZENAMINE, 4-METHYL-; Also known as p-TOLUIDINE
U359	ETHANOL, 2-ETHOXY-; Also known as ETHYLENE GLYCOL MONOETHYL ETHER

Table 2-2

Spent Activated Carbon Organic Constituent Data Summary				
Constituent	CAS NO.	Organics (lb constituent per lb spent activated carbon)		
		Minimum	Maximum	Average
1-Butanol	71-36-3	8.67E-04	8.67E-04	8.67E-04
1-Hexane	110-54-3	3.86E-04	8.45E-02	4.24E-02
1,1 Dichloroethane	75-34-3	9.00E-09	3.20E-02	9.71E-04
1,1 Dichloroethene	75-35-4	2.50E-10	2.94E-01	2.51E-03
1,1,1 Trichloroethane	71-55-6	2.50E-09	3.43E-01	1.31E-02
1,1,2 Trichloroethane	79-00-5	5.00E-07	1.41E-02	3.28E-03
1,1,2,2 Tetrachloroethane	79-34-5	1.45E-05	3.31E-04	2.29E-04
1,2 Dibromoethane	106-93-4	2.50E-08	1.98E-02	4.57E-03
1,2 Dichlorobenzene	95-50-1	2.05E-05	4.60E-03	9.99E-04
1,2 Dichloroethane	107-06-2	0.00E+00	1.39E-01	7.18E-03
1,2 Dichloroethene	540-59-0	2.50E-08	7.32E-03	2.13E-03
1,2 Dichloropropane	78-87-5	3.00E-09	5.30E-02	6.06E-03
1,2,3 Trichloropropane	96-18-4	3.72E-06	3.72E-06	3.72E-06
1,2,4 Trimethylbenzene	95-63-6	1.10E-07	4.80E-04	3.84E-04
1,2-Dichloroethene (cis)	156-59-2	1.00E-09	2.63E-03	1.39E-03
1,2-Dichloroethene (trans)	156-60-5	7.32E-05	5.44E-04	3.65E-04
1,3 Dichlorobenzene	541-73-1	7.40E-05	5.48E-04	1.70E-04
1,4 Dichlorobenzene	106-46-7	2.50E-08	3.44E-03	5.20E-04
2,3,4,6 Tetrachlorophenol	58-90-2	1.82E-05	1.82E-05	1.82E-05
2-Butanol	78-92-2	5.90E-04	5.90E-04	5.90E-04
2-Butoxyethanol	111-76-2	2.73E-03	2.73E-03	2.73E-03
2-ethyl-1-Methylbenzene	611-14-3	9.40E-05	9.40E-05	9.40E-05
2-methoxy-1-Propanol		6.24E-03	6.24E-03	6.24E-03
2-Methylnaphthalene	91-57-6	1.63E-05	1.34E-03	4.61E-04
2-Methylphenol (o-Cresol)	95-48-7	2.14E-05	2.14E-05	2.14E-05
3-/4-Methylphenol (m&p Cresol)	108-39-4 & 106-44-5	3.40E-05	3.40E-05	3.40E-05
4-ethyl-1-Methylbenzene		8.10E-05	8.10E-05	8.10E-05
Acenaphthalene	208-96-8	3.36E-05	6.26E-04	3.30E-04
Acenaphthene	83-32-9	2.81E-06	2.41E-05	1.09E-05
Acenaphthylene		1.18E-06	2.66E-06	1.92E-06
Acetone	67-64-1	4.51E-03	8.49E-03	6.50E-03
Acrylic Acid	79-10-7	2.50E-05	2.50E-05	2.50E-05
Acrylonitrile	107-13-1	9.30E-06	9.30E-06	9.30E-06
Aldrin	309-00-2	6.60E-07	6.60E-07	6.60E-07
Aniline	62-53-3	2.51E-05	4.26E-04	1.47E-04
Benzene	71-43-2	2.50E-10	9.25E-02	1.44E-03
Benzo(a)Anthracene	56-55-3	5.60E-07	2.10E-06	1.33E-06
Benzo(b)Fluoranthene	205-99-2	2.30E-07	4.00E-07	3.20E-07
Bromodichloromethane	75-27-46	3.00E-05	6.18E-04	4.06E-04
Butane	106-97-8	9.69E-06	9.69E-06	9.69E-06
Butyl Acetate	123-86-4	1.36E-02	1.36E-02	1.36E-02
Carbon Tetrachloride	56-23-5	3.00E-08	1.36E-02	5.39E-04
Chlorobenzene	108-90-7	2.50E-08	2.75E-03	4.76E-04
Chloroethane	75-00-3	3.89E-03	3.89E-03	3.89E-03

Table 2-2

Spent Activated Carbon Organic Constituent Data Summary				
Constituent	CAS NO.	Organics (lb constituent per lb spent activated carbon)		
		Minimum	Maximum	Average
Chloroform	67-66-3	1.40E-08	2.08E-02	1.05E-02
Chloromethane	74-87-3	2.06E-04	2.06E-04	2.06E-04
Chrysene	218-01-9	6.40E-07	6.40E-07	6.40E-07
Cresol	1319-77-3	5.10E-05	1.74E-04	1.13E-04
Cumene	98-82-8	5.78E-06	1.65E-03	4.37E-04
Dibenzofuran	132-64-9	7.66E-06	2.61E-05	1.69E-05
Dicyclopentadiene	77-73-6	6.06E-04	6.49E-02	1.68E-02
Dioxane	123-91-1	1.16E-04	9.20E-04	5.18E-04
Ethanol	64-17-5	3.56E-04	3.56E-04	3.56E-04
Ethyl Acetate	141-78-6	5.87E-03	5.87E-03	5.87E-03
Ethylbenzene	100-41-4	5.00E-10	2.30E-02	1.14E-03
Ethylene Glycol	107-21-1	2.94E-01	2.94E-01	2.94E-01
Fluoranthene	206-44-0	3.11E-06	2.90E-05	1.61E-05
Freon 113	76-13-1	1.10E-09	1.10E-09	1.10E-09
Isobutane	75-28-5	1.42E-02	1.42E-02	1.42E-02
Isopar C		1.27E-03	5.48E-02	2.80E-02
Isopropyl Alcohol	67-63-0	7.00E-03	7.00E-03	7.00E-03
Lindane	58-89-9	1.54E-09	6.70E-06	1.28E-06
m&p-Xylenes	108-38-3 &106-42-3	7.20E-08	2.89E-03	5.90E-04
Methanol	67-56-1	1.36E-01	1.36E-01	1.36E-01
Methoxychlor	72-43-5	2.80E-06	2.80E-06	2.80E-06
Methyl ethyl ketone	78-93-3	1.20E-08	4.10E-03	1.40E-03
Methyl Isobutyl ketone	108-10-1	5.00E-06	4.24E-02	2.94E-03
Methyl methacrylate	80-62-6	2.50E-08	2.50E-08	2.50E-08
methyl tert-butyl ether	1634-04-4	1.22E-07	4.66E-02	5.86E-03
Methylene chloride	75-09-2	1.90E-08	1.30E-01	1.63E-03
Methylnaphthalene	28804-88-8	3.54E-06	5.03E-06	4.29E-06
Naphthalene	91-20-3	6.00E-09	4.93E-03	4.31E-04
n-Hexane	110-54-3	5.51E-04	8.25E-03	4.40E-03
Nitrobenzene	98-95-3	6.99E-06	3.14E-02	4.50E-03
o-Xylene	95-47-6	2.50E-09	9.00E-05	1.22E-05
Pentachlorophenol	87-86-5	1.00E-06	3.97E-03	7.36E-04
Phenanthrene	85-01-8	3.20E-07	2.95E-05	1.08E-05
Phenol	108-95-2	2.00E-07	4.03E-03	1.27E-03
Polychlorinated Biphenyls	1336-36-3	8.00E-07	3.50E-06	2.15E-06
Propylbenzene	103-65-1	9.00E-05	9.00E-05	9.00E-05
Propylene glycol monomethyl ether acetate	107-98-2	1.45E-02	1.45E-02	1.45E-02
Propylene oxide	75-56-9	4.30E-09	4.00E-03	1.00E-03
Styrene	100-42-5	2.50E-08	3.97E-02	3.57E-03
Tetrachloroethane	630-20-6 & 79-34-5	2.96E-03	2.96E-03	2.96E-03
Tetrachloroethylene	127-18-4	0.00E+00	1.59E-01	1.84E-02
Tetrahydrofuran	109-99-9	4.16E-04	4.16E-04	4.16E-04

Table 2-2

Spent Activated Carbon Organic Constituent Data Summary				
Constituent	CAS NO.	Organics (lb constituent per lb spent activated carbon)		
		Minimum	Maximum	Average
Toluene	108-88-3	1.60E-09	1.30E-01	8.68E-03
Trichloroethylene	79-01-6	2.50E-09	2.17E-01	2.24E-03
Trichlorofluoromethane	75-69-4	1.00E-07	4.00E-02	1.42E-03
Triethylamine	121-44-8	9.54E-03	9.54E-03	9.54E-03
Tris(hydroxymethyl) Aminomethane		1.77E-02	1.77E-02	1.77E-02
Vinyl Chloride	75-01-4	2.30E-08	2.40E-05	2.58E-06
Xylene	1330-20-7	8.00E-10	1.59E-01	3.41E-03

All data reported on a dry carbon basis.

Note: The information presented in this table is considered typical but should not be considered limiting.

Table 2-3
Spent Activated Carbon Characterization Summary

Stream Type: Solid

Stream Name: Spent Activated Carbon

Feed Method: Dewatering screw, conveyor belt and rotary airlock

Constituent/Property	Units	Value	
		Typical	Range
Organic Constituents (a)			
Total organics	wt%	3.1	2 - 4
Inorganic Constituents			
Water	wt%	43.5	30 - 50
RCRA Metals (a)			
Antimony	mg/kg	<10	<10
Arsenic	mg/kg	2.8	1.2 - 19
Barium	mg/kg	38.3	1 - 110
Beryllium	mg/kg	0.5	<0.1 - 0.7
Cadmium	mg/kg	0.7	<0.5 - 6.9
Chromium	mg/kg	11	3.1 - 240
Chromium (VI)	mg/kg	<0.9	<1
Lead	mg/kg	2.7	<2 - 25
Mercury	mg/kg	0.1	0 - 0.5
Nickel	mg/kg	21.3	7.5 - 140
Selenium	mg/kg	<2	<1 - 3.9
Silver	mg/kg	1	<0.5 - 1.6
Thallium	mg/kg	10.7	<5 - 29
Other Metals (a)			
Cobalt	mg/kg	4.8	2.1 - 19
Copper	mg/kg	31.4	12 - 60
Manganese	mg/kg	223	54 - 590
Vanadium	mg/kg	6.2	3.7 - 7.9
Zinc	mg/kg	35.4	22 - 44
Elemental Composition (b)			
Carbon (from spent carbon)	wt%	94.5	70 - 99
Carbon (from organic adsorbed on carbon)	wt%	2.9	1.6 - 25
Hydrogen	wt%	0.4	0.2 - 8
Oxygen	wt%	0.5	0.3 - 5
Nitrogen	wt%	0.1	0.06 - 0.5
Sulfur	wt%	0	<0.1
Phosphorous	wt%	0	<0.1
Chlorine/chloride	wt%	1.5	0 - 5
Bromine/bromide	wt%	0	<0.1
Fluorine/fluoride	wt%	0	<0.1
Iodine/iodide	wt%	0	<0.1

(a) - As fed basis (wet)

(b) - Dry basis (as received)

Note: The information presented in this table is considered typical but should not be considered limiting.

3.0 THE CONTINGENCY PLAN

3.1 COPIES

An updated copy of the Contingency Plan will be maintained at the facility administration building file room at all times. In addition, a copy of the plan and copies of all revisions to the plan will be submitted to the following entities that may be called upon to respond to an emergency situation: The Colorado River Indian Tribes Fire Department and Police Department, the Town of Parker Fire Department and Police Department, and the La Paz Regional Hospital. A copy of the contingency plan will also be submitted with the Part B application.

3.2 AMENDMENTS

The Contingency Plan will be reviewed and immediately amended, if necessary, whenever one of the following occurs.

- The facility RCRA Part B permit is revised;
- The plan fails in an emergency;
- The facility changes in its design, construction, operation, maintenance or other circumstances in a way that materially increases the potential for fires, explosions or releases of hazardous waste or hazardous waste constituents or changes the response necessary in an emergency;
- The list of Emergency Coordinators changes; or
- The list of emergency equipment changes.

3.3 TRAINING

Each new employee will be familiarized with the Contingency Plan, including evacuation procedures and emergency response procedures, during the employee's initial orientation. The Contingency Plan training will be documented in the employee's permanent record.

All employees will receive refresher training on the Contingency Plan as necessary. Training sessions will be scheduled after any substantive amendments are made to the plan for those employees who are affected by the amendments.

4.0 RESPONSIBLE AGENCIES

4.1 OFF-SITE RESPONSE AGENCIES

EWT has agreements with several agencies to respond to emergency situations that may require outside assistance. The agencies have received a copy of the Contingency Plan and were familiarized with the layout of the facility including access roads, places where personnel would normally be working, the properties of hazardous wastes handled at the facility and possible evacuation routes. A copy of the acknowledgments with each agency is located in Appendix A.

Below is a list of the response agencies and their responsibilities during an emergency situation.

Colorado River Indian Tribes (C.R.I.T.) Fire Department	928-662-4388	<u>Primary Responding Agency</u> Will set up an Incident Command System (ICS) and the senior fire department official would assume the role of Incident Commander. Has authority over all other responding agencies. Responsible for leading all fire fighting efforts, clean-up efforts and evacuation procedures.
C.R.I.T. Police Department	928-669-9277	Responsible to C.R.I.T. Fire Department. Will aid in clean-up efforts and evacuation procedures as required.
Parker Fire Department	928-669-2206	Responsible to C.R.I.T. Fire Department. Will aid in fire fighting efforts, clean-up efforts and evacuation procedures as required.
Parker Police Department	928-669-2264	Responsible to C.R.I.T. Fire Department. Will aid in clean-up efforts and evacuation procedures as required.

4.2 OFF-SITE MEDICAL ASSISTANCE

The medical facility that will handle any casualties occurring during an emergency situation, including paramedic service and hospital care, is:

La Paz Regional Hospital 928-669-9201

The hospital has been familiarized with the properties of hazardous wastes handled at the facility and the types of injuries that could result from fires, explosions or releases at the facility. A copy of the acknowledgment with La Paz Regional Hospital is located in Appendix A.

4.3 OTHER EMERGENCY CONTACTS

The following is a list of other authorities that may be called upon to provide assistance in an emergency situation. All of the agencies would be responsible to the C.R.I.T. Fire Department.

Arizona Highway Patrol	911
California Highway Patrol	911
Southwest Gas Company	800-528-4277
Bureau of Indian Affairs Colorado River Agency (Power Company)	928-669-7123
C.R.I.T.	928-669-9211
Environmental Compliance Officer	

The following agencies may also be notified in the event of emergency.

U.S. Environmental Protection Agency Region IX, 24-Hour Environmental Emergencies, (800) 300-2193	
C.R.I.T. Environmental Coordinator	928-669-9211 OR 928-662-4336
National Response Center	800-424-8802

5.0 EMERGENCY COORDINATOR

5.1 EMERGENCY COORDINATOR AND ALTERNATE

The site has an Emergency Coordinator who is responsible for carrying out the Contingency Plan in the event of an emergency. He/She has the authority to commit any resources needed to carry out the Contingency Plan in an emergency situation. The site also has Alternate Emergency Coordinator(s) who have full authority to perform the functions of the Emergency Coordinator should the Emergency Coordinator be unavailable. In the remaining text, "Emergency Coordinator" will refer to either the Emergency Coordinator or his/her Alternate(s).

The Emergency Coordinator will be on site or on call 24 hours a day. He will normally be at the facility during daytime business hours. If not on site, he will be contacted immediately in the event of an emergency. Until the Emergency Coordinator reaches the site, the Plant Operator will take the role of Acting Emergency Coordinator. If necessary, the Emergency Coordinator will grant the Plant Operator authority to commit the resources needed to carry out the Contingency Plan in his absence.

The Emergency Coordinator, Alternate(s), and Plant Operators will be thoroughly familiar with all aspects of the Contingency Plan, all operations and activities at the facility, the location and characteristics of wastes handled and the location of all records within the facility.

The Emergency Coordinator is:

Name:	Monte McCue – Director of Operations
Address:	2523 Mutahar Street; Parker, Arizona
Telephone:	(928) 669-5758
Home Address:	2565 Saratoga Avenue, Lake Havasu City AZ. 86406
Home Phone:	(928)680-7445

The Alternate Emergency Coordinator(s) is:

Name:	Roy Provins – EHS Manager
Address:	2523 Mutahar Street; Parker, Arizona
Telephone:	(928) 669-5758
Home Address:	112 South Acoma, Lake Havasu, AZ 86403
Home Phone:	(928) 680-7450
Cell phone:	(724) 799-6667

5.2 EMERGENCY COORDINATOR RESPONSIBILITIES

The Emergency Coordinator is responsible for coordinating the following emergency response measures at the facility in accordance with the requirements of 40 CFR 264.56. If

necessary, the Plant Operator will perform Emergency Coordinator functions until the arrival on-site of the Emergency Coordinator. An emergency situation is defined as a fire or explosion, or a significant uncontrolled release of materials that has the potential to threaten human health and the environment.

5.2.1 NOTIFICATION

Whenever there is an imminent or actual emergency situation, the Emergency Coordinator will, where applicable, immediately notify all personnel at the facility via the public address system, alarm system or other direct means, if the public address system is not operational.

When hazardous waste is being handled, all employees involved in these activities have immediate access to an internal alarm, or emergency device, either directly or through visual or voice contact with another employee. Communication devices include portable radios, and the site telephone/paging systems located throughout the facility. Employees typically work in pairs when handling hazardous waste.

The Emergency Coordinator will also notify appropriate agencies with designated response roles if their assistance is needed. Section 4.0 contains a list of local agencies and their designated responsibilities.

5.2.2 IDENTIFICATION OF HAZARDOUS MATERIALS

Whenever there is an emergency situation, the Emergency Coordinator will identify, if possible, the character, exact source, amount and a real extent of any spilled or released materials. This may be done by observation, review of facility records, review of manifests or material safety data sheets and, if necessary, by chemical analysis.

5.2.3 ASSESSMENT OF HEALTH EFFECTS

Concurrently, the Emergency Coordinator will assess the possible hazards to human health or the environment that may result from the emergency situation. The assessment will consider both the direct and indirect effects of the release, fire or explosion (e.g., the effects of any toxic, irritating or asphyxiating gases that may be generated or the effects of any hazardous surface water run-off from water or chemical agents used to control fire and heat-induced explosions).

5.2.4 OFF-SITE HEALTH EFFECTS

Should the Emergency Coordinator determine that the emergency situation could threaten human health or the environment outside of the facility boundaries, the Emergency Coordinator will report the findings of his assessments as follows, in accordance with the requirements of 40 CFR 264.56(d):

- 1) If evacuation of local areas may be advisable, he will immediately notify the Colorado River Indian Tribes Fire Department and the Tribal Environmental Compliance Officer. The Parker Fire Department will be called in by the C.R.I.T Fire Department (see Section 4.0 for a list of off-site emergency response agencies and their responsibilities; see Section 8.0 for evacuation procedures).

- 2) He will immediately notify the National Response Center at 800-424-8802 and provide the following information:
- Name and telephone number of reporter
 - Name and address of the facility
 - Time and type of the incident (e.g., fire, explosion or release)
 - Name and quantity of material(s) involved, to the extent known
 - Extent of injuries, if any
 - Possible hazards to human health or the environment outside the facility.

5.2.5 PREVENTION OF SPREAD OR RECURRENCE OF EMERGENCY

It is the responsibility of the Emergency Coordinator during an emergency to take all reasonable measures to ensure that fires, explosions and releases do not occur, recur, or spread to other hazardous wastes at the facility. These measures include, where applicable, stopping operations, collecting and containing released waste and removing or isolating containers.

The Emergency Coordinator will also maintain surveillance of other areas of the facility to make certain they are not affected. Containers may be removed or isolated from the area of the release to prevent contact with released materials or to prevent ignition in the event of a fire. If the facility stops operation in response to an emergency situation, the Emergency Coordinator will monitor the affected areas for imminent hazards (e.g. pressure buildup, ruptured valves or pipes, leaks or gas generation) where appropriate.

5.2.6 CONTAMINATED MATERIALS

After an emergency, the Emergency Coordinator will take all reasonable measures to provide for treating, storing or disposing of recovered waste, contaminated soil or surface water or any other material that results from an emergency situation at the facility. Hazardous wastes will be managed in full compliance with applicable requirements. For example, contaminated materials may be placed in sealed containers and stored within a containment area while the materials are characterized and arrangements are made for proper disposal.

5.2.7 INCOMPATIBLE WASTE AND EMERGENCY EQUIPMENT

In the affected areas of the facility, no hazardous waste that may be incompatible with the contaminated materials will be treated or accepted for storage on site, or disposed of until cleanup procedures are completed. Materials appropriate for use in responding to an emergency include “oil-dry” type sorbents, absorbent boom and barrier materials, activated carbon, sand, water, etc. There are few, if any, reactivity or incompatibility issues associated with the materials treated at the facility. Specific exclusions of reactive wastes are contained in other portions of the permit documents.

5.2.8 COMPLETION OF CLEANUP

In the event the facility is required to stop operations in response to an emergency situation, the emergency equipment used to respond to the emergency situation will be cleaned and/or made fit for its intended use, or replaced, before operations are resumed

(see Section 6.0 for a list of emergency equipment and their uses). The Plant Manager will be responsible for notifying EPA and any appropriate local authorities so that the facility has complied with 40 CFR 264.56 (h) and (i) before operations are resumed in the affected areas of the facility. The procedures to be followed before resuming operations are set forth in Section 9.2.

5.2.9 RECORD OF EMERGENCIES

The Emergency Coordinator, or appointed alternate, will record the time, date, and details of any emergency incident in the operating record in accordance with 40 CFR 264.56(i). The Plant Manager is responsible for submitting any required reports (see Section 9.0).

6.0 EMERGENCY EQUIPMENT

A list of all emergency equipment at the Evoqua Water Technologies Parker facility is located in Table 6-1. Appendix D shows the location of all emergency equipment within the facility. All facility communications and alarm systems, fire protection equipment, spill control equipment and decontamination equipment will be tested and maintained as necessary to assure proper operation in time of emergency.

A description of the emergency equipment is provided below.

6.1 FIRE EXTINGUISHERS

EWT has a minimum of nine 10-pound (or greater) ABC dry chemical fire extinguishers located throughout the facility.

6.2 FIRE SPRINKLERS

The main warehouse is equipped with a fire sprinkler system that is automatically activated in the event of a fire. Water pressure checks are included in the monthly inspections and the entire system is inspected annually by an outside firm.

6.3 SPILL CONTROL EQUIPMENT

Absorbent materials and spill cleanup equipment are available in a dedicated storage area at the facility. The spill control kits include the following, at a minimum:

- Inert adsorbents
- Absorbent pads and/or booms
- Shovels
- Neutralizing agents (soda ash and/or lime).

At least one forklift is available for moving palletized absorbent materials and removing containerized spill cleanup residues.

6.4 COMMUNICATIONS EQUIPMENT

It is expected that the facility will be occupied at all times. Telephone service, with a paging system, is available at several locations in the plant. The Emergency Coordinator will remain available (on call) when they are not present at the facility.

When hazardous waste is being handled, all employees involved the these activities have immediate access to an internal alarm, or emergency device, either directly or through visual or voice contact with another employee. Communication devices include portable radios, and the site telephone/paging systems located throughout the facility. Employees typically work in pairs when handling hazardous waste.

6.5 ALARM SYSTEMS

There is a local alarm system with activation points in the storage and warehouse building. The alarm system consists of a control panel located on the west, outside wall of the control room and pull switches separated in four zones. If the alarm sounds, the control panel will display the "zone" (1,2,3 or 4) in which the alarm was pulled. The alarm system provides a warning system at the facility; it is not directly connected to the fire department.

6.6 DECONTAMINATION EQUIPMENT

Two emergency shower and eyewash stations are located in the reactivation area. Detergents are also provided for decontamination of facilities and equipment as necessary.

Detergent and water, or water alone, are appropriate decontamination agents for all equipment which may be used in responding to a spill or emergency. Equipment should be thoroughly washed and rinsed, and all decontamination solution will be collected and managed in the facility wastewater treatment system, or sent off-site for disposal.

6.7 OTHER EMERGENCY EQUIPMENT

All waste handling employees are provided with a wide range of personal protective equipment that includes the following.

- Respirators with particulate and organic vapor cartridges
- Self-contained breathing apparatus (minimum of two 30-minute air supply). These units may be used in the event of a major unplanned release of materials such as the rupture of a spent carbon storage tank or a slurry truck. The unit would be used by the employee evaluating the release area for the unlikely presence of toxic fumes.
- Protective clothing (hard hats, gloves, safety glasses, boots)

The facility also has at least one first aid kit to handle injuries that may occur in emergency and non-emergency situations.

TABLE 6-1. EMERGENCY EQUIPMENT

Equipment Type	Quantity (Minimum)	Brand/ Model (or equivalent)	Capabilities/ Specifications
Emergency Alarm w/Four Actuators	1	Fire Lite/ Miniscan 5210 UD	Control panel indicates the zone in which the emergency actuator alarm has been pulled
Emergency Showers/ Eyewashes	2	Encon Model 3581-1900	For flushing eyes and skin
Fire Alarm System - Manual and Automatic	1	Fire Lite	Manual - pull switches; Automatic – when sprinkler system activates
Fire Extinguishers		Amerex	10 pound (or greater) ABC; dry chemical
First Aid Kit	1		General
Protective Clothing - Hard Hats, Gloves, Safety Glasses	Assigned to Each Employee plus Spare Units		
Respirators	Assigned to Each Waste Handling Employee plus Spare Units	Scott/65	With particulate and organic filters
Self-Contained Breathing Apparatus	2	Scott Air Pak 22	30-minute air supply
Spill Control Equipment	1	Spilfyter	95 gallon
Sprinkler Systems	2	Grinnel	314 gpm @ 22.1 psi
Telephones w/Paging System	2	AT&T Partner II	Page throughout plant

7.0 EMERGENCY RESPONSE PROCEDURES

No employee will take an active role responding to an emergency unless they have completed the initial training program for any employee who has the potential to handle hazardous waste as described in the EWT Personnel Training Plan. Any employee who has not completed the program will remain in a clear area as instructed by the Emergency Coordinator until the emergency has passed.

No personnel will respond to an emergency without donning appropriate protective clothing and/or a breathing apparatus, depending on the type of emergency.

The general emergency response procedures for explosions, fires and releases of hazardous waste or hazardous waste constituents are described below. The procedures are summarized in table format in Appendix B.

7.1 EXPLOSIONS AND/OR FIRES

In the event of an explosion or fire, the following actions will be taken, as appropriate.

- 1) Any person discovering a fire/explosion will immediately sound the alarm and contact the Plant Operator. They will also determine the nature and source of the fire and correct it to the extent that they can do so without significant risk to him/herself or others.
- 2) The Plant Operator will contact the Emergency Coordinator and will assist in contacting appropriate emergency response agencies (see Section F.3) as determined necessary by the Emergency Coordinator. If Evoqua Water Technologies capabilities are not adequate to extinguish the fire, the C.R.I.T. Fire Department will be notified immediately by dialing (928)662-4388.
- 3) The Emergency Coordinator shall:
 - Remove all nonessential personnel and equipment from the vicinity of the fire
 - Access available equipment, supplies and trained personnel for use in responding to the incident
 - Utilize trained personnel and/or allow fire department personnel to control and/or extinguish any fire and reduce the chance of further fires or explosion
 - Determine the cause of the explosion or fire and correct it
 - Close down all or part of the facility, if necessary.

- 4) As long as there is no significant risk to themselves or others, trained employees shall:
 - Shut off the fuel source to the fire, if possible
 - Attempt to control the fire with dry chemical fire extinguishers (for Class A, B and C fires) and/or water (for Class A fires)
 - Shut off any operating equipment, treatment processes, etc. in the vicinity of the fire
 - Shut off electrical power in the area affected by the fire
 - If flammable materials are involved, remove all sources of ignition in the vicinity of the fire.

7.2 RELEASES OF HAZARDOUS WASTE

The response procedures described below are for the release of hazardous waste or hazardous waste constituents to the air or solid/liquid releases to the ground. Special considerations are made based on the location (inside or outside of a containment area) and amount of the release.

7.2.1 RELEASE OF TOXIC EMISSIONS

If there is any indication of the possible presence of toxic fumes that constitute an emergency, the following actions will be taken as appropriate.

- 1) Any person discovering the fumes or possible presence of fumes will determine the nature, source and location of the fumes and, if appropriate, immediately sound the nearest facility alarm horn or announce the emergency via the plant intercom system and notify the Plant Operator. The person will then correct the problem, if possible without significant risks to themselves or others.
- 2) The Plant Operator will immediately contact the Emergency Coordinator, or if not available, one of the alternate Emergency Coordinators.
- 3) If an emergency situation is verified, operations will cease and all personnel will be removed to a well-ventilated location until the situation is corrected. All trained personnel that may assist in correcting the source of the fumes will wear proper respiratory equipment and follow confined space entry procedures.
- 4) The Emergency Coordinator shall:

- Immediately assess the possible hazards and implement additional emergency procedures if applicable
 - Contact the C.R.I.T. Fire Department and the National Response Center if the release could threaten human health or the environment outside of the facility
 - Notify the C.R.I.T. Environmental Compliance Officer who may make other State and local notifications at his discretion
 - Remove all nonessential personnel and equipment from the vicinity of the fire
 - Access available equipment, supplies and trained personnel for use in responding to the incident
 - Utilize trained personnel to control and/or reduce the chance of further release
 - Determine the cause of the release and correct it
 - Close down all or part of the facility, if necessary.
- 5) As long as there is no significant risk to themselves or others, and if the action is warranted by the emergency situation, trained employees shall:
- Discontinue the waste transfer operation by closing appropriate valves and de-energizing transfer equipment
 - Secure the lids on any open waste containers
 - Remove all sources of ignition from the area.

7.2.2 RELEASE OF SOLIDS

7.2.2.1 WITHIN CONTAINMENT AREA

The following steps are to be taken by trained personnel in the event of a release of solid material that constitutes an emergency situation within the containment area.

- 1) Locate the source and stop the release.
- 2) Notify the Plant Operator of the emergency situation, who will in turn notify the Emergency Coordinator.

- 3) Clean up the released material and place in a container. Take filled container to the spent carbon storage area and label properly.
- 4) Decontaminate the area of the spill.
- 5) Clean any tools used during clean up (with detergents if necessary). The cleaning solution will be containerized or rinsed to the sump.
- 6) The Emergency Coordinator will inspect the area to identify any further clean-up requirements and provide instructions related to the disposition of the released materials placed in containers.

7.2.2.2 OUTSIDE CONTAINMENT AREA

The following steps are to be taken by trained personnel in the event of a release of solid material that constitutes an emergency situation outside the containment area.

- 1) Locate the source and stop the release.
- 2) Notify the Plant Operator of the emergency situation, who will in turn notify the Emergency Coordinator.
- 3) The Emergency Coordinator will immediately contact the C.R.I.T. Fire Department and the National Response Center if the release could threaten human health or the environment outside the facility.
- 4) Clean up the released material, and any other materials in the release area that may have come in contact with the released material, and place in a container. Take filled container to the spent carbon storage area and label properly.
- 5) Clean any tools used during clean up (with detergents if necessary) inside the containment area. The cleaning solution will be containerized or rinsed to the sump.
- 6) The Emergency Coordinator will inspect the area to identify any further clean-up requirements and provide instructions related to the disposition of the released materials placed in containers.

7.2.3 RELEASE OF LIQUIDS

7.2.3.1 WITHIN CONTAINMENT AREA

The following steps are to be taken in the event of a liquid release that constitutes an emergency situation within the containment area.

- 1) Locate the source and stop the release, if possible.

- 2) Notify the Plant Operator of the emergency situation, who will in turn notify the Emergency Coordinator.
- 3) Allow free liquids to flow to the nearest sump. After as much free liquid as possible has been drained to the sump, place any remaining solid material in a container. Take filled container to the spent carbon storage area and label properly.
- 4) Decontaminate the area of the spill, directing water to the nearest sump.
- 5) Clean any tools used during clean up (with detergents if necessary). The cleaning solution will be containerized or rinsed to the sump.
- 6) The Emergency Coordinator will inspect the area to identify any further clean-up requirements and provide instructions related to the disposition of the released materials placed in containers.

7.2.3.2 OUTSIDE CONTAINMENT AREA

The following steps are to be taken in the event of a liquid release outside the containment area that constitutes an emergency situation.

- 1) Locate the source and stop the release, if possible.
- 2) Notify the Plant Operator of the emergency situation, who will in turn notify the Emergency Coordinator.
- 3) The Emergency Coordinator will coordinate the following actions:
 - The contacting of any appropriate emergency response agencies
 - The removal of all nonessential personnel and equipment from the vicinity of release
 - The provision of equipment and supplies appropriate for use in responding to the incident
 - The utilization of trained personnel and equipment and/or fire department personnel to contain the release in the smallest possible area. Adsorbents, earth and/or containment boom material may be used as appropriate
 - The immediate notification of the C.R.I.T. Fire Department and the National Response Center if a release could threaten human health or the environment outside the facility. Also, the C.R.I.T. Environmental Coordinator must be notified if a spill contacts or threatens surface waters off site.

- The initiation of shutdown of all or part of the facility, if warranted
 - The collection of released material, any soil that came into contact with the released material and any adsorbents in containers. The containers will be placed in the spent carbon storage area and labeled properly.
 - The inspection of the release area to ensure it is properly cleaned
 - The determination of final disposition of any materials placed in containers during the clean-up.
- 4) Clean any tools used during clean up (with detergents if necessary) inside the containment area. The cleaning solution will be containerized or rinsed to the sump.

7.3 PERSONAL INJURY

Should a person be injured for any reason, immediate steps will be taken to determine the cause and extent of the injury and to apply first aid and/or decontamination if appropriate. A EWT management official will be notified immediately and the paramedics will be called if the injury requires it. If the injured person needs hospital care, they will be transported to the La Paz Regional Hospital. If exposure to a hazardous waste is involved, a copy of the manifest (where applicable), together with any appropriate safety data, will be sent with the injured person. The Emergency Coordinator will remain available for consultation.

In accordance with company policy, any person who receives an on-the-job injury will be required to report the injury to EWT management.

8.0 EVACUATION PROCEDURES

In the event that an emergency situation would pose an imminent threat to personnel health, life or safety, the Emergency Coordinator will evacuate the facility or portions of the facility affected by the incident. If evacuation is warranted, the Emergency Coordinator will advise local public safety agencies of the potential threat to persons in the vicinity of the facility. In all cases when the local fire or police departments respond, the Emergency Coordinator will cooperate fully and comply with their instructions.

8.1 EVACUATION ALERT

All personnel will be alerted by voice over the plant public address system, plant alarm system or directly by supervisory personnel if an accident or incident occurs which requires evacuation of the facility. Employees will be advised immediately if evacuation is required as determined by criteria in Section 8.2 and will be directed to leave via established routes to the designated assembly point. Evacuation routes and the designated assembly point are shown in Appendix E.

8.2 EVACUATION SITUATIONS

Situations that would warrant partial or complete evacuation of the facility are as follows.

8.2.1 Explosions

An actual or imminent explosion would require an evacuation due to potential toxic emissions, heat, pressure and flying debris. At a minimum, personnel will evacuate to the designated assembly point. A greater distance from the hazard or potential hazard may be warranted due to flying debris or toxic fumes or may be requested by the responding C.R.I.T. Fire Department.

8.2.2 Releases or Adverse Chemical Reactions

The major threat from releases or adverse chemical reactions is the potential formation of toxic fumes. All personnel without appropriate respiratory protection equipment will be evacuated in an upwind direction to a point where they are clear of the fumes.

8.2.3 Fire

Fire presents a hazard because of heat and potentially toxic fumes. All personnel not responding to the emergency will evacuate to the designated assembly point. Personnel assisting in the fire fighting efforts will respond to instructions from the C.R.I.T. Fire Department, as necessary.

8.2.4 All Other Incidents

All personnel will be evacuated from the facility and vicinity whenever their personal health and safety cannot be adequately protected.

9.0 REPORTING AND RECORDKEEPING REQUIREMENTS

9.1 OFF-SITE THREATS [40 CFR 264.56(d)]

If an emergency threatens human health or the environment outside the facility boundaries, the Emergency Coordinator will immediately notify the National Response Center as described in Section 5.2.4.

9.2 OPERATING RECORD [40 CFR 264.54, 264.56(i)]

EWT will make a note in the operating record to include the time, date and details of any incident deemed to be an emergency situation that requires the implementation of the Contingency Plan.

The contingency plan will be reviewed, and immediately amended, if necessary, whenever:

- The facility permit is revised;
- The plan fails in an emergency;
- The facility changes—in its design, construction, operation, maintenance, or other circumstances—in a way that materially increases the potential for fires, explosions, or releases of hazardous waste or hazardous waste constituents, or changes the response necessary in an emergency;
- The list of emergency coordinators changes; or
- The list of emergency equipment changes.

9.3 INCIDENT REPORTING [40 CFR 264.56(i)]

Within 15 days after an incident deemed to be an emergency situation that requires implementation of the Contingency Plan, EWT will submit a written report to the U.S. EPA Region IX office. The report will include, at a minimum, the following:

- Name, address and telephone number of the owner or operator
- Name, address and telephone number of the facility
- Date, time and type of incident (e.g., fire, explosion)
- Name and quantity of material(s) involved
- The extent of injuries, if any
- An assessment of actual or potential hazards to human health or the environment, where applicable
- Estimated quantity and disposition of recovered material that resulted from the incident.

9.4 RELEASES TO THE ENVIRONMENT

EWT will report any release to the environment, that may impact human health or the environment, from hazardous waste tank systems or secondary containment systems, to the Regional Administrator within 24 hours of its detection.

If the cause of the release was a spill that has not damaged the integrity of the system, it may be returned to service as soon as the released waste is removed and repairs, if necessary, are made.

If the cause of the release was a leak from the primary tank system into the secondary containment system, the system must be repaired prior to returning the tank system to service.

APPENDIX A

RESPONSE AGENCY ACKNOWLEDGMENTS

The Siemens Industry, Inc. Contingency Plan for the Parker, AZ facility outlines the following:

1. Layout of the facility
2. Properties of the waste handled at the facility and associated hazards
3. Entrances to the facility
4. Exits from the facility
5. Possible evacuation routes

Attached to this document is a copy of the most recent Contingency Plan for your files. Please be aware that the Colorado River Indian Tribes (CRIT) Fire Department will establish an Incident Command System in the event of a facility emergency.

Organization: PARKER PD

Printed Name: SGT MIKE THOMPSON

Signature: Mike Thompson

Date: 5/6/12

Please acknowledge the receipt of the Contingency Plan by signing, dating and returning this letter to the facility.

RECEIVED JUL 23 2012

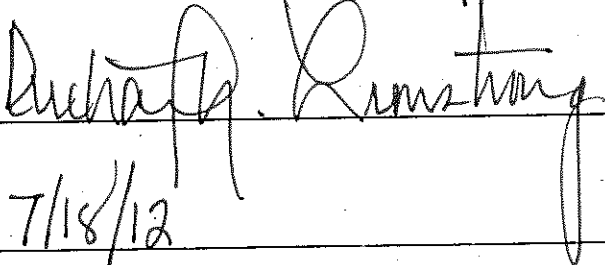
The Siemens Industry, Inc. Contingency Plan for the Parker, AZ facility outlines the following:

1. Layout of the facility
2. Properties of the waste handled at the facility and associated hazards
3. Entrances to the facility
4. Exits from the facility
5. Possible evacuation routes

Attached to this document is a copy of the most recent Contingency Plan for your files. Please be aware that the Colorado River Indian Tribes (CRIT) Fire Department will establish an Incident Command System in the event of a facility emergency.

Organization: Colorado River Indian Tribes - Law Enforcement Services

Printed Name: Richard M. Armstrong, Chief of Police

Signature: 

Date: 7/18/12

Please acknowledge the receipt of the Contingency Plan by signing, dating and returning this letter to the facility.

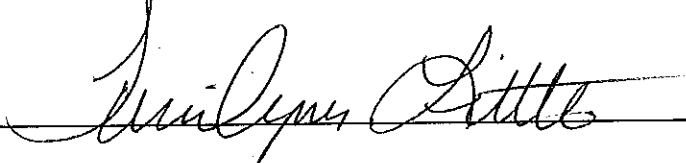
The Siemens Industry, Inc. Contingency Plan for the Parker, AZ facility outlines the following:

1. Layout of the facility
2. Properties of the waste handled at the facility and associated hazards
3. Entrances to the facility
4. Exits from the facility
5. Possible evacuation routes

Attached to this document is a copy of the most recent Contingency Plan for your files. Please be aware that the Colorado River Indian Tribes (CRIT) Fire Department will establish an Incident Command System in the event of a facility emergency.

Organization: C.R.I.T. FIRE DEPARTMENT

Printed Name: TERRILYNN LITTLE

Signature: 

Date: 7-20-2012

Please acknowledge the receipt of the Contingency Plan by signing, dating and returning this letter to the facility.

The Siemens Industry, Inc. Contingency Plan for the Parker, AZ facility outlines the following:

1. Layout of the facility
2. Properties of the waste handled at the facility and associated hazards
3. Entrances to the facility
4. Exits from the facility
5. Possible evacuation routes

Attached to this document is a copy of the most recent Contingency Plan for your files. Please be aware that the Colorado River Indian Tribes (CRIT) Fire Department will establish an Incident Command System in the event of a facility emergency.

Organization: LA Paz Regional Hospital

Printed Name: M Victoria Chack

Signature: 

Date: 4/23/12

Please acknowledge the receipt of the Contingency Plan by signing, dating and returning this letter to the facility.



Shipment Receipt

Transaction Date: 19 Apr 2012

Tracking Number: 1ZA9520E2493206168

1 Address Information

Ship To: La Paz County LEPC Steve Biro (or successor) 1108 Joshua Avenue PARKER AZ 853445735	Ship From: Siemens Industry, Inc. Michelle Goodman 2523 Mutahar Street Traffic Controller Office/Side Door Parker AZ 85344 Telephone: 928-669-5758 x10	Return Address: Siemens Industry, Inc. Michelle Goodman 2523 Mutahar Street Traffic Controller Office/Side Door PARKER AZ 85344 Telephone: 928-669-5758 x10
---	--	---

2 Package Information

Weight	Dimensions / Packaging	Declared Value	Reference Numbers
1. Letter	UPS Letter		Reference#1 - Contingency Plan

3 UPS Shipping Service and Shipping Options

Service:	UPS Next Day Air		
Guaranteed By:	End of Day Friday, Apr 20, 2012		
Shipping Fees Subtotal:	22.80 USD	Additional Shipping Options	
Transportation	18.00 USD	Delivery Confirmation:	
Fuel Surcharge	2.80 USD	Package 1: Signature Required	3.50 USD
Delivery Area Surcharge- Extended		Total Shipping Charges	26.30 USD
Package 1	2.00 USD		

4 Payment Information

Bill Shipping Charges to:

Shipper's Account A9520E

A discount has been applied to the Daily rates for this shipment

Total Charged:	26.30 USD
Negotiated Total:	12.98 USD

Note: Your invoice may vary from the displayed reference rates.

* For delivery and guarantee information, see the UPS Service Guide. To speak to a customer service representative, call 1-800-PICK-UPS for domestic services and 1-800-782-7892 for international services.

Responsibility for Loss or Damage

Unless a greater value is recorded in the declared value field as appropriate for the UPS shipping system used, the shipper agrees that the released value of each package covered by this receipt is no greater than \$100, which is a reasonable value under the circumstances surrounding the transportation. If additional protection is desired, a shipper may increase UPS's limit of liability by declaring a higher value and paying an additional charge. UPS does not accept for transportation and shipper's requesting service through the Internet are prohibited from shipping packages with a value of more than \$50,000. The maximum liability per package assumed by UPS shall not exceed \$50,000, regardless of value in excess of the maximum. Claims not made within nine months after delivery of the package (sixty days for international shipments), or in the case of failure to make delivery, nine months after a reasonable time for delivery has elapsed (sixty days for international shipments), shall be deemed waived. The entry of a C.O.D. amount is not a declaration of value for carriage purposes. All checks or other negotiable instruments tendered in payment of C.O.D. will be accepted by UPS at shipper's risk. UPS shall not be liable for any special, incidental, or consequential damages. All shipments are subject to the terms and conditions contained in the UPS Tariff and the UPS Terms and Conditions of Service, which can be found at www.ups.com.



Shipment Receipt

Transaction Date: 19 Apr 2012

Tracking Number:

1ZA9520E2490171559 ✓

1 Address Information

Ship To:
CRIT Fire Department
Terylyn Little (or Successor)
23701 Mohave Avenue
PARKER AZ 853447700

Ship From:
Siemens Industry, Inc.
Michelle Goodman
2523 Mutahar Street
Traffic Controller Office/Side Door
Parker AZ 85344
Telephone: 928-669-5758
x10

Return Address:
Siemens Industry, Inc.
Michelle Goodman
2523 Mutahar Street
Traffic Controller Office/Side Door
PARKER AZ 85344
Telephone: 928-669-5758
x10

2 Package Information

Weight	Dimensions / Packaging	Declared Value	Reference Numbers
1. Letter	UPS Letter		Reference#1 - Contingency Plan

3 UPS Shipping Service and Shipping Options

Service:	UPS Next Day Air		
Guaranteed By:	End of Day Friday, Apr 20, 2012		
Shipping Fees Subtotal:	22.80 USD	Additional Shipping Options	
Transportation	18.00 USD	Delivery Confirmation:	
Fuel Surcharge	2.80 USD	Package 1: Signature Required	3.50 USD
Delivery Area Surcharge- Extended		Total Shipping Charges	26.30 USD
Package 1	2.00 USD		

4 Payment Information

Bill Shipping Charges to:

Shipper's Account A9520E

A discount has been applied to the Daily rates for this shipment

Total Charged:	26.30 USD
Negotiated Total:	12.98 USD

Note: Your invoice may vary from the displayed reference rates.

* For delivery and guarantee information, see the UPS Service Guide. To speak to a customer service representative, call 1-800-PICK-UPS for domestic services and 1-800-782-7892 for international services.

Responsibility for Loss or Damage

Unless a greater value is recorded in the declared value field as appropriate for the UPS shipping system used, the shipper agrees that the released value of each package covered by this receipt is no greater than \$100, which is a reasonable value under the circumstances surrounding the transportation. If additional protection is desired, a shipper may increase UPS's limit of liability by declaring a higher value and paying an additional charge. UPS does not accept for transportation and shipper's requesting service through the Internet are prohibited from shipping packages with a value of more than \$50,000. The maximum liability per package assumed by UPS shall not exceed \$50,000, regardless of value in excess of the maximum. Claims not made within nine months after delivery of the package (sixty days for international shipments), or in the case of failure to make delivery, nine months after a reasonable time for delivery has elapsed (sixty days for international shipments), shall be deemed waived. The entry of a C.O.D. amount is not a declaration of value for carriage purposes. All checks or other negotiable instruments tendered in payment of C.O.D. will be accepted by UPS at shipper's risk. UPS shall not be liable for any special, incidental, or consequential damages. All shipments are subject to the terms and conditions contained in the UPS Tariff and the UPS Terms and Conditions of Service, which can be found at www.ups.com.



Shipment Receipt

Transaction Date: 19 Apr 2012

Tracking Number:

1ZA9520E2490481330

1 Address Information

Ship To:	Ship From:	Return Address:
Perker Fire Department	Siemens Industry, Inc.	Siemens Industry, Inc.
Chief Johnny Rather	Michelle Goodman	Michelle Goodman
1101 Arizona Avenue	2523 Mutehar Street	2523 Mutehar Street
PARKER AZ 853445743	Traffic Controller Office/Side Door	Traffic Controller Office/Side Door
	Parker AZ 85344	PARKER AZ 85344
	Telephone: 928-669-5758	Telephone: 928-669-5758
	x10	x10

2 Package Information

Weight	Dimensions / Packaging	Declared Value	Reference Numbers
1. Letter	UPS Letter		Reference#1 - Contingency Plan

3 UPS Shipping Service and Shipping Options

Service:	UPS Next Day Air		
Guaranteed By:	End of Day Friday, Apr 20, 2012		
Shipping Fees Subtotal:	22.80 USD	Additional Shipping Options	
Transportation	18.00 USD	Delivery Confirmation:	
Fuel Surcharge	2.80 USD	Package 1: Signature Required	3.50 USD
Delivery Area Surcharge- Extended		Total Shipping Charges	26.30 USD
Package 1	2.00 USD		

4 Payment Information

Bill Shipping Charges to: Shipper's Account A9520E

A discount has been applied to the Daily rates for this shipment

Total Charged:	26.30 USD
Negotiated Total:	12.98 USD

Note: Your invoice may vary from the displayed reference rates.

* For delivery and guarantee information, see the UPS Service Guide. To speak to a customer service representative, call 1-800-PICK-UPS for domestic services and 1-800-782-7892 for international services.

Responsibility for Loss or Damage

Unless a greater value is recorded in the declared value field as appropriate for the UPS shipping system used, the shipper agrees that the released value of each package covered by this receipt is no greater than \$100, which is a reasonable value under the circumstances surrounding the transportation. If additional protection is desired, a shipper may increase UPS's limit of liability by declaring a higher value and paying an additional charge. UPS does not accept for transportation and shipper's requesting service through the Internet are prohibited from shipping packages with a value of more than \$50,000. The maximum liability per package assumed by UPS shall not exceed \$50,000, regardless of value in excess of the maximum. Claims not made within nine months after delivery of the package (sixty days for international shipments), or in the case of failure to make delivery, nine months after a reasonable time for delivery has elapsed (sixty days for international shipments), shall be deemed waived. The entry of a C.O.D. amount is not a declaration of value for carriage purposes. All checks or other negotiable instruments tendered in payment of C.O.D. will be accepted by UPS at shipper's risk. UPS shall not be liable for any special, incidental, or consequential damages. All shipments are subject to the terms and conditions contained in the UPS Tariff and the UPS Terms and Conditions of Service, which can be found at www.ups.com.



Shipment Receipt

Transaction Date: 19 Apr 2012

Tracking Number:

1ZA9520E2491229941 ✓

1 Address Information

Ship To:
CRIT Police Department
Chief R. Armstrong (or successor)
26600 Mohave Road
PARKER AZ 853447737

Ship From:
Siemens Industry, Inc.
Michelle Goodman
2523 Mutahar Street
Traffic Controller Office/Side Door
Parker AZ 85344
Telephone: 928-669-5758
x10

Return Address:
Siemens Industry, Inc.
Michelle Goodman
2523 Mutahar Street
Traffic Controller Office/Side Door
PARKER AZ 85344
Telephone: 928-669-5758
x10

2 Package Information

Weight	Dimensions / Packaging	Declared Value	Reference Numbers
1. Letter	UPS Letter		Reference#1 - Contingency Plan

3 UPS Shipping Service and Shipping Options

Service:	UPS Next Day Air		
Guaranteed By:	End of Day Friday, Apr 20, 2012		
Shipping Fees Subtotal:	22.80 USD	Additional Shipping Options	
Transportation	18.00 USD	Delivery Confirmation:	
Fuel Surcharge	2.80 USD	Package 1: Signature Required	3.50 USD
Delivery Area Surcharge- Extended		Total Shipping Charges	26.30 USD
Package 1	2.00 USD		

4 Payment Information

Bill Shipping Charges to:

Shipper's Account A9520E

A discount has been applied to the Daily rates for this shipment

Total Charged:	26.30 USD
Negotiated Total:	12.98 USD

Note: Your invoice may vary from the displayed reference rates.

* For delivery and guarantee information, see the UPS Service Guide. To speak to a customer service representative, call 1-800-PICK-UPS for domestic services and 1-800-782-7892 for international services.

Responsibility for Loss or Damage

Unless a greater value is recorded in the declared value field as appropriate for the UPS shipping system used, the shipper agrees that the released value of each package covered by this receipt is no greater than \$100, which is a reasonable value under the circumstances surrounding the transportation. If additional protection is desired, a shipper may increase UPS's limit of liability by declaring a higher value and paying an additional charge. UPS does not accept for transportation and shipper's requesting service through the Internet are prohibited from shipping packages with a value of more than \$50,000. The maximum liability per package assumed by UPS shall not exceed \$50,000, regardless of value in excess of the maximum. Claims not made within nine months after delivery of the package (sixty days for international shipments), or in the case of failure to make delivery, nine months after a reasonable time for delivery has elapsed (sixty days for international shipments), shall be deemed waived. The entry of a C.O.D. amount is not a declaration of value for carriage purposes. All checks or other negotiable instruments tendered in payment of C.O.D. will be accepted by UPS at shipper's risk. UPS shall not be liable for any special, incidental, or consequential damages. All shipments are subject to the terms and conditions contained in the UPS Tariff and the UPS Terms and Conditions of Service, which can be found at www.ups.com.



Shipment Receipt

Transaction Date: 19 Apr 2012

Tracking Number:

1ZA9520E2492025721 ✓

1 Address Information

Ship To: Parker Police Department Sgt. Thompson (or successor) 1314 11th Street PARKER AZ 853445615	Ship From: Siemens Industry, Inc. Michelle Goodman 2523 Mutehar Street Traffic Controller Office/Side Door Parker AZ 85344 Telephone: 928-669-5758 x10	Return Address: Siemens Industry, Inc. Michelle Goodman 2523 Mutehar Street Traffic Controller Office/Side Door PARKER AZ 85344 Telephone: 928-669-5758 x10
--	--	---

2 Package Information

Weight	Dimensions / Packaging	Declared Value	Reference Numbers
1. Letter	UPS Letter		Reference#1 - Contingency Plan

3 UPS Shipping Service and Shipping Options

Service:	UPS Next Day Air		
Guaranteed By:	End of Day Friday, Apr 20, 2012		
Shipping Fees Subtotal:	22.80 USD	Additional Shipping Options	
Transportation	18.00 USD	Delivery Confirmation:	
Fuel Surcharge	2.80 USD	Package 1: Signature Required	3.50 USD
Delivery Area Surcharge- Extended		Total Shipping Charges	26.30 USD
Package 1	2.00 USD		

4 Payment Information

Bill Shipping Charges to:

Shipper's Account A9520E

A discount has been applied to the Daily rates for this shipment

Total Charged:	26.30 USD
Negotiated Total:	12.98 USD

Note: Your invoice may vary from the displayed reference rates.

* For delivery and guarantee information, see the UPS Service Guide. To speak to a customer service representative, call 1-800-PICK-UPS for domestic services and 1-800-782-7892 for international services.

Responsibility for Loss or Damage

Unless a greater value is recorded in the declared value field as appropriate for the UPS shipping system used, the shipper agrees that the released value of each package covered by this receipt is no greater than \$100, which is a reasonable value under the circumstances surrounding the transportation. If additional protection is desired, a shipper may increase UPS's limit of liability by declaring a higher value and paying an additional charge. UPS does not accept for transportation and shipper's requesting service through the Internet are prohibited from shipping packages with a value of more than \$50,000. The maximum liability per package assumed by UPS shall not exceed \$50,000, regardless of value in excess of the maximum. Claims not made within nine months after delivery of the package (sixty days for international shipments), or in the case of failure to make delivery, nine months after a reasonable time for delivery has elapsed (sixty days for international shipments), shall be deemed waived. The entry of a C.O.D. amount is not a declaration of value for carriage purposes. All checks or other negotiable instruments tendered in payment of C.O.D. will be accepted by UPS at shipper's risk. UPS shall not be liable for any special, incidental, or consequential damages. All shipments are subject to the terms and conditions contained in the UPS Tariff and the UPS Terms and Conditions of Service, which can be found at www.ups.com.



Shipment Receipt

Transaction Date: 19 Apr 2012

Tracking Number:

1ZA9520E2493393500 ✓

1 Address Information

Ship To:
CRIT EPO
Guthrie Dick
26600 Mohave Road
PARKER AZ 853447737

Ship From:
Siemens Industry, Inc.
Michelle Goodman
2523 Mutahar Street
Traffic Controller Office/Side Door
Parker AZ 85344
Telephone: 928-669-5758
x10

Return Address:
Siemens Industry, Inc.
Michelle Goodman
2523 Mutahar Street
Traffic Controller Office/Side Door
Parker AZ 85344
Telephone: 928-669-5758
x10

2 Package Information

Weight	Dimensions / Packaging	Declared Value	Reference Numbers
1. Letter	UPS Letter		Reference#1 - Contingency Plan

3 UPS Shipping Service and Shipping Options

Service:	UPS Next Day Air		
Guaranteed By:	End of Day Friday, Apr 20, 2012		
Shipping Fees Subtotal:	22.80 USD	Additional Shipping Options	
Transportation	18.00 USD	Delivery Confirmation:	
Fuel Surcharge	2.80 USD	Package 1: Signature Required	3.50 USD
Delivery Area Surcharge- Extended		Total Shipping Charges	26.30 USD
Package 1	2.00 USD		

4 Payment Information

Bill Shipping Charges to:

Shipper's Account A9520E

A discount has been applied to the Daily rates for this shipment

Total Charged:	26.30 USD
Negotiated Total:	12.98 USD

Note: Your invoice may vary from the displayed reference rates.

* For delivery and guarantee information, see the UPS Service Guide. To speak to a customer service representative, call 1-800-PICK-UPS for domestic services and 1-800-782-7892 for international services.

Responsibility for Loss or Damage

Unless a greater value is recorded in the declared value field as appropriate for the UPS shipping system used, the shipper agrees that the released value of each package covered by this receipt is no greater than \$100, which is a reasonable value under the circumstances surrounding the transportation. If additional protection is desired, a shipper may increase UPS's limit of liability by declaring a higher value and paying an additional charge. UPS does not accept for transportation and shipper's requesting service through the Internet are prohibited from shipping packages with a value of more than \$50,000. The maximum liability per package assumed by UPS shall not exceed \$50,000, regardless of value in excess of the maximum. Claims not made within nine months after delivery of the package (sixty days for international shipments), or in the case of failure to make delivery, nine months after a reasonable time for delivery has elapsed (sixty days for international shipments), shall be deemed waived. The entry of a C.O.D. amount is not a declaration of value for carriage purposes. All checks or other negotiable instruments tendered in payment of C.O.D. will be accepted by UPS at shipper's risk. UPS shall not be liable for any special, incidental, or consequential damages. All shipments are subject to the terms and conditions contained in the UPS Tariff and the UPS Terms and Conditions of Service, which can be found at www.ups.com.



Shipment Receipt

Transaction Date: 19 Apr 2012

Tracking Number:

1ZA9520E2494963115 ✓

1 Address Information

Ship To: La Paz Regional Hospital Vickie Clark (or successor) 1200 Mohave Road PARKER AZ 853446349	Ship From: Siemens Industry, Inc. Michelle Goodman 2523 Mutahar Street Traffic Controller Office/Side Door Parker AZ 85344 Telephone: 928-669-5758 x10	Return Address: Siemens Industry, Inc. Michelle Goodman 2523 Mutahar Street Traffic Controller Office/Side Door PARKER AZ 85344 Telephone: 928-669-5758 x10
---	--	---

2 Package Information

Weight	Dimensions / Packaging	Declared Value	Reference Numbers
1. Letter	UPS Letter		Reference#1 - Contingency Plan

3 UPS Shipping Service and Shipping Options

Service:	UPS Next Day Air		
Guaranteed By:	End of Day Friday, Apr 20, 2012		
Shipping Fees Subtotal:	22.80 USD	Additional Shipping Options	
Transportation	18.00 USD	Delivery Confirmation:	
Fuel Surcharge	2.80 USD	Package 1: Signature Required	3.50 USD
Delivery Area Surcharge- Extended		Total Shipping Charges	26.30 USD
Package 1	2.00 USD		

4 Payment Information

Bill Shipping Charges to:

Shipper's Account A9520E

A discount has been applied to the Daily rates for this shipment

Total Charged:	26.30 USD
Negotiated Total:	12.98 USD

Note: Your invoice may vary from the displayed reference rates.

* For delivery and guarantee information, see the UPS Service Guide. To speak to a customer service representative, call 1-800-PICK-UPS for domestic services and 1-800-782-7892 for international services.

Responsibility for Loss or Damage

Unless a greater value is recorded in the declared value field as appropriate for the UPS shipping system used, the shipper agrees that the released value of each package covered by this receipt is no greater than \$100, which is a reasonable value under the circumstances surrounding the transportation. If additional protection is desired, a shipper may increase UPS's limit of liability by declaring a higher value and paying an additional charge. UPS does not accept for transportation and shipper's requesting service through the Internet are prohibited from shipping packages with a value of more than \$50,000. The maximum liability per package assumed by UPS shall not exceed \$50,000, regardless of value in excess of the maximum. Claims not made within nine months after delivery of the package (sixty days for international shipments), or in the case of failure to make delivery, nine months after a reasonable time for delivery has elapsed (sixty days for international shipments), shall be deemed waived. The entry of a C.O.D. amount is not a declaration of value for carriage purposes. All checks or other negotiable instruments tendered in payment of C.O.D. will be accepted by UPS at shipper's risk. UPS shall not be liable for any special, incidental, or consequential damages. All shipments are subject to the terms and conditions contained in the UPS Tariff and the UPS Terms and Conditions of Service, which can be found at www.ups.com.



Shipment Receipt

Transaction Date: 27 May 2014

Tracking Number:

1ZA9520E0297270122

1 Address Information

Ship To:
La Paz County LEPC
Steve Biro (or Successor)
1108 Joshua Avenue
PARKER AZ 853445735

Ship From:
Evoqua Water Technologies LLC
Michelle G.
2523 S. Mutahar Street
Parker AZ 85344
Telephone: 928-669-5758

Return Address:
Evoqua Water Technologies LLC
Michelle G.
2523 S. Mutahar Street
PARKER AZ 85344
Telephone: 928-669-5758

2 Package Information

Weight	Dimensions / Packaging	Declared Value	Reference Numbers
1. Letter (Letter billable)	UPS Letter		Reference#1 - Updated Contingency Plan Reference#2 -

3 UPS Shipping Service and Shipping Options

Service:	UPS 2nd Day Air		
Shipping Fees Subtotal:		17.24 USD	Additional Shipping Options
Transportation		13.35 USD	Quantum View Notify E-mail Notifications:
Fuel Surcharge		1.64 USD	1 james.r.provins@evoqua.com: Exception, Delivery
Delivery Area Surcharge- Extended Package 1		2.25 USD	No Charge

4 Payment Information

Bill Shipping Charges to:	Shipper's Account A9520E
A discount has been applied to the Daily rates for this shipment	
Total Charged:	17.24 USD
Negotiated Total:	6.49 USD

Note: Your invoice may vary from the displayed reference rates.

* For delivery and guarantee information, see the UPS Service Guide. To speak to a customer service representative, call 1-800-PICK-UPS for domestic services and 1-800-782-7892 for international services.

Responsibility for Loss or Damage

UPS's liability for loss or damage to each domestic package or international shipment is limited to \$100. Unless a greater value is recorded in the declared value field of the UPS shipping system used, the shipper agrees that the released value of each package covered by this receipt is no greater than \$100, which is a reasonable value under the circumstances surrounding the transportation. To increase UPS's limit of liability for loss or damage above \$100, the shipper must declare a higher value and pay an additional charge. See the UPS Tariff/Terms and Conditions of Service at www.ups.com for UPS's liability limits, maximum declared values, and other terms of service. UPS does not accept for transportation and shipments are prohibited from shipping packages with a value of more than \$50,000. Claims not made within nine months after delivery of the package (sixty days for international shipments), or in the case of failure to make delivery, nine months after a reasonable time for delivery has elapsed (sixty days for international shipments), shall be deemed waived. The entry of a C.O.D. amount is not a declaration of value for carriage purposes. All checks or other negotiable instruments tendered in payment of C.O.D. will be accepted by UPS at shipper's risk. UPS shall not be liable for any special, incidental, or consequential damages. All shipments are subject to the terms and conditions contained in the UPS Tariff/Terms and Conditions of Service (available at www.ups.com).



Shipment Receipt

Transaction Date: 27 May 2014

Tracking Number:

1ZA9520E0295260119

1 Address Information

Ship To: CRIT Fire Department Terylyn Little or Successor 23701 Mohave Avenue PARKER AZ 853447700	Ship From: Evoqua Water Technologies LLC Michelle G. 2523 S. Mutahar Street Parker AZ 85344 Telephone:928-669-5758	Return Address: Evoqua Water Technologies LLC Michelle G. 2523 S. Mutahar Street PARKER AZ 85344 Telephone:928-669-5758
--	--	---

2 Package Information

Weight	Dimensions / Packaging	Declared Value	Reference Numbers
1. Letter (Letter billable)	UPS Letter		Reference#1 - Updated Contingency Plan Reference#2 -

3 UPS Shipping Service and Shipping Options

Service:	UPS 2nd Day Air		
Shipping Fees Subtotal:		17.24 USD	Additional Shipping Options
Transportation		13.35 USD	Quantum View Notify E-mail Notifications:
Fuel Surcharge		1.64 USD	1 james.r.provins@evoqua.com: Exception, Delivery
Delivery Area Surcharge- Extended Package 1		2.25 USD	No Charge

4 Payment Information

Bill Shipping Charges to: Shipper's Account A9520E

A discount has been applied to the Daily rates for this shipment

Total Charged:	17.24 USD
Negotiated Total:	6.49 USD

Note: Your invoice may vary from the displayed reference rates.

* For delivery and guarantee information, see the UPS Service Guide. To speak to a customer service representative, call 1-800-PICK-UPS for domestic services and 1-800-782-7892 for international services.

Responsibility for Loss or Damage

UPS's liability for loss or damage to each domestic package or international shipment is limited to \$100. Unless a greater value is recorded in the declared value field of the UPS shipping system used, the shipper agrees that the released value of each package covered by this receipt is no greater than \$100, which is a reasonable value under the circumstances surrounding the transportation. To increase UPS's limit of liability for loss or damage above \$100, the shipper must declare a higher value and pay an additional charge. See the UPS Tariff/Terms and Conditions of Service at www.ups.com for UPS's liability limits, maximum declared values, and other terms of service. UPS does not accept for transportation and shippers are prohibited from shipping packages with a value of more than \$50,000. Claims not made within nine months after delivery of the package (sixty days for international shipments), or in the case of failure to make delivery, nine months after a reasonable time for delivery has elapsed (sixty days for international shipments), shall be deemed waived. The entry of a C.O.D. amount is not a declaration of value for carriage purposes. All checks or other negotiable instruments tendered in payment of C.O.D. will be accepted by UPS at shipper's risk. UPS shall not be liable for any special, incidental, or consequential damages. All shipments are subject to the terms and conditions contained in the UPS Tariff/Terms and Conditions of Service (available at www.ups.com).



Shipment Receipt

Transaction Date: 27 May 2014

Tracking Number:

1ZA9520E0299562901

1 Address Information

Ship To:
CRIT Police Department
Chief William Ponce (or successor)
26800 Mohave Road
PARKER AZ 853447737

Ship From:
Evoqua Water Technologies LLC
Michelle G.
2523 S. Mutehar Street
Parker AZ 85344
Telephone: 928-869-5758

Return Address:
Evoqua Water Technologies LLC
Michelle G.
2523 S. Mutehar Street
PARKER AZ 85344
Telephone: 928-869-5758

2 Package Information

Weight	Dimensions / Packaging	Declared Value	Reference Numbers
1. Letter (Letter billable)	UPS Letter		Reference#1 - Updated Contingency Plan Reference#2 -

3 UPS Shipping Service and Shipping Options

Service:	UPS 2nd Day Air		
Shipping Fees Subtotal:		17.24 USD	Additional Shipping Options
Transportation		13.35 USD	Quantum View Notify E-mail Notifications:
Fuel Surcharge		1.64 USD	1 james.r.provins@evoqua.com: Exception, Delivery
Delivery Area Surcharge- Extended			
Package 1		2.25 USD	No Charge

4 Payment Information

Bill Shipping Charges to: Shipper's Account A9520E

A discount has been applied to the Daily rates for this shipment

Total Charged:
Negotiated Total:

17.24 USD
6.49 USD

Note: Your invoice may vary from the displayed reference rates.

* For delivery and guarantee information, see the UPS Service Guide. To speak to a customer service representative, call 1-800-PICK-UPS for domestic services and 1-800-782-7892 for international services.

Responsibility for Loss or Damage

UPS's liability for loss or damage to each domestic package or international shipment is limited to \$100. Unless a greater value is recorded in the declared value field of the UPS shipping system used, the shipper agrees that the released value of each package covered by this receipt is no greater than \$100, which is a reasonable value under the circumstances surrounding the transportation. To increase UPS's limit of liability for loss or damage above \$100, the shipper must declare a higher value and pay an additional charge. See the UPS Tariff/Terms and Conditions of Service at www.ups.com for UPS's liability limits, maximum declared values, and other terms of service. UPS does not accept for transportation and shippers are prohibited from shipping packages with a value of more than \$50,000. Claims not made within nine months after delivery of the package (sixty days for international shipments), or in the case of failure to make delivery, nine months after a reasonable time for delivery has elapsed (sixty days for international shipments), shall be deemed waived. The entry of a C.O.D. amount is not a declaration of value for carriage purposes. All checks or other negotiable instruments tendered in payment of C.O.D. will be accepted by UPS at shipper's risk. UPS shall not be liable for any special, incidental, or consequential damages. All shipments are subject to the terms and conditions contained in the UPS Tariff/Terms and Conditions of Service (available at www.ups.com).



Shipment Receipt

Transaction Date: 27 May 2014

Tracking Number:

1ZA9520E0299794492

1 Address Information

Ship To:
Parker Fire Department
Chief Johnny Rather (or successor)
1101 Arizona Avenue
PARKER AZ 853445743

Ship From:
Evoqua Water Technologies LLC
Michelle G.
2523 S. Mutahar Street
Parker AZ 85344
Telephone: 928-669-5758

Return Address:
Evoqua Water Technologies LLC
Michelle G.
2523 S. Mutahar Street
PARKER AZ 85344
Telephone: 928-669-5758

2 Package Information

Weight	Dimensions / Packaging	Declared Value	Reference Numbers
1. Letter (Letter billable)	UPS Letter		Reference#1 - Updated Contingency Plan Reference#2 -

3 UPS Shipping Service and Shipping Options

Service:	UPS 2nd Day Air		
Shipping Fees Subtotal:		17.24 USD	Additional Shipping Options
Transportation		13.35 USD	Quantum View Notify E-mail Notifications:
Fuel Surcharge		1.64 USD	1 james.r.provins@evoqua.com: Exception, Delivery
Delivery Area Surcharge- Extended Package 1		2.25 USD	No Charge

4 Payment Information

Bill Shipping Charges to: Shipper's Account A9520E

A discount has been applied to the Daily rates for this shipment

Total Charged:
Negotiated Total:

17.24 USD
6.49 USD

Note: Your invoice may vary from the displayed reference rates.

* For delivery and guarantee information, see the UPS Service Guide. To speak to a customer service representative, call 1-800-PICK-UPS for domestic services and 1-800-782-7892 for international services.

Responsibility for Loss or Damage

UPS's liability for loss or damage to each domestic package or international shipment is limited to \$100. Unless a greater value is recorded in the declared value field of the UPS shipping system used, the shipper agrees that the released value of each package covered by this receipt is no greater than \$100, which is a reasonable value under the circumstances surrounding the transportation. To increase UPS's limit of liability for loss or damage above \$100, the shipper must declare a higher value and pay an additional charge. See the UPS Tariff/Terms and Conditions of Service at www.ups.com for UPS's liability limits, maximum declared values, and other terms of service. UPS does not accept for transportation and shippers are prohibited from shipping packages with a value of more than \$50,000. Claims not made within nine months after delivery of the package (sixty days for international shipments), or in the case of failure to make delivery, nine months after a reasonable time for delivery has elapsed (sixty days for international shipments), shall be deemed waived. The entry of a C.O.D. amount is not a declaration of value for carriage purposes. All checks or other negotiable instruments tendered in payment of C.O.D. will be accepted by UPS at shipper's risk. UPS shall not be liable for any special, incidental, or consequential damages. All shipments are subject to the terms and conditions contained in the UPS Tariff/Terms and Conditions of Service (available at www.ups.com).



Shipment Receipt

Transaction Date: 27 May 2014

Tracking Number:

1ZA9520E0297090880

1 Address Information

Ship To:
Parker Police Department
Clay Romo (or successor)
1314 11th Street
PARKER AZ 853445615

Ship From:
Evoqua Water Technologies LLC
Michelle G.
2523 S. Mutahar Street
Parker AZ 85344
Telephone:928-669-5758

Return Address:
Evoqua Water Technologies LLC
Michelle G.
2523 S. Mutahar Street
PARKER AZ 85344
Telephone:928-669-5758

2 Package Information

Weight	Dimensions / Packaging	Declared Value	Reference Numbers
1. Letter (Letter billable)	UPS Letter		Reference#1 - Updated Contingency Plan Reference#2 -

3 UPS Shipping Service and Shipping Options

Service:	UPS 2nd Day Air		
Shipping Fees Subtotal:		17.24 USD	Additional Shipping Options
Transportation		13.35 USD	Quantum View Notify E-mail Notifications:
Fuel Surcharge		1.64 USD	1 james.r.provins@evoqua.com: Exception, Delivery
Delivery Area Surcharge- Extended Package 1		2.25 USD	No Charge

4 Payment Information

Bill Shipping Charges to: Shipper's Account A9520E

A discount has been applied to the Daily rates for this shipment

Total Charged:
Negotiated Total:

17.24 USD
6.49 USD

Note: Your Invoice may vary from the displayed reference rates.

* For delivery and guarantee information, see the UPS Service Guide. To speak to a customer service representative, call 1-800-PICK-UPS for domestic services and 1-800-782-7892 for international services.

Responsibility for Loss or Damage

UPS's liability for loss or damage to each domestic package or international shipment is limited to \$100. Unless a greater value is recorded in the declared value field of the UPS shipping system used, the shipper agrees that the released value of each package covered by this receipt is no greater than \$100, which is a reasonable value under the circumstances surrounding the transportation. To increase UPS's limit of liability for loss or damage above \$100, the shipper must declare a higher value and pay an additional charge. See the UPS Tariff/Terms and Conditions of Service at www.ups.com for UPS's liability limits, maximum declared values, and other terms of service. UPS does not accept for transportation and shippers are prohibited from shipping packages with a value of more than \$50,000. Claims not made within nine months after delivery of the package (sixty days for international shipments), or in the case of failure to make delivery, nine months after a reasonable time for delivery has elapsed (sixty days for international shipments), shall be deemed waived. The entry of a C.O.D. amount is not a declaration of value for carriage purposes. All checks or other negotiable instruments tendered in payment of C.O.D. will be accepted by UPS at shipper's risk. UPS shall not be liable for any special, incidental, or consequential damages. All shipments are subject to the terms and conditions contained in the UPS Tariff/Terms and Conditions of Service (available at www.ups.com).



Shipment Receipt

Transaction Date: 27 May 2014

Tracking Number:

1ZA9520E0298508070

1 Address Information

Ship To: La Paz Regional Hospital Vickie Clark (or successor) 1200 Mohave Road PARKER AZ 853446349	Ship From: Evoqua Water Technologies LLC Michelle G. 2523 S. Mutahar Street Parker AZ 85344 Telephone:928-669-5758	Return Address: Evoqua Water Technologies LLC Michelle G. 2523 S. Mutahar Street PARKER AZ 85344 Telephone:928-669-5758
---	--	---

2 Package Information

Weight	Dimensions / Packaging	Declared Value	Reference Numbers
1. Letter (Letter billable)	UPS Letter		Reference#1 - Updated Contingency Plan Reference#2 -

3 UPS Shipping Service and Shipping Options

Service:	UPS 2nd Day Air		
Shipping Fees Subtotal:		17.24 USD	Additional Shipping Options
Transportation		13.35 USD	Quantum View Notify E-mail Notifications:
Fuel Surcharge		1.64 USD	1 james.r.provins@evoqua.com: Exception, Delivery
Delivery Area Surcharge- Extended Package 1		2.25 USD	No Charge

4 Payment Information

Bill Shipping Charges to:	Shipper's Account A9520E
A discount has been applied to the Daily rates for this shipment	
Total Charged:	17.24 USD
Negotiated Total:	6.49 USD

Note: Your Invoice may vary from the displayed reference rates.

* For delivery and guarantee information, see the UPS Service Guide. To speak to a customer service representative, call 1-800-PICK-UPS for domestic services and 1-800-782-7892 for international services.

Responsibility for Loss or Damage

UPS's liability for loss or damage to each domestic package or international shipment is limited to \$100. Unless a greater value is recorded in the declared value field of the UPS shipping system used, the shipper agrees that the released value of each package covered by this receipt is no greater than \$100, which is a reasonable value under the circumstances surrounding the transportation. To increase UPS's limit of liability for loss or damage above \$100, the shipper must declare a higher value and pay an additional charge. See the UPS Tariff/Terms and Conditions of Service at www.ups.com for UPS's liability limits, maximum declared values, and other terms of service. UPS does not accept for transportation and shippers are prohibited from shipping packages with a value of more than \$50,000. Claims not made within nine months after delivery of the package (sixty days for international shipments), or in the case of failure to make delivery, nine months after a reasonable time for delivery has elapsed (sixty days for international shipments), shall be deemed waived. The entry of a C.O.D. amount is not a declaration of value for carriage purposes. All checks or other negotiable instruments tendered in payment of C.O.D. will be accepted by UPS at shipper's risk. UPS shall not be liable for any special, incidental, or consequential damages. All shipments are subject to the terms and conditions contained in the UPS Tariff/Terms and Conditions of Service (available at www.ups.com).



Shipment Receipt

Transaction Date: 27 May 2014

Tracking Number:

1ZA9520E0299422062

1 Address Information

Ship To:
CRIT EPO
Mr. Nabahe
26600 Mohave Road
PARKER AZ 853447737

Ship From:
Evoqua Water Technologies LLC
Michelle G.
2523 S. Mutahar Street
Parker AZ 85344
Telephone:928-669-5758

Return Address:
Evoqua Water Technologies LLC
Michelle G.
2523 S. Mutahar Street
PARKER AZ 85344
Telephone:928-669-5758

2 Package Information

Weight	Dimensions / Packaging	Declared Value	Reference Numbers
1. Letter (Letter billable)	UPS Letter		Reference#1 - Updated Contingency Plan Reference#2 -

3 UPS Shipping Service and Shipping Options

Service:	UPS 2nd Day Air		
Shipping Fees Subtotal:		17.24 USD	Additional Shipping Options
Transportation		13.35 USD	Quantum View Notify E-mail Notifications:
Fuel Surcharge		1.64 USD	1 james.r.provins@evoqua.com: Exception, Delivery
Delivery Area Surcharge- Extended Package 1		2.25 USD	No Charge

4 Payment Information

Bill Shipping Charges to: Shipper's Account A9520E

A discount has been applied to the Daily rates for this shipment

Total Charged:
Negotiated Total:

17.24 USD
6.49 USD

Note: Your invoice may vary from the displayed reference rates.

* For delivery and guarantee information, see the UPS Service Guide. To speak to a customer service representative, call 1-800-PICK-UPS for domestic services and 1-800-782-7892 for international services.

Responsibility for Loss or Damage

UPS's liability for loss or damage to each domestic package or international shipment is limited to \$100. Unless a greater value is recorded in the declared value field of the UPS shipping system used, the shipper agrees that the released value of each package covered by this receipt is no greater than \$100, which is a reasonable value under the circumstances surrounding the transportation. To increase UPS's limit of liability for loss or damage above \$100, the shipper must declare a higher value and pay an additional charge. See the UPS Tariff/Terms and Conditions of Service at www.ups.com for UPS's liability limits, maximum declared values, and other terms of service. UPS does not accept for transportation and shippers are prohibited from shipping packages with a value of more than \$50,000. Claims not made within nine months after delivery of the package (sixty days for international shipments), or in the case of failure to make delivery, nine months after a reasonable time for delivery has elapsed (sixty days for international shipments), shall be deemed waived. The entry of a C.O.D. amount is not a declaration of value for carriage purposes. All checks or other negotiable instruments tendered in payment of C.O.D. will be accepted by UPS at shipper's risk. UPS shall not be liable for any special, incidental, or consequential damages. All shipments are subject to the terms and conditions contained in the UPS Tariff/Terms and Conditions of Service (available at www.ups.com).



Shipment Receipt

Transaction Date: 21 May 2014

Tracking Number:

1ZA9520E0293634497

1 Address Information

Ship To:
CRIT EPO
Mr. Wilfred Nabahe
26600 Mohave Road
PARKER AZ 853447737

Ship From:
Evoqua Water Technologies LLC
Michelle G.
2523 S. Mutahar Street
Parker AZ 85344
Telephone:928-669-5758

Return Address:
Evoqua Water Technologies LLC
Michelle G.
2523 S. Mutahar Street
Parker AZ 85344
Telephone:928-669-5758

2 Package Information

Weight	Dimensions / Packaging	Declared Value	Reference Numbers
1. Letter (Letter billable)	UPS Letter		Reference#1 - 2013 TRI REPORT Reference#2 -

3 UPS Shipping Service and Shipping Options

Service:	UPS 2nd Day Air		
Shipping Fees Subtotal:		17.24 USD	Additional Shipping Options
Transportation		13.35 USD	Quantum View Notify E-mail Notifications:
Fuel Surcharge		1.64 USD	1 james.r.provins@evoqua.com: Exception, Delivery
Delivery Area Surcharge- Extended Package 1		2.25 USD	No Charge

4 Payment Information

Bill Shipping Charges to: Shipper's Account A9520E

A discount has been applied to the Daily rates for this shipment

Total Charged:	17.24 USD
Negotiated Total:	6.49 USD

Note: Your Invoice may vary from the displayed reference rates.

* For delivery and guarantee information, see the UPS Service Guide. To speak to a customer service representative, call 1-800-PICK-UPS for domestic services and 1-800-782-7892 for international services.

Responsibility for Loss or Damage

UPS's liability for loss or damage to each domestic package or international shipment is limited to \$100. Unless a greater value is recorded in the declared value field of the UPS shipping system used, the shipper agrees that the released value of each package covered by this receipt is no greater than \$100, which is a reasonable value under the circumstances surrounding the transportation. To increase UPS's limit of liability for loss or damage above \$100, the shipper must declare a higher value and pay an additional charge. See the UPS Tariff/Terms and Conditions of Service at www.ups.com for UPS's liability limits, maximum declared values, and other terms of service. UPS does not accept for transportation and shippers are prohibited from shipping packages with a value of more than \$50,000. Claims not made within nine months after delivery of the package (sixty days for international shipments), or in the case of failure to make delivery, nine months after a reasonable time for delivery has elapsed (sixty days for international shipments), shall be deemed waived. The entry of a C.O.D. amount is not a declaration of value for carriage purposes. All checks or other negotiable instruments tendered in payment of C.O.D. will be accepted by UPS at shipper's risk. UPS shall not be liable for any special, incidental, or consequential damages. All shipments are subject to the terms and conditions contained in the UPS Tariff/Terms and Conditions of Service (available at www.ups.com).

APPENDIX B

EMERGENCY RESPONSE PROCEDURES

EMERGENCY RESPONSE PROCEDURES

Fire or Explosion

1. Upon discovering a fire or explosion, sound the alarm and contact the Plant Operator. Follow the directions of the Plant Operator, Emergency Coordinator and off-site Incident Commander, if applicable.
2. Clear the area of all nonessential personnel. Follow evacuation procedures if instructed to do so.
3. Trained employees only (see note below) undertake the following actions if possible without significant risk to yourself or others.
 - a. Shut off the fuel source to the fire, if possible.
 - b. Attempt to control the fire with dry chemical fire extinguishers (Class A, B and C fires) and/or water (Class A fires).
 - c. Shut off any operating equipment, treatment processes, etc. within the vicinity of the fire.
 - d. Shut off electrical power in the area affected by the fire.
 - e. Isolate or remove all other possible sources of ignition from the vicinity of the fire.

Releases of Toxic Fumes

1. If toxic fumes or vapors are believed to be present, notify the Plant Operator who will then report the incident to the Emergency Coordinator. If human health or the environment outside the facility boundaries could be threatened, the Emergency Coordinator will notify the **Colorado River Indian Tribes Fire Department** and the **National Response Center**.
2. Clear the area of all nonessential personnel. Follow evacuation procedures if instructed to do so.
3. Trained employees only (see note below) undertake the following actions if possible without significant risk to yourself or others and only if you have donned the proper protective clothing and breathing apparatus and followed all confined space entry procedures.
 - a. Discontinue the waste transfer operation by closing appropriate valves and de-energizing transfer equipment.
 - b. Secure the lids on any open waste containers.
 - c. Remove all sources of ignition from the area.

NOTE: Employees who receive 40 hours of initial training in hazardous waste management prior to commencement of duties at Evoqua Water Technologies will be considered trained to a sufficient level of awareness per 29 CFR 1910.120(p)(8)(iii). They should have sufficient knowledge to actively respond to hazardous materials and hazardous waste emergencies at the facility.

EMERGENCY RESPONSE PROCEDURES

Release of Solids

Inside Containment Area

1. Upon discovering a release of solid material within the containment area, notify the Plant Operator.
2. Locate the source and stop the release.
3. Remove nonessential personnel from the vicinity.
4. Trained employees only (see note below) undertake the following actions if possible without significant risk to yourself or others.
 - a. Clean up the released material and place in a container. Take the filled container to the spent carbon storage area and label properly.
 - b. After solids are removed, hose down the area of the spill, directing water to the nearest sump.
 - c. Clean any tools used during clean-up and hose the cleaning solution to the sump.

Outside Containment Area

1. Upon discovering a release of solid material outside the containment area, notify the Plant Operator.
2. Locate the source and stop the release.
3. Remove nonessential personnel from the vicinity.
4. Trained employees only (see note below) undertake the following actions if possible without significant risk to yourself or others.
 - a. Clean up the released material, and any other material in the release area that may have come into contact with the released material, and place in a container. Take the filled container to the spent carbon storage area and label properly.
 - b. Clean any tools used during clean-up inside the containment area and hose the cleaning solution to the sump.

NOTE: Employees who receive 40 hours of initial training in hazardous waste management prior to commencement of duties at Evoqua Water Technologies will be considered trained to a sufficient level of awareness per 29 CFR 1910.120(p)(8)(iii). They should have sufficient knowledge to actively respond to hazardous materials and hazardous waste emergencies at the facility.

EMERGENCY RESPONSE PROCEDURES, continued

Release of Liquids

Inside Containment Area

1. Upon discovering a release of liquid material within the containment area, notify the Plant Operator.
2. Locate the source and stop the release.
3. Remove nonessential personnel from the vicinity.
4. Trained employees only (see note below) undertake the following actions if possible without significant risk to yourself or others.
 - a. Allow free liquids to flow to the nearest sump. After as much free liquid as possible has drained, place any remaining solid material in a container. Take the filled container to the spent carbon storage area and label properly.
 - b. After solids are removed, hose down the area of the spill, directing water to the nearest sump.
 - c. Clean any tools used during clean-up and hose the cleaning solution to the sump.

NOTE: Employees who receive 40 hours of initial training in hazardous waste management prior to commencement of duties at Evoqua Water Technologies will be considered trained to a sufficient level of awareness per 29 CFR 1910.120(p)(8)(iii). They should have sufficient knowledge to actively respond to hazardous materials and hazardous waste emergencies at the facility.

EMERGENCY RESPONSE PROCEDURES, continued

Release of Liquids, continued

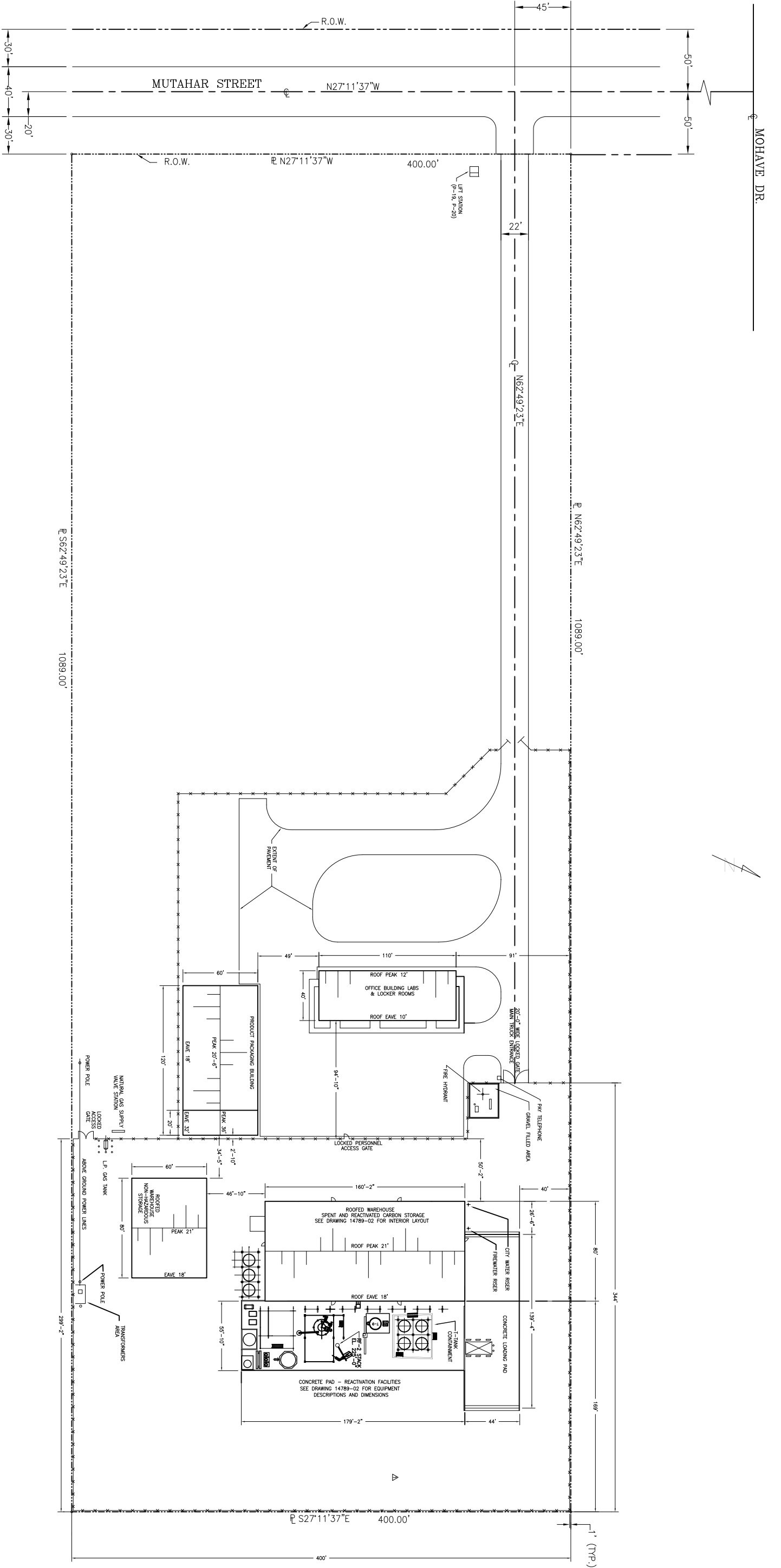
Outside Containment Area

1. Upon discovering a release of liquid material outside the containment area, locate the source and stop the release if possible without risk to yourself or others.
2. Notify the Plant Operator who will in turn notify the Emergency Coordinator. If human health or the environment outside the facility boundaries could be threatened, the Emergency Coordinator will immediately notify the **Colorado River Indian Tribes Fire Department** and the **National Response Center**.
3. Remove nonessential personnel from the vicinity. Follow evacuation procedures if instructed to do so.
4. Trained employees only (see note below) undertake the following actions if possible without significant risk to yourself or others.
 - a. Initiate shutdown of part or all of the facility.
 - b. Contain liquid in as small an area as possible. Use adsorbent, earth and/or containment boom materials to collect any free liquid. Place adsorbent materials in a container.
 - c. Collect and place in a container any materials in the release area that may have come in contact with the released material. Take the filled containers to the spent carbon storage area and label properly.
 - d. Clean any tools used during clean-up inside the containment area and hose the cleaning solution to the sump.

NOTE: Employees who receive 40 hours of initial training in hazardous waste management prior to commencement of duties at Evoqua Water Technologies will be considered trained to a sufficient level of awareness per 29 CFR 1910.120(p)(8)(iii). They should have sufficient knowledge to actively respond to hazardous materials and hazardous waste emergencies at the facility.

APPENDIX C

SITE PLAN



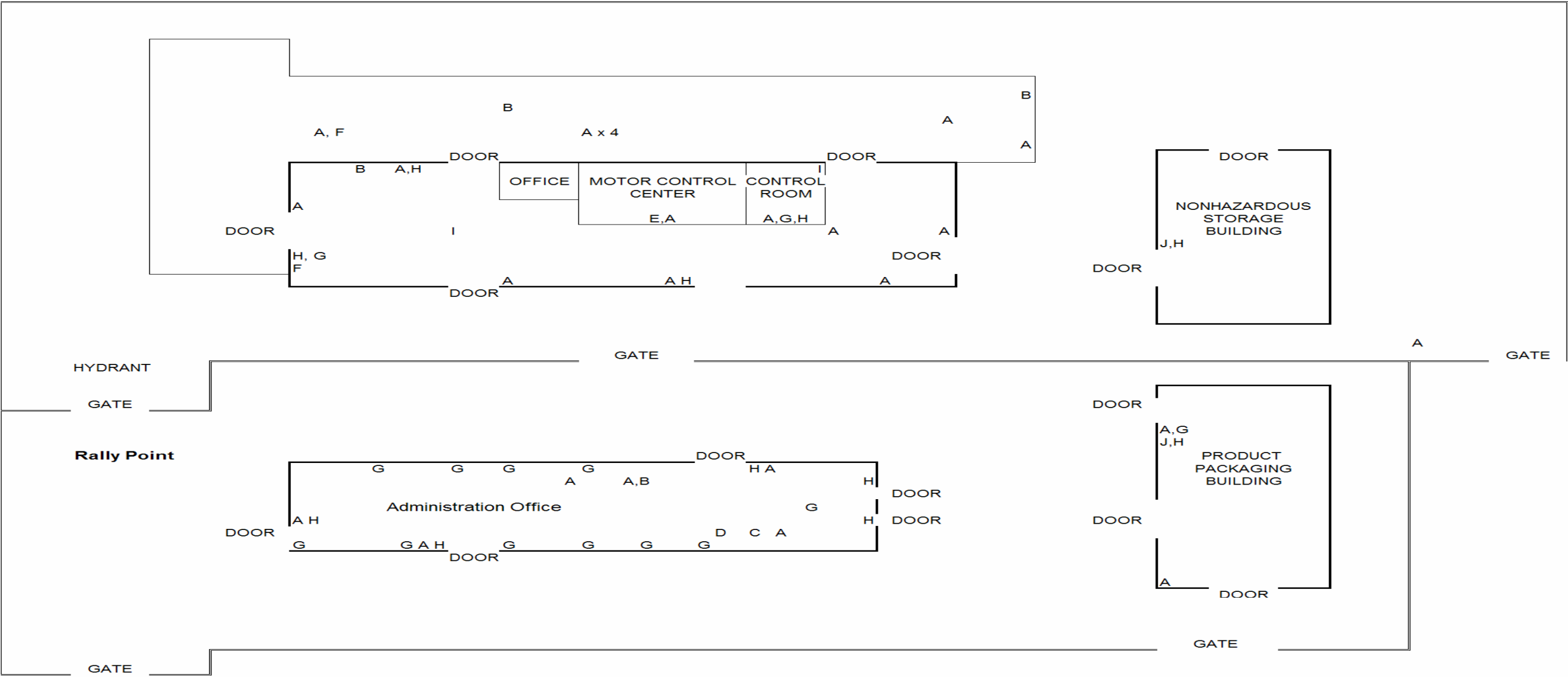
- NOTES:**
- THIS DRAWING INCLUDES COMPONENTS OF THE FACILITY THAT ARE EXEMPT FROM PERMITTING UNDER VARIOUS PROVISIONS OF RCRA. DATA RELATED TO THESE COMPONENTS IS PROVIDED FOR INFORMATIONAL PURPOSES AND EASE OF REVIEW ONLY, AND THEY ARE NOT INTENDED TO BECOME REGULATED COMPONENTS OF THE HAZARDOUS WASTE FACILITY.

3	3/16/12	NAME CHANGED TO SIEMENS INDUSTRY, INC.	JBE	KEM
2	1/18/07	UPDATED FOR PERMIT SUBMITTAL	JBE	KEM
Δ	6/21/02	REMOVED DUMPSITE PAD	CPG	KEM
REV.	DATE	REVISION DESCRIPTION	DRAWN	CHK'D ENGR
CUSTOMER:		SIEMENS INDUSTRY, INC.		
LOCATION:		SIEMENS INDUSTRY, INC., Parker, AZ		
PROJECT No.		2523 MUTAHAR ST. PARKER, AZ 85344	TITLE:	
DRAWN: CPG		3/01/02	REACTIVATION FACILITY SITE PLAN	
CHK'D: KEM		3/01/02		
ENGR:			PART No.	
			DWG No. D14789-08	
			REV. 3	

APPENDIX D

LOCATION OF EMERGENCY EQUIPMENT

Location of Emergency Equipment (Ground Floor)



	FENCE	A. FIRE EXTINGUISHERS	D. PROTECTIVE CLOTHING	G. PHONES WITH PAGING	J. FIRE HOSE
	OUTSIDE PROCESS AREA	B. EMERGENCY SHOWER/EYE WASH	E. FIRST AID KITS	H. FIRE ALARM	
	STORAGE CONTROL & MAINTENANCE	C. RESPIRATORS	F. SPILL CONTROL KITS	I. SPRINKLER SYSTEM	

APPENDIX E

EVACUATION ROUTES

Parker Facility Evacuation Routes and Rally Points

